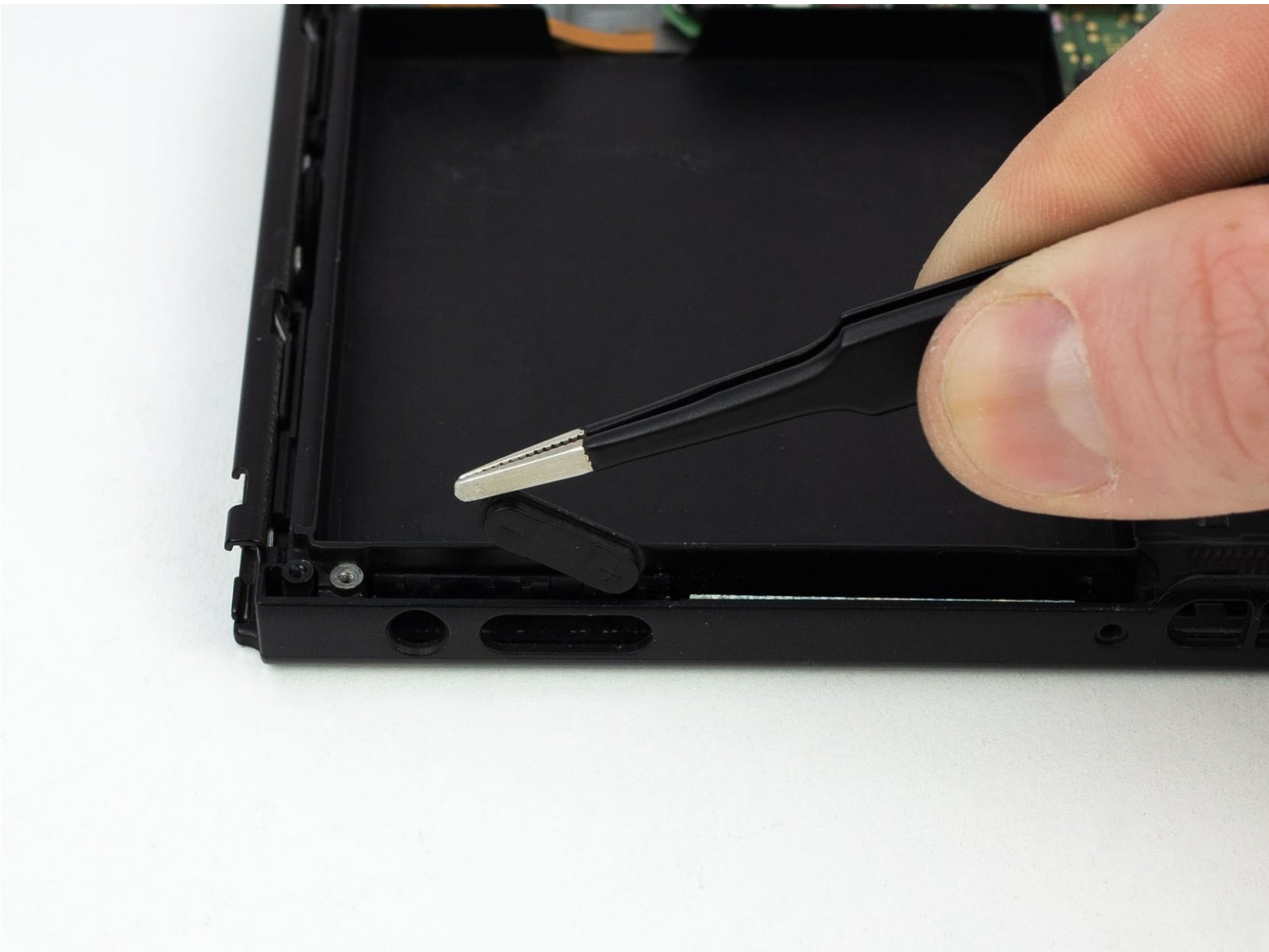




Nintendo Switch Exterior Power and Volume Button Replacement

A free guide on how to replace the outside power and volume buttons and internal button board on a Nintendo Switch gaming console.

Written By: Blake Klein



INTRODUCTION

Follow this guide to replace the rubber conductive button pad and or exterior power and volume buttons.

When reinstalling, attach the exterior plastic buttons to the rubber conductive pad and insert them together into the device.



TOOLS:

- [Tri-point Y00 Screwdriver](#) (1)
 - [JIS #000 Screwdriver](#) (1)
 - [Spudger](#) (1)
 - [ESD Safe Tweezers Blunt Nose](#) (1)
-

Step 1 — Rear Panel



- Remove the four 6.3 mm Tri-point Y00 screws from the rear panel.

Step 2



- Remove the single 6.1 mm Phillips #000 screw from underneath the kickstand.

Step 3



- Remove the two 2.7 mm Phillips #000 screws from the bottom of the device.

Step 4



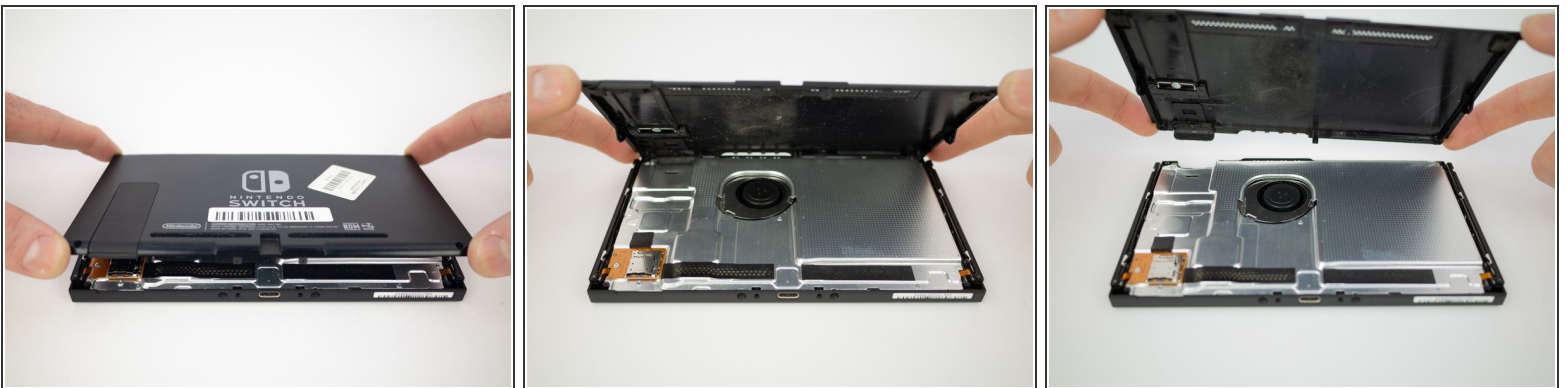
- Remove the single 2.7 mm Phillips #000 screw from the top of the device.

Step 5



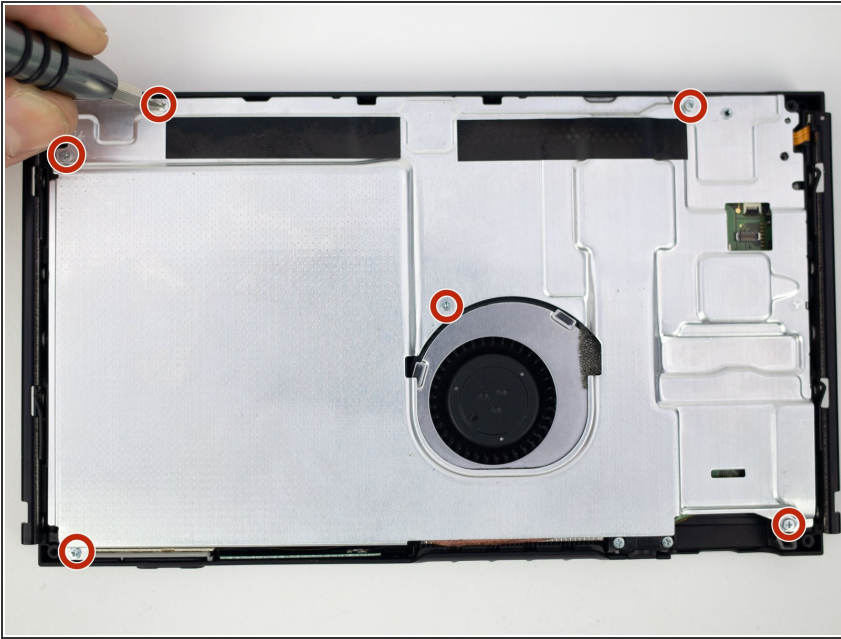
- Remove the single 3.8 mm Phillips #000 screw from the right Joy-Con rail.
- Remove the single 3.8 mm Phillips #000 screw from the left Joy-Con rail.

Step 6



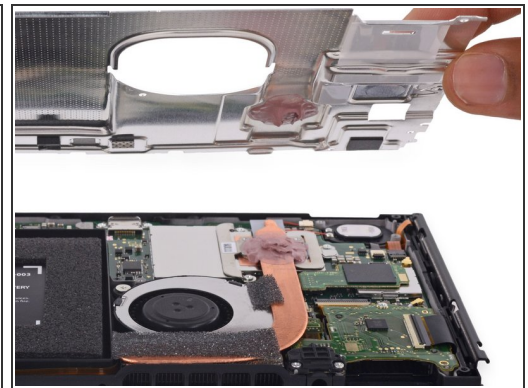
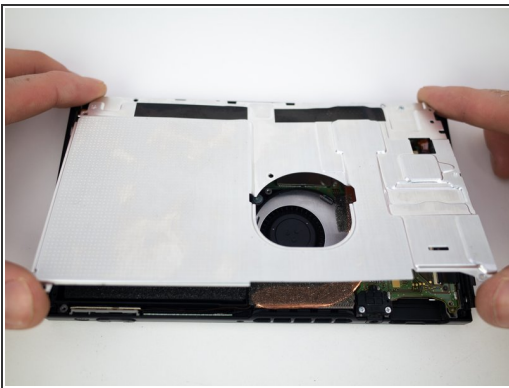
- Pull the rear panel up and off of the device.

Step 7 — Shield Plate



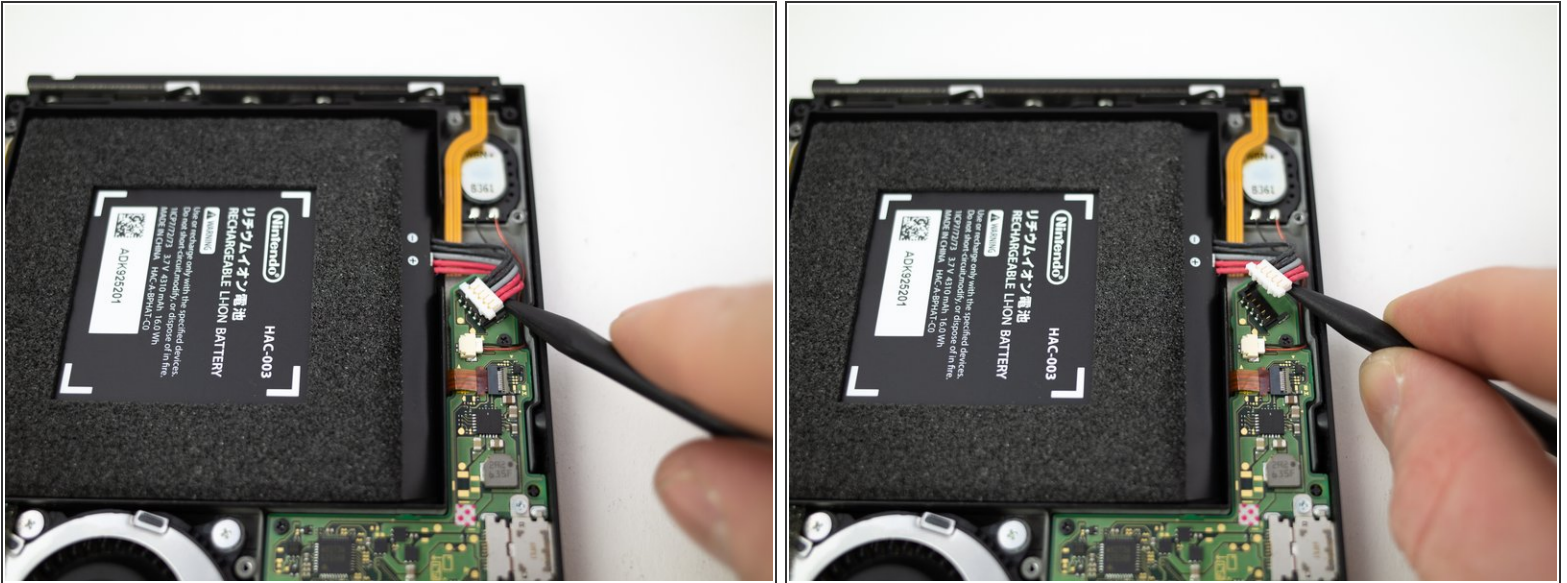
- Remove the six 3.1mm Phillips #000 screws from the shield plate.

Step 8



- Remove the shield plate from the device.
- ✦ A thick pink thermal compound bridges the gap between the shield plate and the copper heat sink underneath. For best results, whenever the shield plate is removed, refer to our [thermal paste guide](#) to remove the old thermal compound and replace it with an appropriate, thick compound such as [K5 Pro](#) during reassembly.

Step 9 — Battery Disconnect



- Insert the pointed end of a spudger underneath the white connector and pry upwards to disconnect the battery from the motherboard.

Step 10 — Heat Sink



- Remove the three 3.1mm Phillips #000 screws from the heatsink.

Step 11



- Pull the heatsink up 45 degrees and rotate it to the right to remove.

☑ Before reassembly, follow the [thermal paste guide](#).

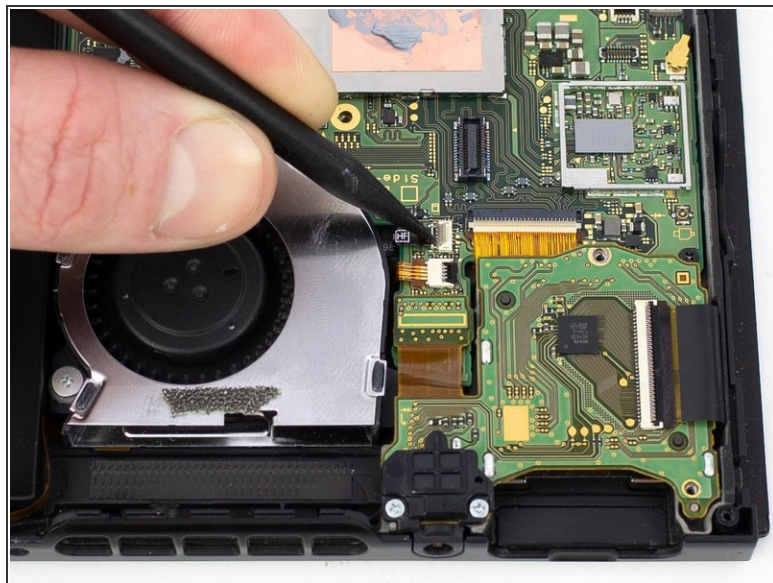
- Clean all the thermal paste off the underside of the heat sink using isopropyl alcohol (>90%) or Artic Silver ArctiClean.
- Clean and **replace** the thermal paste on the processor cover.

Step 12 — Fan



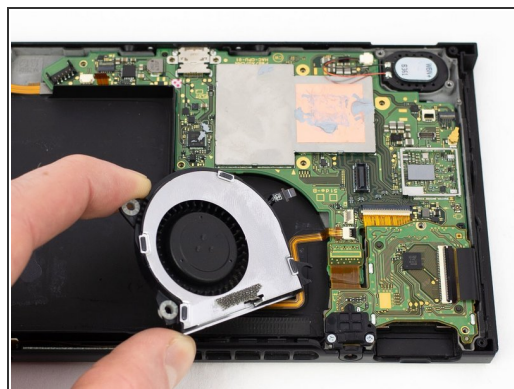
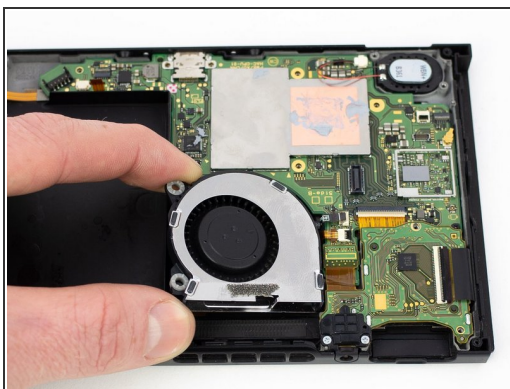
- Remove the two 4.8mm JIS #000 screws from the fan.

Step 13



- Use a spudger to flip up the small gray locking flap on the fan [ZIF](#) connector.

Step 14



- Lift the left side of the fan out of its recess and rotate it 15 degrees towards you.
- Pull the fan out and away from you to unhook it from the rubber grommet.

Step 15 — Power and Volume Button Board



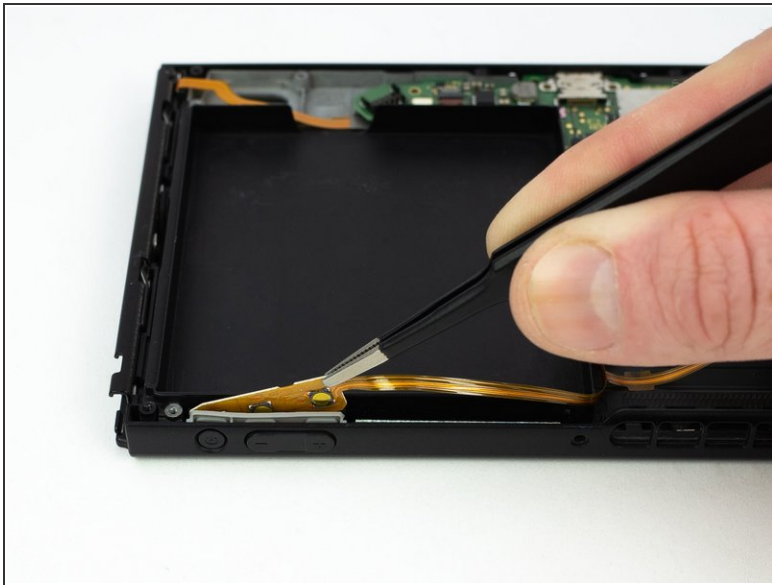
- Use a spudger to flip up the small black locking flap on the power/volume ribbon cable [ZIF](#) connector.

Step 16



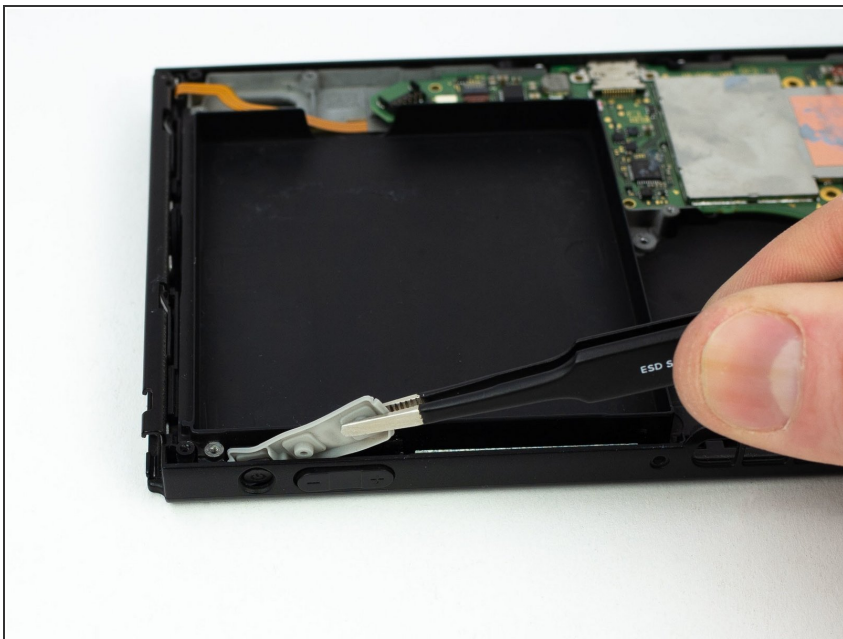
- Use the flat end of a spudger to pry up the tapped down power/volume ribbon cable.

Step 17



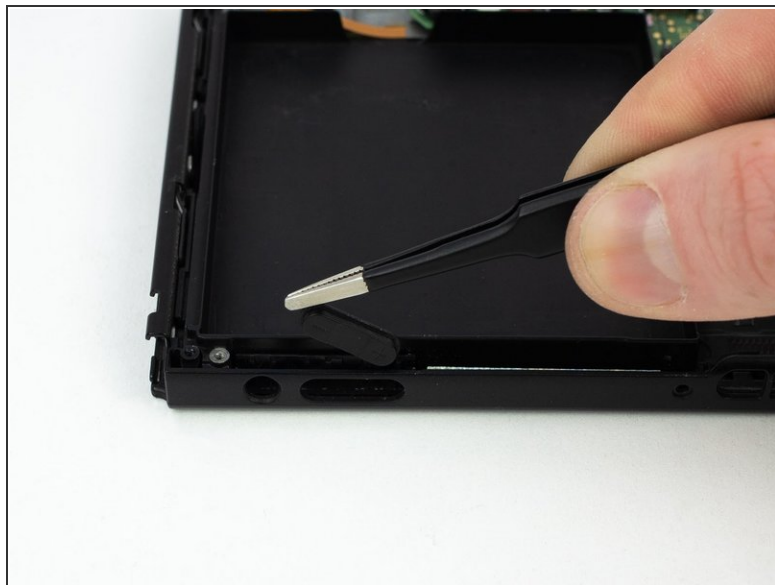
- Remove the power/volume board with a pair of blunt nose tweezers.

Step 18 — Exterior Power and Volume Buttons



- Pull the rubber conductive pad out with a pair of blunt nose tweezers.

Step 19



- Pull the power and volume buttons out with a pair of blunt nose tweezers.

To reassemble your device, follow these instructions in reverse order.