



Nintendo Switch Heat Sink Replacement

A free guide showing how to replace the heat sink on a Nintendo Switch gaming console.

Written By: Blake Klein



INTRODUCTION

Follow this guide to replace the heat sink on a Nintendo Switch gaming console.

[Installation will require the thermal paste to be cleaned off and replaced with new.](#)



TOOLS:

- ESD Safe Tweezers Blunt Nose (1)
- JIS #0 Screwdriver (1)
- JIS #000 Screwdriver (1)
- Tri-point Y00 Screwdriver (1)
- Spudger (1)
- Arctic Silver Thermal Paste (1)
- Isopropyl Alcohol (1)
- Coffee Filters or a lint-free cloth (1)
- K5-PRO Viscous Thermal Paste (1)



PARTS:

- Nintendo Switch Heat Sink (1)

Step 1 — Rear Panel



- Remove the four 6.3 mm Tri-point Y00 screws from the rear panel.

Step 2



- Remove the single 6.1 mm Phillips #000 screw from underneath the kickstand.

Step 3



- Remove the two 2.7 mm Phillips #000 screws from the bottom of the device.

Step 4



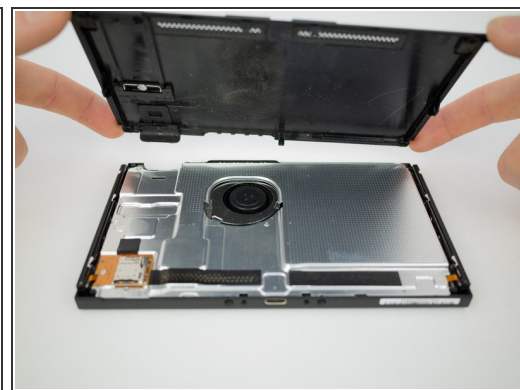
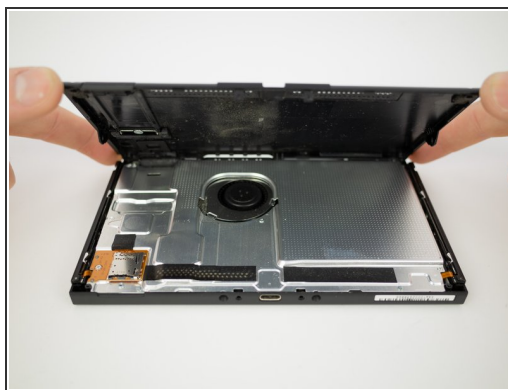
- Remove the single 2.7 mm Phillips #000 screw from the top of the device.

Step 5



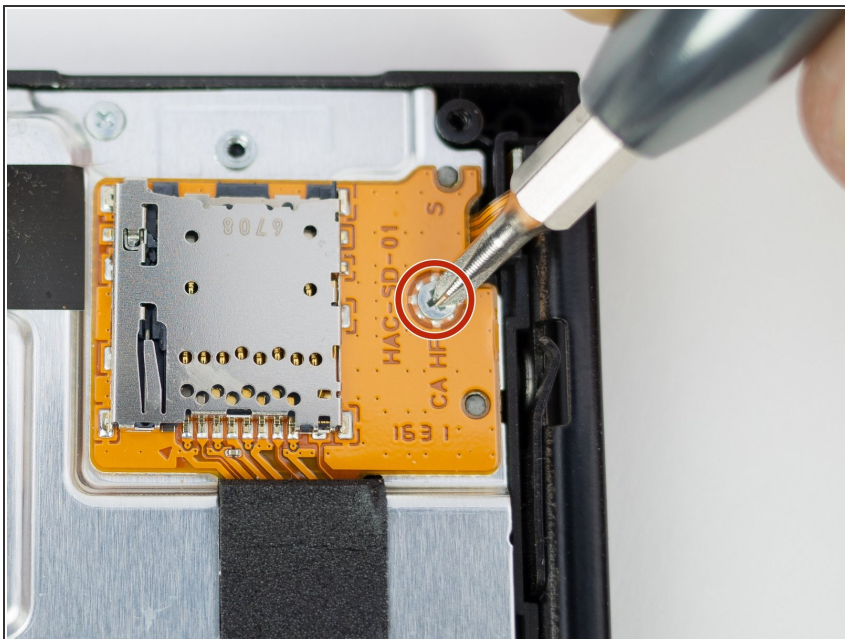
- Remove the single 3.8 mm Phillips #000 screw from the right Joy-Con rail.
- Remove the single 3.8 mm Phillips #000 screw from the left Joy-Con rail.

Step 6



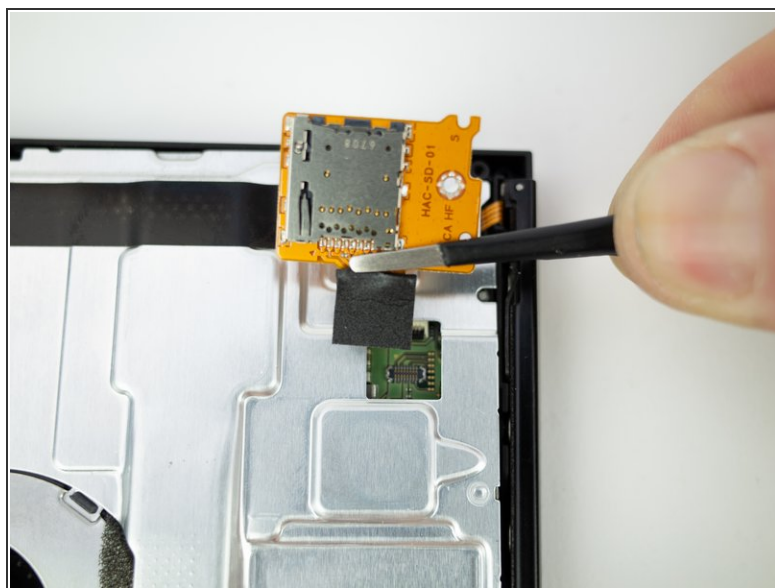
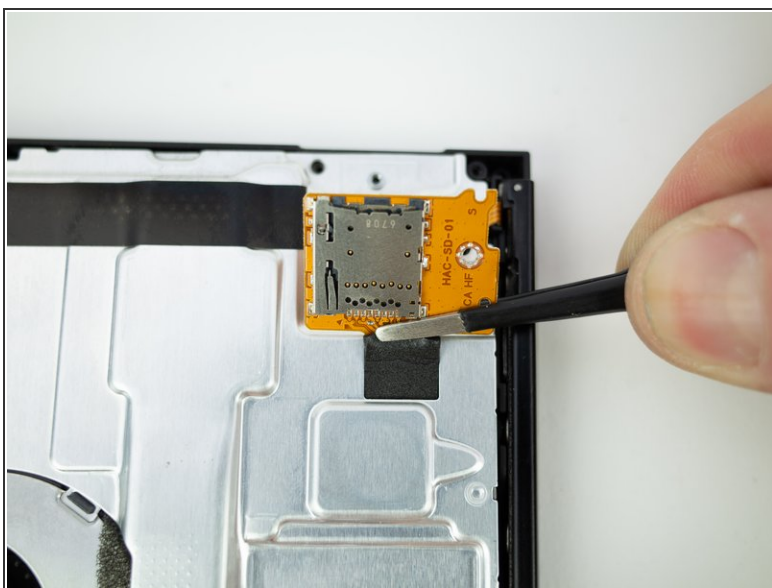
- Pull the rear panel up and off of the device.

Step 7 — Micro SD Card Reader



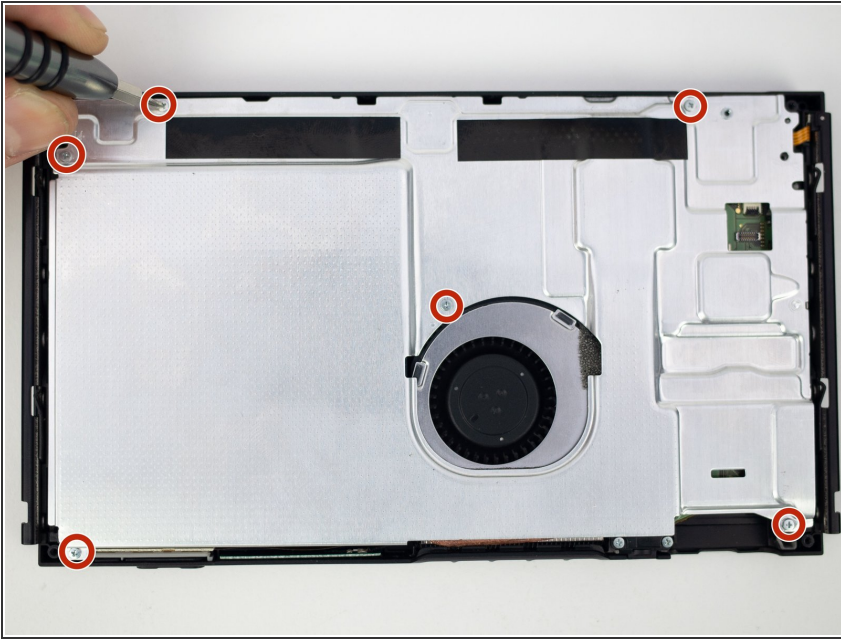
- Remove the single 3.1 mm Phillips screw from micro SD card board.

Step 8



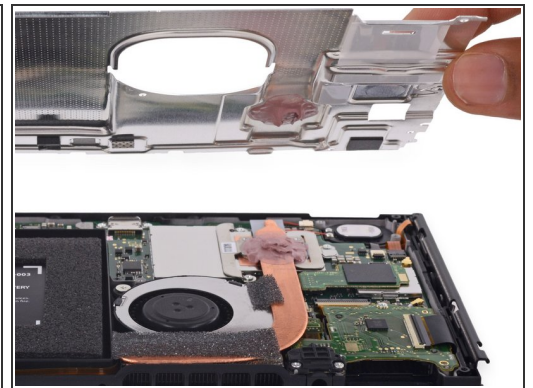
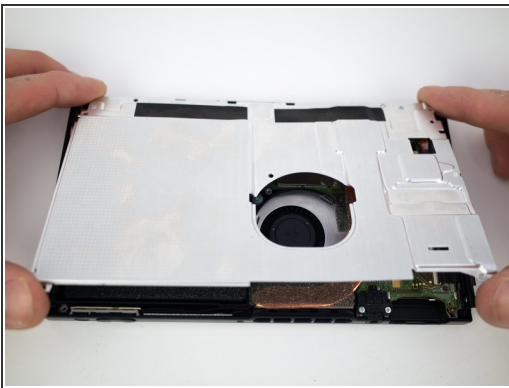
- Gently lift the micro SD card board straight up, away from the Switch to disconnect and remove it.
- ☑ During reassembly, line up the micro SD card board and lightly press on the foam pad until the press connector snaps into place to reconnect it.

Step 9 — Shield Plate



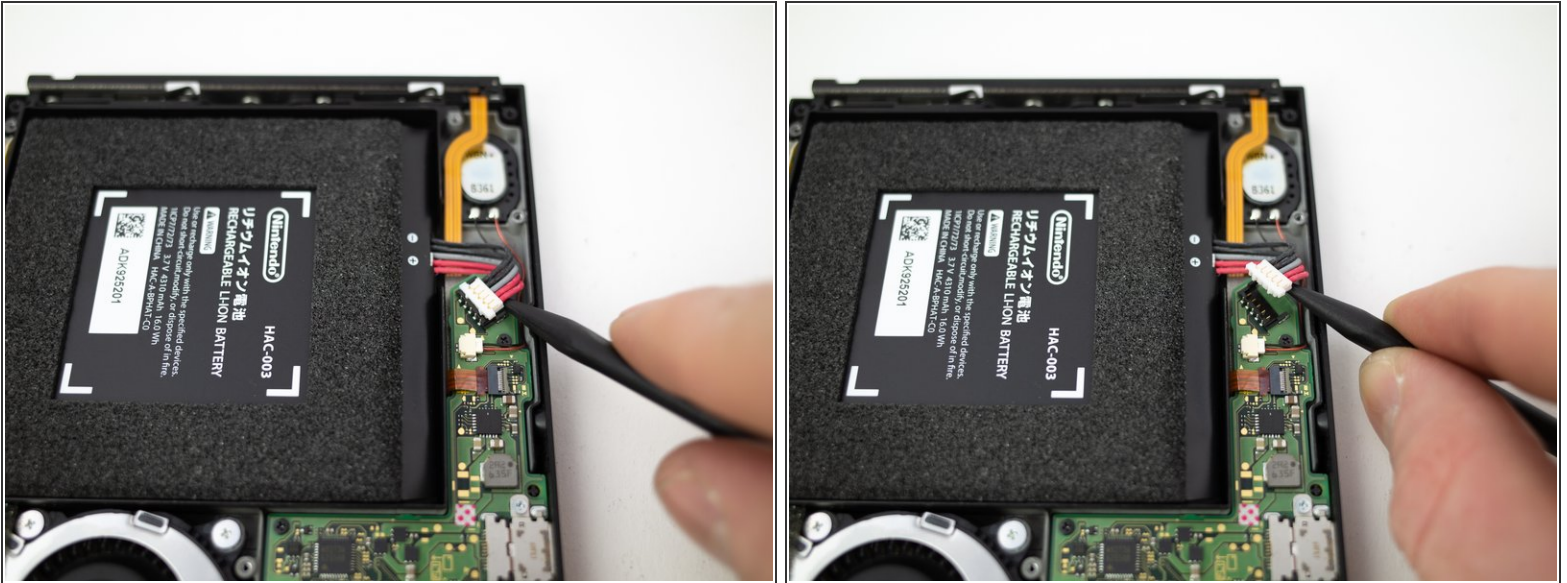
- Remove the six 3.1mm Phillips #000 screws from the shield plate.

Step 10



- Remove the shield plate from the device.
- ★ A thick pink thermal compound bridges the gap between the shield plate and the copper heat sink underneath. For best results, whenever the shield plate is removed, refer to our [thermal paste guide](#) to remove the old thermal compound and replace it with an appropriate, thick compound such as [K5 Pro](#) during reassembly.

Step 11 — Battery Disconnect



- Insert the pointed end of a spudger underneath the white connector and pry upwards to disconnect the battery from the motherboard.

Step 12 — Heat Sink



- Remove the three 3.1mm Phillips #000 screws from the heatsink.

Step 13



- Pull the heatsink up 45 degrees and rotate it to the right to remove.

✦ Before reassembly, follow the [thermal paste guide](#).

- Clean all the thermal paste off the underside of the heat sink using isopropyl alcohol (>90%) or Artic Silver ArctiClean.
- Clean and **replace** the thermal paste on the processor cover.

To reassemble your device, follow these instructions in reverse order.