



Nintendo Switch Joy-con Control Stick Replacement

Replace a broken/malfunctioning Joy-con joystick

Written By: The 12 year-old repair guy



INTRODUCTION

This guide will teach you step-by-step instructions to

replace the joystick of a Joy-con. In this guide, the Joy-con(R) will be shown but the process is almost the same as the left one. **Make sure that you have turned off your console to ensure there are no accidental connections**



TOOLS:

- [Tri-point Y00 Screwdriver](#) (1)
- [Spudger](#) (1)
- [ESD Safe Tweezers Blunt Nose](#) (1)
- [Phillips PH000 Screwdriver](#) (1)




PARTS:

- [Nintendo Switch Joy-Con Joystick](#) (1)

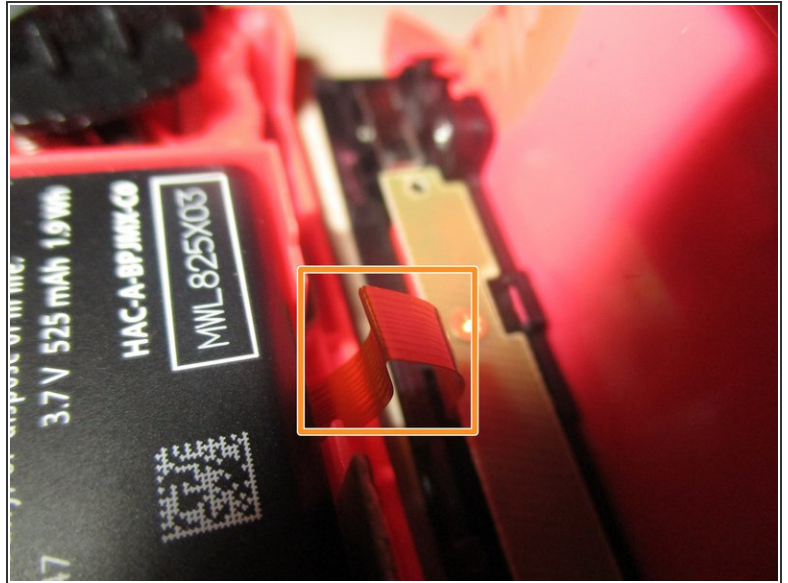
Step 1 — Unscrewing the Joy-con



 Remember to turn off your console before you start repairing to avoid accidental connections with it.

- First, start by removing these 4 Y00 screws on the back of the joy con.

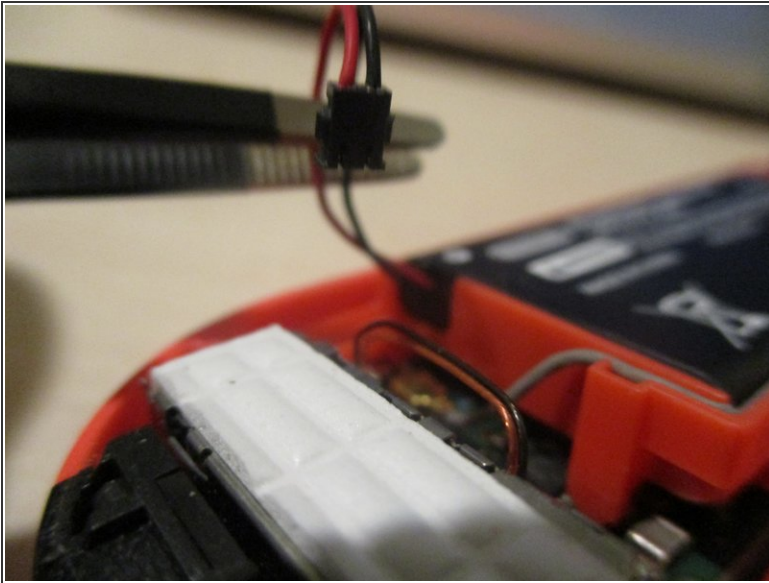
Step 2 — Opening the cover



- Insert the flat side of a spudger on the curved side to pry the back cover open

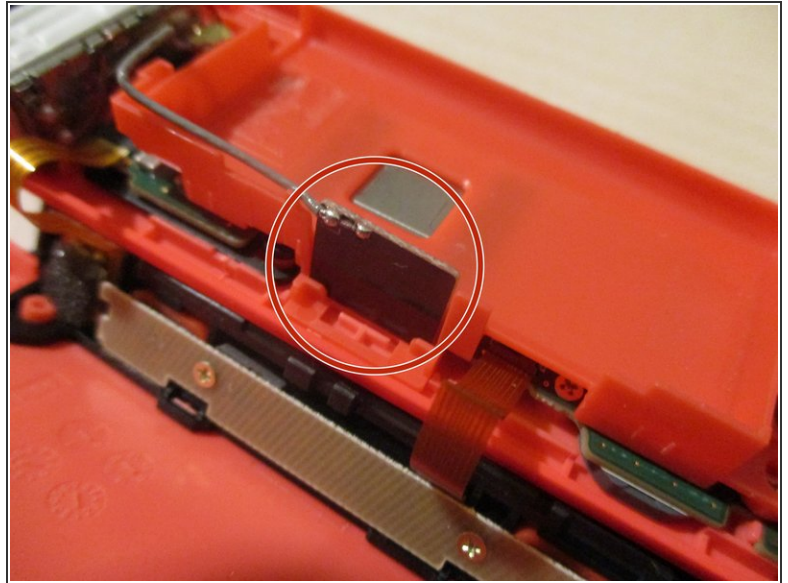
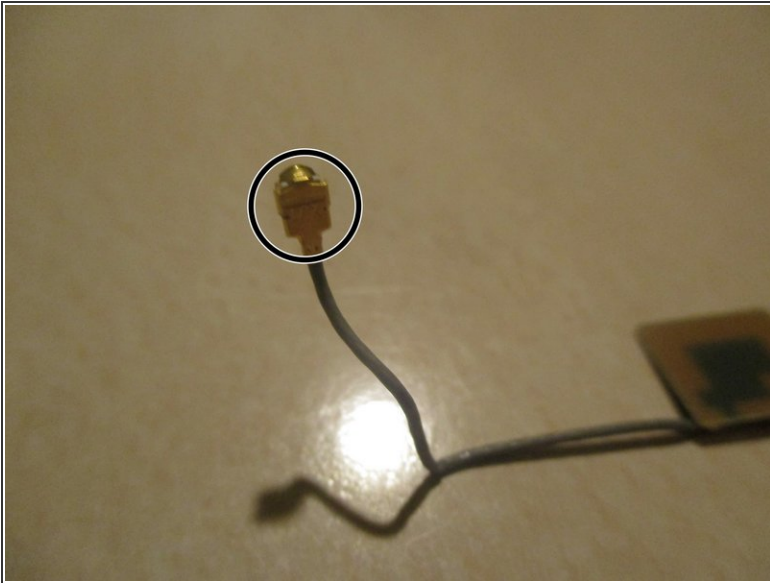
⚠ Be very careful though, because there are two ribbon cables for the charging port and the SL/SR buttons!

Step 3 — Disconnecting the battery



- ⓘ To avoid damaging components, remove the battery from the controller.
- ⓘ Please note that the connector is pulled out vertically and not sideways as a zif connector does.
 - Pull the battery connector with your tweezers from the bottom carefully.
 - Remove the battery by inserting the flat side of your spudger.
- ⓘ The battery is stuck to its frame with light adhesive.

Step 4 — Removing the Bluetooth antenna



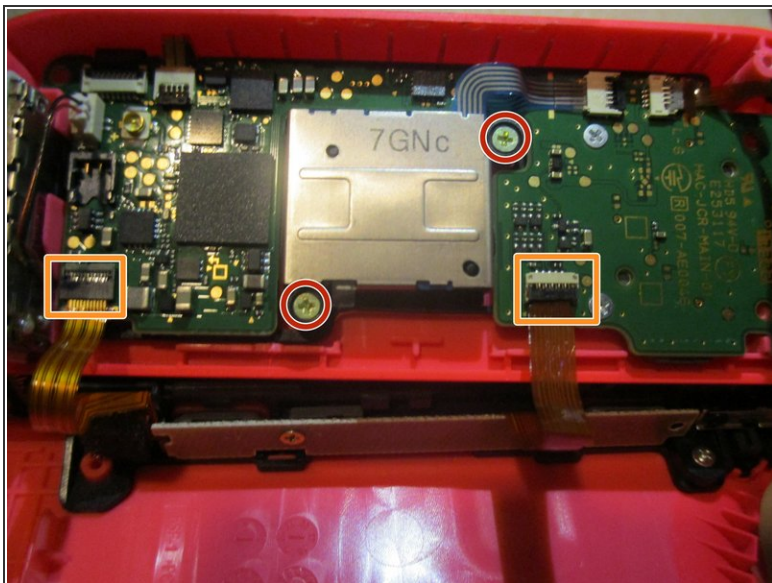
- Pull the golden SMP RF connector that connects the Bt antenna with the main board.
- remove the square antenna from the side of the battery compartment.

Step 5 — Removing the battery compartment.



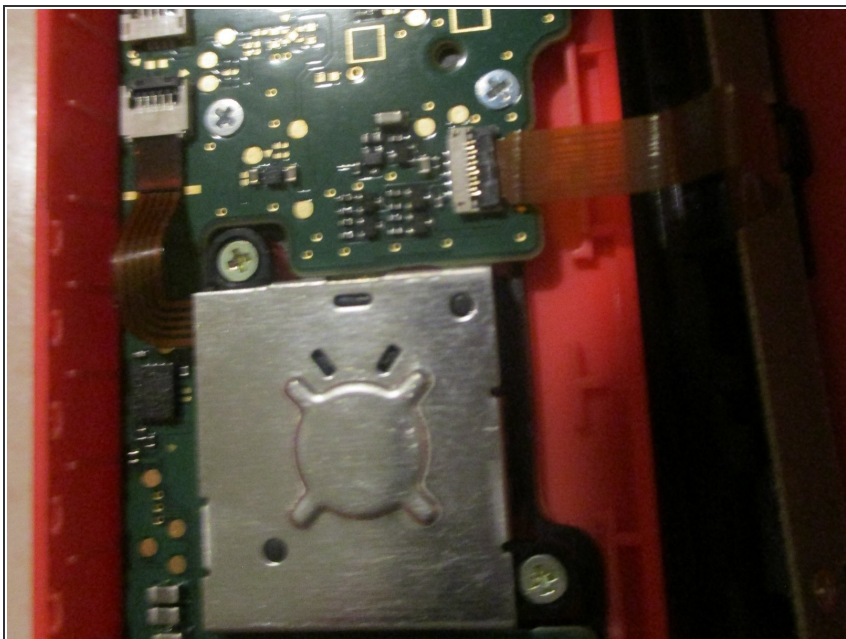
- remove the ZR button and its springs. Be careful not to break the clips holding it in place.
- unscrew the four PH000 screws holding the battery compartment and the ZR button board. There is one hidden on the side of the hd rumble module.
- ⓘ The screw of the ZR button board is shorter than the others. Keep that in mind if you are sorting the screws using a [magnetic project mat](#) or the cover of a [Mako driver kit](#)
- Pick up the battery compartment.

Step 6 — Removing the joystick



- Unscrew the two PH000 screws holding the joystick down.
- Make sure to NOT disconnect the two side board cables. It may cause fatal damage to the controller.
- Before you remove the joystick, remove the secured ribbon cable by opening the clip using the tip of a spudger.
- ⓘ Note that there is a small gasket below the joystick and that it has to be re-seated in place before inserting the new joystick.

Step 7 — Adding the new joystick



- to add the new joystick, push it in firmly and make sure it has fully gone through the gasket I mentioned above.
- Screw it in and put the ribbon cable in its socket. Don't forget to lock the cable in place.

To reassemble your Joy-con, follow these instructions in reverse order.