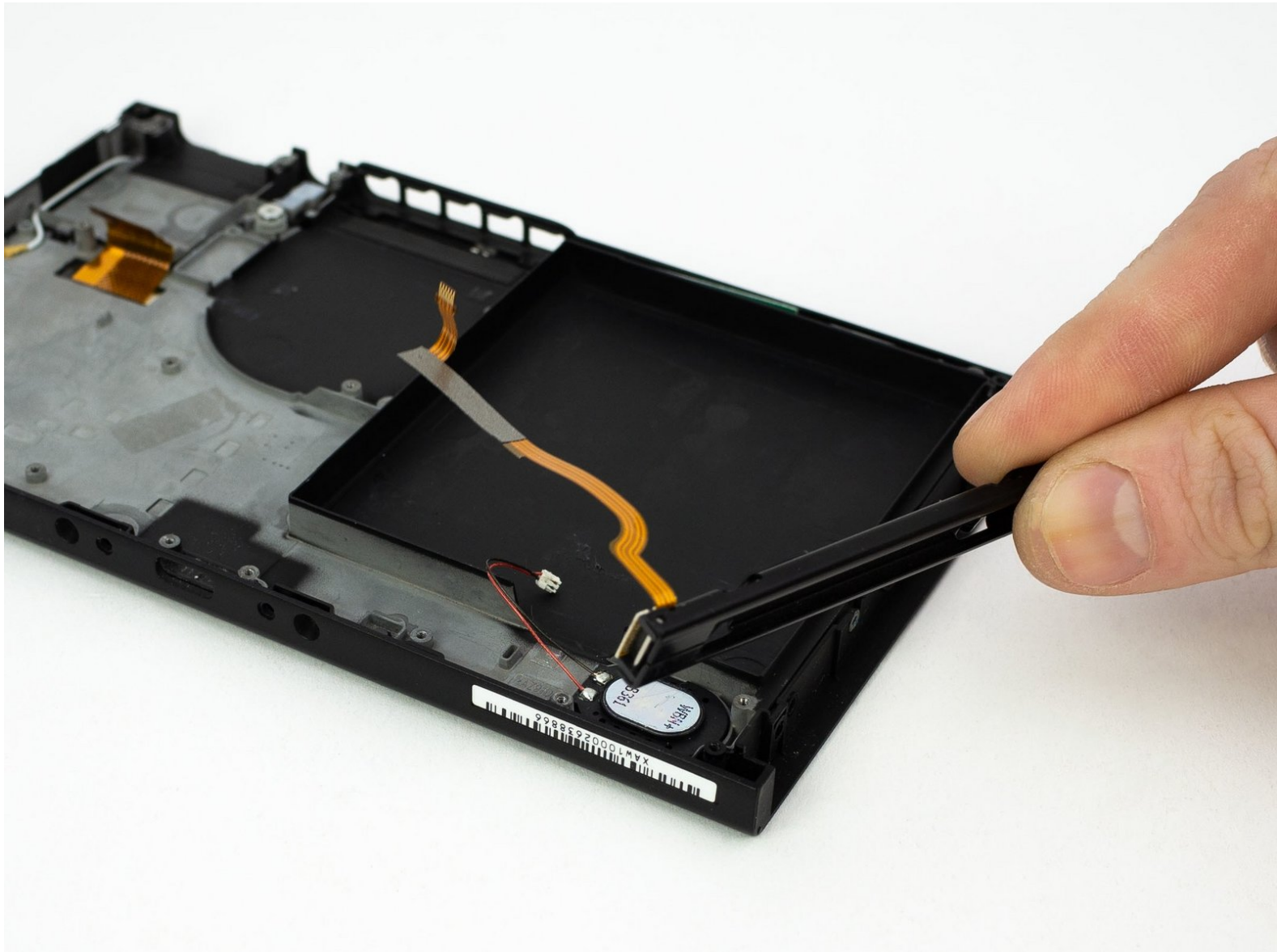




Nintendo Switch Left Joy-Con Rail Replacement

A free guide on how to replace the left Joy-Con rail on a Nintendo Switch gaming console.

Written By: Blake Klein



INTRODUCTION

Follow this replacement guide to replace the left Joy-Con rail on a Nintendo Switch gaming console.



TOOLS:

- [ESD Safe Tweezers Blunt Nose](#) (1)
- [Tri-point Y00 Screwdriver](#) (1)
- [JIS #000 Screwdriver](#) (1)
- [Spudger](#) (1)
- [JIS #0 Screwdriver](#) (1)



PARTS:

- [Nintendo Switch Left Joy-Con Sensor Rail](#) (1)

Step 1 — Rear Panel



- Remove the four 6.3 mm Tri-point Y00 screws from the rear panel.

Step 2



- Remove the single 6.1 mm Phillips #000 screw from underneath the kickstand.

Step 3



- Remove the two 2.7 mm Phillips #000 screws from the bottom of the device.

Step 4



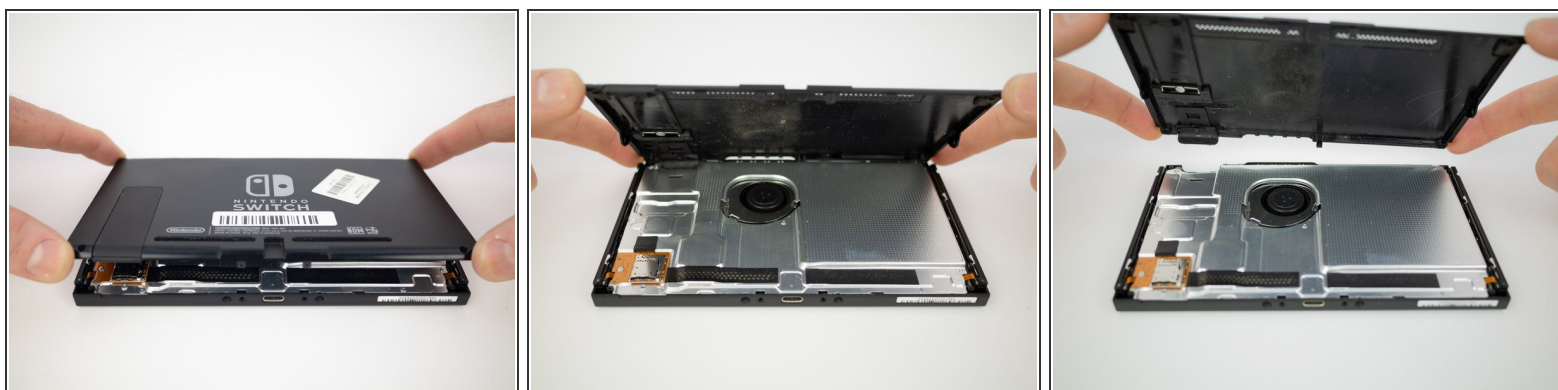
- Remove the single 2.7 mm Phillips #000 screw from the top of the device.

Step 5



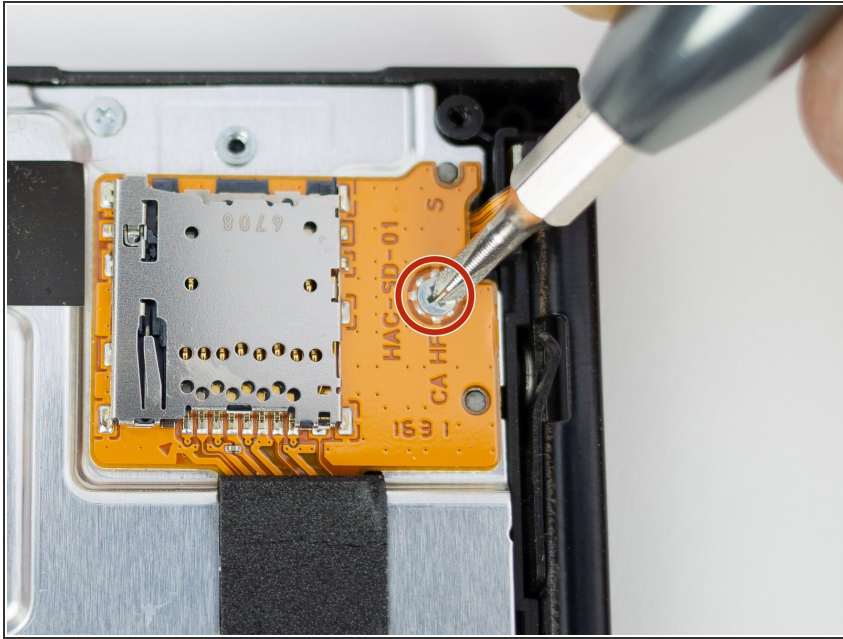
- Remove the single 3.8 mm Phillips #000 screw from the right Joy-Con rail.
- Remove the single 3.8 mm Phillips #000 screw from the left Joy-Con rail.

Step 6



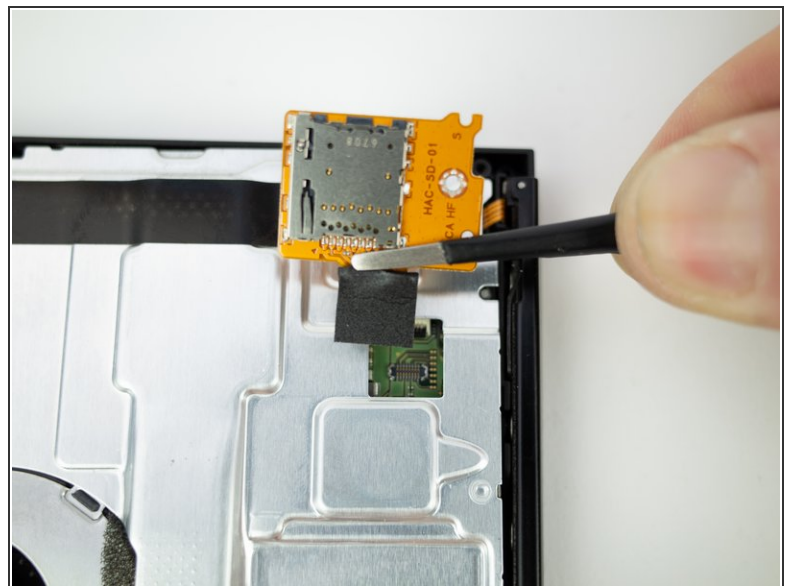
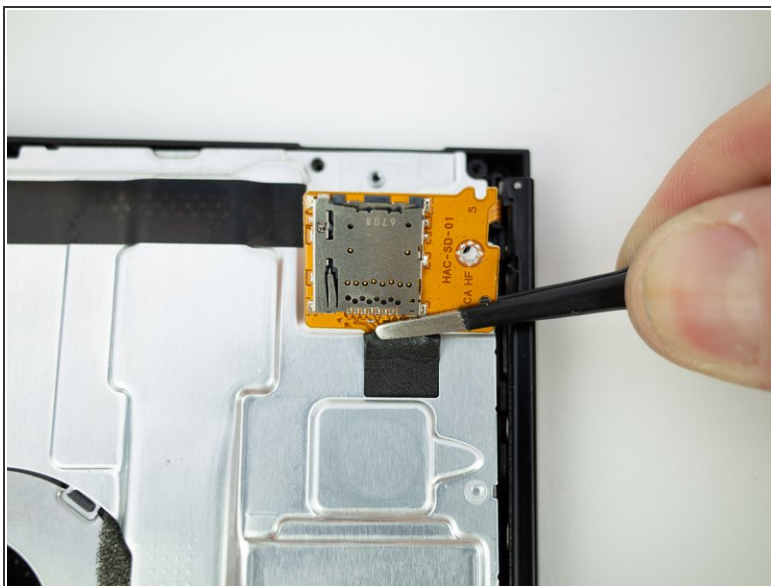
- Pull the rear panel up and off of the device.

Step 7 — Micro SD Card Reader



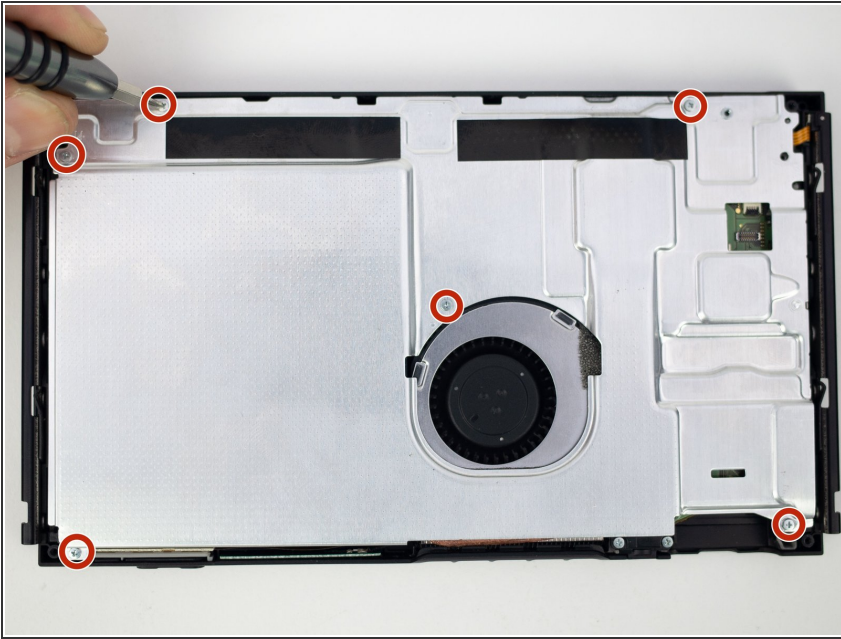
- Remove the single 3.1 mm Phillips screw from micro SD card board.

Step 8



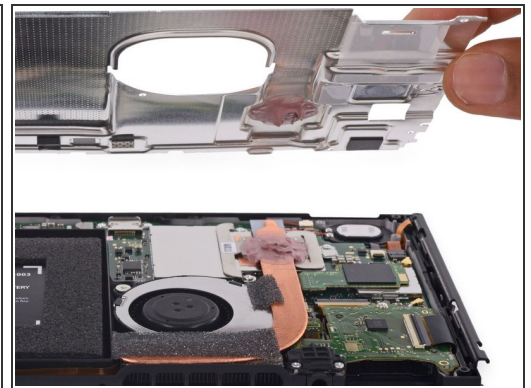
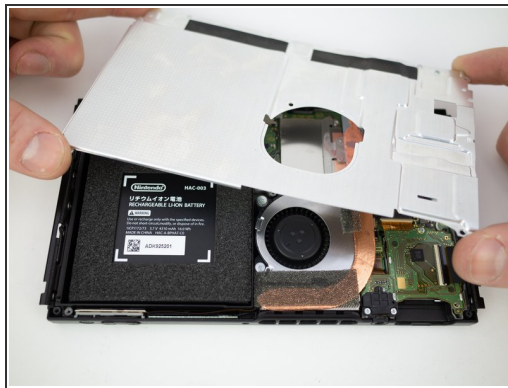
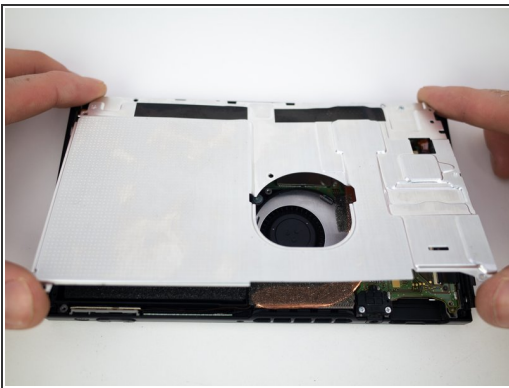
- Gently lift the micro SD card board straight up, away from the Switch to disconnect and remove it.
- ☑ During reassembly, line up the micro SD card board and lightly press on the foam pad until the press connector snaps into place to reconnect it.

Step 9 — Shield Plate



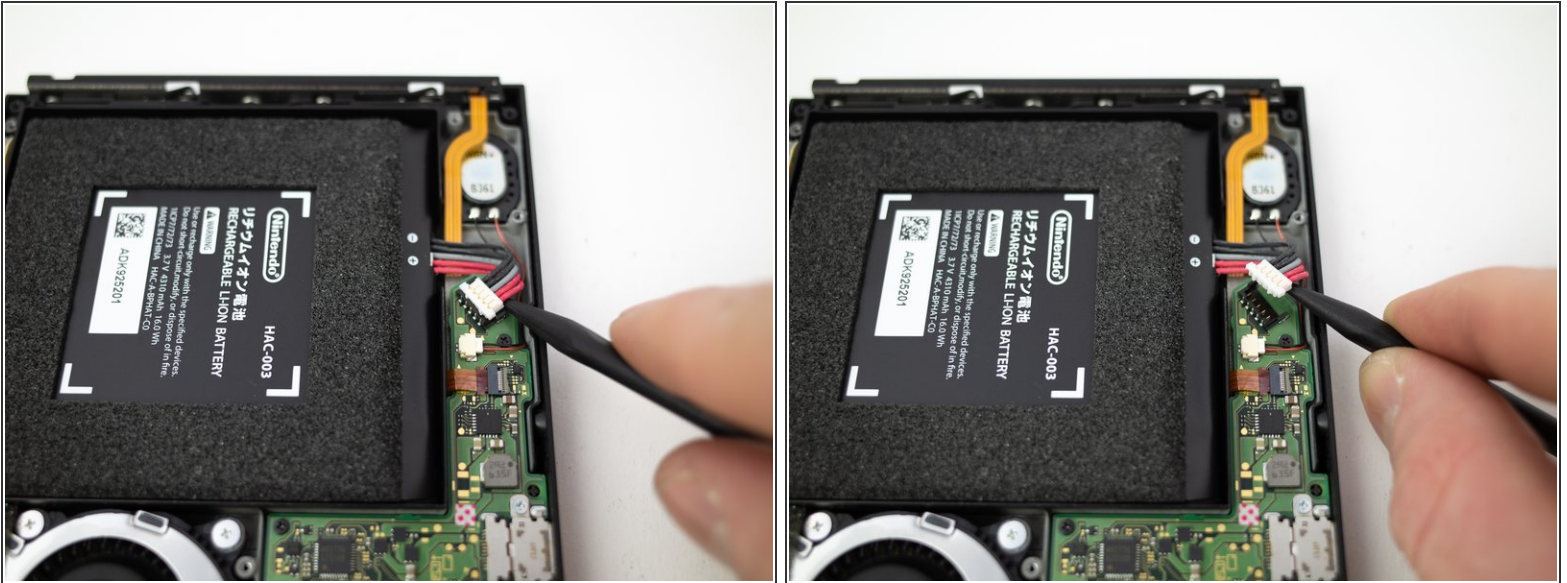
- Remove the six 3.1mm Phillips #000 screws from the shield plate.

Step 10



- Remove the shield plate from the device.
- ✦ A thick pink thermal compound bridges the gap between the shield plate and the copper heat sink underneath. For best results, whenever the shield plate is removed, refer to our [thermal paste guide](#) to remove the old thermal compound and replace it with an appropriate, thick compound such as [K5 Pro](#) during reassembly.

Step 11 — Battery Disconnect



- Insert the pointed end of a spudger underneath the white connector and pry upwards to disconnect the battery from the motherboard.

Step 12 — Heat Sink



- Remove the three 3.1mm Phillips #000 screws from the heatsink.

Step 13

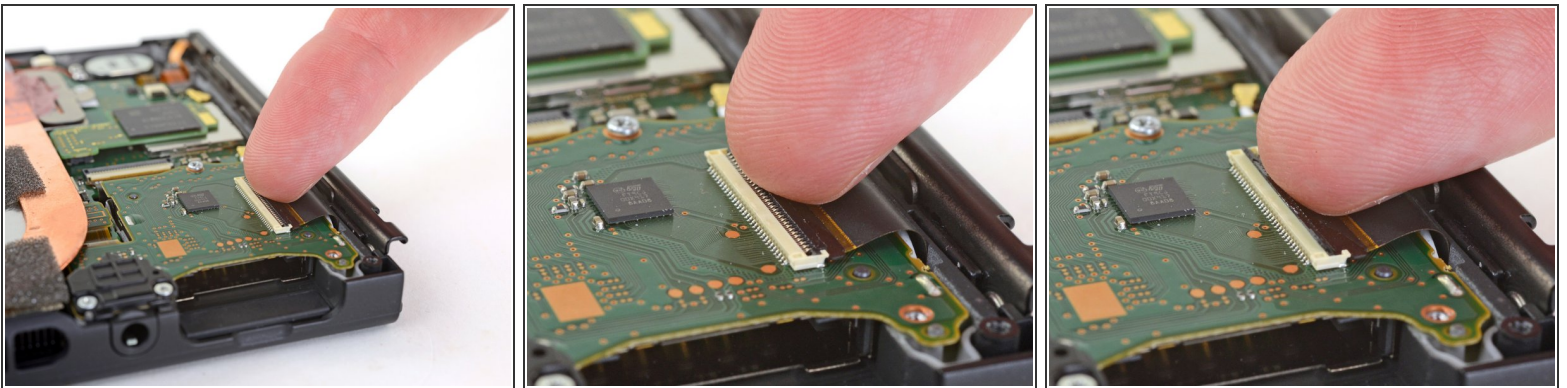


- Pull the heatsink up 45 degrees and rotate it to the right to remove.

✦ Before reassembly, follow the [thermal paste guide](#).

- Clean all the thermal paste off the underside of the heat sink using isopropyl alcohol (>90%) or Artic Silver ArctiClean.
- Clean and **replace** the thermal paste on the processor cover.

Step 14 — Headphone Jack and Game Card Board



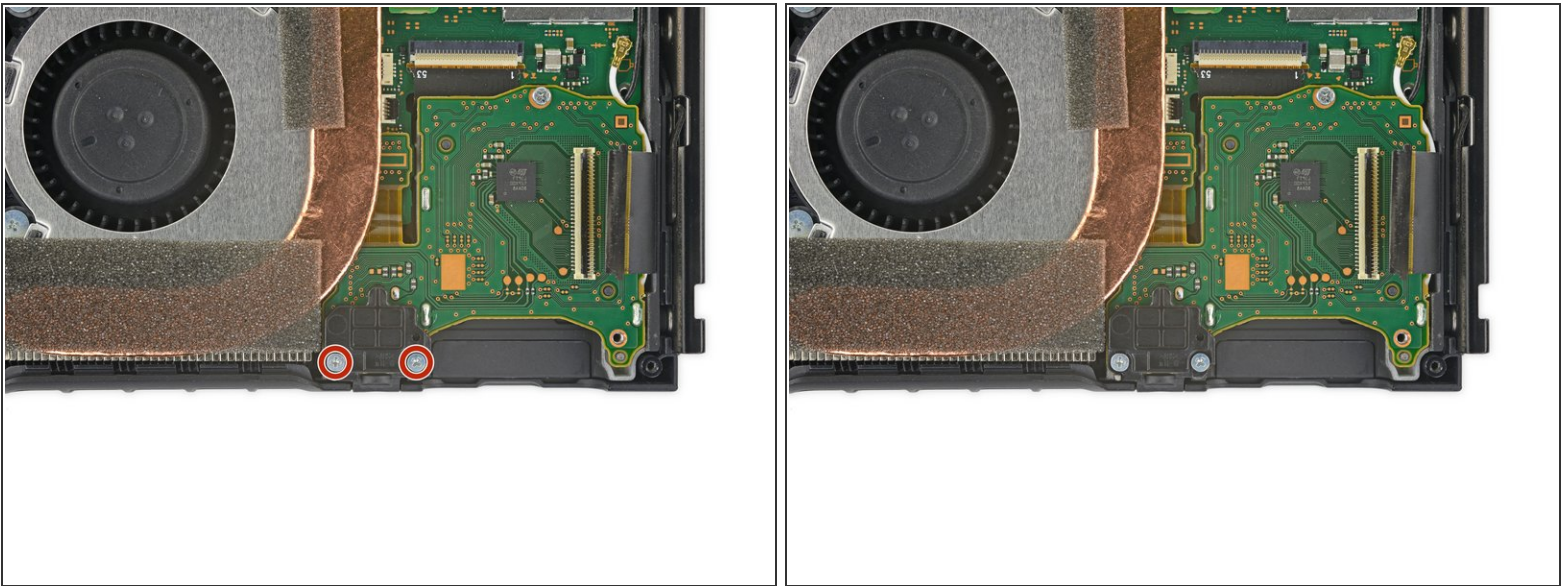
- Use a clean fingernail to flip open the lock on the game card reader [ZIF connector](#) by prying it straight up.

Step 15



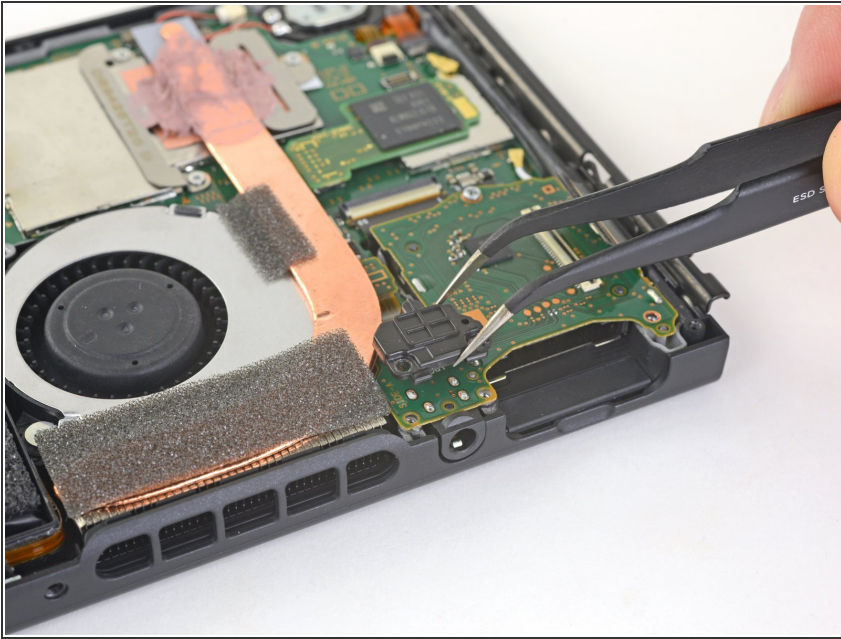
- Use the tip of a spudger to gently slide the game card reader ribbon cable out of its socket.

Step 16



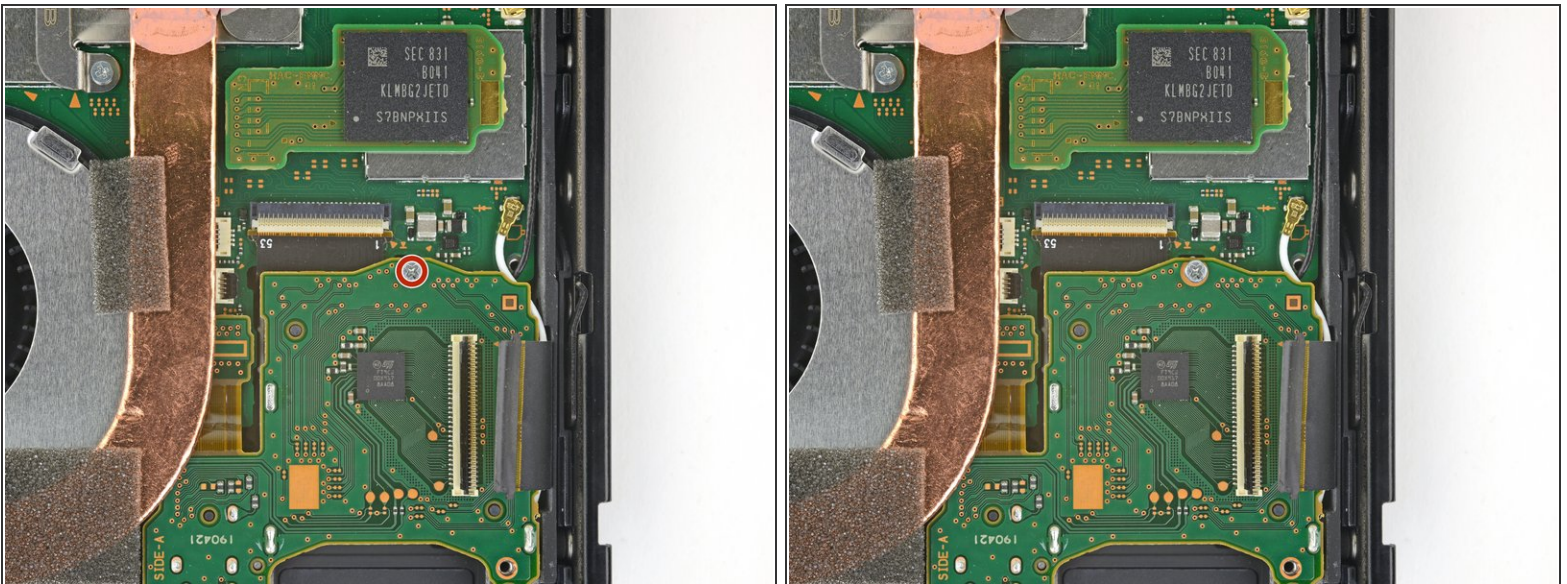
- Use a Phillips driver to remove the two 3.1 mm screws from the headphone jack bracket.

Step 17



- Remove the headphone jack bracket.

Step 18



- Use a Phillips driver to remove the single 3.1 mm screw from the headphone jack and game card board.

Step 19



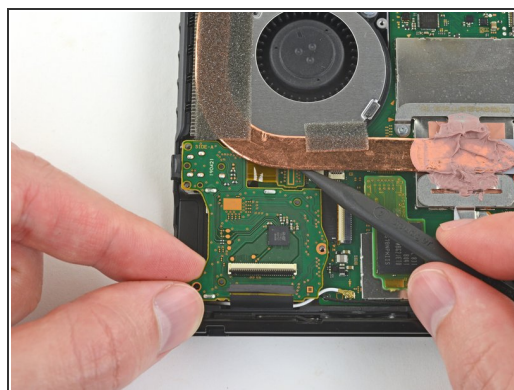
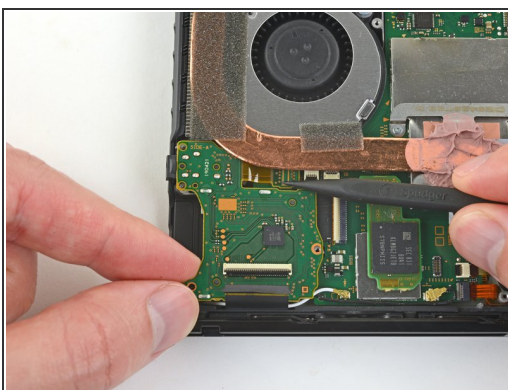
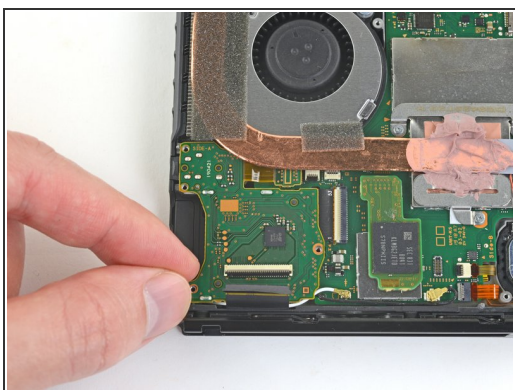
- Use the tip of a spudger to disconnect the headphone jack by prying its connector straight up.
 - ❗ The connector is partially obscured by the copper heat pipe. Make sure it disconnects completely.

Step 20



- Gently lift the game card reader board, starting with the headphone jack.
- Slide the game card reader board away from the copper heat pipe, and remove it.

Step 21 — Reassembly Note



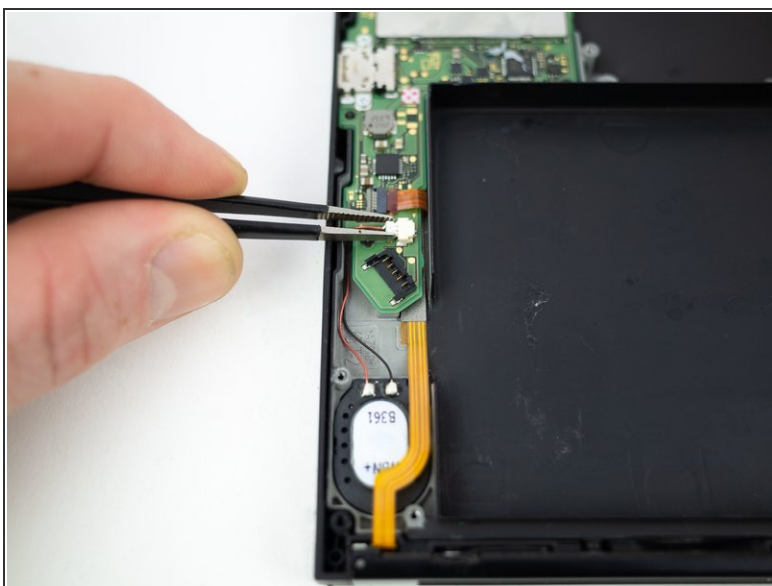
- ✦ During reassembly, to seat the headphone jack connector, pull the entire game card reader board slightly toward the top edge of the Switch so that the headphone jack connector lines up with its socket.
- ✦ Use your spudger to press the connector down until it snaps into place.
- ✦ Press all along the top of the connector to make sure it seats correctly, including the area under the heat pipe.

Step 22 — Motherboard



- Disconnect the right loudspeaker from the motherboard.

Step 23



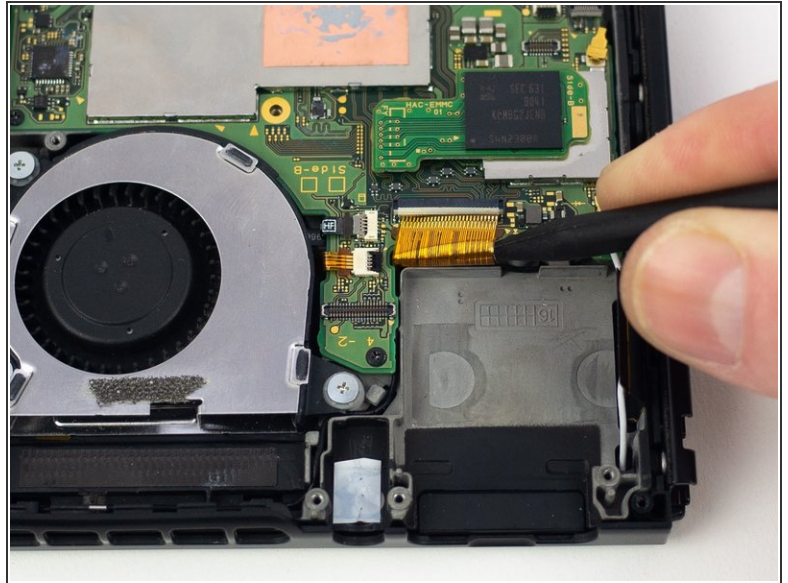
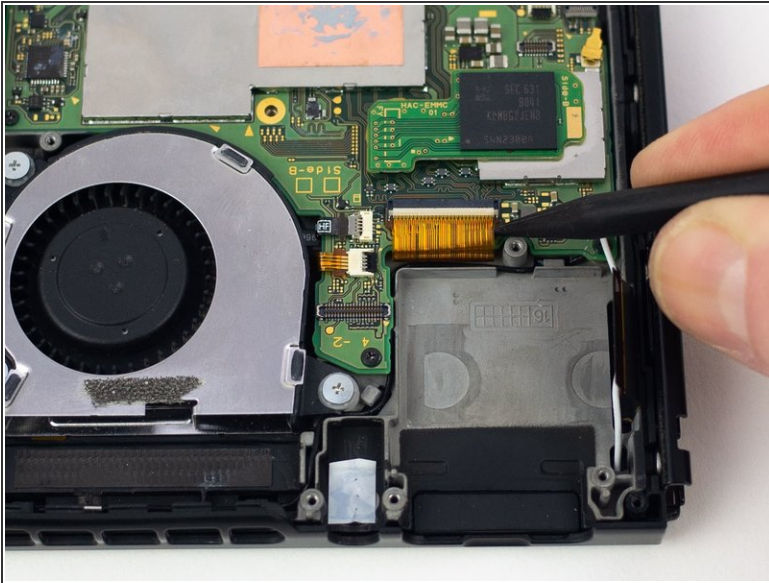
- Disconnect the left speaker from the motherboard.

Step 24



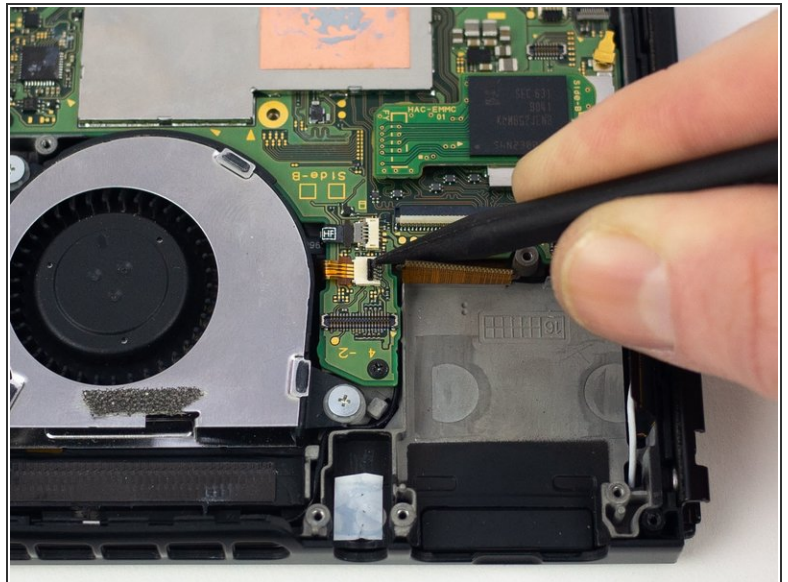
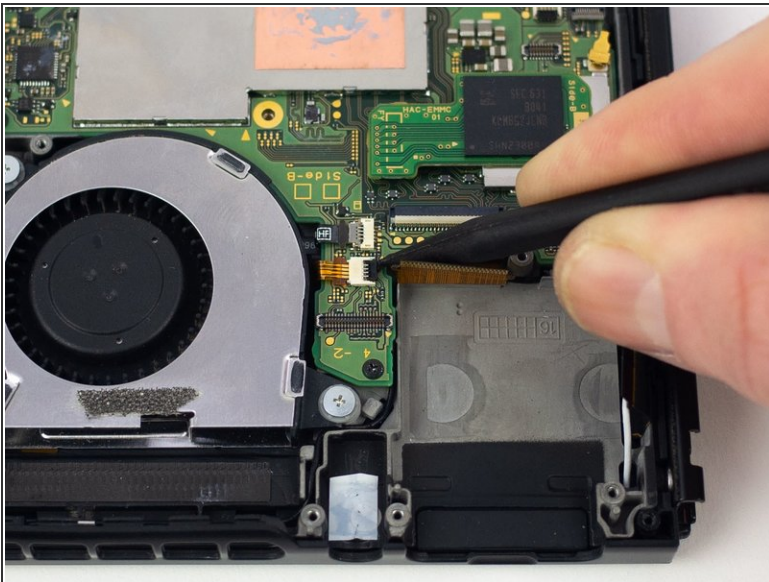
- Use a spudger to flip up the small beige locking flap on the display [ZIF](#) connector.

Step 25



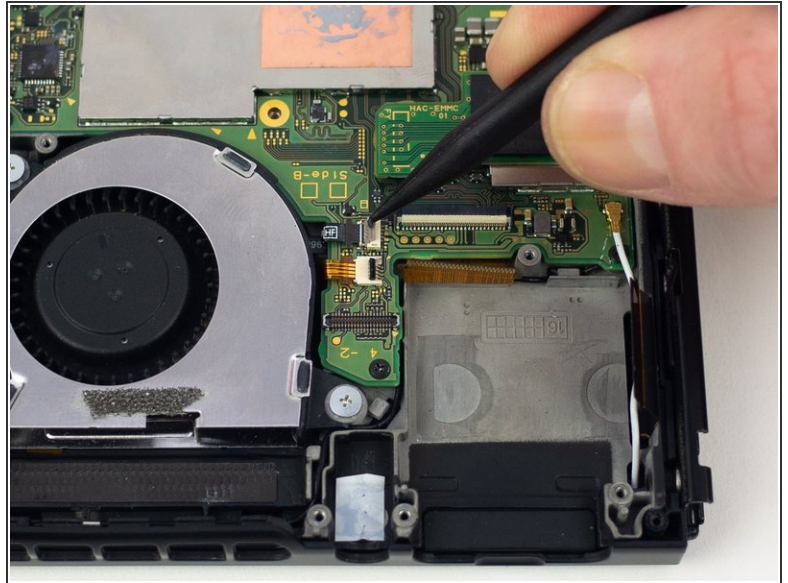
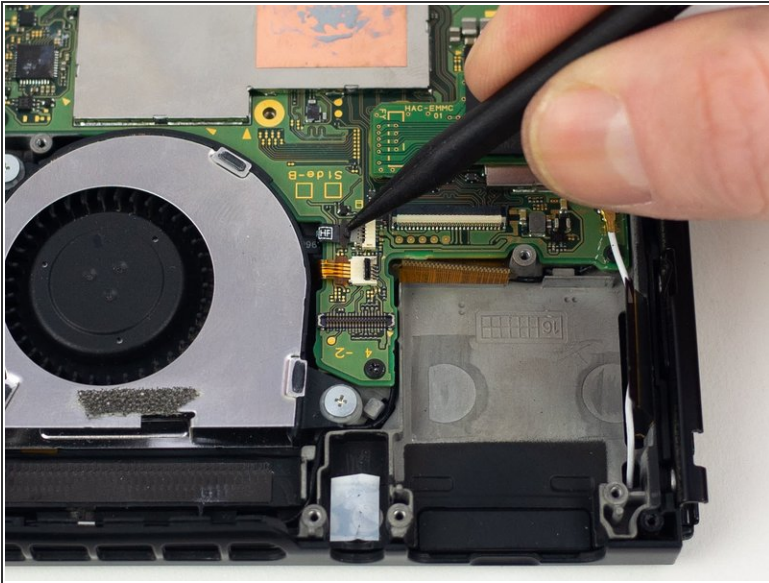
- Use the pointed end of a spudger to slide the display ribbon cable out of the ZIF connector.

Step 26



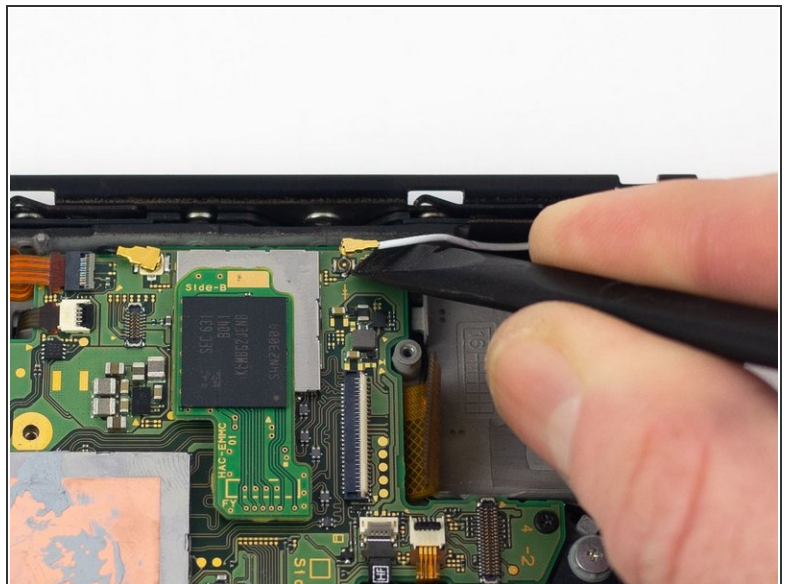
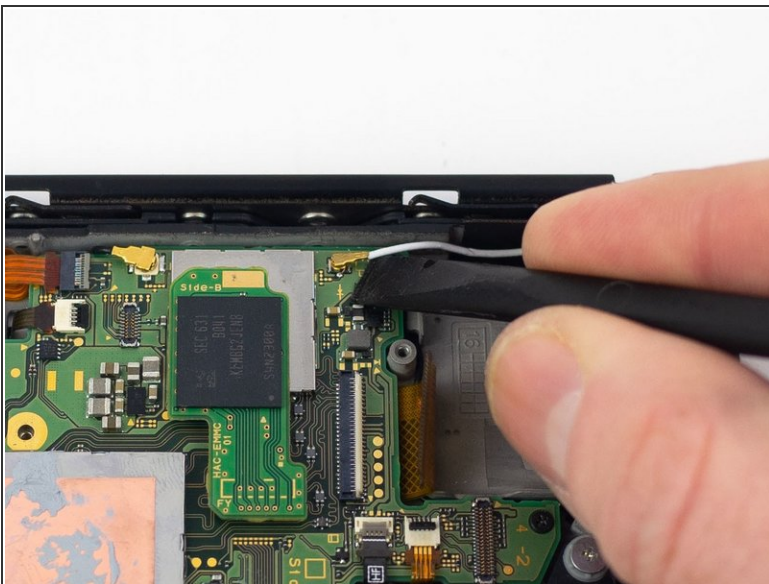
- Use a spudger to flip up the small black locking flap on the power/volume button [ZIF](#) connector.

Step 27



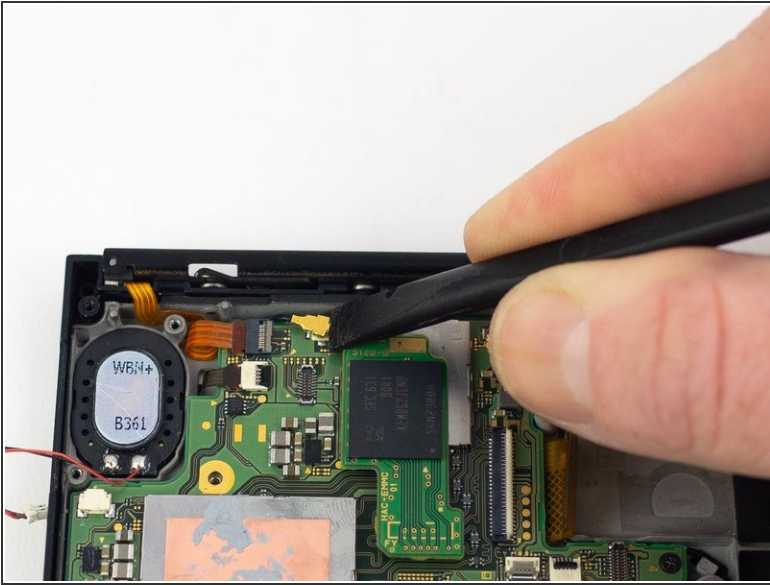
- Use a spudger to flip up the small gray locking flap on the fan [ZIF](#) connector.

Step 28



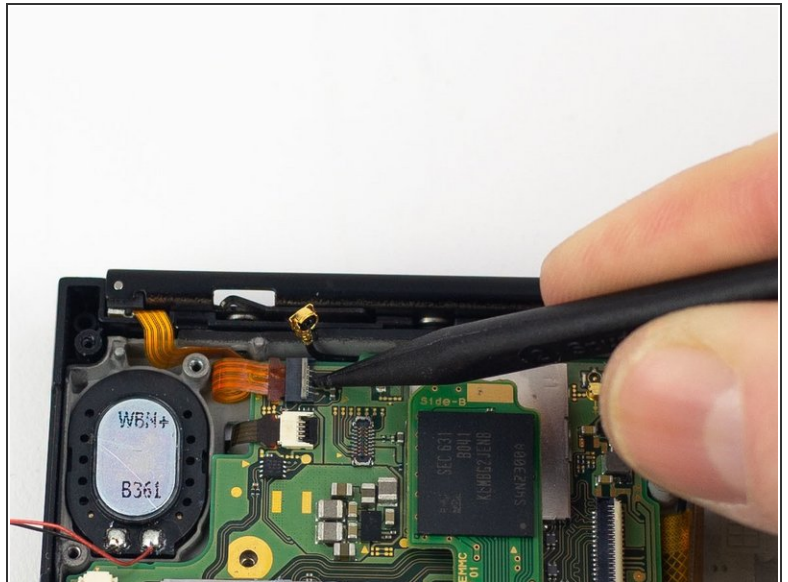
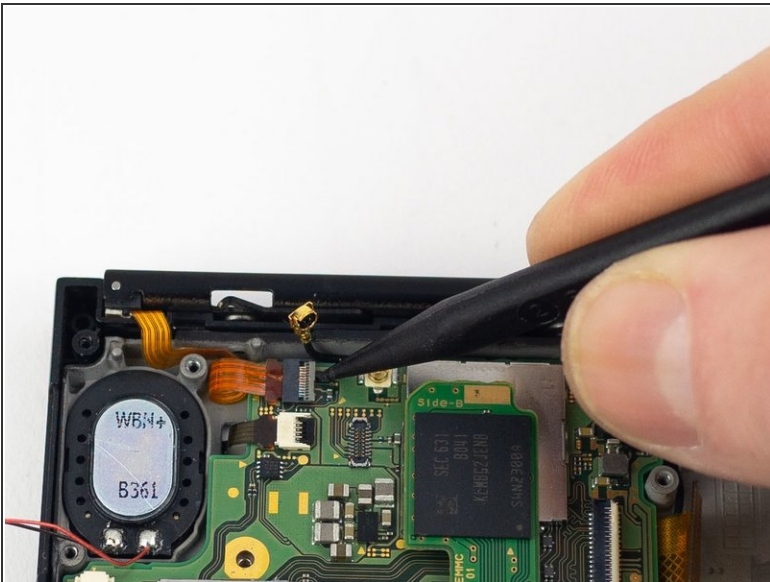
- Use the flat end of a spudger to disconnect the white [coaxial](#) antenna cable from the motherboard.

Step 29



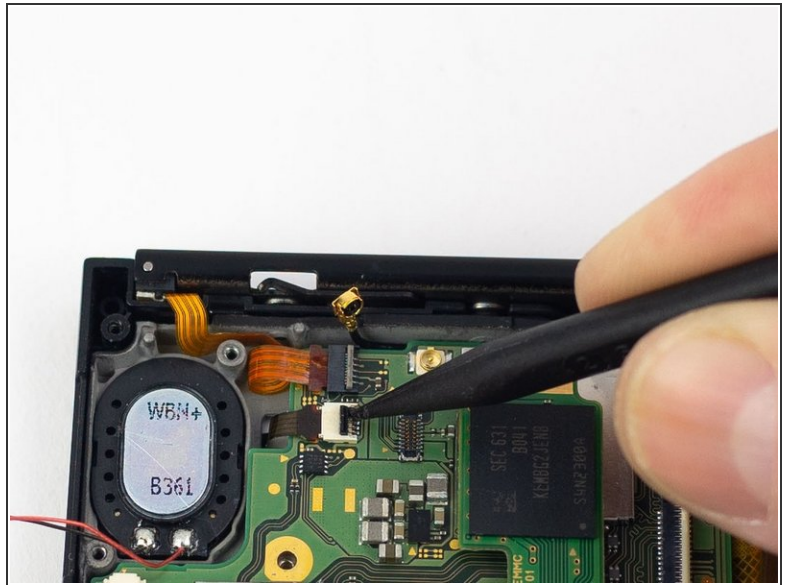
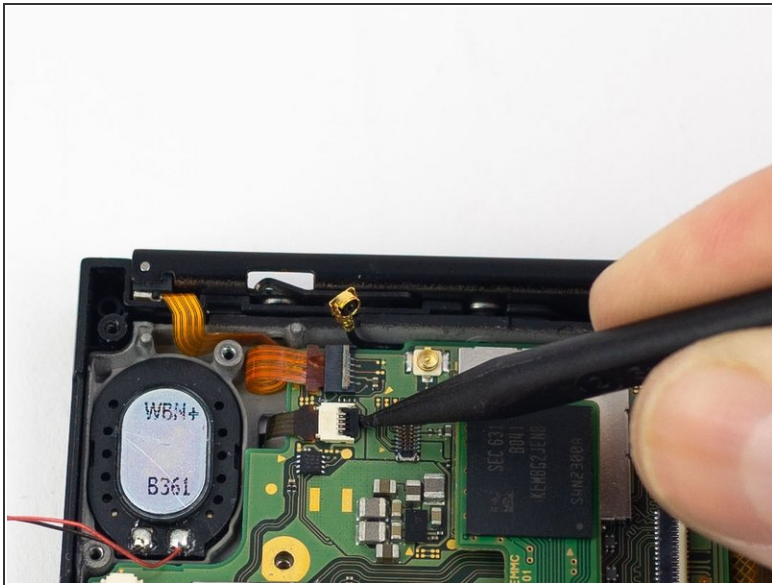
- Use the flat end of a spudger to disconnect the black [coaxial](#) antenna cable from the motherboard.

Step 30



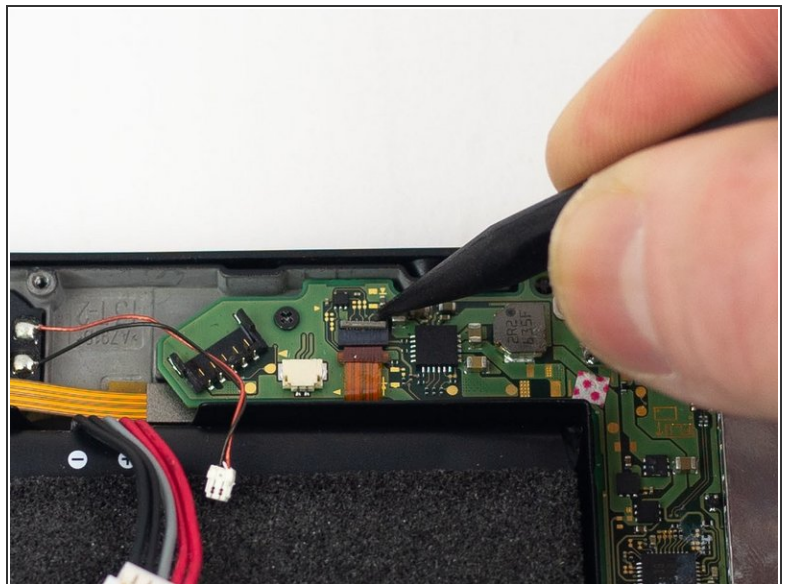
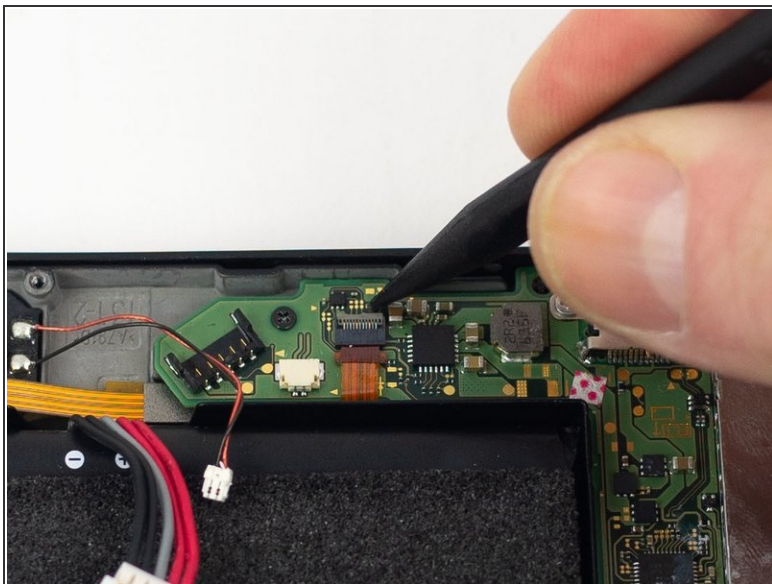
- Use a spudger to flip up the small gray locking flap on the right Joy-Con rail [ZIF](#) connector.

Step 31



- Use a spudger to flip up the small black locking flap on the [ZIF](#) connector.

Step 32



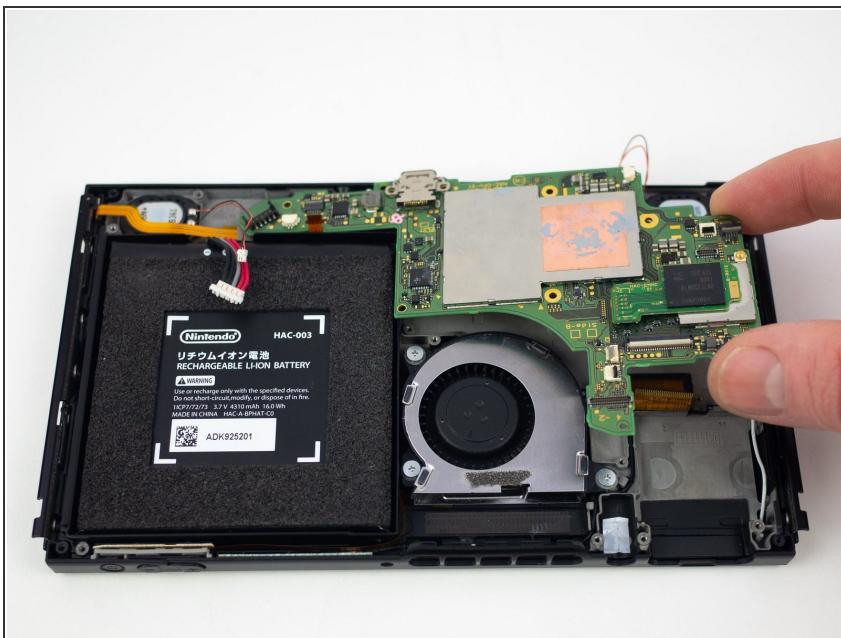
- Use a spudger to flip up the small gray locking flap on the left Joy-Con rail [ZIF](#) connector.

Step 33



- Remove the four 2.50 mm JIS #000 screws from the motherboard.
- Remove the two 3.14 mm JIS #000 screws from the USB-C port.

Step 34



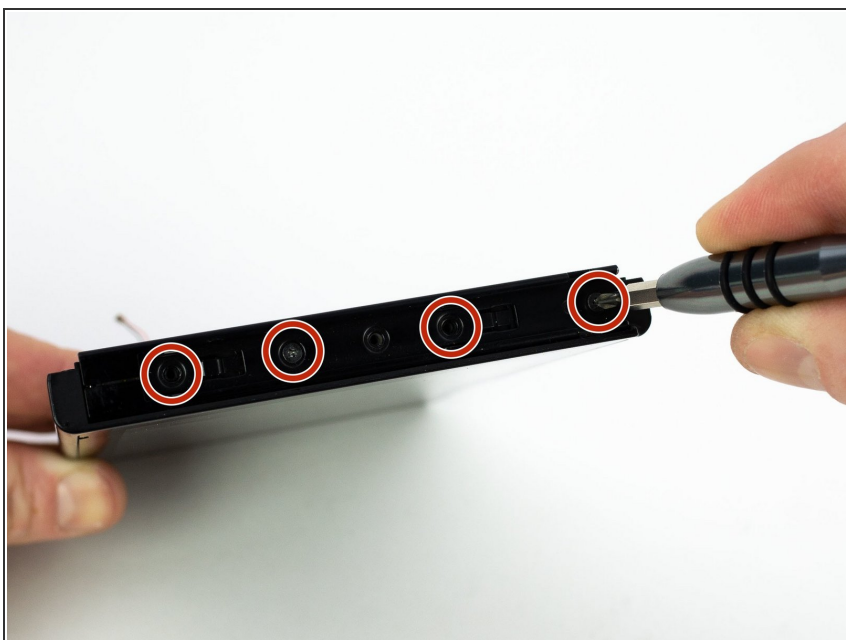
- Gently lift and wiggle the motherboard to remove.

Step 35 — Left Joy-Con Rail



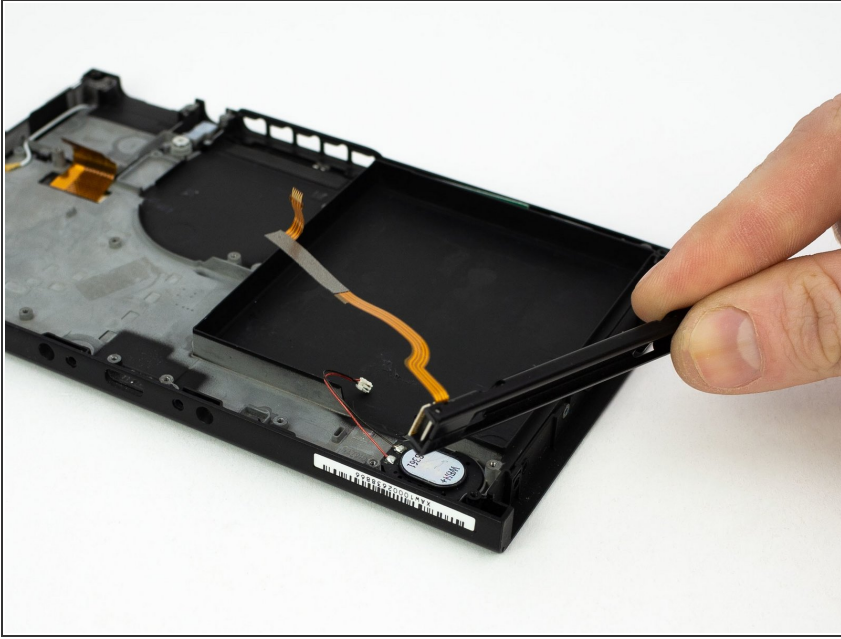
- Use the flat end of a spudger to pry up the ribbon cable.

Step 36



- Remove the four 3.8mm JIS #0 screws from the left Joy-Con rail.

Step 37



- Remove the left Joy-Con rail.

To reassemble your device, follow these instructions in reverse order.