



Nintendo Switch Loudspeaker Replacement

a free guide on how to replace the loudspeakers on a Nintendo Switch gaming console.

Written By: Blake Klein



INTRODUCTION

Follow this guide to remove the left and right loudspeakers in a Nintendo Switch gaming console.



TOOLS:

- [Tri-point Y00 Screwdriver](#) (1)
- [JIS #000 Screwdriver](#) (1)
- [ESD Safe Tweezers Blunt Nose](#) (1)



PARTS:

- [Nintendo Switch Speaker](#) (1)

Step 1 — Rear Panel



- Remove the four 6.3 mm Tri-point Y00 screws from the rear panel.

Step 2



- Remove the single 6.1 mm Phillips #000 screw from underneath the kickstand.

Step 3



- Remove the two 2.7 mm Phillips #000 screws from the bottom of the device.

Step 4



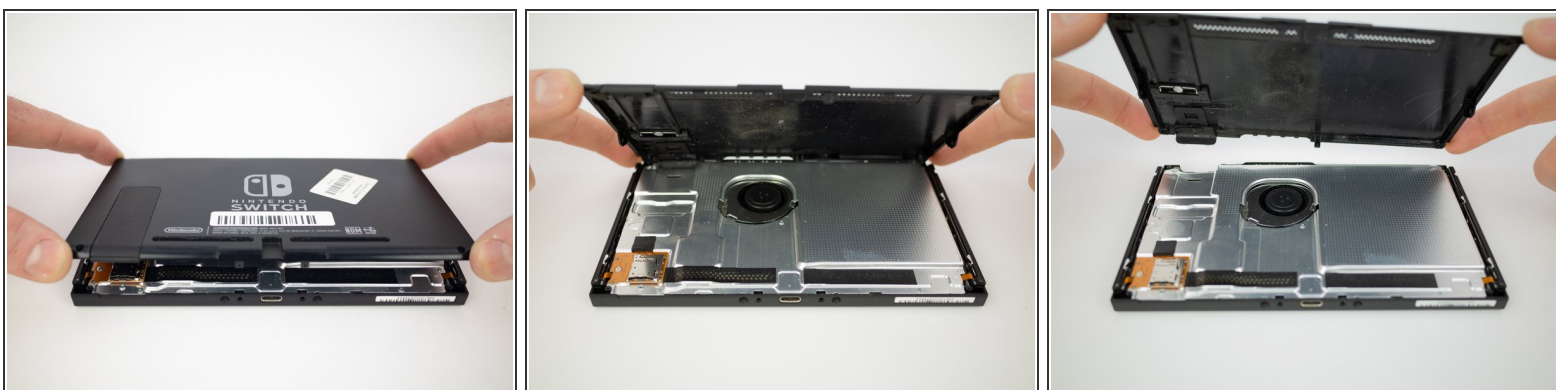
- Remove the single 2.7 mm Phillips #000 screw from the top of the device.

Step 5



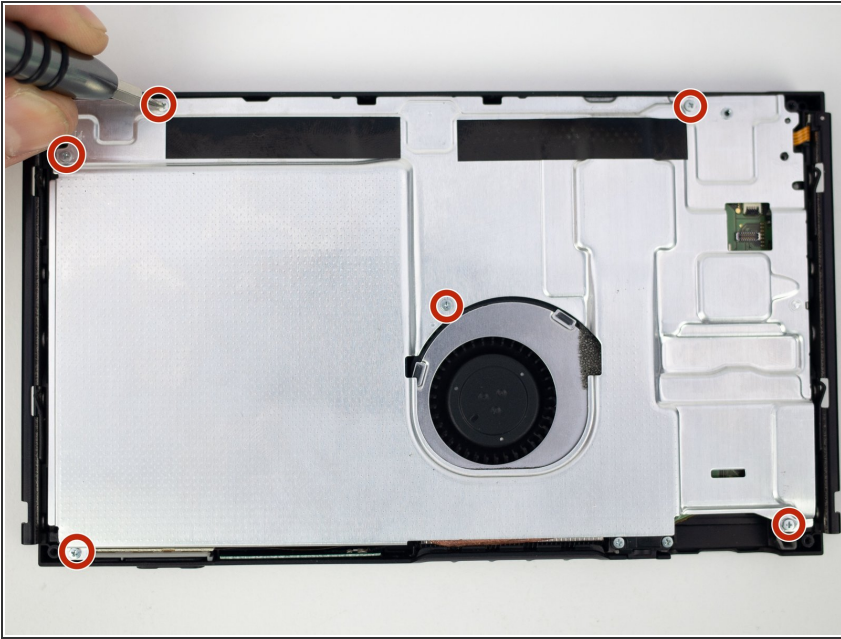
- Remove the single 3.8 mm Phillips #000 screw from the right Joy-Con rail.
- Remove the single 3.8 mm Phillips #000 screw from the left Joy-Con rail.

Step 6



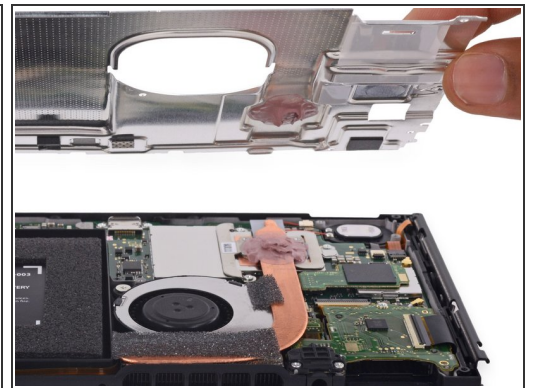
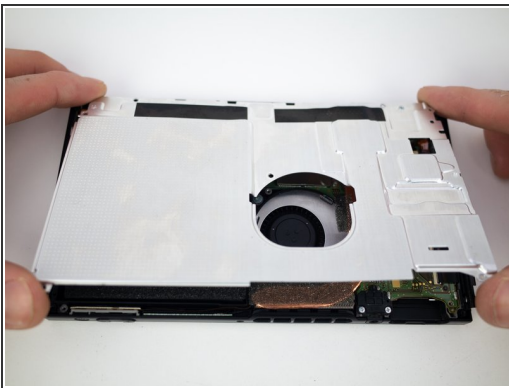
- Pull the rear panel up and off of the device.

Step 7 — Shield Plate



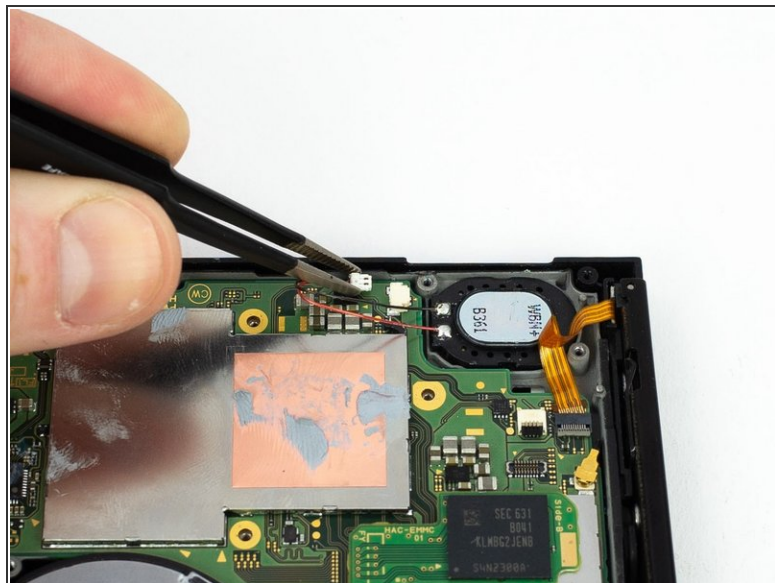
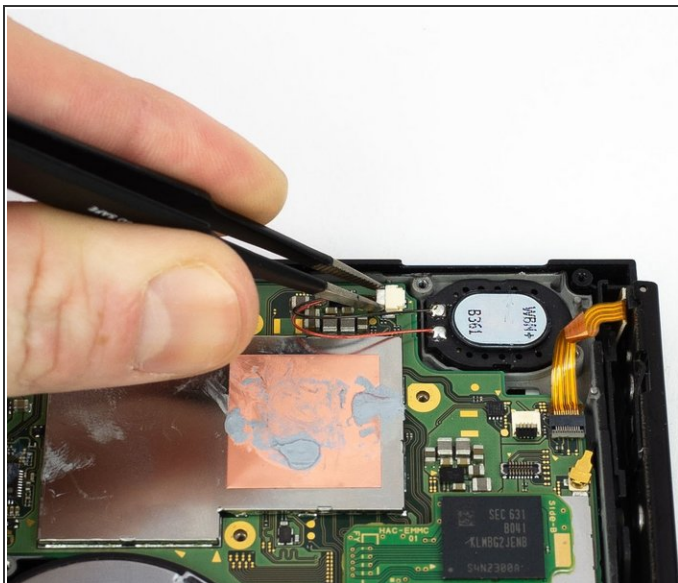
- Remove the six 3.1mm Phillips #000 screws from the shield plate.

Step 8



- Remove the shield plate from the device.
- ✦ A thick pink thermal compound bridges the gap between the shield plate and the copper heat sink underneath. For best results, whenever the shield plate is removed, refer to our [thermal paste guide](#) to remove the old thermal compound and replace it with an appropriate, thick compound such as [K5 Pro](#) during reassembly.

Step 9 — Loudspeaker



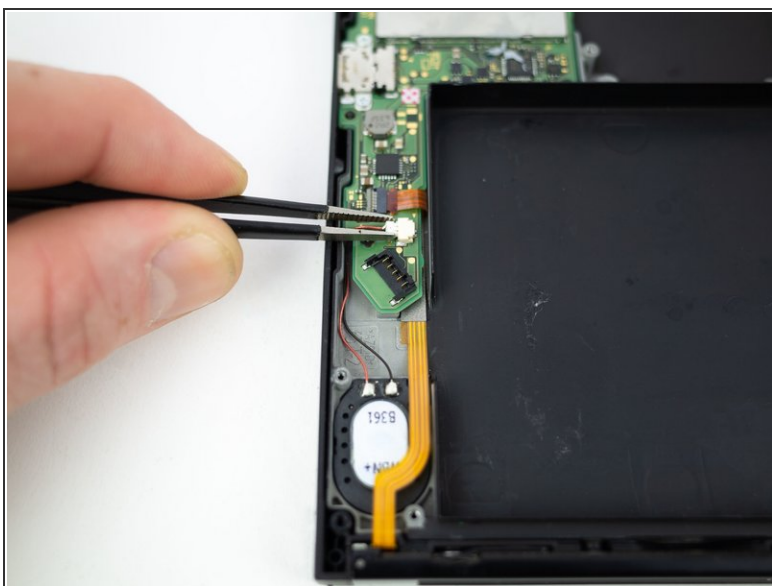
- Pull the right loudspeaker connector straight out of the socket on the motherboard.

Step 10



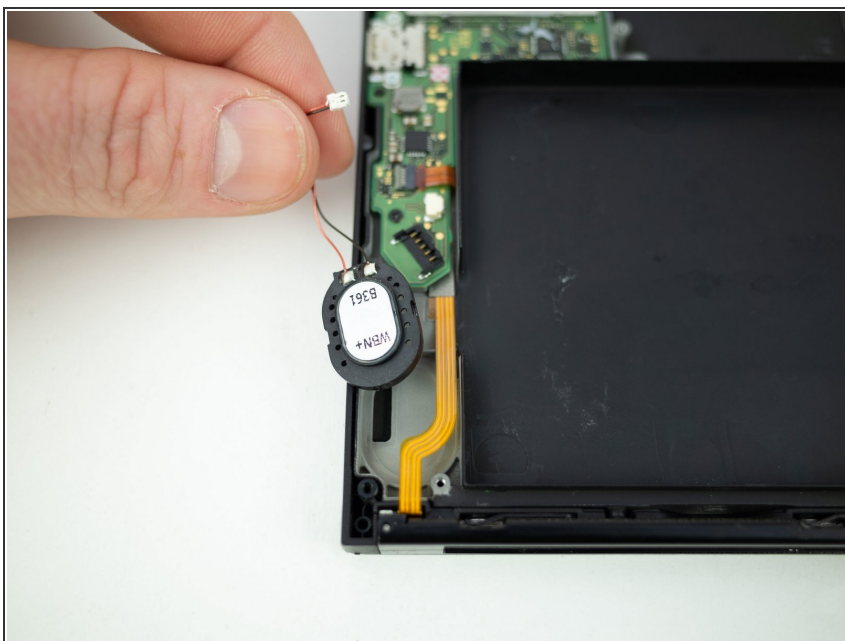
- Gently lift the loudspeaker up by its wires and pull out at a 45 degree angle to remove.

Step 11



- Pull the left loudspeaker connector straight out of the socket on the motherboard.

Step 12



- Gently lift the loudspeaker up by its wires and pull out at a 45 degree angle to remove.

To reassemble your device, follow these instructions in reverse order.