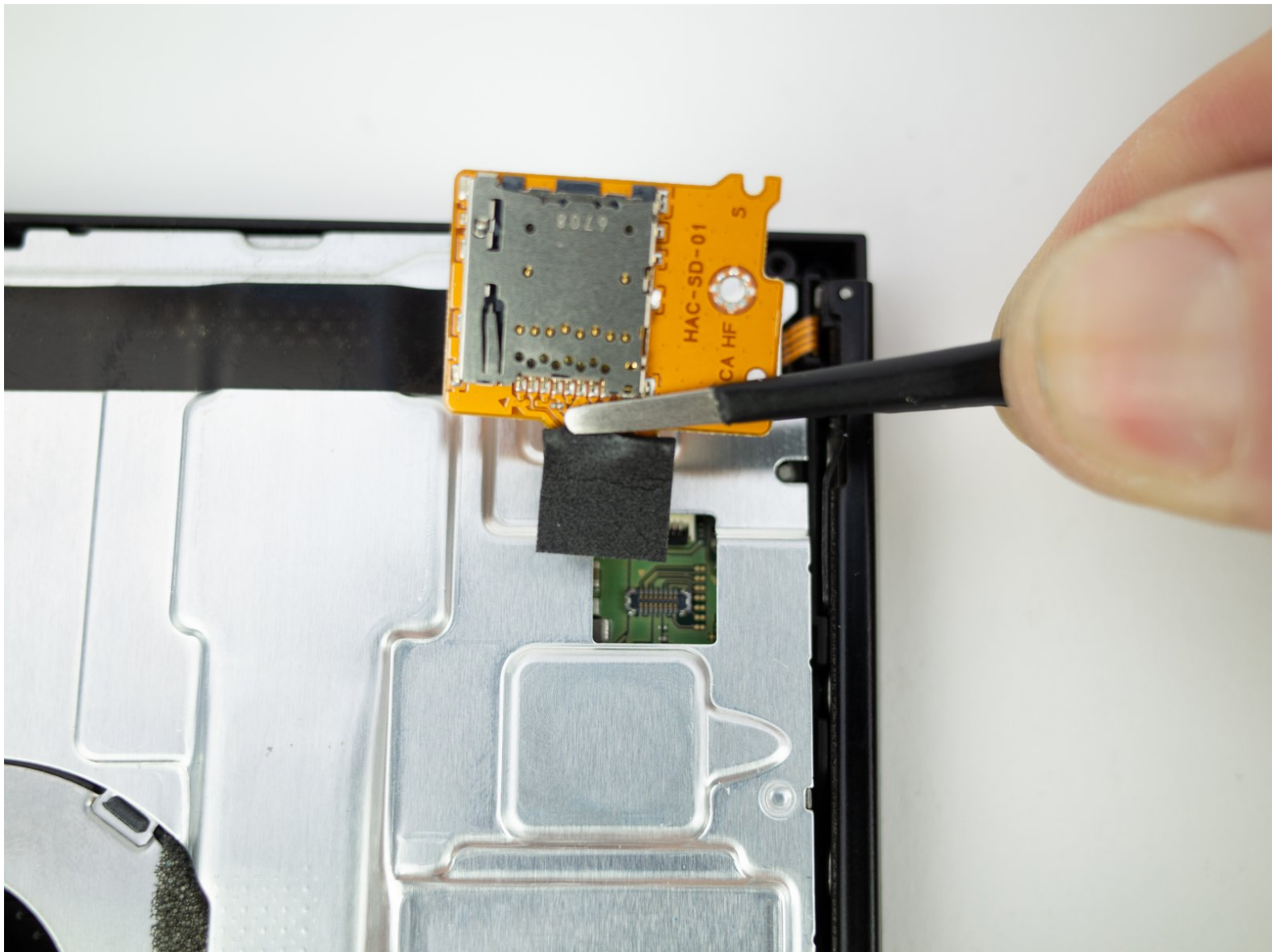




Nintendo Switch Micro SD Card Reader Replacement

A free guide showing how to replace the micro SD card reader in a Nintendo Switch gaming console.

Written By: Blake Klein



INTRODUCTION

Follow this guide to replace the micro SD card board in a Nintendo Switch gaming console.

WARNING: the battery won't be disconnected for this repair so be cautious when using metal tools around the motherboard.



TOOLS:

- [Tri-point Y00 Screwdriver](#) (1)
- [Phillips #000 Screwdriver](#) (1)



PARTS:

- [Nintendo Switch SD Card Reader](#) (1)

Step 1 — Rear Panel



- Remove the four 6.3 mm Tri-point Y00 screws from the rear panel.

Step 2



- Remove the single 6.1 mm Phillips #000 screw from underneath the kickstand.

Step 3



- Remove the two 2.7 mm Phillips #000 screws from the bottom of the device.

Step 4



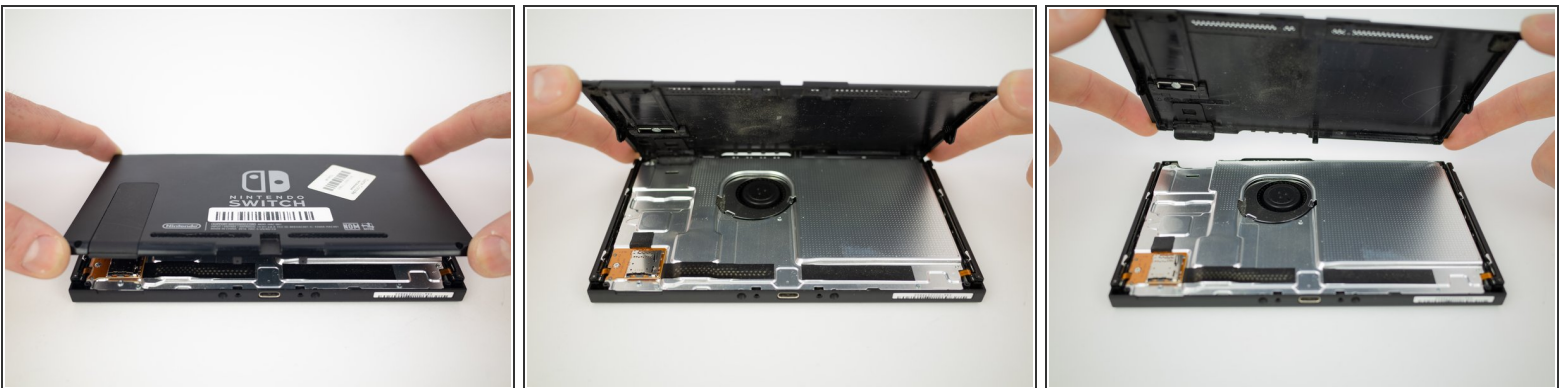
- Remove the single 2.7 mm Phillips #000 screw from the top of the device.

Step 5



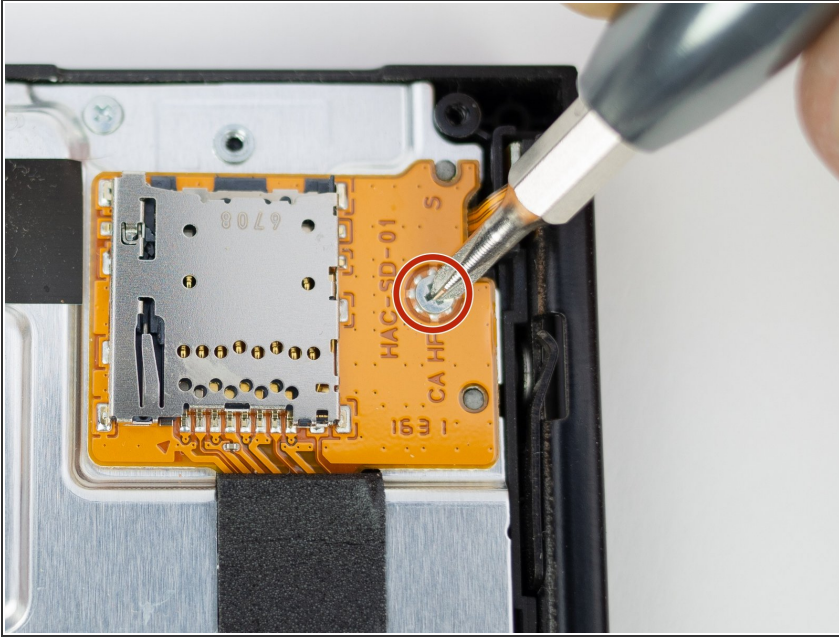
- Remove the single 3.8 mm Phillips #000 screw from the right Joy-Con rail.
- Remove the single 3.8 mm Phillips #000 screw from the left Joy-Con rail.

Step 6



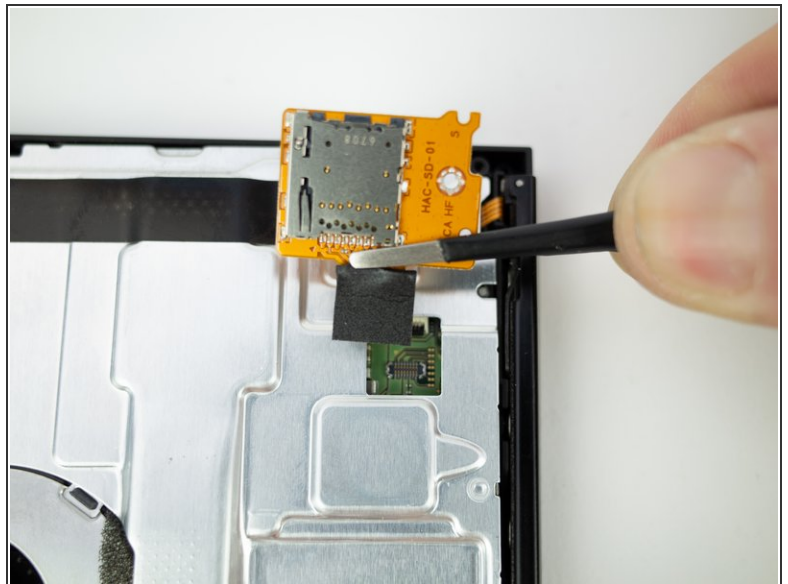
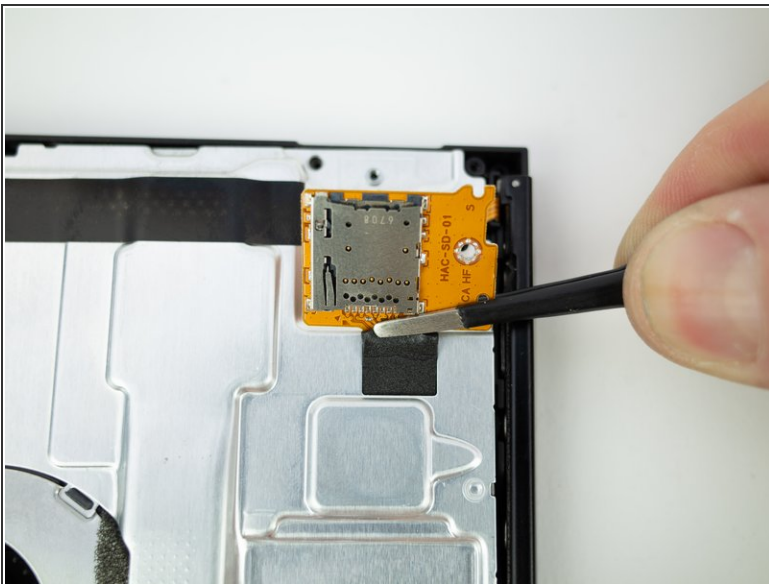
- Pull the rear panel up and off of the device.

Step 7 — Micro SD Card Reader



- Remove the single 3.1 mm Phillips screw from micro SD card board.

Step 8



- Gently lift the micro SD card board straight up, away from the Switch to disconnect and remove it.
- ☑ During reassembly, line up the micro SD card board and lightly press on the foam pad until the press connector snaps into place to reconnect it.

To reassemble your device, follow these instructions in reverse order.