



Nintendo Switch Pro Controller Battery Replacement

This guide will walk you through how to remove and replace the Nintendo Switch Pro controller's battery.

Written By: Daniel Tagalog



INTRODUCTION

If your controller's battery is not functioning properly, replace the battery using this guide. For this guide, you will need a Phillips #00 screwdriver, as well as a new battery to replace the old one. This replacement requires the removal of six screws in the handle of the controller to access the battery.



TOOLS:

- [Phillips #00 Screwdriver](#) (1)
-

Step 1 — Battery



- Flip the controller over so model stickers face the ceiling.

Step 2



- Use a Phillips #00 screwdriver to remove the two black flathead 7 mm screws that secure the handles, located at the ends of the handles.

Step 3



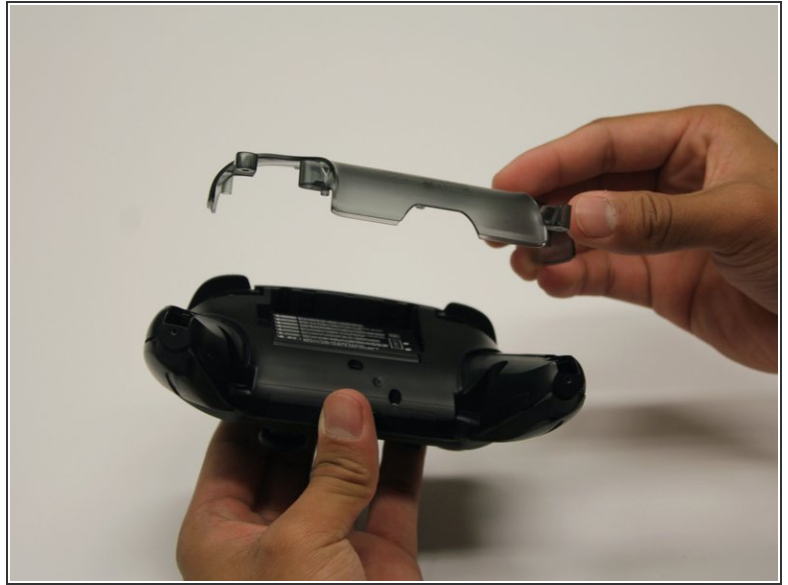
- Carefully remove the handle covers by pulling them away from the main body.

Step 4



- Use a Phillips #00 screwdriver to remove the four silver 5 mm screws that secure the clear back plastic cover.

Step 5



- Carefully pry away the clear plastic cover using your fingernail.

Step 6



- Remove the lithium-ion battery by using a fingernail or plastic opening tool to pry it up on the left side. Only a small amount of force is needed.

To reassemble your device, follow these instructions in reverse order.