



Nintendo Switch Pro Controller Buttons / D-Pad Replacement

This guide will walk you through how to replace your Switch Pro controller's buttons and D-Pad.

Written By: James Seidlinger



INTRODUCTION

The Switch Pro controller's buttons and D-Pad are the main inputs of the controller. The buttons may need to be replaced if they are unresponsive, please check out our [troubleshooting guide](#) for more information.

During disassembly be careful of sharp edges, there are a few exposed pieces of plastic that could cut you.



TOOLS:

- [Phillips #00 Screwdriver](#) (1)
-

Step 1 — Battery



- Flip the controller over so model stickers face the ceiling.

Step 2



- Use a Phillips #00 screwdriver to remove the two black flathead 7 mm screws that secure the handles, located at the ends of the handles.

Step 3



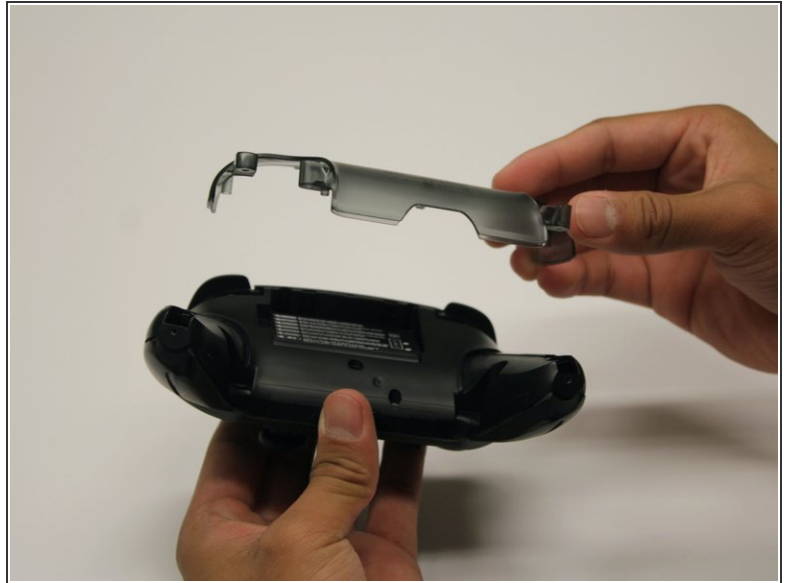
- Carefully remove the handle covers by pulling them away from the main body.

Step 4



- Use a Phillips #00 screwdriver to remove the four silver 5 mm screws that secure the clear back plastic cover.

Step 5



- Carefully pry away the clear plastic cover using your fingernail.

Step 6



- Remove the lithium-ion battery by using a fingernail or plastic opening tool to pry it up on the left side. Only a small amount of force is needed.

Step 7 — Buttons / D-Pad



- Remove the five 5mm roundhead screws with the Phillips #00 screwdriver.

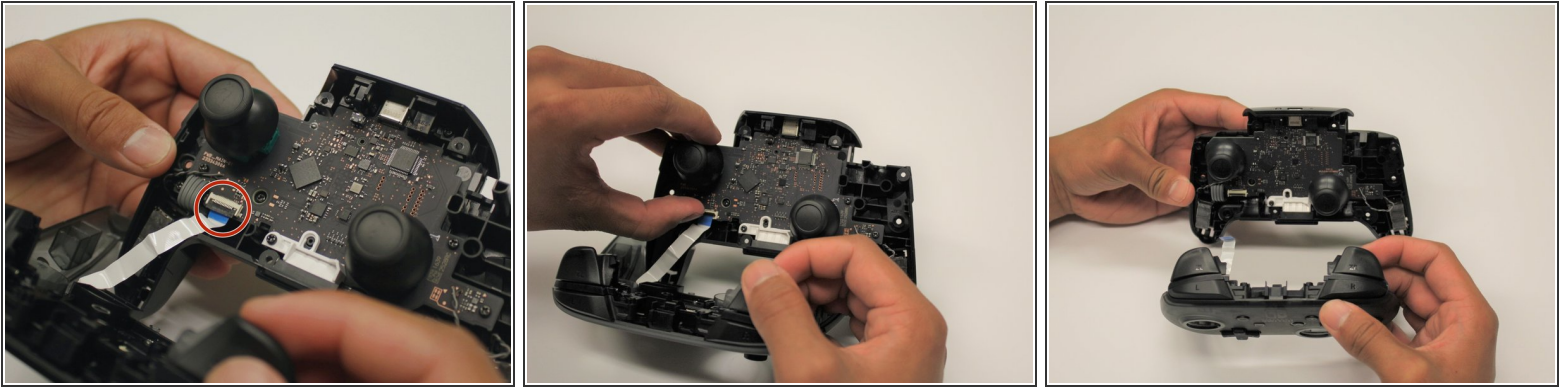
Step 8



- Carefully pry the front plate off of the body using an iFixit opening tool.
- Separate the plastic covers by pulling it apart from the controller body.

⚠ Avoid using excessive force when pulling the cover off to prevent damage to the white ribbon cable.

Step 9



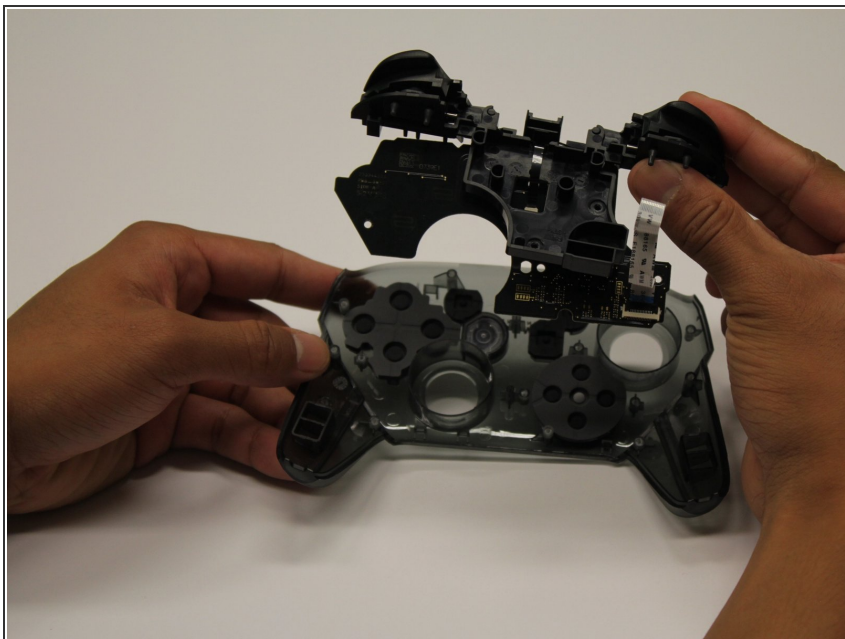
- Use your fingernail to lift the black ribbon cable clip.
- Carefully remove the ribbon cable from the connector.
- ⓘ Only a small amount of force should be needed to remove the ribbon cable.

Step 10



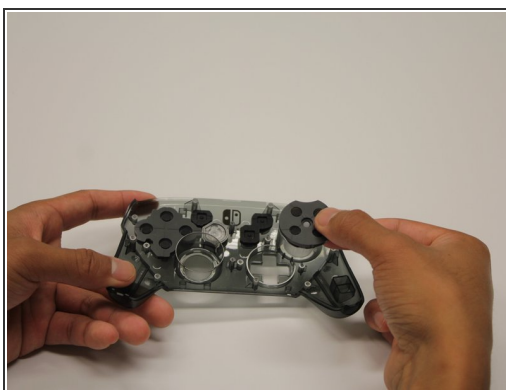
- Remove the four screws on the top circuit board using a Phillips #00 screwdriver.

Step 11



- Remove the top circuit board.

Step 12



- Remove the button you wish to replace by pulling it out of its slot

To reassemble your device, follow these instructions in reverse order.