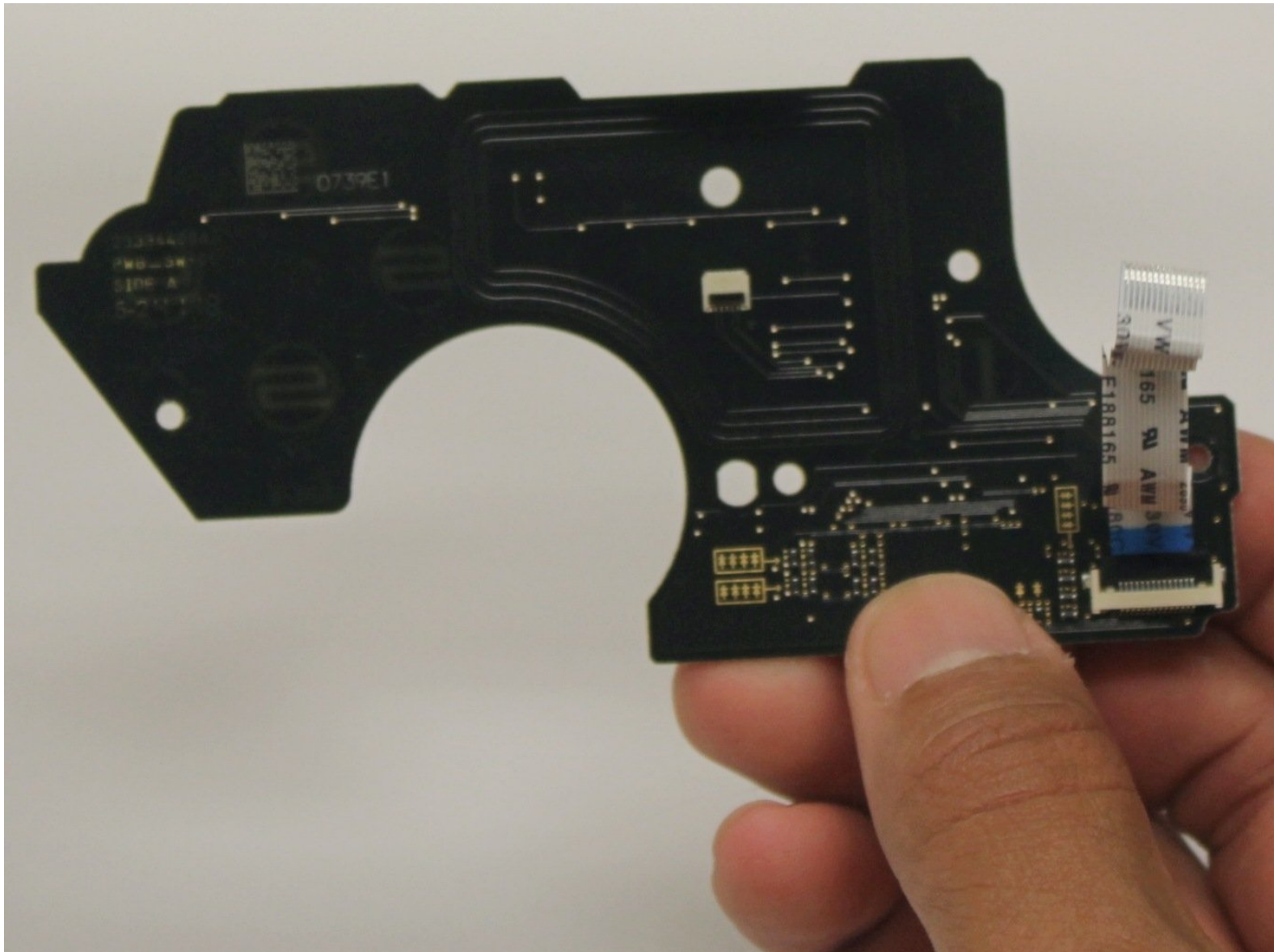




# Nintendo Switch Pro Controller Front Button Replacement

Use this guide to replace the Nintendo Switch Pro Controller front button contact board.

Written By: Daniel Tagalog



---

## INTRODUCTION

If your front buttons are sticky, unresponsive, or will not press down all the way, use this guide to remove and replace your buttons. This guide requires a Phillips #00 screwdriver for screw removal.

---



### TOOLS:

- [Phillips #00 Screwdriver](#) (1)
-

## Step 1 — Battery



- Flip the controller over so model stickers face the ceiling.

## Step 2



- Use a Phillips #00 screwdriver to remove the two black flathead 7 mm screws that secure the handles, located at the ends of the handles.

### Step 3



- Carefully remove the handle covers by pulling them away from the main body.

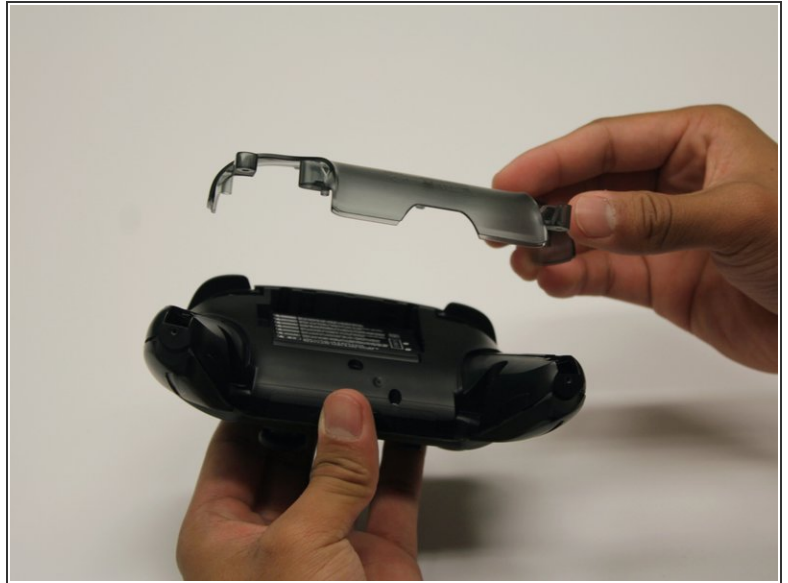
### Step 4



- Use a Phillips #00 screwdriver to remove the four silver 5 mm screws that secure the clear back plastic cover.



## Step 5



- Carefully pry away the clear plastic cover using your fingernail.

## Step 6



- Remove the lithium-ion battery by using a fingernail or plastic opening tool to pry it up on the left side. Only a small amount of force is needed.

## Step 7 — Front Button Contact Board



- Remove the five 5mm roundhead screws with the Phillips #00 screwdriver.

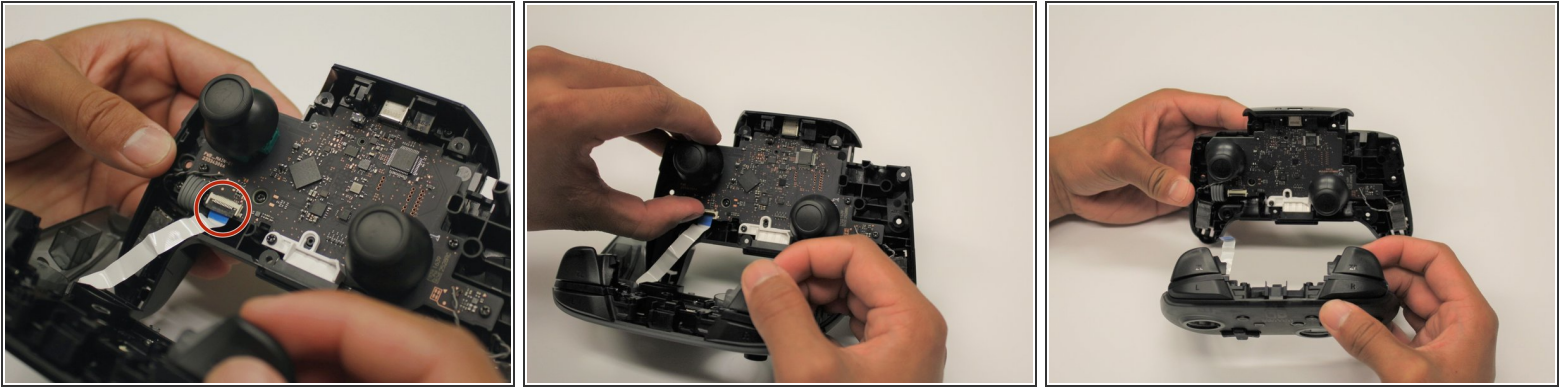
## Step 8



- Carefully pry the front plate off of the body using an iFixit opening tool.
- Separate the plastic covers by pulling it apart from the controller body.

⚠ Avoid using excessive force when pulling the cover off to prevent damage to the white ribbon cable.

## Step 9



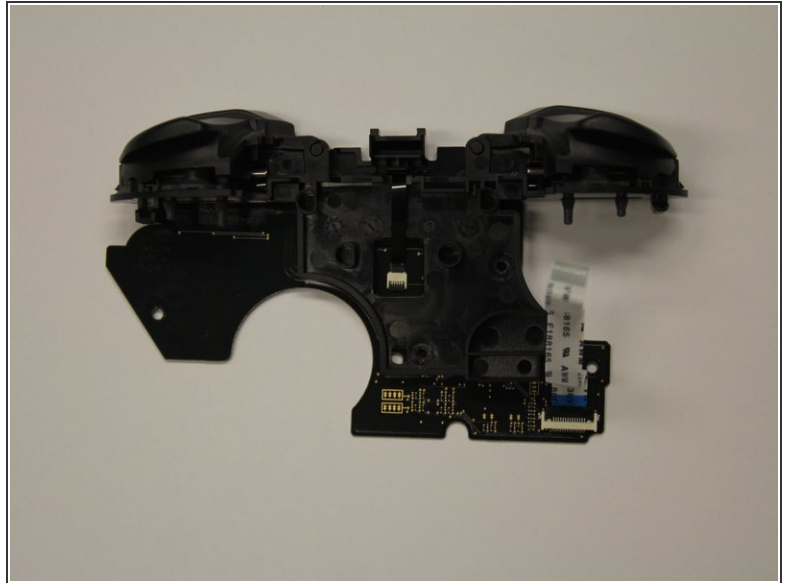
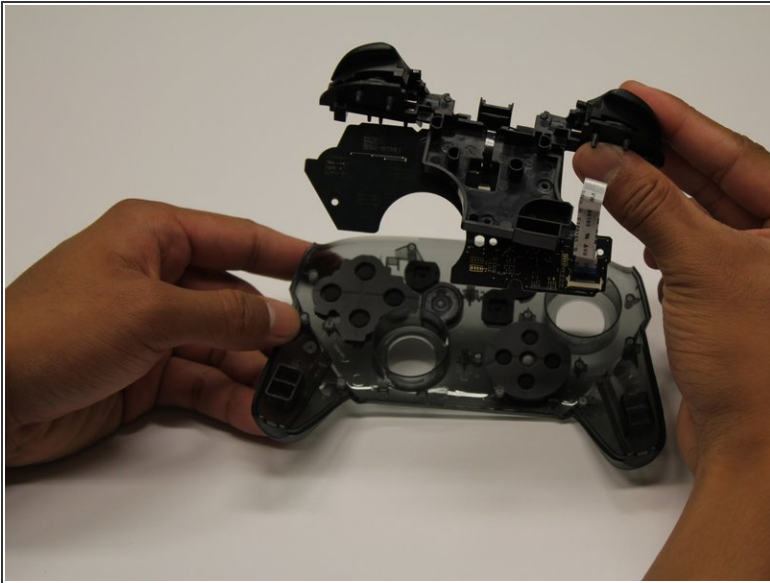
- Use your fingernail to lift the black ribbon cable clip.
- Carefully remove the ribbon cable from the connector.
- ⓘ Only a small amount of force should be needed to remove the ribbon cable.

## Step 10



- Remove the four screws on the top circuit board using a Phillips #00 screwdriver.

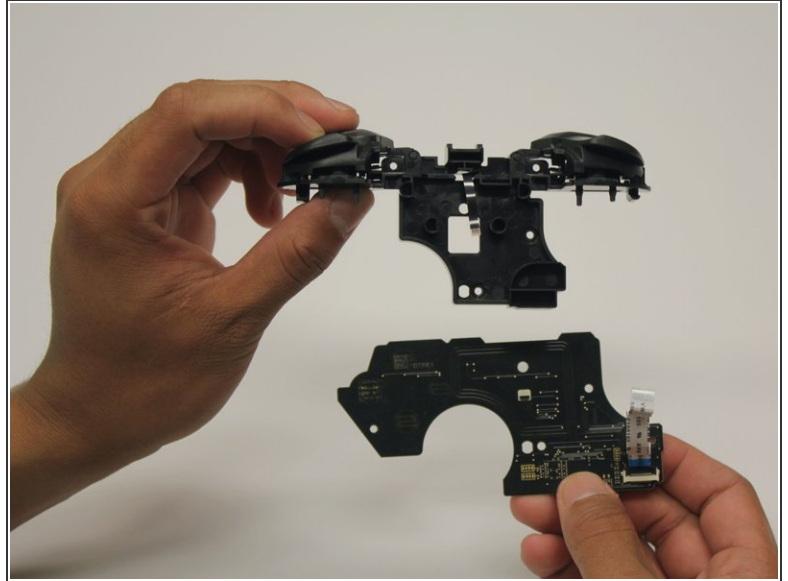
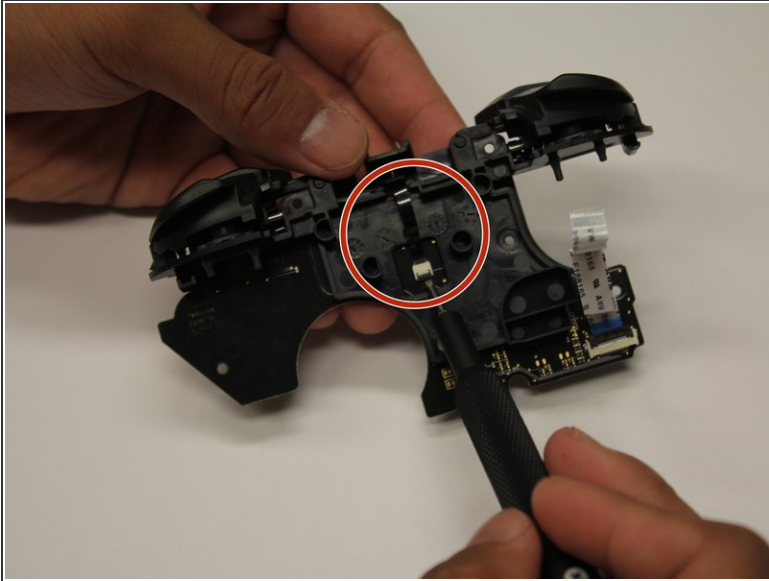
## Step 11




- Remove the top circuit board.



## Step 12



- Use an iFixit opening tool to flip up the locking tab on the ZIF connector.
  - Remove the black ribbon cable.
  - Remove the bottom board.
-  Only a small amount of force should be needed to remove the ribbon cable.

To reassemble your device, follow these instructions in reverse order.