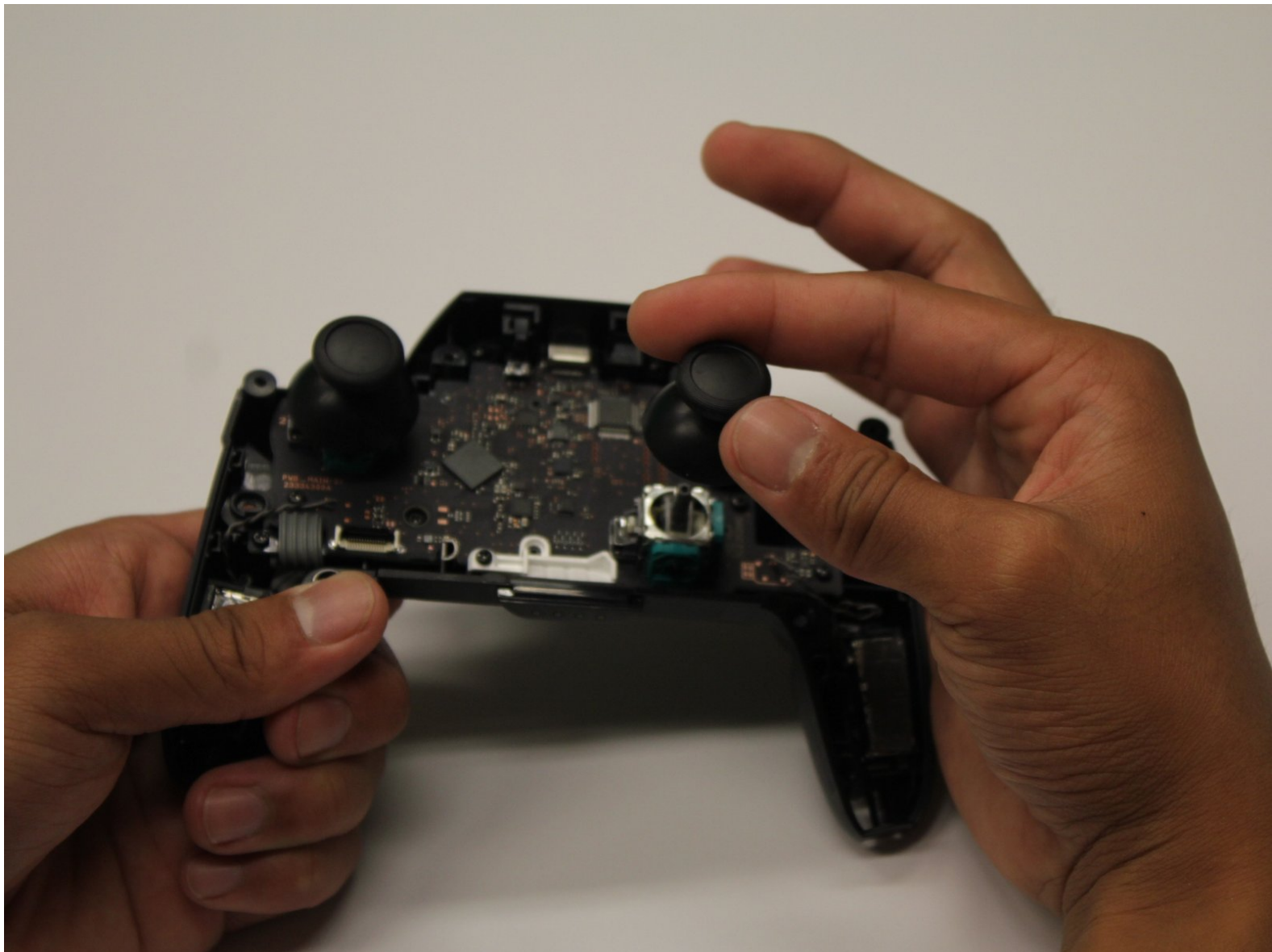




Nintendo Switch Pro Controller Joystick Caps Replacement

This guide will walk you through how to remove the joystick caps for the Nintendo Switch Pro Controller.

Written By: Christian Rudnick



INTRODUCTION

After using the Nintendo Switch Pro Controller (Model HAC-001), it is common that the joystick cap becomes cracked or broken. Though the caps are not integral to the functionality of the controller, the caps provide comfort and ease of use of the joysticks. This guide helps with only the replacement of the joystick caps, not the joystick itself.



TOOLS:

- [Phillips #00 Screwdriver](#) (1)
-

Step 1 — Battery



- Flip the controller over so model stickers face the ceiling.

Step 2



- Use a Phillips #00 screwdriver to remove the two black flathead 7 mm screws that secure the handles, located at the ends of the handles.

Step 3



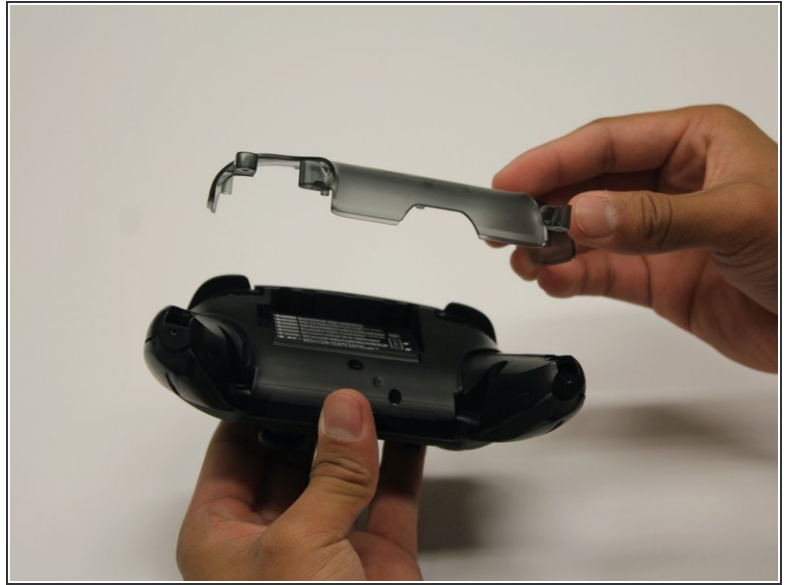
- Carefully remove the handle covers by pulling them away from the main body.

Step 4



- Use a Phillips #00 screwdriver to remove the four silver 5 mm screws that secure the clear back plastic cover.

Step 5



- Carefully pry away the clear plastic cover using your fingernail.

Step 6



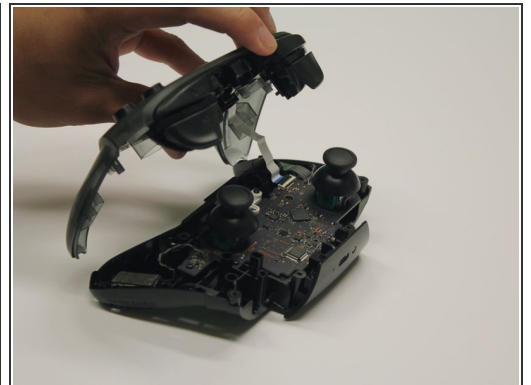
- Remove the lithium-ion battery by using a fingernail or plastic opening tool to pry it up on the left side. Only a small amount of force is needed.

Step 7 — Joystick Caps



- Remove the five 5mm roundhead screws with the Phillips #00 screwdriver.

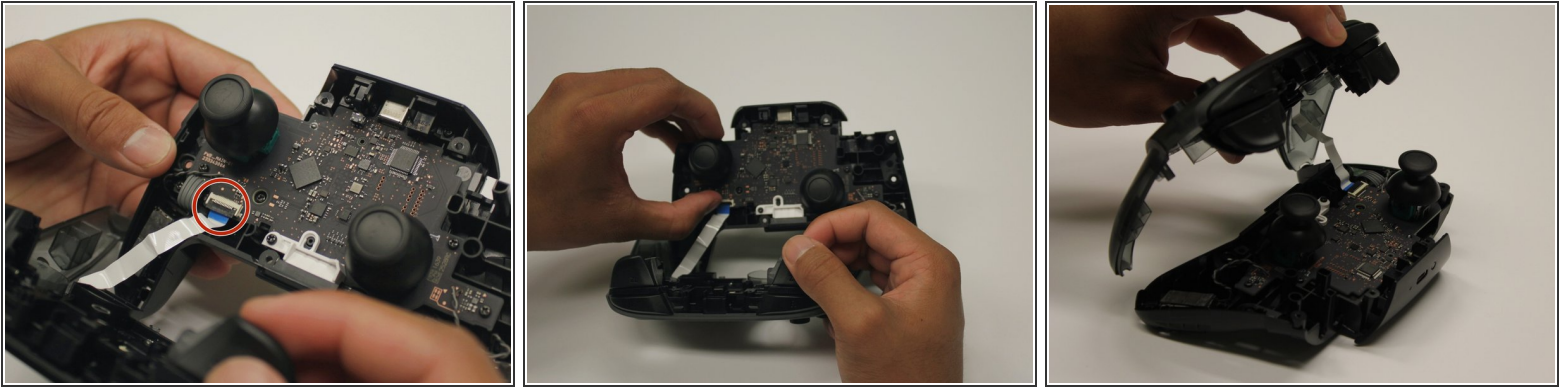
Step 8



- Carefully pry the front plate off of the body using an iFixit opening tool.
- Separate the plastic covers by pulling it apart from the controller body.

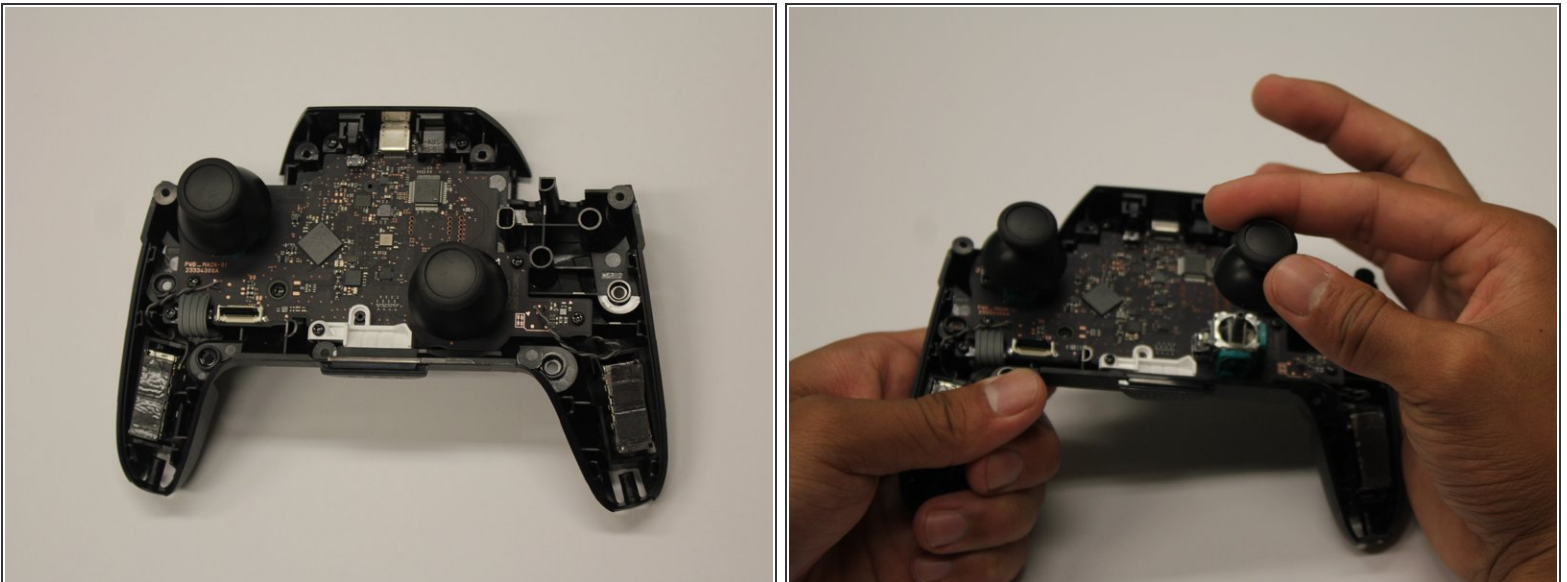
⚠ Avoid using excessive force when pulling the cover off to prevent damage to the white ribbon cable.

Step 9



- Use an iFixit opening tool to flip up the locking tab on the ZIF connector.
- Carefully remove the ribbon cable from the connector.
- ⓘ Only a small amount of force should be needed to remove the ribbon cable.

Step 10



- With light force pull the two joystick caps off of the controller.

To reassemble your device, follow these instructions in reverse order.