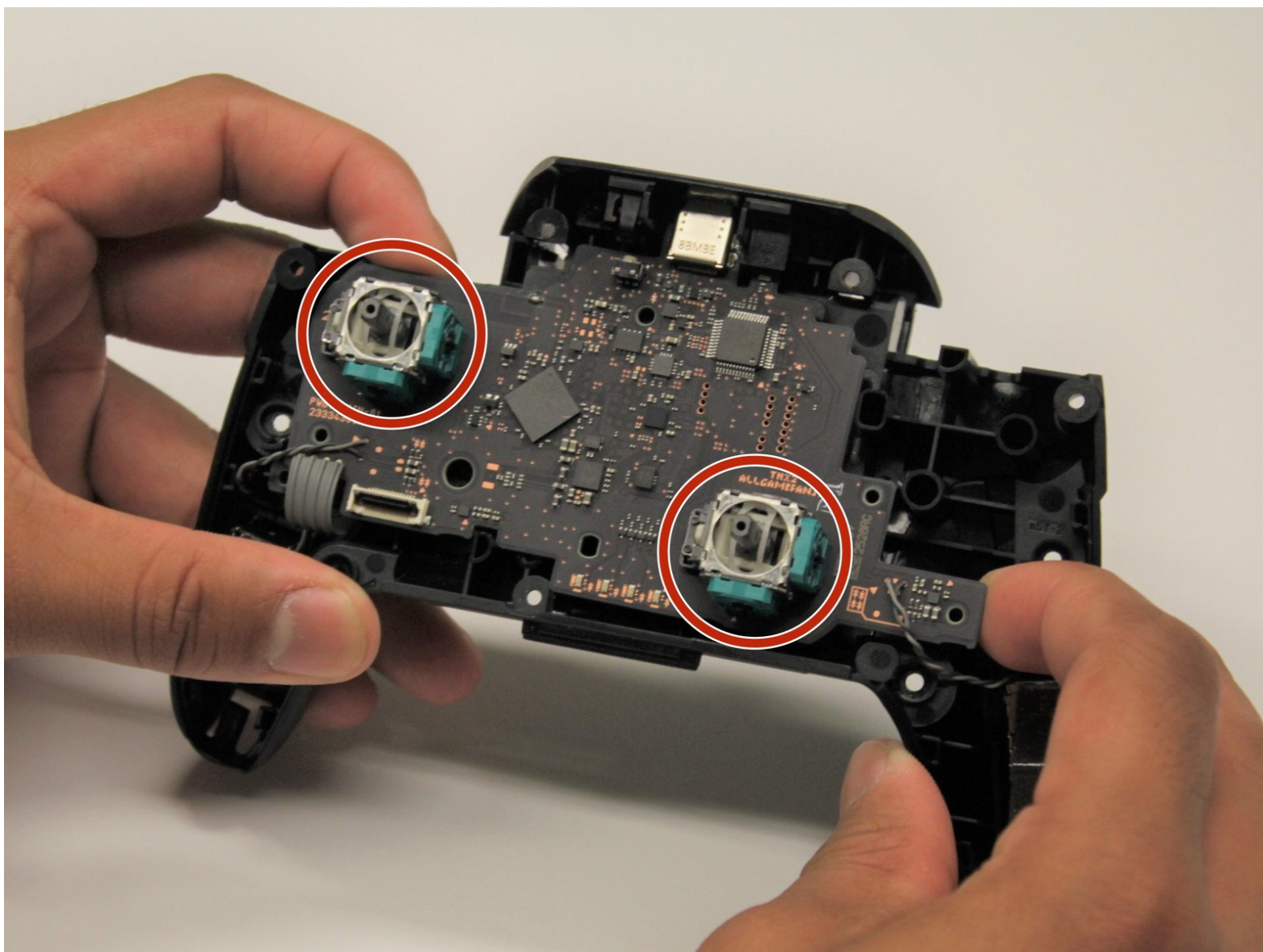




Nintendo Switch Pro Controller Joystick Module Replacement

This guide will walk you through how to remove and replace your faulty Nintendo Switch Pro Controller joystick modules.

Written By: Daniel Tagalog



INTRODUCTION

Use this guide to replace the joystick control modules on your Nintendo Switch Controller. To complete this project, you must be able to [solder](#). Care should be taken in the removal of the plastic body pieces and the internal circuit board of the device to avoid damage that could render the device inoperable. This project also involves the removal of a lithium-ion battery, and if swollen, [be sure to take appropriate precautions](#).



TOOLS:

- [Desoldering Braid](#) (1)
- [Solder](#) (1)
- [Soldering Iron](#) (1)
- [Phillips #00 Screwdriver](#) (1)
- [iFixit Opening Tools](#) (1)



PARTS:

- [Nintendo Switch Pro Controller Joystick](#) (1)

Step 1 — Battery



- Flip the controller over so model stickers face the ceiling.

Step 2



- Use a Phillips #00 screwdriver to remove the two black flathead 7 mm screws that secure the handles, located at the ends of the handles.

Step 3



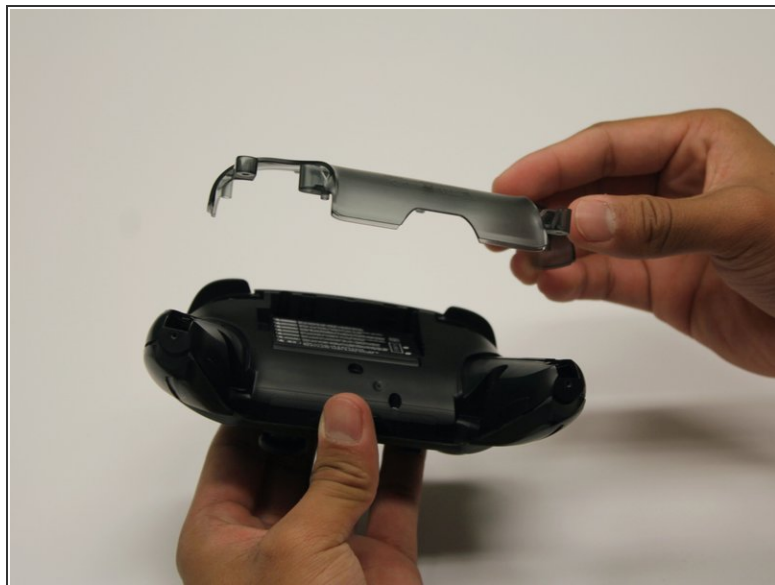
- Carefully remove the handle covers by pulling them away from the main body.

Step 4



- Use a Phillips #00 screwdriver to remove the four silver 5 mm screws that secure the clear back plastic cover.

Step 5



- Carefully pry away the clear plastic cover using your fingernail.

Step 6



- Remove the lithium-ion battery by using a fingernail or plastic opening tool to pry it up on the left side. Only a small amount of force is needed.

Step 7 — Joystick Module




- Remove the five 5mm roundhead screws with the Phillips #00 screwdriver.

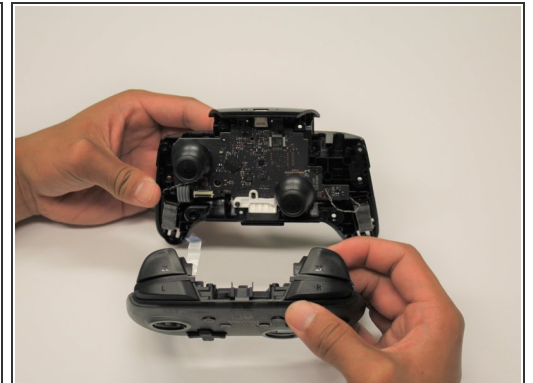
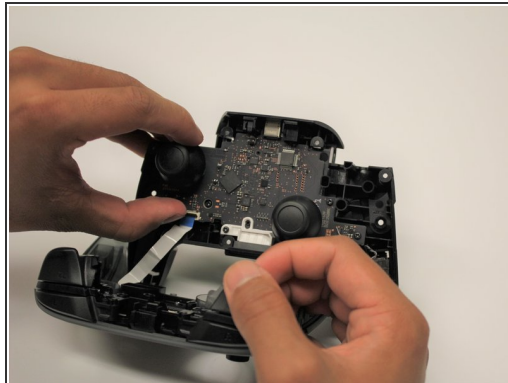
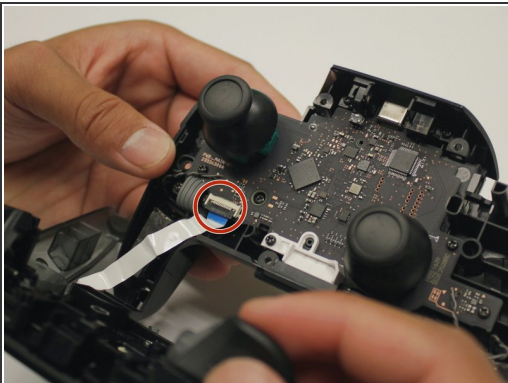
Step 8




- Carefully pry the front plate off of the body using a plastic opening tool.
- Separate the plastic covers by pulling it apart from the controller body.

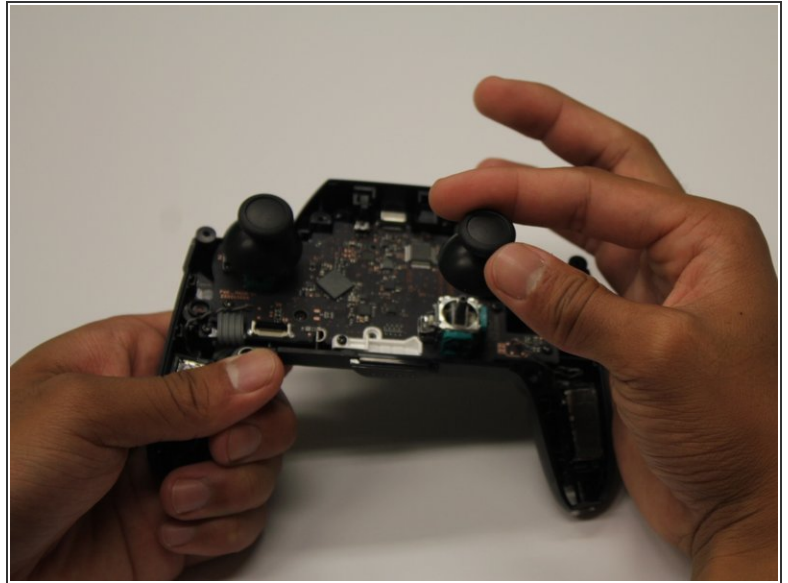
 Avoid using excessive force when pulling the cover off to prevent damage to the white ribbon cable.

Step 9



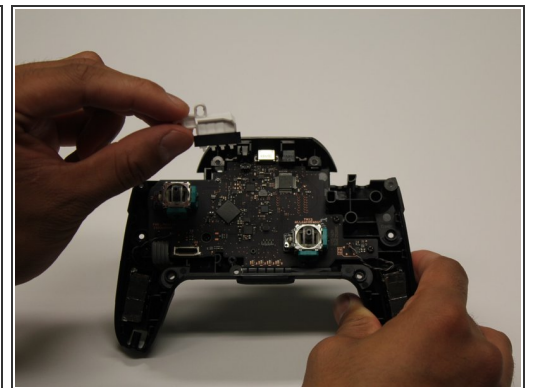
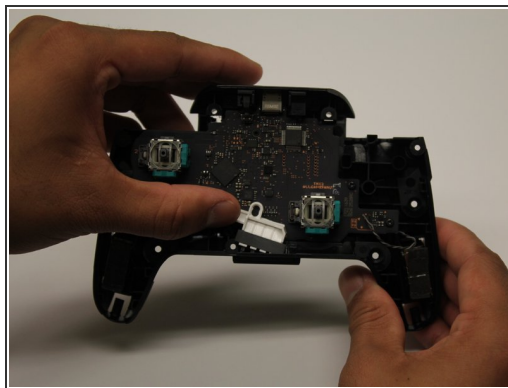
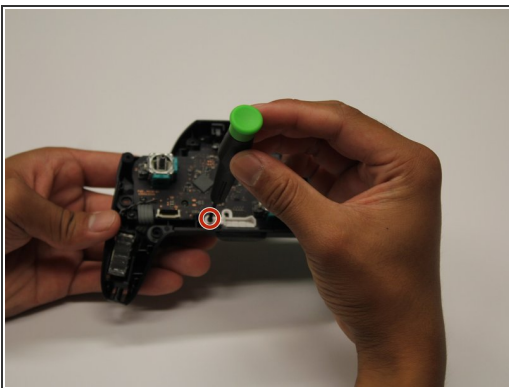
- Use an iFixit opening tool to flip up the locking tab on the ZIF connector.
- Carefully remove the ribbon cable from the connector.
-  Only a small amount of force should be needed to remove the ribbon cable.

Step 10



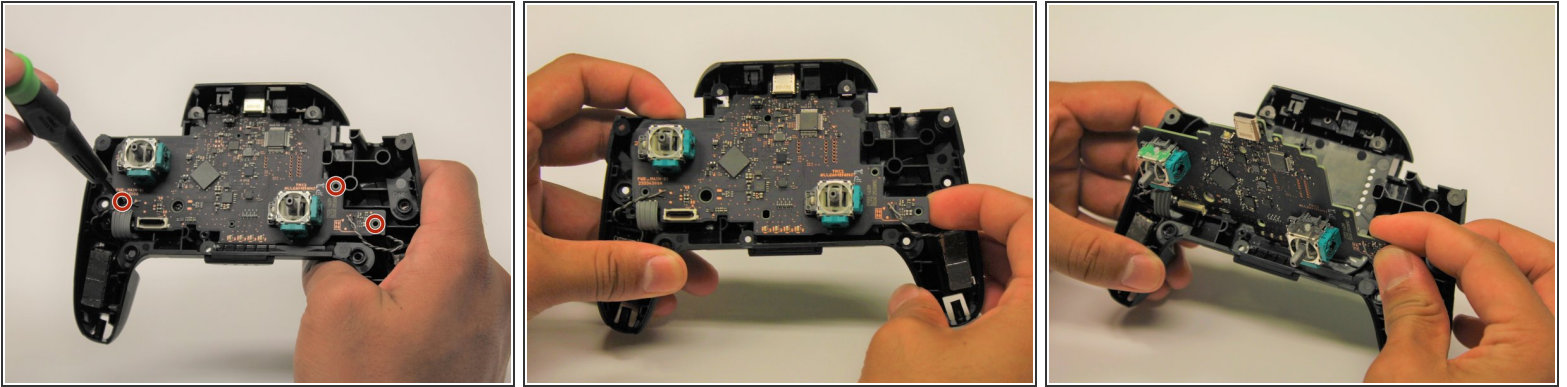
- With light force pull the two joystick caps off of the controller.
- ⓘ This step is not essential but will reduce clutter for the following steps.

Step 11



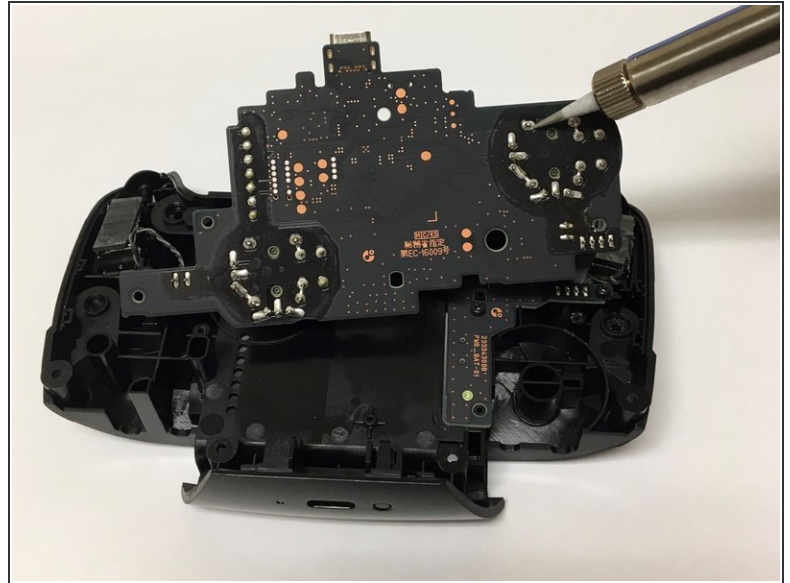
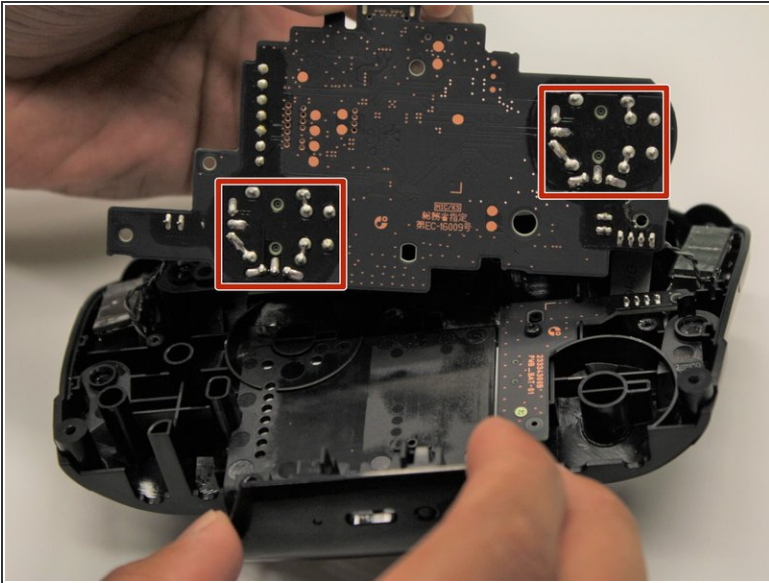
- Remove the 5mm roundhead screw with a Phillips #00 screwdriver.
- Use your fingernail to pry the LED light away from its slot.
- ⓘ Set aside the LED light with its corresponding screw for reassembly.

Step 12



- Remove the three black 5mm roundhead screws with the Phillips #00 screwdriver.
 - Loosen the circuit board off the chassis by gently pulling at the bottom right corner.
 - Lift the circuit board up to expose its backside.
- ⚠ Avoid using too much force when lifting the circuit board to prevent damaging the wires.

Step 13



- Turn to the backside of the circuit board for clear access to the solder joints.
- Desolder all of the outlined solder joints.
- Remove the joystick module from the circuit board.
- ⓘ Refer to the following solder guide if necessary: [How To Solder and Desolder Connections](#)

To reassemble your device, follow these instructions in reverse order.