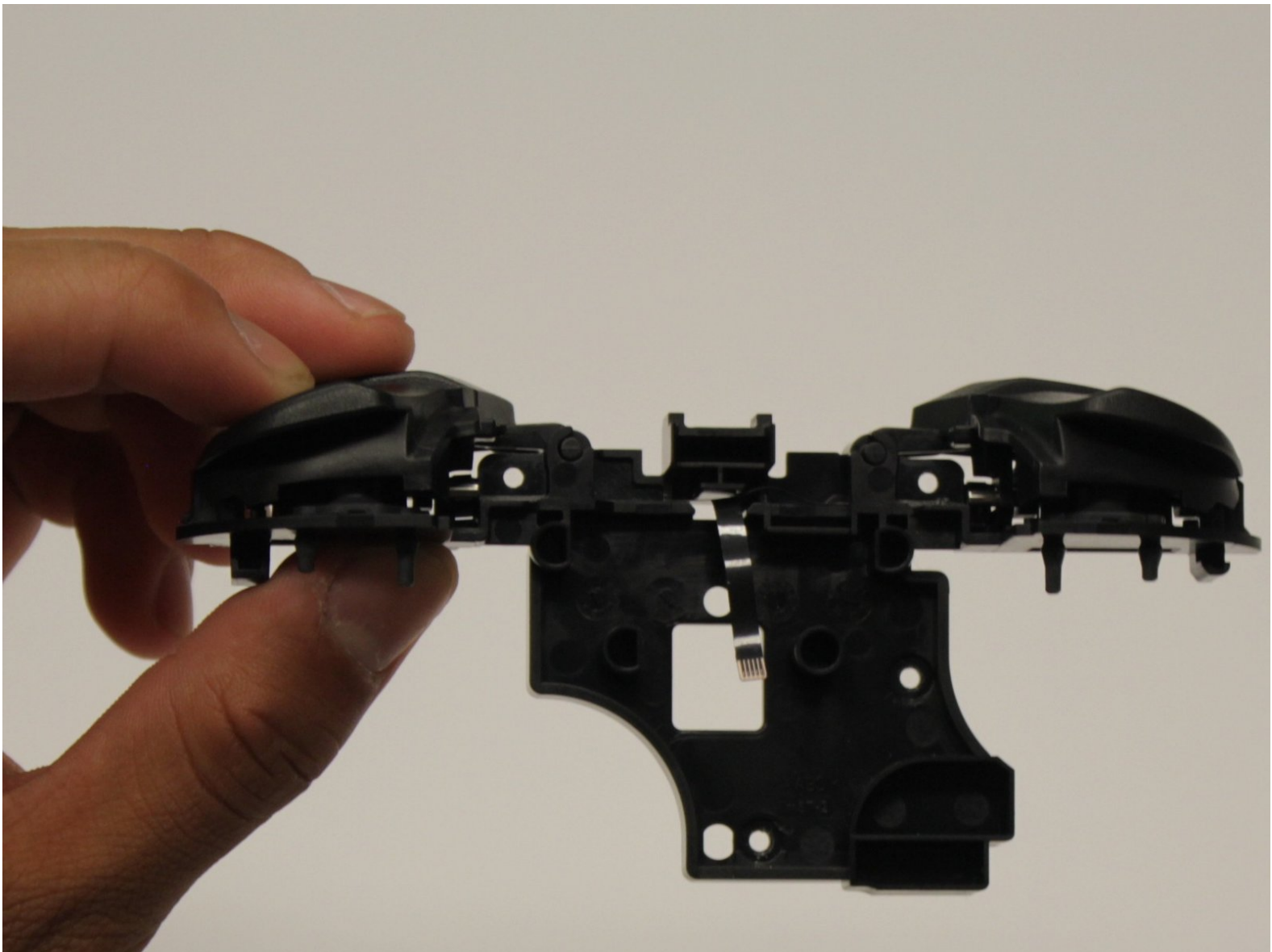




# Nintendo Switch Pro Controller Trigger Button Replacement

This is a replacement guide on how to replace the trigger buttons on a Nintendo Switch Pro Controller.

Written By: Simon Lin



## INTRODUCTION

Triggers are essential for an optimum gaming experience. This guide shows how to replace broken trigger buttons on a Nintendo Switch Pro Controller. For this project, you will need a Nintendo Switch Pro Controller trigger button replacement and a Phillips 00 Screwdriver which you can get from iFixit.



### TOOLS:

- [Phillips #00 Screwdriver](#) (1)



### PARTS:

- [Nintendo Switch Pro Controller Replacement Trigger](#) (1)

## Step 1 — Battery



- Flip the controller over so model stickers face the ceiling.

## Step 2



- Use a Phillips #00 screwdriver to remove the two black flathead 7 mm screws that secure the handles, located at the ends of the handles.

### Step 3



- Carefully remove the handle covers by pulling them away from the main body.

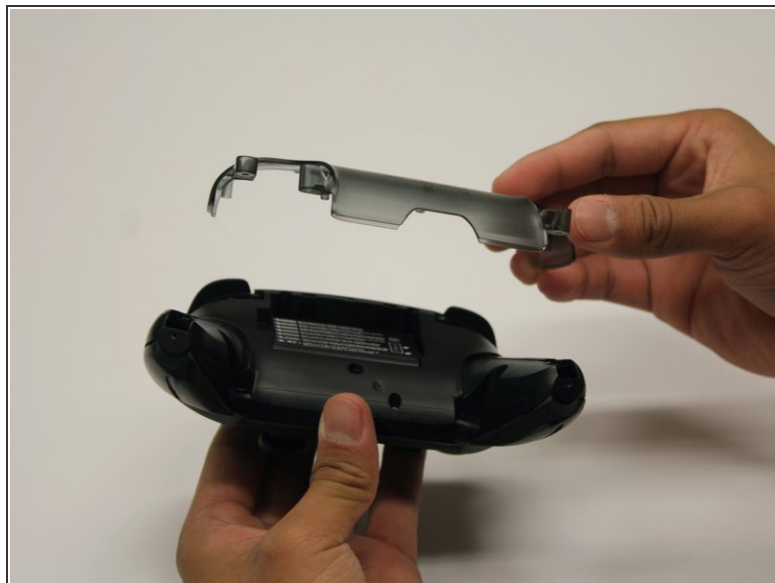
### Step 4



- Use a Phillips #00 screwdriver to remove the four silver 5 mm screws that secure the clear back plastic cover.



## Step 5



- Carefully pry away the clear plastic cover using your fingernail.

## Step 6



- Remove the lithium-ion battery by using a fingernail or plastic opening tool to pry it up on the left side. Only a small amount of force is needed.

## Step 7 — Trigger Button




- Remove the five 5mm roundhead screws with the Phillips #00 screwdriver.

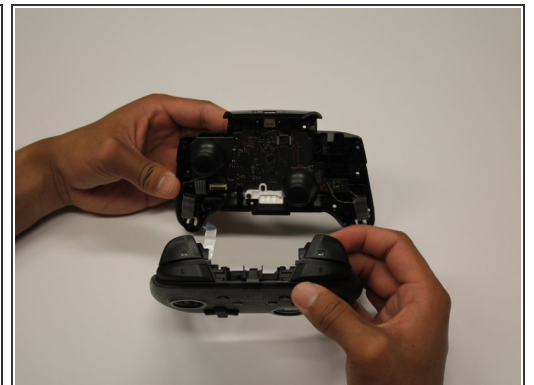
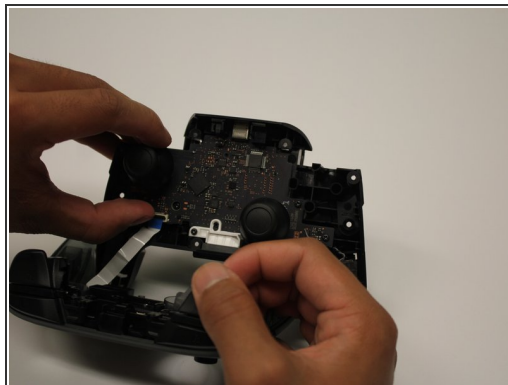
## Step 8




- Carefully pry the front plate off of the body using an iFixit opening tool.
- Separate the plastic covers by pulling it apart from the controller body.

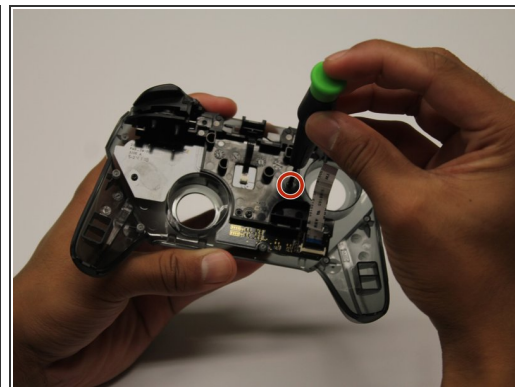
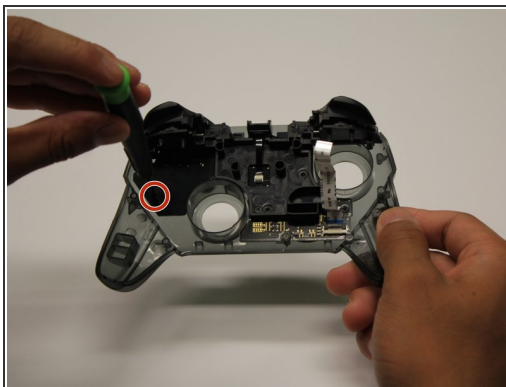
 Avoid using excessive force when pulling the cover off to prevent damage to the white ribbon cable.

## Step 9



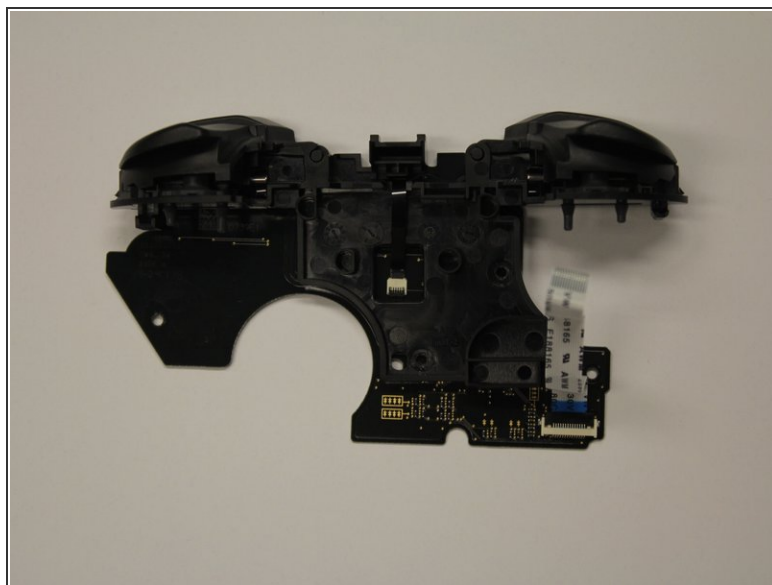
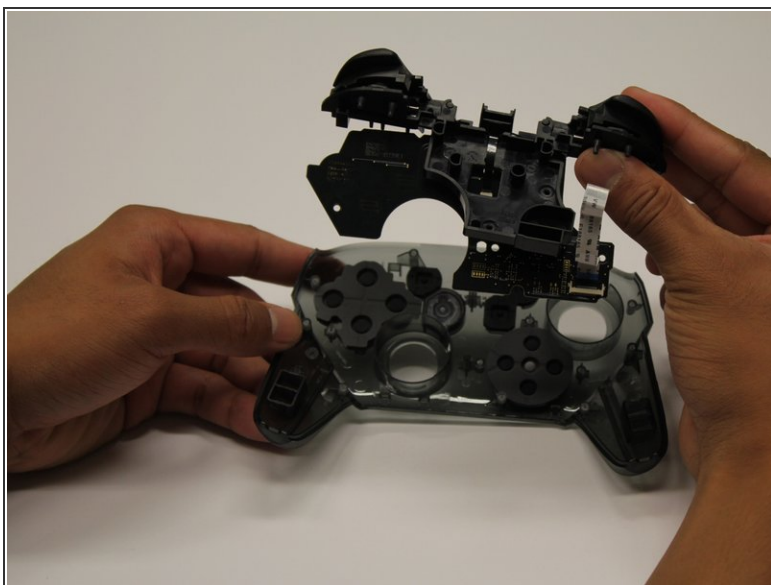
- Use an iFixit opening tool to flip up the locking tab on the ZIF connector.
  - Carefully remove the ribbon cable from the connector.
-  Only a small amount of force should be needed to remove the ribbon cable.

## Step 10



- Remove the four 5mm screws on the top circuit board using a Phillips #00 screwdriver.

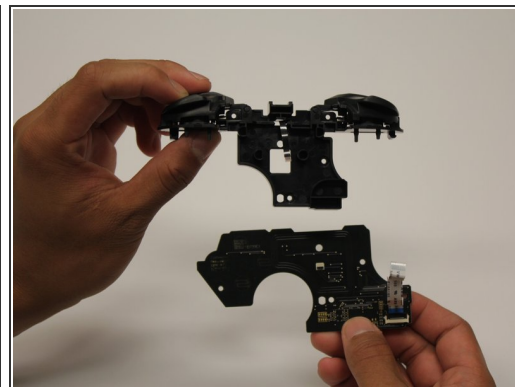
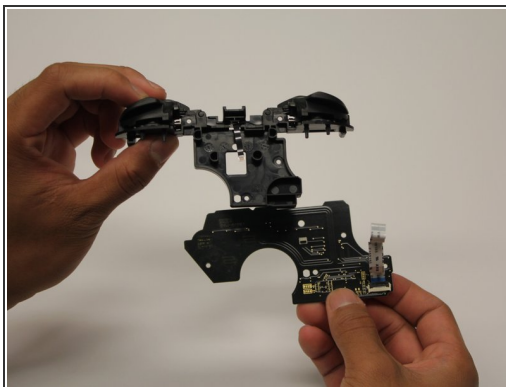
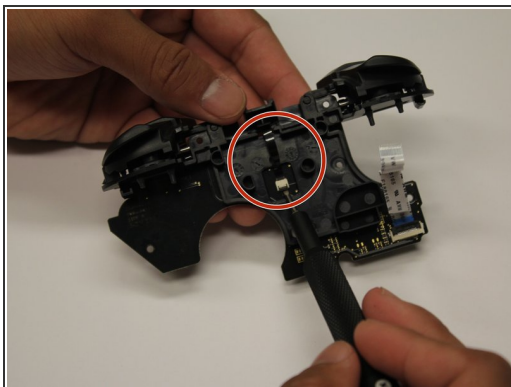
## Step 11



- Remove the top circuit board from the plastic cover.

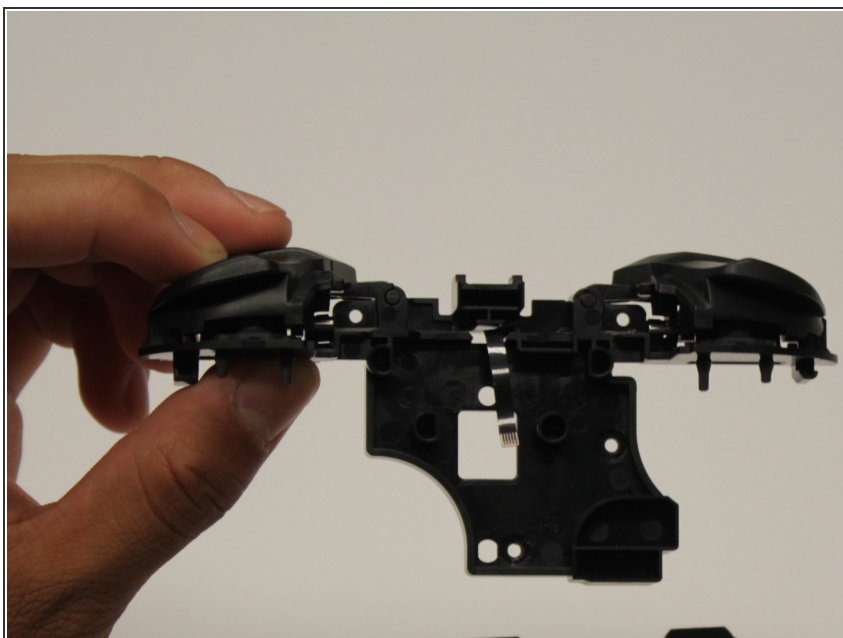


## Step 12



- Use an iFixit opening tool to flip up the locking tab on the ZIF connector.
- Remove the black ribbon cable from its connector.
- ⓘ Only a small amount of force should be needed to remove the ribbon cable.

## Step 13



- Replace the trigger button component.

To reassemble your device, follow these instructions in reverse order.