



Nintendo Switch Right Joy-Con Rail Replacement

A free guide on how to replace the right Joy-Con rail on a Nintendo Switch gaming console.

Written By: Blake Klein



INTRODUCTION

Follow this guide to replace the right Joy-Con rail in a Nintendo Switch gaming console.

Warning: the Joy-Con rail screws are torqued down and can easily strip. Make sure that you're using a JIS #0 screwdriver to remove them.



TOOLS:

- [Tri-point Y00 Screwdriver](#) (1)
- [JIS #000 Screwdriver](#) (1)
- [JIS #0 Screwdriver](#) (1)
- [Spudger](#) (1)



PARTS:

- [Nintendo Switch Right Joy-Con Sensor Rail](#) (1)

Step 1 — Rear Panel



- Remove the four 6.3 mm Tri-point Y00 screws from the rear panel.

Step 2



- Remove the single 6.1 mm Phillips #000 screw from underneath the kickstand.

Step 3



- Remove the two 2.7 mm Phillips #000 screws from the bottom of the device.

Step 4



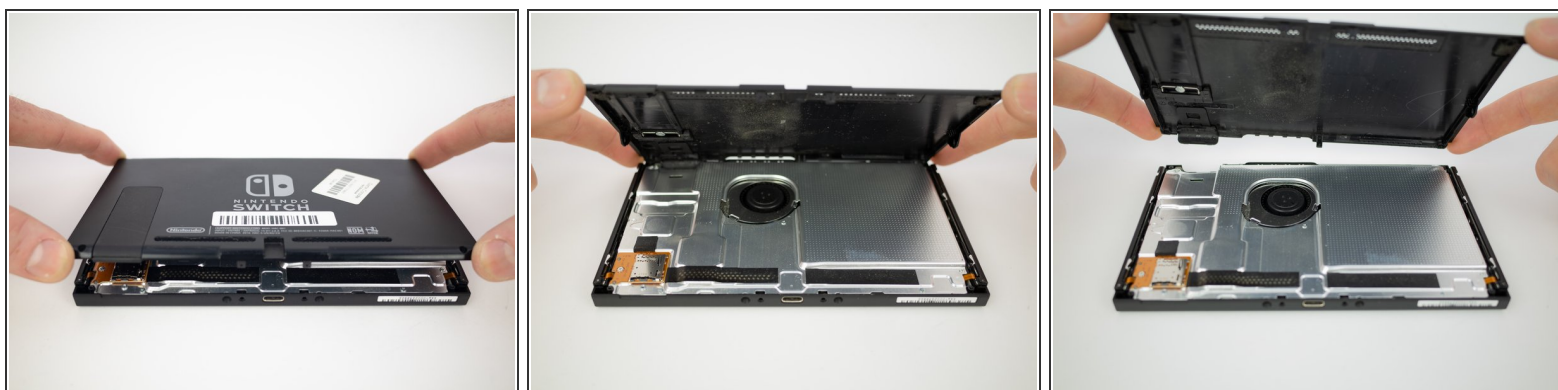
- Remove the single 2.7 mm Phillips #000 screw from the top of the device.

Step 5



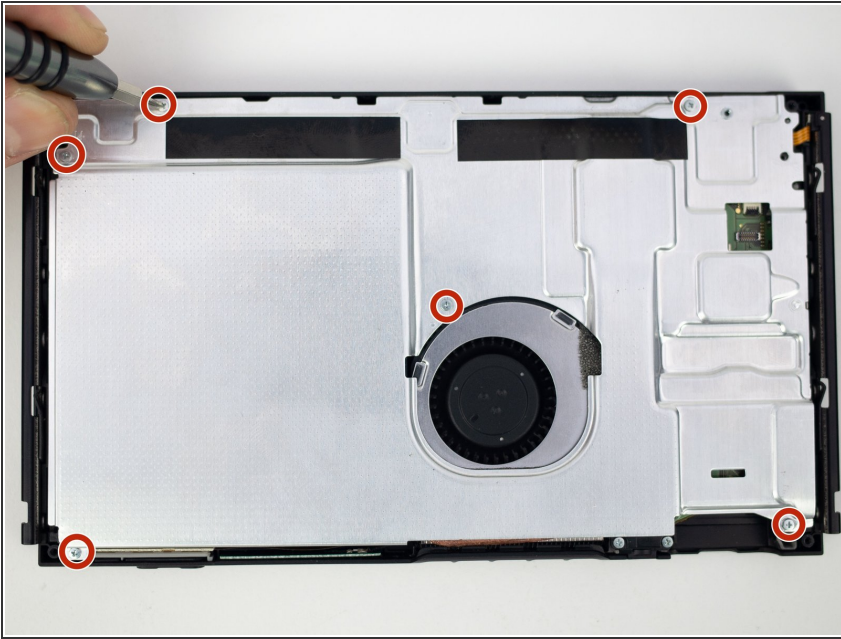
- Remove the single 3.8 mm Phillips #000 screw from the right Joy-Con rail.
- Remove the single 3.8 mm Phillips #000 screw from the left Joy-Con rail.

Step 6



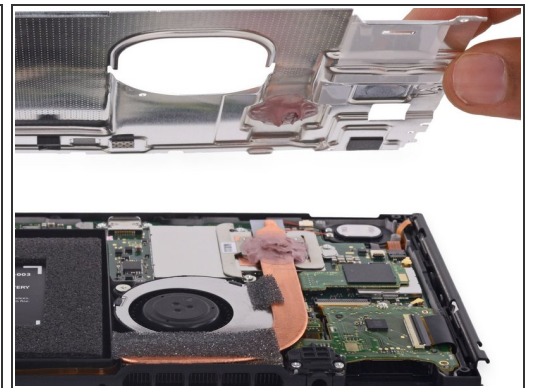
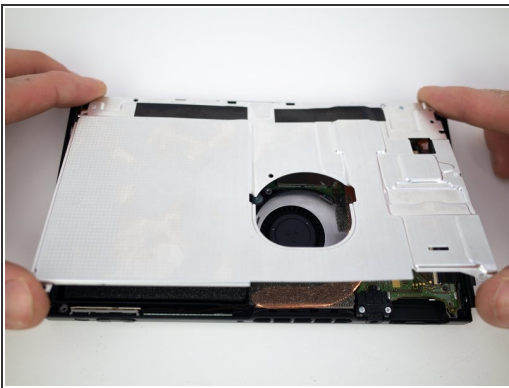
- Pull the rear panel up and off of the device.

Step 7 — Shield Plate



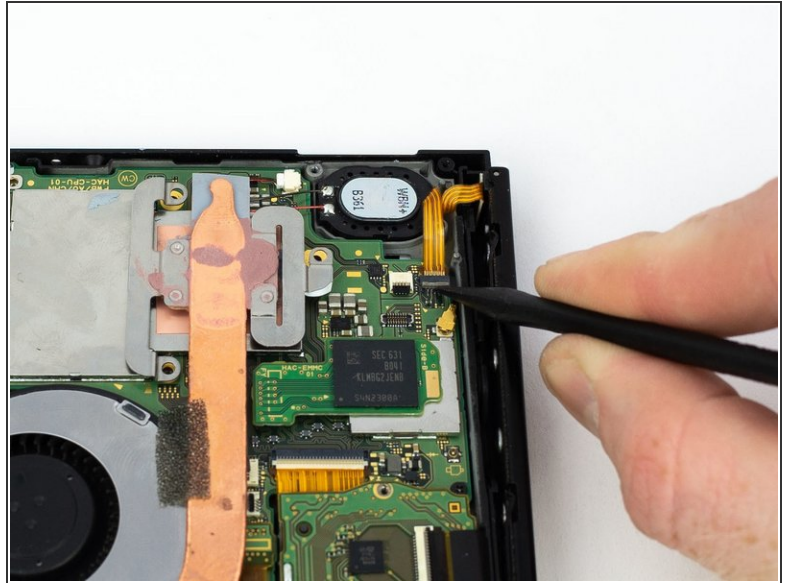
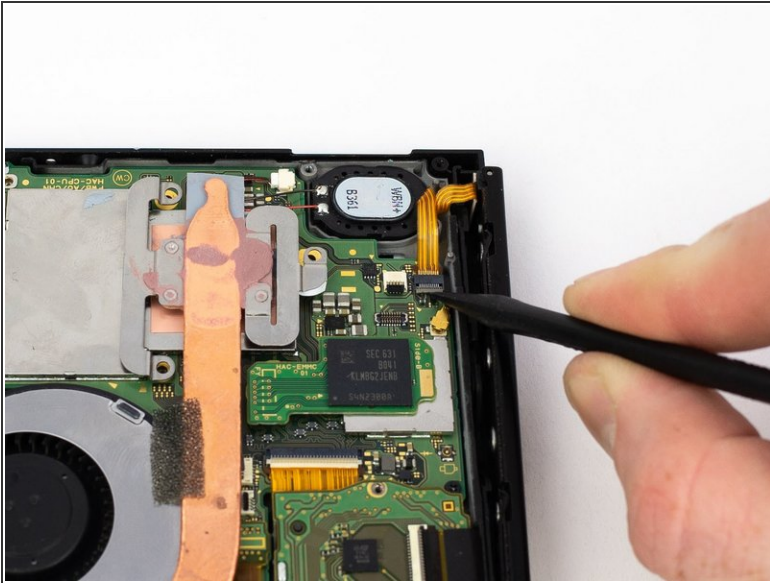
- Remove the six 3.1mm Phillips #000 screws from the shield plate.

Step 8



- Remove the shield plate from the device.
- ✦ A thick pink thermal compound bridges the gap between the shield plate and the copper heat sink underneath. For best results, whenever the shield plate is removed, refer to our [thermal paste guide](#) to remove the old thermal compound and replace it with an appropriate, thick compound such as [K5 Pro](#) during reassembly.

Step 9 — Right Joy-Con Rail



- Use a spudger to flip up the small gray locking flap on the right Joy-Con rail ribbon cable [ZIF](#) connector.

Step 10



- Remove the four 3.8mm JIS #0 screws from the right Joy-Con rail.

Step 11



- Remove the right Joy-Con rail.

To reassemble your device, follow these instructions in reverse order.