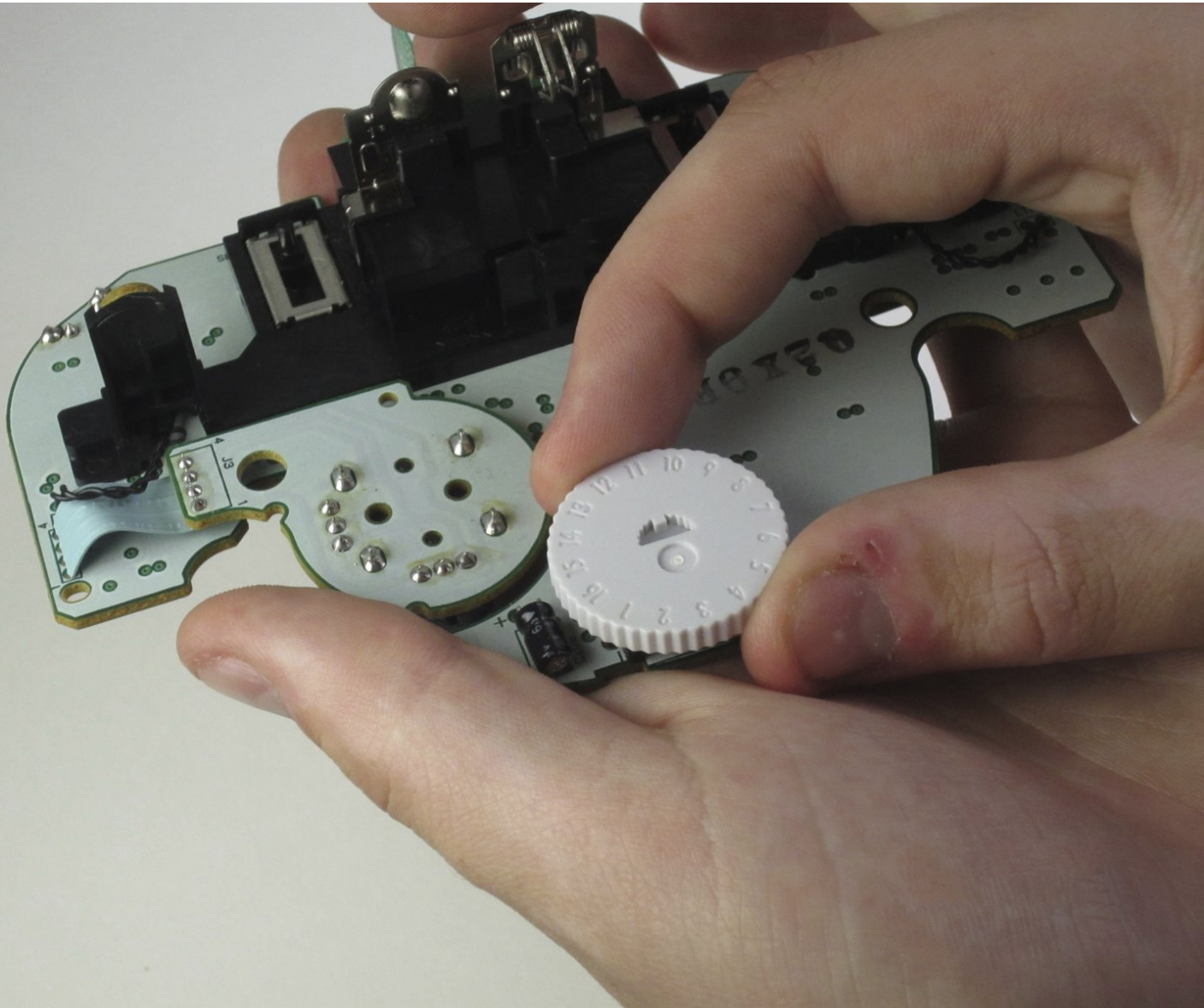




# Nintendo WaveBird Wireless Controller Channel Wheel Replacement

Remove the channel wheel from the Nintendo WaveBird Wireless Controller.

Written By: Travis Taylor



# INTRODUCTION

This guide will show you how to remove the channel wheel. If the [wheel won't turn](#), try replacing it.



## TOOLS:

- [Y1 Tri-point Screwdriver](#) (1)
  - [Tweezers](#) (1)
-

## Step 1 — Batteries



- Pull down on the battery cover release lever and pull back to remove the cover.

## Step 2



- Take out each battery then put the covering back on.

### Step 3 — Front Panel



- Remove the eight 9-mm Tri-Wing screws on the back panel with the Tri-wing Y1 screwdriver.
- ⓘ During reassembly, firmly hold the panels of the controller together while replacing screws so the panels don't separate.



## Step 4





- After each screws has been removed carefully turn over the controller, and place on a flat surface.
- Slowly separate the top panel from the bottom panel.
- ✦ The buttons are loose and may fall off of the motherboard.
- Once seperarted set aside the top panel.
- ⓘ During reassembly, make sure the front panel lines up with the buttons so they slide back into place.

## Step 5 — Buttons



- Use tweezers to remove the buttons.

 It may be easier to remove the A button off of the pad by lifting it with your fingers.

 During reassembly, make sure all buttons are in their respective sockets so they match up with the front panel.

## Step 6 — Motherboard



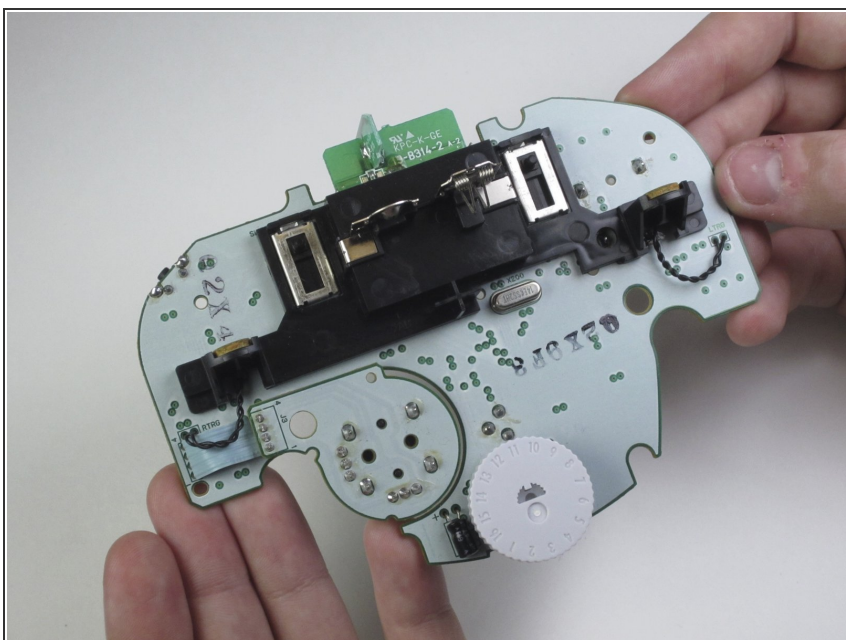
- Using tweezers remove the three grey button pads from the motherboard.

## Step 7



- With your fingers gently grip the motherboard on both sides and lift it away from the back panel.
- ❗ To put the motherboard back into place, align the two metal clips under the motherboard with the slots in the back panel. The motherboard should fall into place.

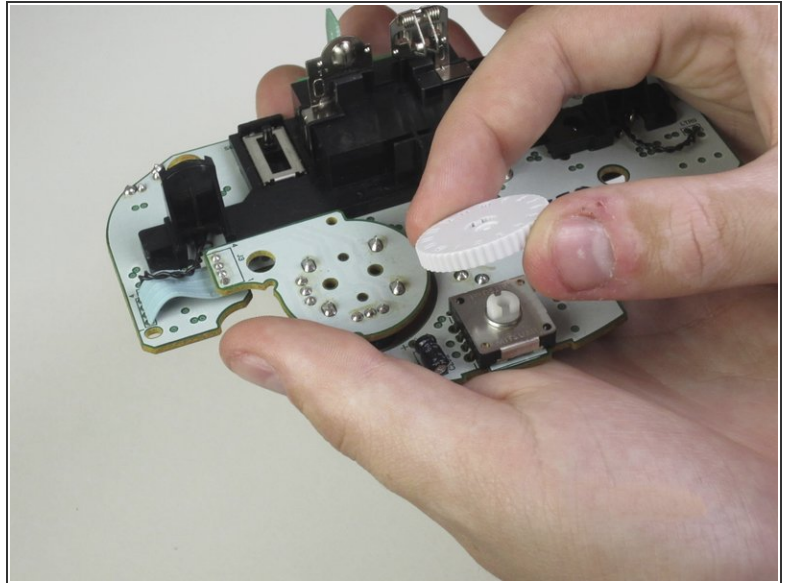
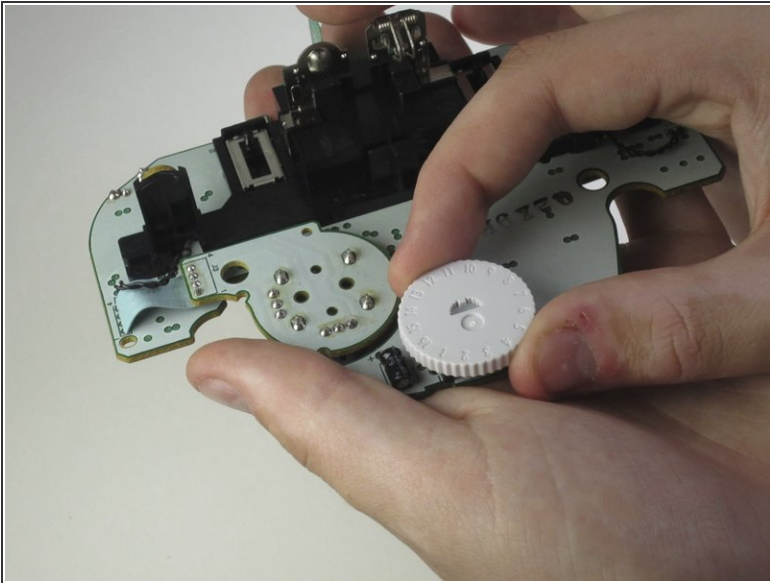
## Step 8 — Channel Wheel



- Turn the motherboard over so the channel wheel is facing up.



## Step 9



- Pinch the wheel and pull it away from the motherboard.

To reassemble your device, follow these instructions in reverse order.