



# Nintendo WaveBird Wireless Controller Joystick Replacement

Remove the joystick from the Nintendo WaveBird Wireless Controller.

Written By: Garrett Leung



---

## INTRODUCTION

This guide will show you the steps on installing the joystick. This will be helpful if the [joystick isn't working](#) properly.

---



### TOOLS:

- [Y1 Tri-point Screwdriver](#) (1)
  - [Tweezers](#) (1)
-

## Step 1 — Batteries



- Pull down on the battery cover release lever and pull back to remove the cover.

## Step 2



- Take out each battery then put the covering back on.

## Step 3 — Front Panel



- Remove the eight 9-mm Tri-Wing screws on the back panel with the Tri-wing Y1 screwdriver.
- ⓘ During reassembly, firmly hold the panels of the controller together while replacing screws so the panels don't separate.

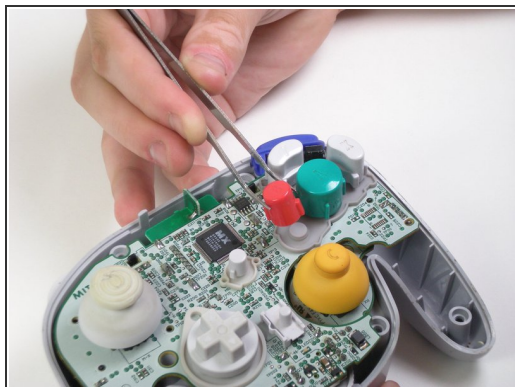


## Step 4





- After each screws has been removed carefully turn over the controller, and place on a flat surface.
- Slowly separate the top panel from the bottom panel.
- ✦ The buttons are loose and may fall off of the motherboard.
- Once seperarted set aside the top panel.
- ⓘ During reassembly, make sure the front panel lines up with the buttons so they slide back into place.

## Step 5 — Buttons



- Use tweezers to remove the buttons.

 It may be easier to remove the A button off of the pad by lifting it with your fingers.

 During reassembly, make sure all buttons are in their respective sockets so they match up with the front panel.

## Step 6 — Joystick



- Grab the base of the grey joystick cover with one hand and firmly hold down the rest of the controller with the other hand.
- Pull off the grey joystick cover.
- ☑ During reassembly, make sure the slots inside the joystick cover line up with the motherboard so it can fit back together.

To reassemble your device, follow these instructions in reverse order.