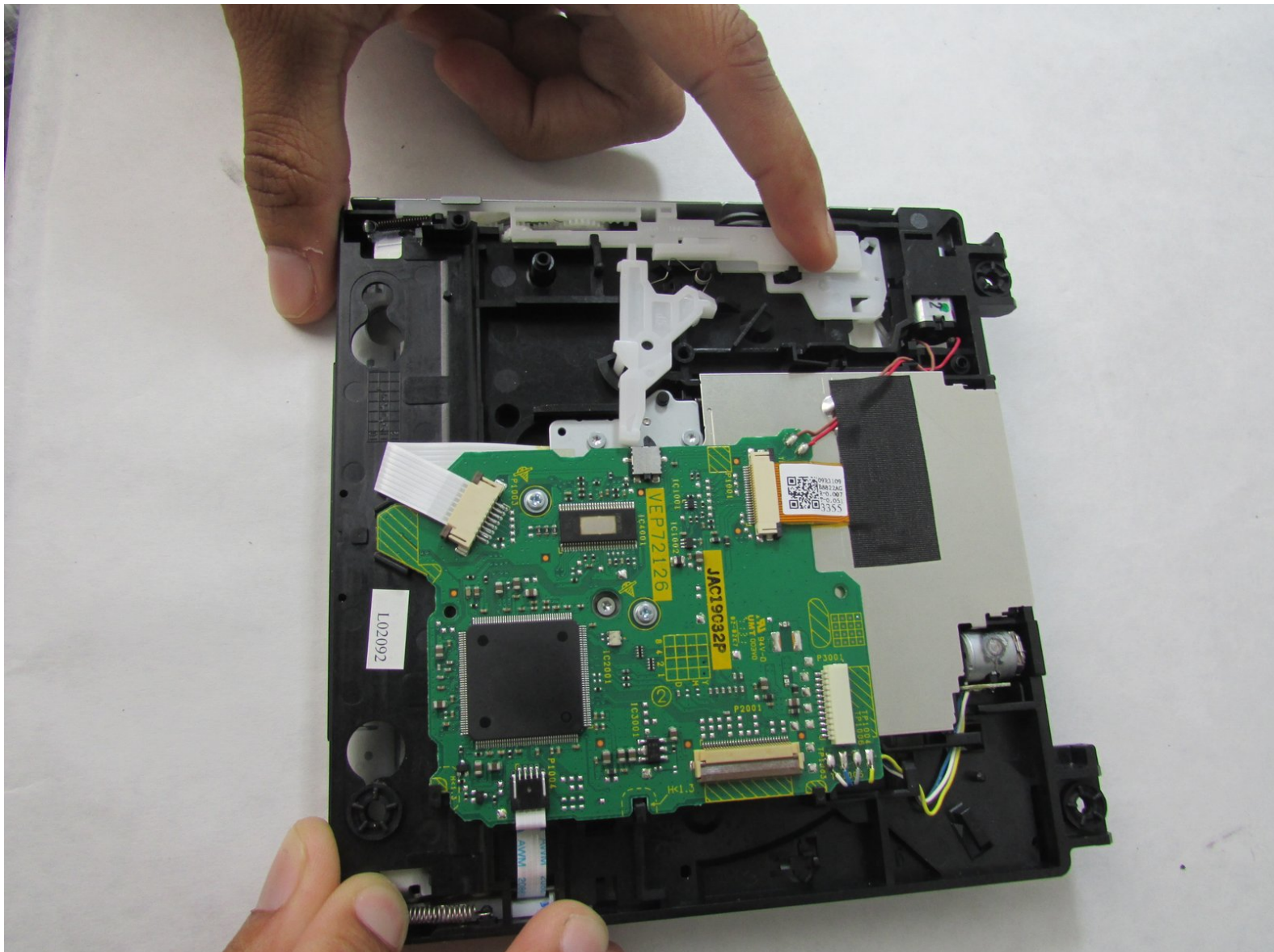




# Nintendo Wii 2011 DVD Reader Data Cable Replacement

How to replace the DVD reader data cable in your 2011 Nintendo Wii.

Written By: Chris Halprin



# INTRODUCTION

This Guide will help you take apart the Wii DVD drive and replace the DVD reader data cable.



## TOOLS:

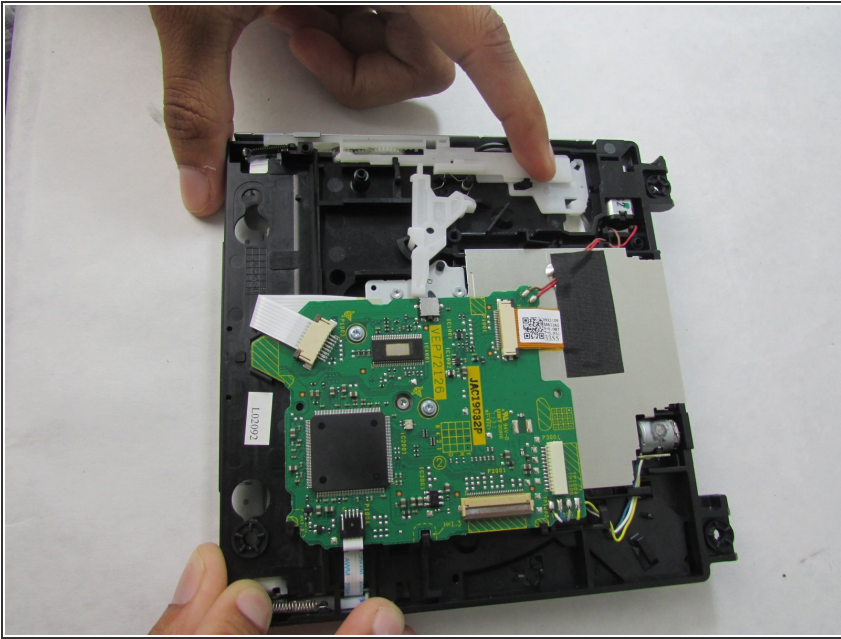
- [Phillips #0 Screwdriver](#) (1)
- [Tweezers](#) (1)
- [Angle-head Needle Nose](#)
- [Phillips #1 Screwdriver](#) (1)



## PARTS:

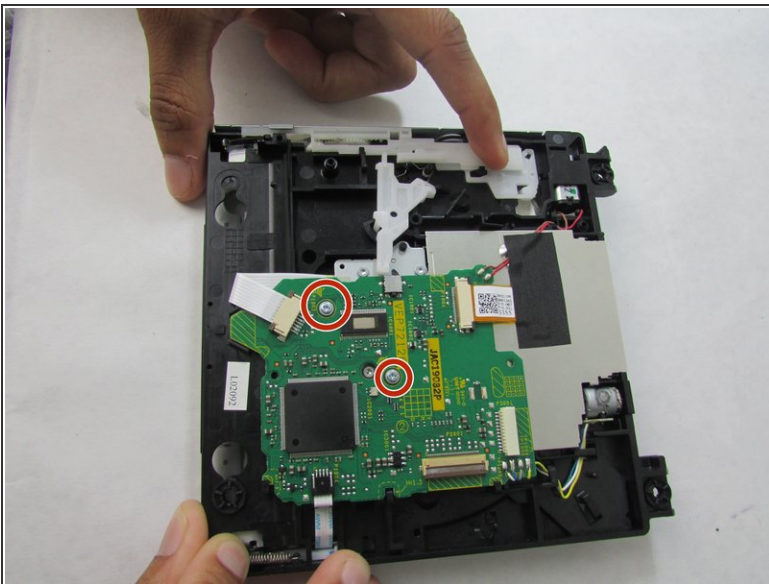
- [Nintendo Wii DVD Drive Lens](#) (1)

## Step 1 — DVD Reader Data Cable



- Follow [Nintendo Wii 2011 Outer Case Removal/Disassembly](#) up to step 14.
- Begin this guide after you take the DVD drive from the motherboard in step 13.

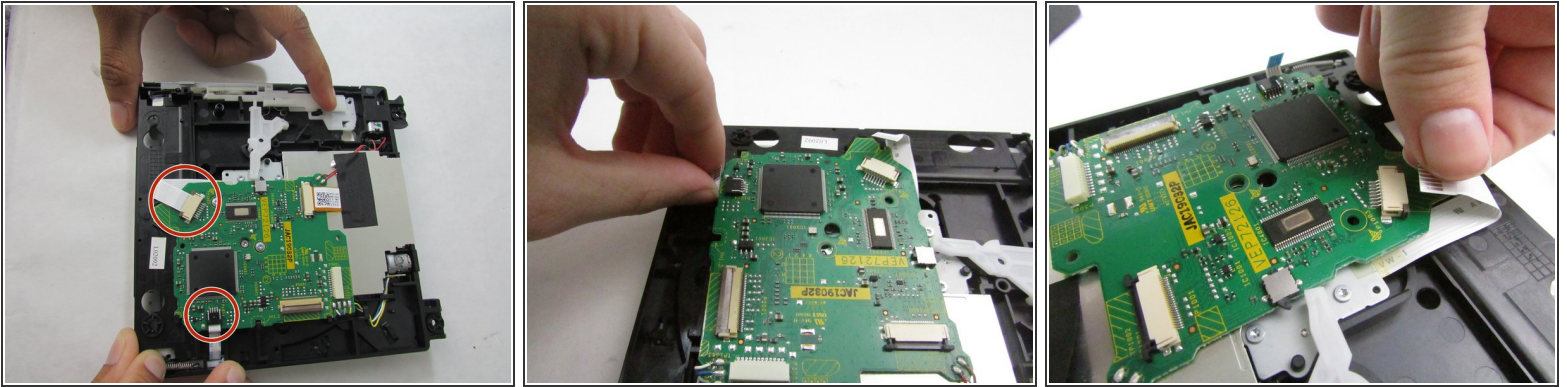
## Step 2



- Use the Philips screw driver to remove 2 3mm Philips screws and then take off the disc drive board.

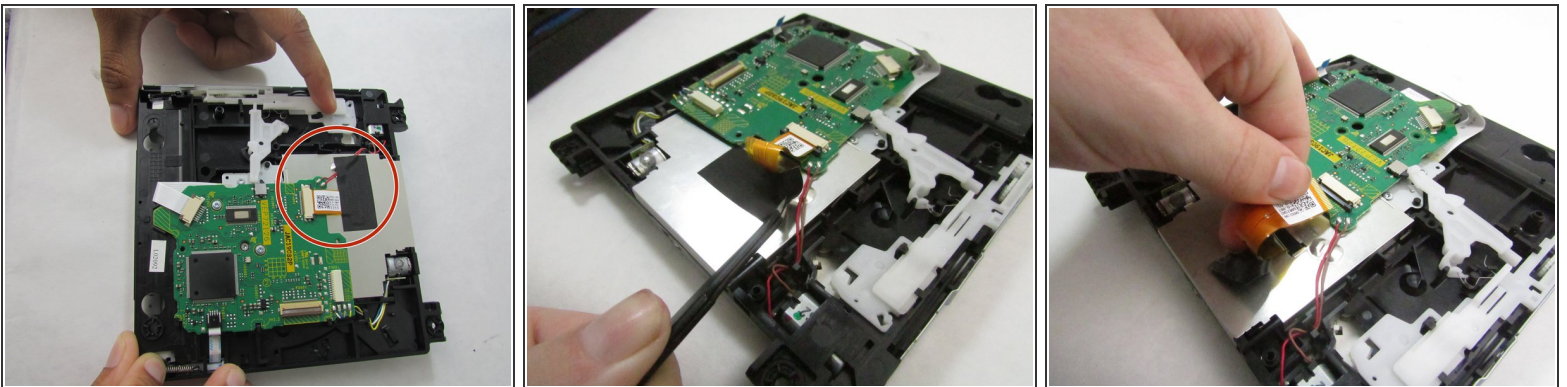


### Step 3



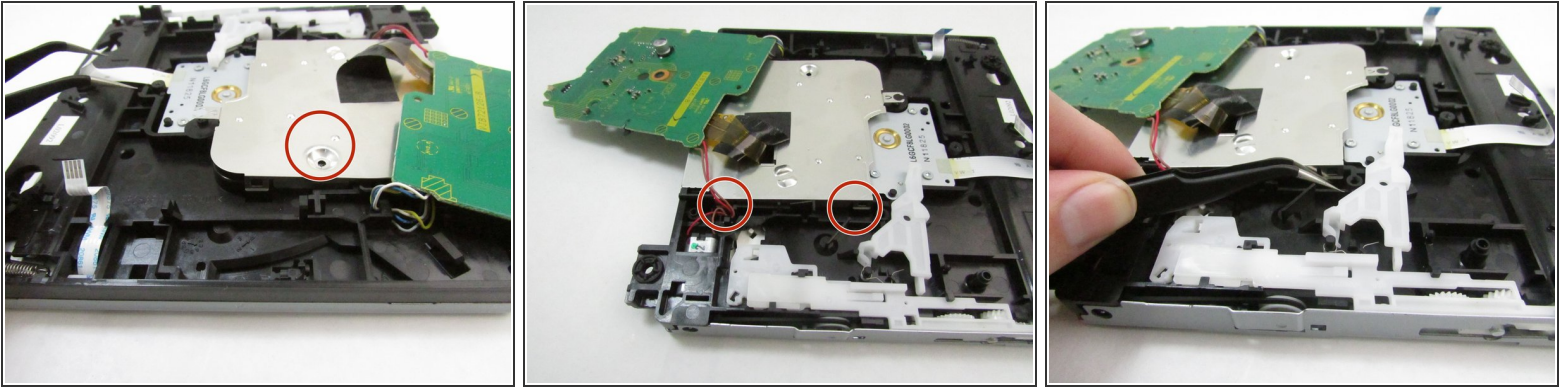
- After you take out the screws unplug the 2 cables from the left side of the board.
- Pinch the cable with your thumb and index finger and pull each cable straight out from the plug in port.

### Step 4



- Next we will remove the cable on the right side of the board.
- Use tweezers to remove the sticker holding the cables down.
- After you remove the sticker pinch the cable with your thumb and index finger and pull straight out.

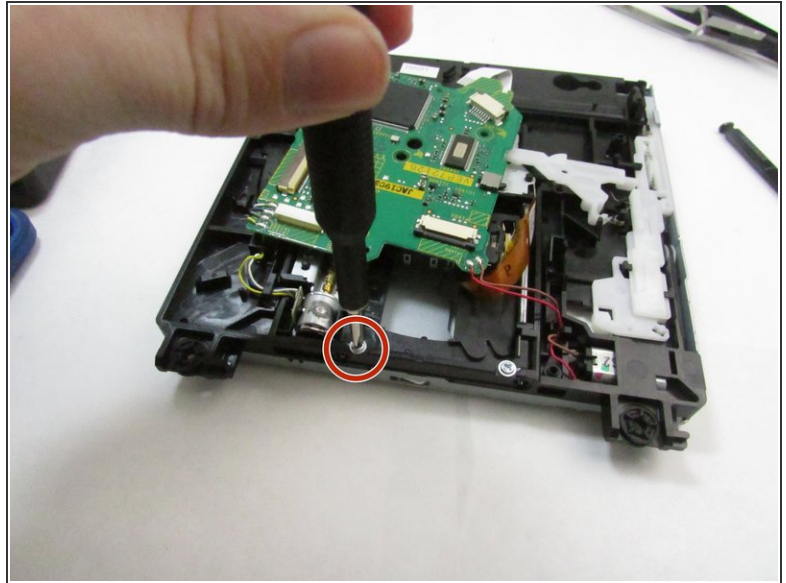
## Step 5



- After you remove the board you will discover a metal plate.
- There will be one screw and four clips holding the plate in place.
- Use the tweezers to pry up each of the four clips on both sides of the metal plate.
- Slide and lift the metal plate simultaneously toward the end of the DVD disc drive where the board is located.

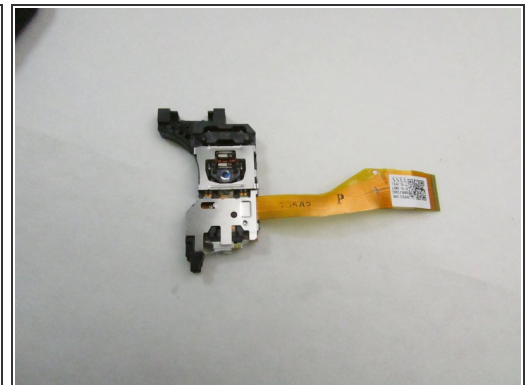
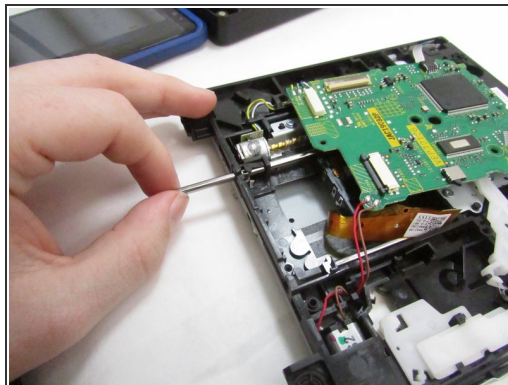
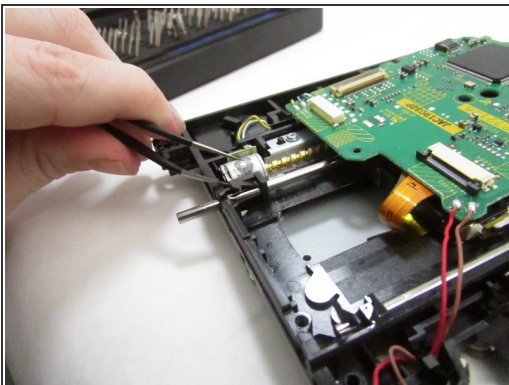


## Step 6



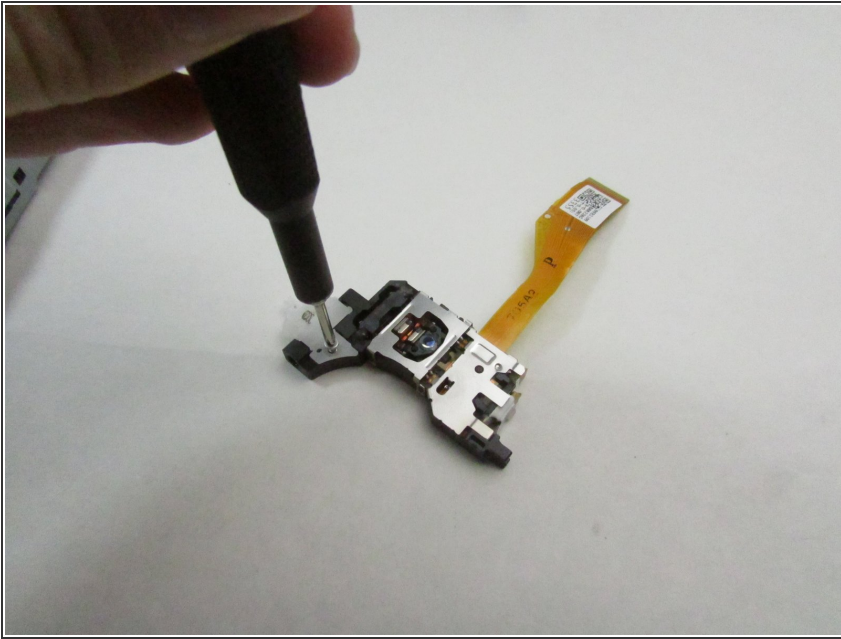
- After you remove the metal plate you will find the optical drive.
- To remove the optical drive use a Philips screwdriver to unscrew the left screw holding down a plastic piece along with a metal shaft in place.

## Step 7



- Once you remove the screw holding the plastic piece and the metal shaft. Use the tweezers to lift up the plastic piece.
- Once the plastic piece is lifted up use your fingers to pull out the metal shaft.
- When the shaft is fully out the Optical drive will be loose and you will be able to lift the optical drive from the Disc drive.

## Step 8



- Remove the Phillips screw that secures the white plastic bracket to the lens assembly.
- Lift the bracket off the lens assembly.
- If you are going to install a new lens, make sure to transfer the white plastic bracket and screw to the new laser lens before installation.

To reassemble your device, follow these instructions in reverse order.