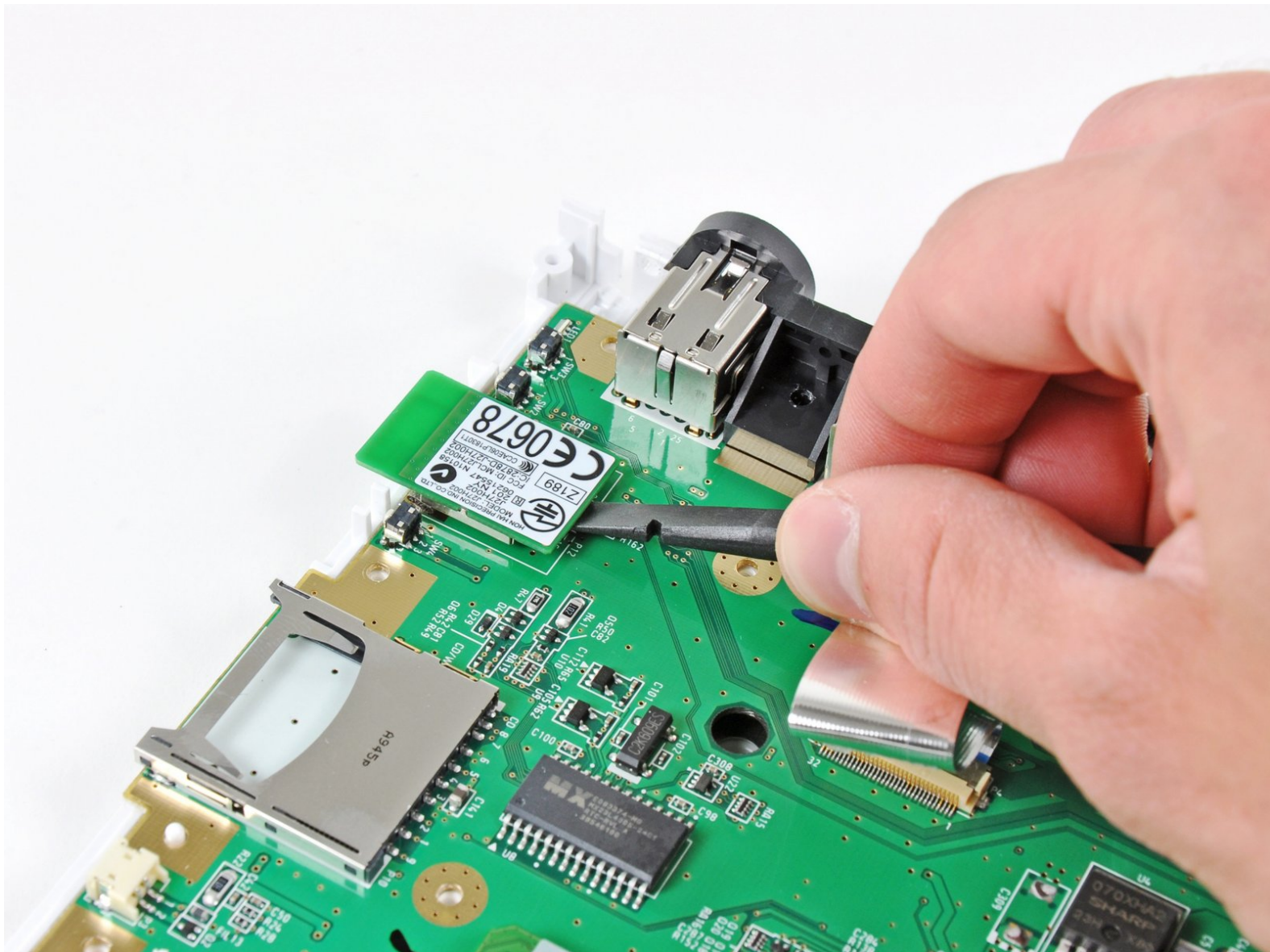




# Nintendo Wii Bluetooth Board Replacement

Replace the Bluetooth board on your Wii.

Written By: Andrew Bookholt



# INTRODUCTION

Use this guide to replace your Wii's Bluetooth board. Replacing the Bluetooth board requires removal of most components inside the Wii.



## TOOLS:

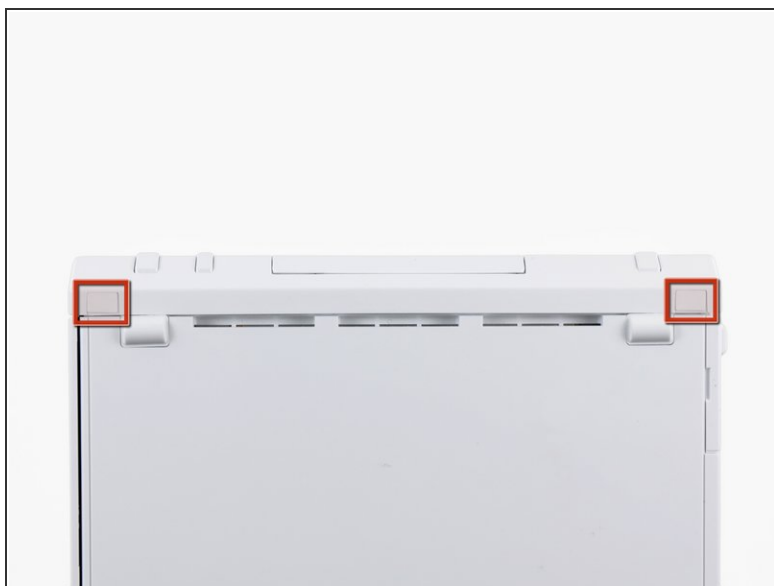
- [Metal Spudger](#) (1)
- [Phillips #00 Screwdriver](#) (1)
- [Spudger](#) (1)
- [Tri-wing Screwdriver](#) (1)
- [Tweezers](#) (1)



## PARTS:

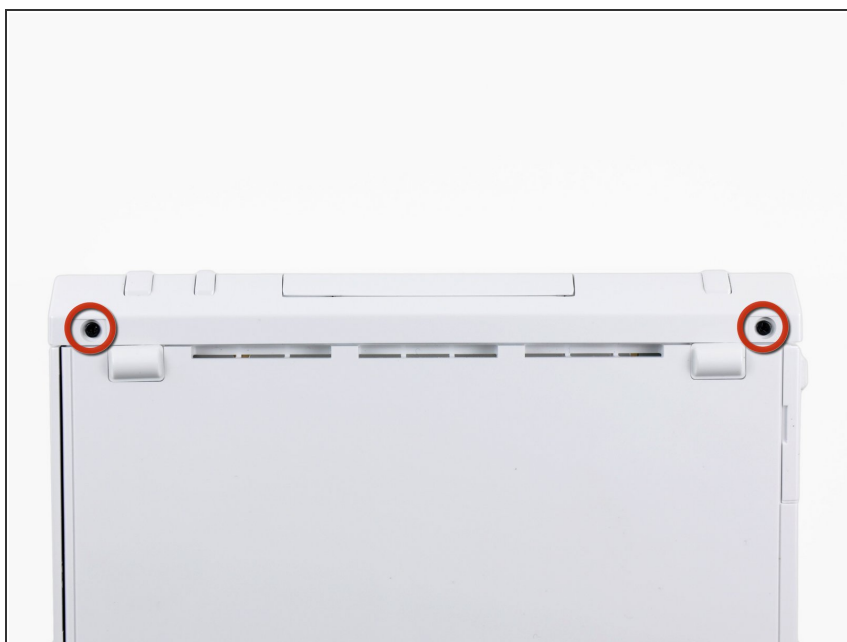
- [Nintendo Wii Bluetooth Board](#) (1)

## Step 1 — Faceplate



- Use a metal spudger to remove the white plastic screw covers stuck to the lower case near the front of the Wii.

## Step 2



- Remove the two 8.3 mm Tri-Wing screws hidden under the covers you just removed.

### Step 3



- Remove the single 5.9 mm Phillips screw under the controller port door nearest the faceplate.

### Step 4



- Use a metal spudger to remove the rubber foot stuck to the side of the Wii near the DVD drive opening.

## Step 5



- Remove the single 5.9 mm Phillips screw hidden under the foot you just removed.

## Step 6



- Carefully pull the faceplate away from the front of the Wii.
- Use a pair of tweezers to disconnect the LED cable's plastic connector from the motherboard.
- Remove the faceplate.



## Step 7 — Outer Case



- Open the controller port cover until it is perpendicular to the black controller port bezel.
- Pull the controller port cover straight up to release it from the outer case.
- ⓘ Repeat this procedure for the memory card port cover.

## Step 8



- Remove the two remaining 4.1 mm Phillips screws along the top edge of the black plastic controller port bezel.
- Lift the bezel from the long edge furthest away from the controller ports and remove it from the Wii.

## Step 9



- Remove the two 5 mm Phillips screws above the controller ports.

## Step 10



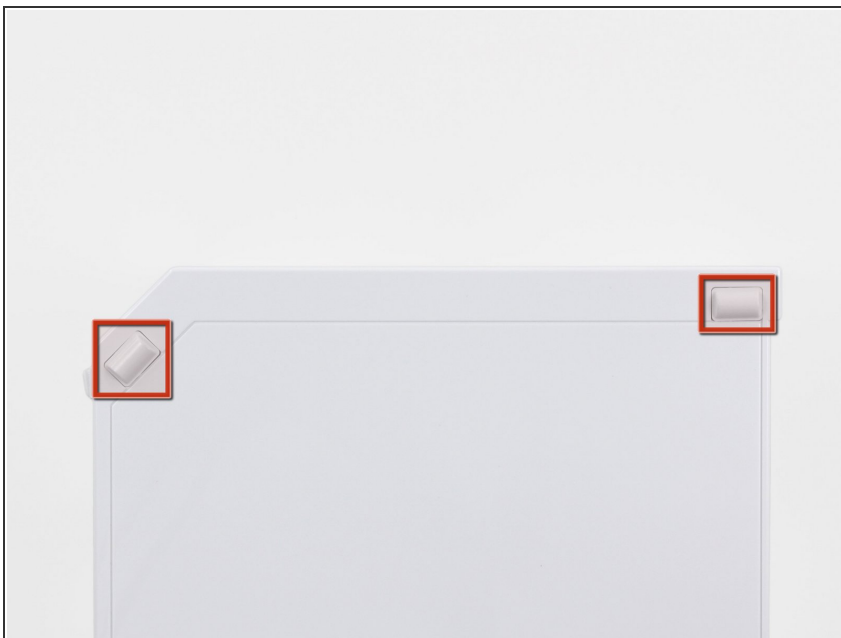
- Use a metal spudger to remove the three highlighted screw covers stuck to the side of the Wii.

## Step 11



- Remove the following screws:
  - Two 5 mm Phillips screws
  - One 8.2 mm Tri-Wing screw

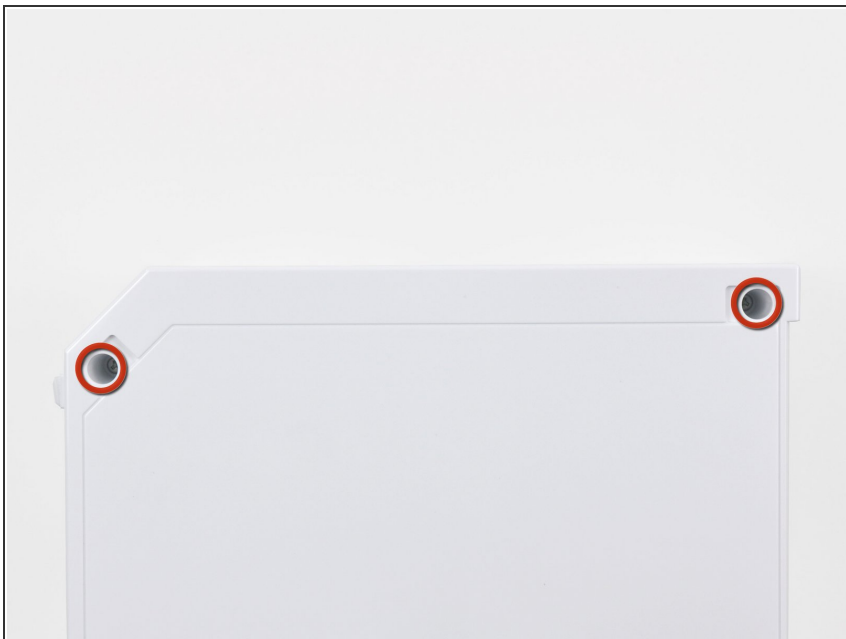
## Step 12



- Use a metal spudger to remove the two rubber feet stuck to the bottom face of the Wii near the rear ports.



## Step 13



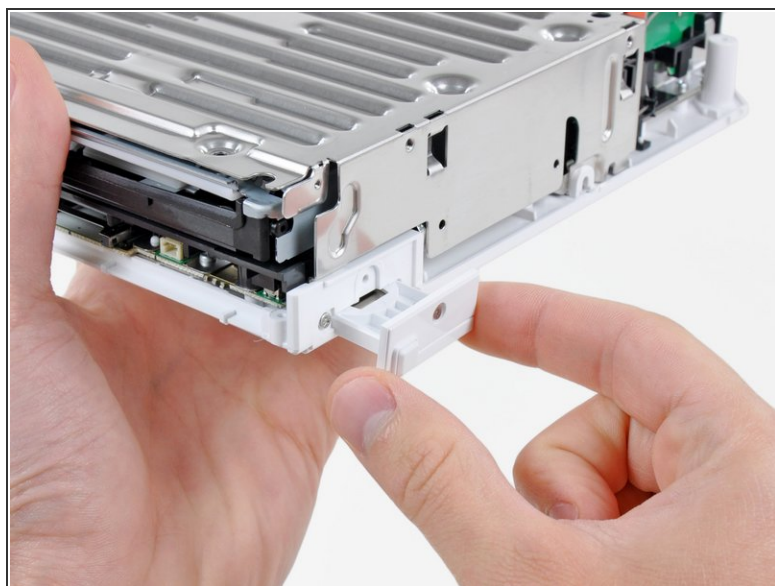
- Remove the two 8.2 mm Tri-Wing screws hidden under the feet you just removed.

## Step 14



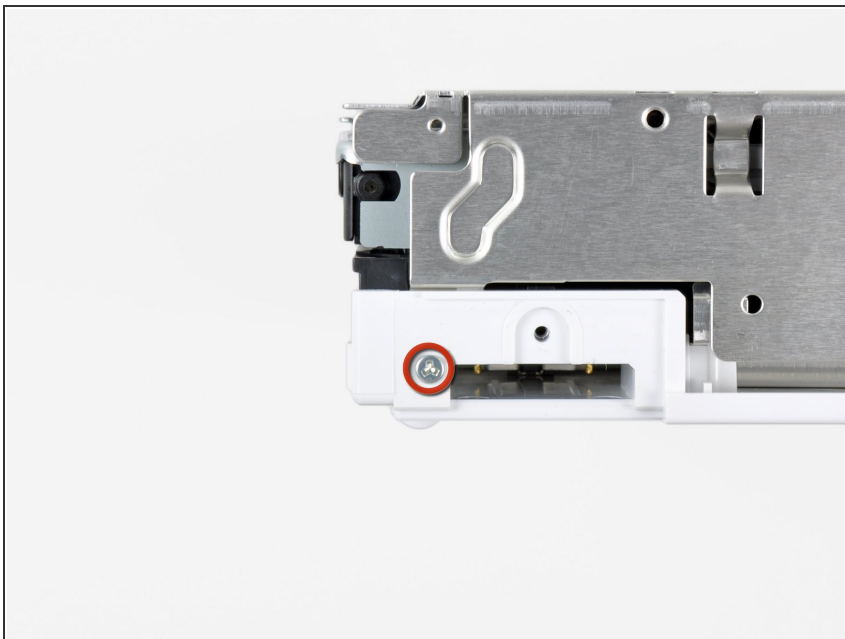
- Lift the outer case straight up off the body of the Wii.

## Step 15 — DVD Drive



- Remove the small Phillips screw securing the battery door to the bottom panel.
- ⓘ This screw is captive to the battery door.
- Pull the battery door out of the Wii.
- ⓘ This is a good time to change the CR2032 battery if it hasn't been changed recently.

## Step 16



- Remove the 8.2 mm Tri-Wing screw that was hidden beneath the battery door.

## Step 17



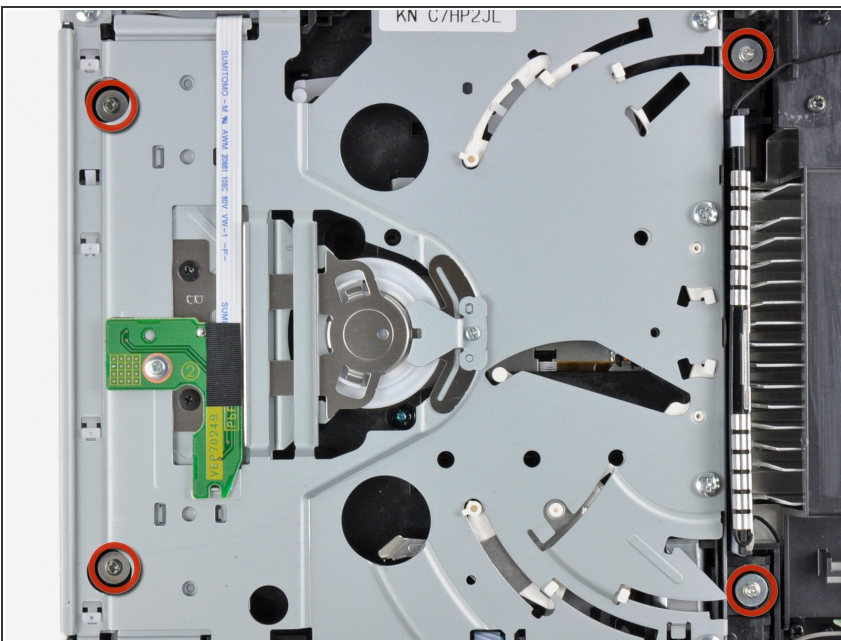
- Remove the two 8.2 mm Tri-Wing screws securing the DVD drive shield near the controller ports.

## Step 18



- Lift the DVD drive shield upward and remove it from the Wii.

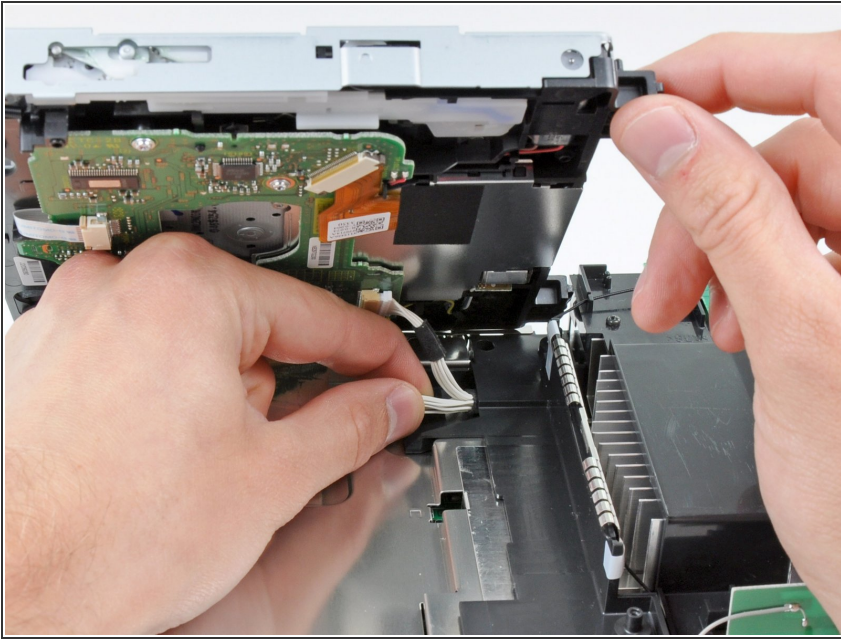
## Step 19



- Remove the four 9 mm Phillips screws securing the DVD drive to the bottom panel.

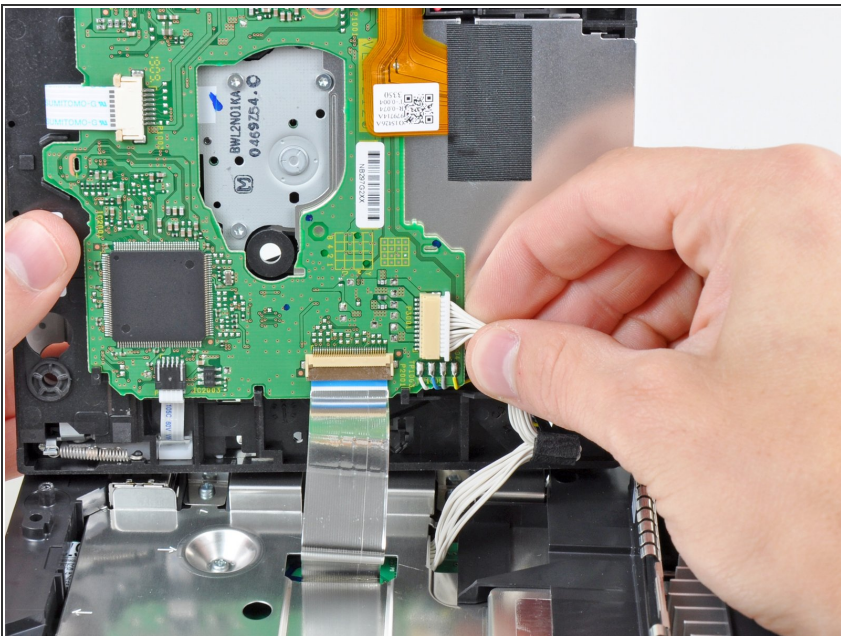


## Step 20



- Lift the side of the DVD drive opposite the controller ports enough to access the cables on its bottom face.
- Carefully pull the DVD drive power cable out from under the plastic shroud near the heat sink.

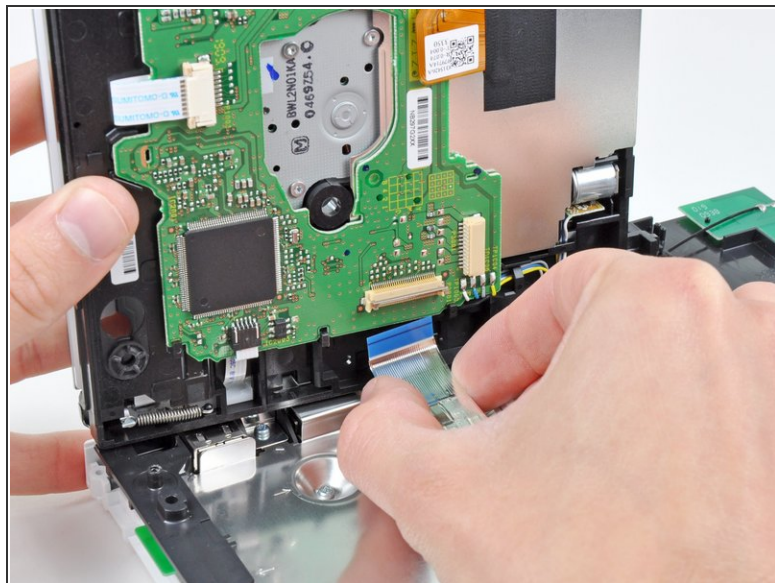
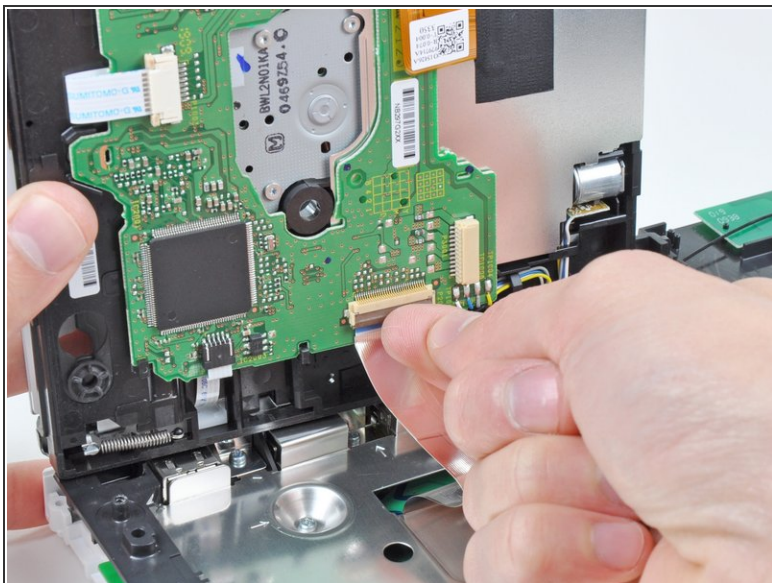
## Step 21



- Pull the DVD drive power cable away from its socket on the DVD drive.



## Step 22

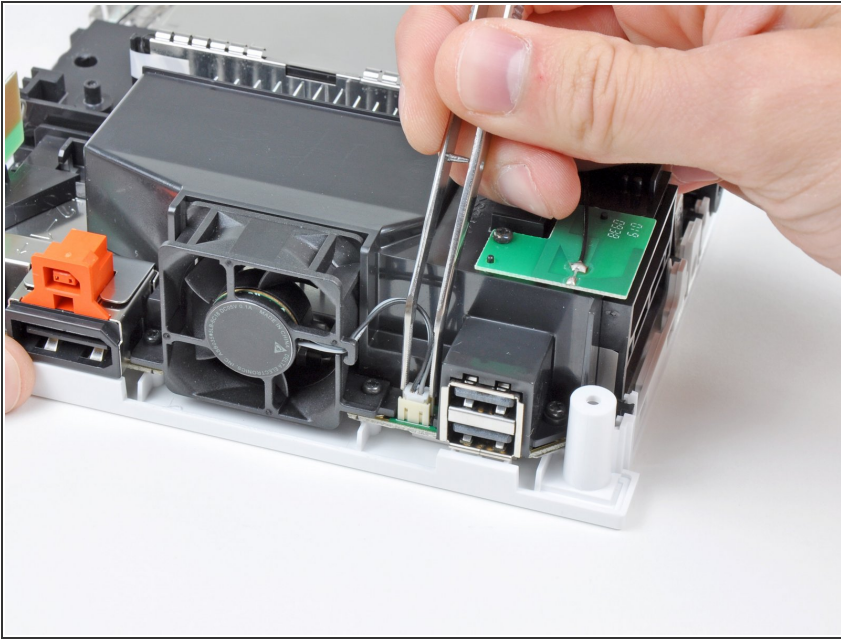


- Use your fingernail to flip up the retaining flap on the DVD drive ribbon cable socket.

⚠ Be sure you are prying up on the retaining flap, **not** the socket itself.

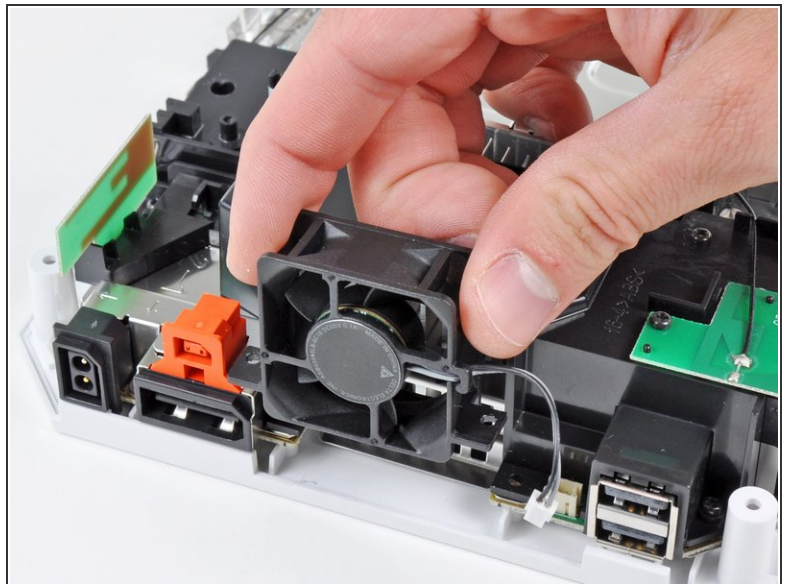
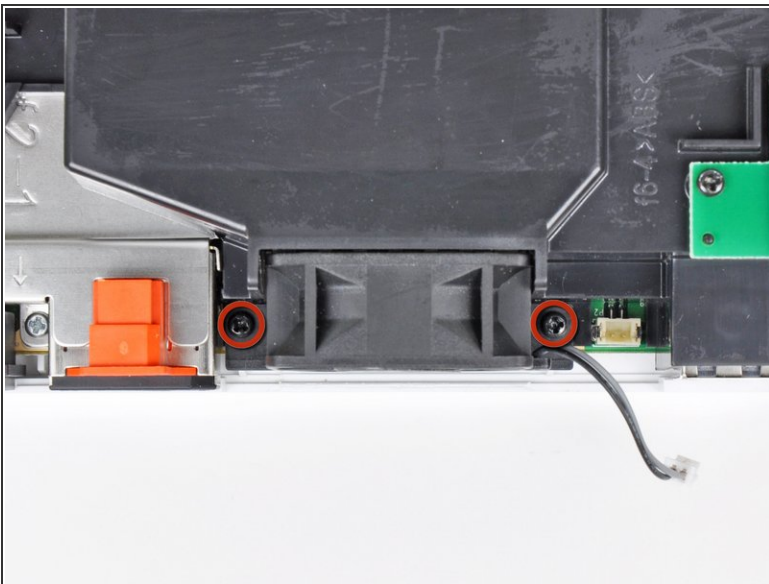
- Pull the DVD drive ribbon cable out of its socket.
- Remove the DVD drive from the Wii.

## Step 23 — Motherboard Cover



- Use a pair of tweezers to lift the fan connector up and out of its socket on the logic board.
- ⚠ Be sure your tweezers are clamped down on the fan connector, **not** the socket on the motherboard.

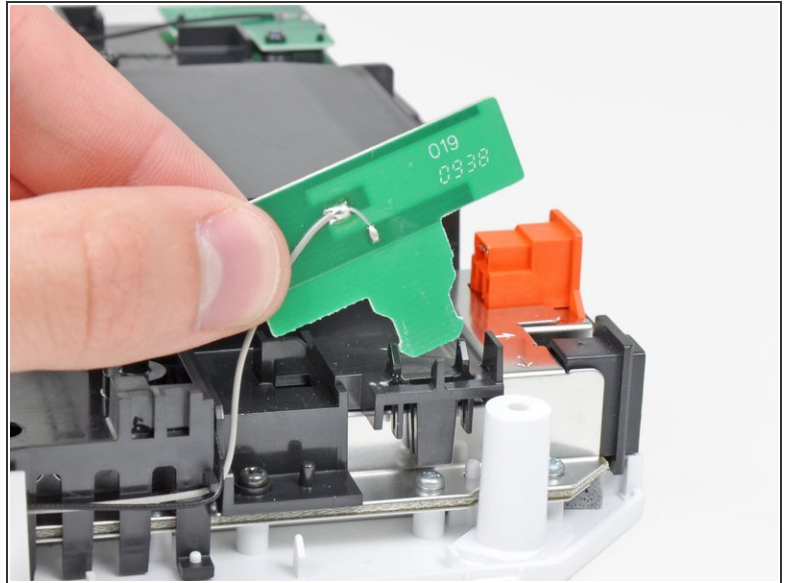
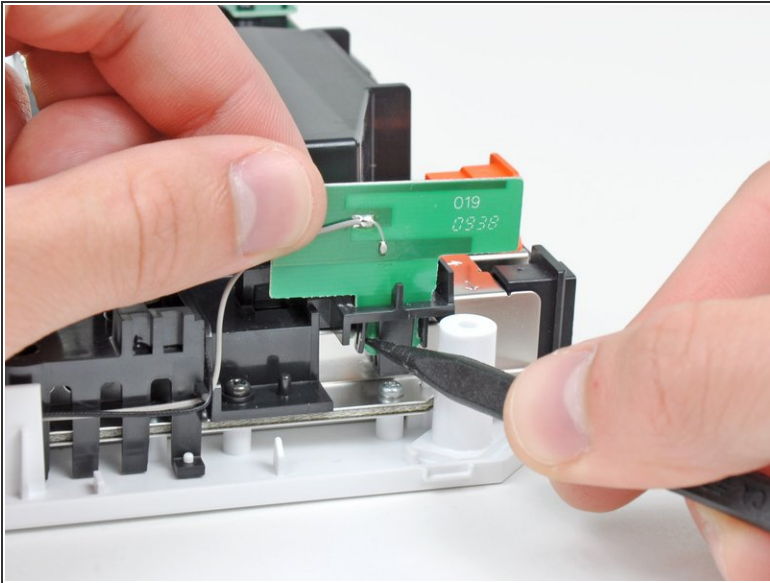
## Step 24



- Remove the two 10 mm Phillips screws securing the fan to the fan shroud.
- Remove the fan from the Wii.

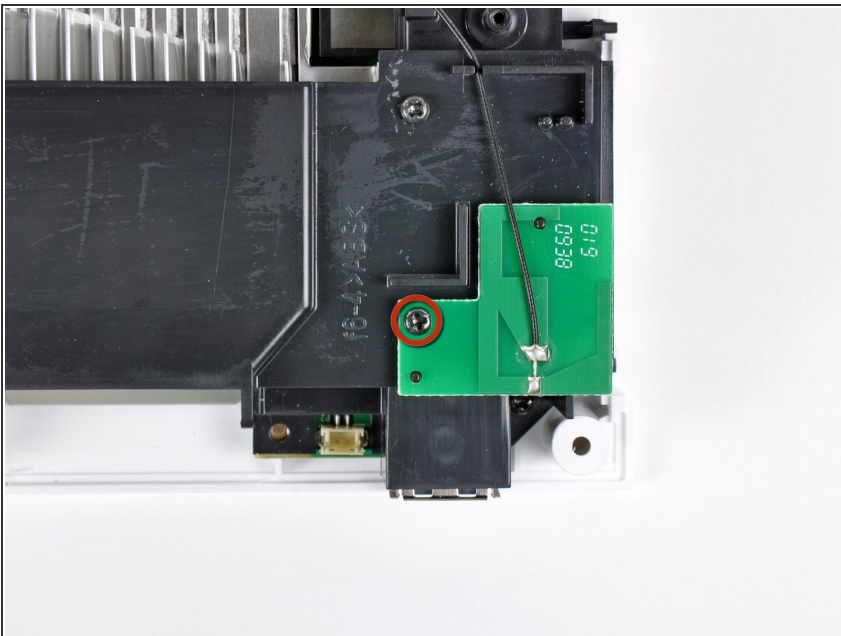


## Step 25



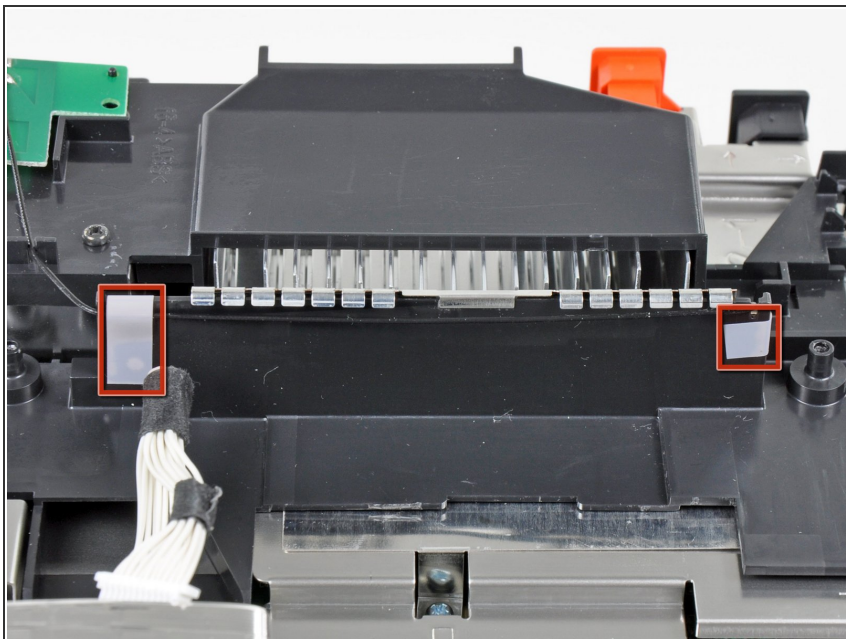
- Use the tip of a spudger or another fine-pointed tool to carefully pry one of the black plastic retaining fingers attached to the fan shroud away from the Wi-Fi antenna board.
- Lift the Wi-Fi antenna out of the fan shroud.

## Step 26



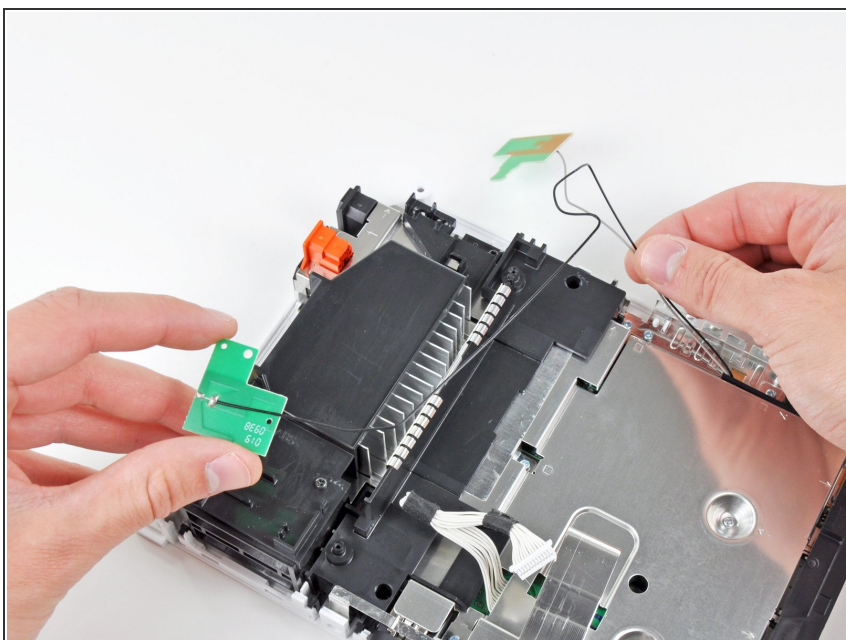
- Remove the single 10 mm Phillips screw securing the second Wi-Fi antenna to the top of the fan shroud.

## Step 27



- Remove the two pieces of tape securing the second Wi-Fi antenna cable to the plastic bracket near the heat sink.

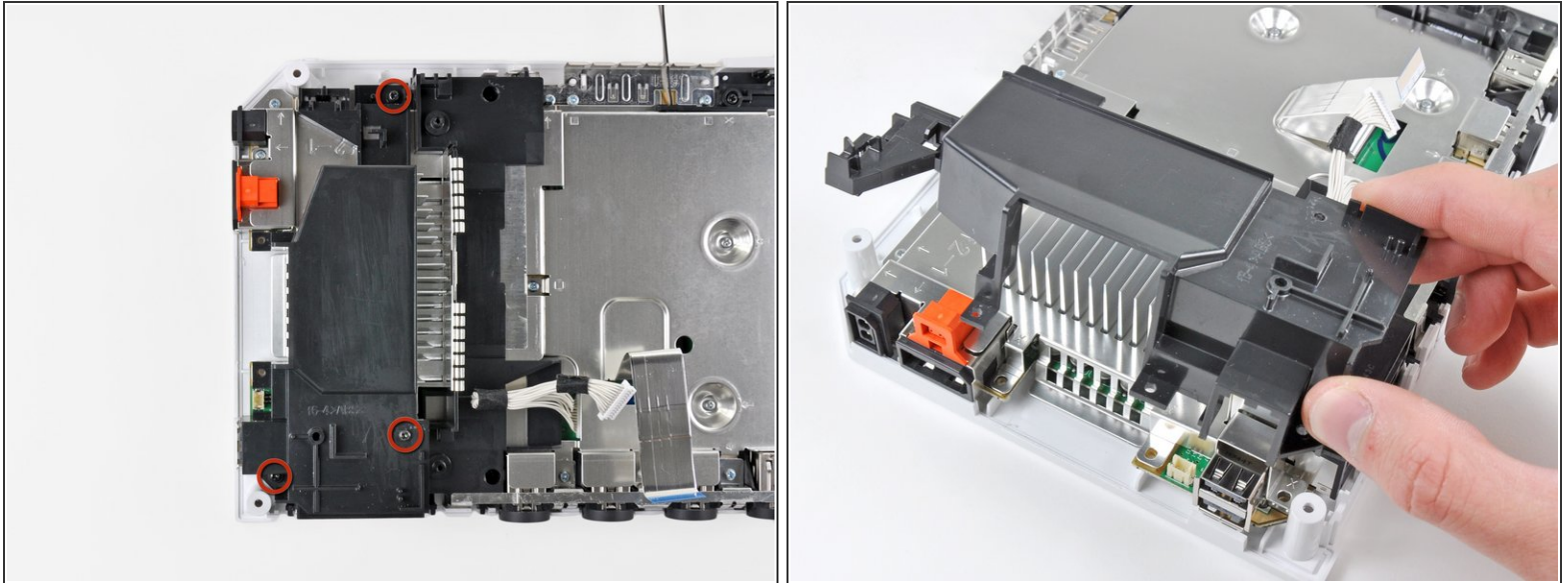
## Step 28



- Carefully de-route both antennas from the frame of the Wii and lay them aside.

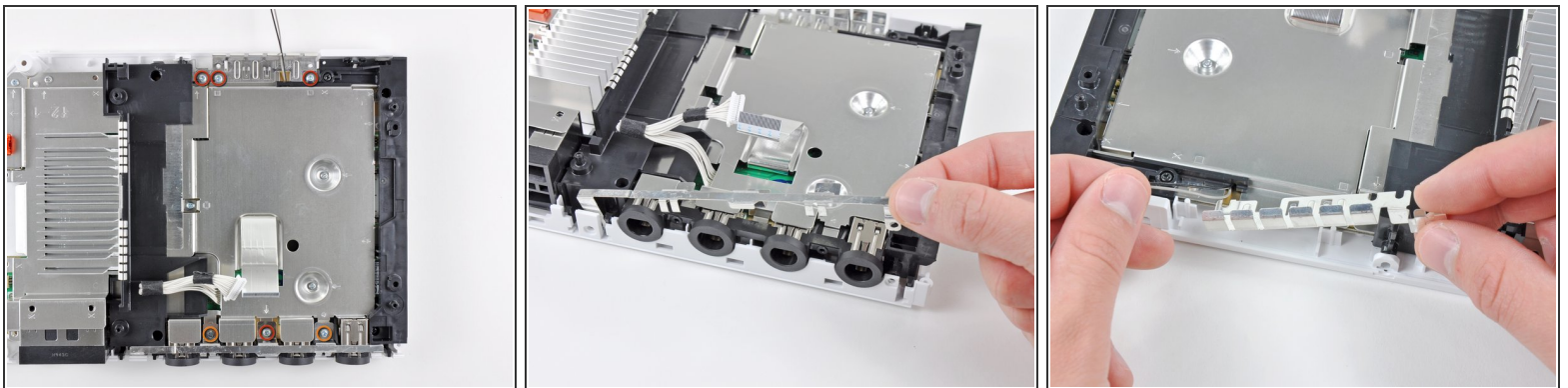


## Step 29



- Remove the three 10 mm Phillips screws securing the fan shroud to the Wii.
- Lift the fan shroud off the heat sink and remove it from the Wii.

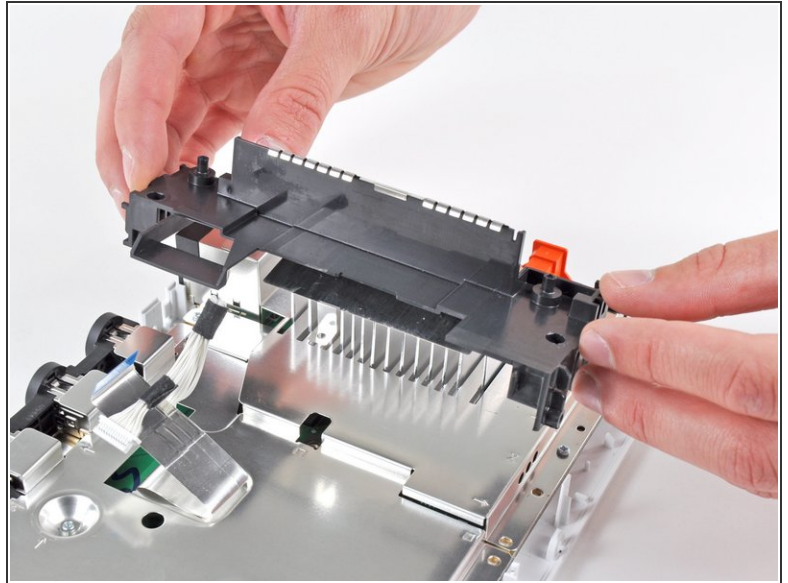
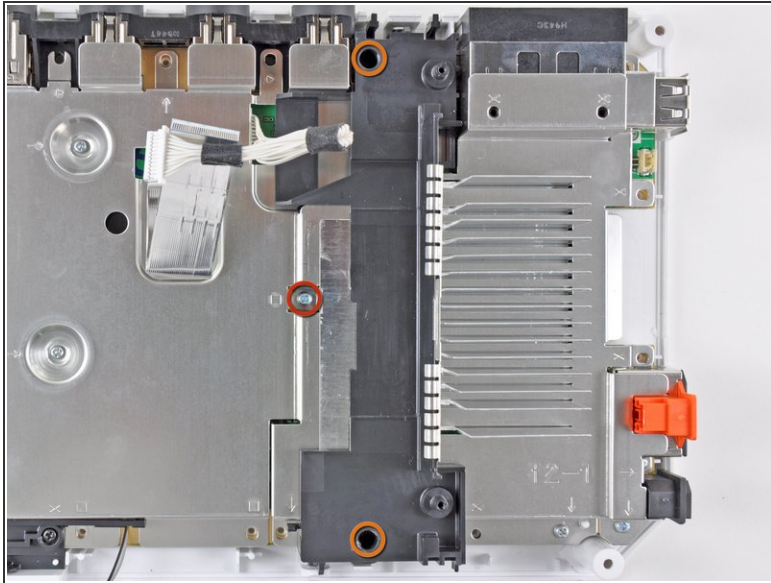
## Step 30



- Remove the following six screws securing the EMI fingers to the bottom panel:
  - Four 7 mm Phillips screws
  - Two 11.3 mm Phillips screws
- Remove both sets of EMI fingers from the Wii.

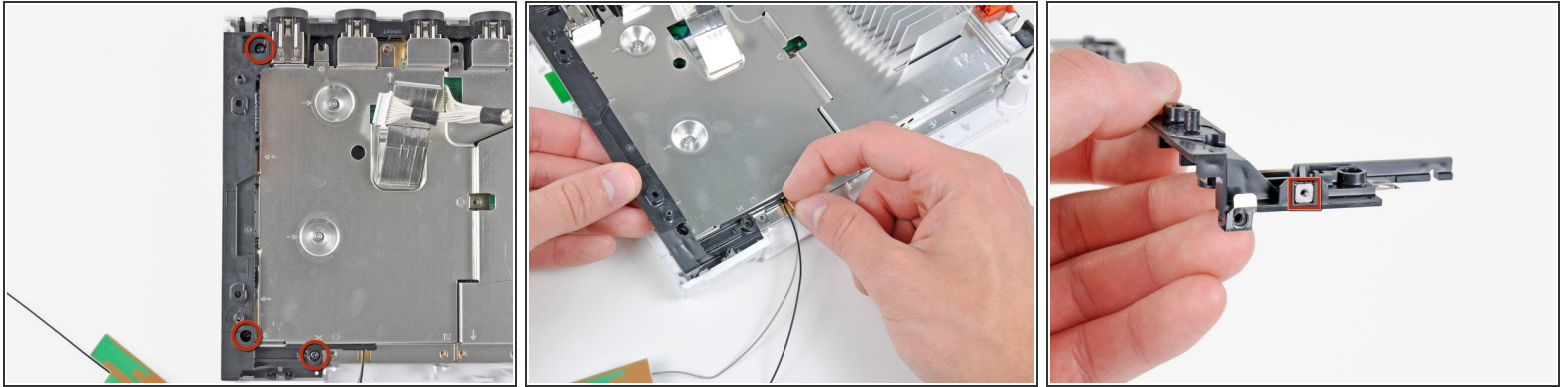


## Step 31



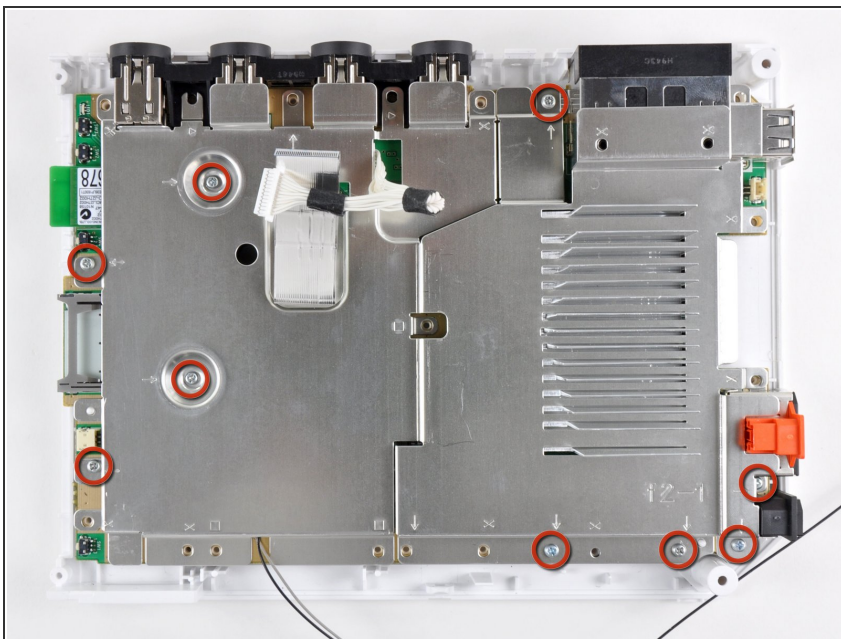
- Remove the following three screws:
  - One 7 mm Phillips screw
  - Two 10 mm Phillips screws
- Lift the bracket out of the Wii.

## Step 32



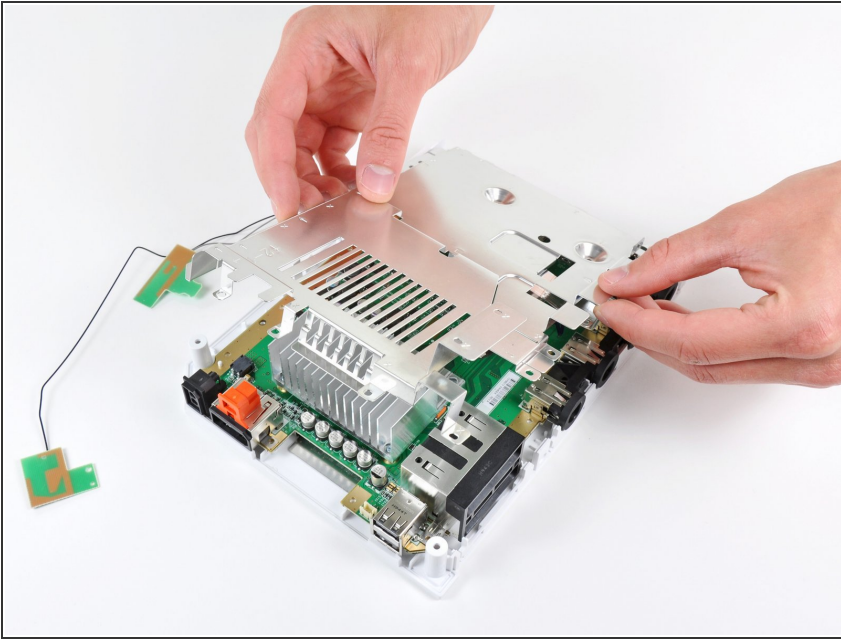
- Remove the three 10 mm Phillips screws securing the black bracket to the bottom panel near the front of the Wii.
  - Slightly lift the bracket and use your other hand to pull the retaining clip away from where the Wi-Fi antennas enter the motherboard shield.
  - Remove the bracket from the Wii.
- i** Be sure not to lose the small square nut loosely held by the black plastic bracket.

## Step 33



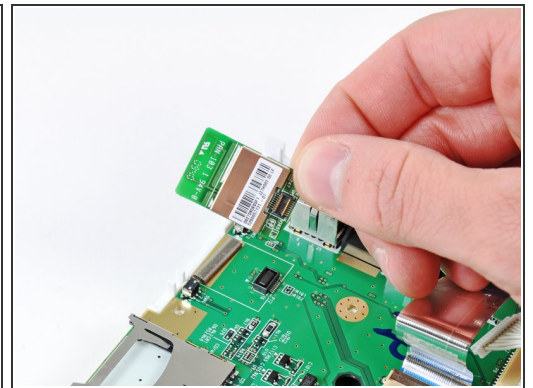
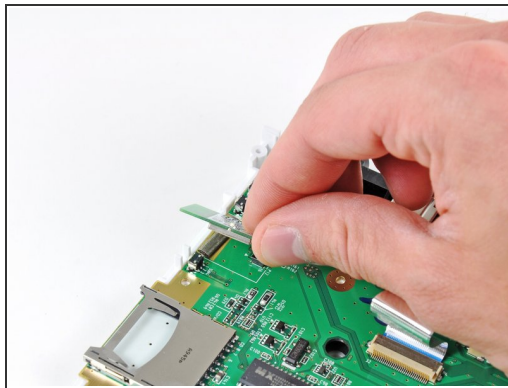
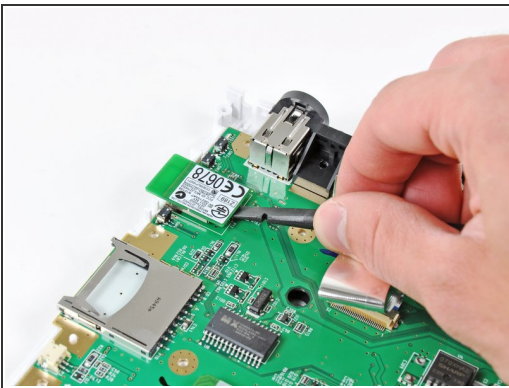
- Remove the nine remaining 7 mm Phillips screws securing the motherboard cover to the bottom panel.

## Step 34



- Carefully lift the motherboard cover off the motherboard, minding any cables that may get caught.

## Step 35 — Bluetooth Board



- Use the flat end of a spudger or your fingertips to lift up the end of the Bluetooth board nearest the center of the motherboard.
- Carefully peel the front edge of the Bluetooth board off the EMI foam attached to the motherboard.
- Remove the Bluetooth board.

To reassemble your device, follow these instructions in reverse order.