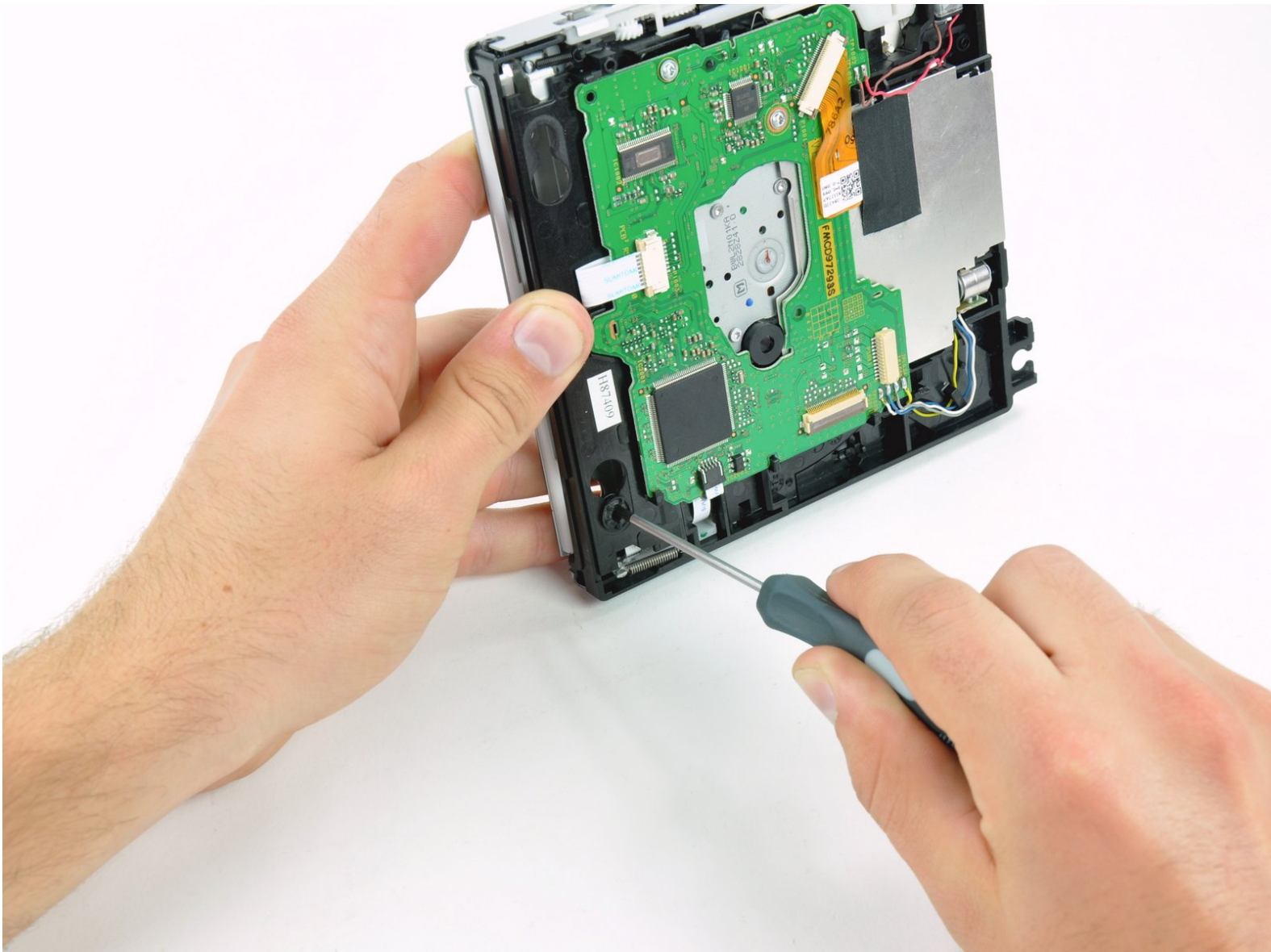




Nintendo Wii DVD Drive Replacement

Replace the internal DVD drive on your Wii.

Written By: David Hodson



INTRODUCTION

Use this guide to replace a broken DVD drive. Depending on your new part, you may have to swap out the four rubber grommets on the DVD drive housing.



TOOLS:

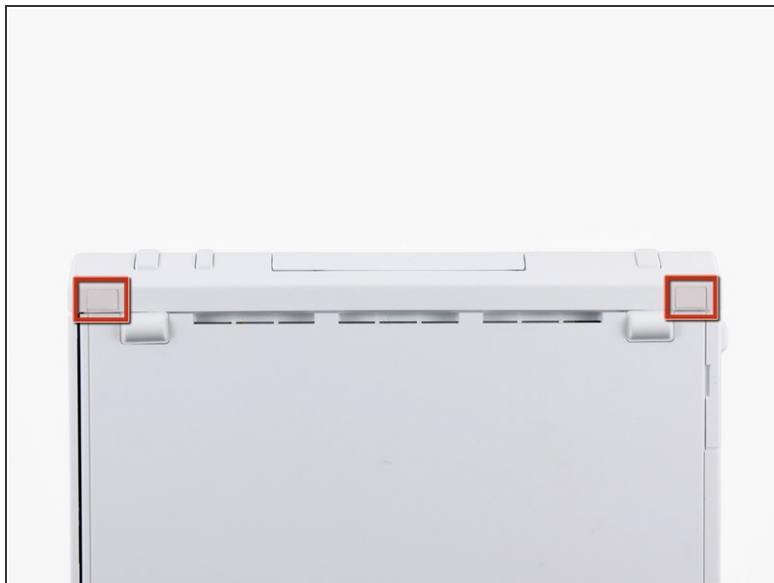
- [Metal Spudger](#) (1)
- [Phillips #00 Screwdriver](#) (1)
- [Tri-wing Screwdriver](#) (1)
- [Tweezers](#) (1)
- [Phillips 0000 Screwdriver](#) (1)



PARTS:

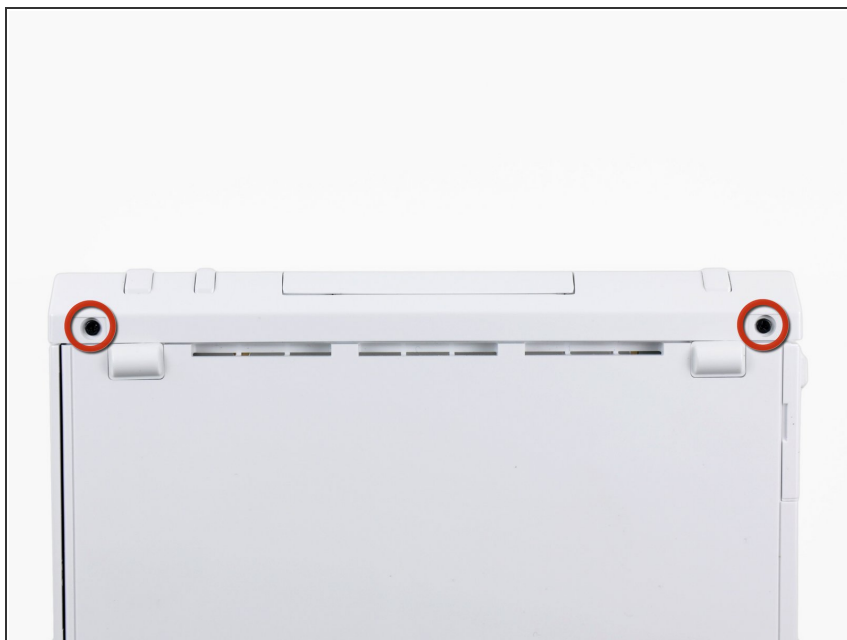
- [Nintendo Wii DVD Drive Power Cable](#) (1)
(Optional, included with a complete replacement drive)
- [Nintendo Wii DVD Drive Data Cable](#) (1)
(Optional, included with a complete replacement drive)
- [Nintendo Wii DVD Drive](#) (1)
- [CR2032 Lithium Battery](#) (1)
(Optional)

Step 1 — Faceplate



- Use a metal spudger to remove the white plastic screw covers stuck to the lower case near the front of the Wii.

Step 2



- Remove the two 8.3 mm Tri-Wing screws hidden under the covers you just removed.

Step 3



- Remove the single 5.9 mm Phillips screw under the controller port door nearest the faceplate.

Step 4



- Use a metal spudger to remove the rubber foot stuck to the side of the Wii near the DVD drive opening.

Step 5



- Remove the single 5.9 mm Phillips screw hidden under the foot you just removed.

Step 6



- Carefully pull the faceplate away from the front of the Wii.
- Use a pair of tweezers to disconnect the LED cable's plastic connector from the motherboard.
- Remove the faceplate.

Step 7 — Outer Case



- Open the controller port cover until it is perpendicular to the black controller port bezel.
- Pull the controller port cover straight up to release it from the outer case.
- ⓘ Repeat this procedure for the memory card port cover.

Step 8



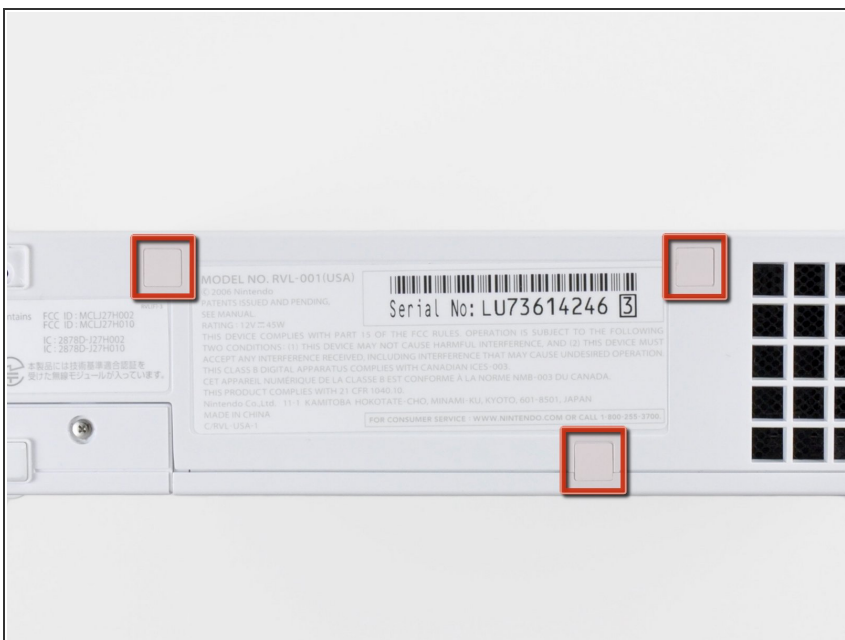
- Remove the two remaining 4.1 mm Phillips screws along the top edge of the black plastic controller port bezel.
- Lift the bezel from the long edge furthest away from the controller ports and remove it from the Wii.

Step 9



- Remove the two 5 mm Phillips screws above the controller ports.

Step 10



- Use a metal spudger to remove the three highlighted screw covers stuck to the side of the Wii.

Step 11



- Remove the following screws:
 - Two 5 mm Phillips screws
 - One 8.2 mm Tri-Wing screw

Step 12



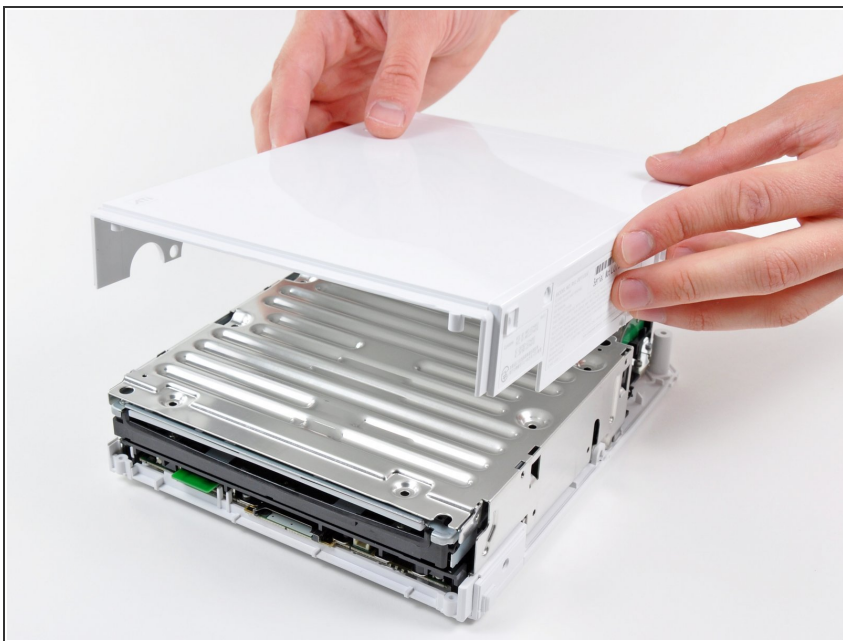
- Use a metal spudger to remove the two rubber feet stuck to the bottom face of the Wii near the rear ports.

Step 13



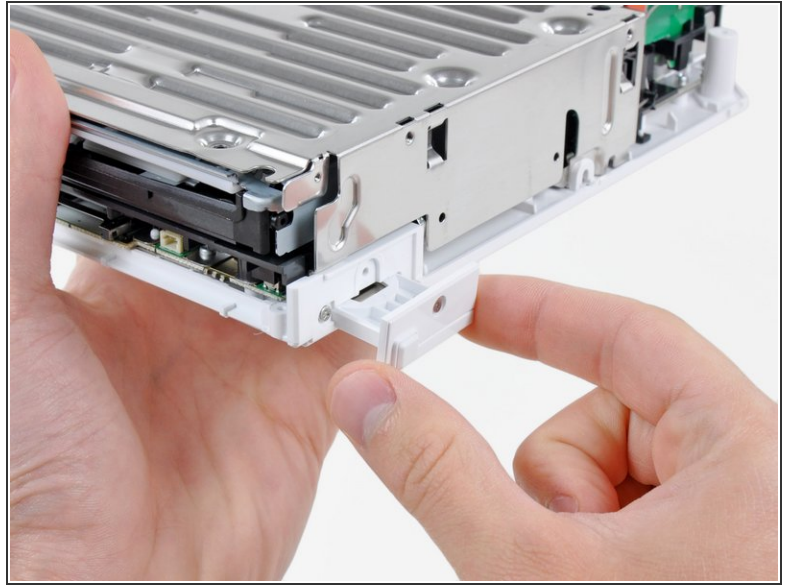
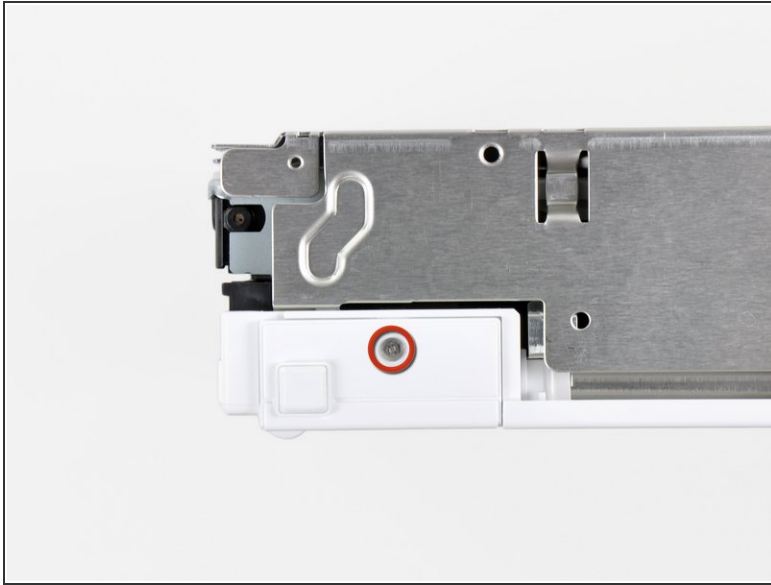
- Remove the two 8.2 mm Tri-Wing screws hidden under the feet you just removed.

Step 14



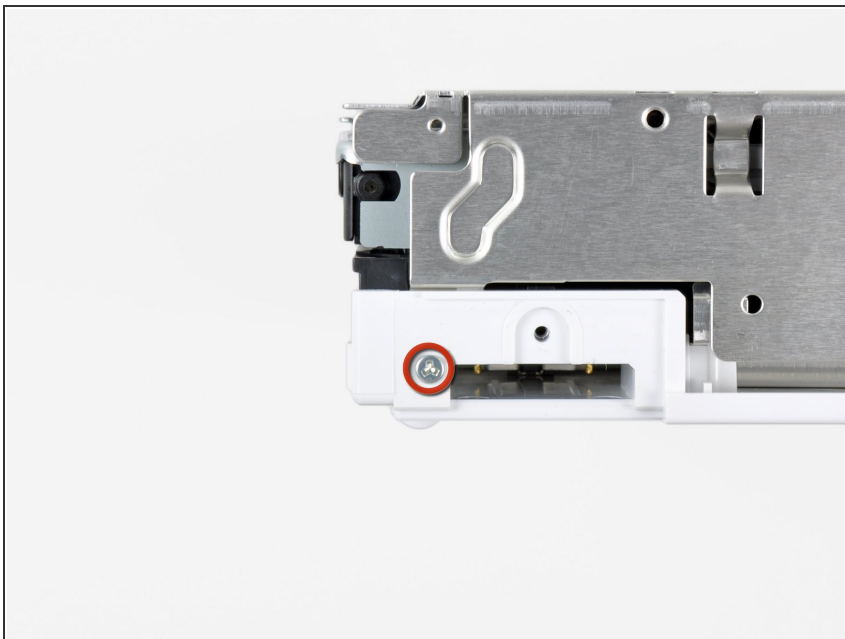
- Lift the outer case straight up off the body of the Wii.

Step 15 — DVD Drive



- Remove the small Phillips screw securing the battery door to the bottom panel.
- ⓘ This screw is captive to the battery door.
- Pull the battery door out of the Wii.
- ⓘ This is a good time to change the CR2032 battery if it hasn't been changed recently.

Step 16



- Remove the 8.2 mm Tri-Wing screw that was hidden beneath the battery door.

Step 17



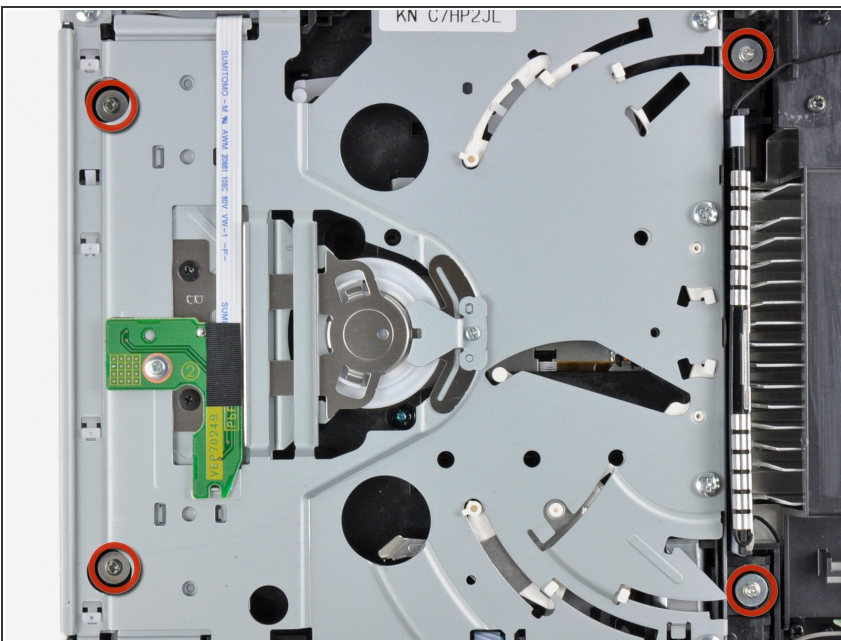
- Remove the two 8.2 mm Tri-Wing screws securing the DVD drive shield near the controller ports.

Step 18



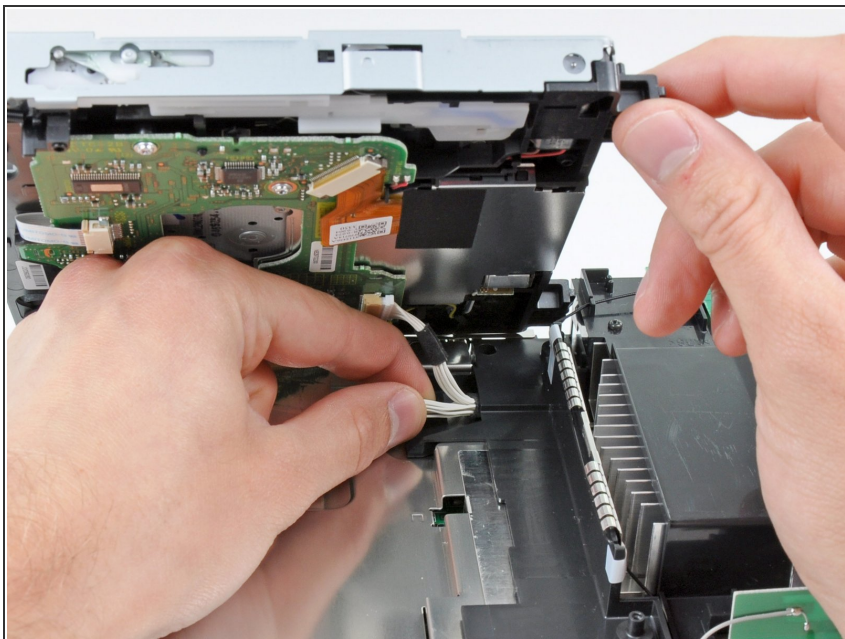
- Lift the DVD drive shield upward and remove it from the Wii.

Step 19



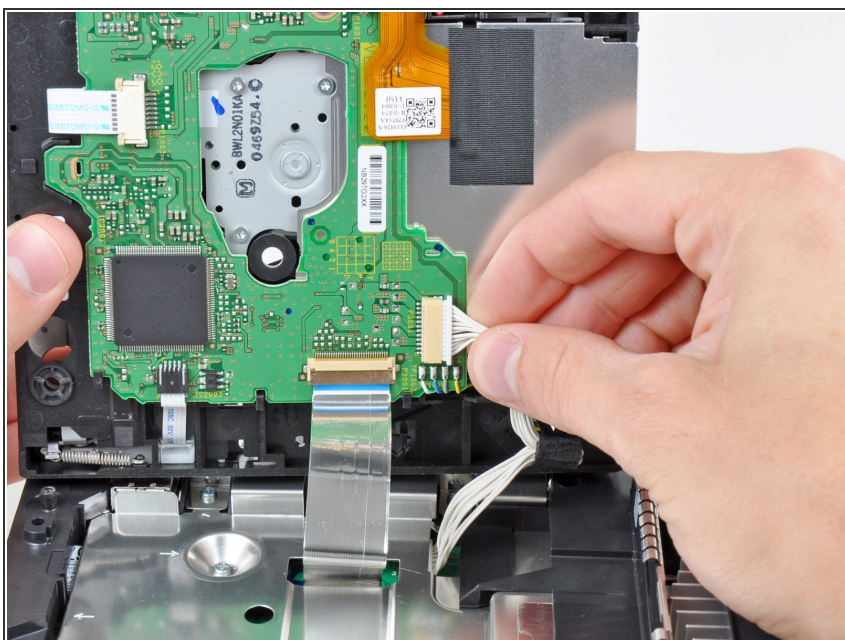
- Remove the four 9 mm Phillips screws securing the DVD drive to the bottom panel.

Step 20



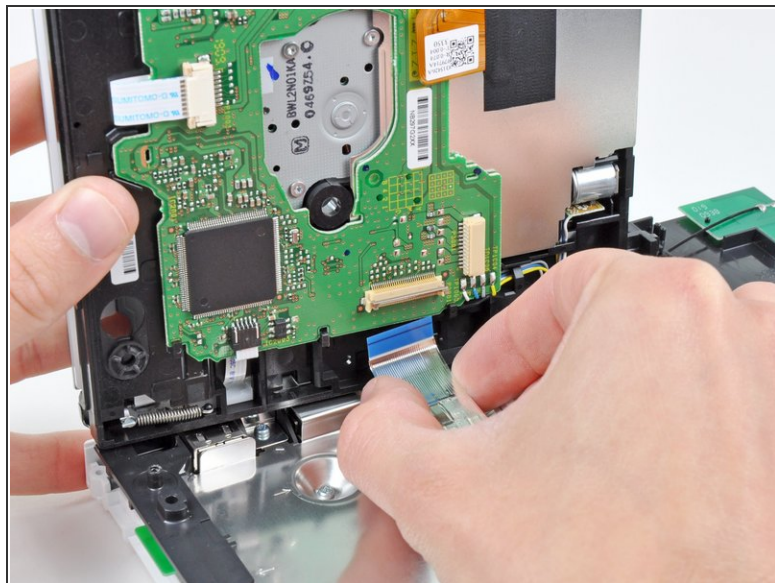
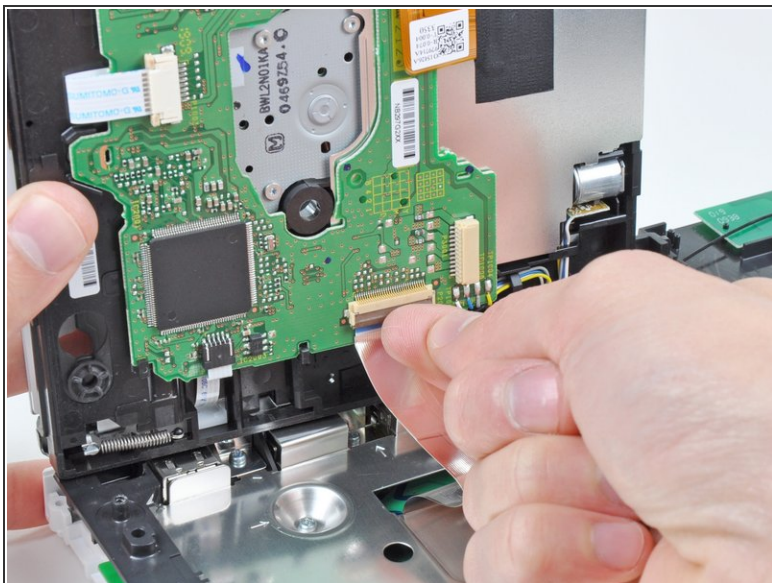
- Lift the side of the DVD drive opposite the controller ports enough to access the cables on its bottom face.
- Carefully pull the DVD drive power cable out from under the plastic shroud near the heat sink.

Step 21



- Pull the DVD drive power cable away from its socket on the DVD drive.

Step 22

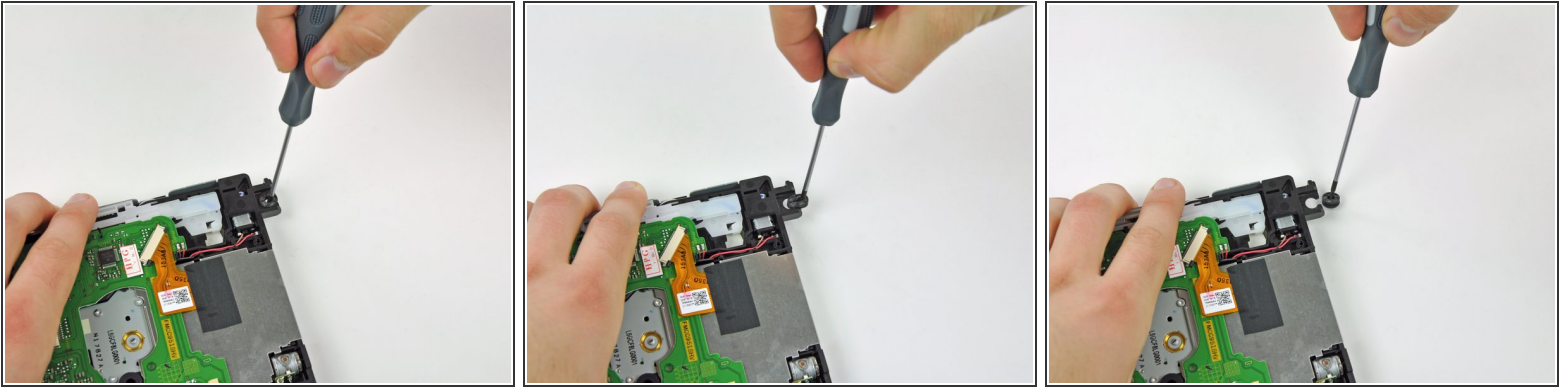


- Use your fingernail to flip up the retaining flap on the DVD drive ribbon cable socket.

⚠ Be sure you are prying up on the retaining flap, **not** the socket itself.

- Pull the DVD drive ribbon cable out of its socket.
- Remove the DVD drive from the Wii.

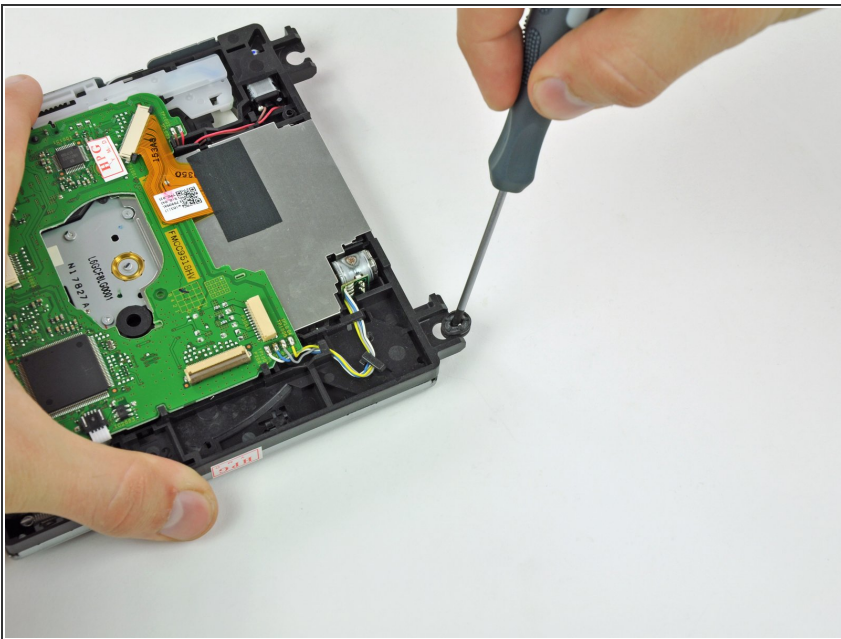
Step 23 — DVD Drive



i The following steps are only necessary if your replacement Wii DVD drive does not include the four rubber grommets along the front and rear of the DVD drive housing.

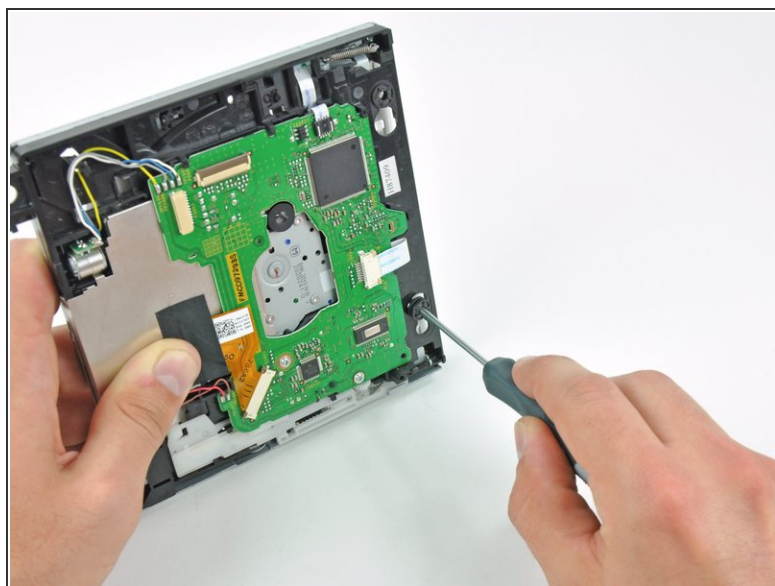
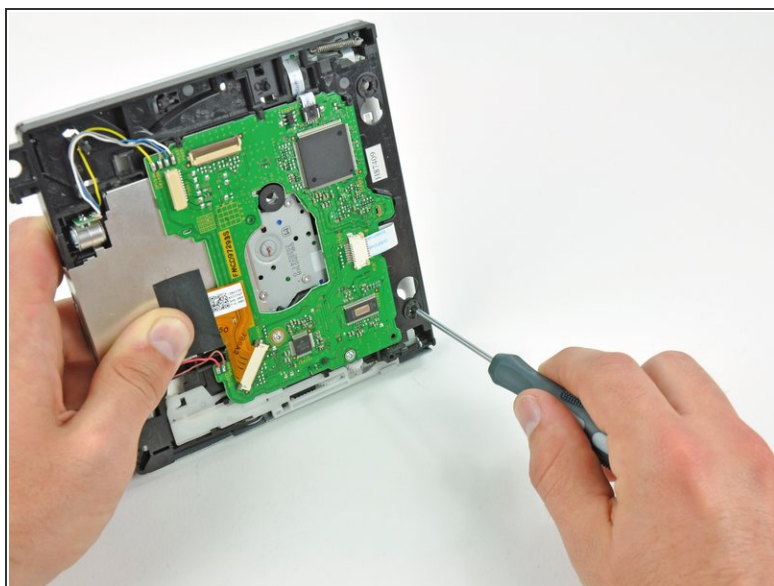
- Insert the tip of a long, skinny screwdriver into the hole in the center of the first grommet on the rear of the DVD drive housing.
- Pull the grommet straight away from the DVD drive housing until it is free.

Step 24



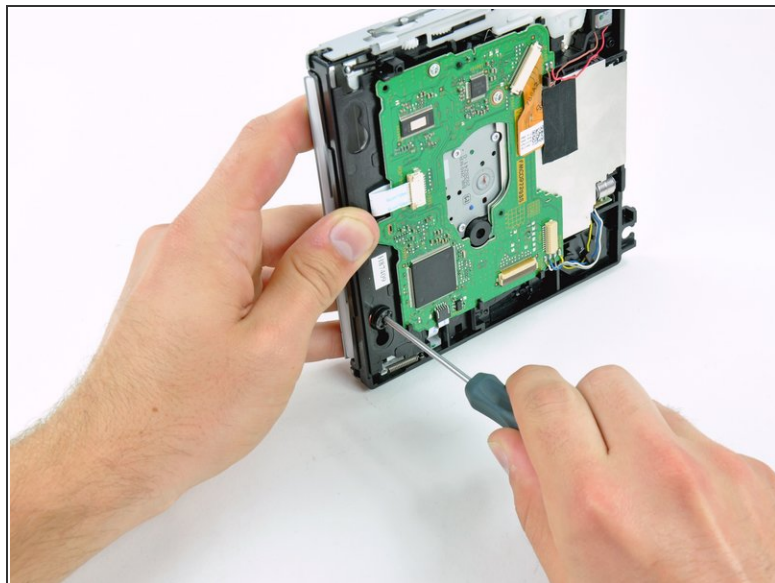
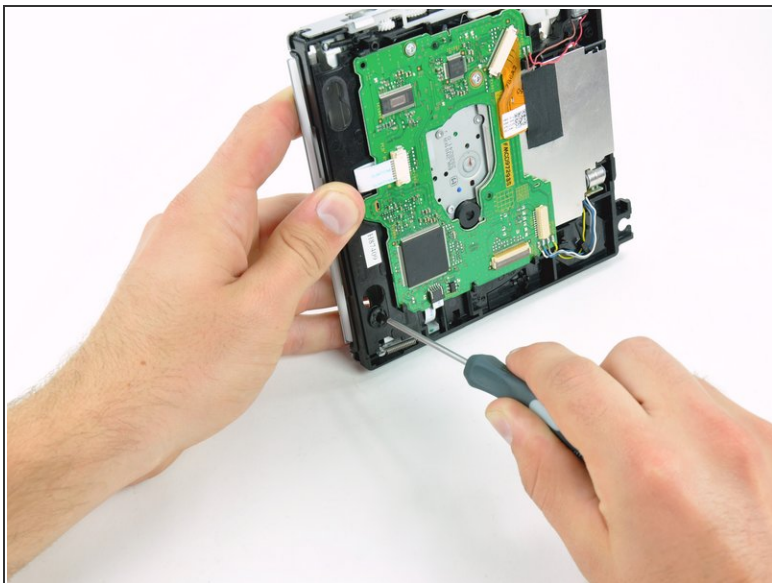
- Repeat the procedure described in the preceding step for the second rubber grommet on the rear of the DVD drive housing.

Step 25



- i** Set the DVD drive on its side, with the two rubber grommets along the front of the drive facing you.
- Insert the end of the skinny screwdriver into the hole in the center of the lower rubber grommet along the front of the DVD drive housing.
 - Pull the screwdriver straight up until the grommet is free.

Step 26



- ✦ Rotate the DVD drive housing 180 degrees so that it is resting on the side opposite that of the previous step.
- Repeat the procedure in the preceding step to remove the second rubber grommet along the front of the DVD drive housing.

To reassemble your device, follow these instructions in reverse order.