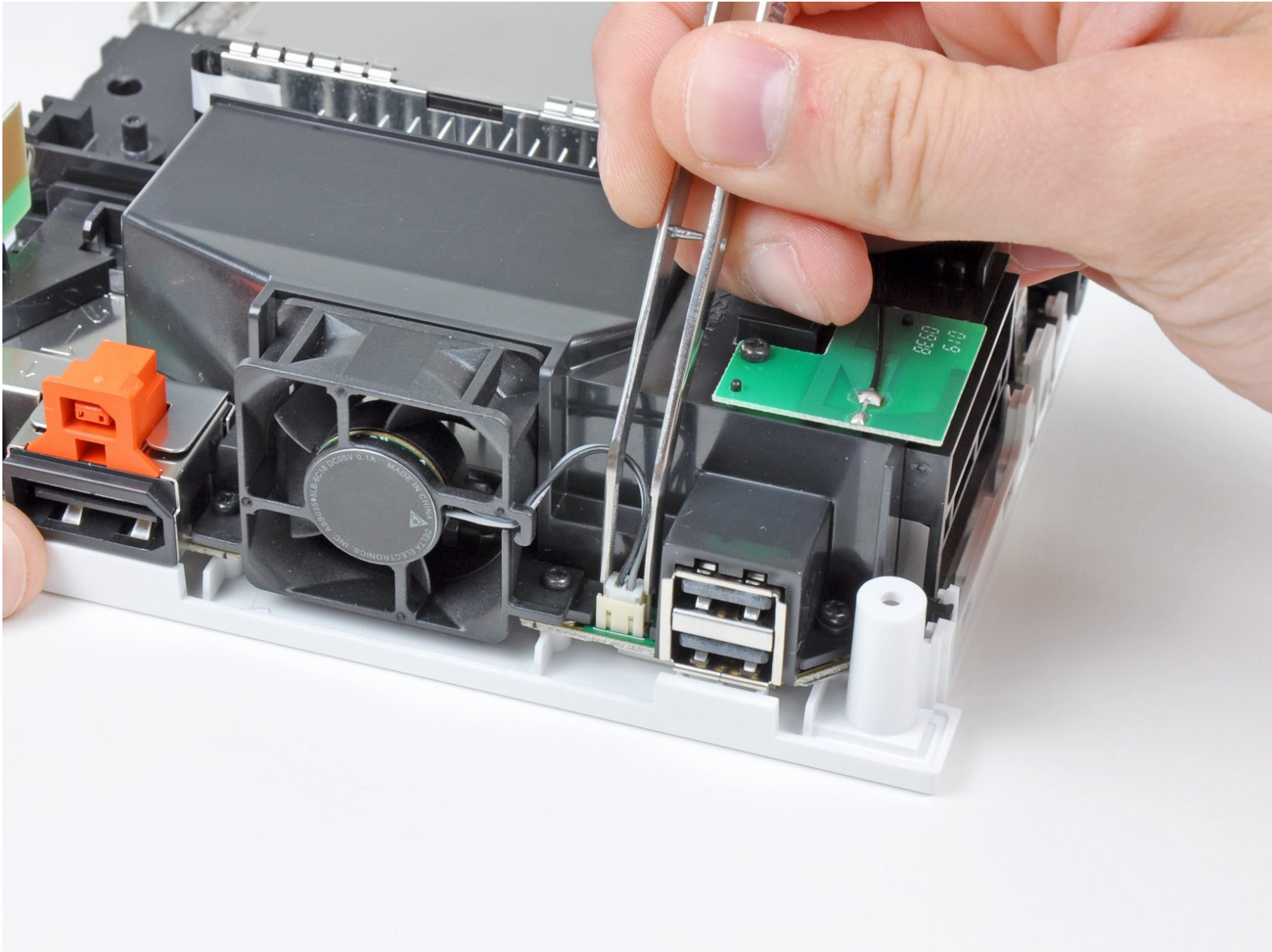




Nintendo Wii Motherboard Cover Replacement

Written By: Andrew Bookholt

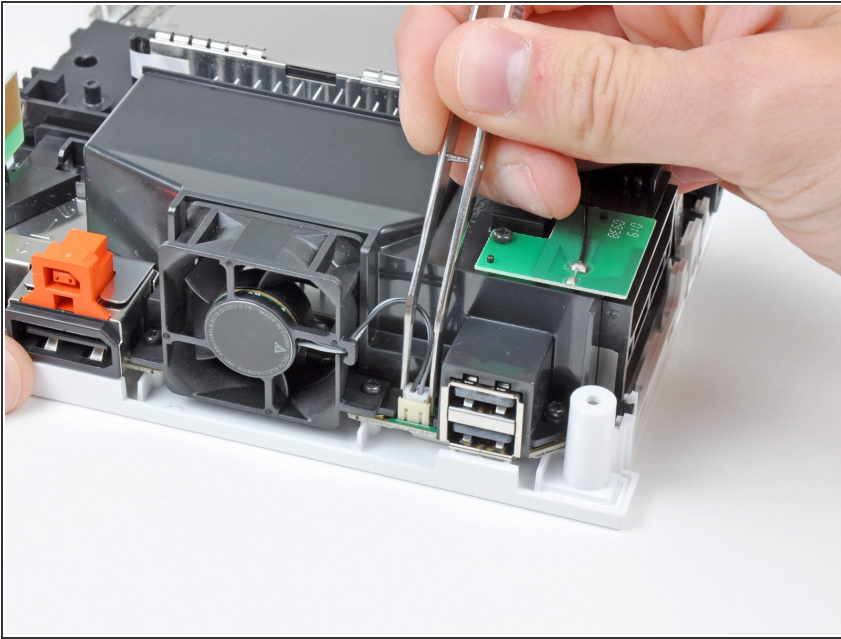




TOOLS:

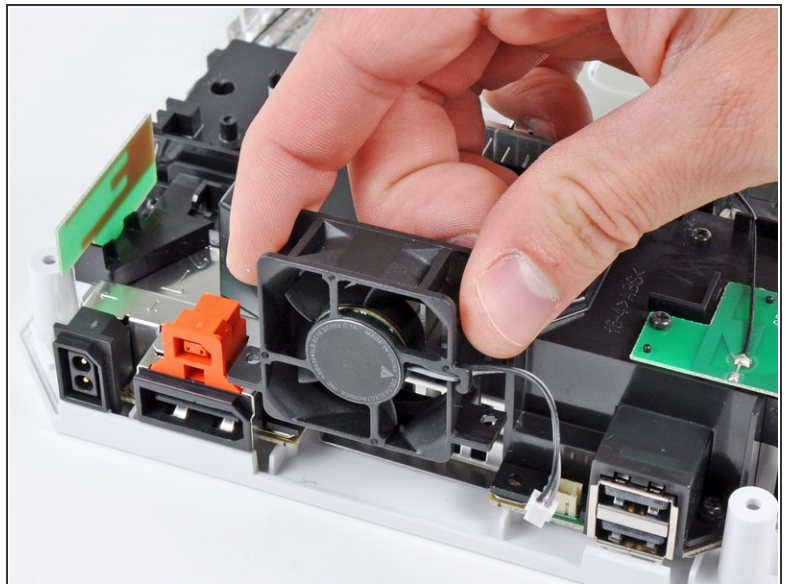
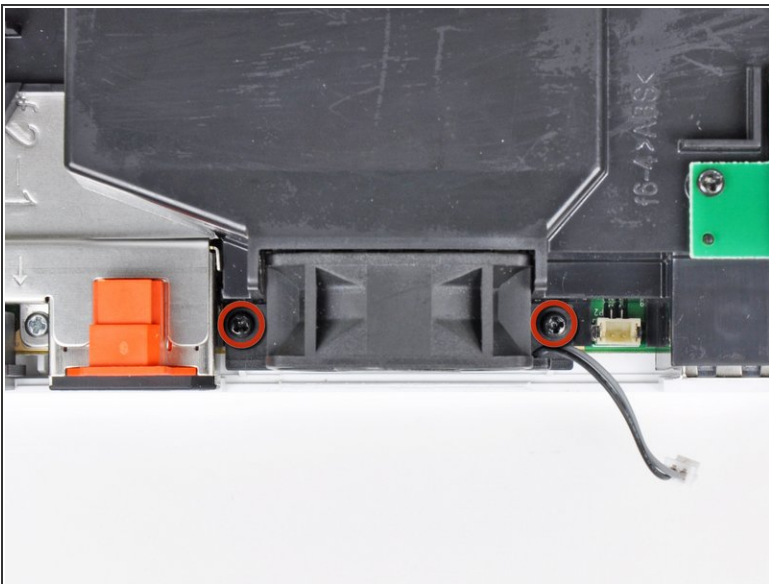
- [Phillips #0 Screwdriver](#) (1)
- [Spudger](#) (1)
- [Tweezers](#) (1)

Step 1 — Motherboard Cover



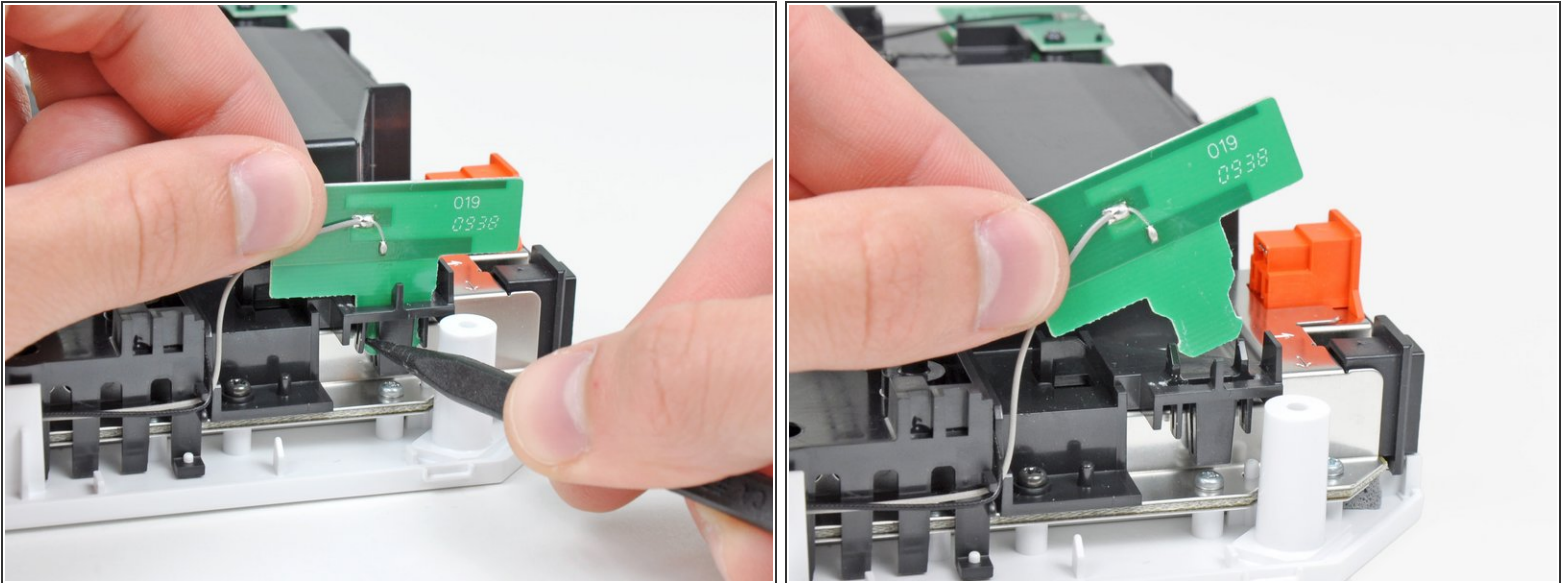
- Use a pair of tweezers to lift the fan connector up and out of its socket on the logic board.
- ⚠ Be sure your tweezers are clamped down on the fan connector, **not** the socket on the motherboard.

Step 2



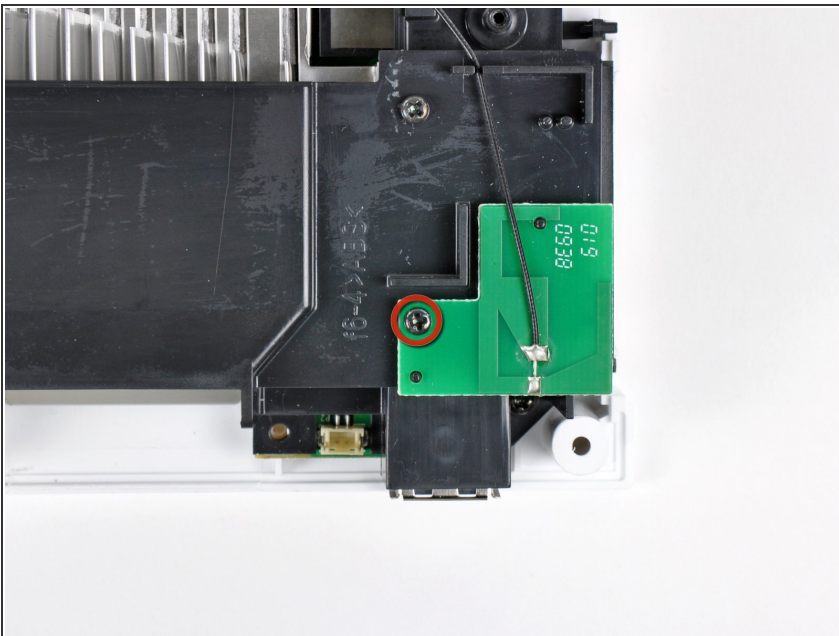
- Remove the two 10 mm Phillips screws securing the fan to the fan shroud.
- Remove the fan from the Wii.

Step 3



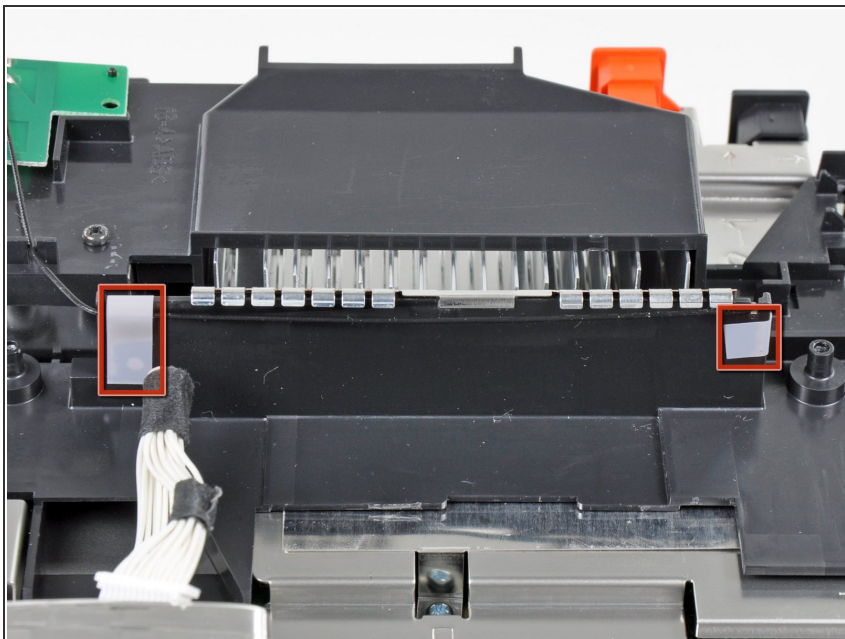
- Use the tip of a spudger or another fine-pointed tool to carefully pry one of the black plastic retaining fingers attached to the fan shroud away from the Wi-Fi antenna board.
- Lift the Wi-Fi antenna out of the fan shroud.

Step 4



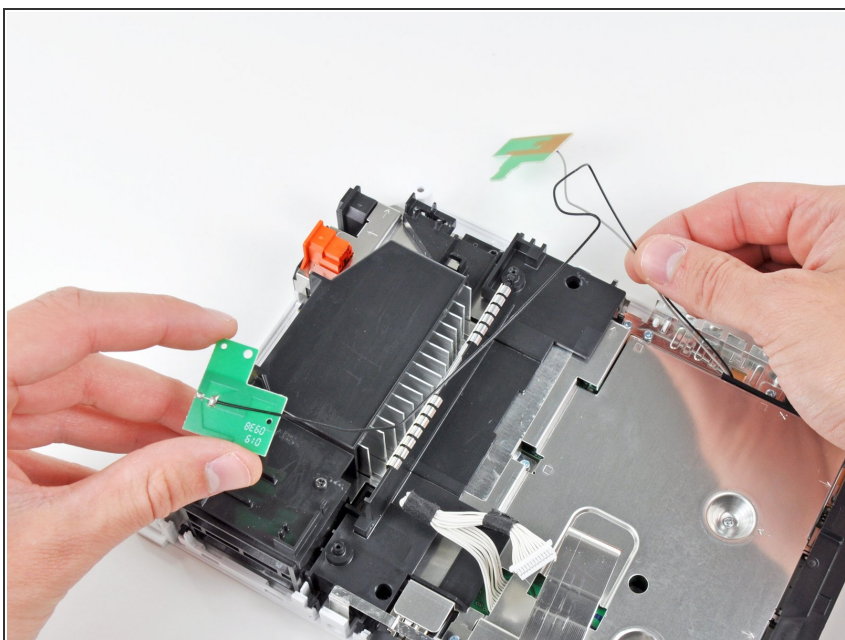
- Remove the single 10 mm Phillips screw securing the second Wi-Fi antenna to the top of the fan shroud.

Step 5



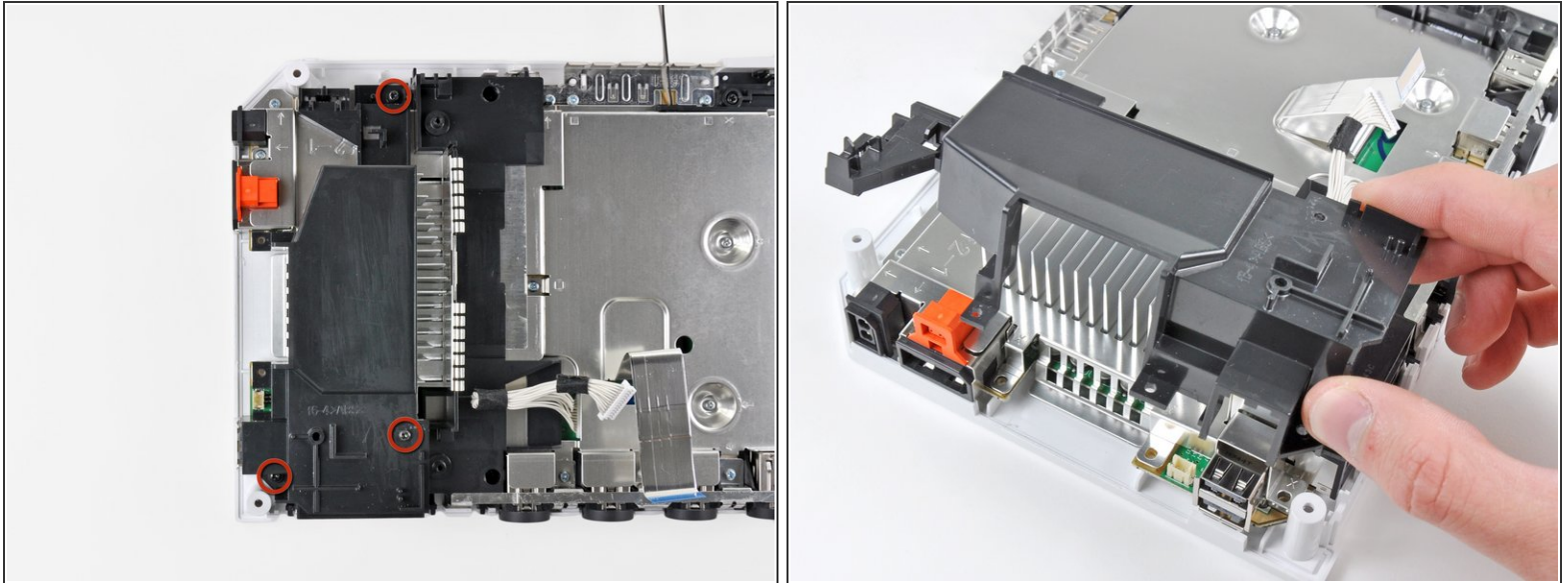
- Remove the two pieces of tape securing the second Wi-Fi antenna cable to the plastic bracket near the heat sink.

Step 6



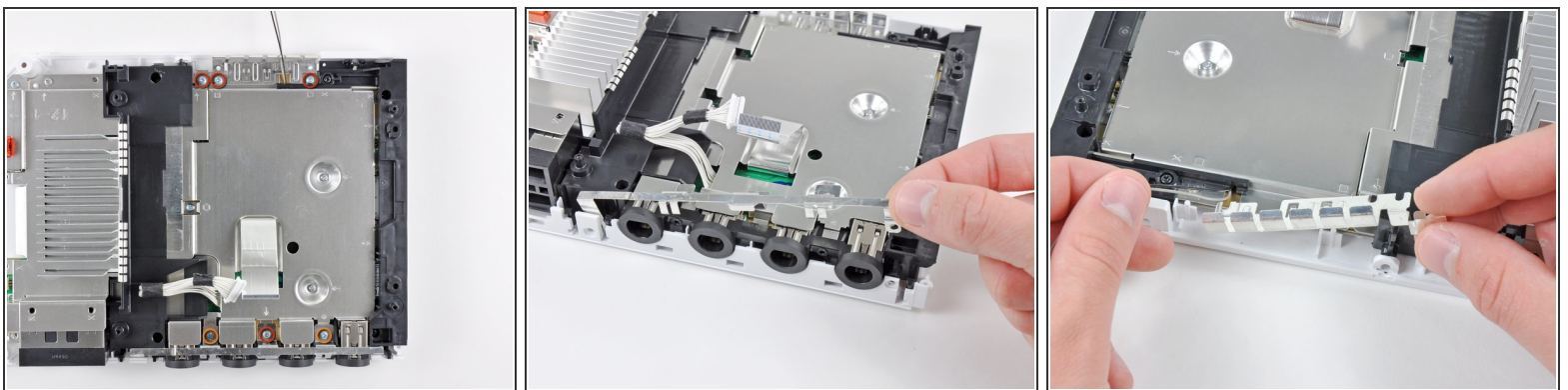
- Carefully de-route both antennas from the frame of the Wii and lay them aside.

Step 7



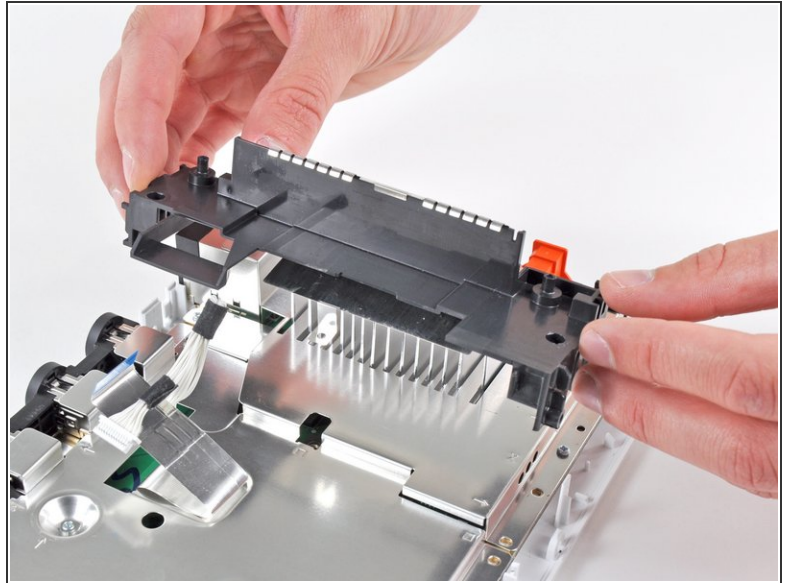
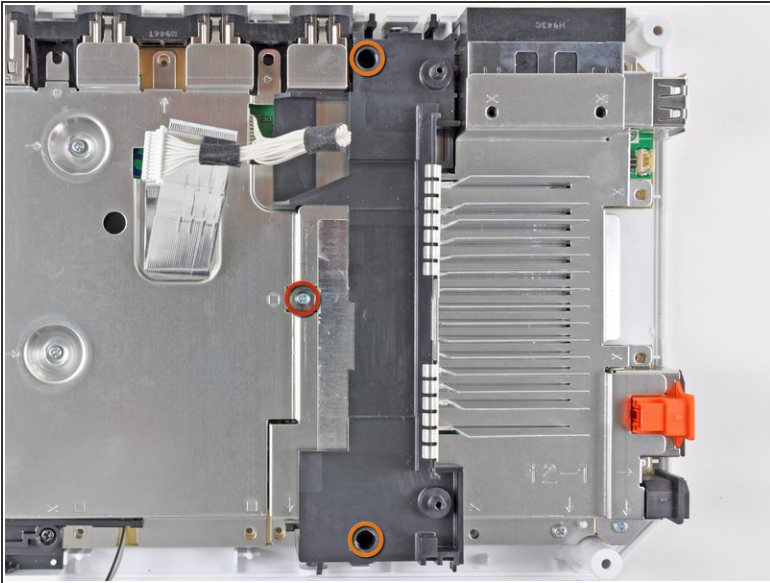
- Remove the three 10 mm Phillips screws securing the fan shroud to the Wii.
- Lift the fan shroud off the heat sink and remove it from the Wii.

Step 8



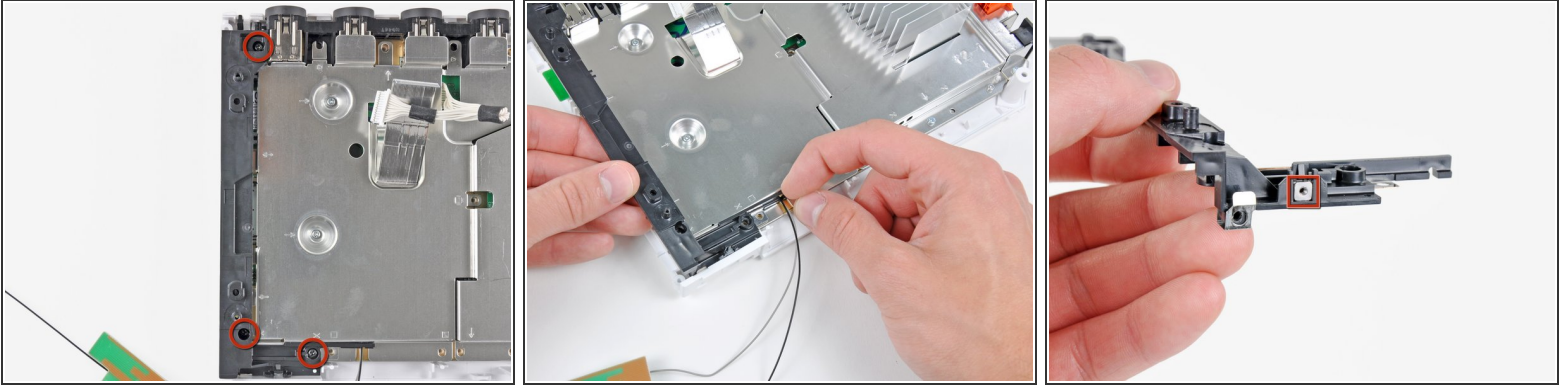
- Remove the following six screws securing the EMI fingers to the bottom panel:
 - Four 7 mm Phillips screws
 - Two 11.3 mm Phillips screws
- Remove both sets of EMI fingers from the Wii.

Step 9



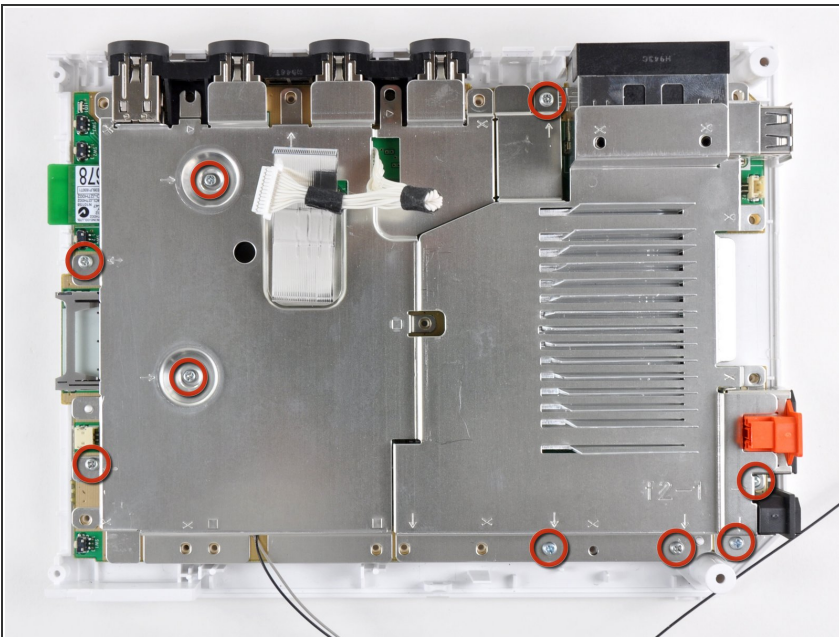
- Remove the following three screws:
 - One 7 mm Phillips screw
 - Two 10 mm Phillips screws
- Lift the bracket out of the Wii.

Step 10



- Remove the three 10 mm Phillips screws securing the black bracket to the bottom panel near the front of the Wii.
 - Slightly lift the bracket and use your other hand to pull the retaining clip away from where the Wi-Fi antennas enter the motherboard shield.
 - Remove the bracket from the Wii.
- i** Be sure not to lose the small square nut loosely held by the black plastic bracket.

Step 11



- Remove the nine remaining 7 mm Phillips screws securing the motherboard cover to the bottom panel.

Step 12



- Carefully lift the motherboard cover off the motherboard, minding any cables that may get caught.

To reassemble your device, follow these instructions in reverse order.