



Nintendo Wii Remote & Wii Nunchuk Accessory Disassembly/Reassembly

The Wii was first released on November 19, 2006. The model number of the original Wii remote I will be tearing apart is RVL-003. My partner is also going to be showing how to tear down a Wii nunchuk. The model number of the Wii nunchuk is RVL-004.

Written By: Linda Bowers



INTRODUCTION

The Wii was first released on November 19, 2006.

The model number of the original Wii remote I will be tearing apart is RVL-003.

My partner is also going to be showing how to tear down a Wii nunchuk.

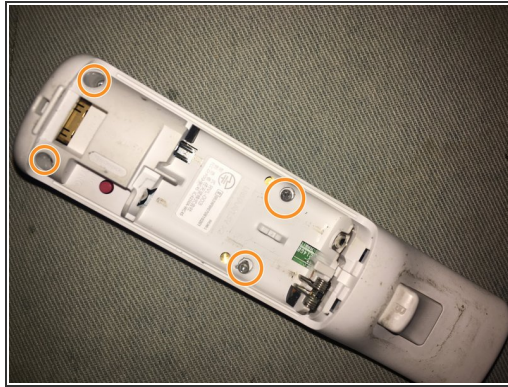
The model number of the Wii nunchuk is RVL-004.



TOOLS:

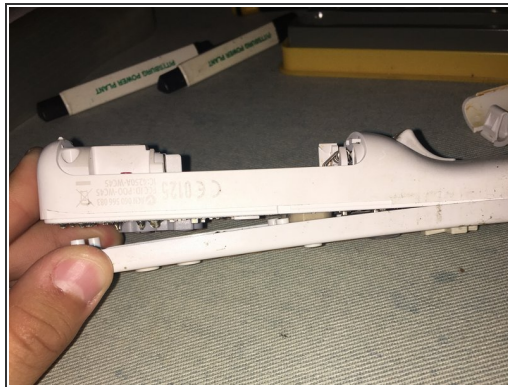
- [Spudger](#) (1)
 - [Mako Driver Kit - 64 Precision Bits](#) (1)
-

Step 1 — Nintendo Wii Remote & Wii Nunchuk Accessory Disassembly/Reassembly



- Remove the battery cover from the remote and batteries inside.
- Unscrew the four visible screws on the remote.

Step 2



- Use a tool to gently pry apart the white tabs near the top of the controller.
- Once you open up the remote, there should now be two separate pieces.
- ⓘ The tabs may break off, but the remote will still be able to function without them.


Step 3



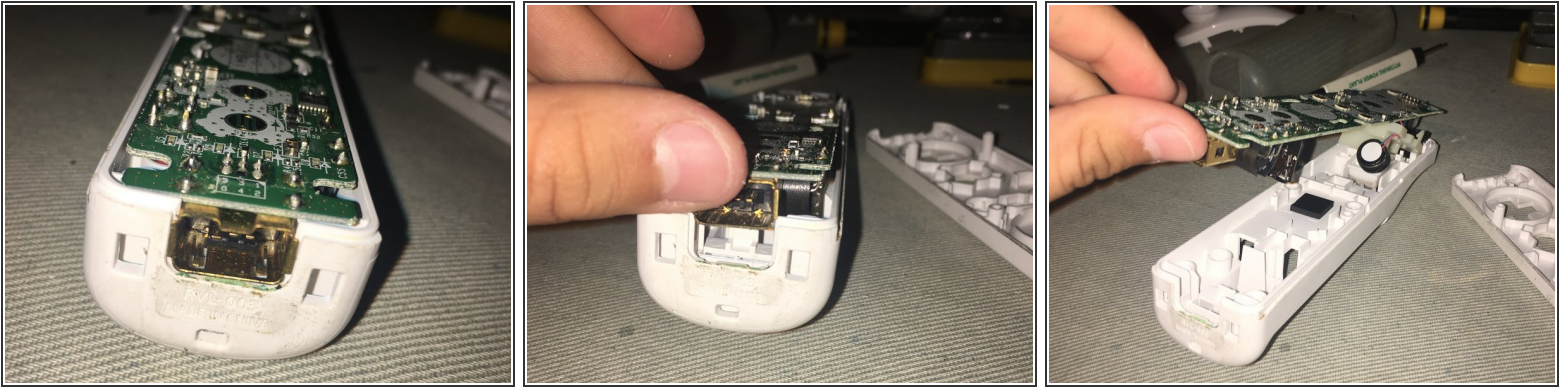
- Use a tool or your fingers to remove the speaker piece from the remote.

Step 4



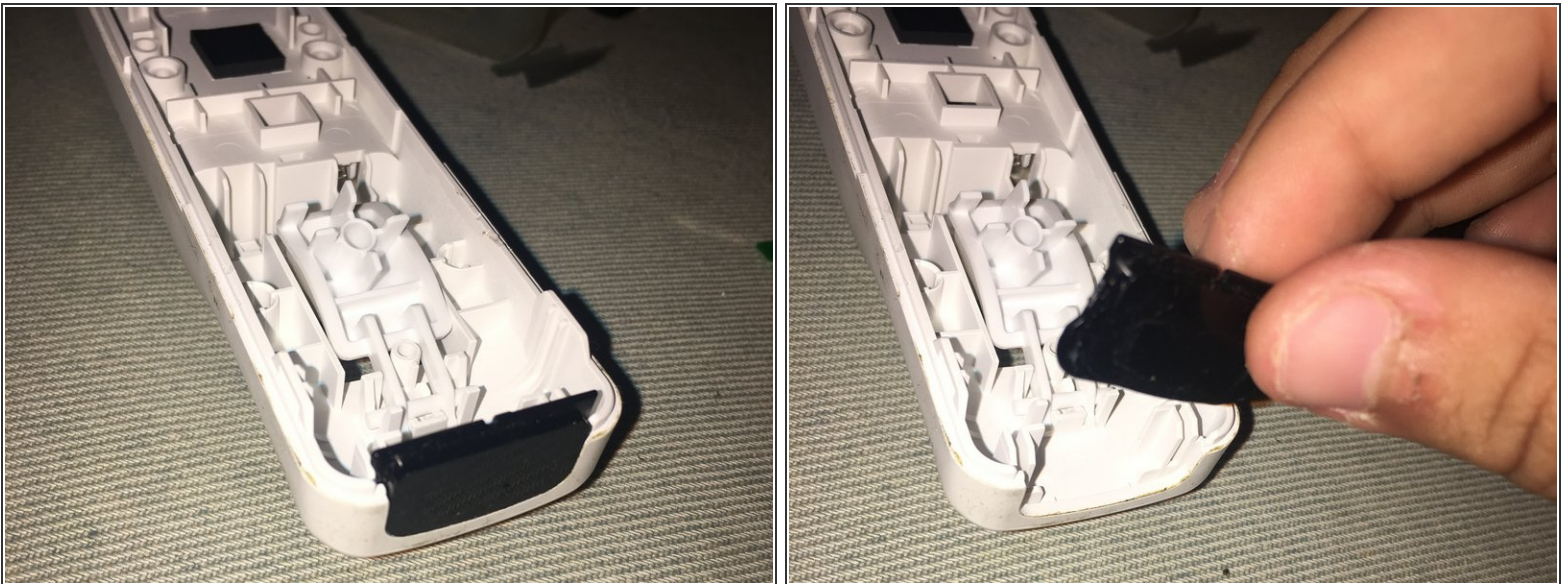
- Simply remove the rest of the buttons and the flexible plastic covering.
-  These buttons are very small and easily lost so be sure to keep them organized and close for easy access.

Step 5



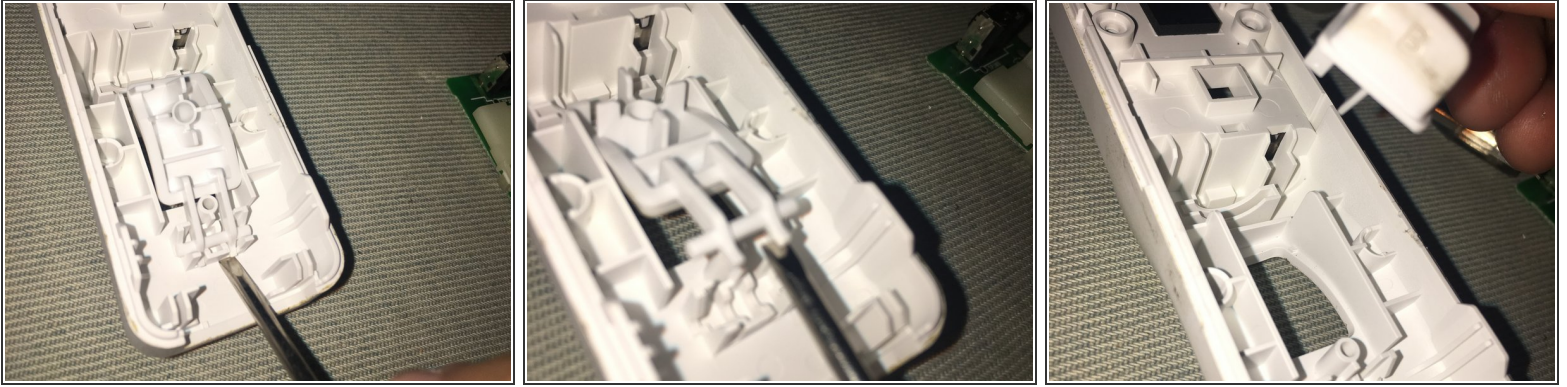
- Go back to the side of the remote with the motherboard.
 - Gently lift and remove it from the base.
- ⚠ Be gentle while pulling out, being sure not to rip off the wires from the rumble motor.

Step 6



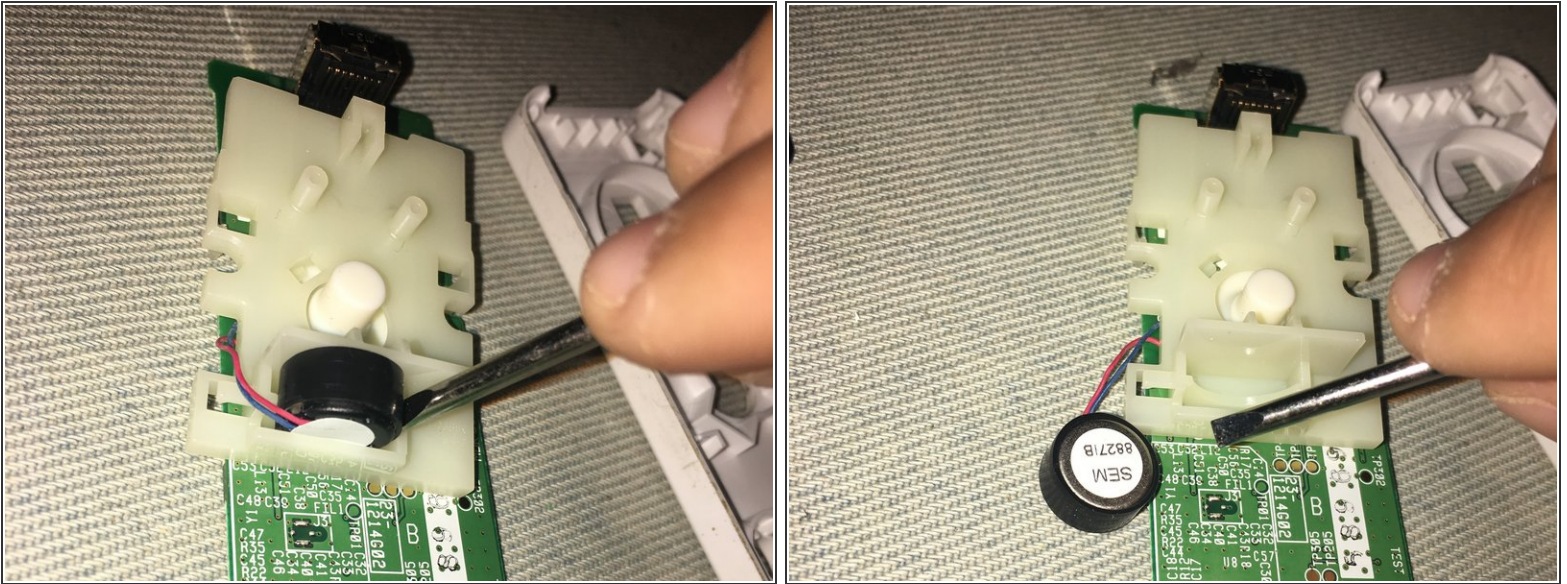
- Pull out the sensor screen.

Step 7



- Find the white tabs facing where the sensor screen was.
- Place a tool under one tab and push up until both tabs pop out of place, and remove the B trigger.

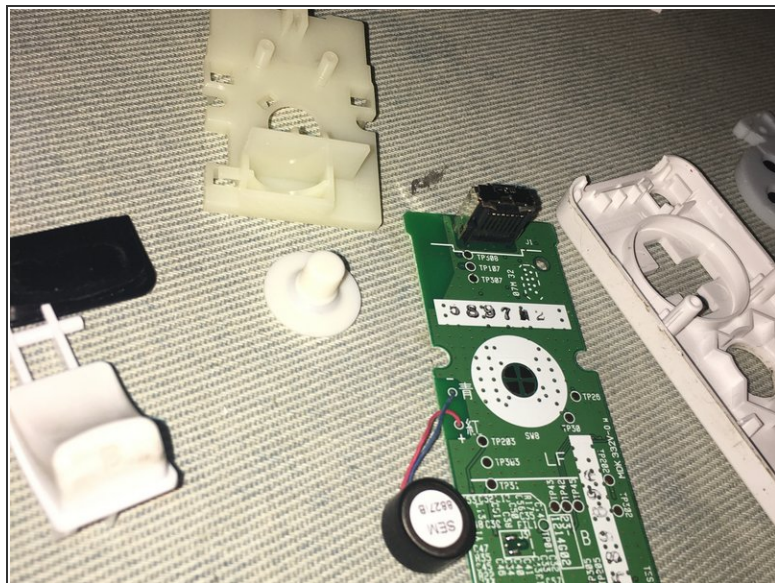
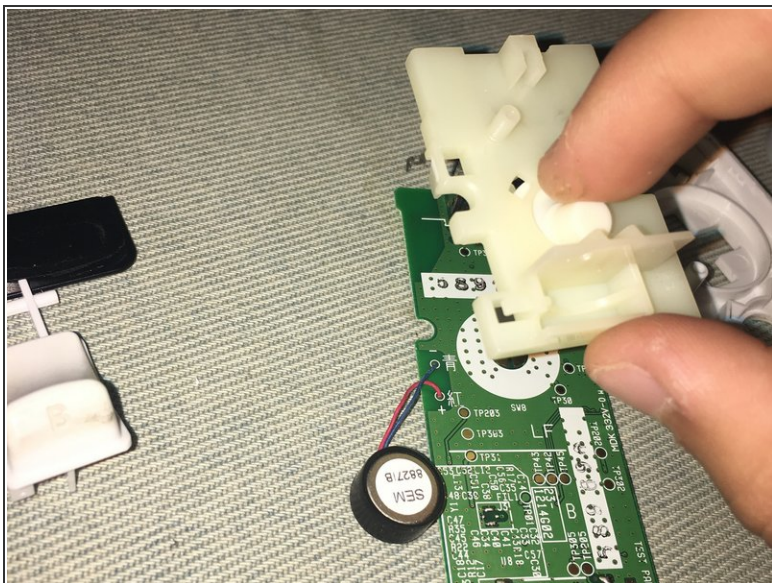
Step 8



- Use a tool and place it under the rumble motor. Gently lift and remove it from the plastic housing.

⚠ Be careful while removing. Do not remove any of the wires from the rumble motor.

Step 9



- To remove the plastic housing, you have to locate the two white tabs. Use your thumbs to gently pull them apart and remove the plastic housing.
- Remove the rubber button from the plastic housing.

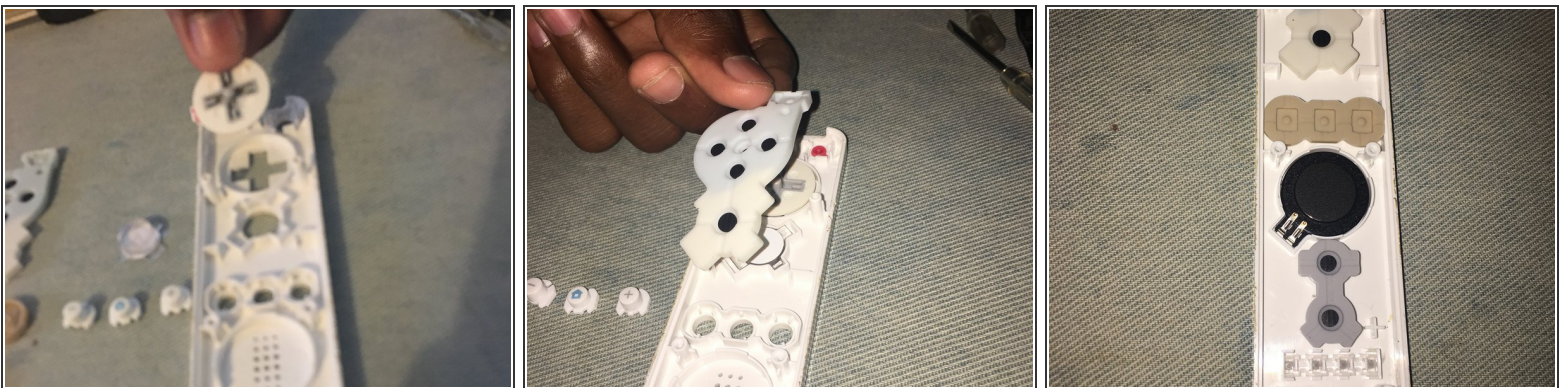
Step 10



- You should now have all the pieces detached from the Wii remote.

☑ You should have all the piece shown in the photos to the left.

Step 11



ⓘ My partner will now be putting back together the remote while only following the previous instructions I have made.

- Return the the buttons back to their original spot along with the flexible plastic covering on top.

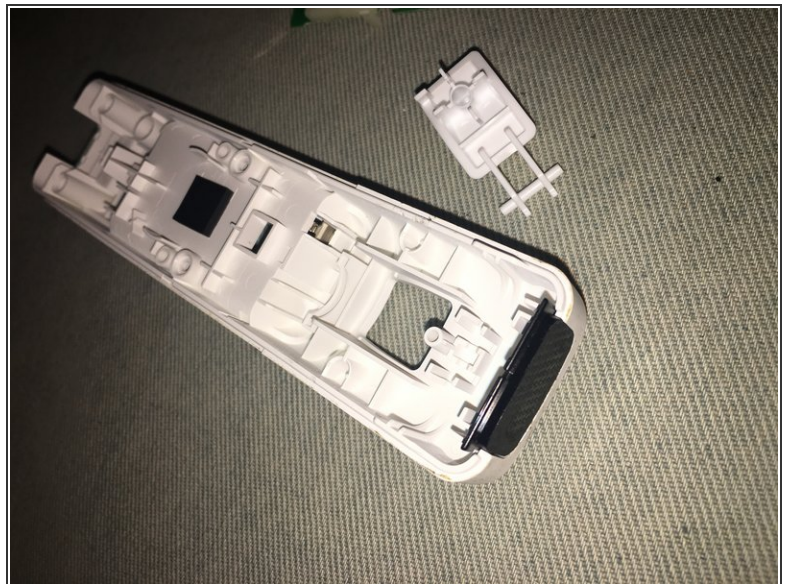
Step 12



- Place the rubber button under the plastic housing.
- Align the two white tabs with the two indents on the sides and slide the plastic housing into place.
- Put back the rumble motor back to its original spot.

⚠ Make sure you are putting the white plastic housing on the correct side of the motherboard as it was at the start.

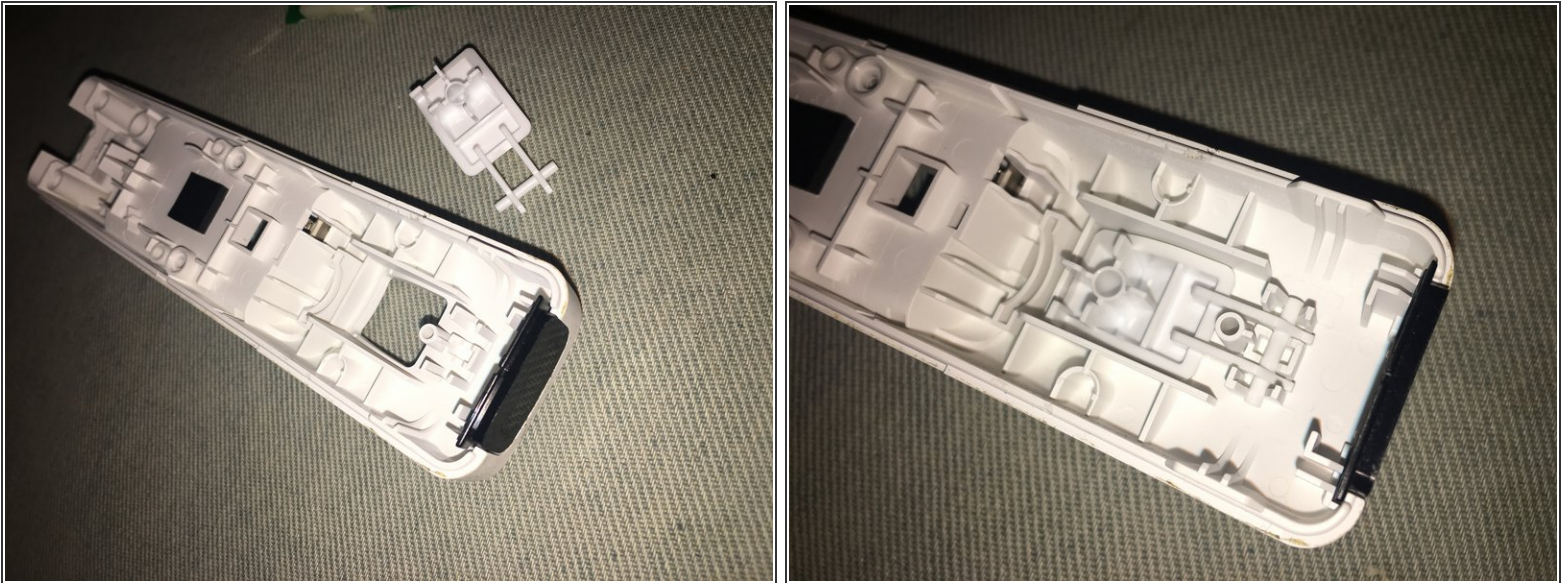
Step 13



- Return the sensor screen to its spot and slide it back into place.

⚠ Make sure the sensor screen is facing the right way.

Step 14



- Place the B trigger back into its spot and click the two white tabs into place.

Step 15



- Lay the motherboard on top of the back side of the remote and push down gently til in place.

- ☑ Be sure that the rumble motor is facing down while putting it back in place.

Step 16



- Lay the side of the remote with the motherboard on top of the side with the buttons.
- Align the sides and press together until firmly in place.
- Screw back in the screws.

Step 17 — Now for the Wii Nunchuk



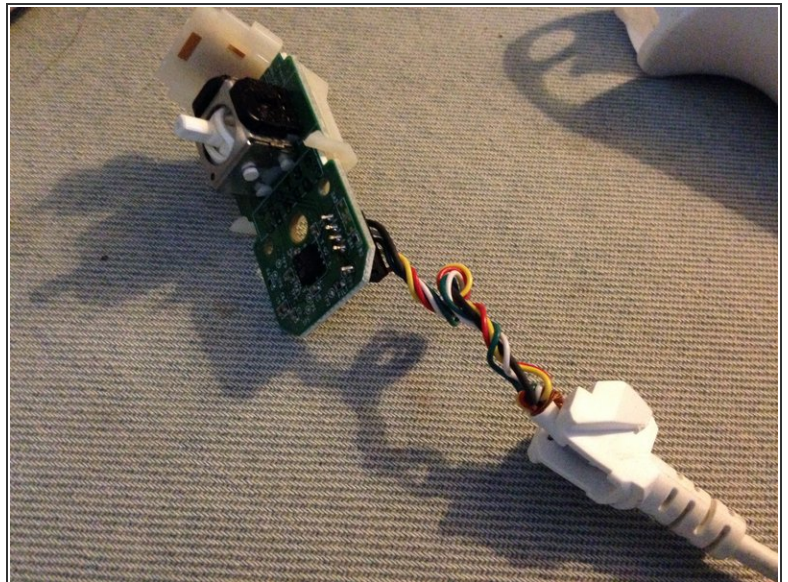
- there are two small screws that need to be unscrewed on the bottom of the remote.

Step 18



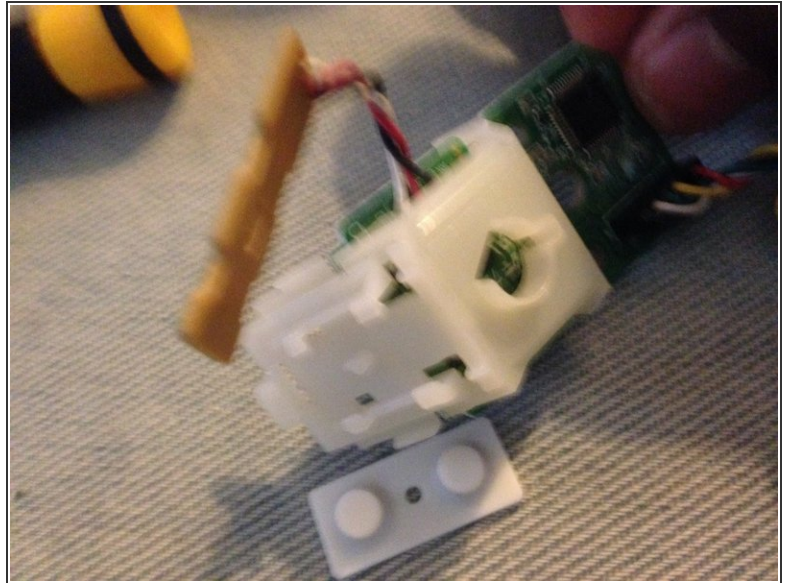
- Once the screws are removed, you can pop the top off.
- Next take the thumb stick and very gently take it off.

Step 19



- The wire that plugs into the actual remote needs to be pulled apart from the whole nunchuk.
- ✦ The wires can be by its self without the plastic controller housing.

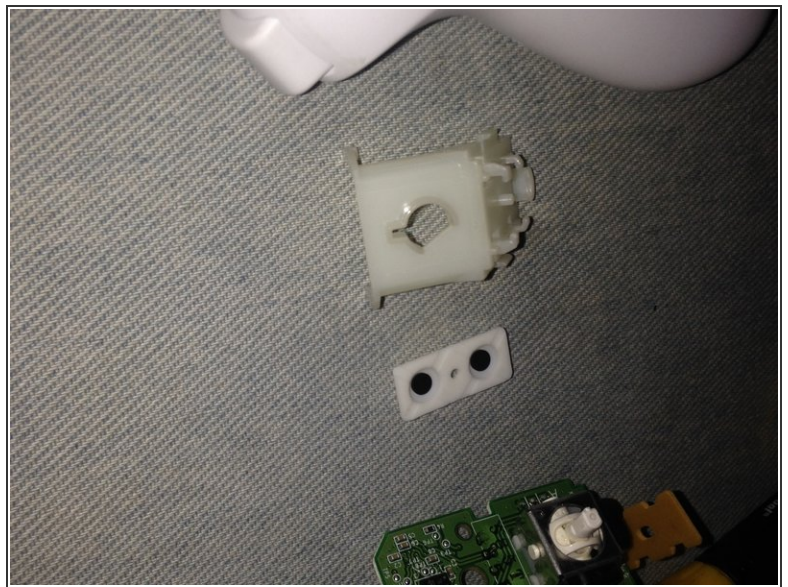
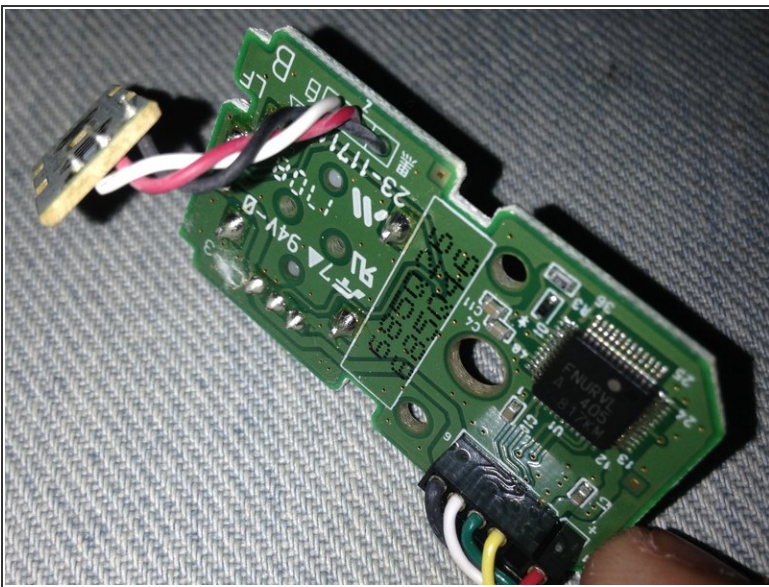
Step 20



⚠ Flip the wires over and remove the shoulder buttons (white plastic).

- It'll be easier to slide the other piece out to so make sure to gently slide it out.

Step 21



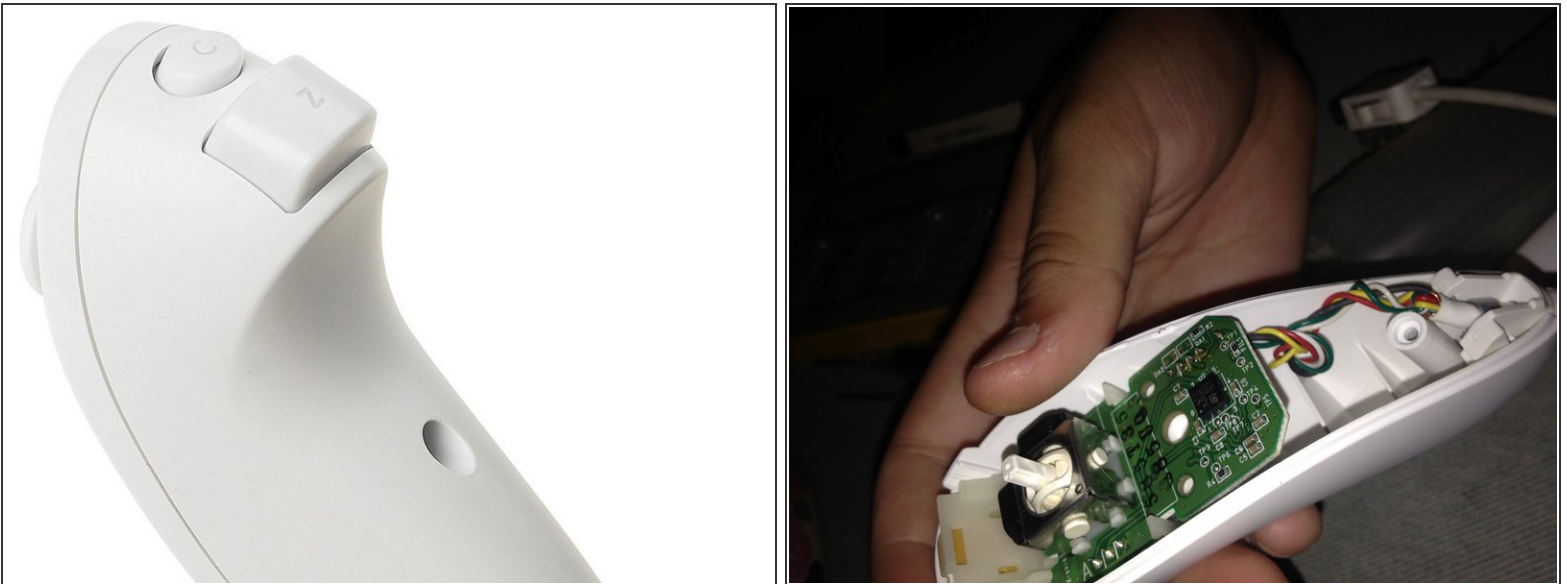
- Then remove the plastic that connects the sensor and the shoulder buttons.

Step 22



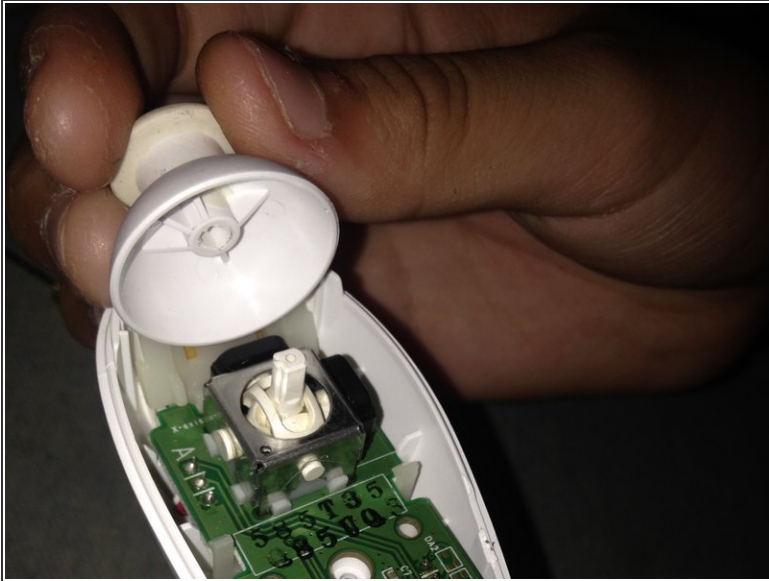
- Now start to attach all of the pieces back starting with the hard plastic first.
- Make sure not to force the sensor in the spot and slide it upwards.
- The shoulder buttons are easy to put in but don't push it.
- Example of my partner.

Step 23



- Be careful when putting the wires back in because they are easy to fall out.

Step 24



- She then attaches the analog stick to get it going again.

Step 25



- Lastly she easily popped the top back on and screwed the bottom to back on and got it to work as it used to.

To reassemble your device, follow these instructions in reverse order.