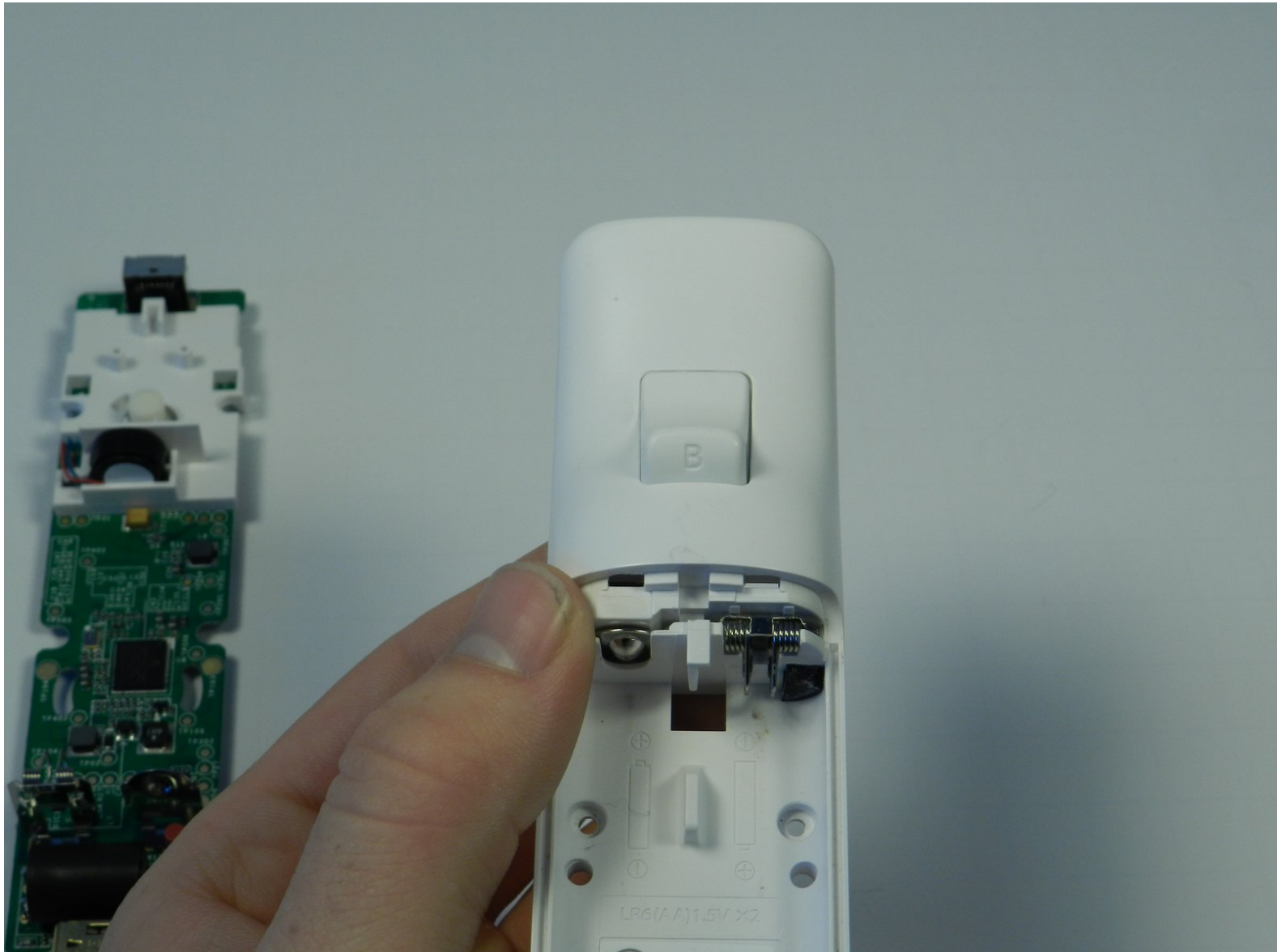




Nintendo Wii Remote B Trigger Button Replacement

Remove the B button from your Nintendo Wii Remote.

Written By: Emily



INTRODUCTION

The B button can malfunction or get misaligned due to improper or over use. Installing the B button requires disassembly of the entire device. This means removing the front cover plate, and the motherboard.



TOOLS:

- [iFixit Opening Tools](#) (1)
 - [Y1 Tri-point Screwdriver](#) (1)
 - [Spudger](#) (1)
-

Step 1 — Front Cover Plate and Batteries



- Flip the Wii Remote over so the battery cover faces you.
- Push up on the bottom tab.
- Remove the battery cover.

Step 2



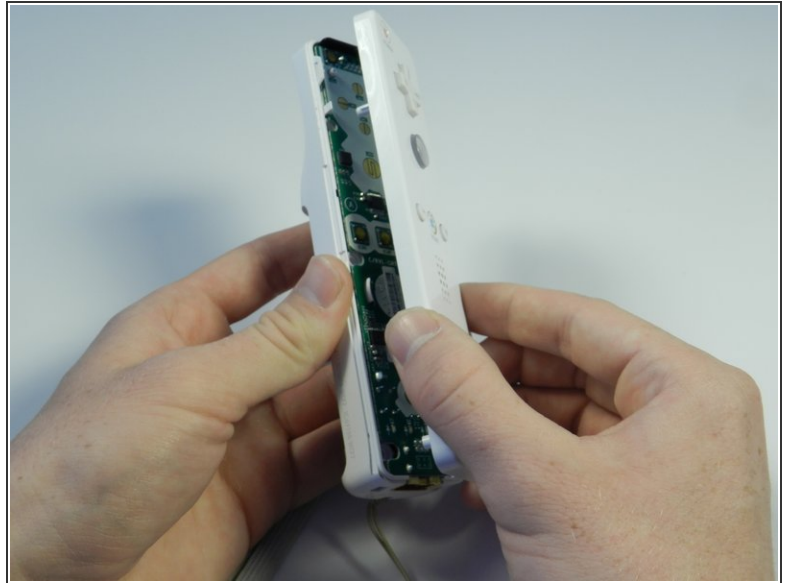
- Remove the first battery by pressing down on the positive end and pulling the battery out.
- Remove the second battery by pushing up on the positive end and pulling the battery out.

Step 3



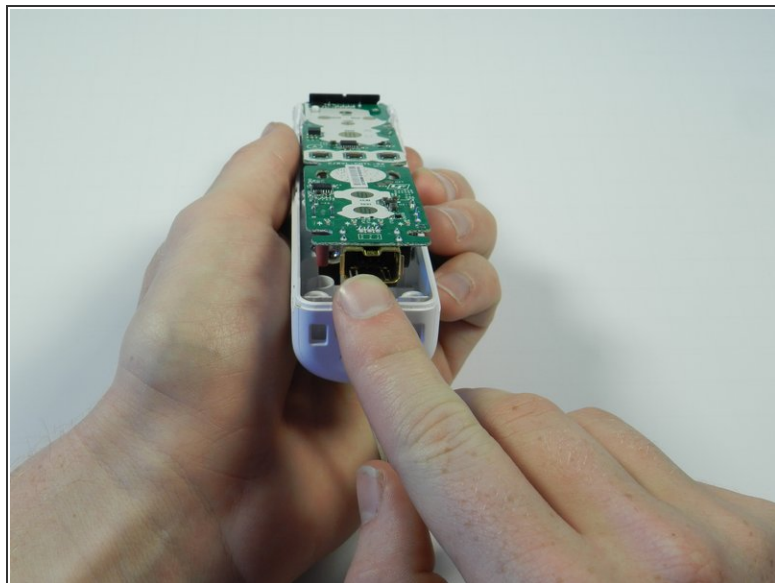
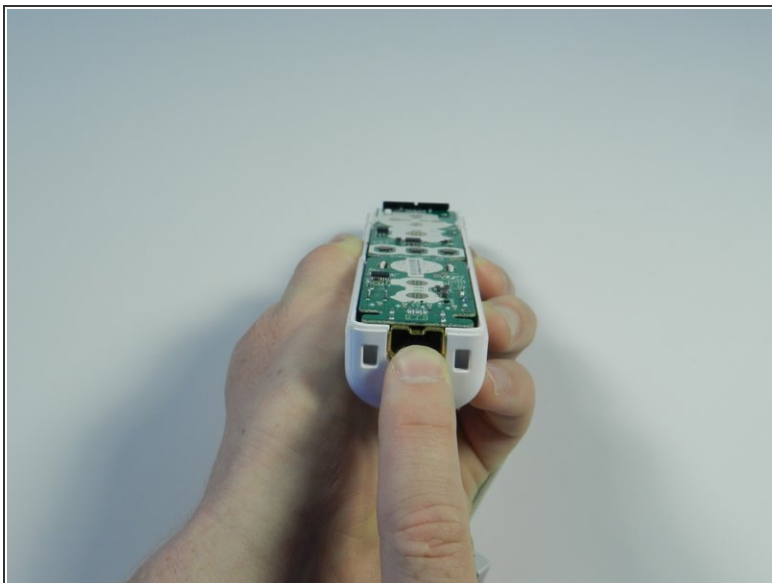
- Using a tri-point Y1 Screwdriver, remove the two center 7mm screws by turning them counterclockwise.
- Repeat with the two bottom screws.

Step 4




- With the flat end of a spudger, gently apply pressure to the tabs located on left side of the controller.
 - ⓘ These tabs are breakable. However, if the tabs are broken the controller will still function.
- Open the front plate like a book.
 - ⚠ Small parts may fall out as you open the front plate.

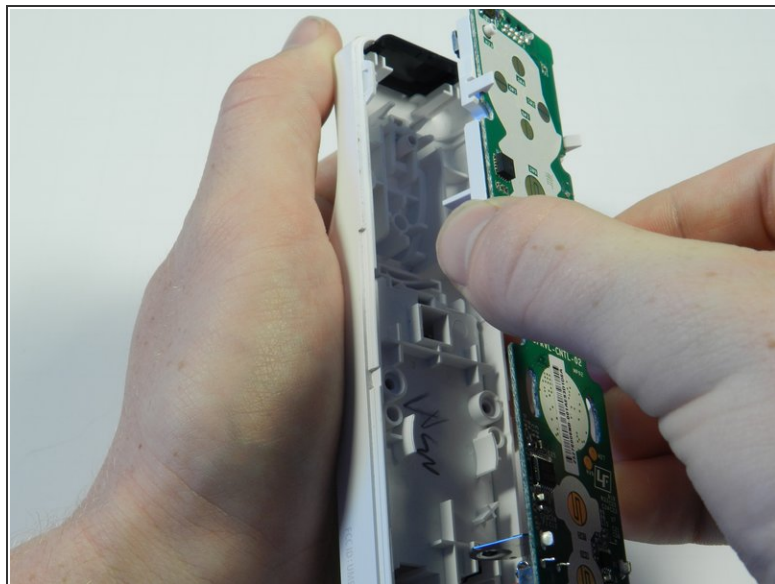
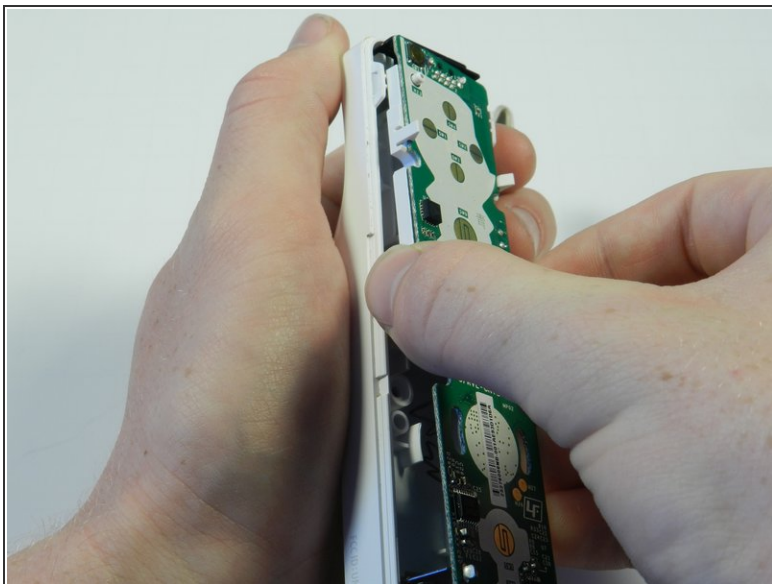
Step 5 — Motherboard



- Using the connector port, gently lift the motherboard about 2 cm from the base.

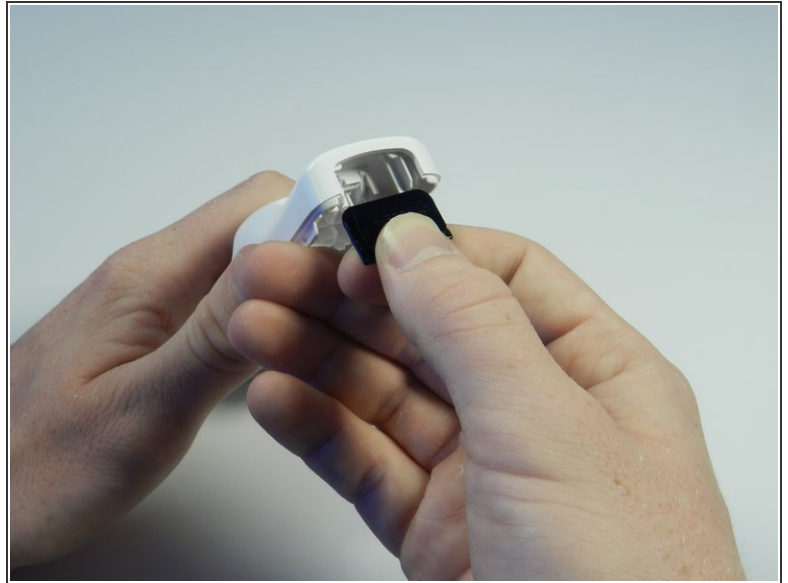
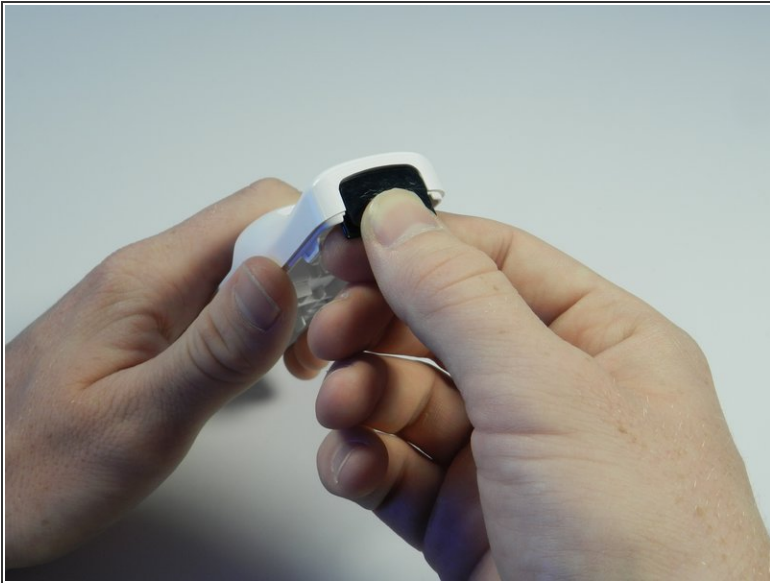
 Electrostatic discharge may damage the device. Be careful and avoid touching the electronic components as much as possible.

Step 6



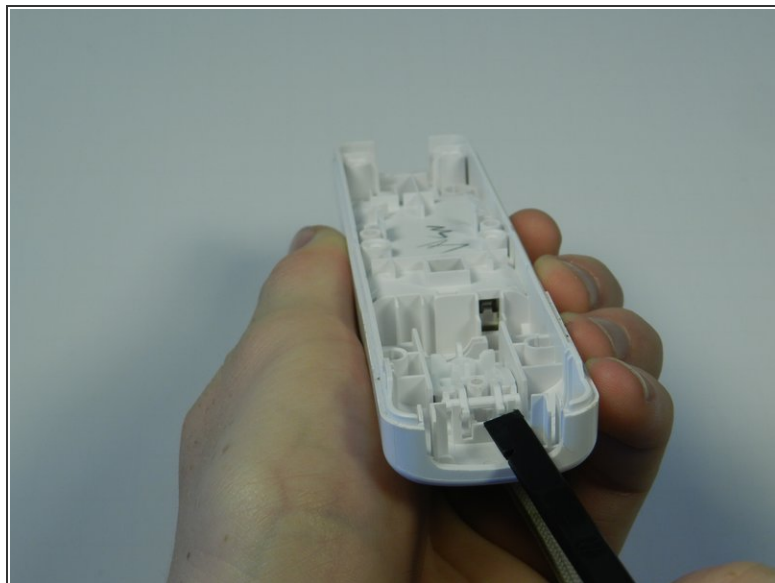
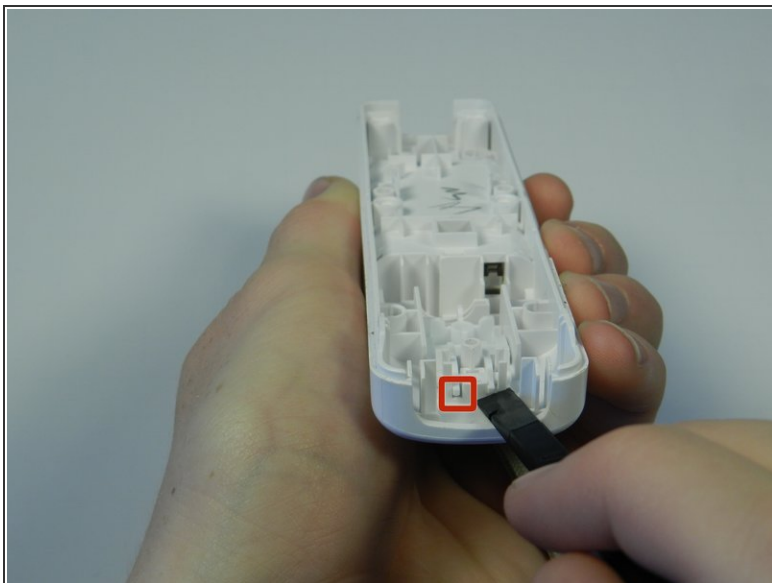
- Grasp the edges of the motherboard and pull it straight away from the case.

Step 7 — B Trigger Button



- Locate the black sensor screen found at the bottom end of the Wii remote.
- Grip the free edge of the black sensor screen and gently pull it down to remove from the Wii control.

Step 8



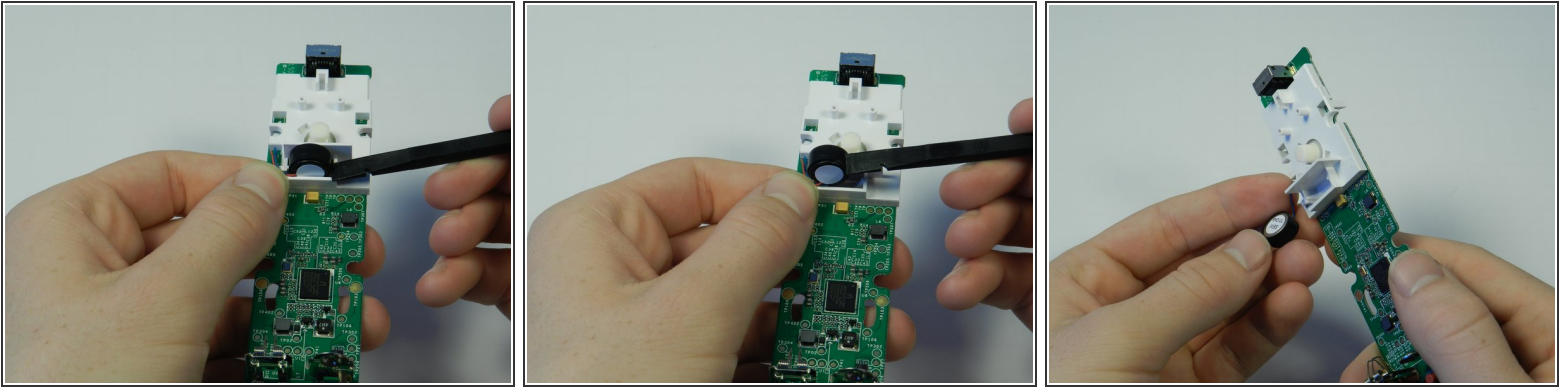
- Find the two small tabs near the front end of the white plastic housing.
- Place the flat end of the spudger tool under one tab and lightly push up until the tabs pop out of place.

Step 9



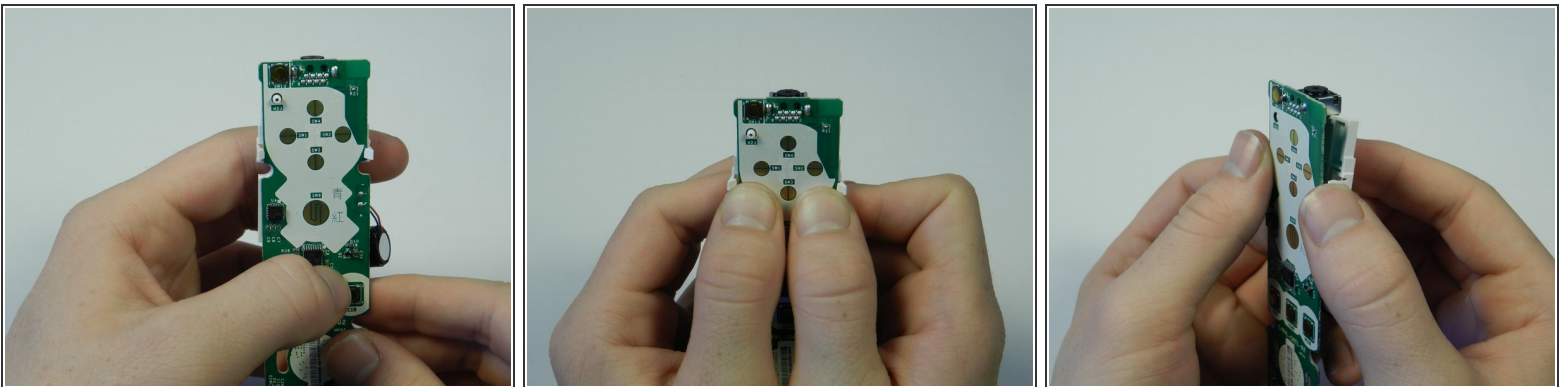
- Flip the remote over and the plastic B trigger will fall out.
- ⓘ Catch the plastic trigger so it does not get lost.

Step 10



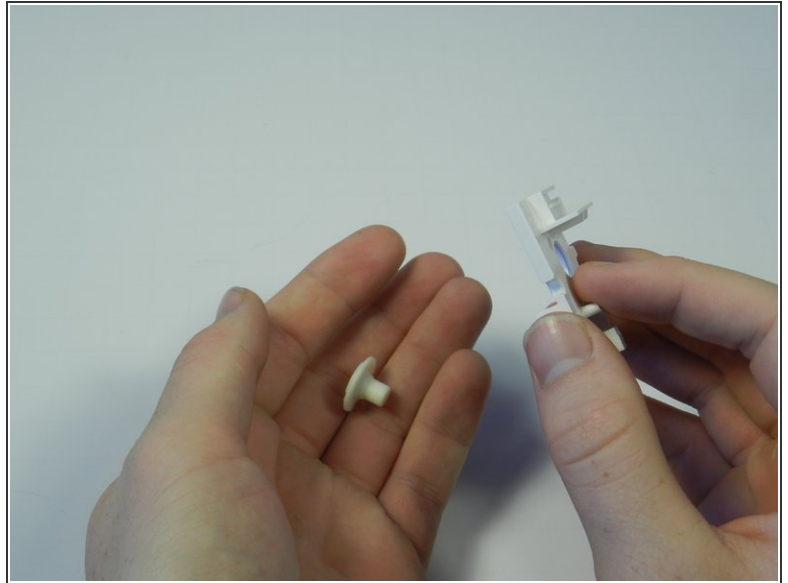
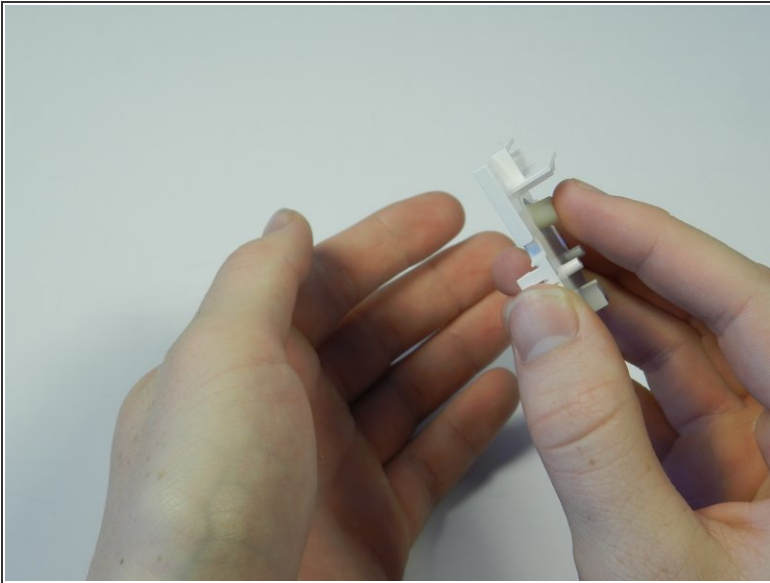
- Flip the motherboard so that the rumble motor and the white plastic housing face up.
- Place the flat end of the spudger tool under the round rumble motor and lightly push up.
- Tilt the motherboard to the left and the rumble motor will fall out of the white housing.
- ⓘ Do not pull the rumble motor out, this could cause the wires to rip from the motherboard.

Step 11



- Flip the motherboard over and locate the two white tabs at the top the plastic housing.
- Place both thumbs on the inside of the tabs and push the tabs outward.
- Use the inner sides of your thumbs to separate the motherboard from the plastic housing.

Step 12



- Gently push the rubber button out of the plastic housing.
 - ⓘ The rubber button is bouncy, so be cautious after pushing it out.

To reassemble your device, follow these instructions in reverse order.