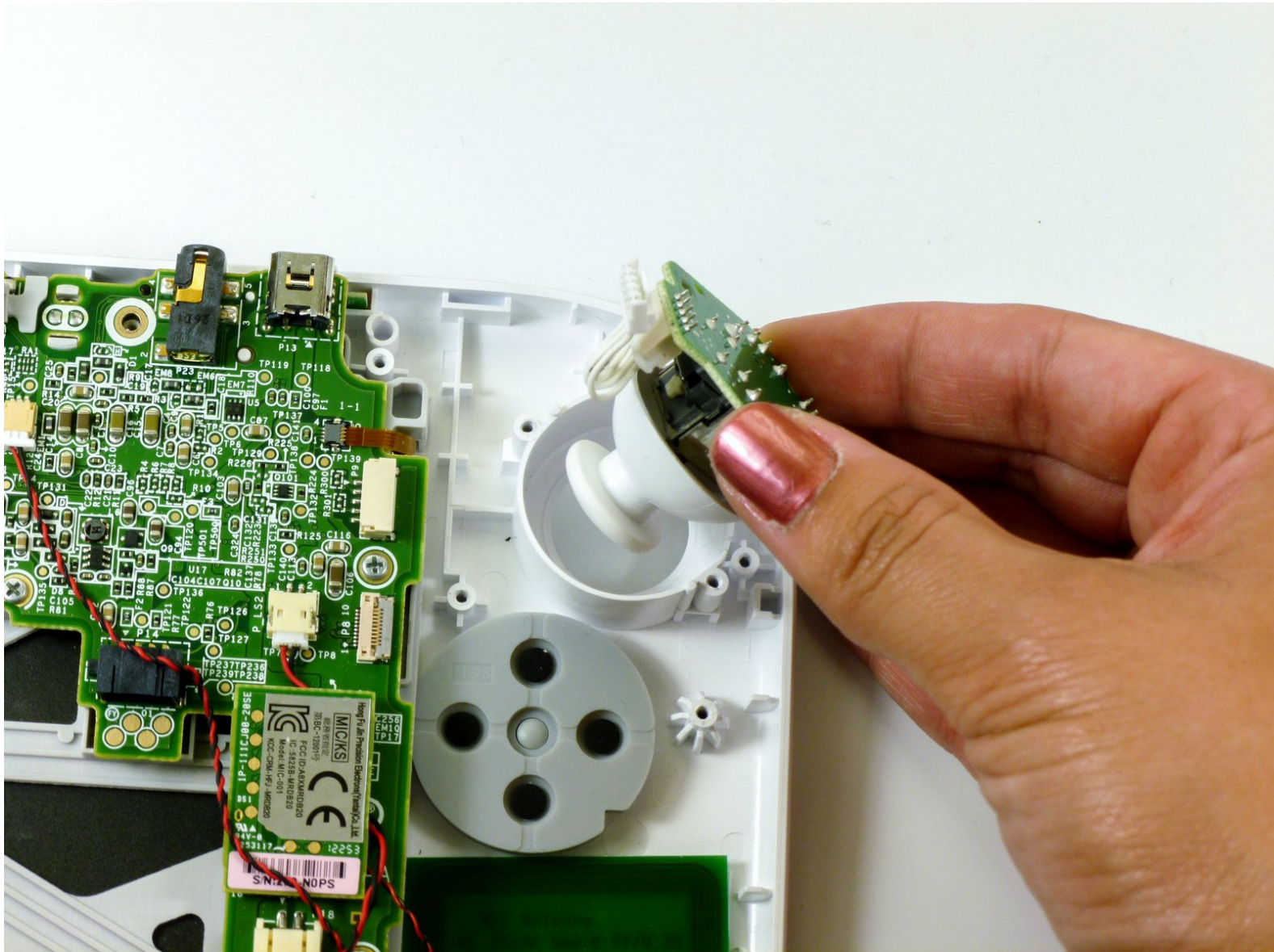




Nintendo Wii U GamePad Analog Stick Replacement

Replace the analog stick.

Written By: Kim Arre



INTRODUCTION

Use this guide to replace the analog stick in your Nintendo Wii U GamePad.



TOOLS:

- [Phillips #0 Screwdriver](#) (1)
- [Phillips #00 Screwdriver](#) (1)
- [Tri-point Y0 Screwdriver](#) (1)
- [Y1 Tri-point Screwdriver](#) (1)



PARTS:

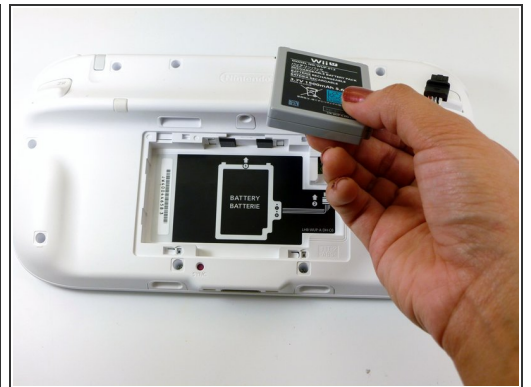
- [Nintendo Wii U GamePad Joystick](#) (1)
- [Nintendo Wii U GamePad Right Joystick Board](#) (1)
- [Nintendo Wii U GamePad Left Joystick Board](#) (1)

Step 1 — Battery



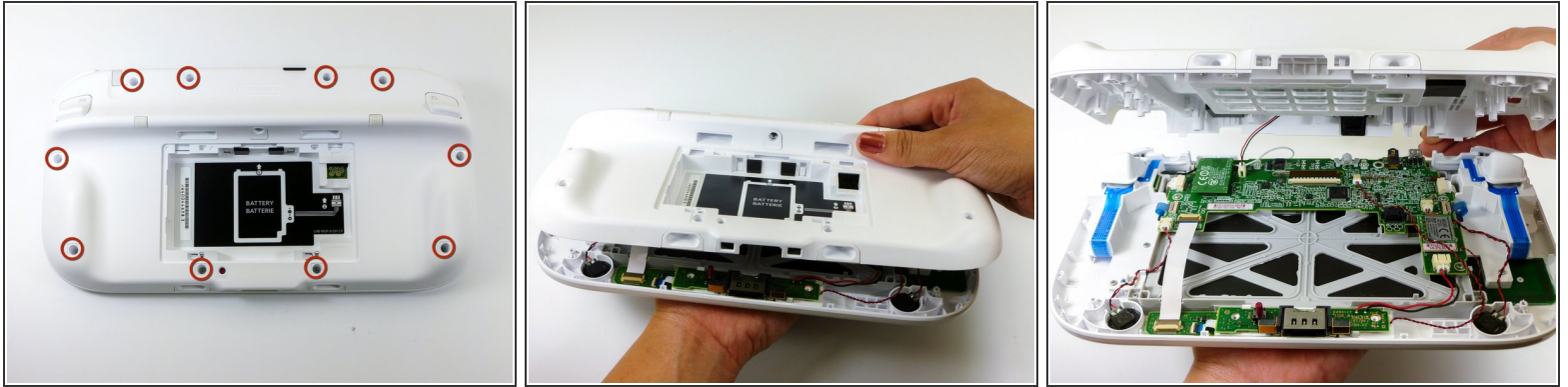
- Face the GamePad down and unscrew the two Phillips #00 screws which are attached to the battery cover.
- Lift up and remove the battery cover.

Step 2



- With your finger on the battery connector, pull downwards toward the base of the GamePad to disconnect it.
- Pull upwards from the bottom of the battery to release it.

Step 3 — Outer Case

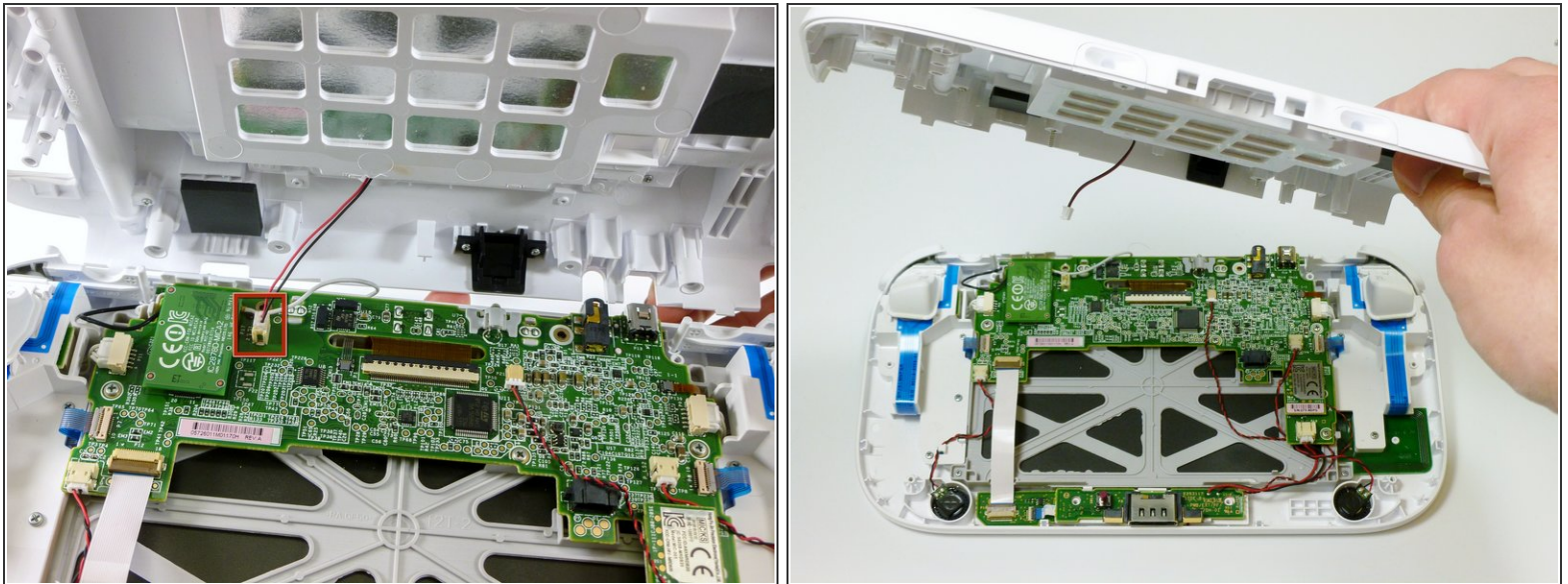


- Remove the ten 8.9mm Tri-wing Y1 screws hidden underneath square stickers.

- Lift up the back plate.

⚠ The back plate is still connected by a cable to the motherboard.

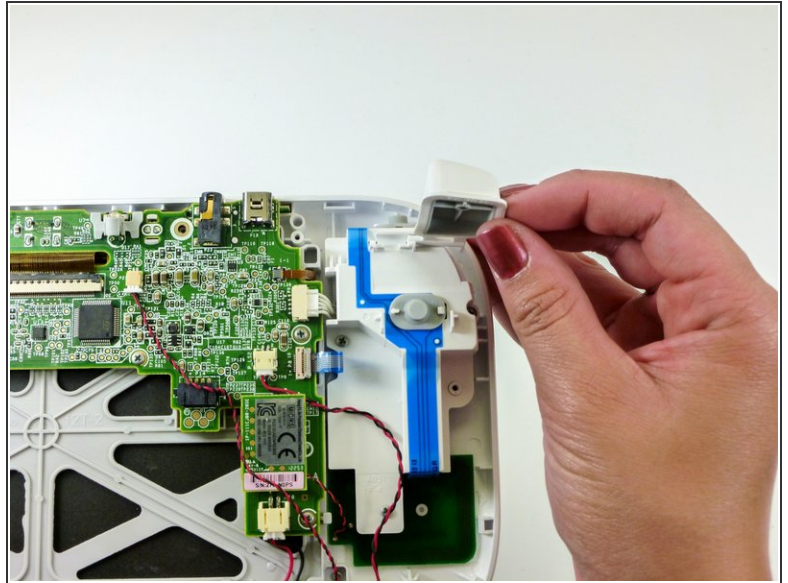
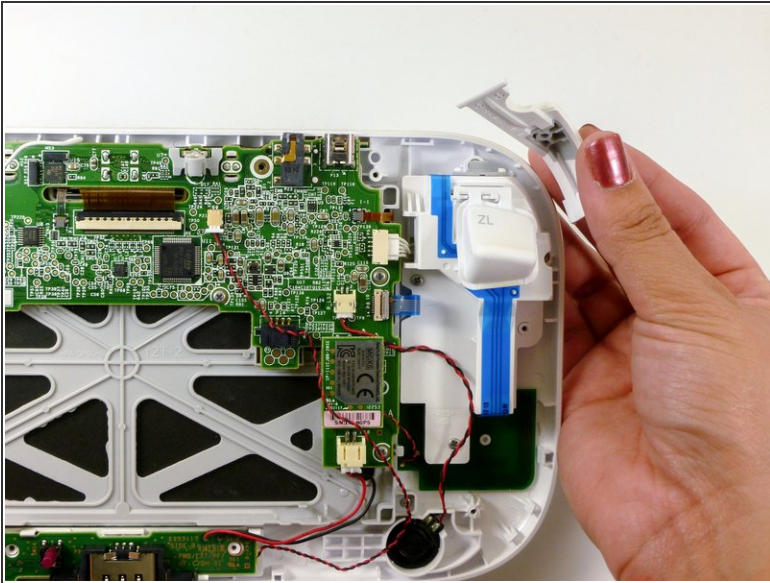
Step 4



- Unplug the connector that connects the back plate to the motherboard.

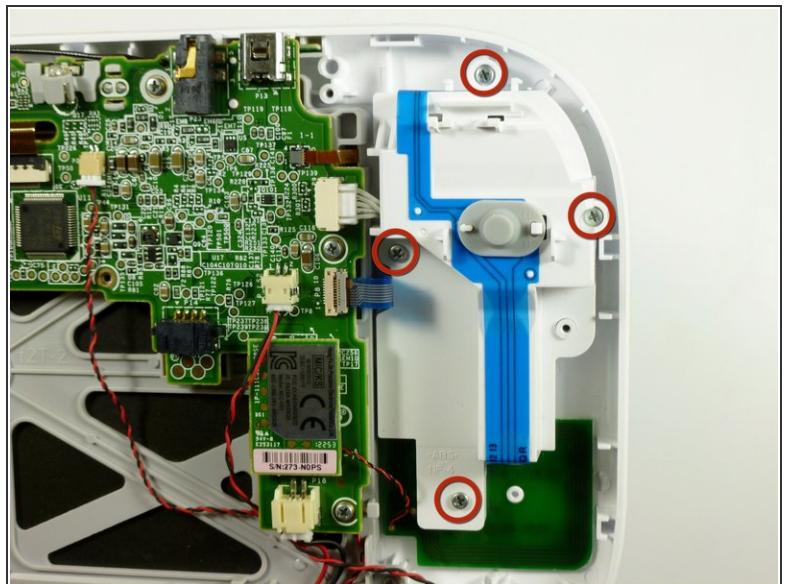
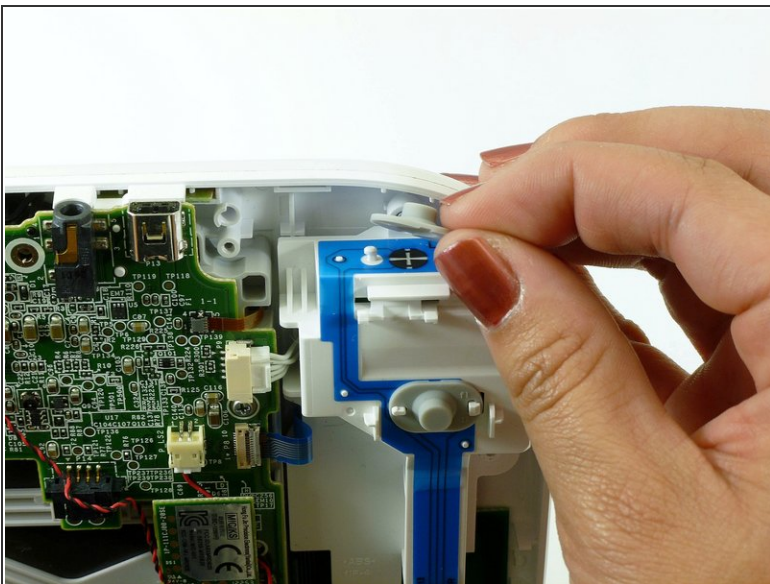
- Remove the back plate.

Step 5 — Analog Stick



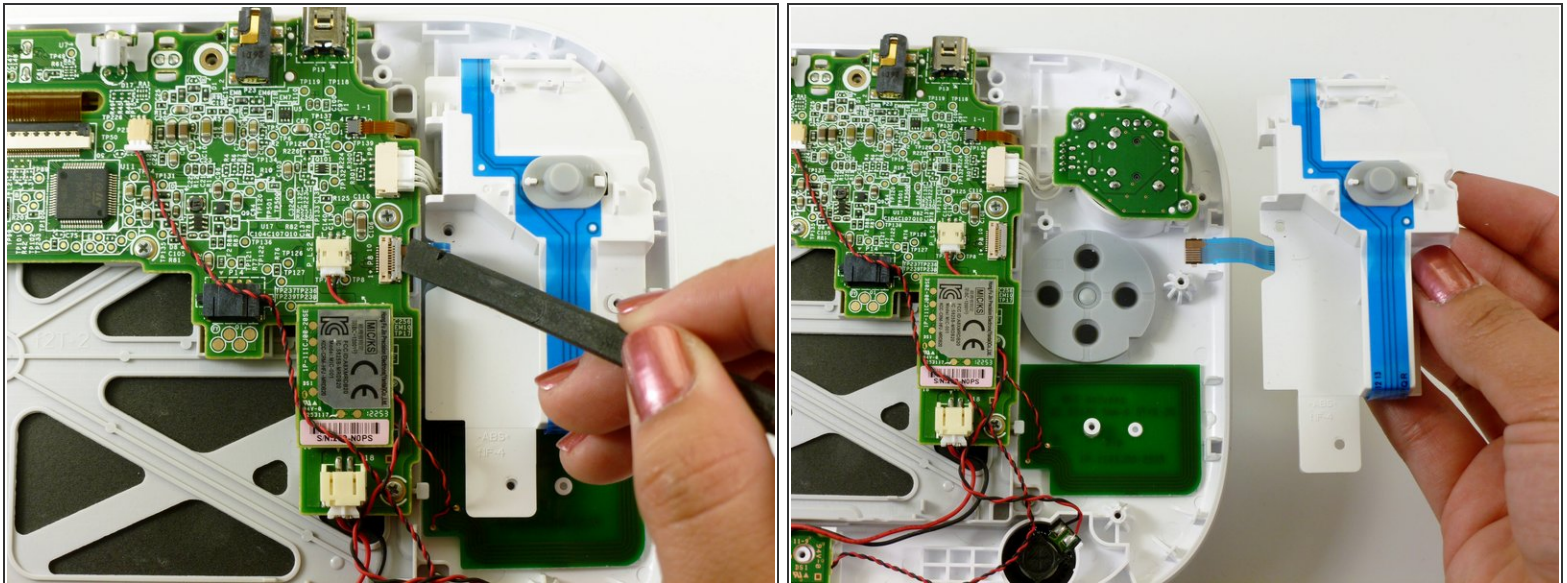
- Take out the left and right shoulder buttons in the upper corners.
- Remove the ZR and ZL trigger buttons by lifting up and sliding outward.

Step 6



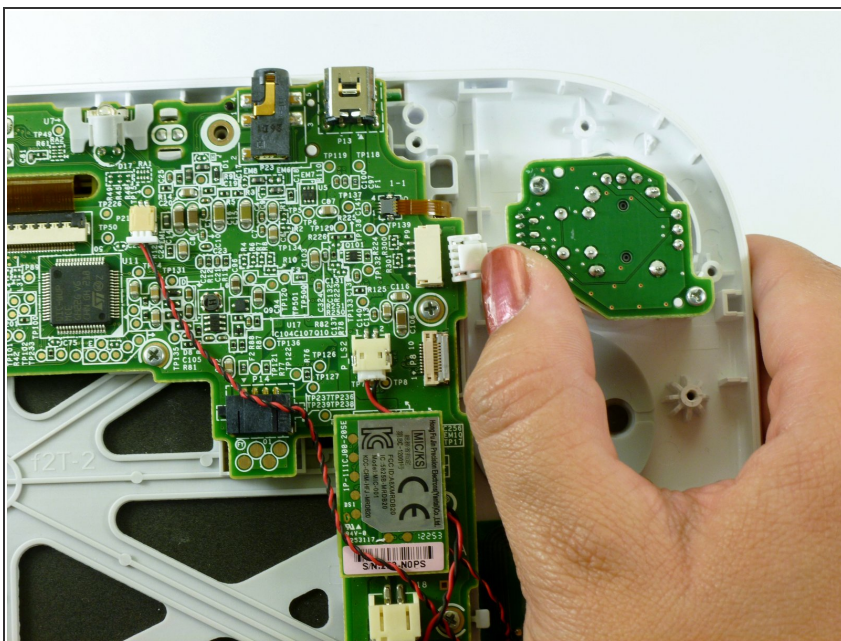
- Remove the top rubber cover by pulling it off of its mounts to access one of the mounting screws.
- Remove the four 5.2mm Phillips #0 screws.

Step 7



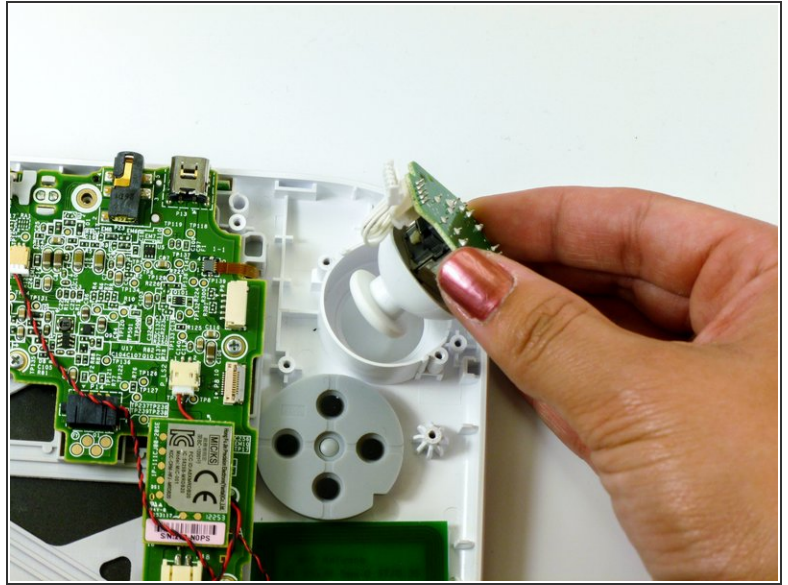
- Use a spudger to lift the tab which releases the blue ribbon cable.
- Remove the analog stick and button cover.

Step 8



- Use your thumb and push the connector towards the rightmost edge to disconnect the analog stick cable connector.

Step 9



- Remove the two 9.0mm Tri-wing Y0 screws.
- Lift out the analog stick.

To reassemble your device, follow these instructions in reverse order.