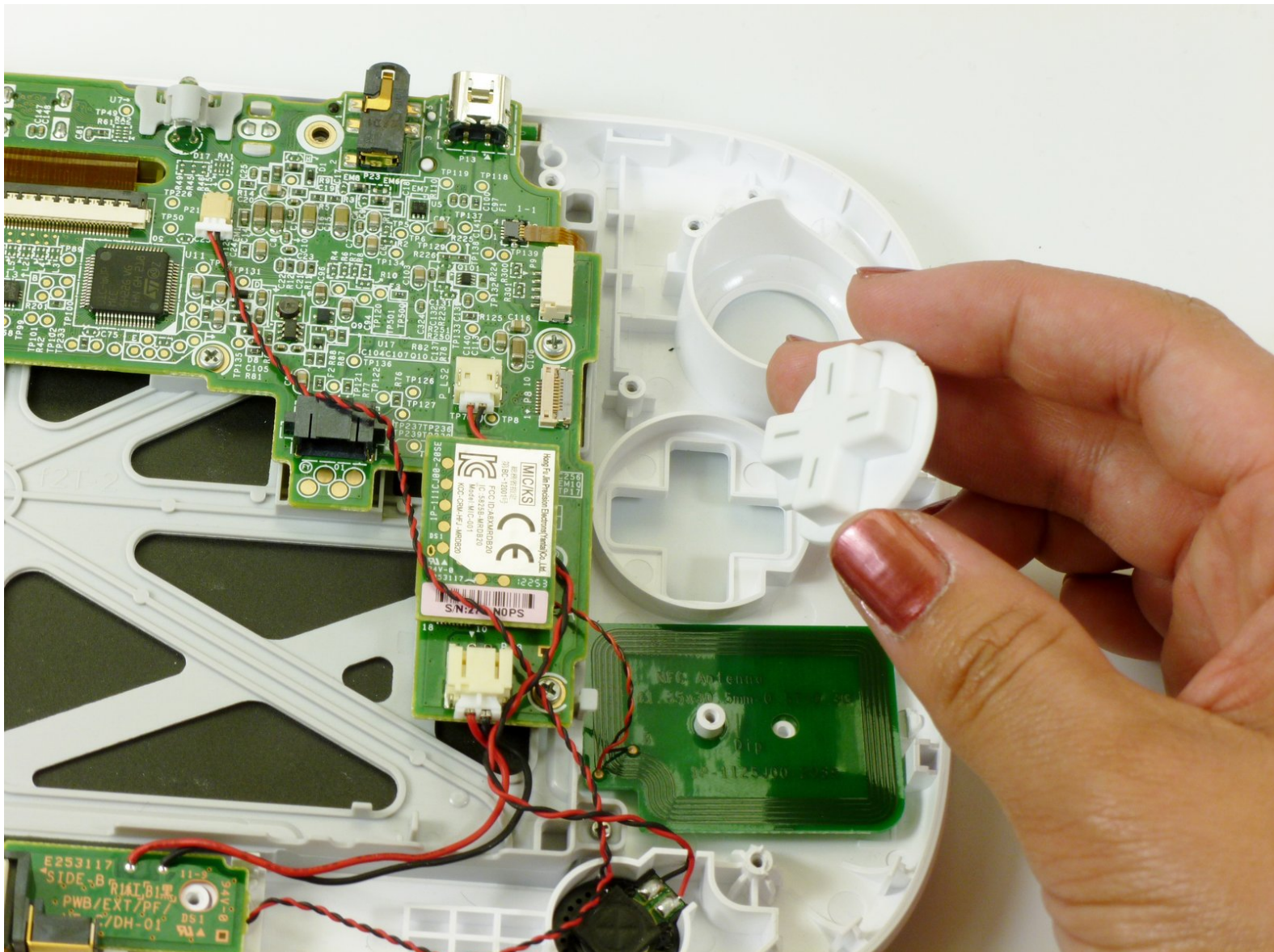




# Nintendo Wii U GamePad Directional Pad Buttons Replacement

Replace the directional pad buttons.

Written By: Kim Arre



# INTRODUCTION

Use this guide to replace the directional pad buttons on your Nintendo Wii U GamePad.



## TOOLS:

- [Phillips #00 Screwdriver](#) (1)
- [Tri-point Y0 Screwdriver](#) (1)
- [Y1 Tri-point Screwdriver](#) (1)

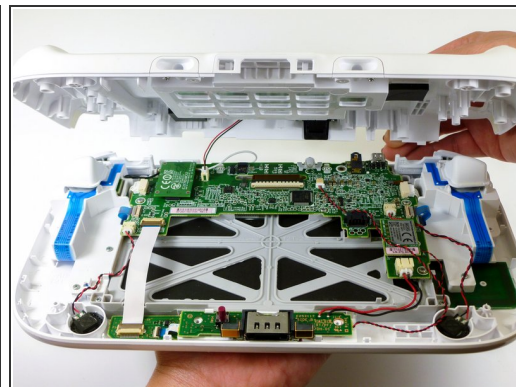
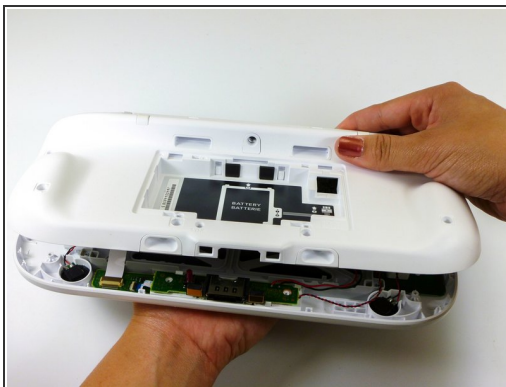
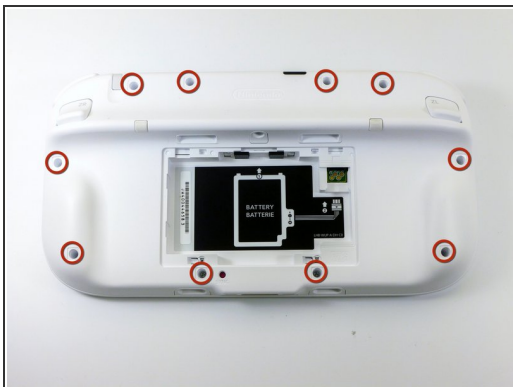


## PARTS:

- [Nintendo Wii U GamePad D-Pad Flex Cable](#) (1)



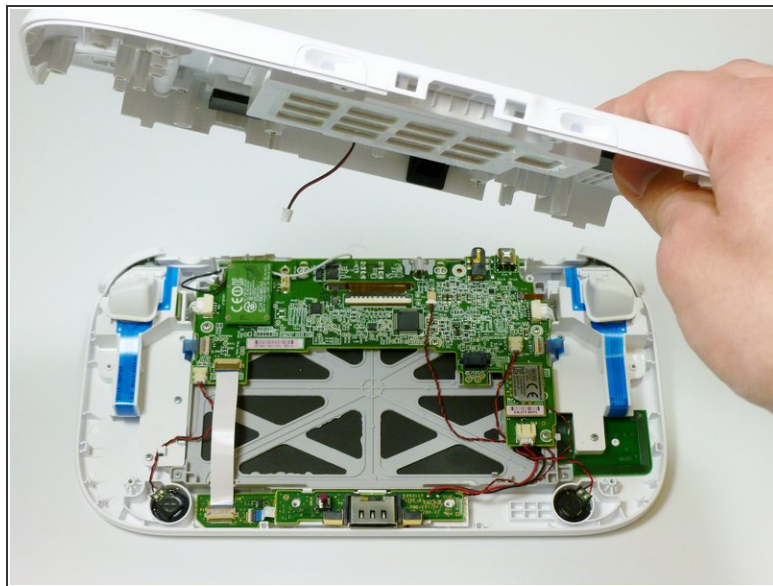
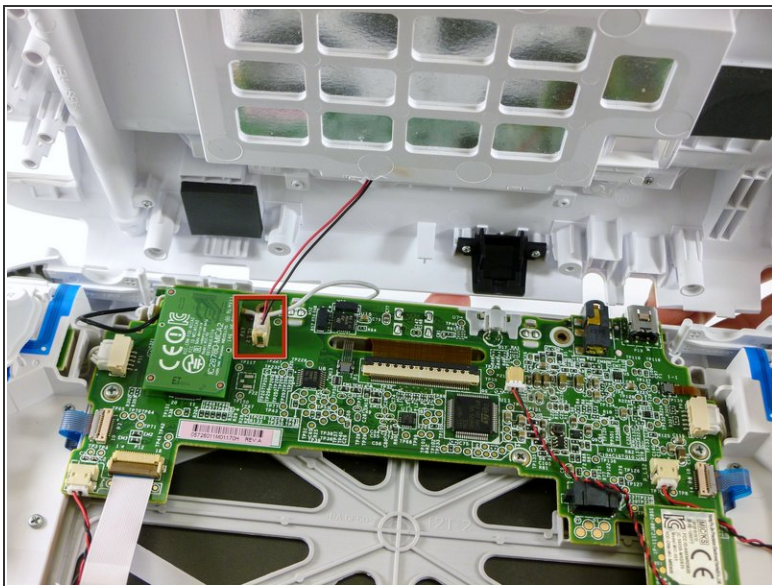
## Step 1 — Outer Case



- Remove the ten 8.9mm Tri-wing Y1 screws hidden underneath square stickers.
- Lift up the back plate.

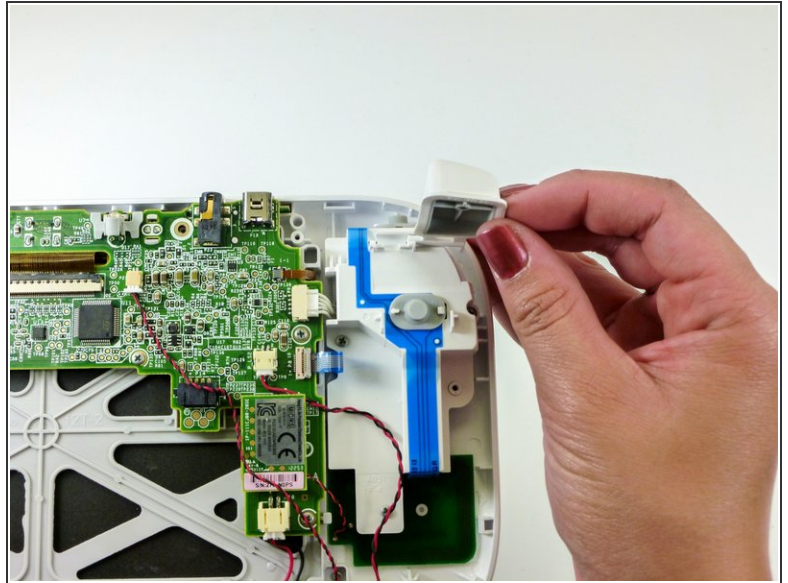
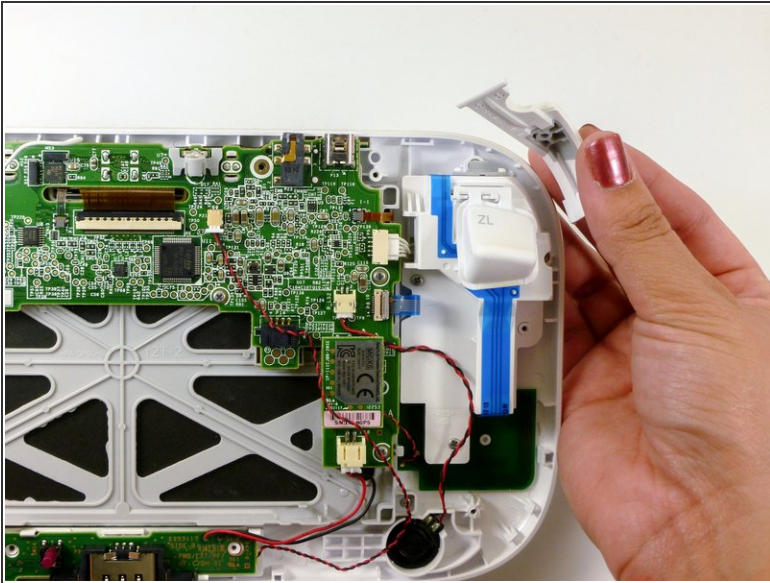
⚠ The back plate is still connected by a cable to the motherboard.

## Step 2



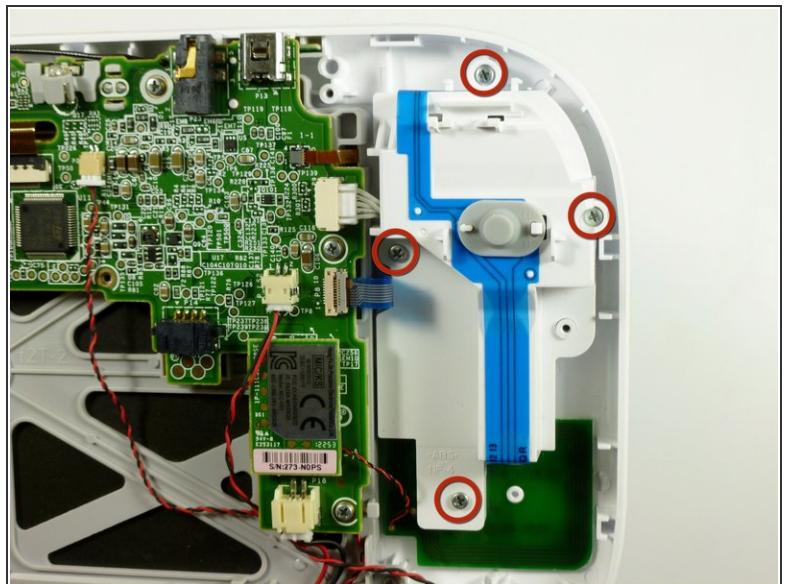
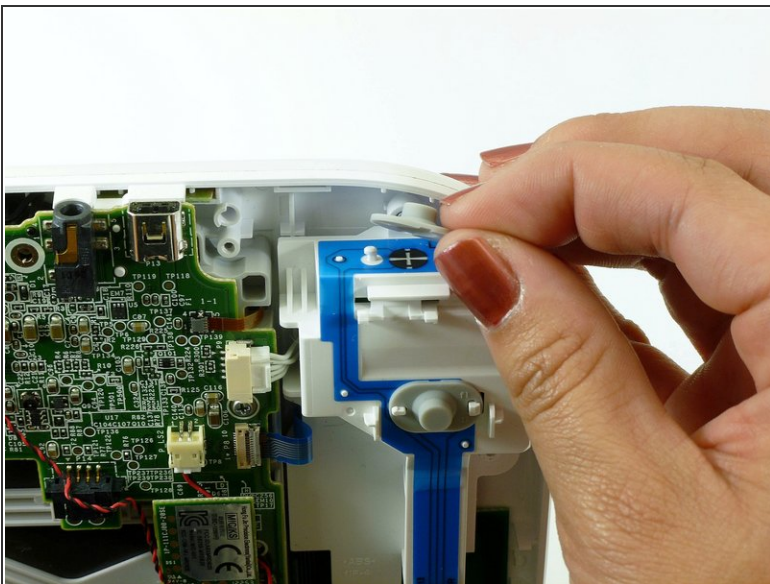
- Unplug the connector that connects the back plate to the motherboard.
- Remove the back plate.

### Step 3 — Analog Stick



- Take out the left and right shoulder buttons in the upper corners.
- Remove the ZR and ZL trigger buttons by lifting up and sliding outward.

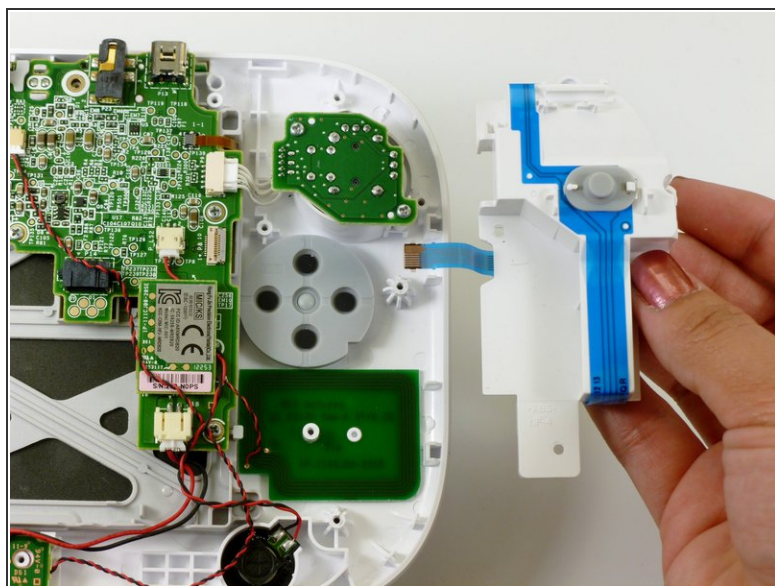
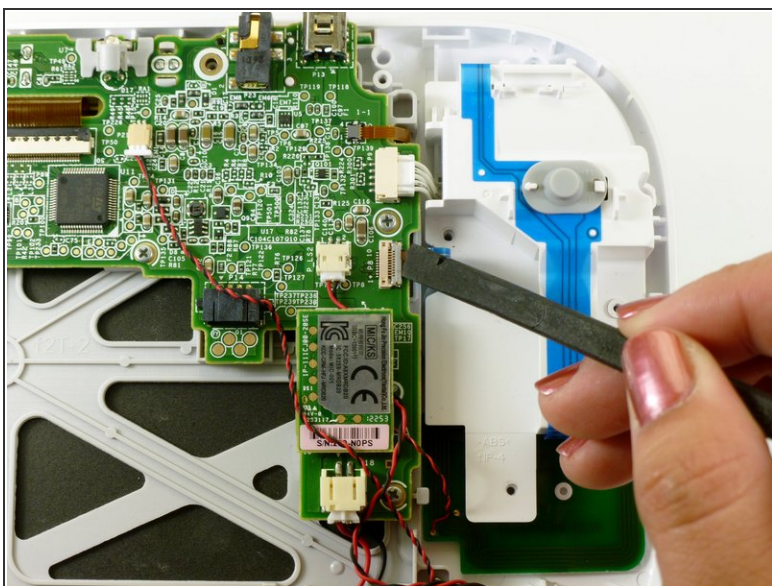
### Step 4



- Remove the top rubber cover by pulling it off of its mounts to access one of the mounting screws.
- Remove the four 5.2mm Phillips #0 screws.

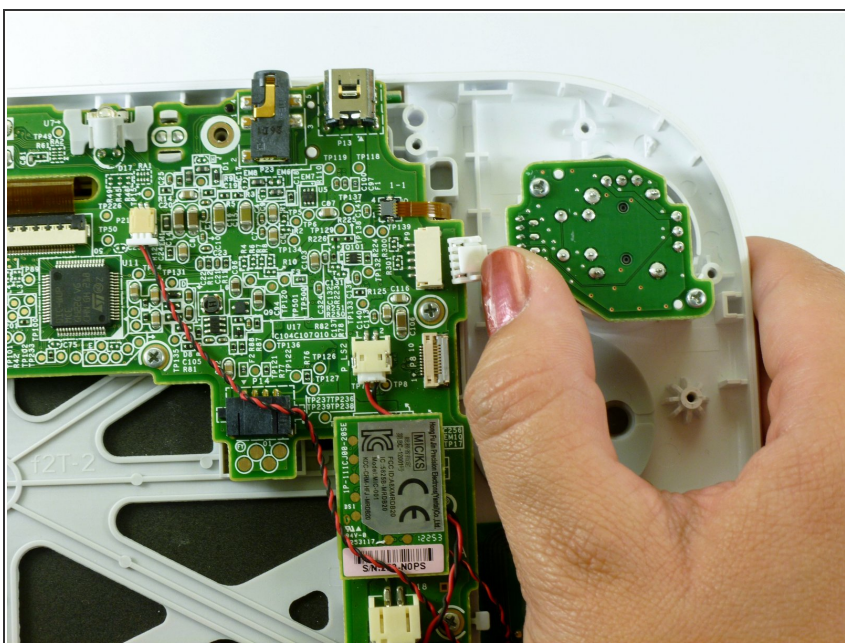


## Step 5



- Use a spudger to lift the tab which releases the blue ribbon cable.
- Remove the analog stick and button cover.

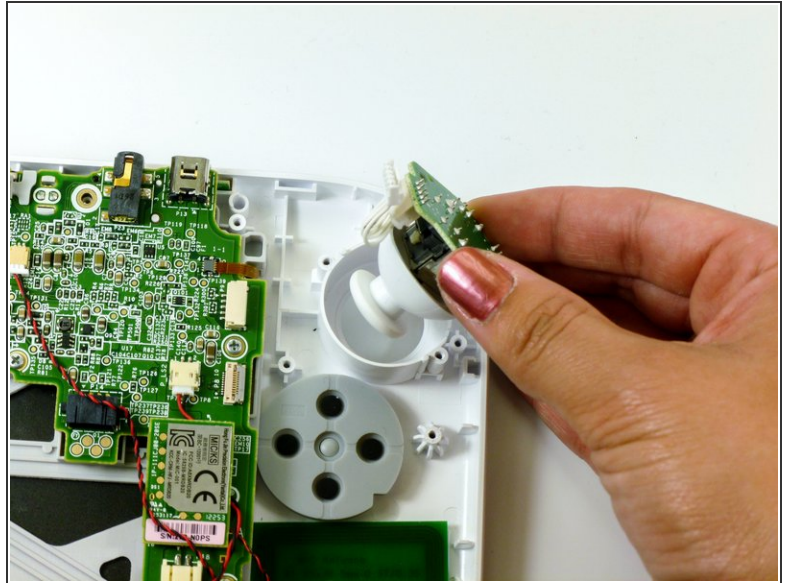
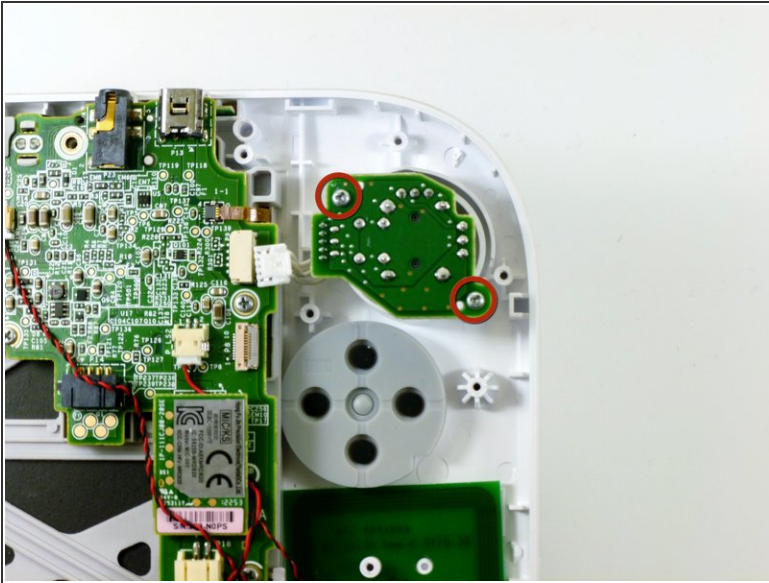
## Step 6



- Use your thumb and push the connector towards the rightmost edge to disconnect the analog stick cable connector.

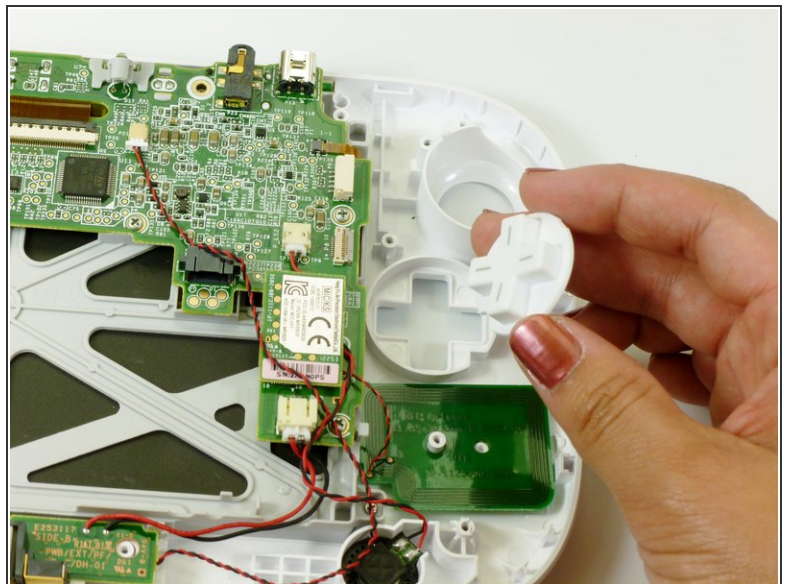
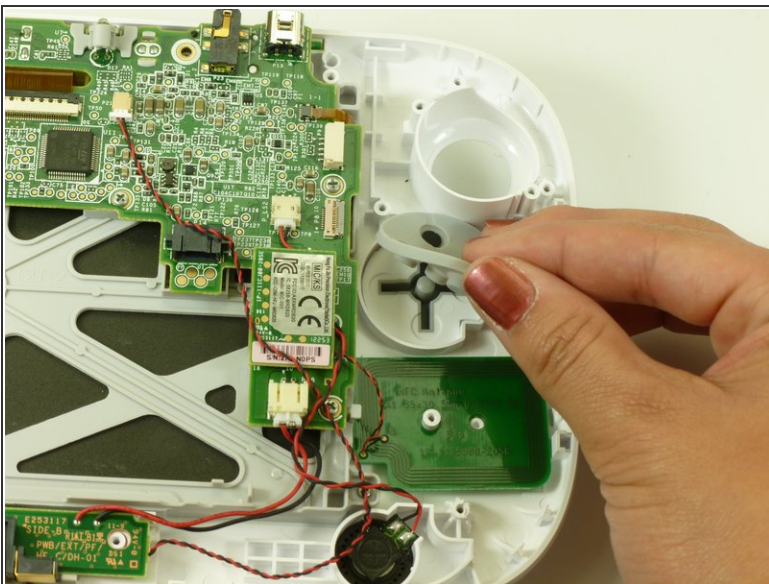


## Step 7



- Remove the two 9.0mm Tri-wing Y0 screws.
- Lift out the analog stick.

## Step 8 — Directional Pad Buttons



- Lift up and remove the rubber cover for the directional pad.
- Remove the directional pad buttons.

To reassemble your device, follow these instructions in reverse order.