



Nintendo Wii U Pro Controller ABXY Buttons Replacement

We will be cleaning out the ABXY buttons of any debris and/or residue.

Written By: Will Grabb





TOOLS:

- [Spudger](#) (1)
- [Tri-point Y0 Screwdriver](#) (1)
- [High Content Rubbing Alcohol](#) (1)
- [Q-Tips](#) (1)
- [64 Bit Driver Kit](#) (1)

Step 1 — Battery



- Turn the controller over to reveal the battery cover.

Step 2



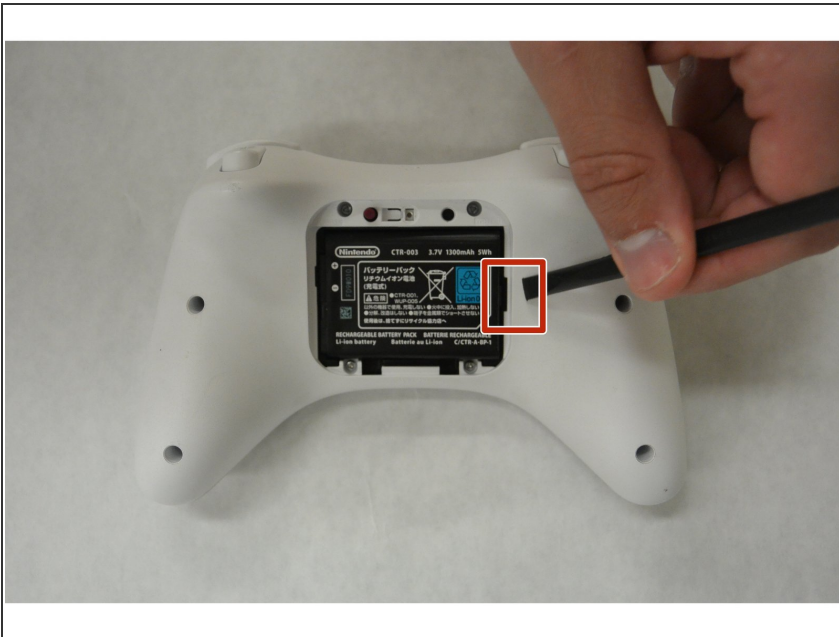
- Turn the controller over to reveal the battery cover.
- Use the J000 screwdriver to remove the screw that secures the battery cover.

Step 3



- Turn the controller over to reveal the battery cover.
- Use the J000 screwdriver to remove the screw that secures the battery cover.

Step 4



- Remove the battery from the controller by inserting the plastic spudger into the small gap on the bottom right of the battery.
- Use the spudger as a lever to pry up and remove the battery from the compartment.

Step 5



- When the battery is removed and the compartment is emptied, a new battery can be inserted (if needed).

Step 6



- When the battery is removed, use the Y0 screwdriver to remove the eight 5.5mm screws.
- Four screws are located within the battery compartment (circled in red).
- Four screws are located outside of the battery compartment (circled in orange)

Step 7



- Once all of the screws are removed, separate and then remove the bottom half of the controllers shell from the top half.

Step 8



- As indicated in the picture above, the joystick is easier to replace when you move the right trigger and sensor out of the way.
- Use the J0 screwdriver to remove the 4mm screw (circled in orange).

Step 9 — Joystick



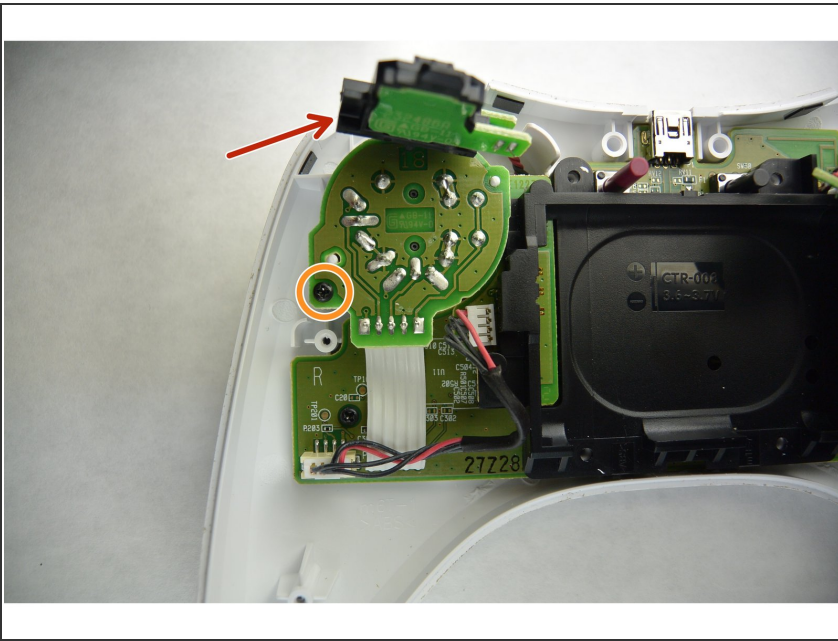
- With the battery removed, take the Y0 screwdriver to remove the eight 5.5 mm screws.
- Four of the screws are located within the battery compartment (circled in red in the image on the left).
- Four of the screws are located outside of the battery compartment (circled in orange in the image on the left).

Step 10



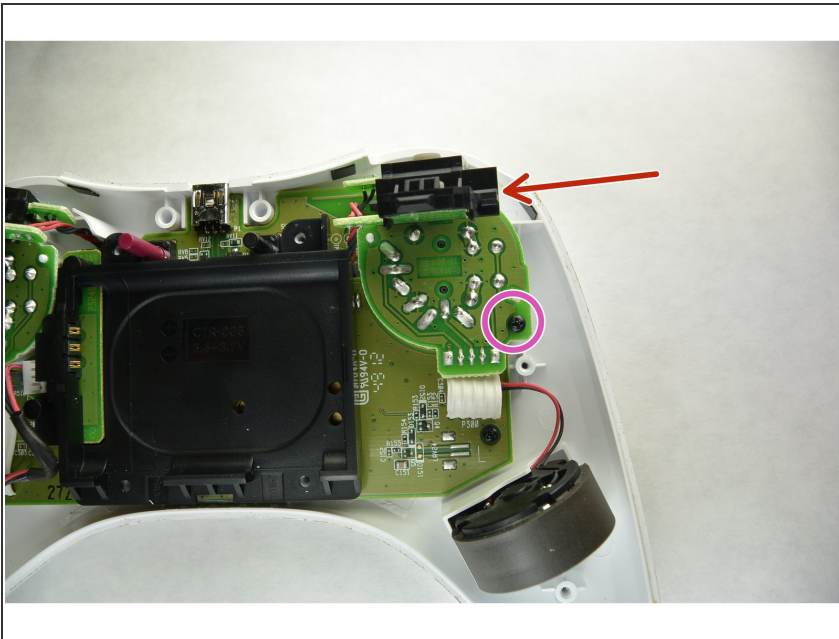
- Now that you have removed all of the screws, separate and remove the bottom half of the controllers shell from the top half.

Step 11



- To make the joystick replacement easier, move the right trigger and sensor (Indicated by the red arrow in the picture on the left) out of the way.
- Remove the 4 mm J0 screw.

Step 12



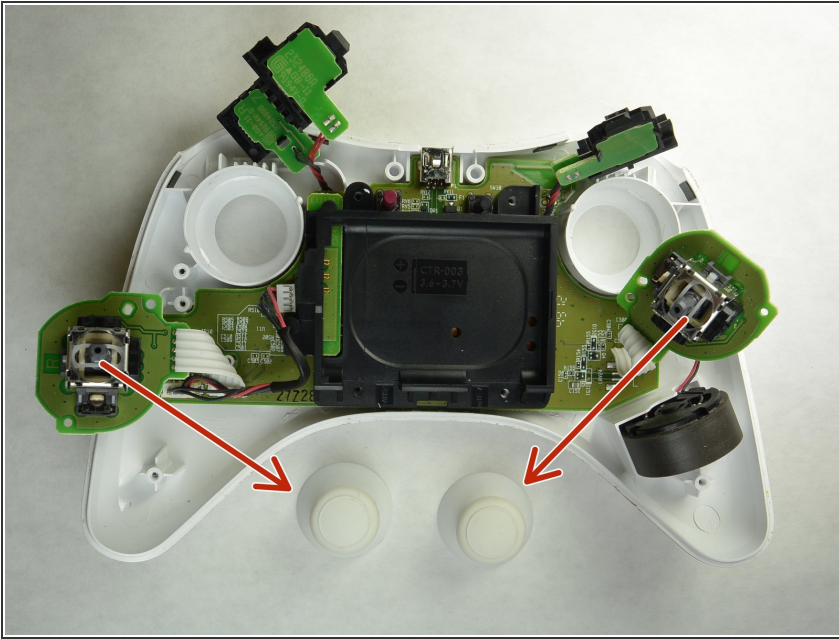
- For the other joystick, the same process as step 6 is used. Move the left trigger and sensor (Indicated by the red arrow in the picture on the left) out of the way.
- Remove the 4 mm J0 screw.

Step 13



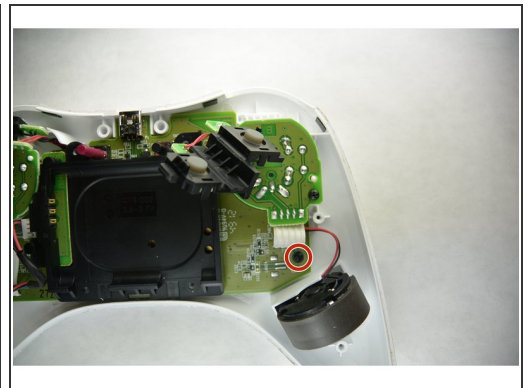
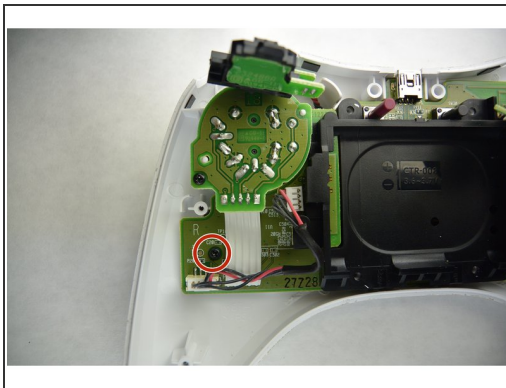
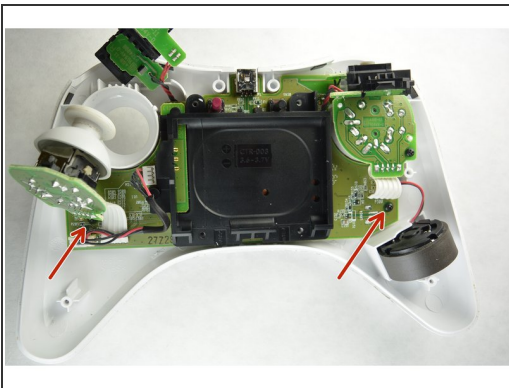
- Remove the joysticks from the controller's shell as shown in the picture.

Step 14



- Remove the joysticks from the circuit board by carefully pull the rubber thumbsticks off of the electronic bearings. (Bearings are indicated in picture on the left by the starts of the red arrows) With the old joysticks removed, the controller is now ready for new replacements.

Step 15 — ABXY Buttons



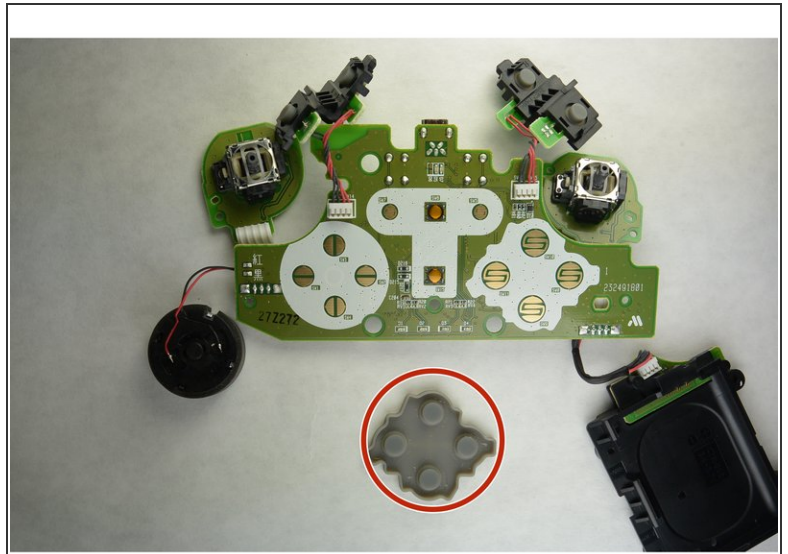
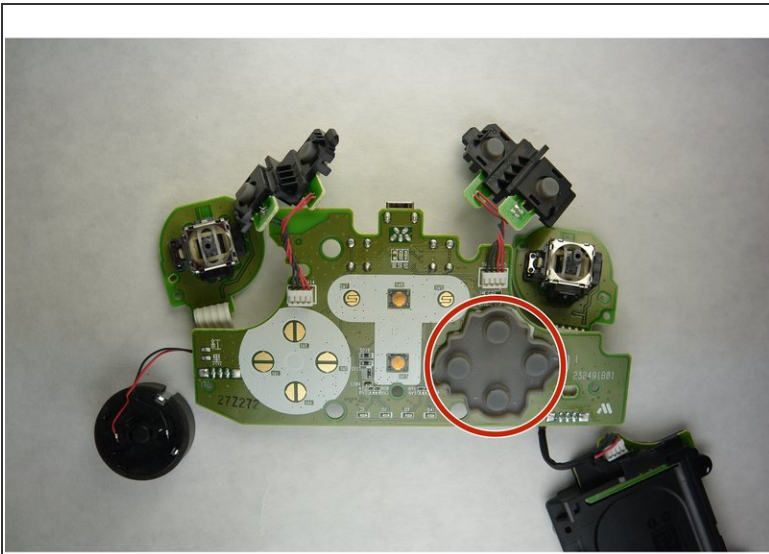
- Now that the joysticks are peeled back, one has the ability to take the controller board out of the controller. Locate the screws on the left and right hand side of the controller which are highlighted in the photos and use the J0 bit to remove these 4 mm screws.

Step 16



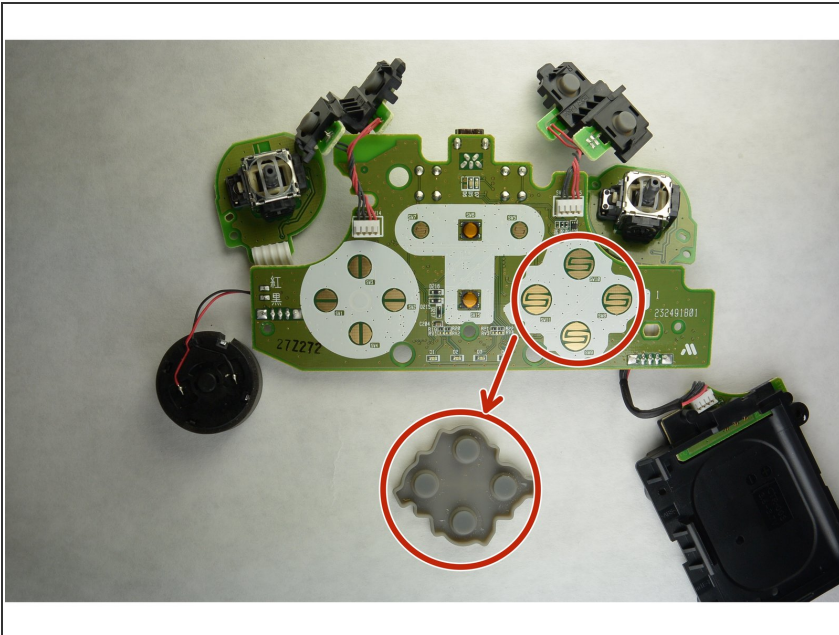
- Once these two screws have been removed, you may go ahead and remove the board from with the controller by hand. Set it to the side and direct your attention to the front panel of the controller. Remove the buttons and wipe them down completely with rubbing alcohol and a q-tip. Set them aside to dry for several minutes.

Step 17



- Return to the board that was removed from inside of the controller. Reorient the board so that it is positioned in the same manner relative to you. Remove the rubber cover over the ABXY sensors.

Step 18



- Wipe down the rubber cover pad completely with rubbing alcohol and a q-tip. Use compressed air to clean off any debris that might be on the actual contact sensors (highlighted by the orange circle).

To reassemble your device, follow these instructions in reverse order.