



# Nintendo Wii U Pro Controller D Pad Replacement

This guide shows how to replace the D Pad of a Wii U Pro Controller.

Written By: Jesse Burton



---

## INTRODUCTION

We pick up where we left off after removing the joysticks. To reach the D Pad, we will first remove the motherboard.

---

### TOOLS:

- [Spudger](#) (1)
  - [Tri-point Y0 Screwdriver](#) (1)
  - [64 Bit Driver Kit](#) (1)
-

## Step 1 — Battery



- Turn the controller over to reveal the battery cover.

## Step 2



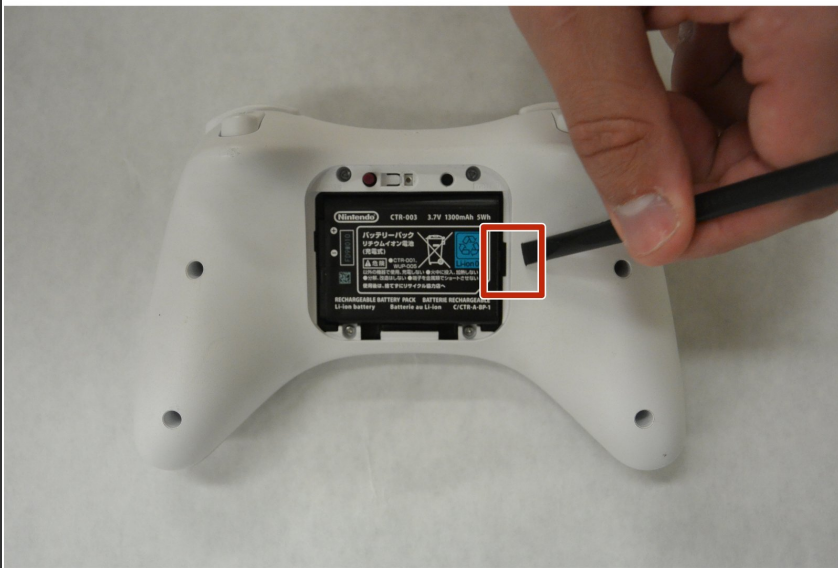
- Turn the controller over to reveal the battery cover.
- Use the J000 screwdriver to remove the screw that secures the battery cover.

## Step 3



- Turn the controller over to reveal the battery cover.
- Use the J000 screwdriver to remove the screw that secures the battery cover.

## Step 4



- Remove the battery from the controller by inserting the plastic spudger into the small gap on the bottom right of the battery.
- Use the spudger as a lever to pry up and remove the battery from the compartment.

## Step 5



- When the battery is removed and the compartment is emptied, a new battery can be inserted (if needed).

## Step 6



- When the battery is removed, use the Y0 screwdriver to remove the eight 5.5mm screws.
- Four screws are located within the battery compartment (circled in red).
- Four screws are located outside of the battery compartment (circled in orange)

## Step 7



- Once all of the screws are removed, separate and then remove the bottom half of the controllers shell from the top half.

## Step 8



- As indicated in the picture above, the joystick is easier to replace when you move the right trigger and sensor out of the way.
- Use the J0 screwdriver to remove the 4mm screw (circled in orange).



## Step 9 — Joystick



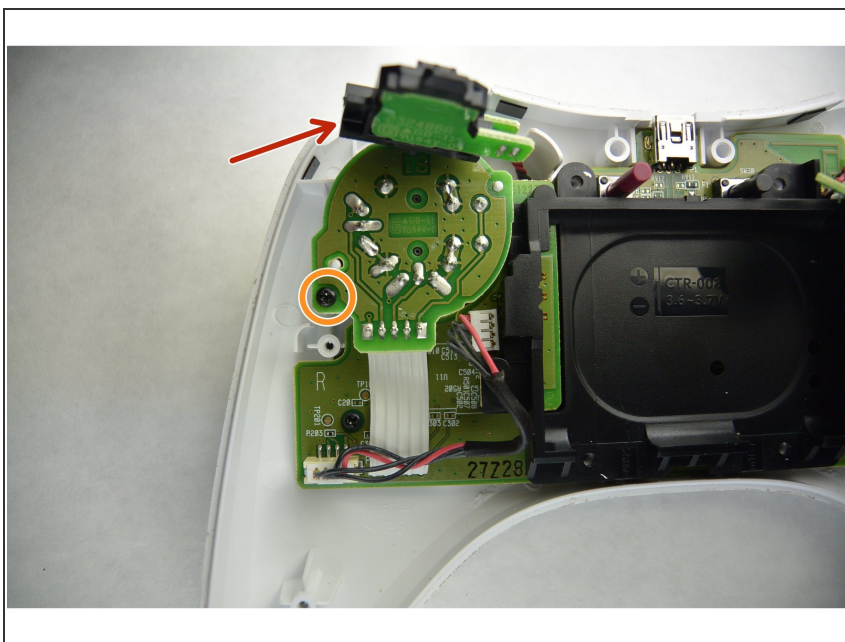
- With the battery removed, take the Y0 screwdriver to remove the eight 5.5 mm screws.
- Four of the screws are located within the battery compartment (circled in red in the image on the left).
- Four of the screws are located outside of the battery compartment (circled in orange in the image on the left).

## Step 10



- Now that you have removed all of the screws, separate and remove the bottom half of the controllers shell from the top half.

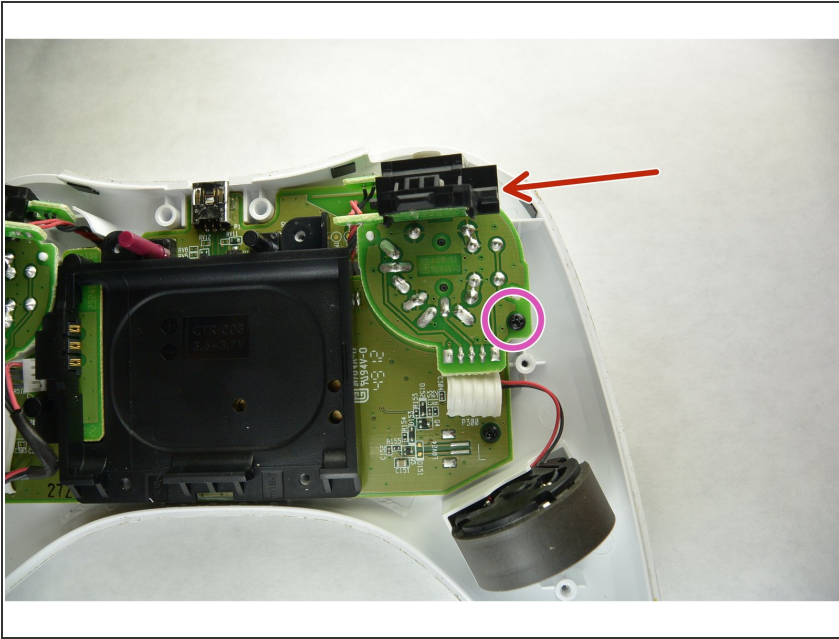
## Step 11



- To make the joystick replacement easier, move the right trigger and sensor (Indicated by the red arrow in the picture on the left) out of the way.
- Remove the 4 mm J0 screw.



## Step 12



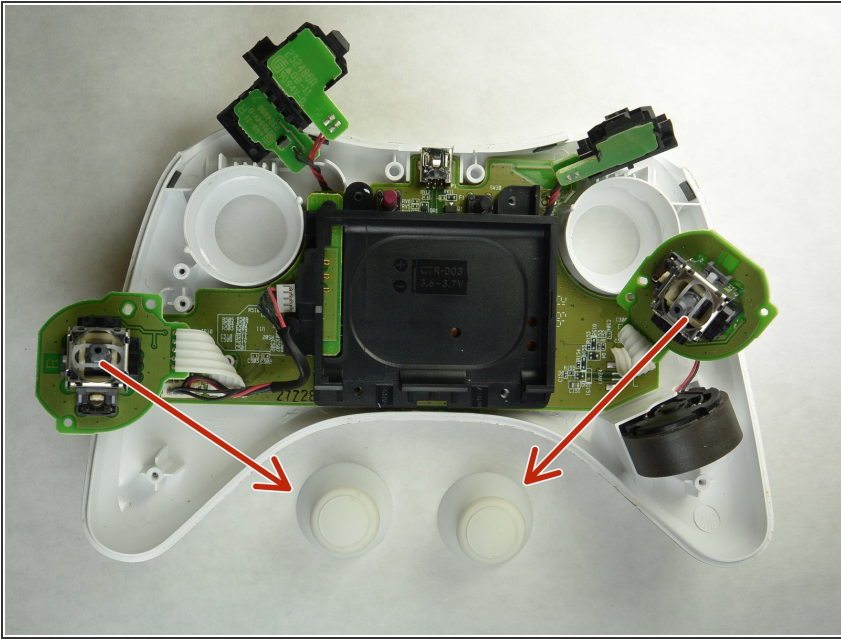
- For the other joystick, the same process as step 6 is used. Move the left trigger and sensor (Indicated by the red arrow in the picture on the left) out of the way.
- Remove the 4 mm J0 screw.

## Step 13



- Remove the joysticks from the controller's shell as shown in the picture.

## Step 14



- Remove the joysticks from the circuit board by carefully pull the rubber thumbsticks off of the electronic bearings. (Bearings are indicated in picture on the left by the starts of the red arrows) With the old joysticks removed, the controller is now ready for new replacements.

## Step 15 — D Pad



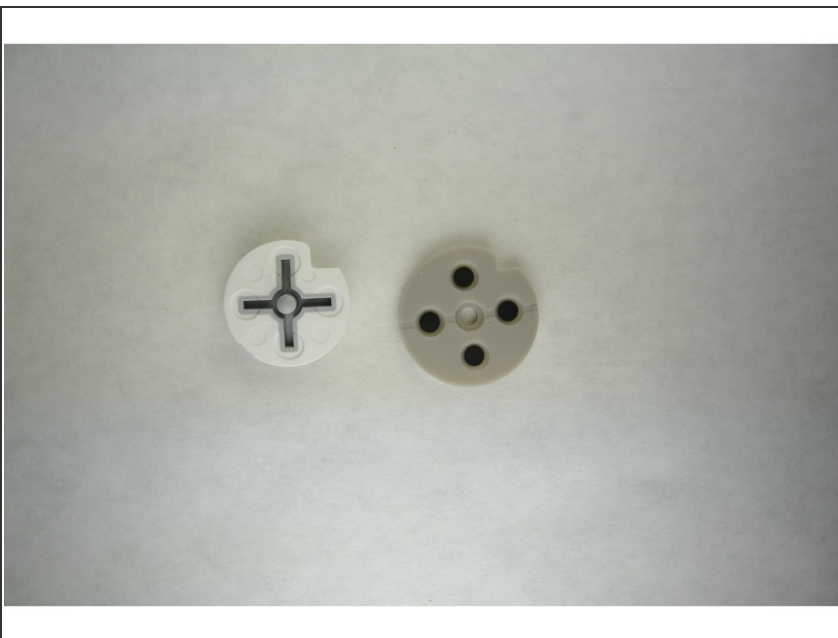
- Locate the two 4 mm motherboard screws, shown circled in red, with the J0 screwdriver.

## Step 16



- Remove the motherboard and connected components. The rubber pad of the D Pad is indicated in the image by the red arrow.

## Step 17



- Remove the rubber pad and D Pad button. The D Pad can be replaced by the new D Pad or be cleaned to improve condition.

To reassemble your device, follow these instructions in reverse order.