



# Nintendo Wii U Pro Controller Joystick Replacement

In this disassembly, we will be removing the back cover which will allow us to access the internal components of the controller.

Written By: Jesse Burton



---

## INTRODUCTION

In this disassembly, we will be removing the back cover which will allow us to access the internal components of the controller. Once this is removed, we will be pulling back the joysticks which will allow us to tackle several different tasks. This guide shows users how to replace defective and/or broken batteries as well as joysticks in their Wii U Pro controller.



### TOOLS:

- [Tri-point Y0 Screwdriver](#) (1)
  - [64 Bit Driver Kit](#) (1)
  - [Spudger](#) (1)
-

## Step 1 — Battery



- Turn the controller over to reveal the battery cover.
- Use the J000 screwdriver to remove the screw that secures the battery cover.

## Step 2



- Remove the battery from the controller by inserting the plastic spudger into the small gap on the bottom right of the battery.
- Use the spudger as a lever to pry up and remove the battery from the compartment.

## Step 3 — Joystick



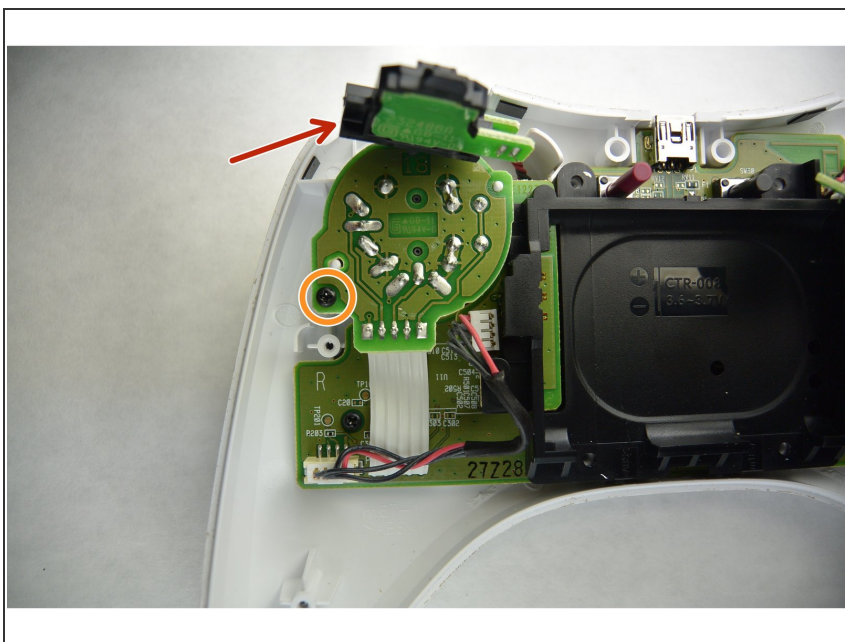
- With the battery removed, take the Y0 screwdriver to remove the eight 5.5 mm screws.
- Four of the screws are located within the battery compartment (circled in red in the image on the left).
- Four of the screws are located outside of the battery compartment (circled in orange in the image on the left).

## Step 4



- Now that you have removed all of the screws, separate and remove the bottom half of the controllers shell from the top half.

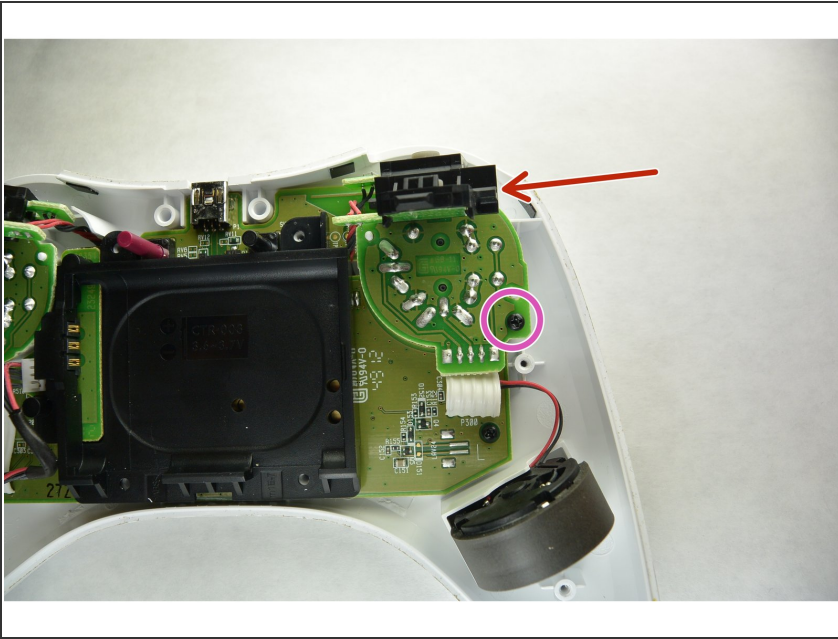
## Step 5



- To make the joystick replacement easier, move the right trigger and sensor (Indicated by the red arrow in the picture on the left) out of the way.
- Remove the 4 mm J0 screw.



## Step 6



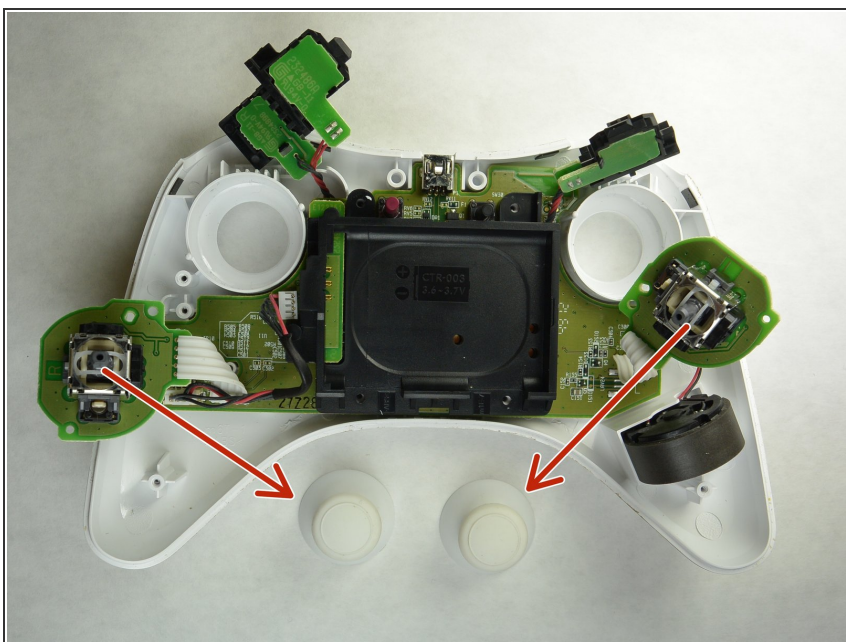
- For the other joystick, the same process as step 6 is used. Move the left trigger and sensor (Indicated by the red arrow in the picture on the left) out of the way.
- Remove the 4 mm J0 screw.

## Step 7



- Remove the joysticks from the controller's shell as shown in the picture.

## Step 8



- Remove the joysticks from the circuit board by carefully pull the rubber thumbsticks off of the electronic bearings. (Bearings are indicated in picture on the left by the starts of the red arrows) With the old joysticks removed, the controller is now ready for new replacements.