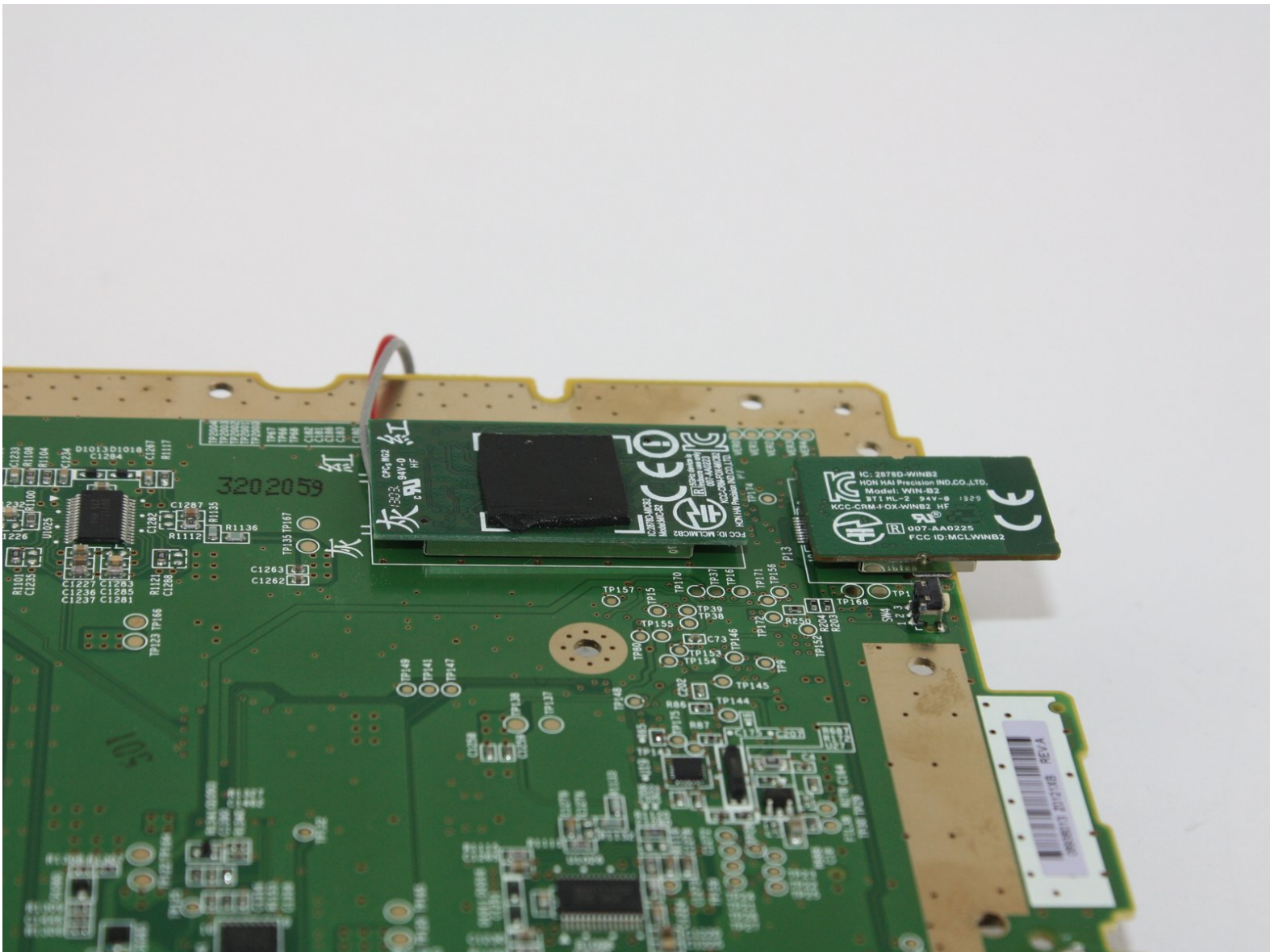




# Nintendo Wii U Wireless and Bluetooth Module Replacement

This is a guide to replacing the Broadcom 2878D-MICB2 Wireless 2.4Ghz Module and Broadcom 2878D-WINB2 Bluetooth 4.0 Module .

Written By: Jana Miles



This document was generated on 2020-03-21 10:06:18 AM (MST).

---

## INTRODUCTION

Use this guide to learn how to replace the wireless LAN modules in the Nintendo Wii U.

---



### TOOLS:

- [Spudger](#) (1)
  - [Phillips #0 Screwdriver](#) (1)
  - [Phillips #1 Screwdriver](#) (1)
  - [Y1 Tri-point Screwdriver](#) (1)
-

## Step 1 — Wireless 2.4ghz Module and Bluetooth Module



- You will first need to find all the screws hidden underneath the black (or white) square stickers. They are all located on the bottom side of the Wii U. Use a spudger to remove stickers if it is difficult to peel off with your fingers.

## Step 2



- Remove the five Phillips #0 screws.
- Remove the four Tri-Wing (Y1) screws.

## Step 3



- Remove the CMOS battery door on the left side of the console.
- Remove the three Y1 Tri-Wing screws.

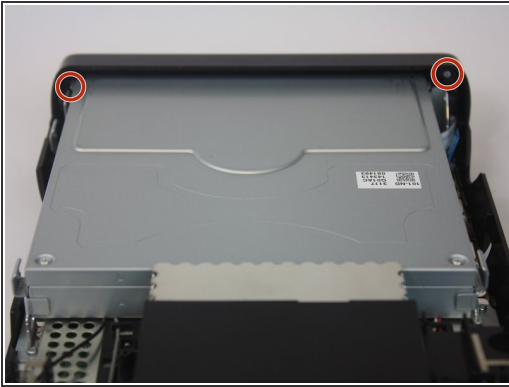
## Step 4



- Gently pry off the top lid of the Wii U.



## Step 5



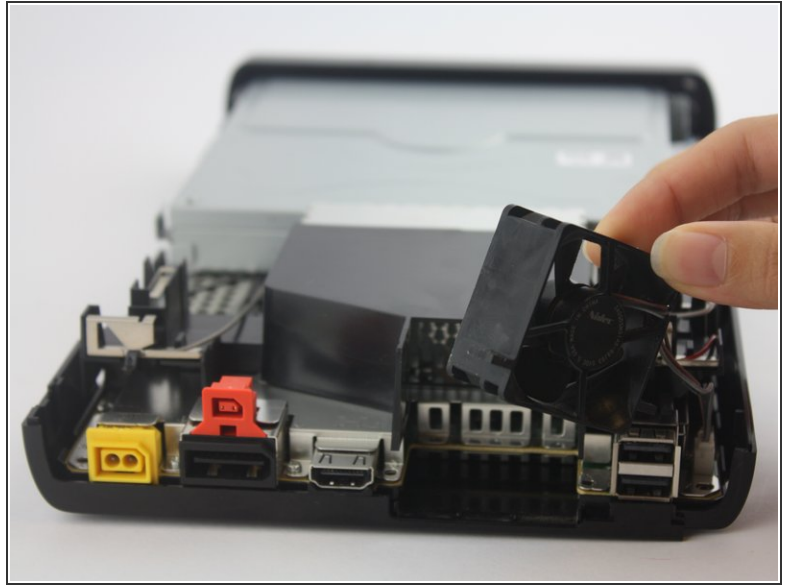
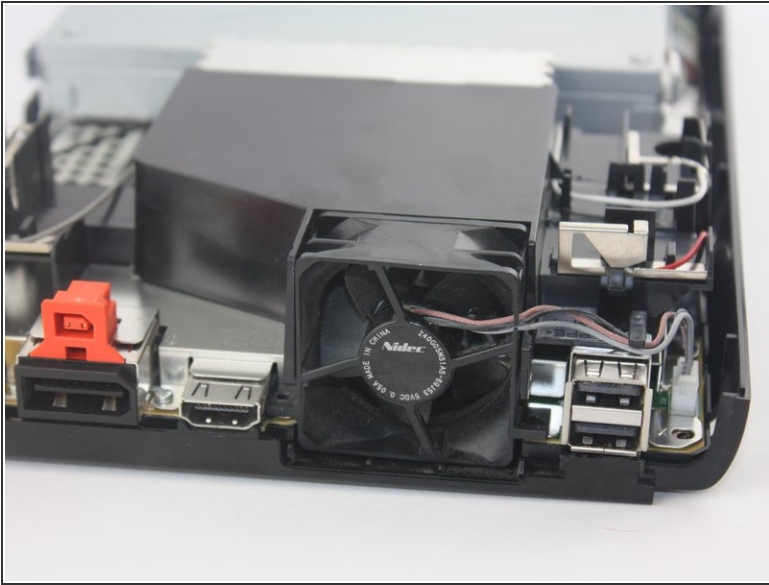
- Rotate the device so that the front plate is facing you.
- Remove the two Philips Head (PH1) screws that connect the front plate to each side of the device.

## Step 6



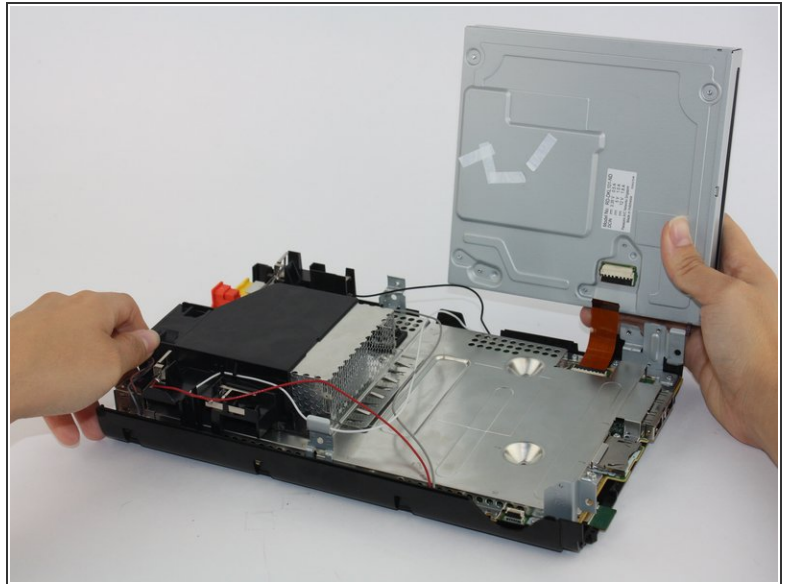
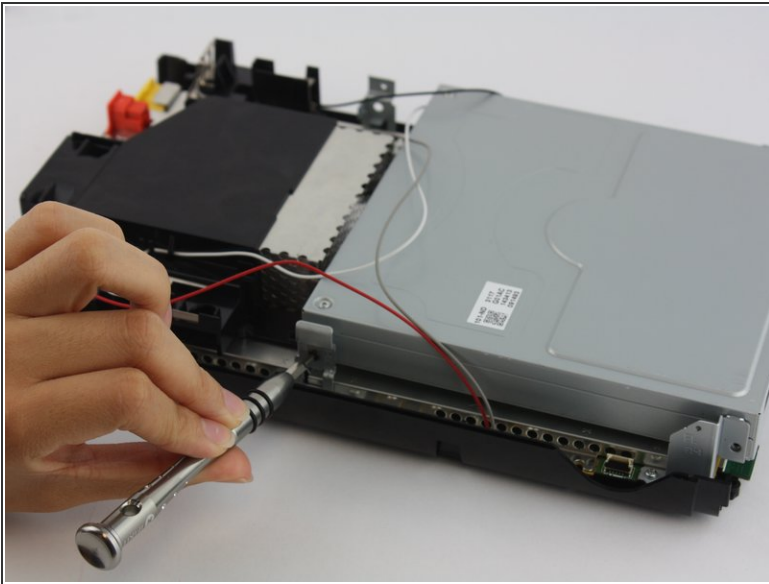
- Remove the ribbon cable and separate the front plate from the main console.

## Step 7



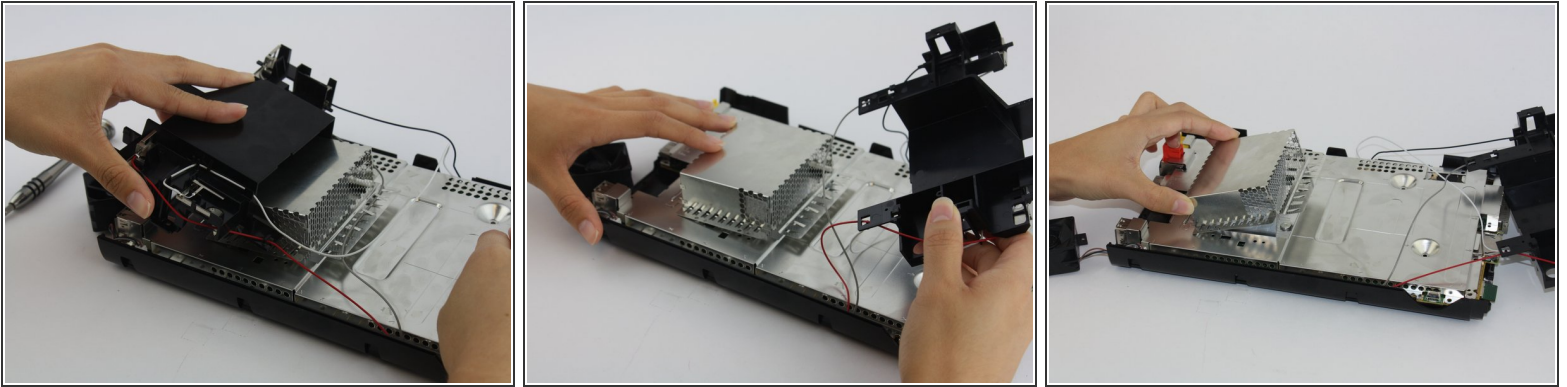
- Remove the fan by unscrewing the two connecting screws on both sides of the fan. The fan's wires will still be attached to the motherboard as it is permanently affixed.

## Step 8



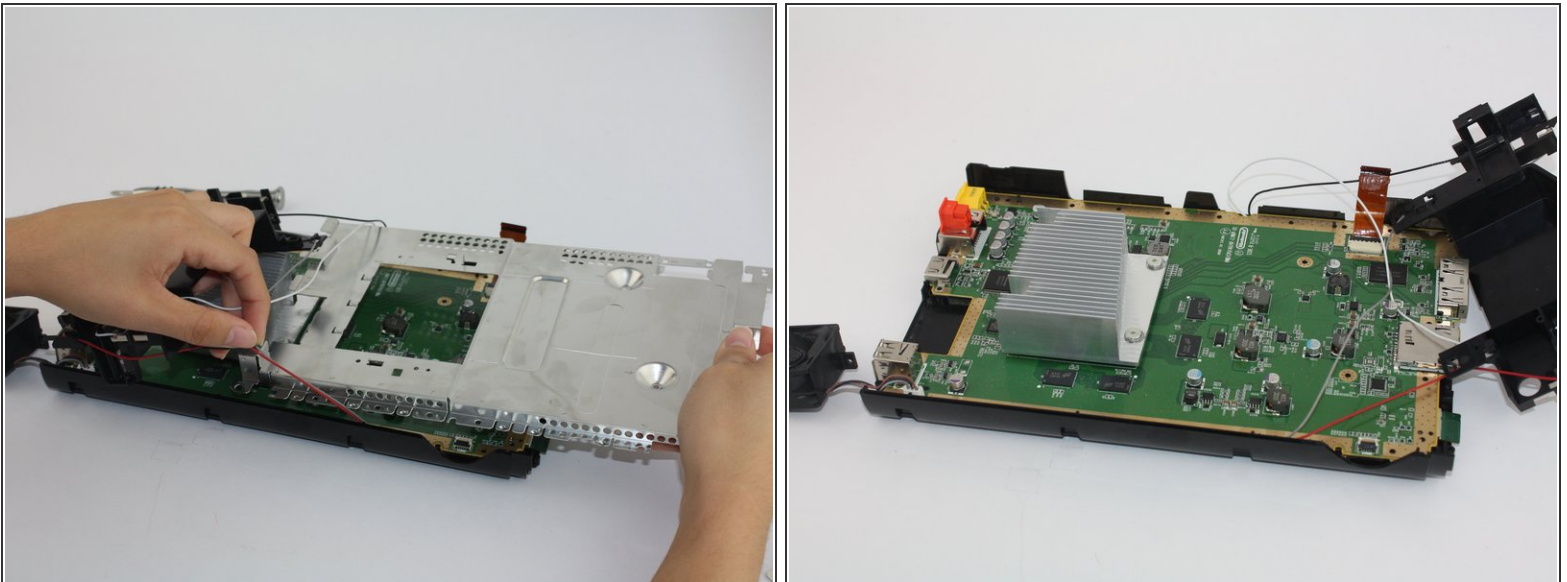
- Using a Philips head (PH0) screwdriver, unscrew the four screws off the disk reader from the main console and remove disc reader.

## Step 9



- Unscrew and remove the heatsink. You will have to carefully move the antenna cables out of the way in order to remove the heatsink shielding.

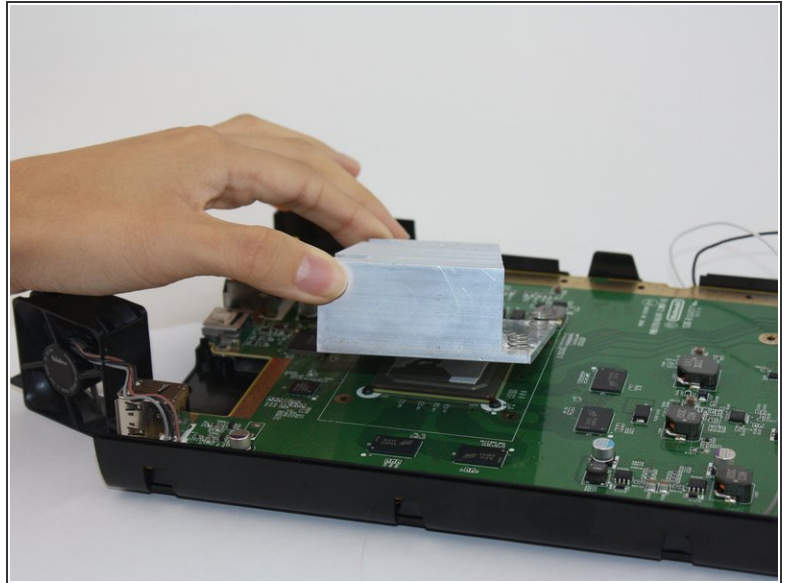
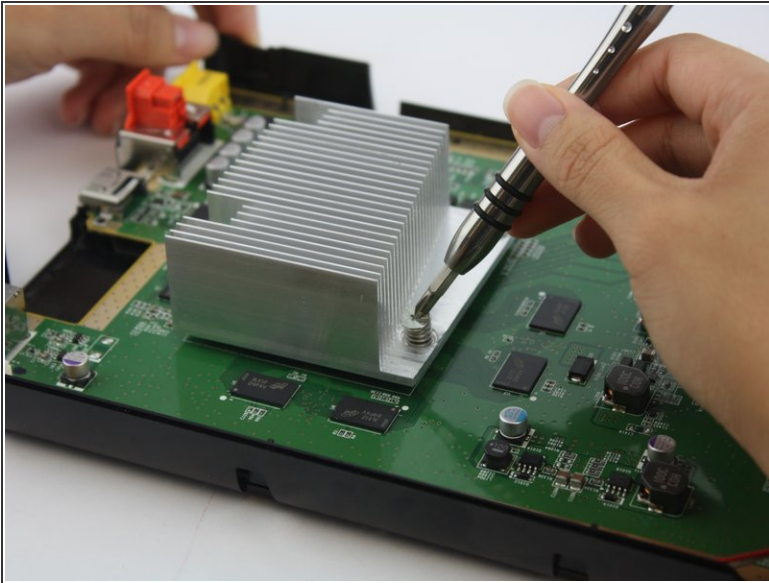
## Step 10



- Using a Philips head (PH1) unscrew all floor screws connecting the outer plate from the circuit board to remove the circuit board.

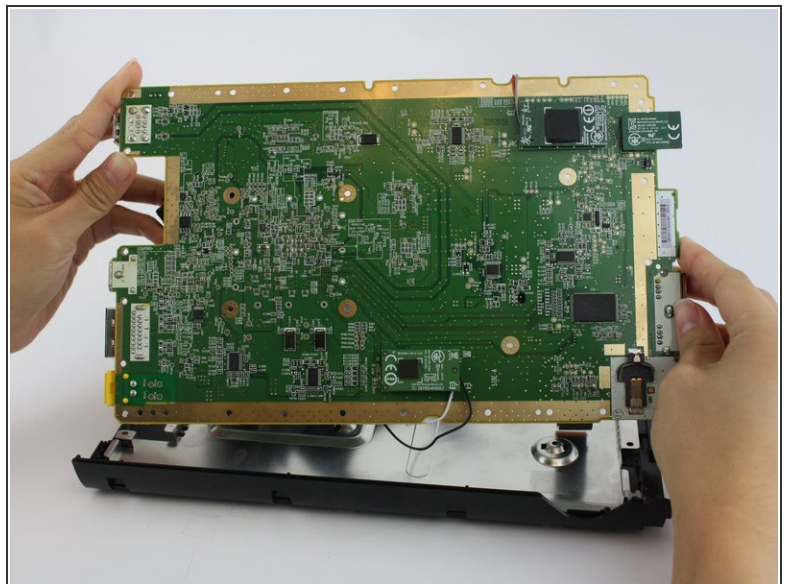
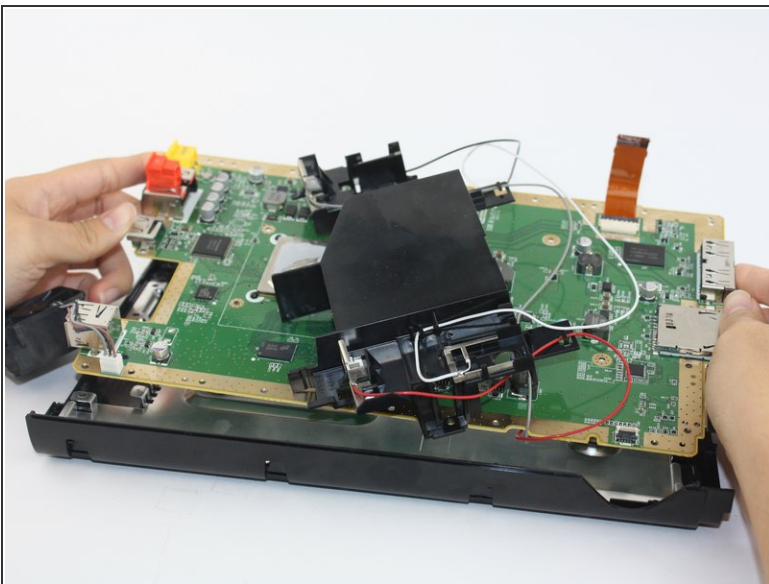


## Step 11



- Using a Phillips Head #1 unscrew the heatsink from the motherboard.

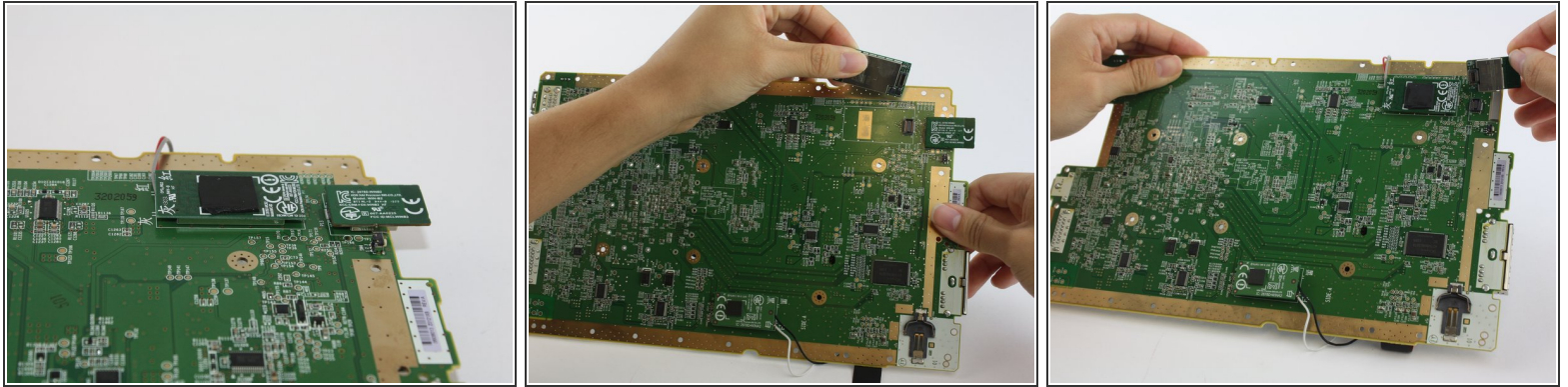
## Step 12



- There are screws lining the perimeter of the motherboard that you will remove with a Phillips Head (PH1) screwdriver. Once they are unscrewed, the motherboard should easily separate from the lower tray.
- Once the motherboard is detached, flip it over to view the wireless modules.



## Step 13



- The wireless modules are attached with adhesive. Pull up gently on the module to avoid breakage.

To reassemble your device, follow these instructions in reverse order.