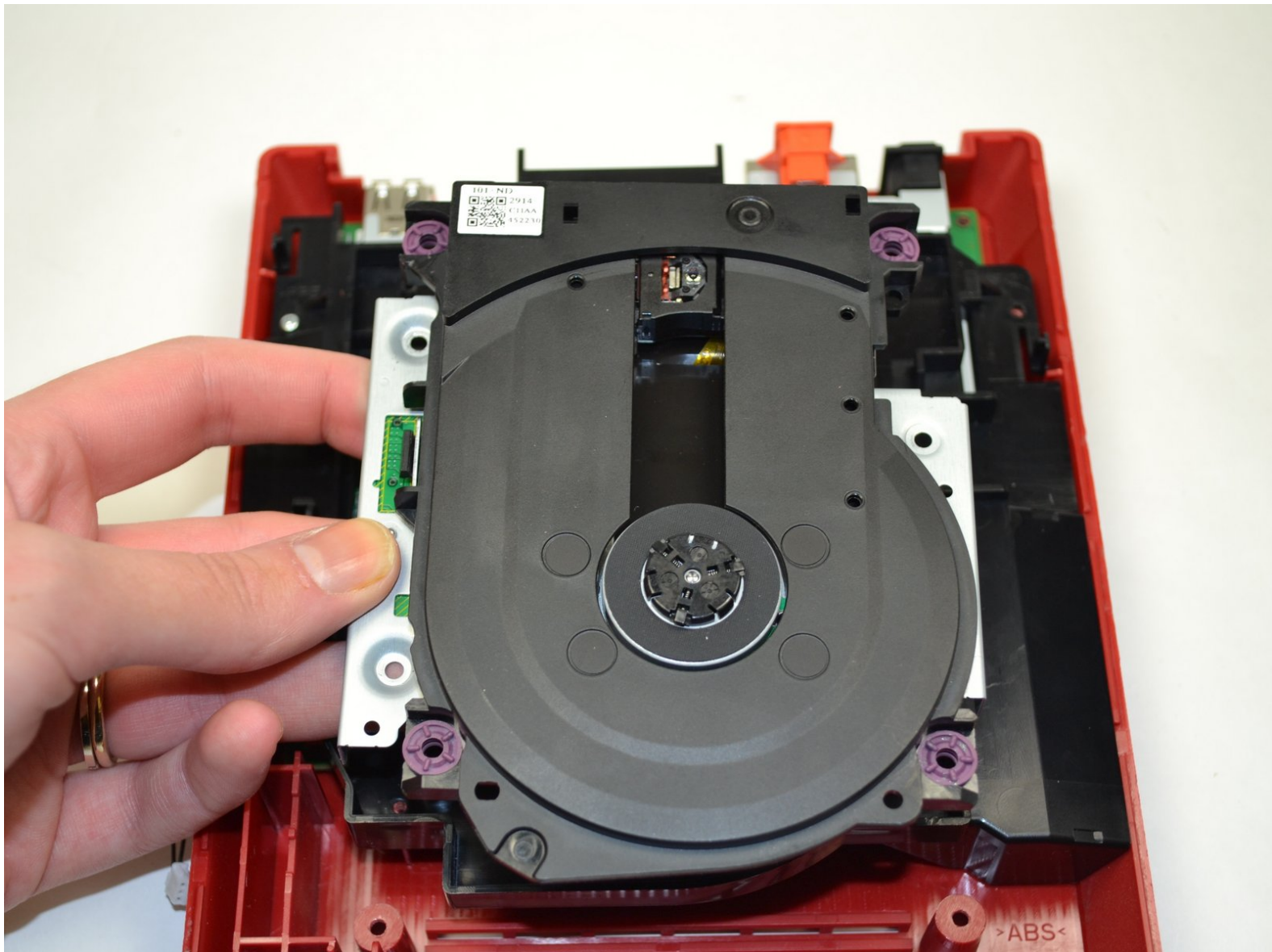




# Nintendo Wii mini Disc Drive Replacement

Replace a worn out or broken disc drive in your Nintendo Wii mini.

Written By: Kristin Anderson



# INTRODUCTION

Use this guide to replace the disc drive in your Nintendo Wii mini.



## TOOLS:

- [Phillips #0 Screwdriver](#) (1)
- [iFixit Opening Tools](#) (1)
- [Tweezers](#) (1)



## PARTS:

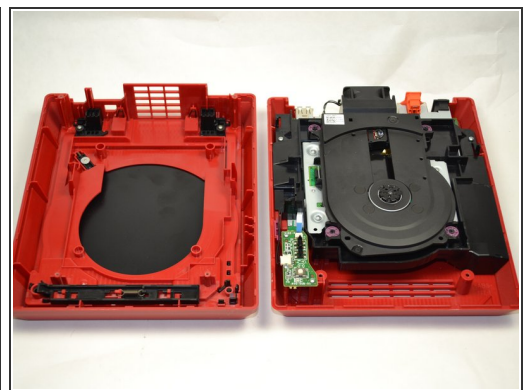
- [Nintendo Wii mini Motherboard & Paired Optical Drive](#) (1)

## Step 1 — Upper Case



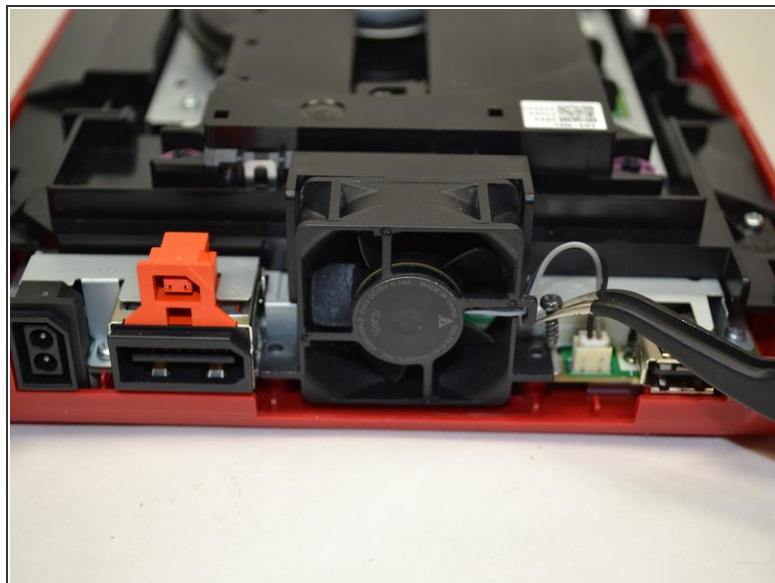
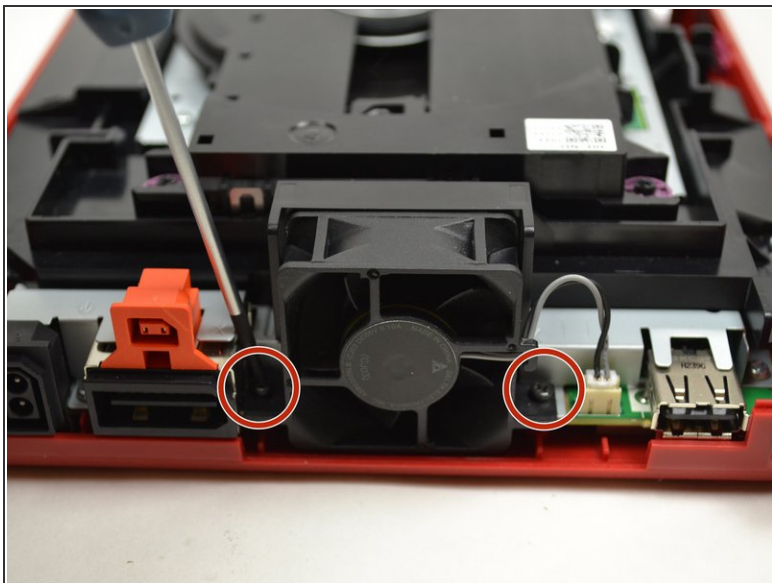
- Turn the Wii mini upside down.
- Remove the two rubber feet at the back of the console to reveal the hidden screws.
- Remove the four 6mm Phillips #0 screws.

## Step 2



- Turn the Wii mini right-side up.
- Run a plastic opening tool around the middle edge of the console to loosen the top piece.
- Gently lift the top piece of the console and set it aside.

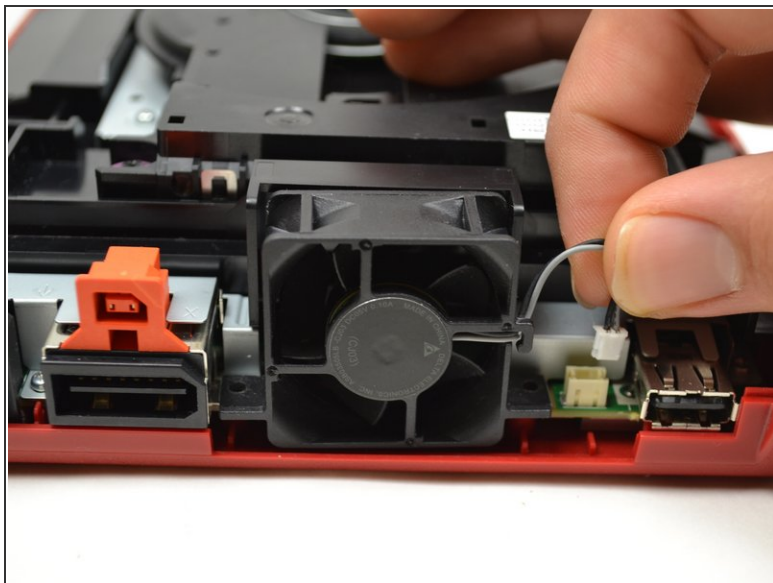
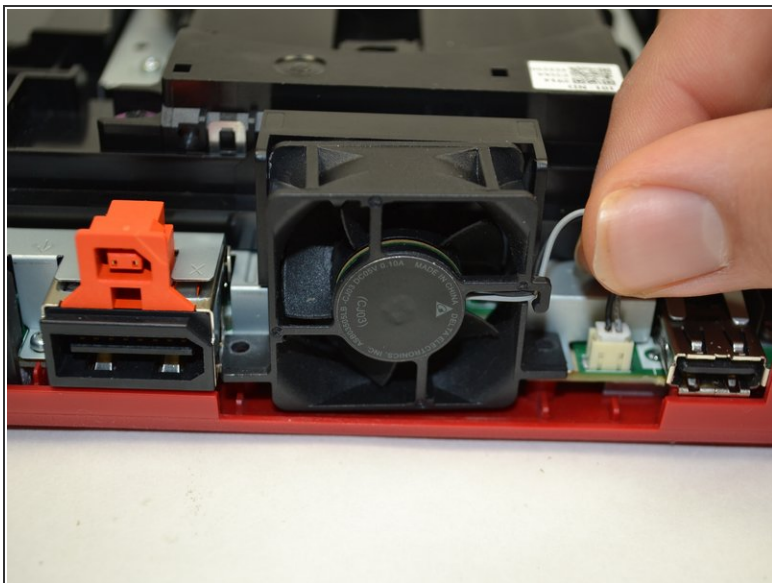
## Step 3 — Fan



- Turn the Wii mini around so that the back of the device is facing you.
- Using a Phillips #0 Screwdriver, unscrew the two 6mm screws on either side of the fan piece.
- ⓘ You may need to use tweezers to pull out the screws once they are loosened.

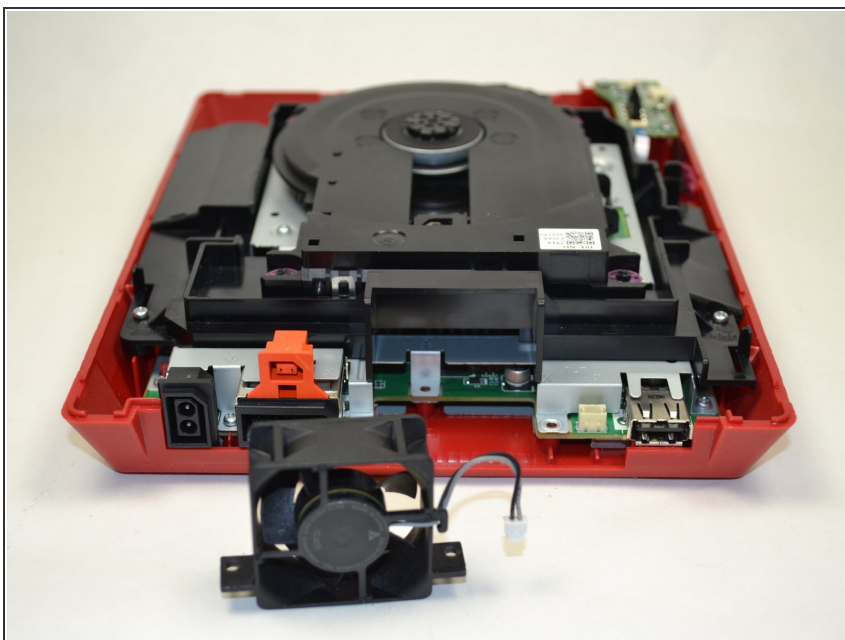


## Step 4



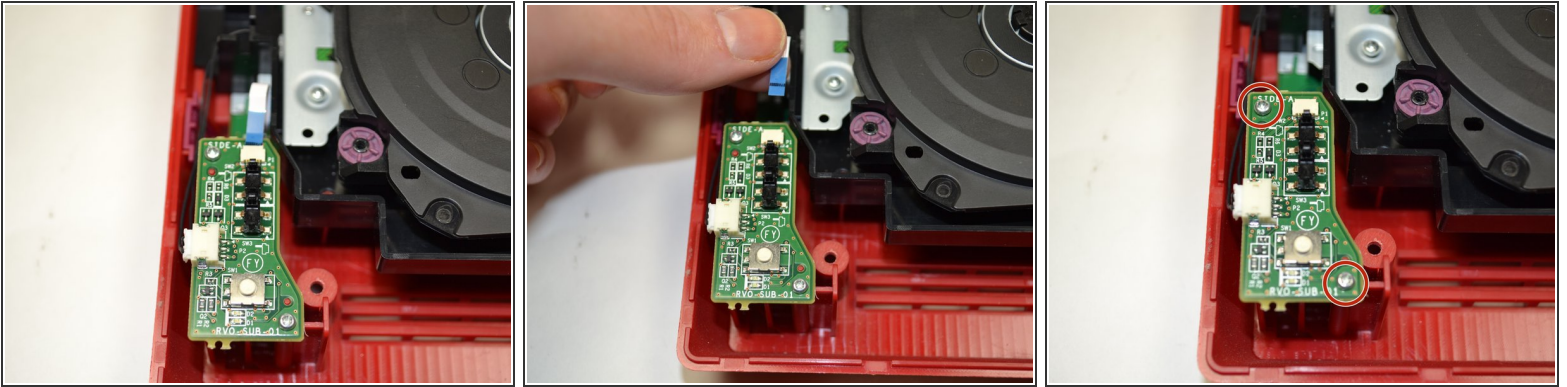
- Using your fingers, gently pull the top of the pin connector straight up to detach the fan from the console.

## Step 5



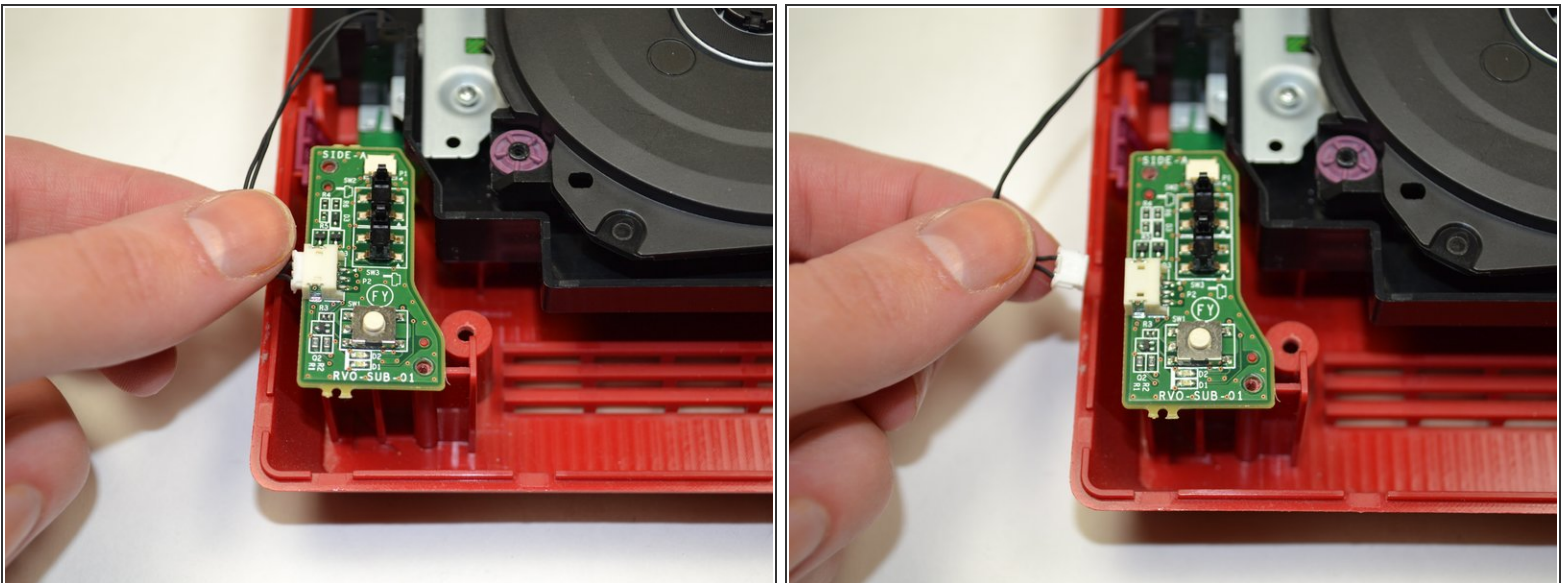
- Remove the fan piece and set it aside.

## Step 6 — Power Board



- Using your fingers, slide out the blue ribbon cable from the top of the power board.
- Using a Phillips #0 Screwdriver, unscrew the two 4mm screws at the top and bottom of the power board.

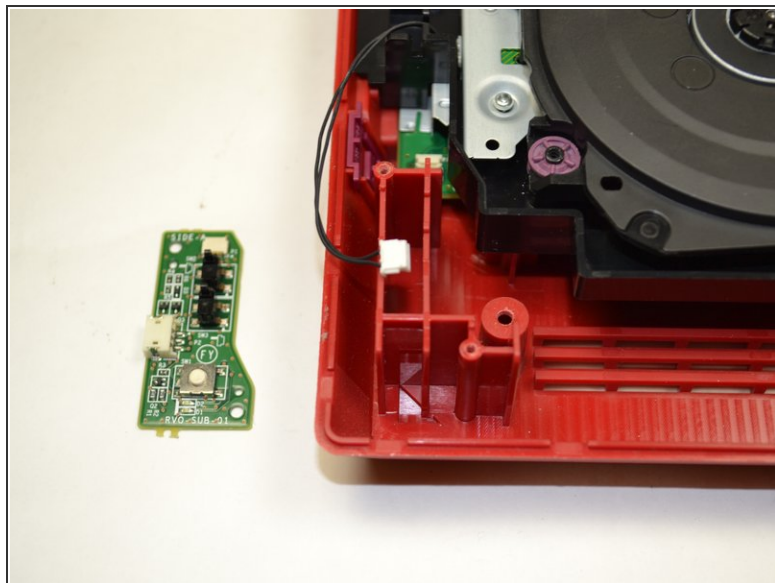
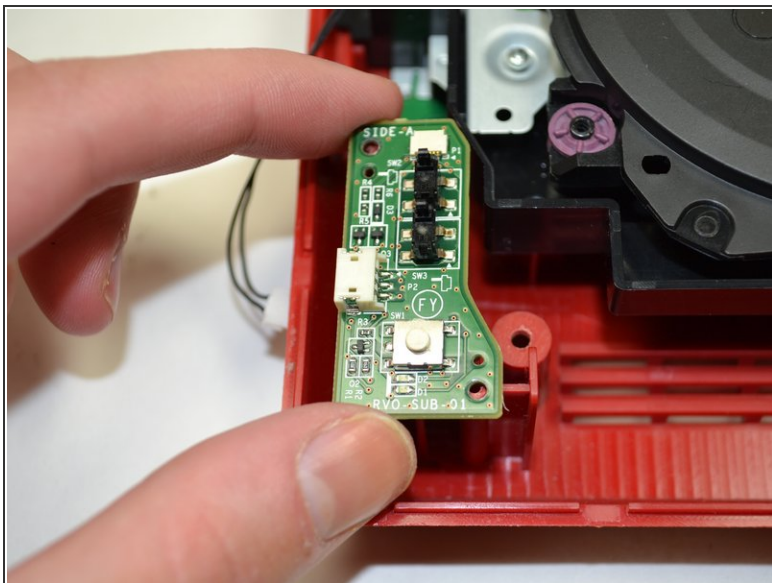
## Step 7



- Using your fingers, gently pull the pin connector to disconnect the power board from the disc drive.

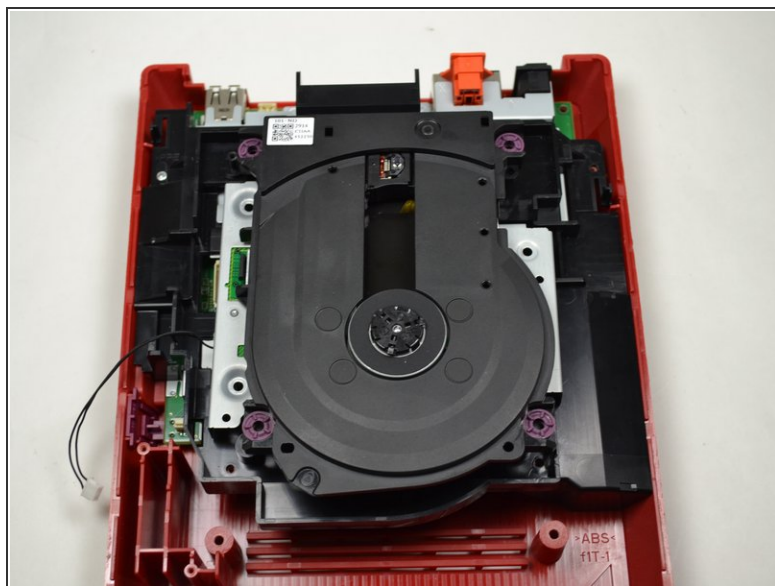


## Step 8



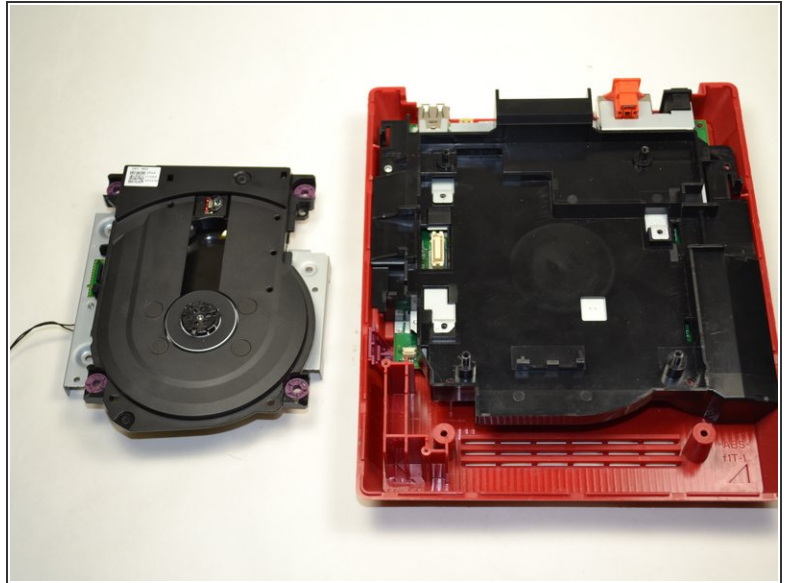
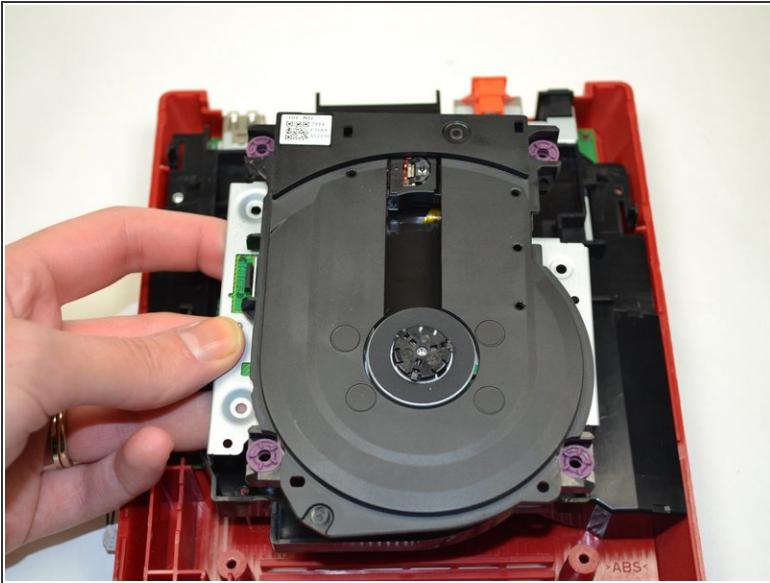
- Lift the power board from the console and set it aside.

## Step 9 — Disc Drive



- Using a Phillips #0 Screwdriver, unscrew the four 6mm screws.

## Step 10



- Lift the disc drive out of the console and set it aside.

To reassemble your device, follow these instructions in reverse order.