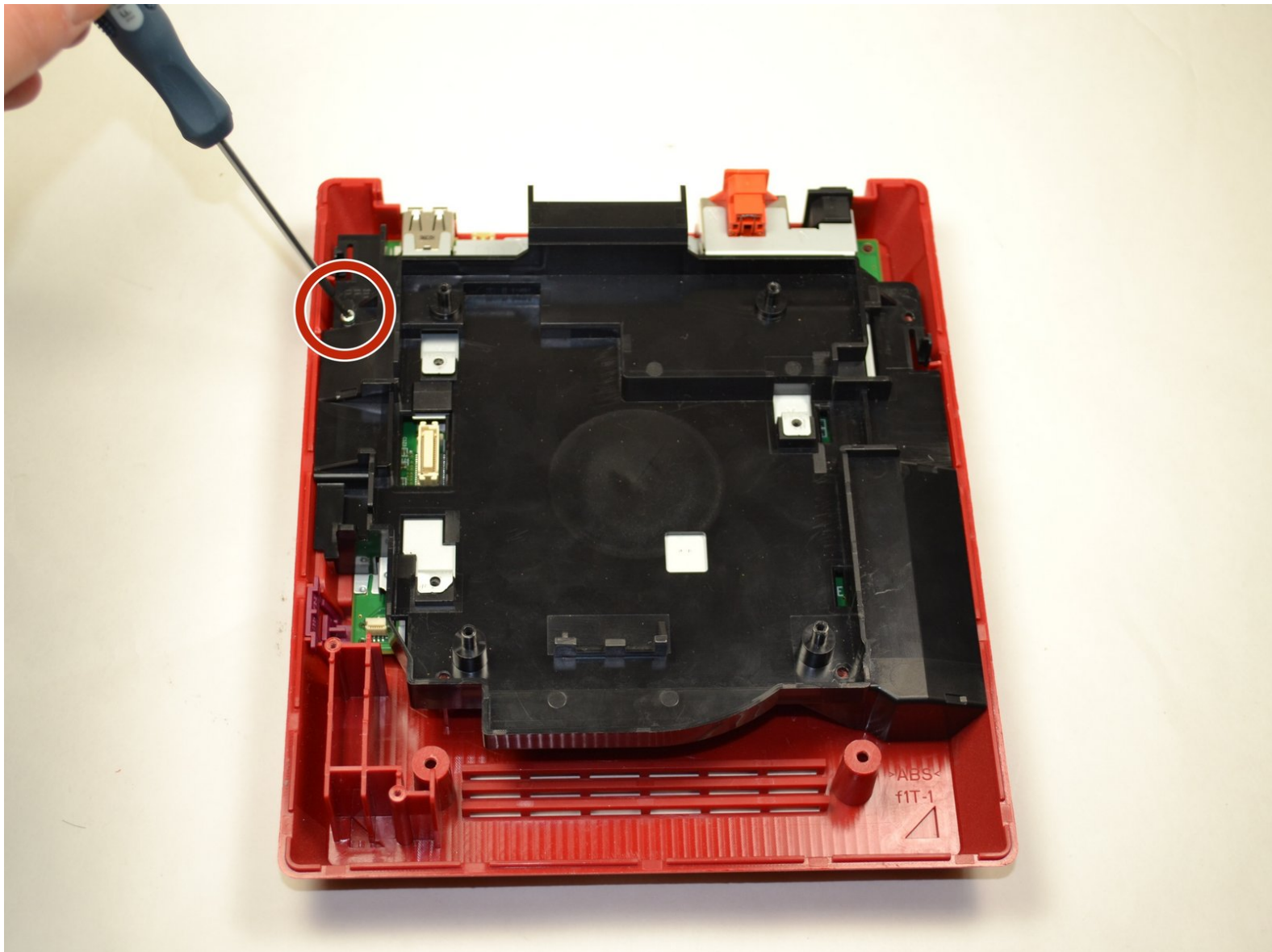




Nintendo Wii mini Motherboard Replacement

Replace a broken motherboard in your Wii mini.

Written By: Kristin Anderson



INTRODUCTION

Use this guide to replace the motherboard in your Nintendo Wii mini.



TOOLS:

- [Phillips #0 Screwdriver](#) (1)
- [iFixit Opening Tools](#) (1)
- [Tweezers](#) (1)



PARTS:

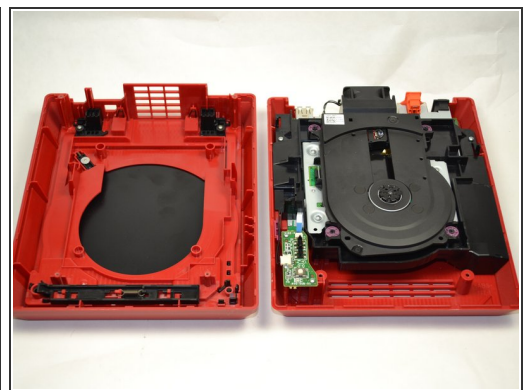
- [Nintendo Wii mini Motherboard](#) (1)

Step 1 — Upper Case



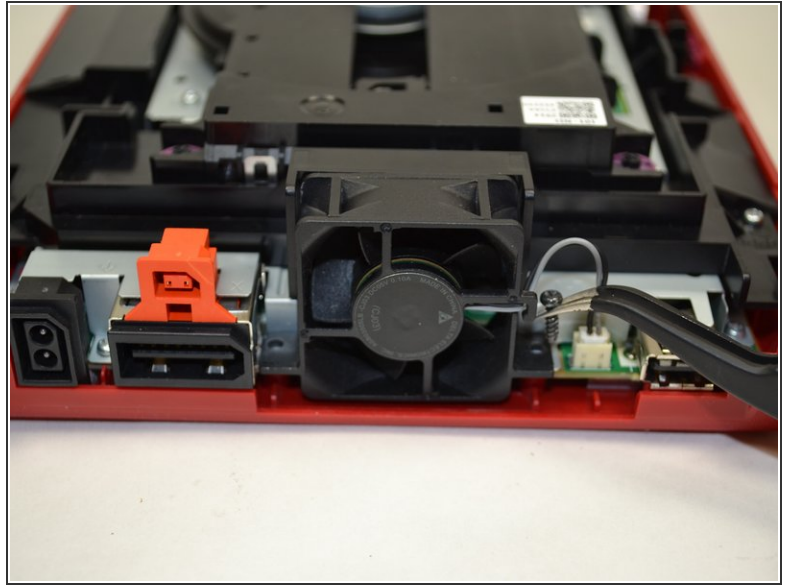
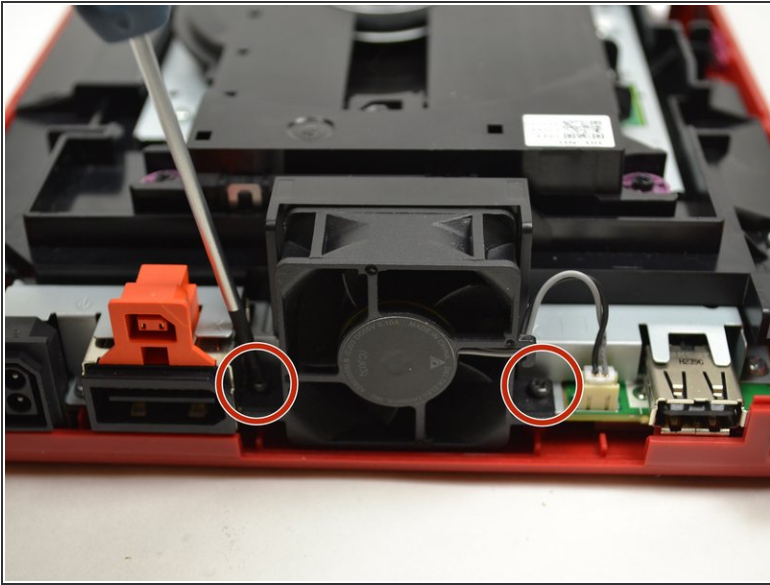
- Turn the Wii mini upside down.
- Remove the two rubber feet at the back of the console to reveal the hidden screws.
- Remove the four 6mm Phillips #0 screws.

Step 2



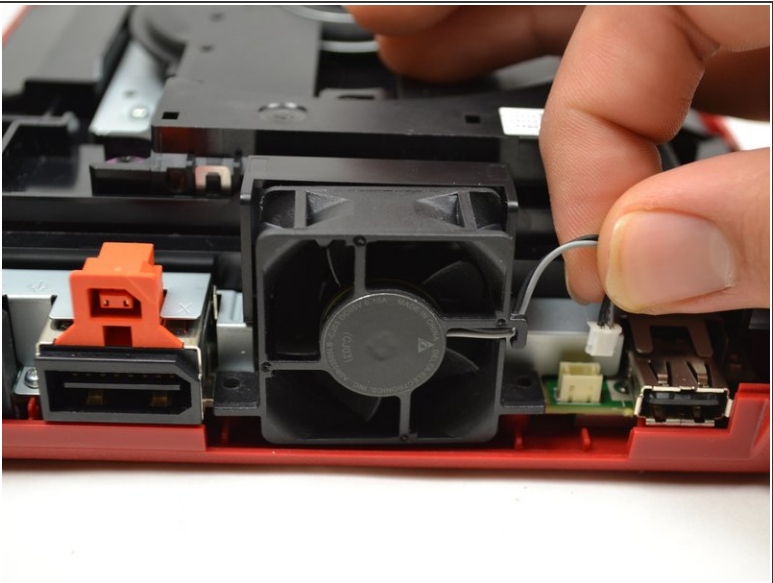
- Turn the Wii mini right-side up.
- Run a plastic opening tool around the middle edge of the console to loosen the top piece.
- Gently lift the top piece of the console and set it aside.

Step 3 — Fan



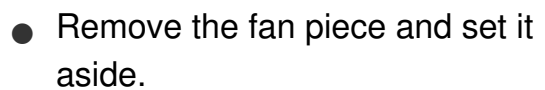
- Turn the Wii mini around so that the back of the device is facing you.
- Using a Phillips #0 Screwdriver, unscrew the two 6mm screws on either side of the fan piece.
- ⓘ You may need to use tweezers to pull out the screws once they are loosened.

Step 4

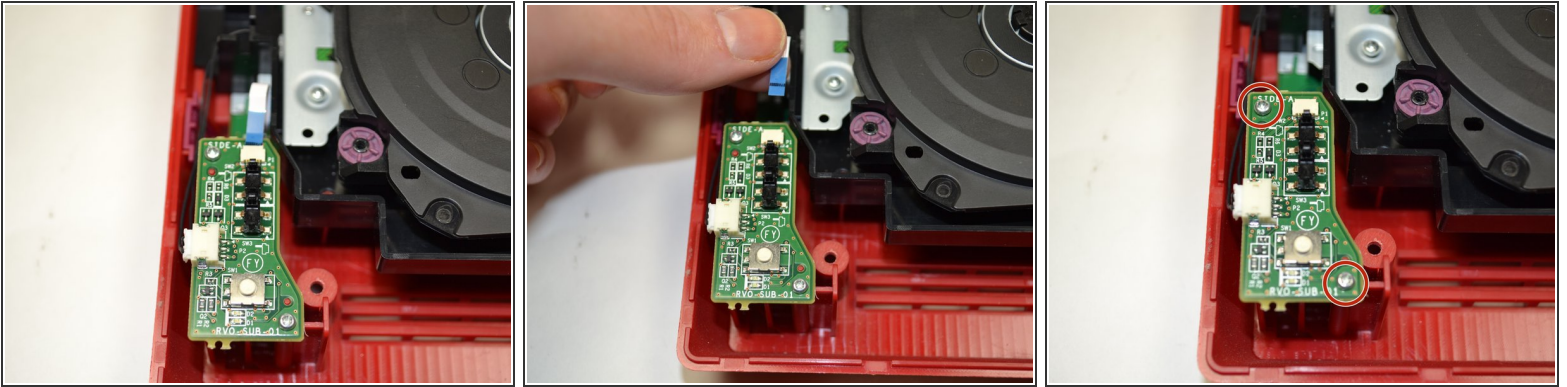


- Using your fingers, gently pull the top of the pin connector straight up to detach the fan from the console.

Step 5

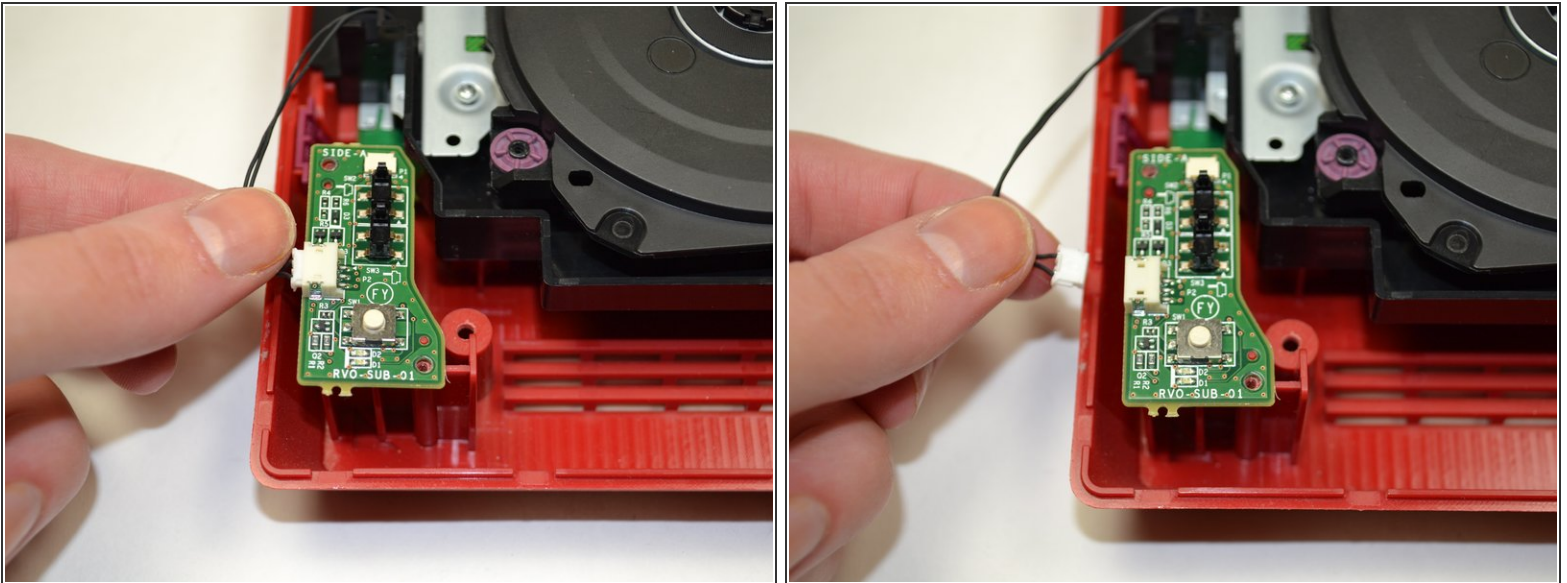


Step 6 — Power Board



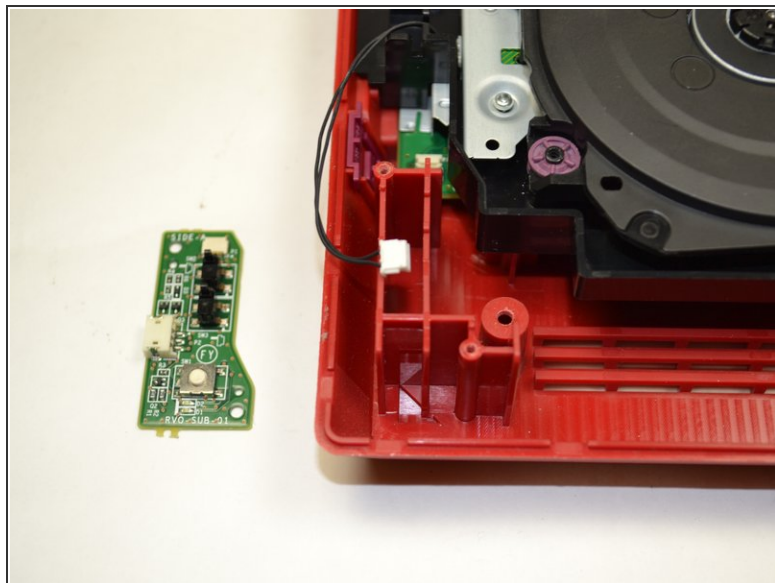
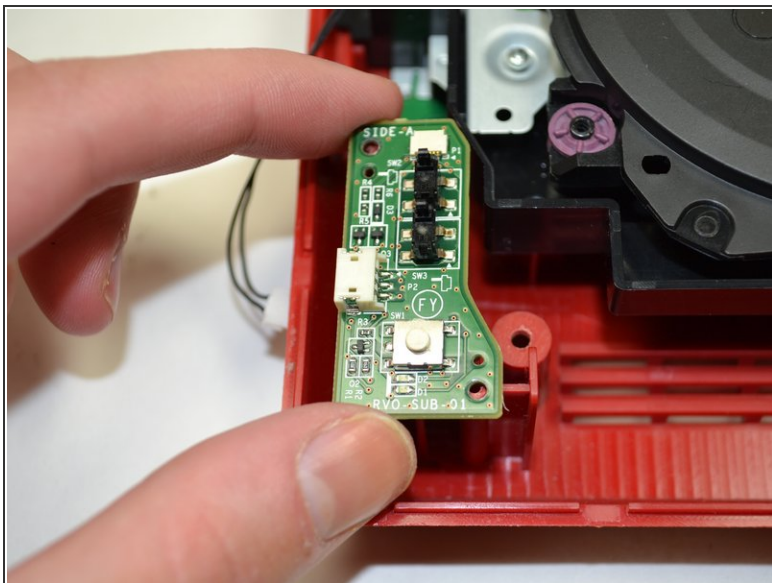
- Using your fingers, slide out the blue ribbon cable from the top of the power board.
- Using a Phillips #0 Screwdriver, unscrew the two 4mm screws at the top and bottom of the power board.

Step 7



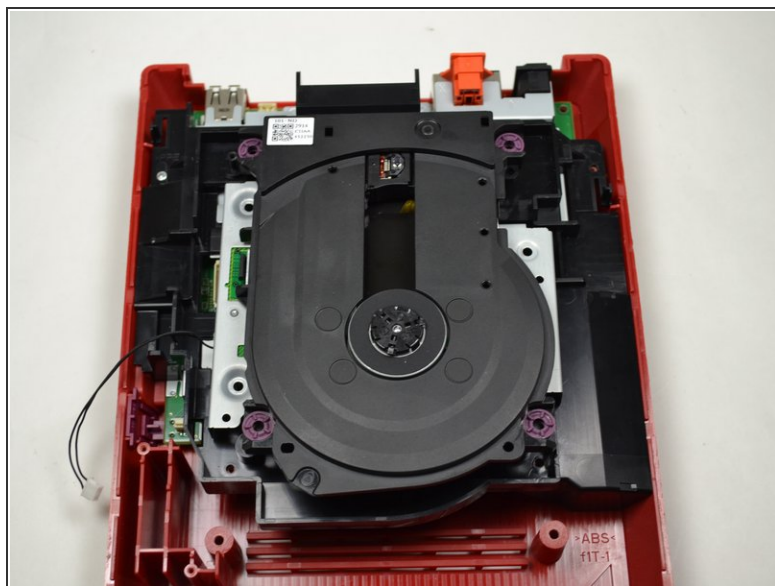
- Using your fingers, gently pull the pin connector to disconnect the power board from the disc drive.

Step 8



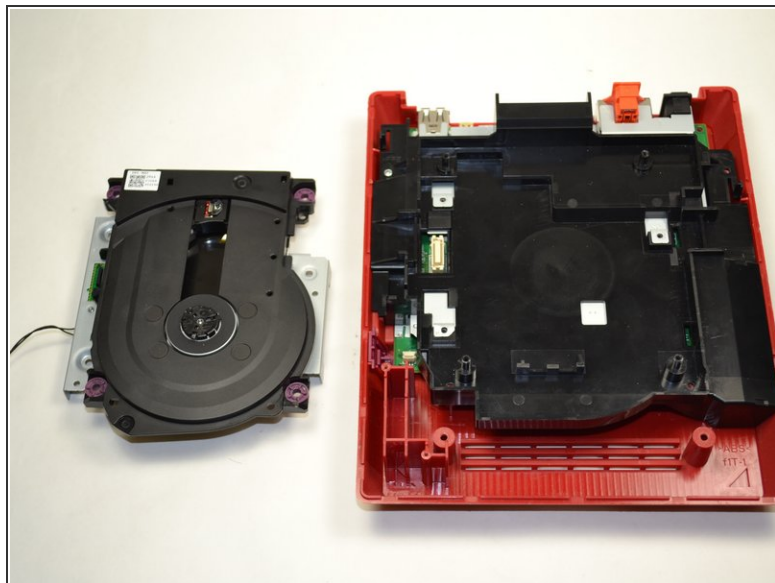
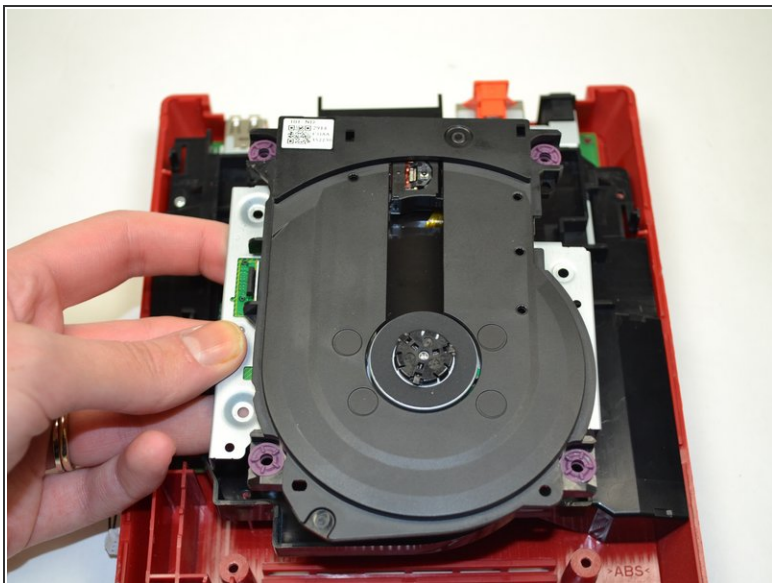
- Lift the power board from the console and set it aside.

Step 9 — Disc Drive



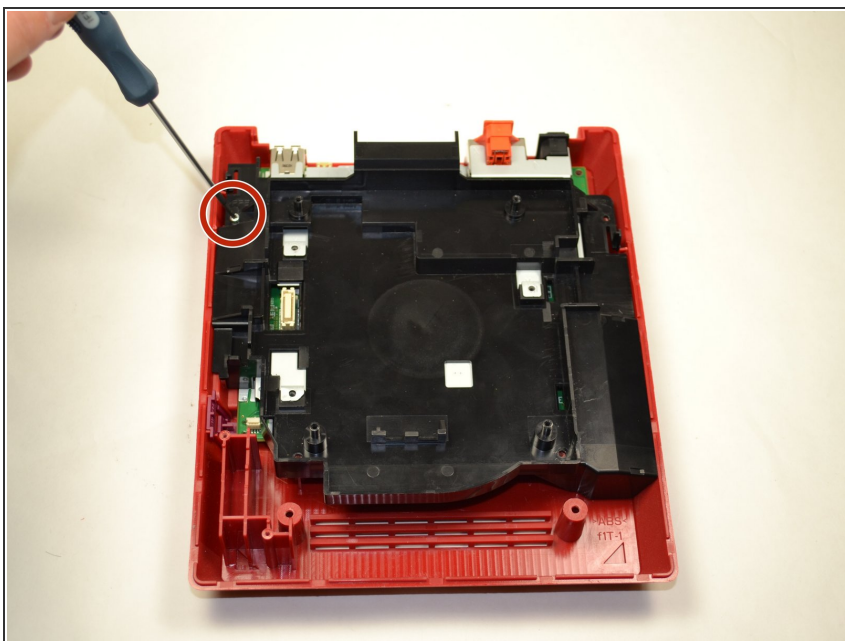
- Using a Phillips #0 Screwdriver, unscrew the four 6mm screws.

Step 10



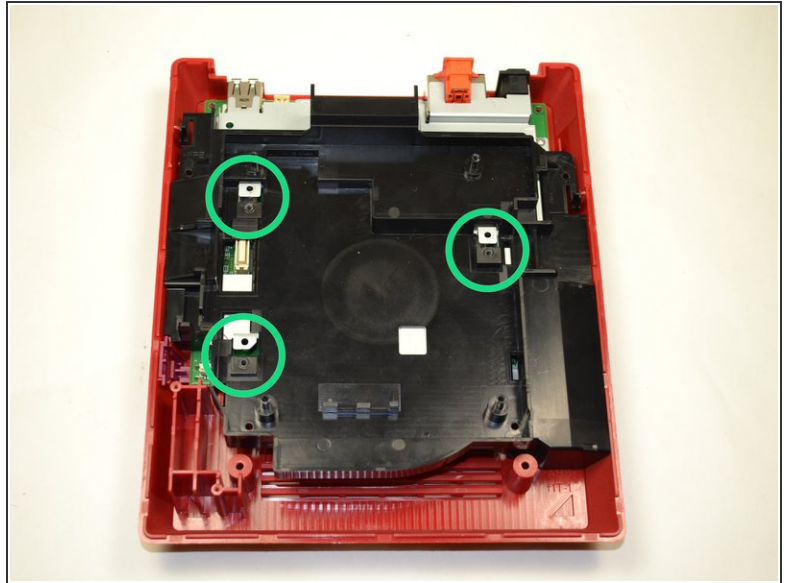
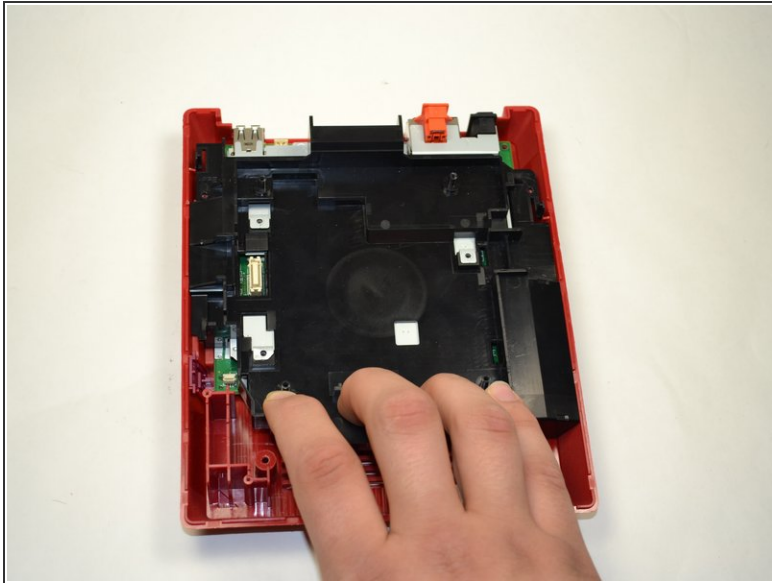
- Lift the disc drive out of the console and set it aside.

Step 11 — Motherboard



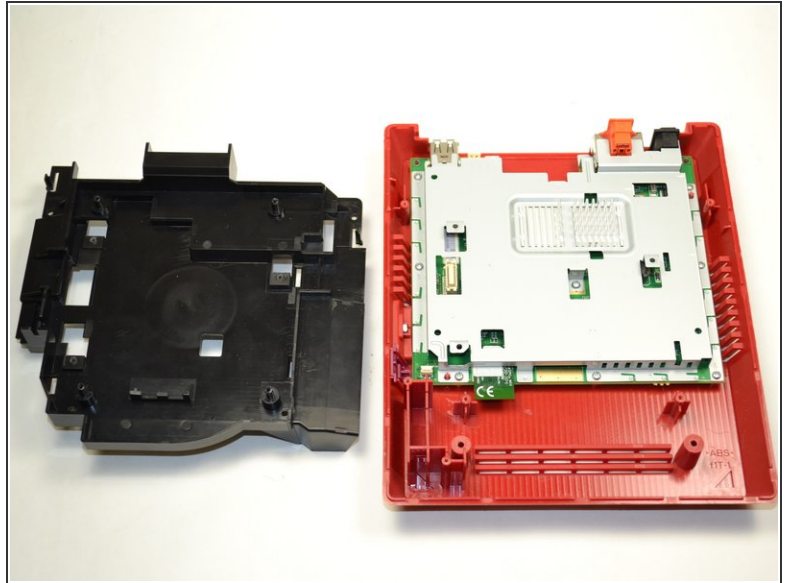
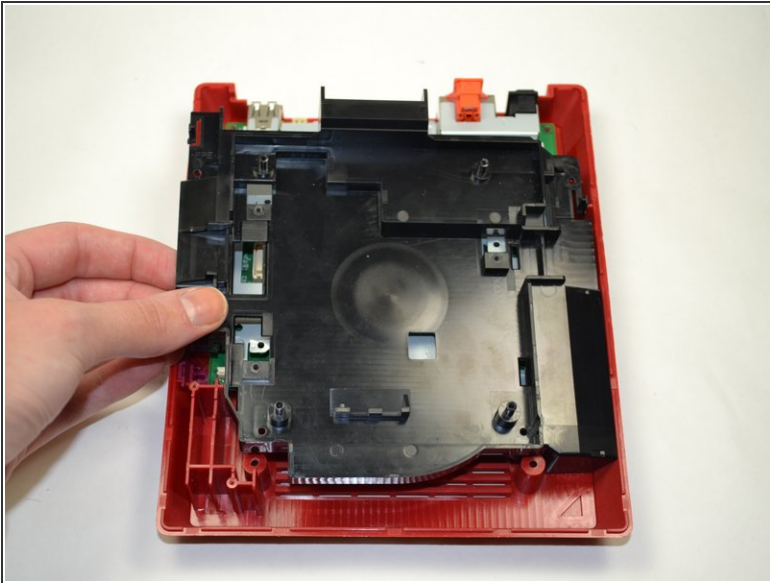
- Using a Phillips #0 Screwdriver, unscrew the 6mm screw at the top of the black tray.

Step 12



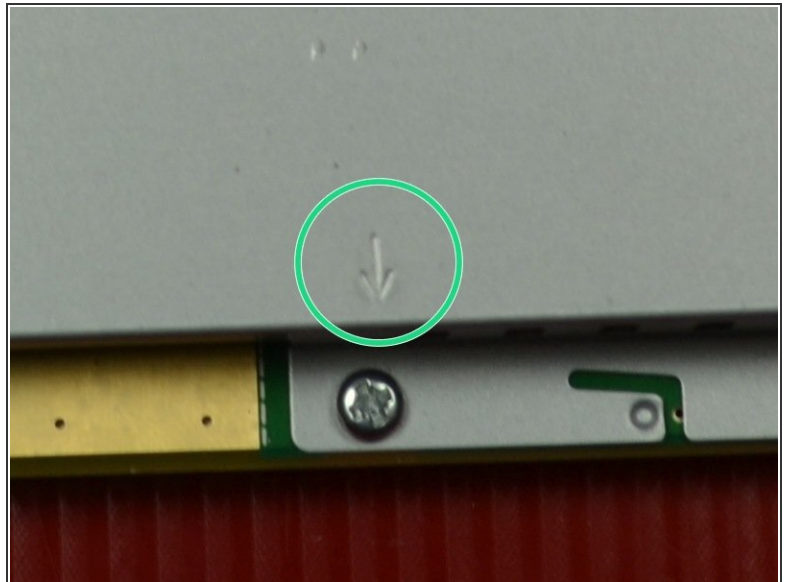
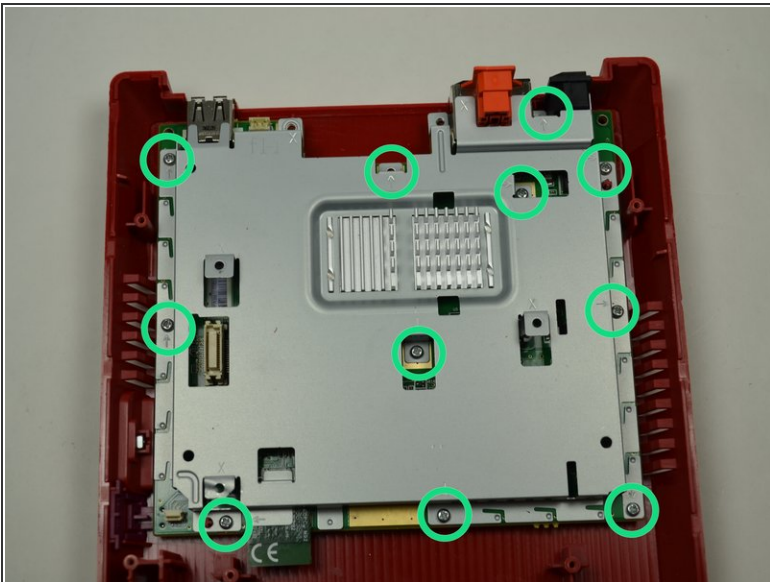
- Using your fingers, pull the black plastic tray toward you to loosen it from the console.
 - Make sure the black square pieces are separated from the metal square pieces before trying to lift out the tray.
- ⚠️ Trying to remove the tray before it is completely loosened may result in damage to the metal square pieces.

Step 13



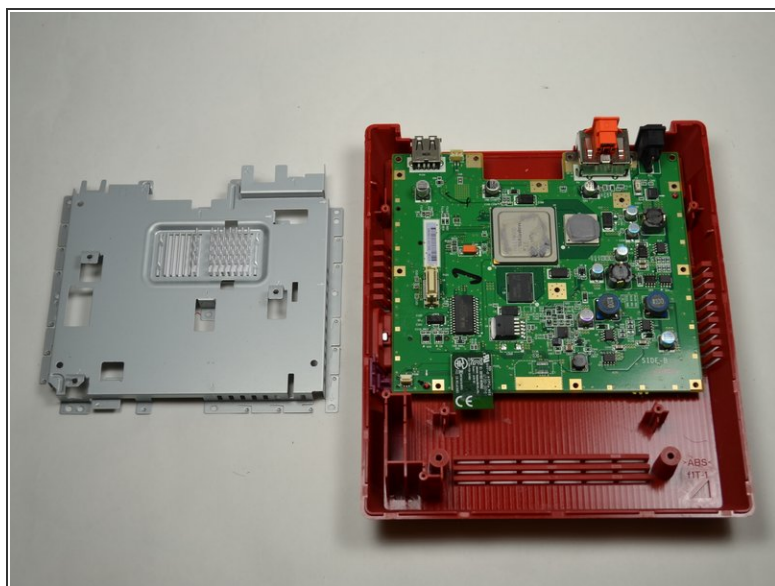
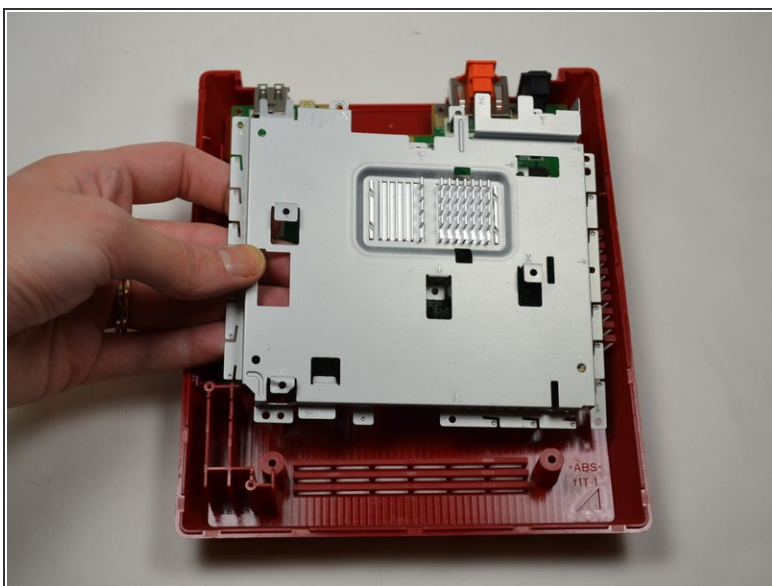
- Lift the plastic tray out of the console and set it aside.

Step 14



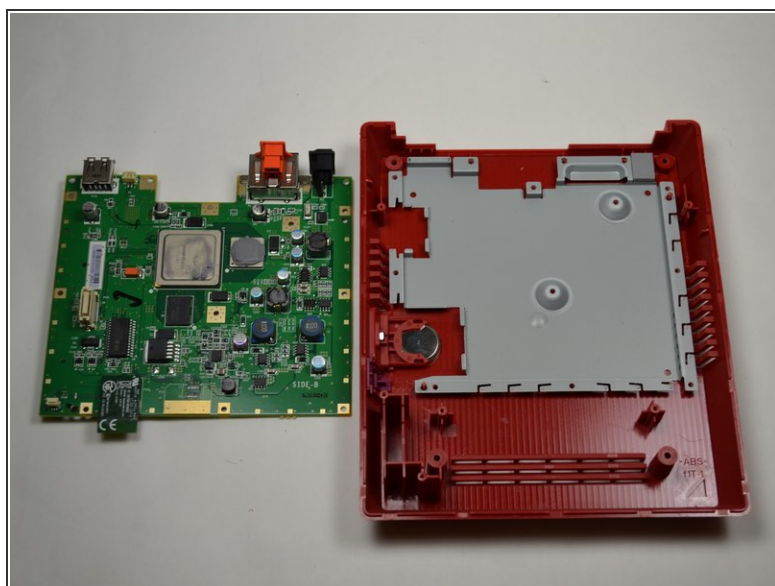
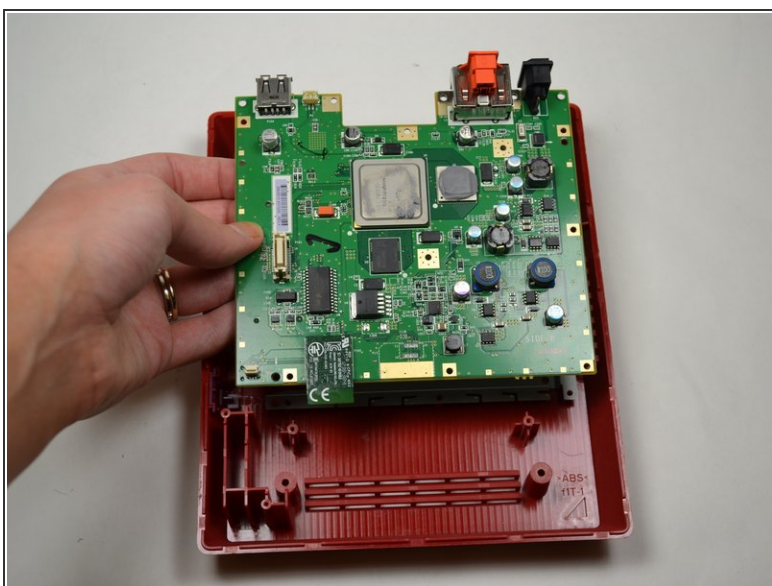
- Using a Phillips #0 Screwdriver, unscrew the eleven 5mm screws holding the silver metal piece to the console.
- ⓘ These screws are indicated by small arrows on the metal tray.

Step 15



- Lift out the metal tray and set it aside.

Step 16



- Lift out the motherboard and set it aside.

To reassemble your device, follow these instructions in reverse order.