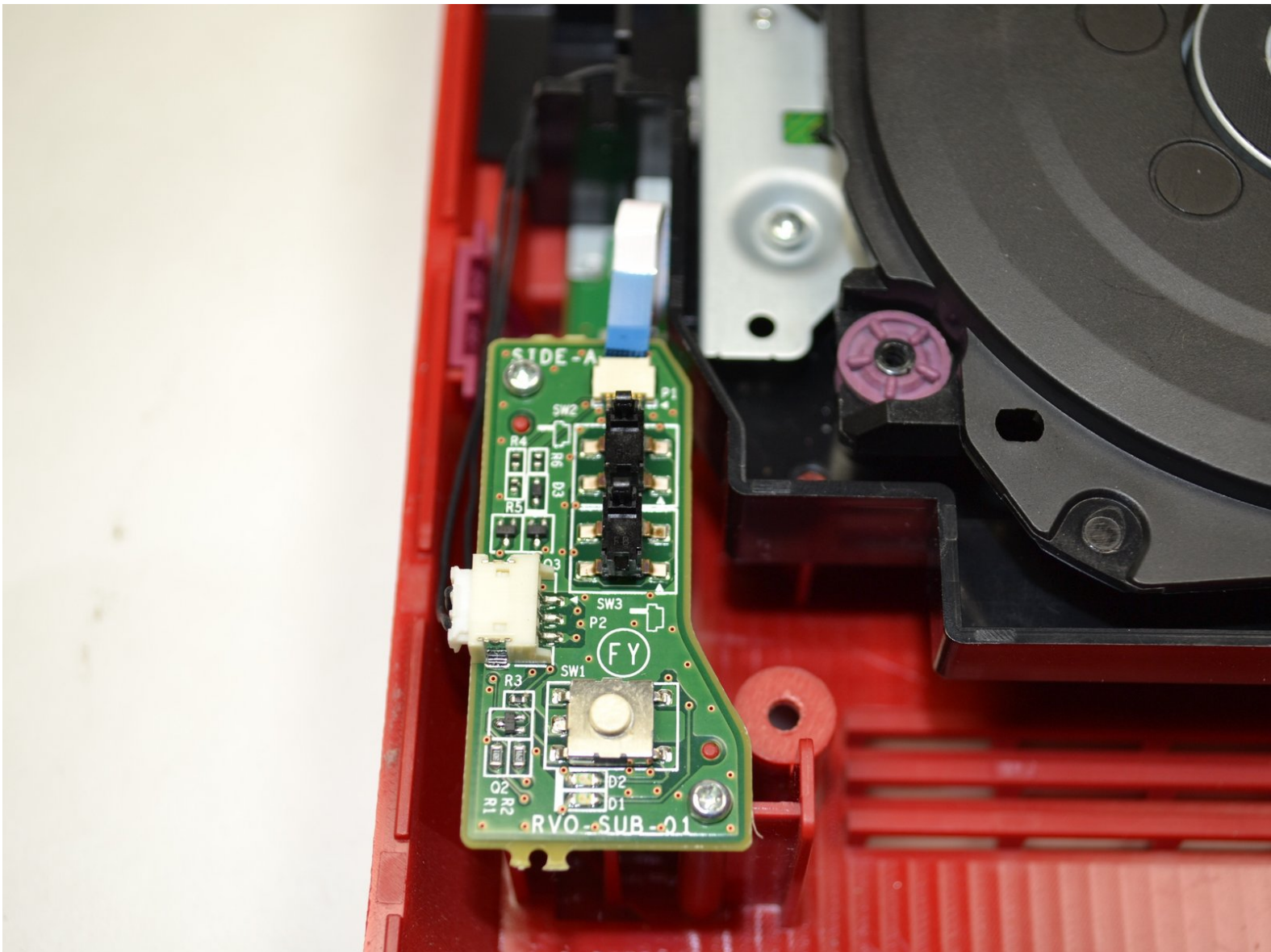




# Nintendo Wii mini Power Board Replacement

Replace a broken power board in your Nintendo Wii mini.

Written By: Kristin Anderson



# INTRODUCTION

Use this guide to replace the power board on your Nintendo Wii mini.



## TOOLS:

- [Phillips #0 Screwdriver](#) (1)
- [iFixit Opening Tools](#) (1)



## PARTS:

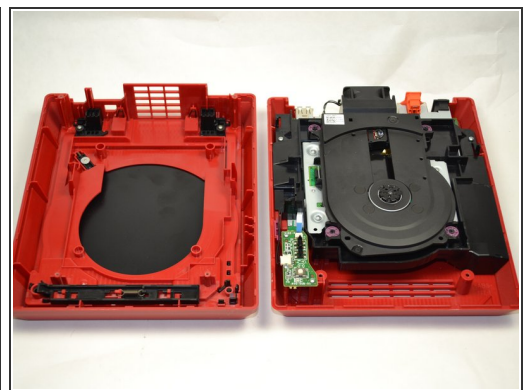
- [Nintendo Wii mini Power Button Board](#) (1)

## Step 1 — Upper Case



- Turn the Wii mini upside down.
- Remove the two rubber feet at the back of the console to reveal the hidden screws.
- Remove the four 6mm Phillips #0 screws.

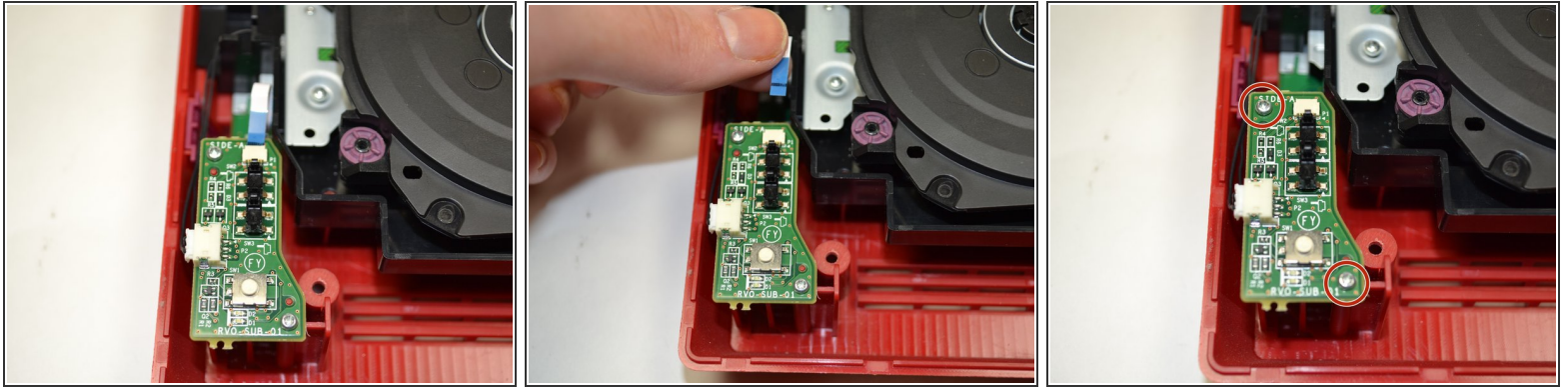
## Step 2



- Turn the Wii mini right-side up.
- Run a plastic opening tool around the middle edge of the console to loosen the top piece.
- Gently lift the top piece of the console and set it aside.

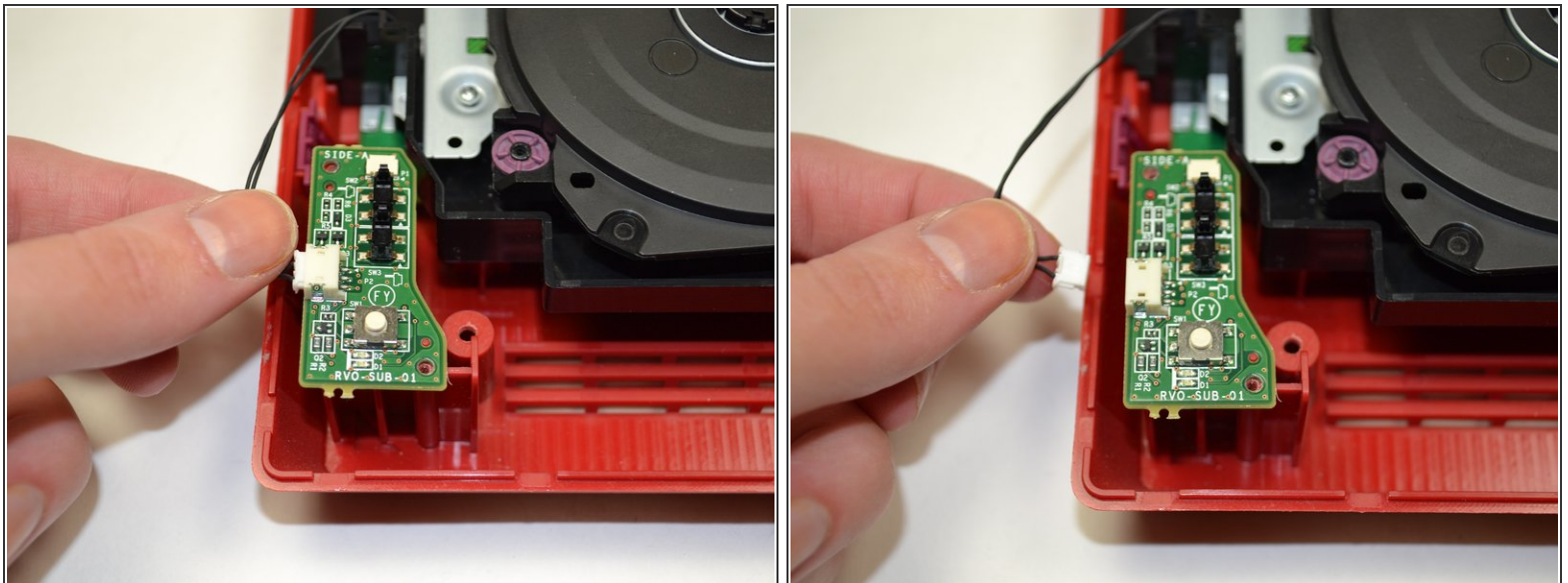


## Step 3 — Power Board



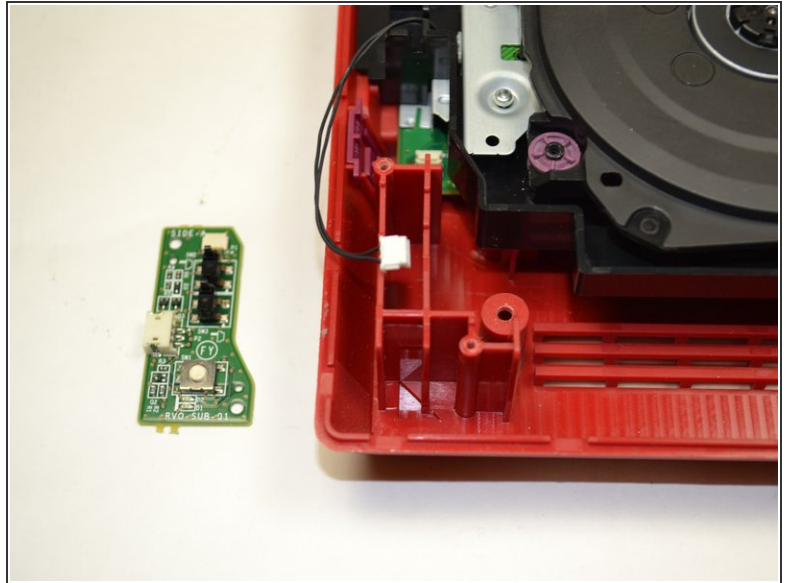
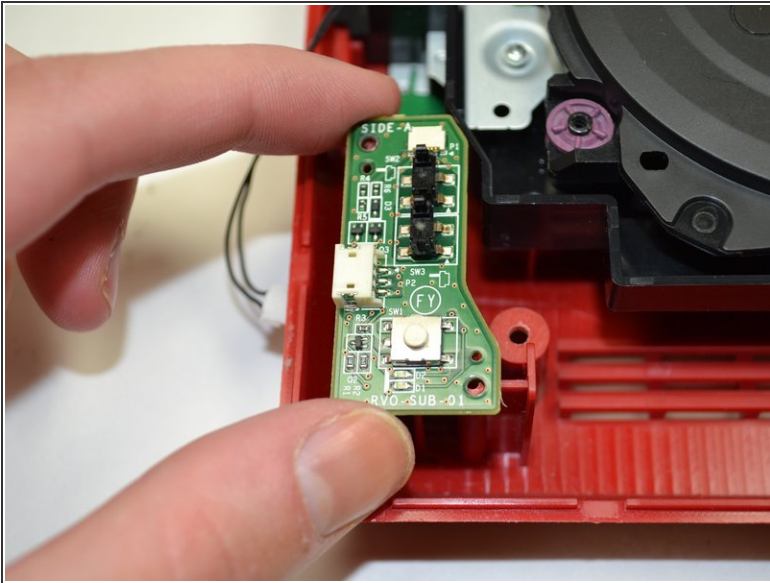
- Using your fingers, slide out the blue ribbon cable from the top of the power board.
- Using a Phillips #0 Screwdriver, unscrew the two 4mm screws at the top and bottom of the power board.

## Step 4



- Using your fingers, gently pull the pin connector to disconnect the power board from the disc drive.

## Step 5



- Lift the power board from the console and set it aside.

To reassemble your device, follow these instructions in reverse order.