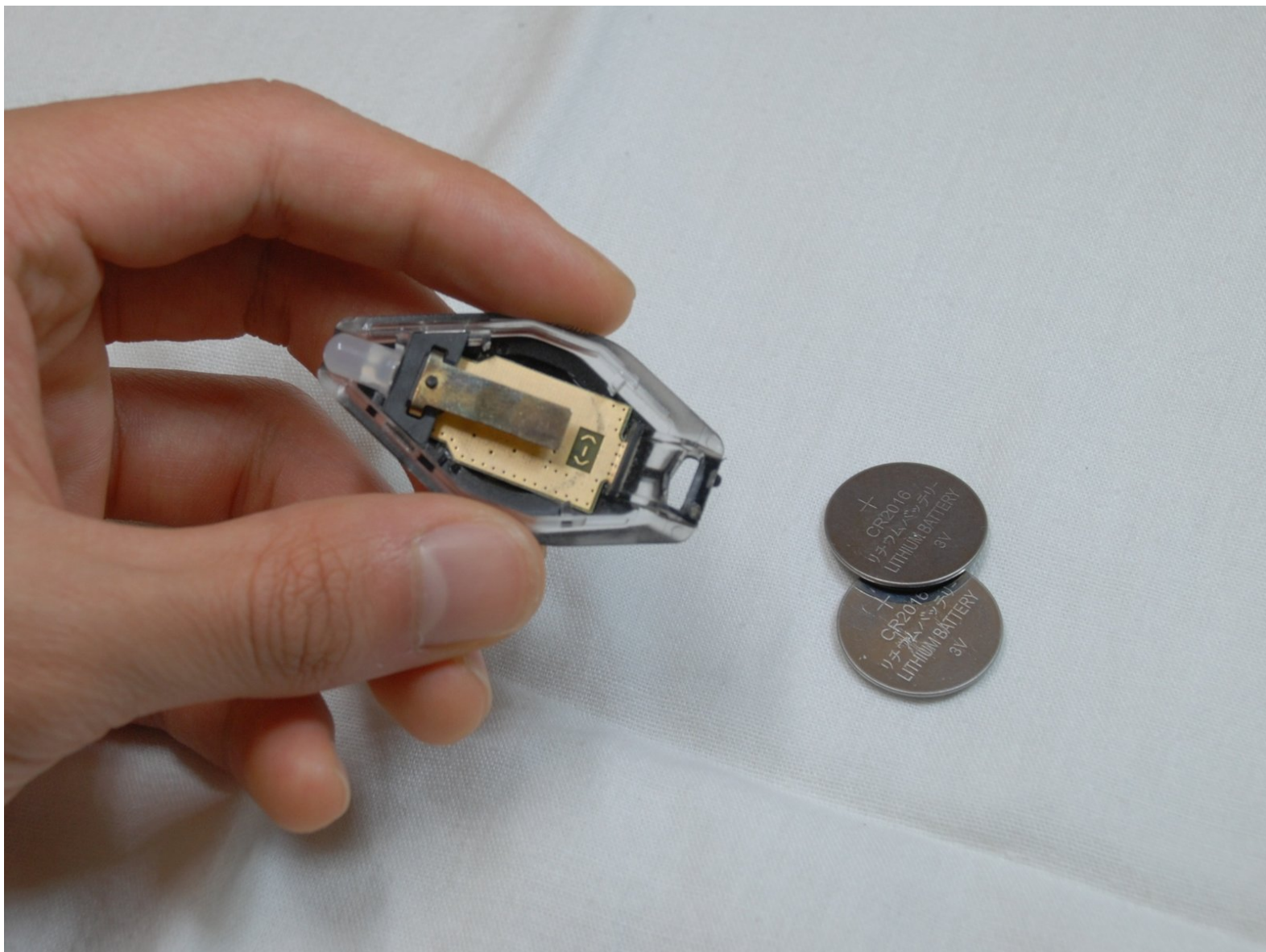




# Nite Ize Inova Microlight Battery Replacement

Replacing the dead batteries in a Nite Ize Inova Microlight

Written By: Jennifer Tabadero



# INTRODUCTION

Use this guide to replace the batteries of a microlight.



## TOOLS:

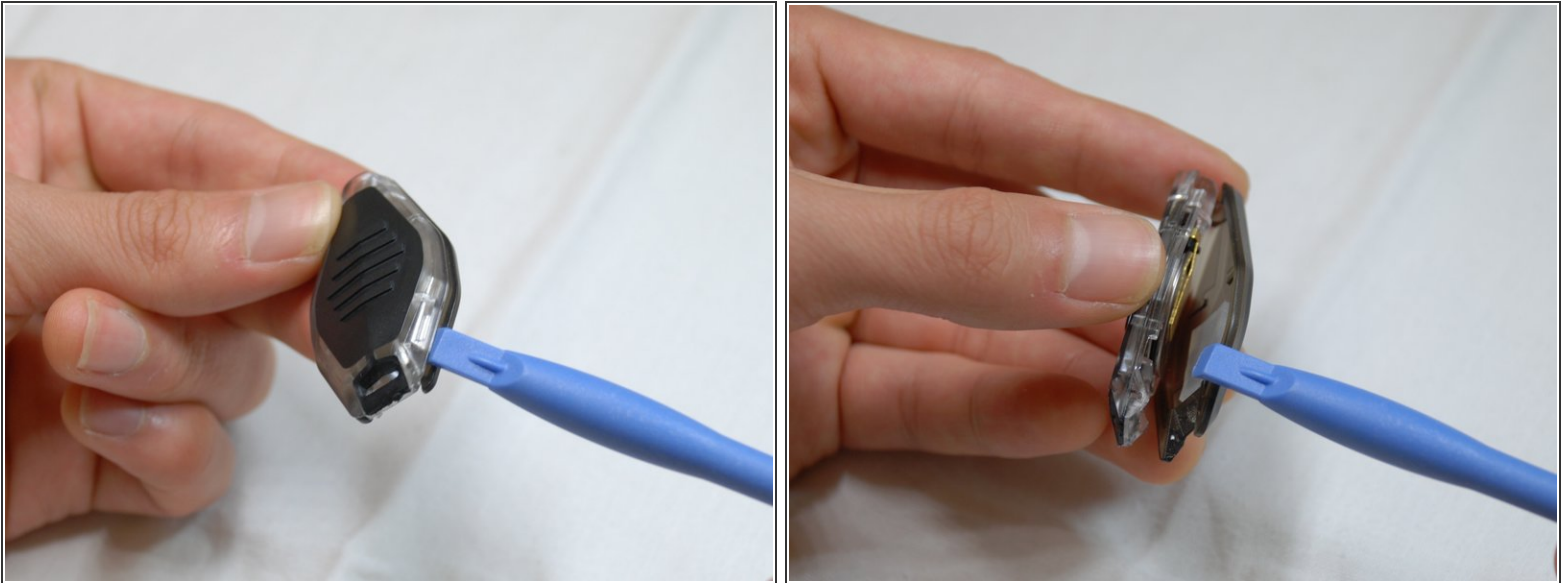
- [iFixit Opening Tools](#) (1)
- [Tweezers](#) (1)



## PARTS:

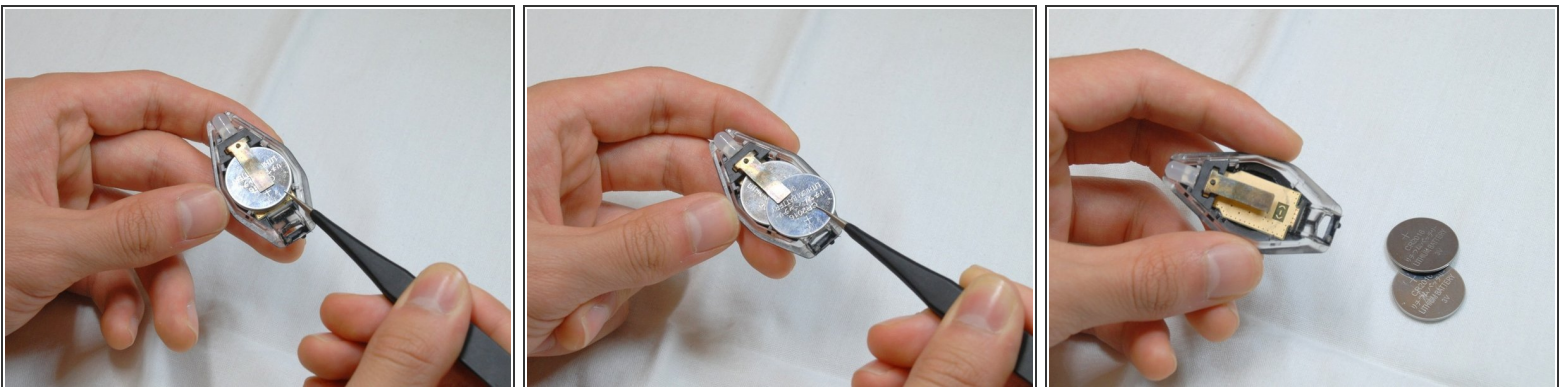
- [CR 2016 3V Lithium Batteries](#) (2)

## Step 1 — Case Removal




- Insert the plastic opening tool into the seam of the device.

## Step 2 — Battery Removal



- Squeeze the top battery using a tweezer and pull the battery away from the light bulb.
- Repeat this step for the bottom remaining battery.

 Do not pull up on the battery as this will bend the metal contact.

To reassemble your device, follow these instructions in reverse order.