



# Nite Ize Inova Microlight Casing Replacement

Change a broken casing.

Written By: Jennifer Tabadero



---

## INTRODUCTION

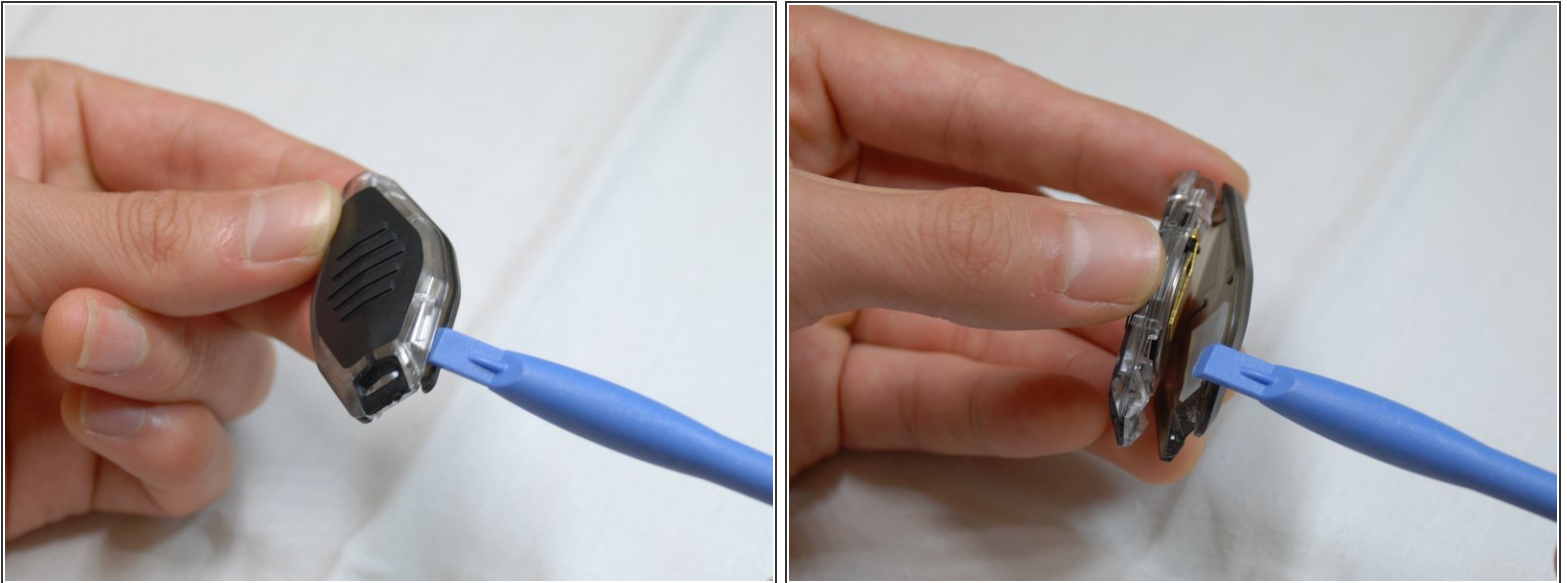
Use this guide to change the case of a microlight.



### TOOLS:

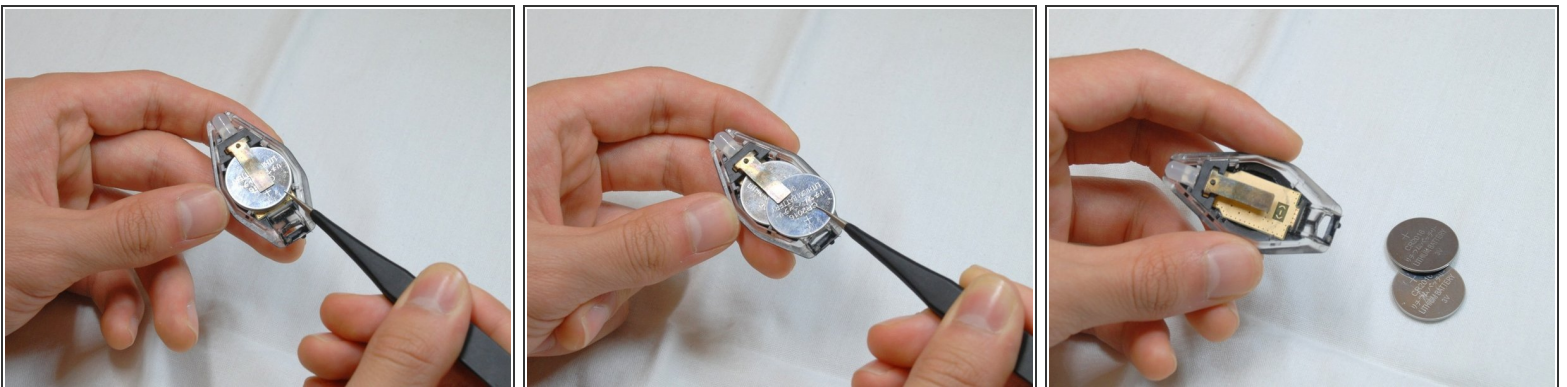
- [iFixit Opening Tools](#) (1)
  - [Tweezers](#) (1)
-

## Step 1 — Case Removal




- Insert the plastic opening tool into the seam of the device.

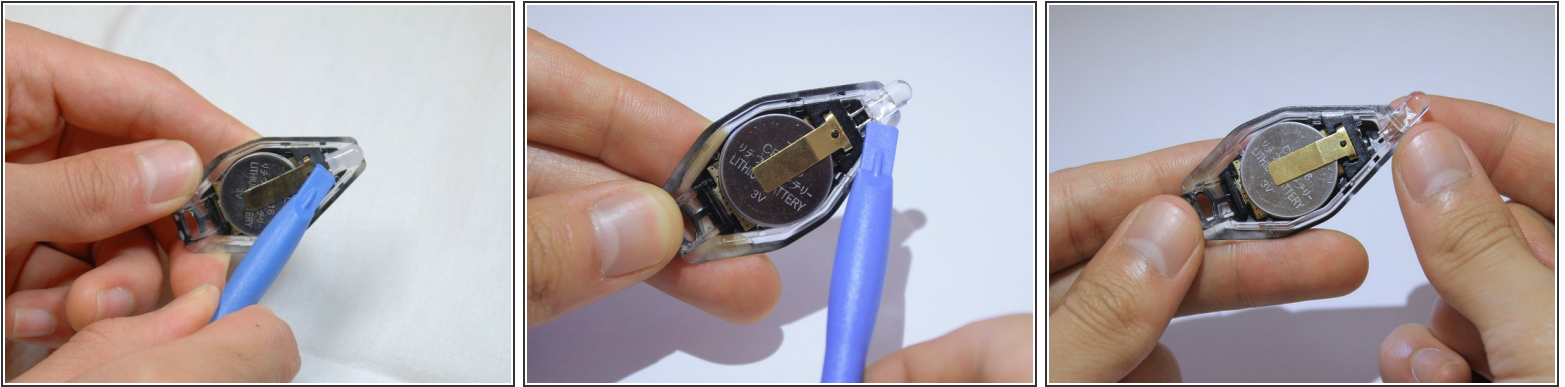
## Step 2 — Battery Removal



- Squeeze the top battery using a tweezer and pull the battery away from the light bulb.
- Repeat this step for the bottom remaining battery.

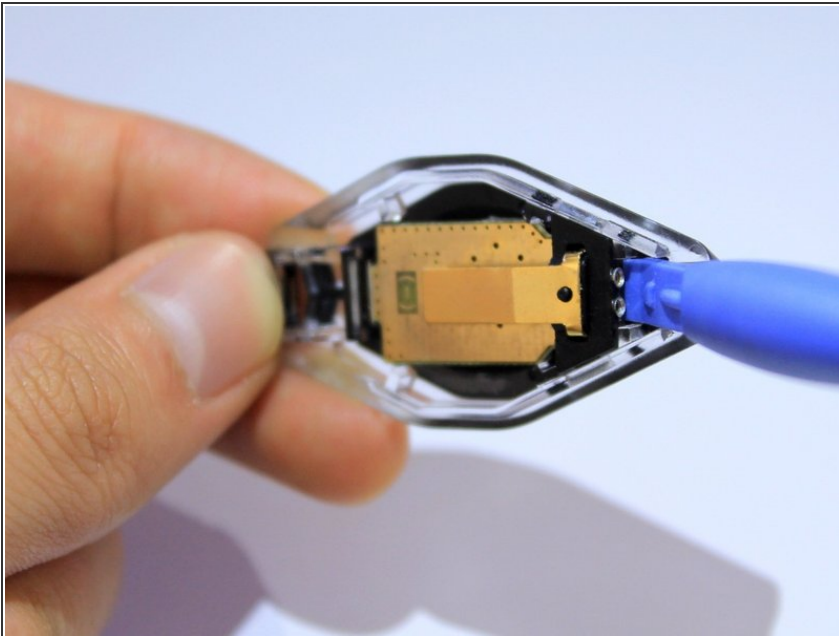
 Do not pull up on the battery as this will bend the metal contact.

### Step 3 — LED Light Removal



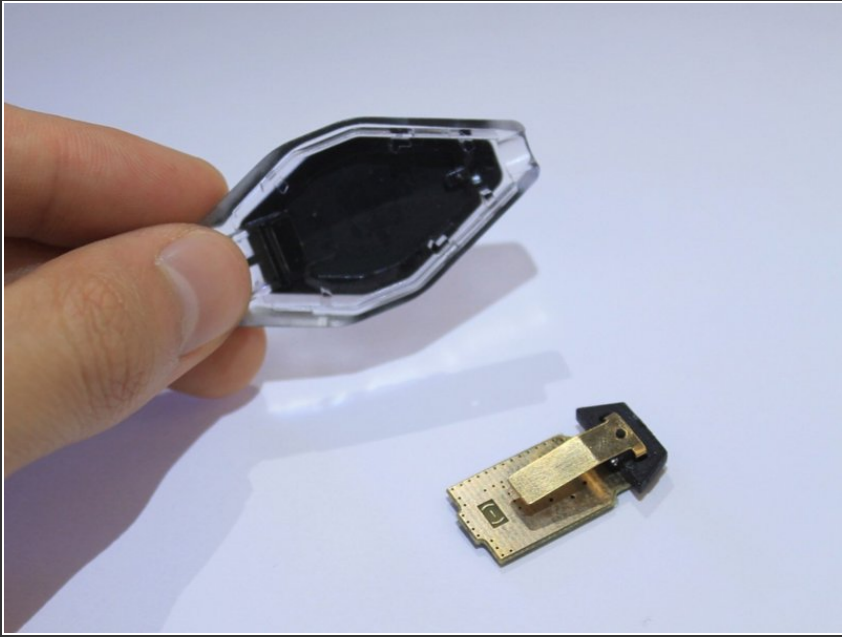
- Place the plastic opening tool below the LED lamp and push away from the device until you hear a click.
- Continue to remove the LED lamp the with your fingers.

### Step 4 — Logic Board Removal



- Place the plastic opening tool behind the logic board and bend away from the casing

## Step 5 — Logic Board Removal



- The logic board will pop out with ease.

To reassemble your device, follow these instructions in reverse order.