



# Noblecrown A8 Teardown

This guide will show you how to take apart the Noblecrown A8.

Written By: Lee



---

## INTRODUCTION

If the speaker suddenly malfunctions, and you want to pull it apart to see what happened, this guide will show you how.

---



### TOOLS:

- [Pro Tech Toolkit](#) (1)
  - [Soldering Iron](#) (1)
-

## Step 1 — Remove the Bottom




- Remove the rubber feet. There will be four screws.
- Remove the screws and gently pry out the bottom piece.

⚠ Be careful not to snap any plastic legs.

## Step 2 — Remove the Speaker grill



- Remove the two screws above the USB charging port and pry out the back panel.
  - Remove the four screws that hold the grill down.
  - Pull the grill out.
-  Force will be needed to pull out the grill.



### Step 3 — Remove the Speaker Driver



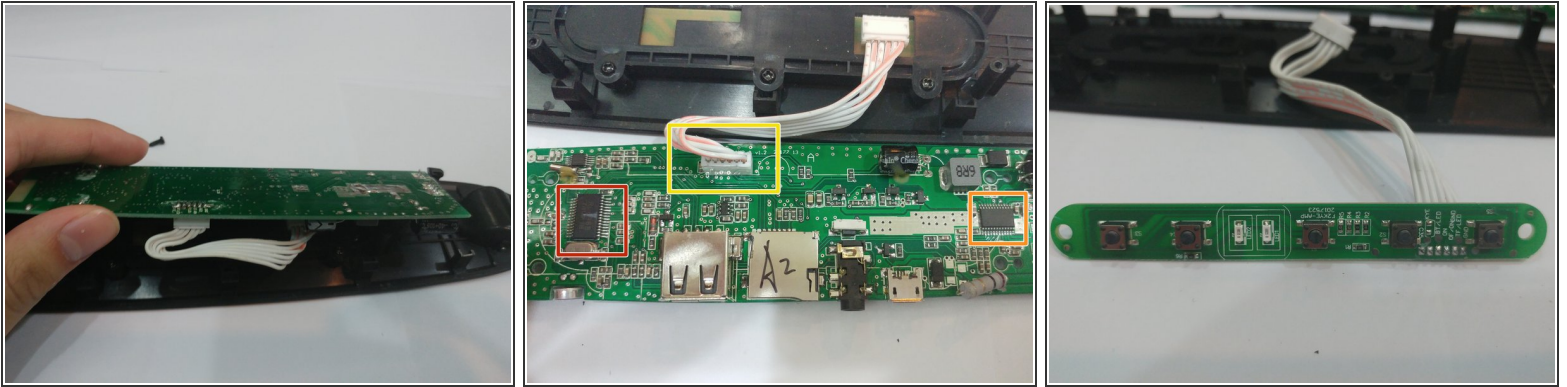
- Remove all four screws on the speaker.
- De-solder the wires.
- ⓘ There are red stripes on the positive wire. Remember to connect it to the positive terminal of the speaker when re-installing.

### Step 4



- Pry off the top cover.
- Remove the two sets of cable. The upper is connected to the speakers, and the bottom is to the battery.

## Step 5



- Unscrew the four screws holding the circuit board to the cover.
- Unplug the cable in the yellow box. This separates the control board and the amplifier board.
- Bluetooth transmitter IC
- Class-D amplifier