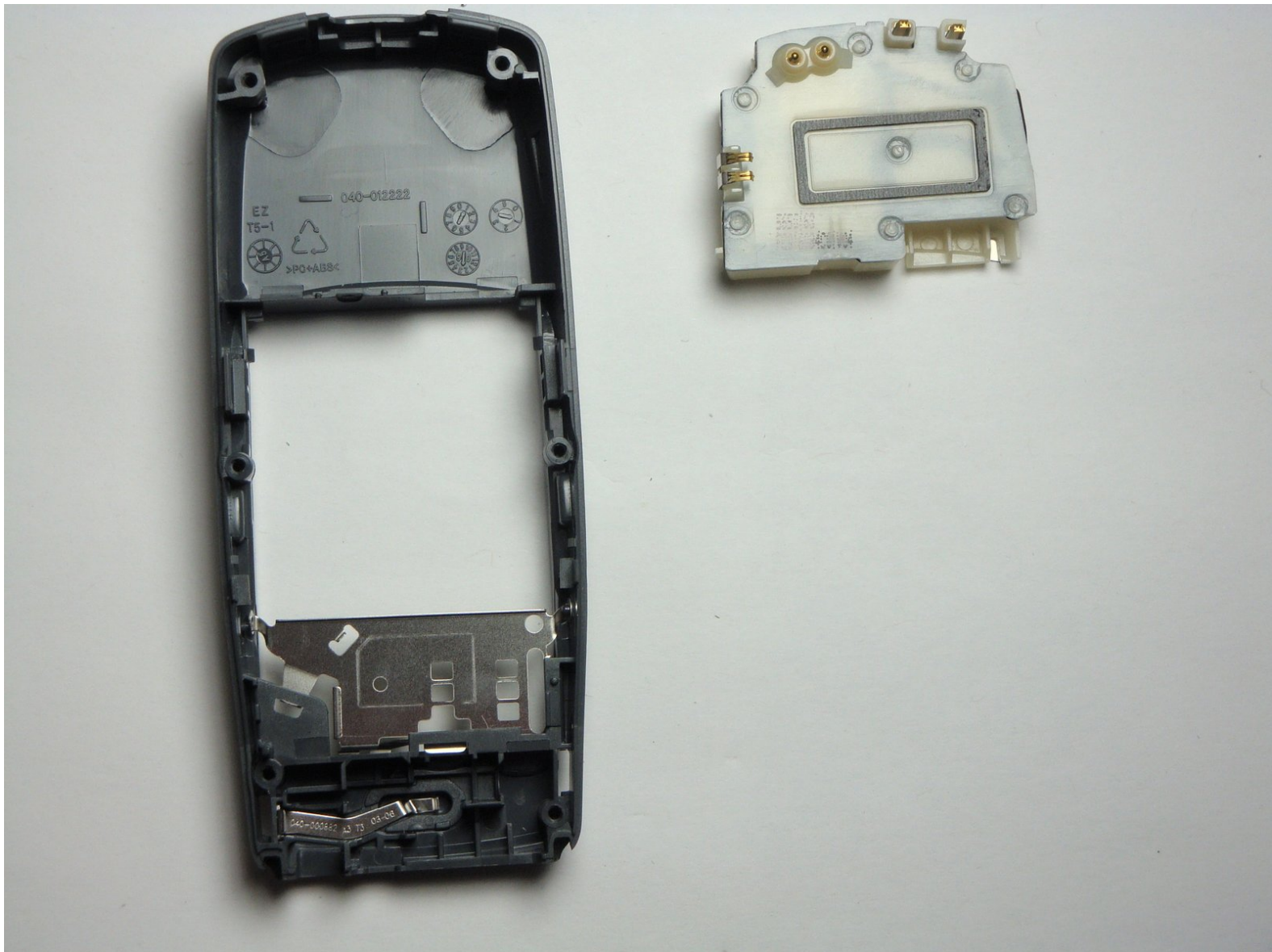




Nokia 2128i Power Unit Replacement

This guide will show you how to replace your phone's power unit.

Written By: Andres Echeverria





TOOLS:

- [T6 Torx Screwdriver](#) (1)
 - [iFixit Opening Tools](#) (1)
-

Step 1 — Battery



- Be sure cell phone is off before you begin to disassemble the phone.
- Press the button on the bottom of the back of the cell phone.
- Slide rear panel down and remove it.

Step 2



- Using your fingernail, pry the back of the battery upwards and pull out.

Step 3 — Faceplate



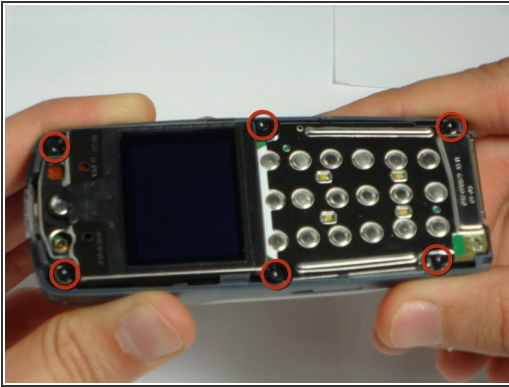
- Insert the plastic opening tool under the faceplate.
- Separate the faceplate from main body by twisting the prying tool with some force.
- The faceplate is held by three plastic fasteners, so pry evenly on both sides of phone.

Step 4 — Keypad



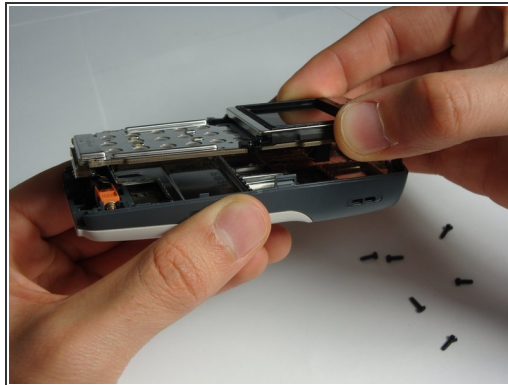
- With the faceplate removed, simply peel off rubber key pad and remove.

Step 5 — Motherboard Assembly



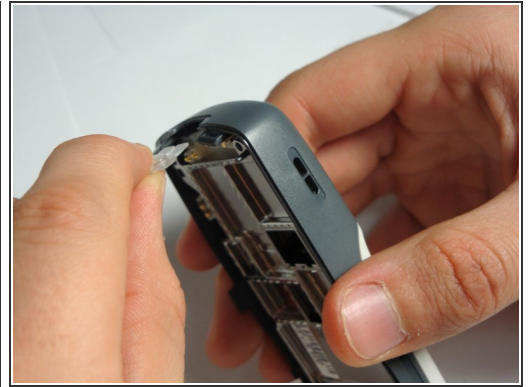
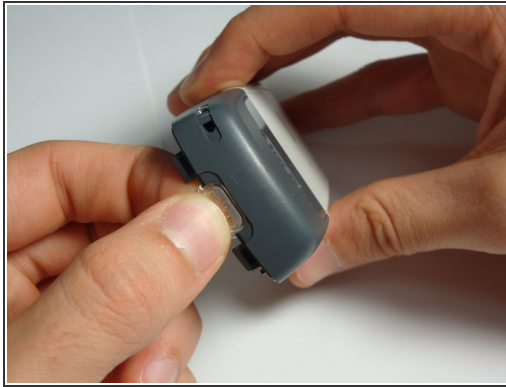
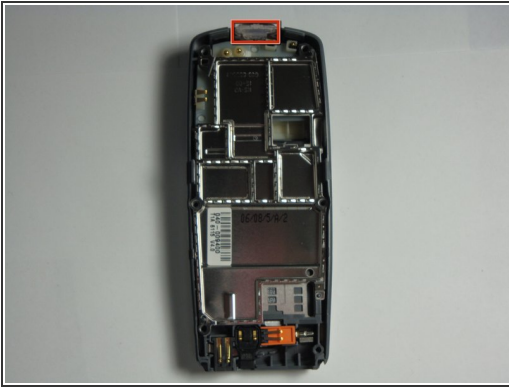
- Locate and remove the six screws on the front of the phone using a T6 Torx.
- All 6 screws are 6.9mm long.

Step 6



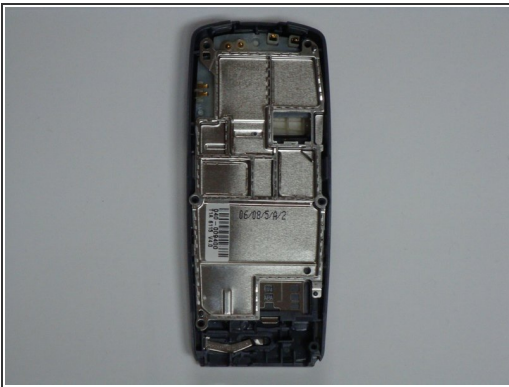
- After removing screws, lift the motherboard assembly straight off the cell phone body.

Step 7 — Power Button



- With the motherboard and LCD unit removed, gently pull the power button out of its housing.

Step 8 — Power Unit



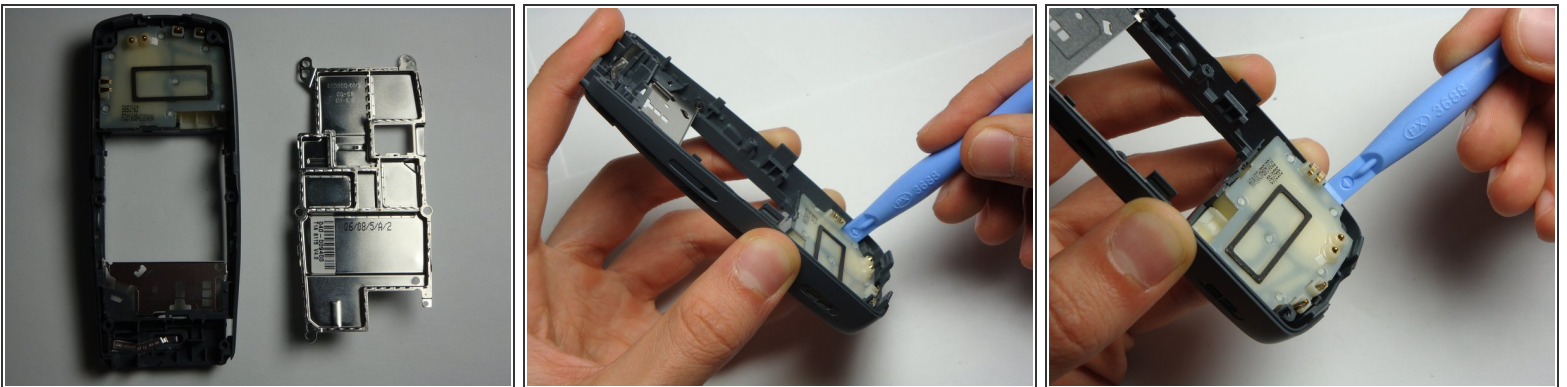
- Flip phone over and find the sticker that holds the metallic plating together with the phone's case.
- Pry off the portion of the sticker that is attached to the phone's case. Do not worry about removing the sticker from the metallic plate.

Step 9



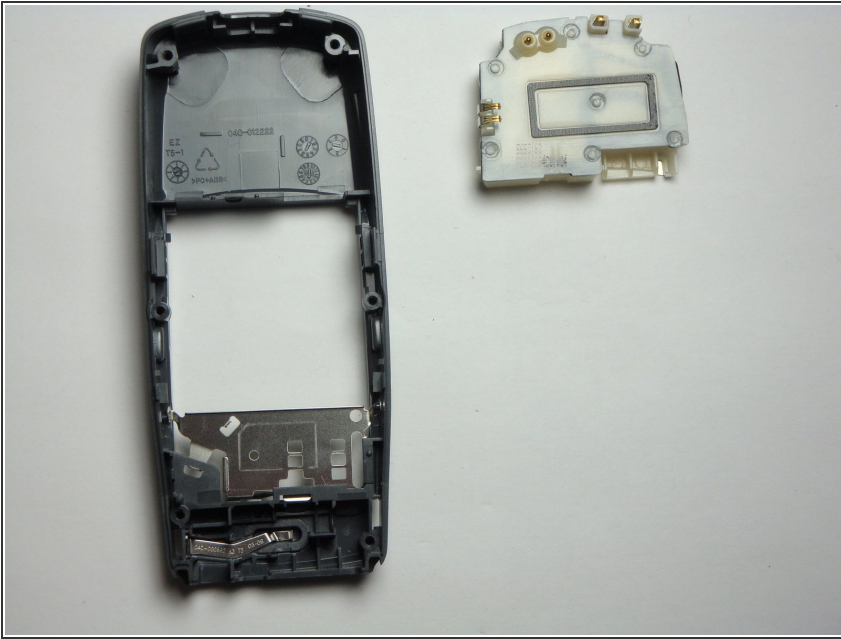
- Locate the small hook that holds the metallic plate and phone case together on the front side of the phone
- Place your thumbs on the backside of the metallic plate.
- Stretch phone casing outward to detach hook from metallic plating. Simultaneously push metallic plate outward to remove.

Step 10



- Pry out the power unit once the metallic plate has been removed.

Step 11



- Be sure to place the power unit back into the phone's case with the gold hardware pointing upward.

To reassemble your device, follow these instructions in reverse order.