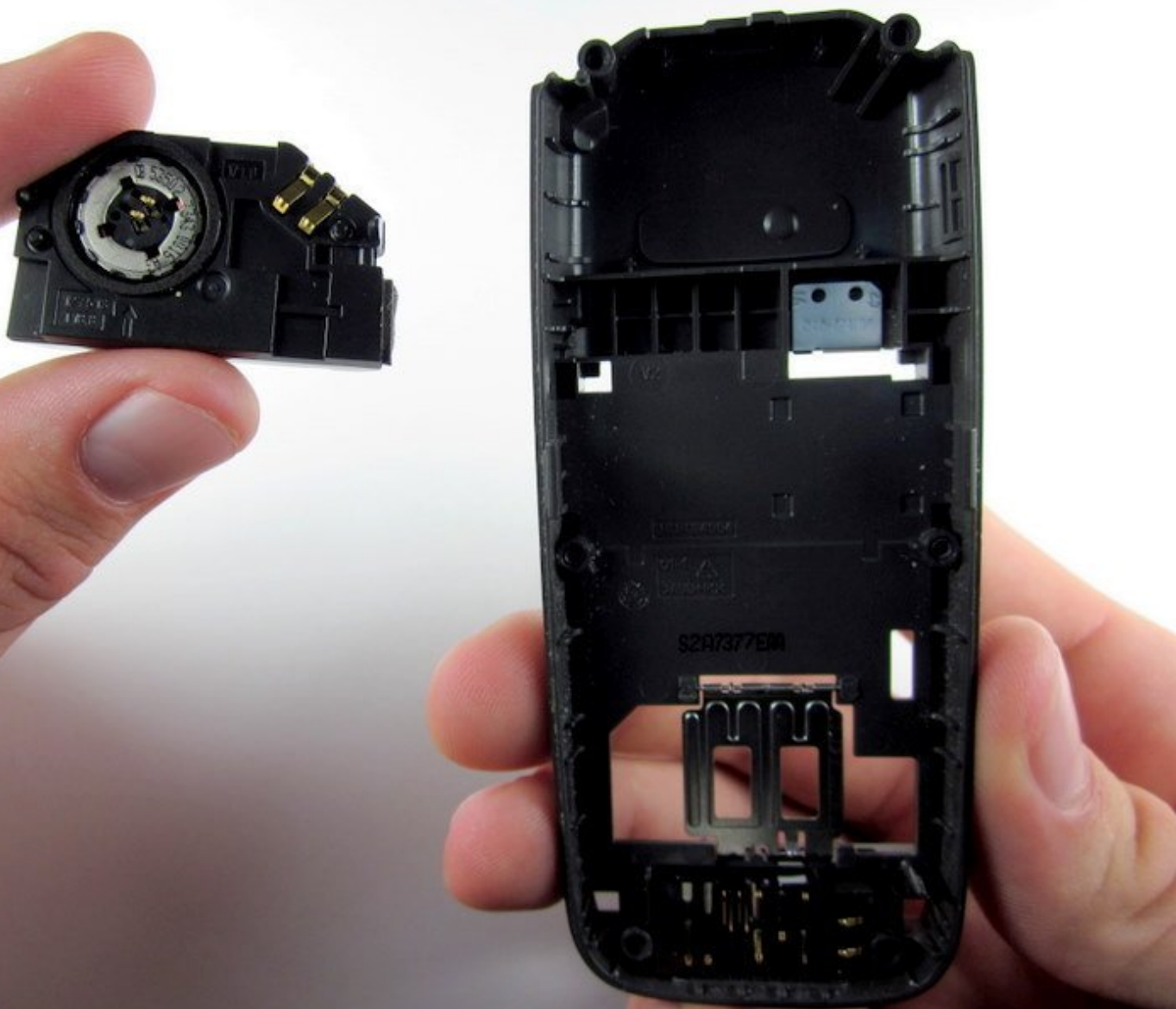




Nokia 2610 Speaker Replacement

This guide will show you how to replace the speaker.

Written By: Taylor Hinsdale



INTRODUCTION

After you have successfully completed the faceplate and circuit board removal guide this guide will show you how to replace the speaker



TOOLS:

- [iFixit Opening Tools](#) (1)
 - [T6 Torx Screwdriver](#) (1)
-

Step 1 — Battery and Sim Card



- Place your thumb on the middle of the back cover and push it toward the bottom of the phone to slide the cover off.

Step 2



- Use a plastic opening tool (or your finger) to gently pry the battery out of the battery slot on the back of the phone.

Step 3



- Lift the metal sim card holder (at the bottom of the battery slot) up and carefully pry the sim card out of its slot with a plastic opening tool or your finger.
- After removal, lower the metal sim card holder into its original position.

Step 4 — Front Pannel



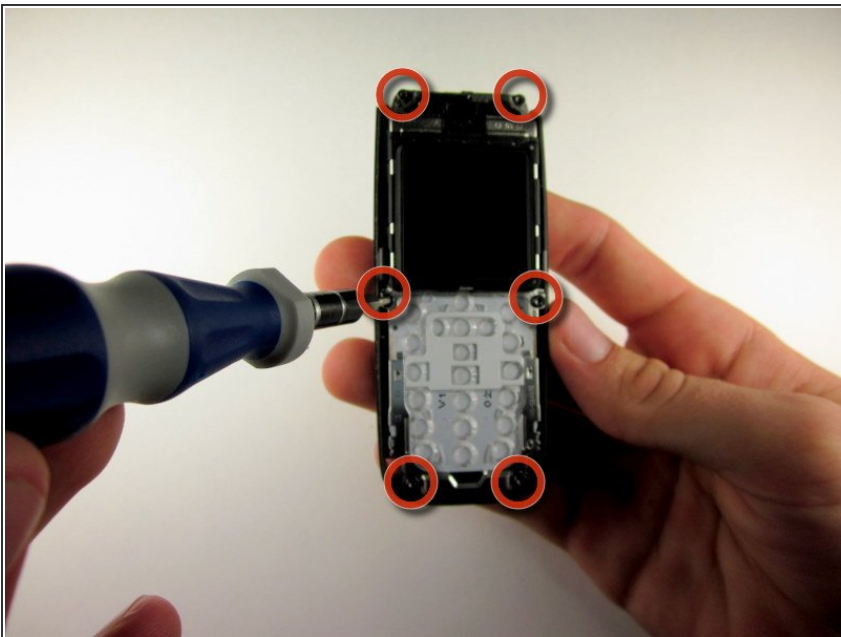
- Insert the plastic opening tool into the crack between the front and back panels.
- Gently pry the front cover away from the back cover while sliding the plastic opening tool towards the top of the phone.

Step 5



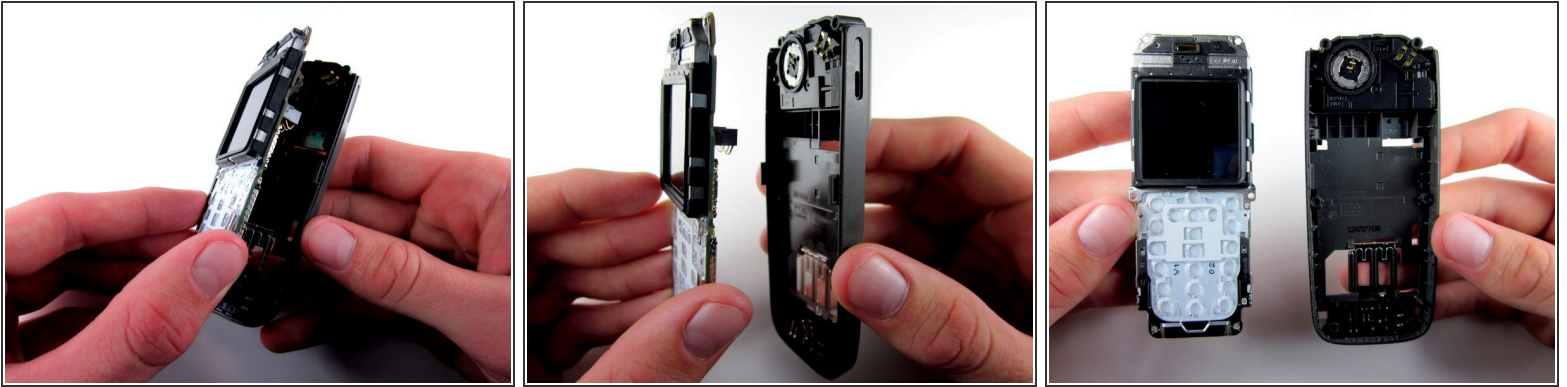
- Lift the bottom of the front cover away from the phone.
 - Continue lifting until the top of the front cover is fully removed from the phone.
- i** Note: To replace the Keypad, gently lift it out of the front cover. It is located below the clear viewing window.

Step 6 — Circuit Board



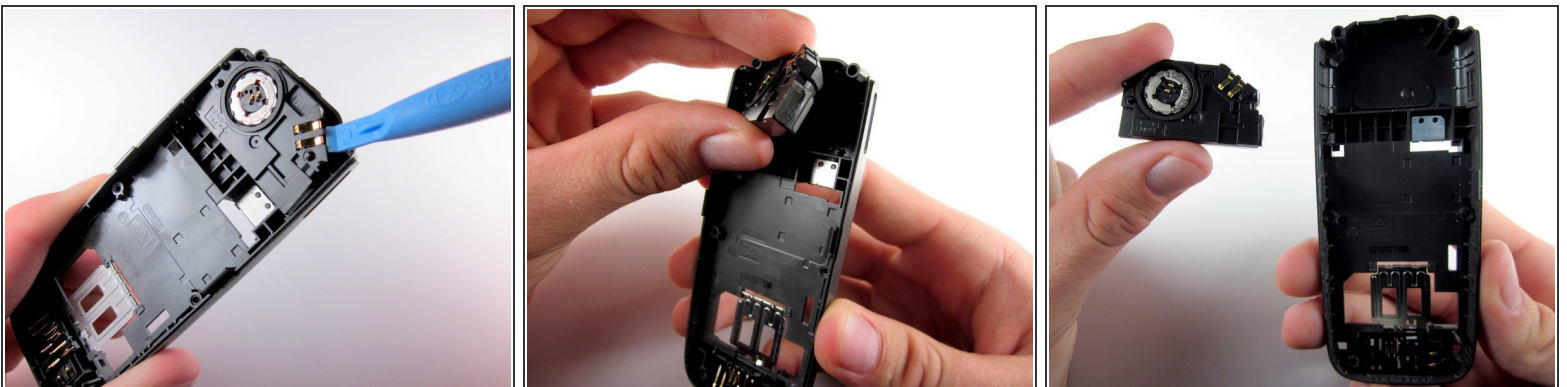
- Use the Torx screwdriver with the T6 attachmet to remove the 6 .4 mm screws around the outside of the circuit board.
- i** Note: Removing the 4 T6 screws around the screen will loosen it, so don't worry if the screen also separates from the circuit board.

Step 7



- Lift the circuit board out of the back cover.

Step 8 — Speaker



- Using the plastic opening tool, gently pry the speaker out of its slot in the back cover of the phone.
- ⓘ Note: The easiest way to remove the speaker is to insert the plastic opening tool in the upper right corner of the speaker.

To reassemble your device, follow these instructions in reverse order.