



Nokia 6010 Charger Connector Replacement

Written By: Nicholas Hanne



INTRODUCTION

Use this guide to remove and replace the charger connector in the Nokia 6010.



TOOLS:

- [Spudger](#) (1)
 - [T6 Torx Screwdriver](#) (1)
-

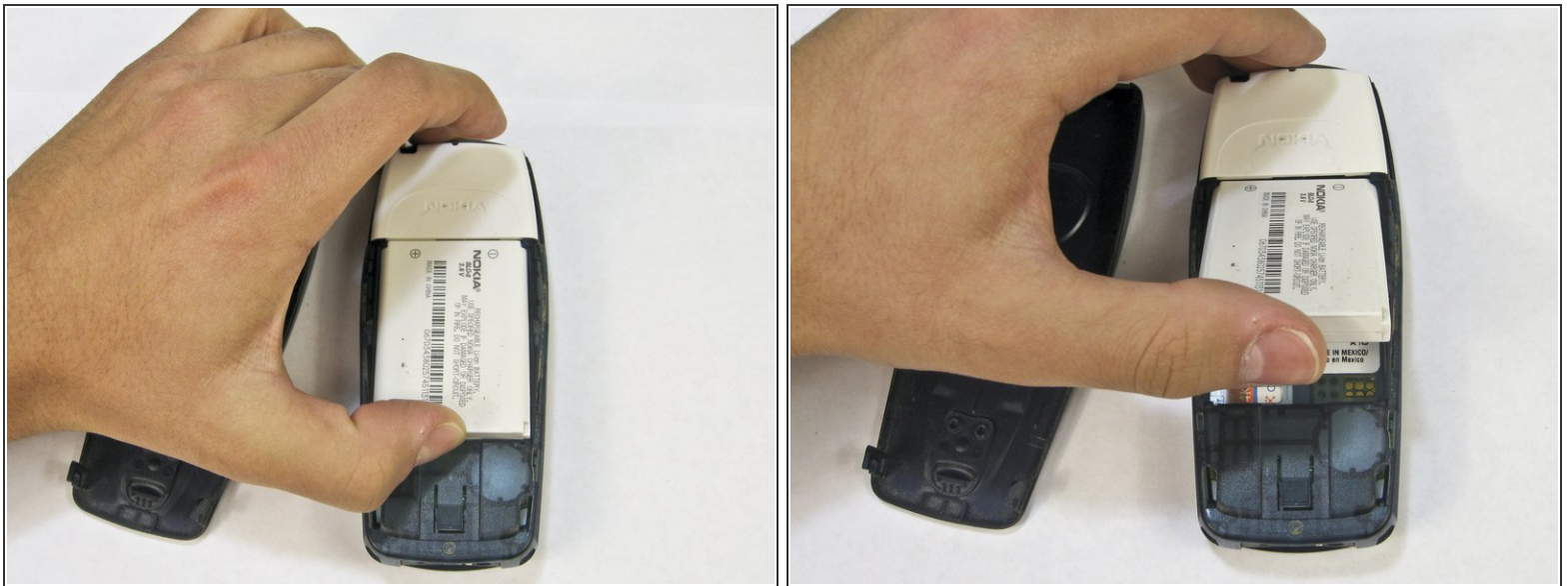
Step 1 — Battery



- Press the small tab on the bottom of the back of the phone.
- Push the back case upward towards the power button. The back case will then pop off.

⚠ It requires some force, so be careful.

Step 2



- Lift the battery near the bottom and pry up.

Step 3 — SIM Card



- With one hand, press the ridged tab near the visible side of the SIM card.
- Slide the card out with your other hand.

Step 4 — Keypad



- Grip the phone on either the sides, the top, or the bottom.
- Pull the front case away from the rest of the phone.
- ❗ There are no special tabs to keep it in place so it should wiggle free easily.

Step 5



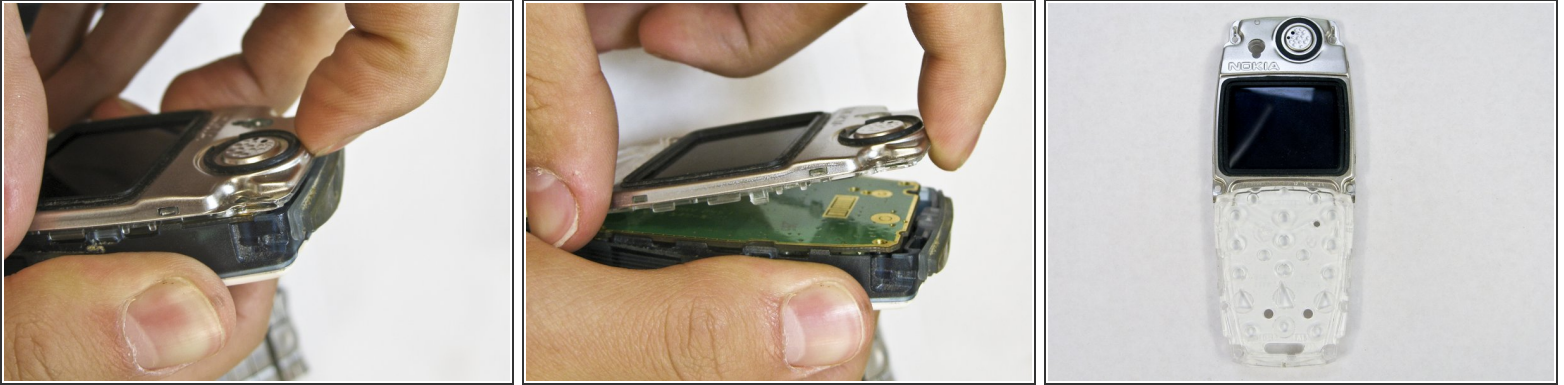
- Lift the keypad away from the body of the phone.
- ⓘ The keypad is the rubber-backed piece with the number keys.

Step 6 — LCD Screen and Speaker



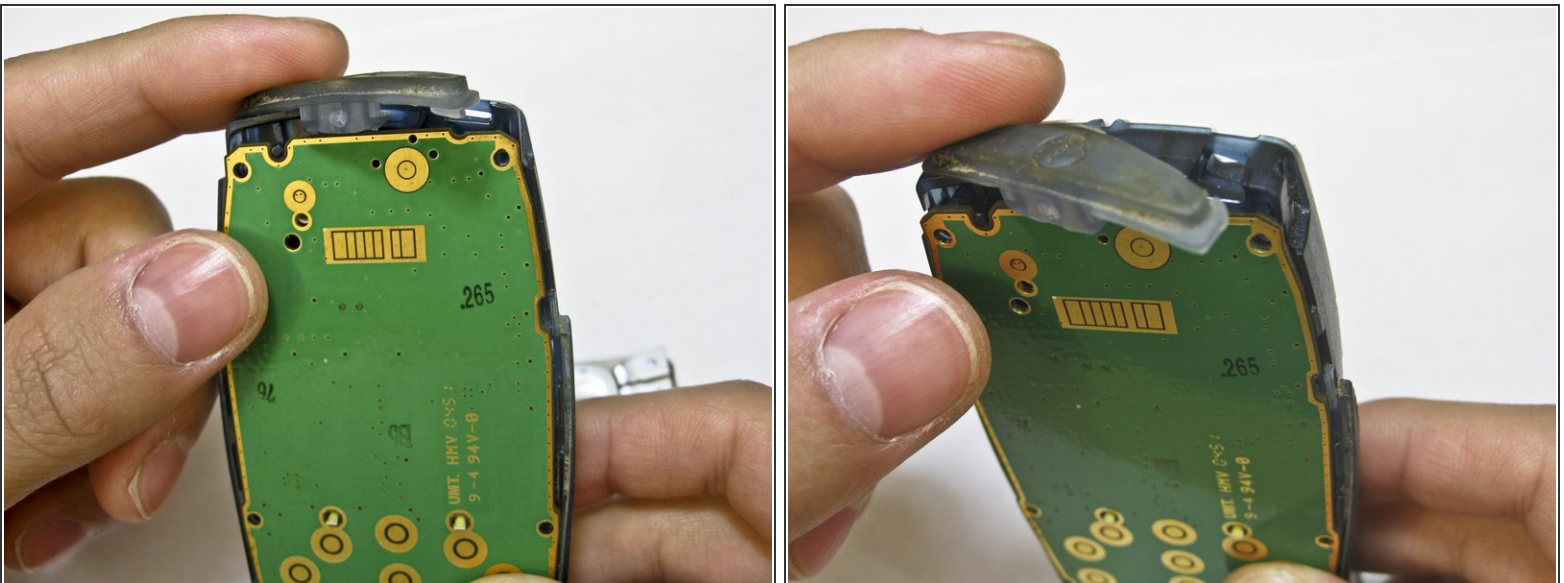
- Remove the six screws around the front of the phone body with a T6 screwdriver.

Step 7



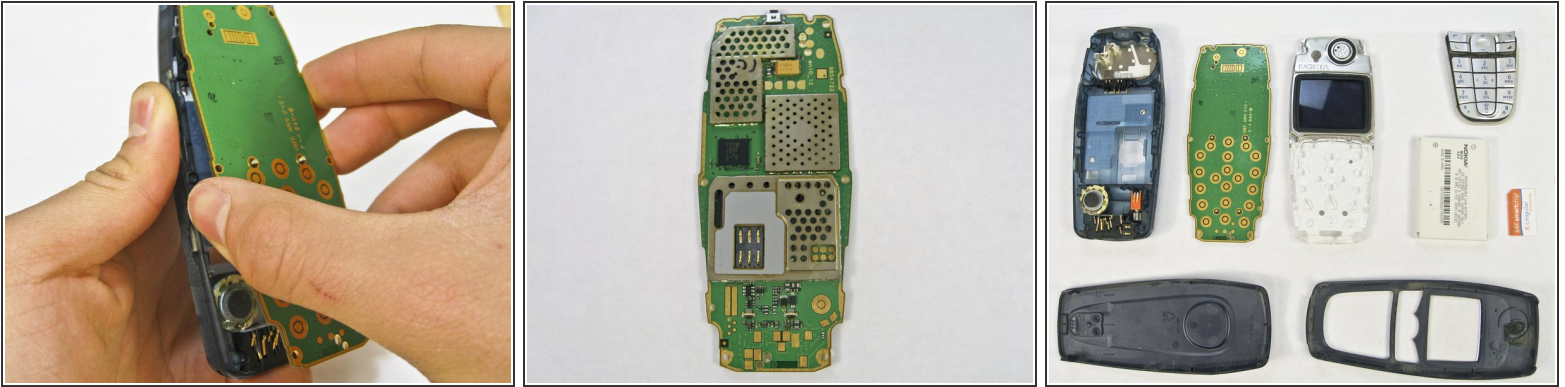
- Insert your finger underneath the speaker piece and pry away from the phone body.
 - ⚠ The plastic layer containing the LCD screen and speaker takes some force to remove.
- ⓘ There are 4 plastic tabs which keep it in place, but they are hard to press. Be careful and go tab by tab or use a spudger if you are nervous about using too much force.
- ⓘ The LCD and the speaker are attached to the same piece and must be replaced together.

Step 8 — Logic Board



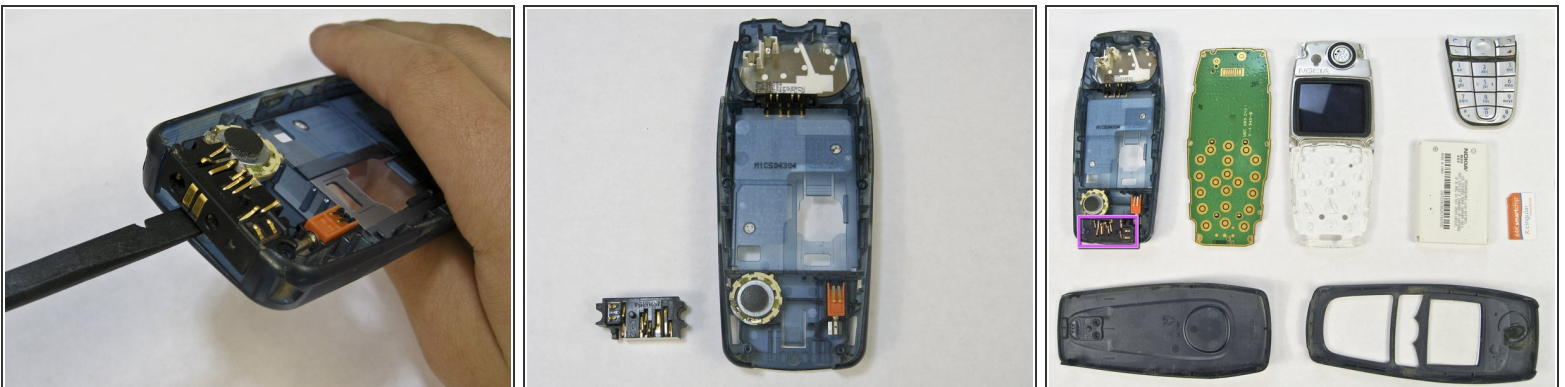
- Slide the rubber power button away from the body of the phone.
- ⓘ The power button is the rubber piece on the top of the phone.

Step 9



- Insert a finger between the phone body and logic board.
 - ❗ The logic board is the green plastic piece with circuitry attached.
- Pull the board away gently.
 - ⚠ The board is delicate and contains electronic parts. Be careful while removing it.

Step 10 — Charger Connector



- Insert a spudger tool between the phone casing and the charger connector.
- Pry the key away from the phone gently.
 - ⚠ Be careful not to bend the metal leads while handling the power key.

To reassemble your device, follow these instructions in reverse order.