



Nokia 6030 SIM Card Replacement

Written By: Spencer Woodworth



INTRODUCTION

Installing a new SIM card.

Step 1 — Battery



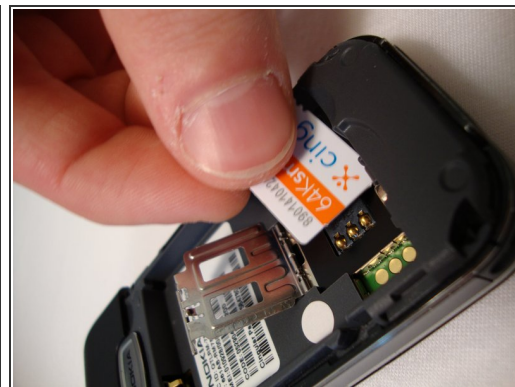
- Press the grip on the back of the phone and slide the rear housing down towards the bottom of the phone.

Step 2



- Use your fingernail and gently pull the the bottom of the battery up.
- Lift out battery and remove.

Step 3 — SIM Card



- Use your fingernail to lift the metal cage up.
- Remove SIM card.

Step 4



- Close the metal cage.

To reassemble your device, follow these instructions in reverse order.