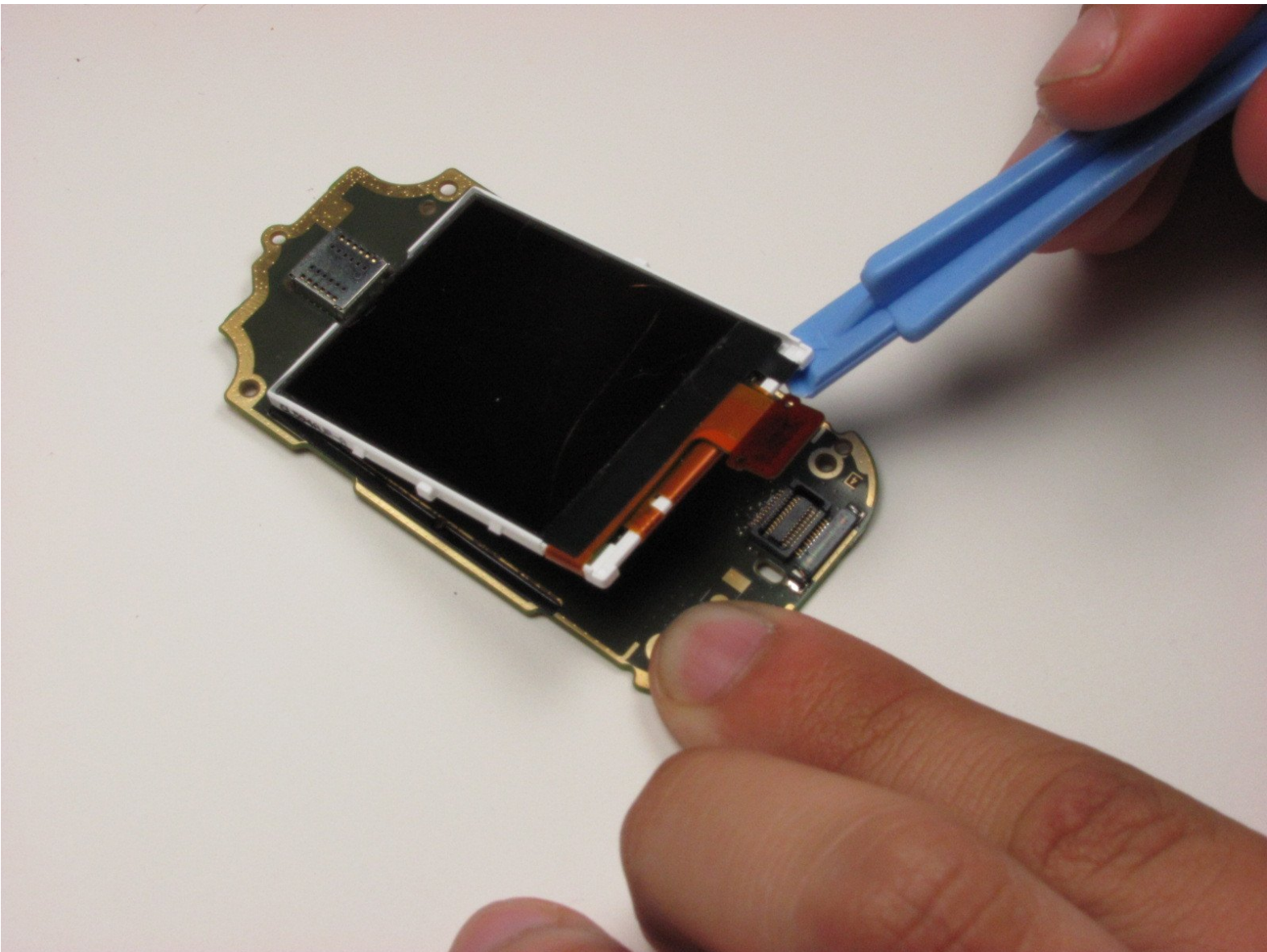




Nokia 6085h Inner LCD Replacement

Disassembly process for the inner LCD display.

Written By: Brett Balcer



INTRODUCTION

This guide give instructions on how to locate the inner LCD display for removal and/or repair.



TOOLS:

- [iFixit Opening Tools](#) (1)
 - [T6 Torx Screwdriver](#) (1)
-

Step 1 — Battery



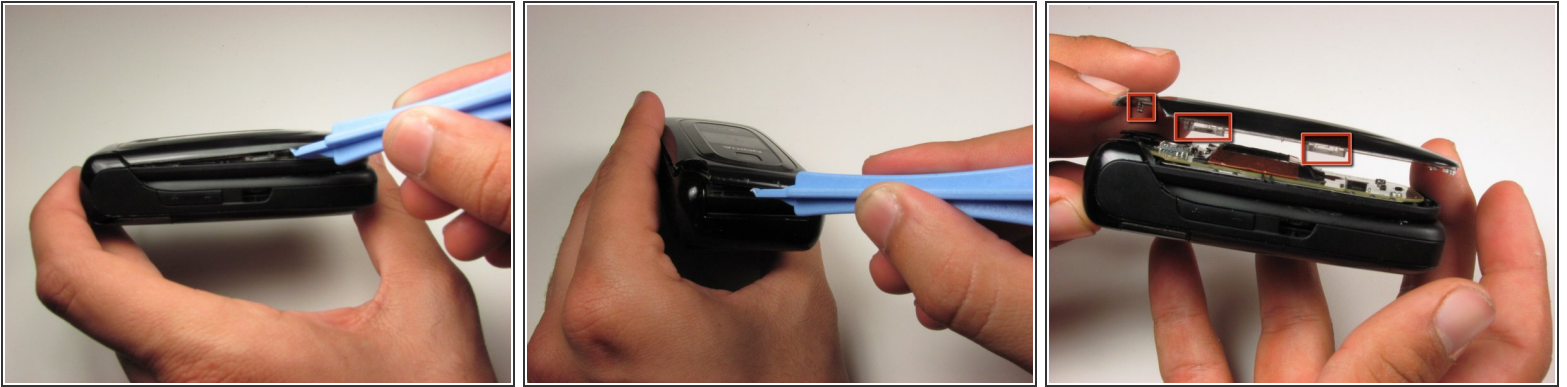
- Flip over the phone and then slide down the back cover with your thumb.

Step 2



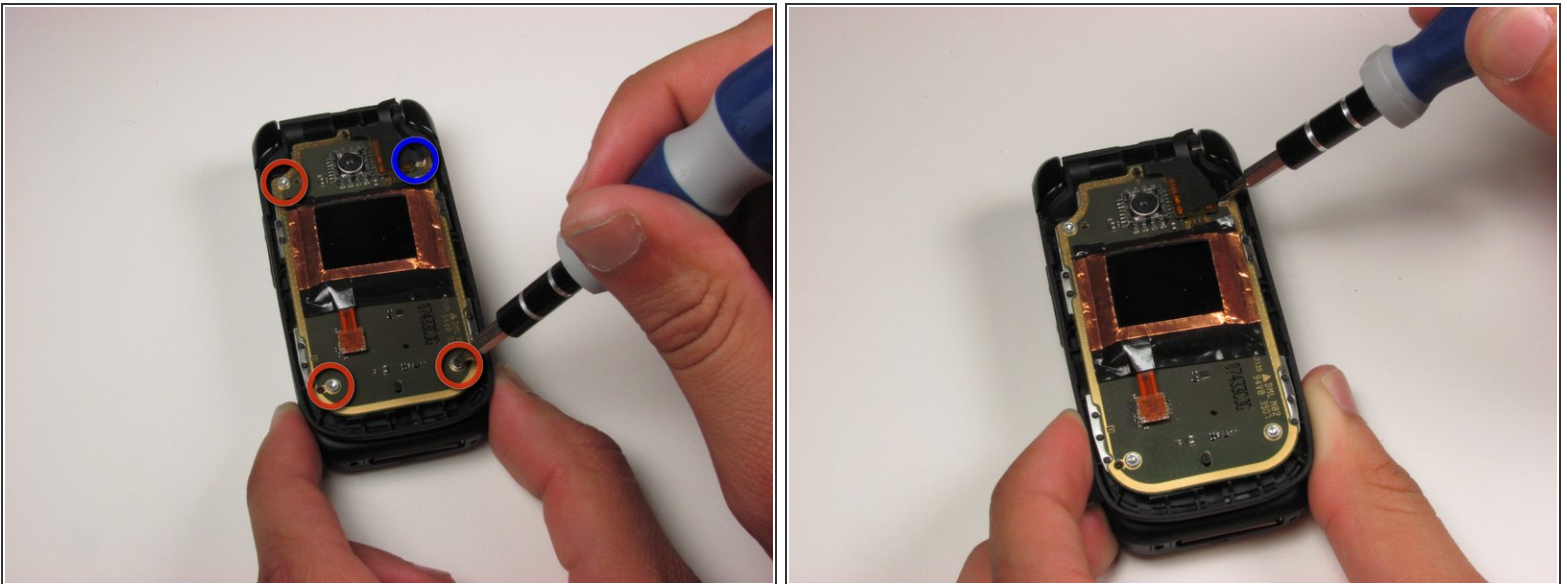
- Lever out the battery from the phone using your thumb.

Step 3 — Front LCD Display



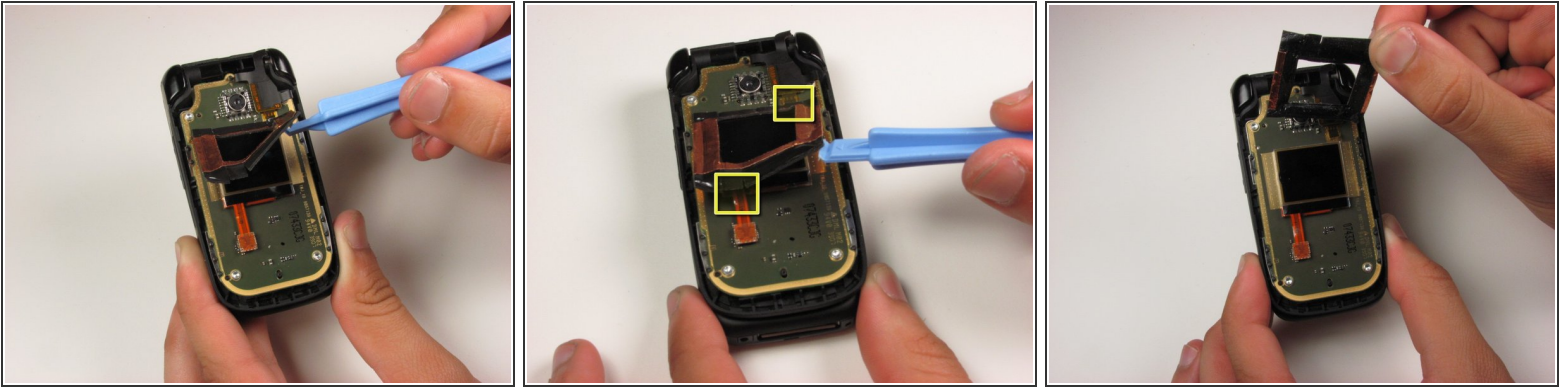
- With the phone closed, run a plastic opening tool along the seam of the top half of the phone
- Make sure to disconnect each of the five clips before proceeding (2 on each side, 1 on top)

Step 4



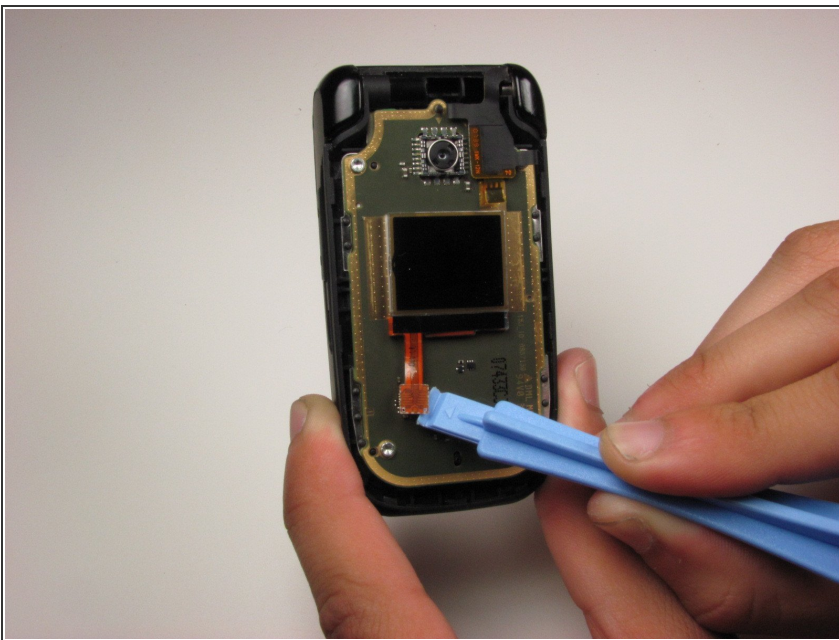
- Using T6 Torx Screwdriver, remove the four 3.16mm screws from the front panel
- Note that the fourth screw is under a fold in the ribbon cable

Step 5



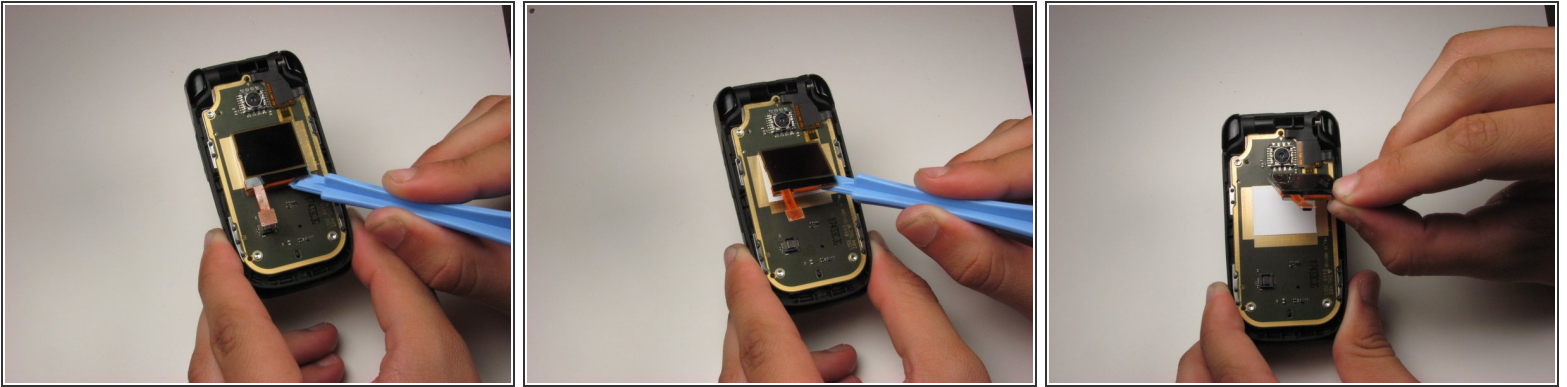
- Starting in the lower right corner, slowly start to lift the tape that is holding the front LCD and cables down
- Be careful around the two ribbon cables that are attached to the tape, they are fragile
- Lift the tape from the board

Step 6



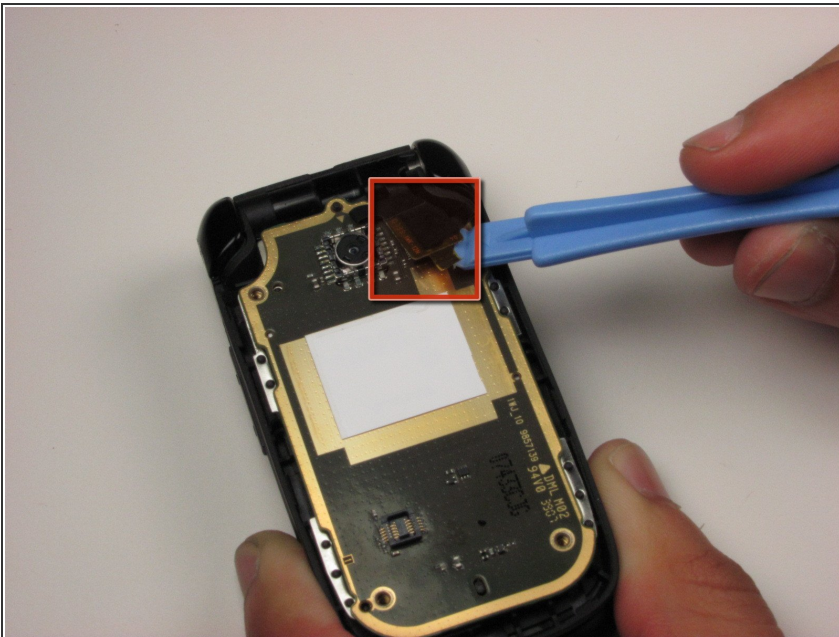
- Using a plastic opening tool, lift the ribbon cable connection below the front LCD

Step 7



- Using a plastic opening tool, slowly pry up the LCD display from the bottom, releasing it from the glue holding it to the board

Step 8 — Inner LCD Display



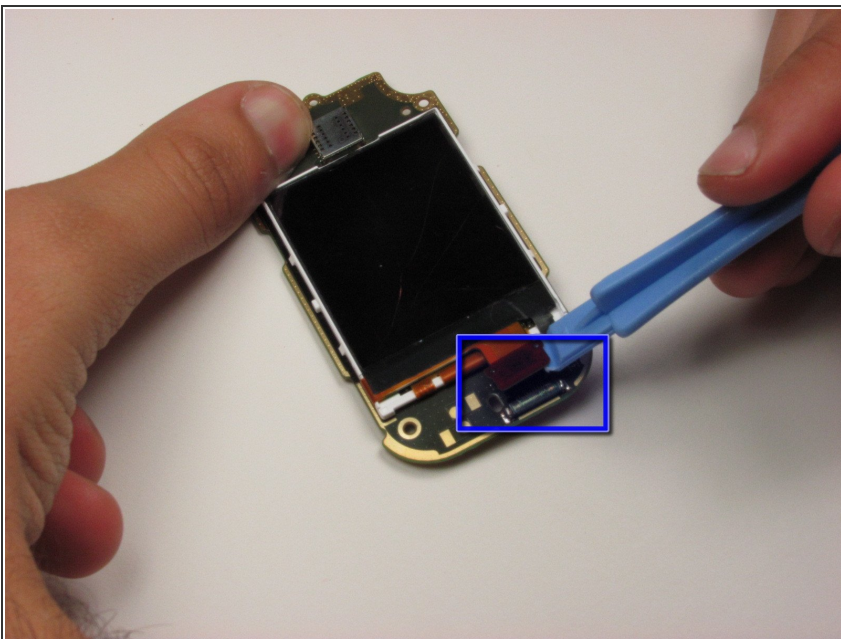
- Locate the ribbon cable connection in the upper right hand corner of the board
 - Using a plastic opening tool, lift off the cable from the board
- ⚠ Be gentle and make sure not to rip the ribbon cable

Step 9



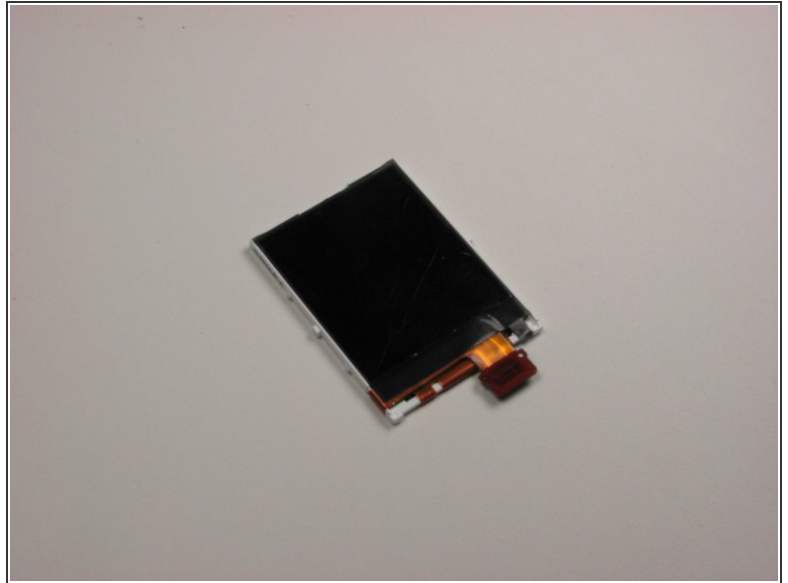
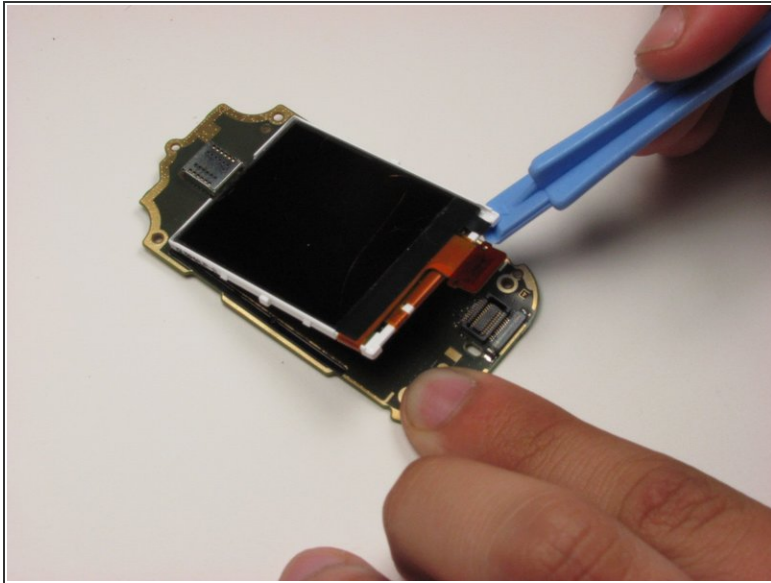
- Using a plastic opening tool, slowly work the board off the mounts holding it to the frame
- Flip the board over to reveal the main display

Step 10



- Locate the ribbon cable for the main display on the bottom of the board
- Slowly lift off the ribbon connector from its housing using a plastic opening tool

Step 11



- Slowly wedge the plastic opening tool under the bottom of the main display
- Separate the display from the glue lifting it off the board

To reassemble your device, follow these instructions in reverse order.