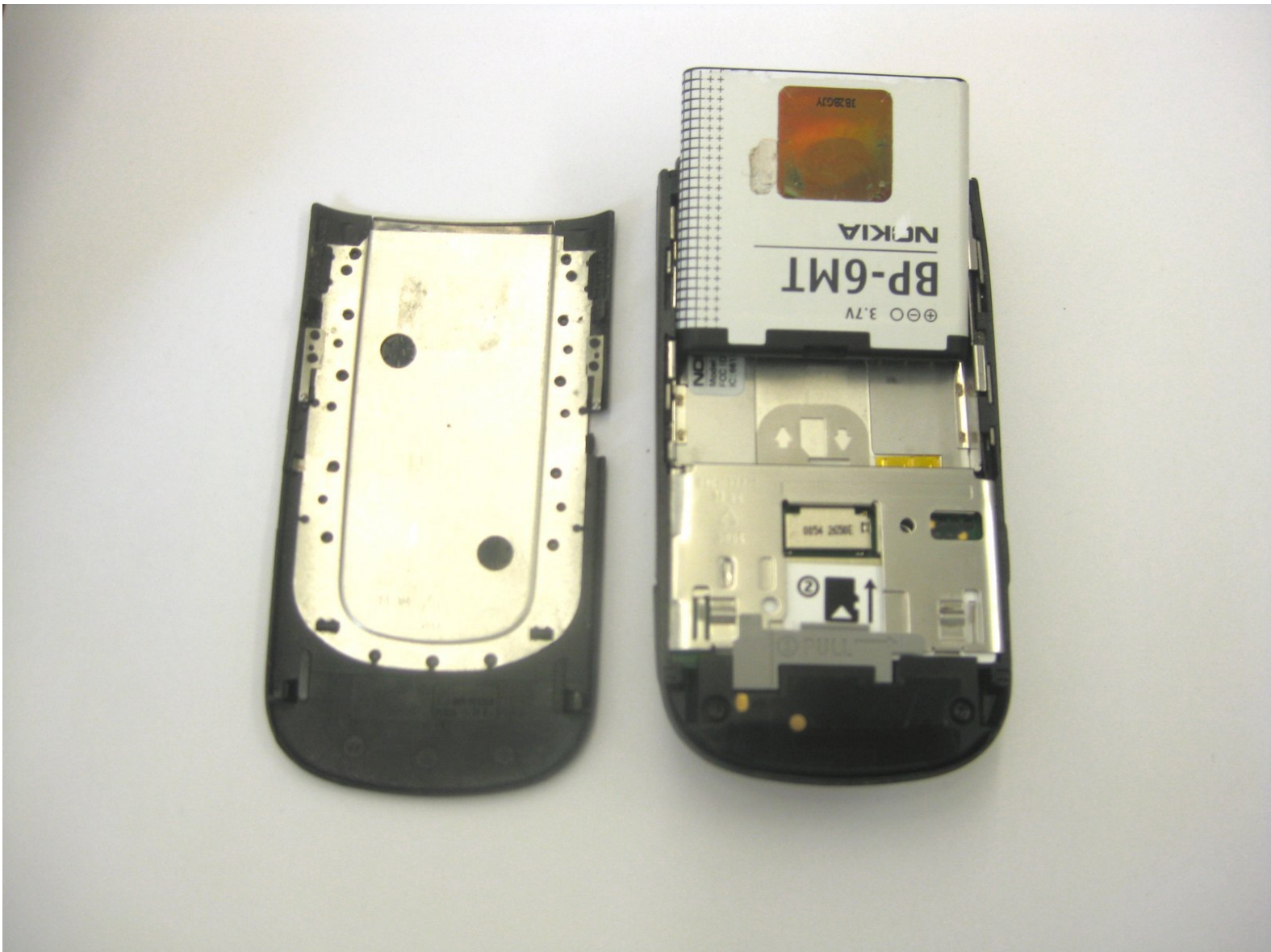




Nokia 6350-1b Battery Replacement

This guide will show you how to install the battery for your Nokia 6350-1b.

Written By: Anna



Step 1 — Battery



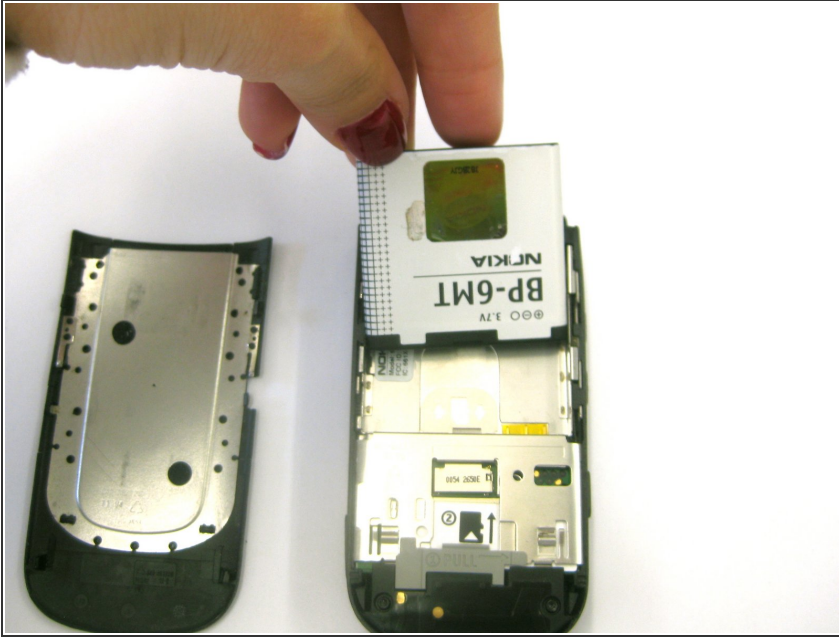
- Remove the back of the phone.
- In order to do this, you must slide the back panel downwards.

Step 2



- When you slide the panel downwards, it will immediately come loose.
- Remove the back panel.

Step 3



- Once the back of the phone is removed, you can begin to install the battery.
- Line up the gold indentations in the upper left corner of the battery with the three gold indentations in the upper left hand corner of the empty battery space.

Step 4



- Once you have lined up the battery, you can slide it in.
- Insert the battery by sliding it up and in.

Step 5



- After the battery has clicked in, you need to reinstall the back panel of the phone.
- Line the back panel up with the phone.

Step 6



- Now that the back panel is lined up, press it onto the phone and slide it upwards. The panel should click back into place.

To reassemble your device, follow these instructions in reverse order.