



Nokia Asha 200 Teardown

Teardown the insanely powerful and sexy Nokia 200

Written By: Joel



INTRODUCTION

What you will need:

T6 Screwdriver

Your favorite spudger (I chose the iSesamo)

This phone is easy and almost impossible to brake. So put any fear you have away and lets crack it open.



TOOLS:

- [T6 Torx Screwdriver](#) (1)
 - [iSesamo Opening Tool](#) (1)
-

Step 1 — Nokia Asha 200 Teardown



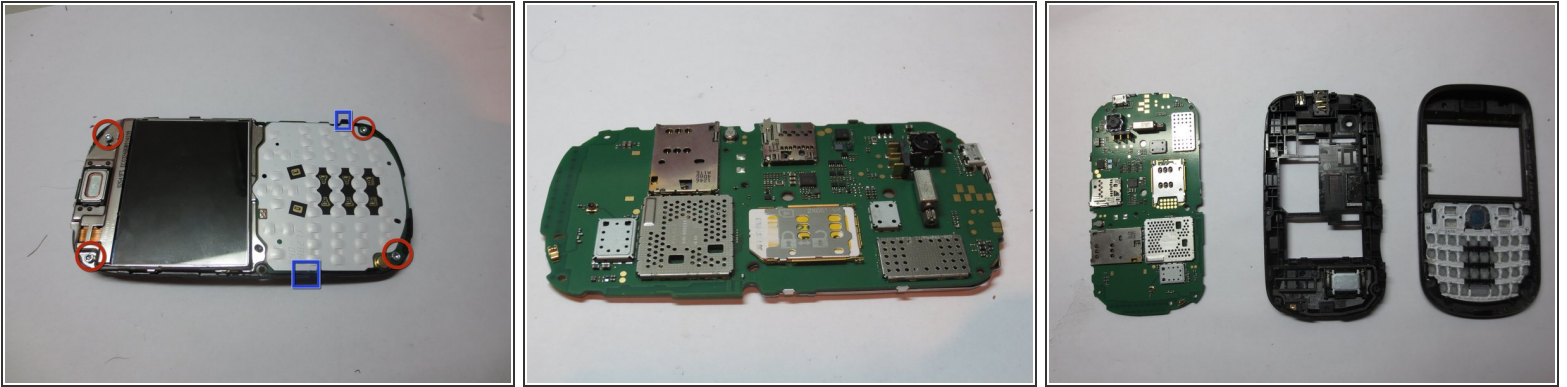
- Take the back cover off and remove the battery. (Not shown)
- Remove the two screws located with red circles

Step 2



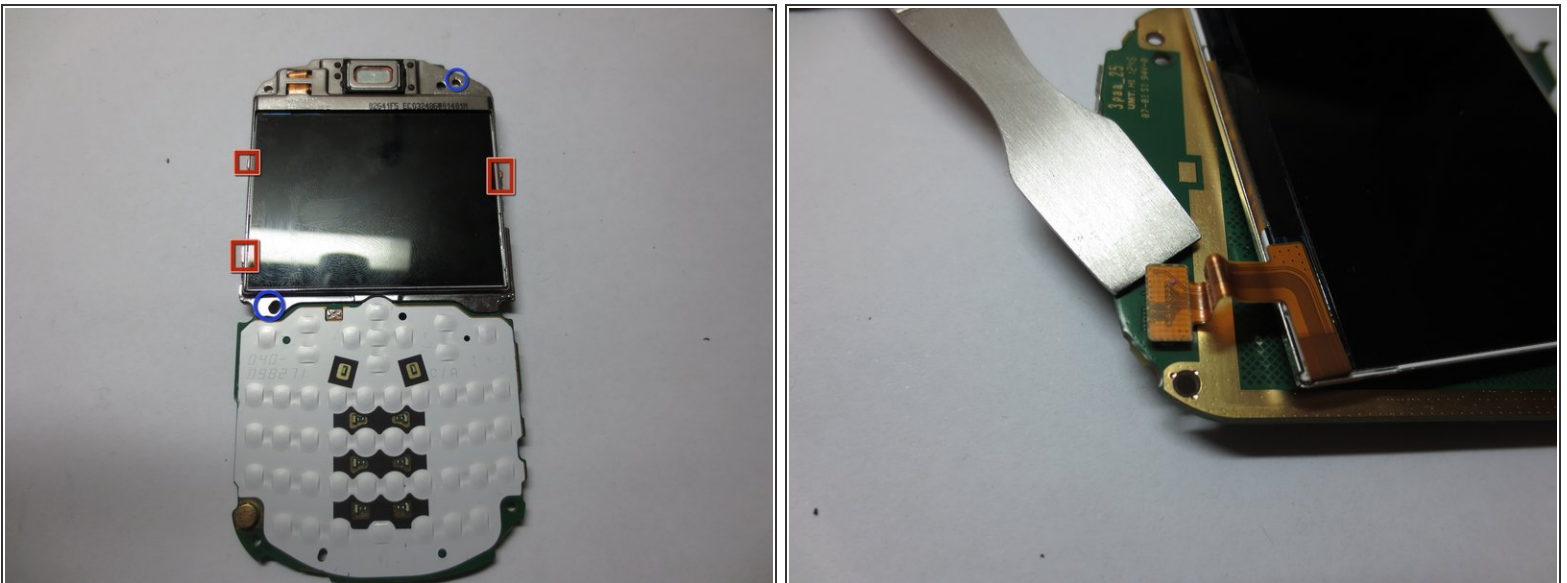
- Insert spudger between the front/back case and lever until you hear a click.
 - Slowly work your way around until the bottom end is separated. Then with the bottom end facing your body, try to pull the back case towards yourself.
- i** Make sure not to loose Sim2 and Micro SD covers as they easily fall out. Also when re-assembling make sure they are pulled out otherwise you will have trouble putting things back together

Step 3



- Remove the 4 screws marked with red circles
- There are two clips now holding the circuit board in place. Maneuver the circuit board over one and then pull towards the released clip to release the opposite one.

Step 4



- The lcd screen is held in by a steel bracket. This bracket is held in place by the clips marked with red squares. The easiest way to release it is by levering the one on the right (as pictured) and the bracket should come off.
- When re-assembling make sure the studs marked with blue circles line up properly.
- Using a spudger disconnect the LCD cable.

Step 5



- Congratulations you have successfully dis-assembled the phone. I hope you had as much fun tearing it apart as I did helping you along the way.

To reassemble your device, follow these instructions in reverse order.