



# Nokia Lumia 1020 Battery Replacement

This guide will walk you through taking out your Nokia Lumia 1020 phone battery and replacing it with a new one.

Written By: Sydney Hostalley



---

## INTRODUCTION

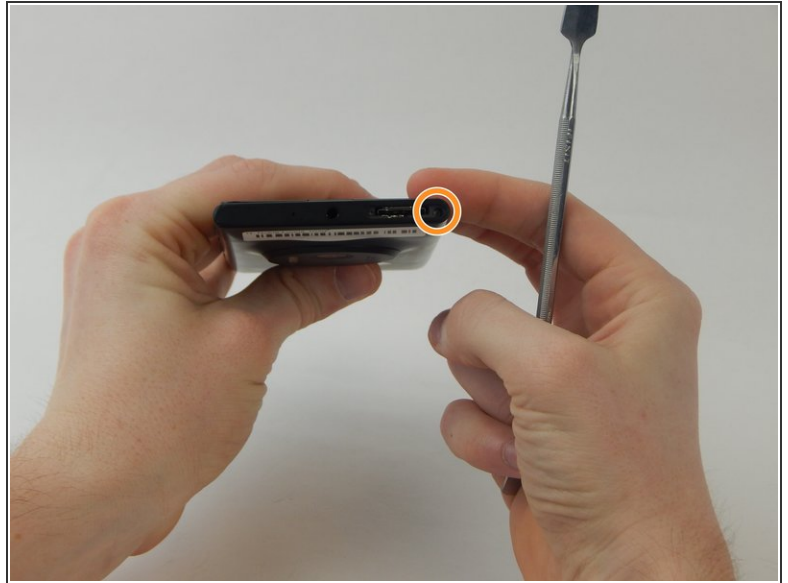
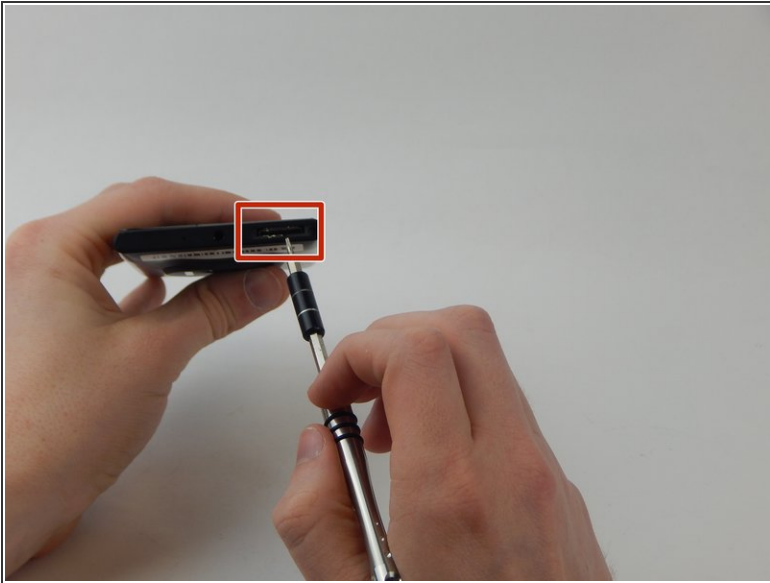
The Nokia Lumia 1020 phone battery is internally located. The battery is removable and replaceable, but accessing it requires the user to open the device by removing the screen.

---

### TOOLS:

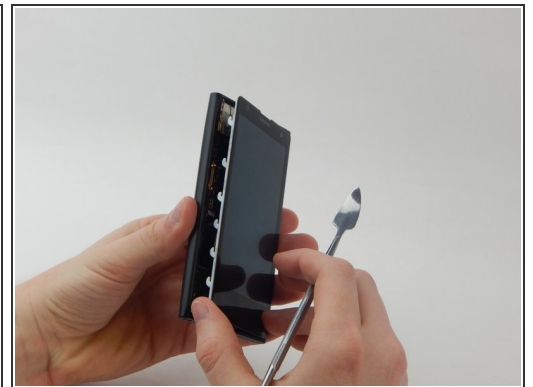
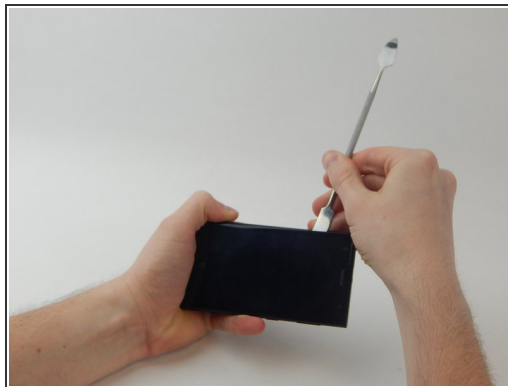
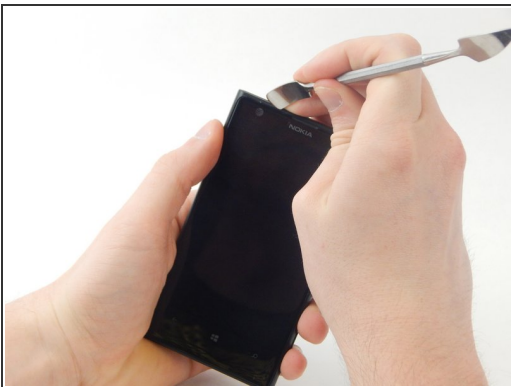
- [T4 Torx Screwdriver](#) (1)
  - [T6 Torx Screwdriver](#) (1)
  - [ESD Safe Tweezers Blunt Nose](#) (1)
  - [Spudger](#) (1)
-

## Step 1 — Screen



- Use a SIM door key to remove the SIM card and SIM card tray from the device.
- Use a T4 screwdriver to loosen the captured torx screw to the right of the SIM card tray (the screw will not come out).

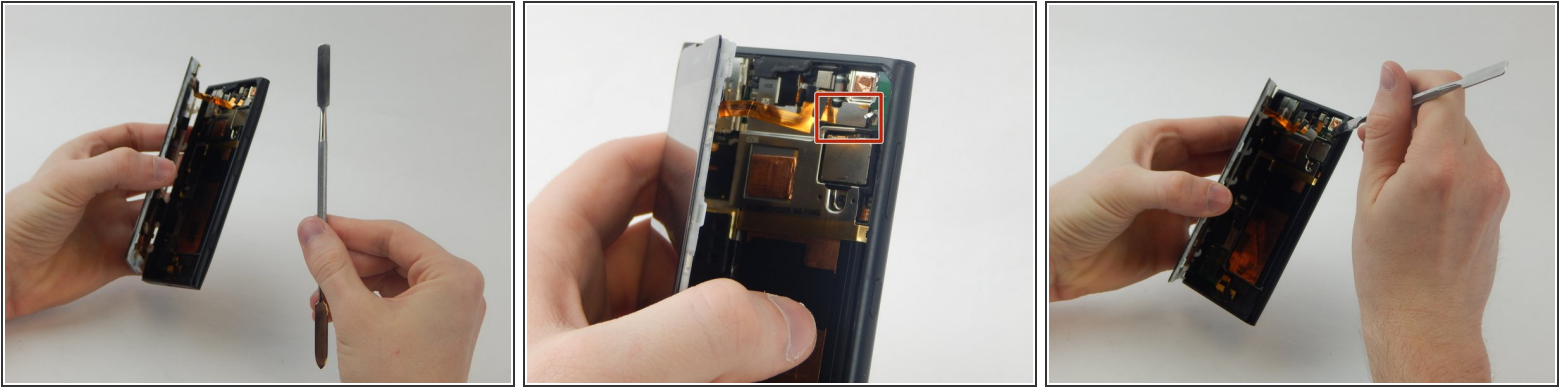
## Step 2



- Wedge a spudger in between the screen and the back of the device, starting from the top left corner of the phone.
- Gently pry the screen away from the back of the device using slight upward pressure.
- Slide the spudger down towards the bottom left corner of the device, continuing to gently pry upwards. The screen will now be slightly separated from the back of the phone.

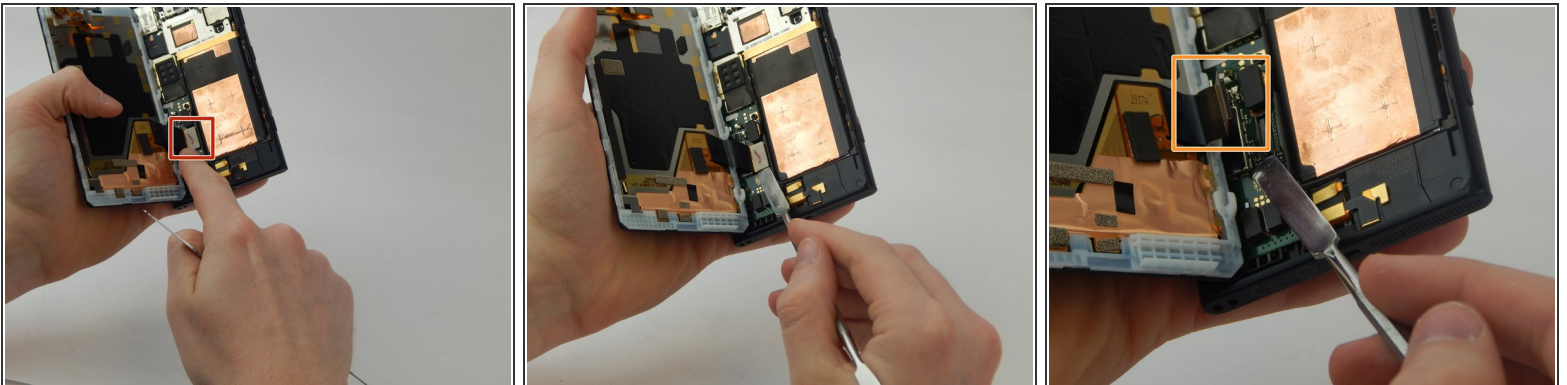


### Step 3



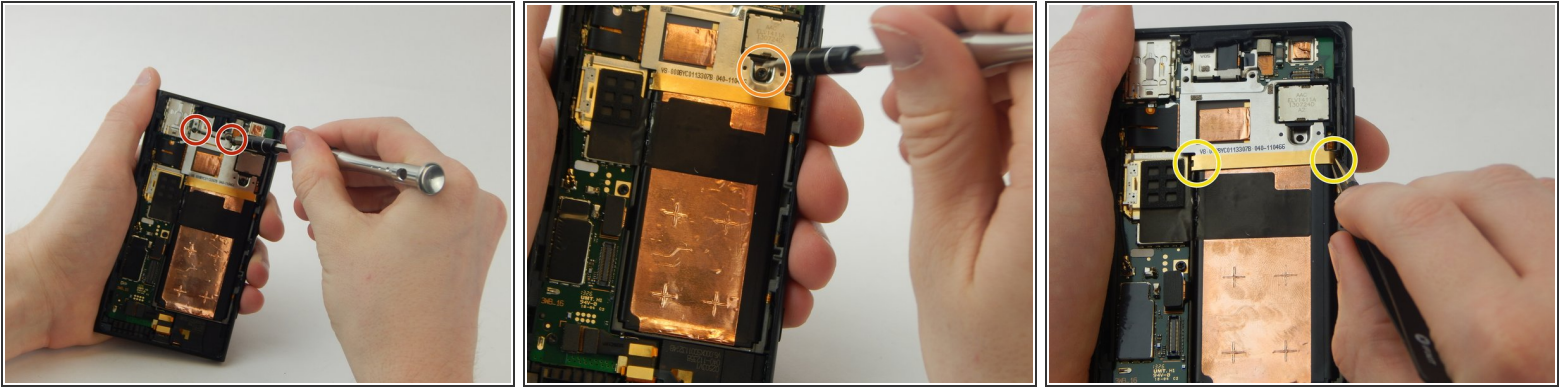
- Wedge a spudger underneath the silver rectangle in the upper right corner until it pops off the back of the phone.

### Step 4



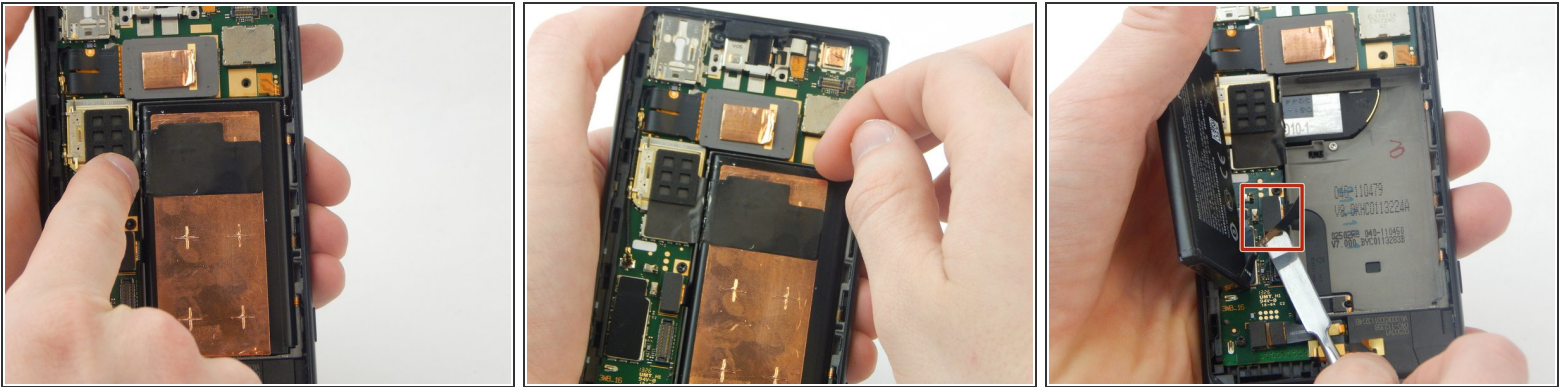
- Wedge a spudger underneath the silver rectangle in the lower left corner until it pops off the back of the phone.
- Completely remove the screen from the back of the phone.

## Step 5 — Battery



- Unscrew the two 4 mm torx screws on the top silver strip with a T4 screwdriver.
- Unscrew the 4.5 mm torx screw above the gold bar with a T6 screwdriver.
- Grab the edges of the gold strip with gripped tweezers to remove. The gold and silver metal will come off together.

## Step 6



- ⚠ Be careful not to puncture the battery. Use a spudger to slice the black tape on the left side of the battery.
- Remove the battery with your finger.
- Wedge a spudger underneath the small black rectangle attached to the battery until it pops off.

To reassemble your device, follow these instructions in reverse order.

