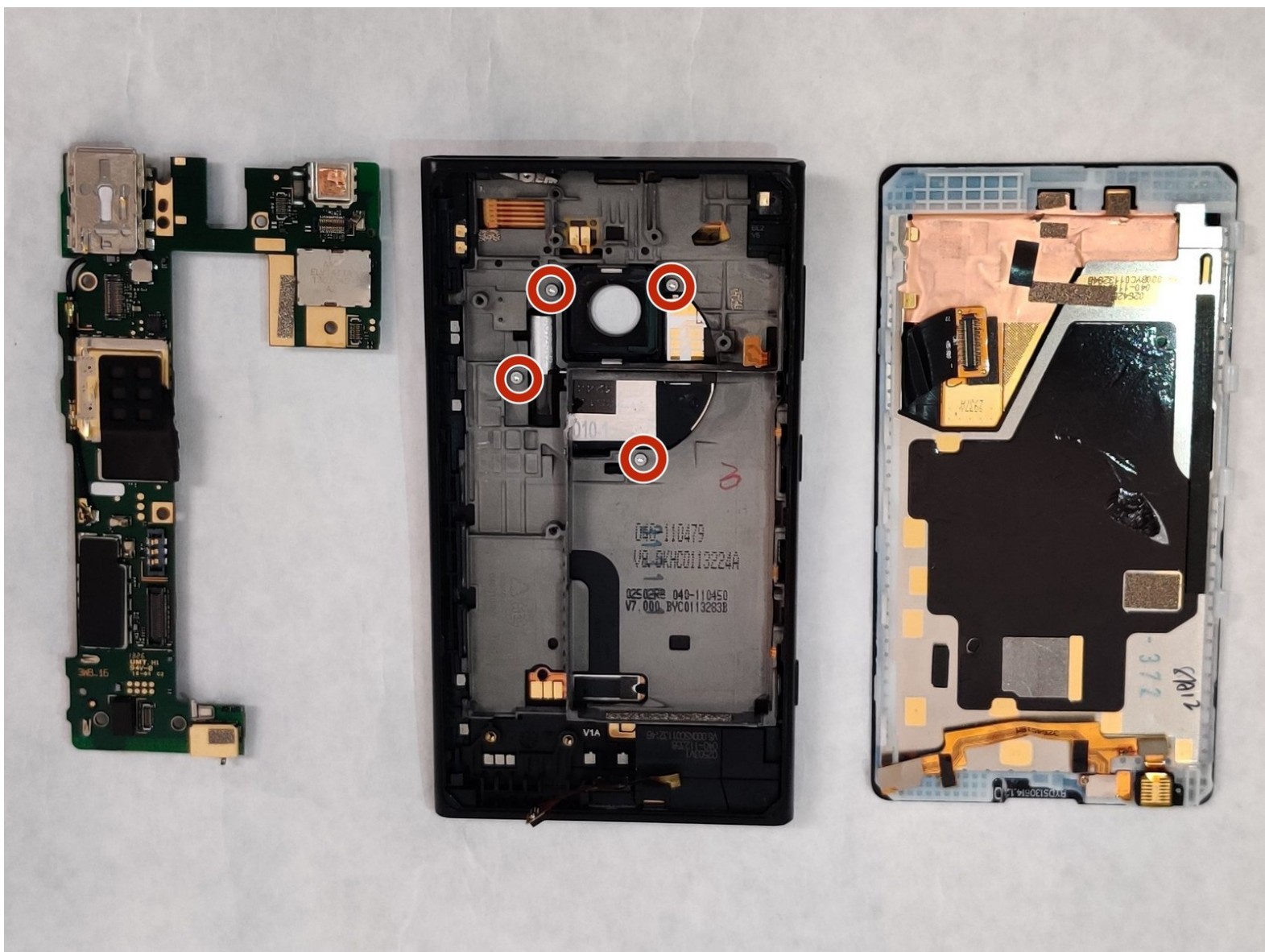




Nokia Lumia 1020 Charging Port Replacement

Use this guide to replace the charging port component of your Nokia Lumia 1020.

Written By: Abbi Waterfill



INTRODUCTION

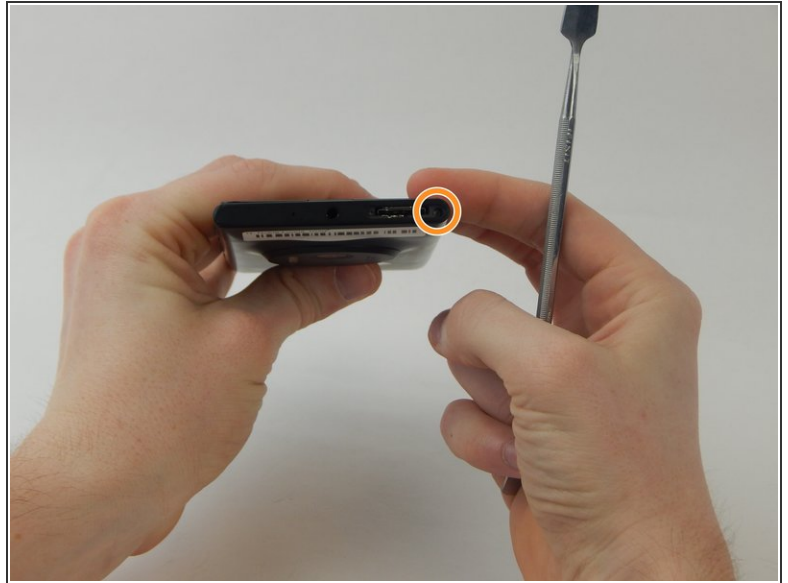
This guide will describe how to remove the charging port of your Nokia Lumia 1020.

This replacement will be useful if you want to replace a damaged charging port. Most commonly, charging ports can be damaged from accumulating debris or water damage. If you are having issues charging your device, you may want to consider replacing the charging port.

TOOLS:

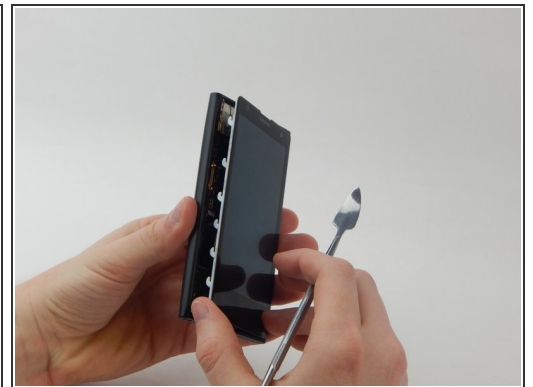
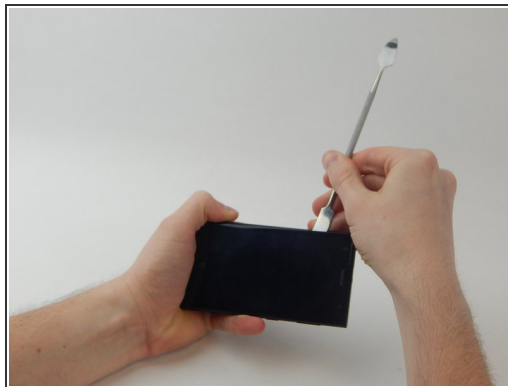
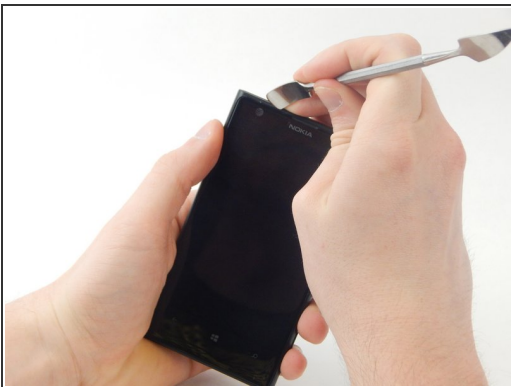
- [T4 Torx Screwdriver](#) (1)
 - [T6 Torx Screwdriver](#) (1)
 - [ESD Safe Tweezers Blunt Nose](#) (1)
 - [Spudger](#) (1)
 - [Hair Dryer](#) (1)
-

Step 1 — Screen



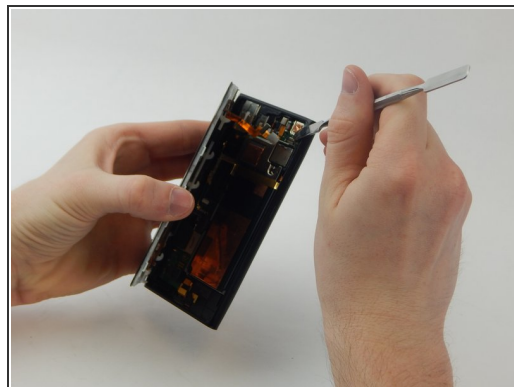
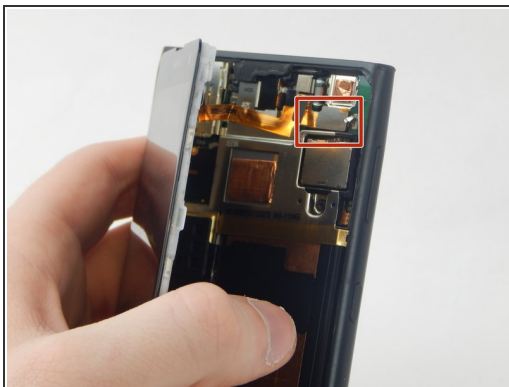
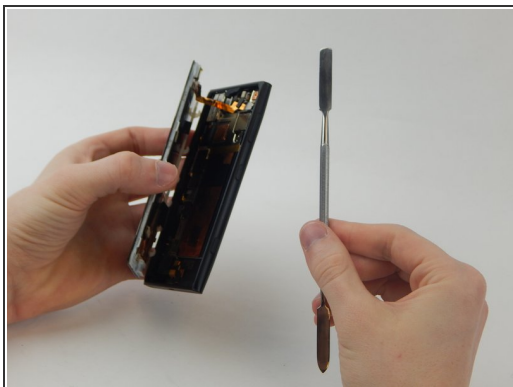
- Use a SIM door key to remove the SIM card and SIM card tray from the device.
- Use a T4 screwdriver to loosen the captured torx screw to the right of the SIM card tray (the screw will not come out).

Step 2



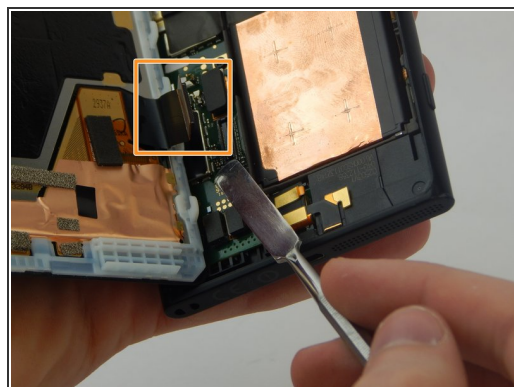
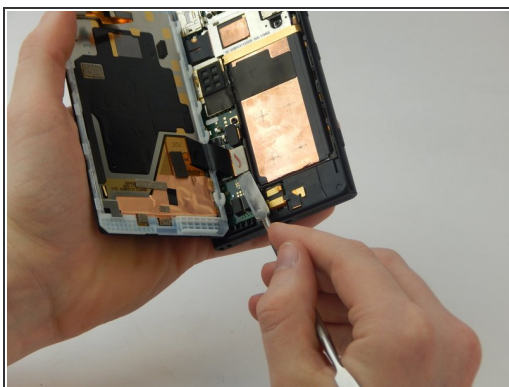
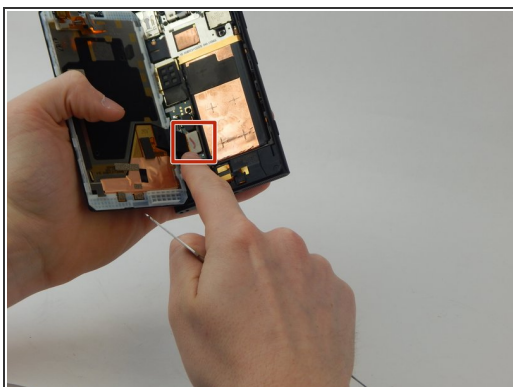
- Wedge a spudger in between the screen and the back of the device, starting from the top left corner of the phone.
- Gently pry the screen away from the back of the device using slight upward pressure.
- Slide the spudger down towards the bottom left corner of the device, continuing to gently pry upwards. The screen will now be slightly separated from the back of the phone.

Step 3



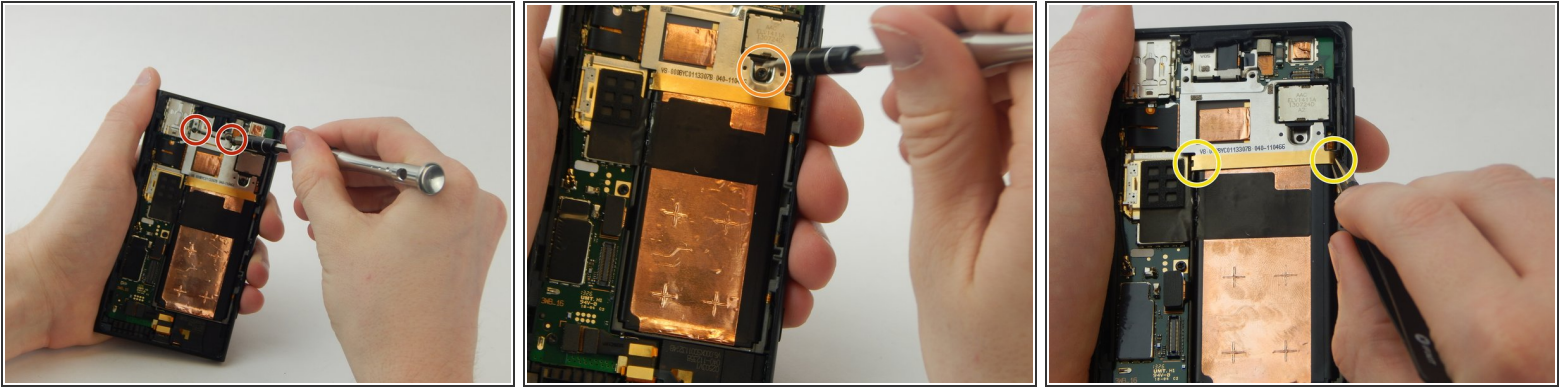
- Wedge a spudger underneath the silver rectangle in the upper right corner until it pops off the back of the phone.

Step 4



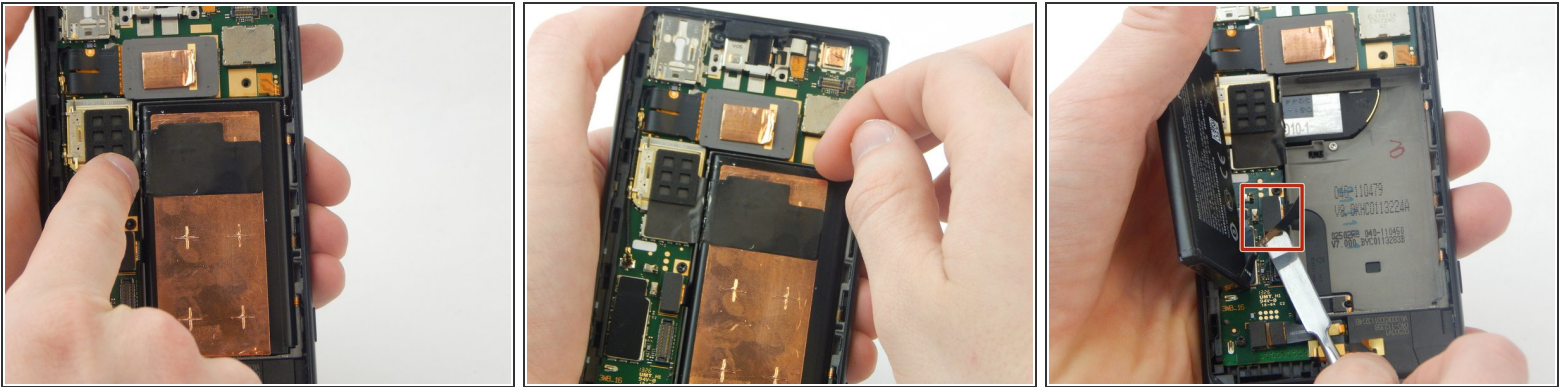
- Wedge a spudger underneath the silver rectangle in the lower left corner until it pops off the back of the phone.
- Completely remove the screen from the back of the phone.

Step 5 — Battery



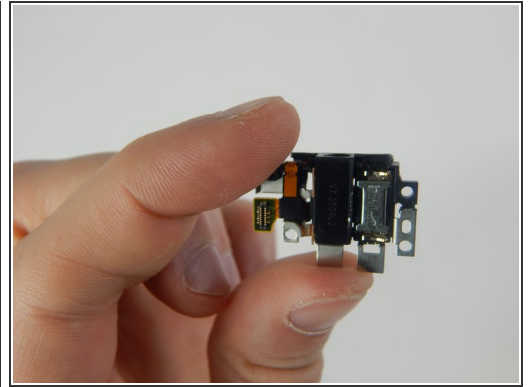
- Unscrew the two 4 mm torx screws on the top silver strip with a T4 screwdriver.
- Unscrew the 4.5 mm torx screw above the gold bar with a T6 screwdriver.
- Grab the edges of the gold strip with gripped tweezers to remove. The gold and silver metal will come off together.

Step 6



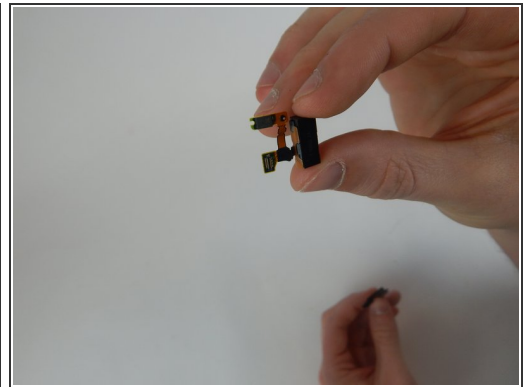
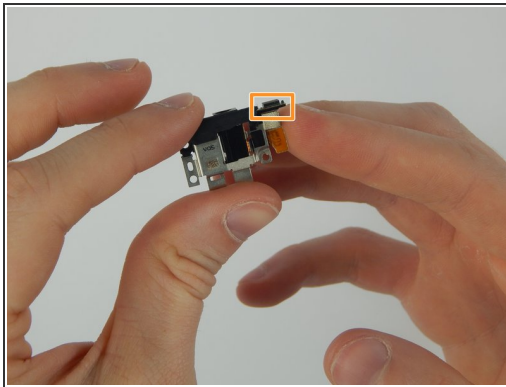
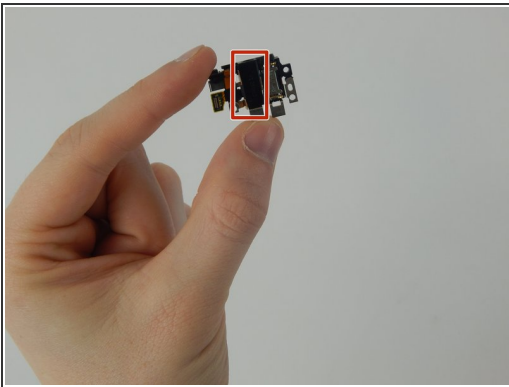
- ⚠ Be careful not to puncture the battery. Use a spudger to slice the black tape on the left side of the battery.
- Remove the battery with your finger.
- Wedge a spudger underneath the small black rectangle attached to the battery until it pops off.

Step 7 — Headphone Jack



- Use the T4 screwdriver to remove the 4 mm torx screw.
- Remove the headphone jack by pulling back on the silver plate with your fingernail.

Step 8



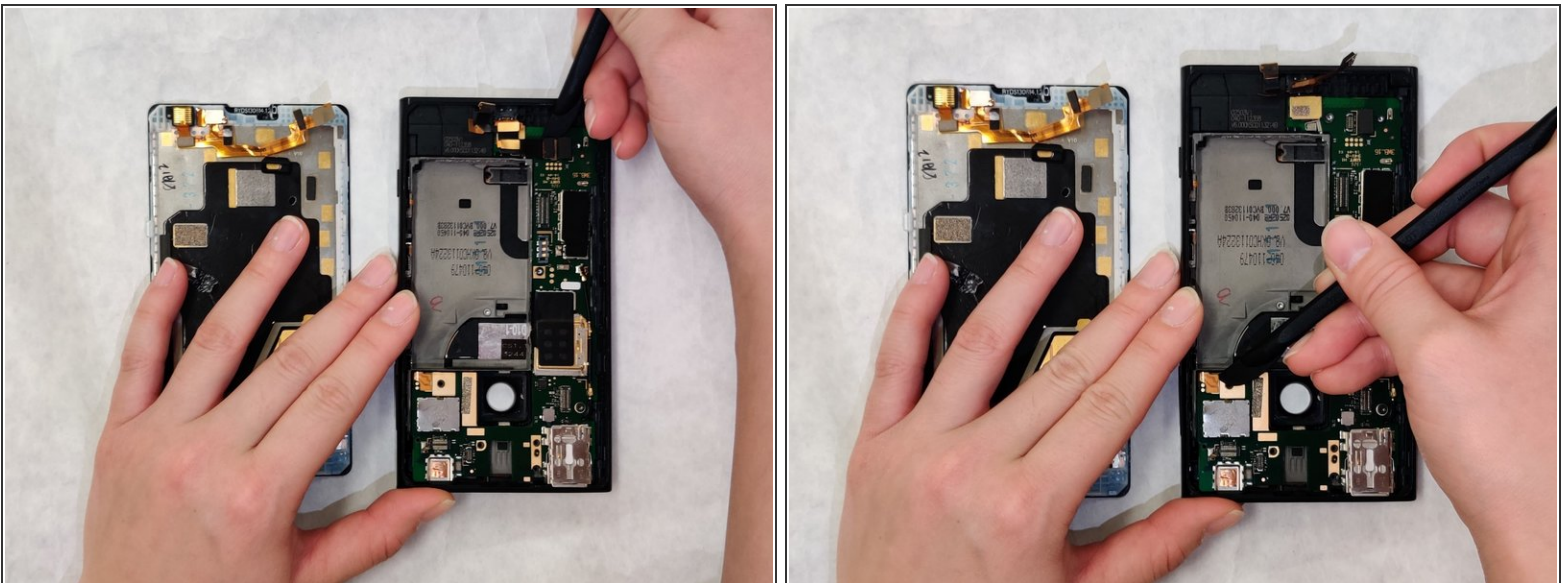
- Remove the headphone jack with spudger.
- Wedge the spudger underneath the grey rectangle and pry until it pops off. Note this piece is glued and may require more force than previous rectangles.
- Headphone jack is fully removed and can be replaced.

Step 9 — Rear-Facing Camera



- Use your fingernail to grip the rear-facing camera on the upper middle part of the back of the phone. Pry until it pops off to the left.
- Remove the camera by wedging a spudger underneath the attached gold foil.

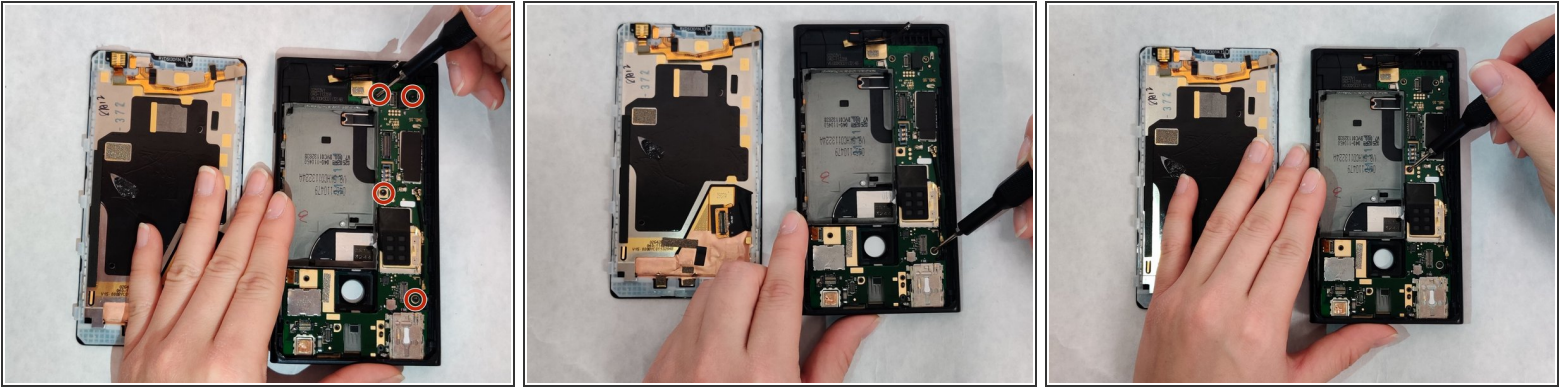
Step 10 — Motherboard



- Disconnect the two gold connectors from the motherboard using a spudger.

⚠ Be gentle with the connectors to make sure they are not damaged.

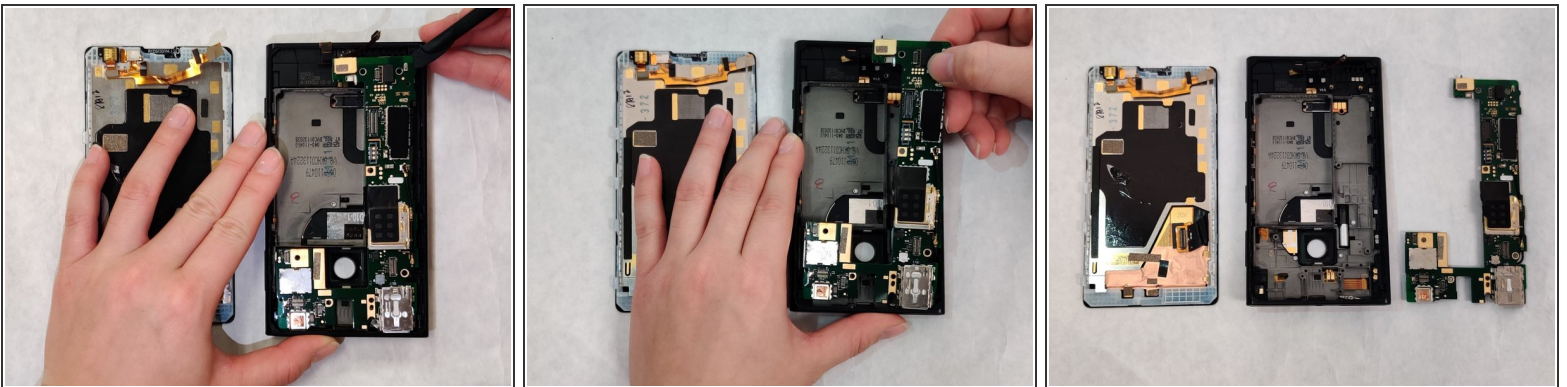
Step 11



- Using a T4 screwdriver, remove four 4.60 mm screws to disconnect the motherboard from the rest of the device.

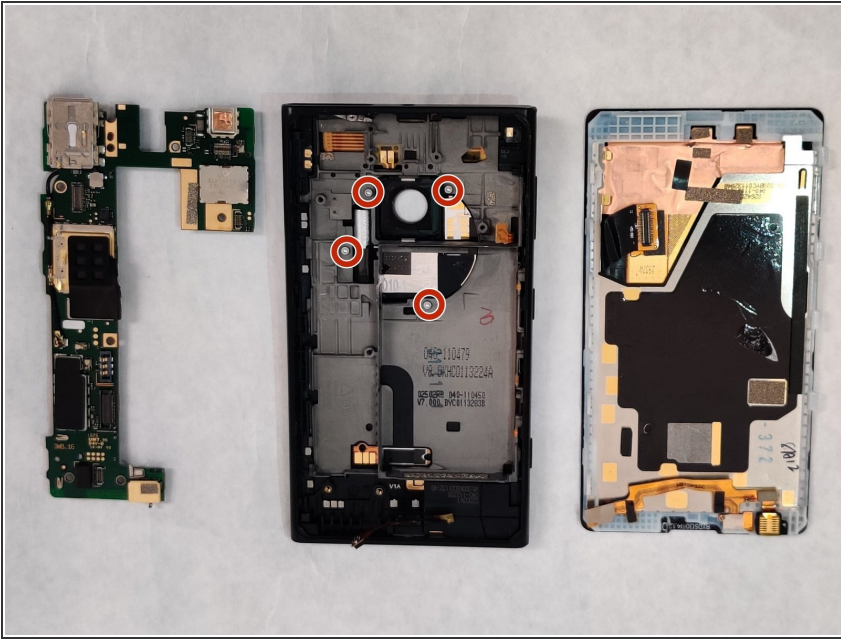
⚠ Be sure not to lose the screws.

Step 12



- Use the spudger to remove motherboard first from the top right corner, then bottom right corner, then the bottom left corner.
- After loosening the motherboard, begin to remove the component by starting at the top right corner first, then pull motherboard out.

Step 13 — Charging Port



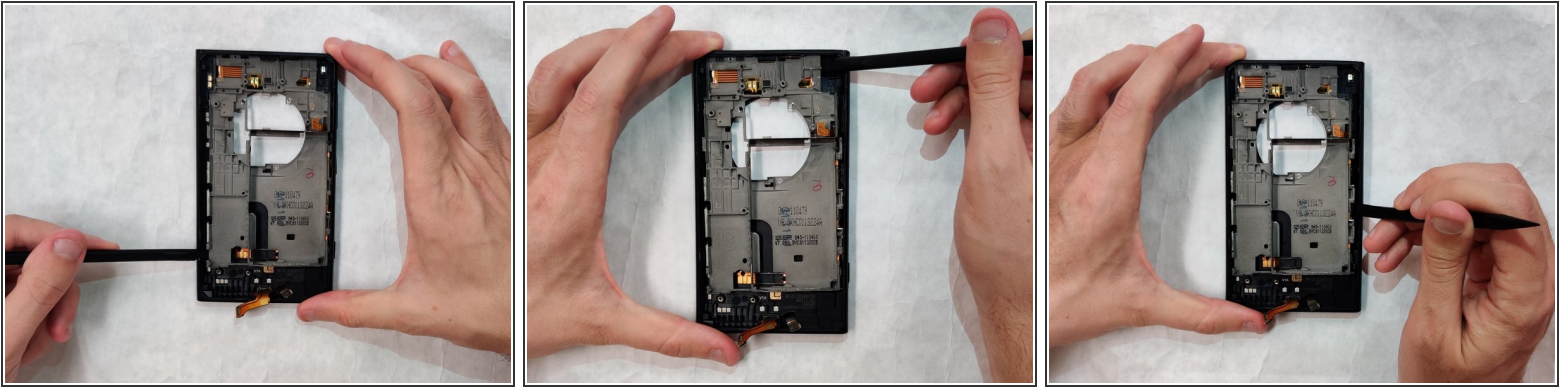
- Using a T4 screwdriver, unscrew four 4.60 mm screws to disconnect the rear camera casing from the rest of the device.

Step 14



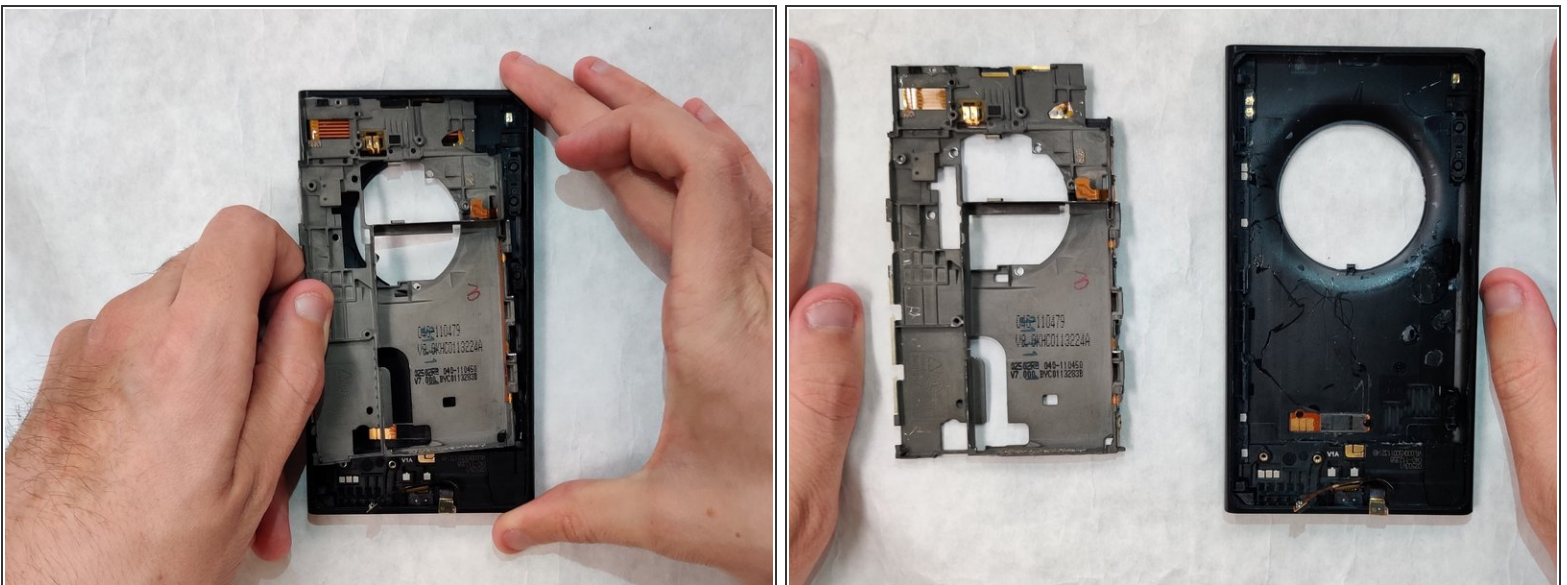
- Use a hairdryer to heat up the adhesive of the plastic base. This may take around 5 minutes.
- ⓘ This may take more than 5 minutes. Also, the iOpener by itself may not provide enough heat to truly melt the adhesive.

Step 15



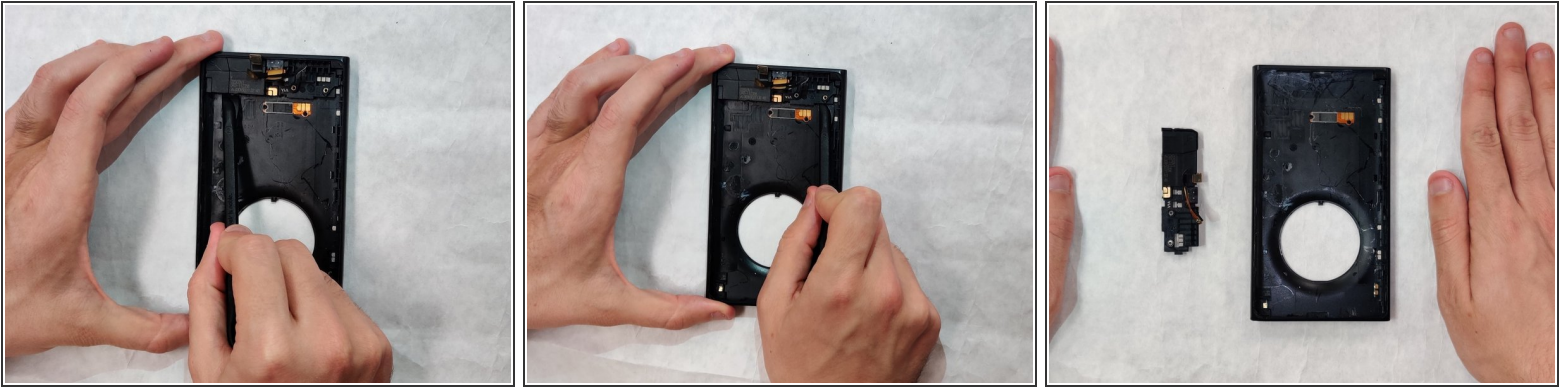
- Insert the spudger on the edges of the base and lift up.

Step 16



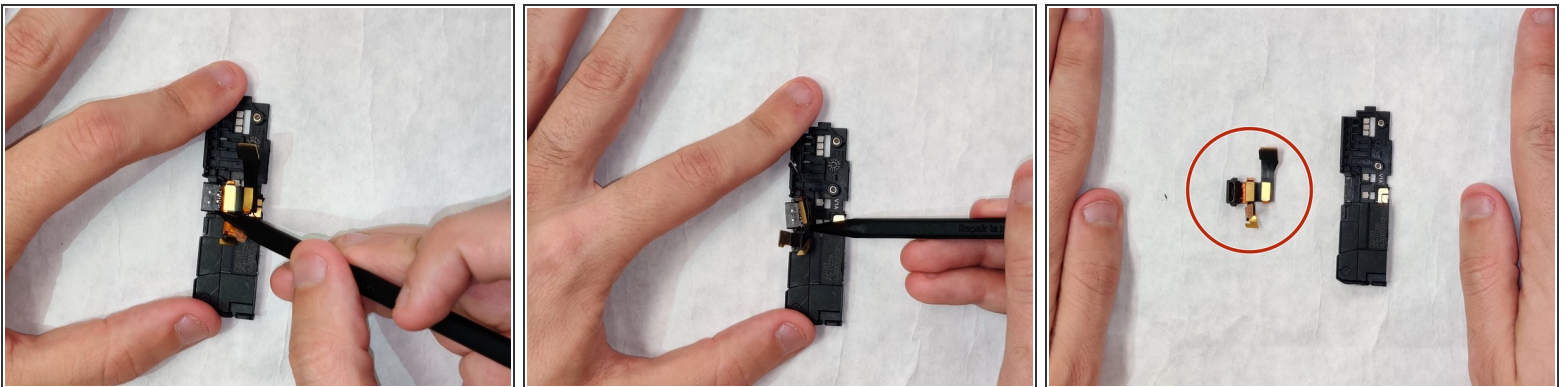
- Now that the base is loose, lift it with your fingers and separate it from the case.

Step 17



- After removing the base, slide the spudger in underneath the speaker, and slide the spudger across.
- The speaker and charging port assembly should then come out easily.

Step 18



- Lastly, wedge the spudger on one side of the charging port and push out. Once it is loose, the charging port comes right out!
- ⓘ There are clips that you need to get past, so don't be afraid to push a little harder than normal.
- The smaller piece from the disassembly is the charging port while the larger piece is the speaker.

To reassemble your device, follow these instructions in reverse order.