



Nokia Lumia 1020 Front-Facing Camera Replacement

This guide will walk through how to replace the Nokia Lumia 1020 camera.

Written By: Sydney Hostalley



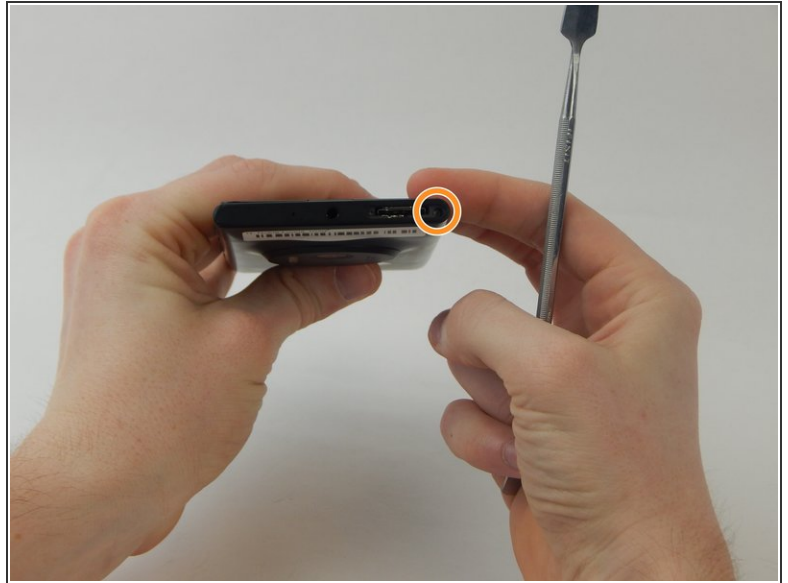
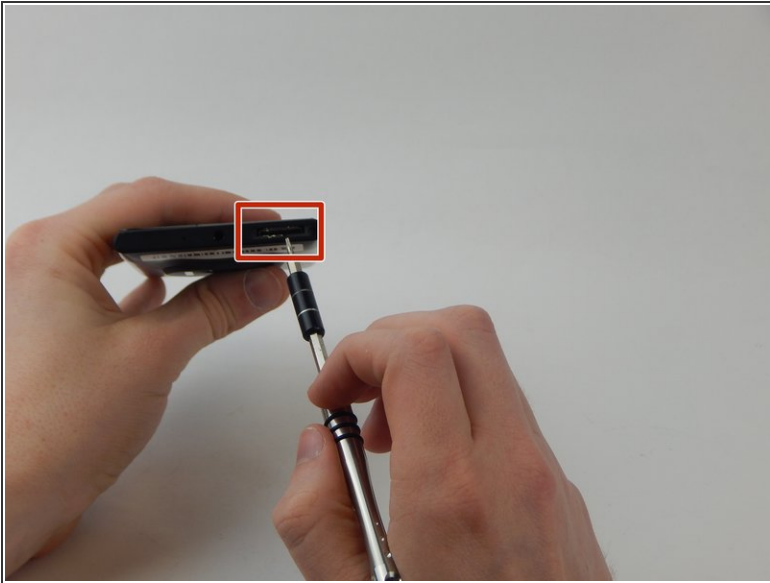
INTRODUCTION

Removing and replacing the front-facing camera of the Nokia Lumia 1020 requires removal of the screen.

TOOLS:

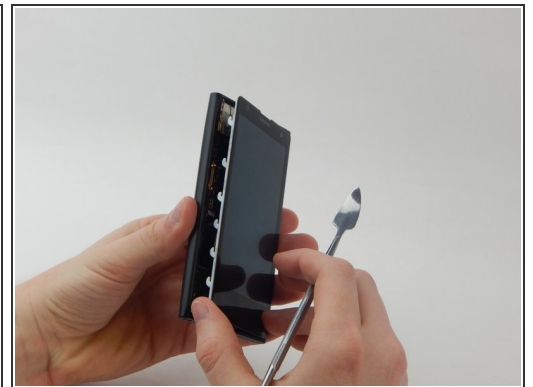
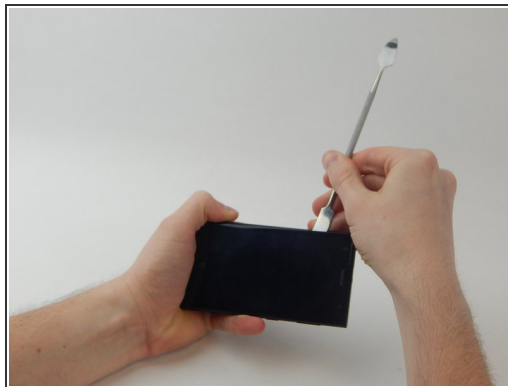
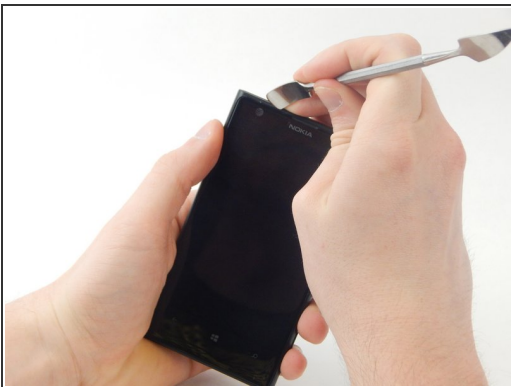
- [T4 Torx Screwdriver](#) (1)
 - [T6 Torx Screwdriver](#) (1)
 - [ESD Safe Tweezers Blunt Nose](#) (1)
 - [Spudger](#) (1)
-

Step 1 — Screen



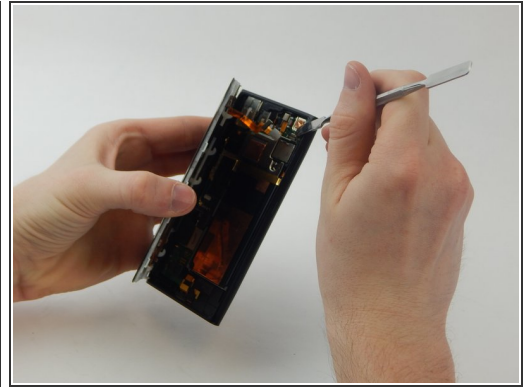
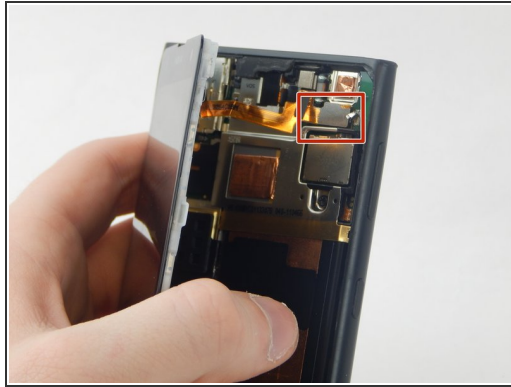
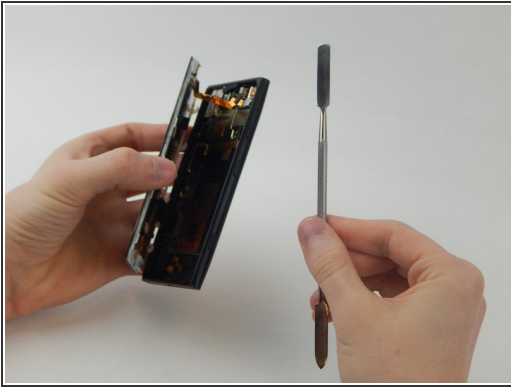
- Use a SIM door key to remove the SIM card and SIM card tray from the device.
- Use a T4 screwdriver to loosen the captured torx screw to the right of the SIM card tray (the screw will not come out).

Step 2



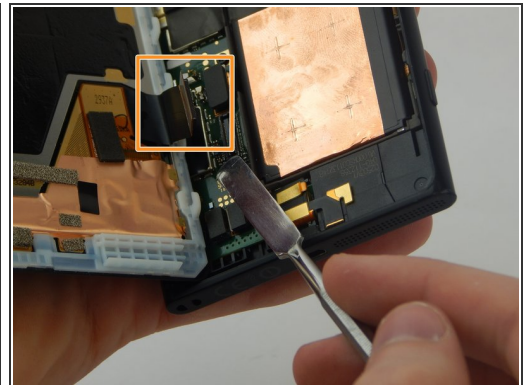
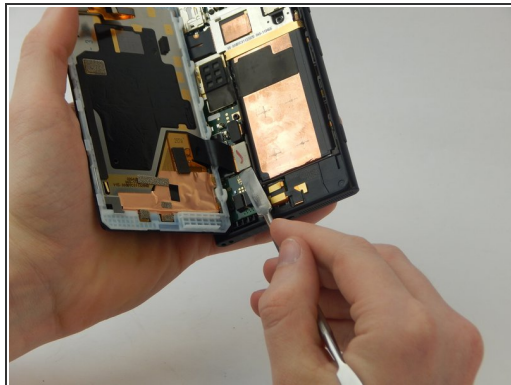
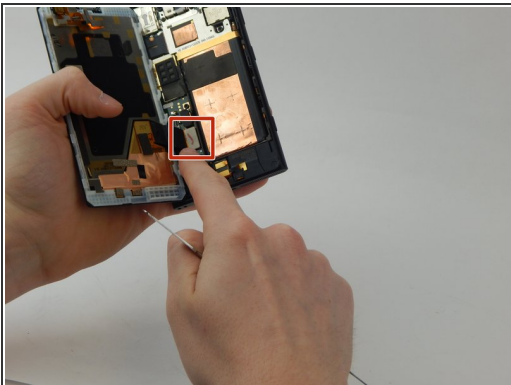
- Wedge a spudger in between the screen and the back of the device, starting from the top left corner of the phone.
- Gently pry the screen away from the back of the device using slight upward pressure.
- Slide the spudger down towards the bottom left corner of the device, continuing to gently pry upwards. The screen will now be slightly separated from the back of the phone.

Step 3



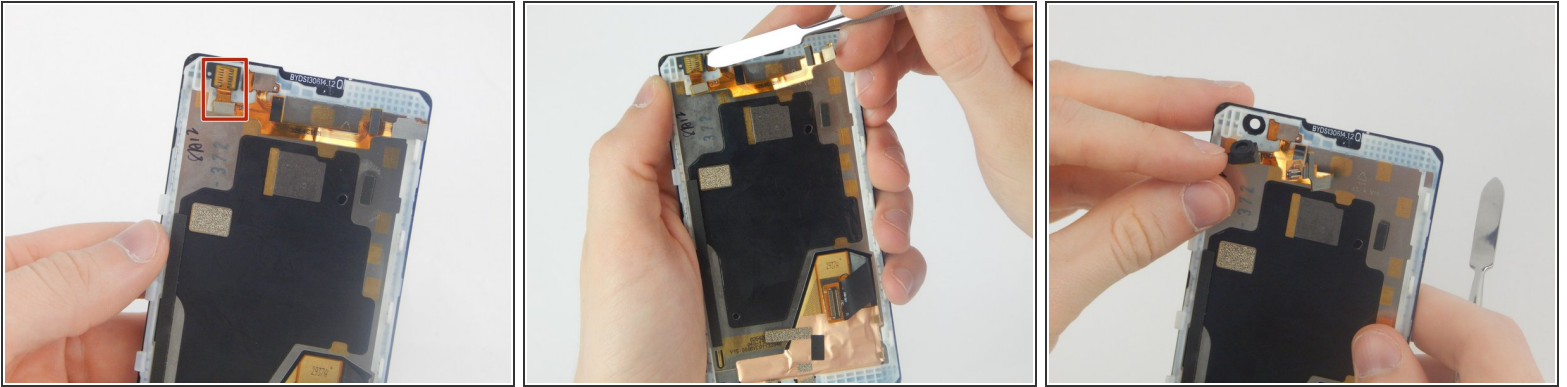
- Wedge a spudger underneath the silver rectangle in the upper right corner until it pops off the back of the phone.

Step 4



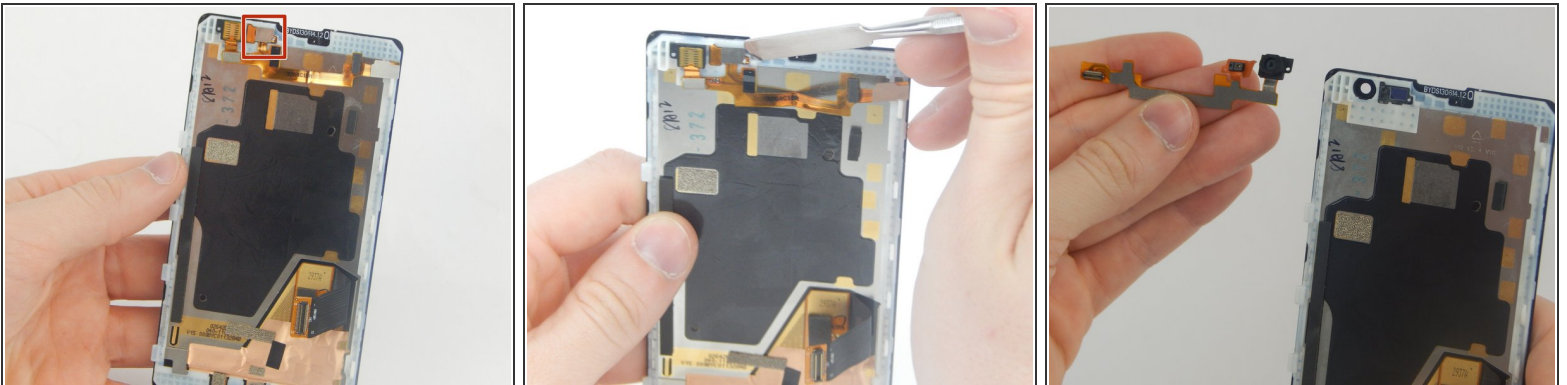
- Wedge a spudger underneath the silver rectangle in the lower left corner until it pops off the back of the phone.
- Completely remove the screen from the back of the phone.

Step 5 — Front-Facing Camera



- Wedge a spudger underneath front-facing camera on the upper left corner of the screen. Pry upwards until it pops up to the right.

Step 6



- Wedge a spudger underneath the silver rectangle to the right of the front-facing camera. Pry upwards until it pops off.
- Remove the camera.

To reassemble your device, follow these instructions in reverse order.