



Nokia Lumia 1020 Rear-Facing Camera Replacement

This guide explains how to replace the Nokia Lumia 1020's rear-facing camera.

Written By: Sydney Hostalley



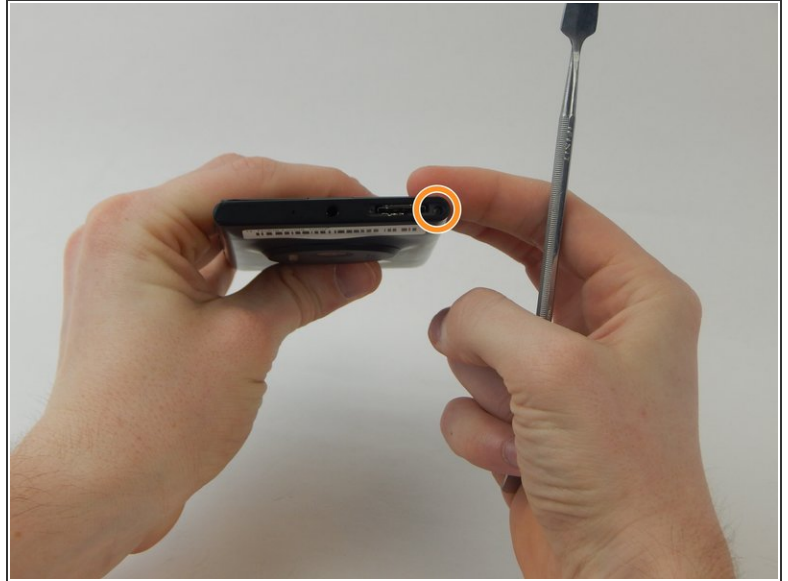
INTRODUCTION

Replacing the rear-facing camera of the Nokia Lumia 1020 requires removal of the phone's screen.

TOOLS:

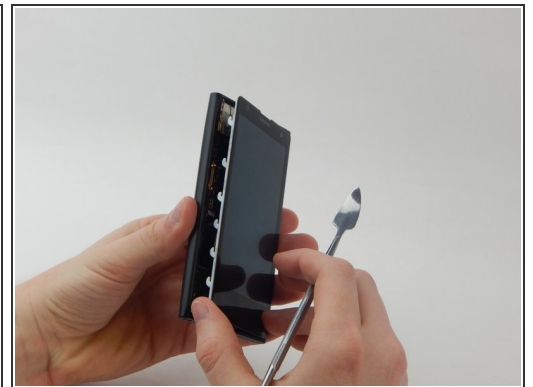
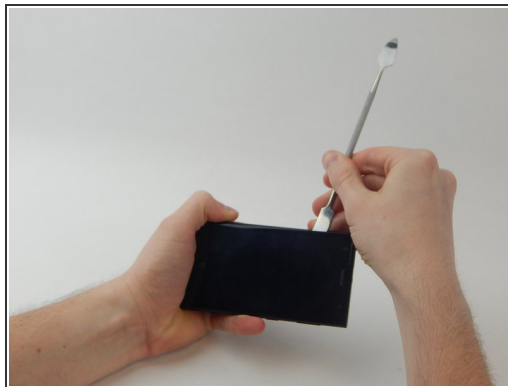
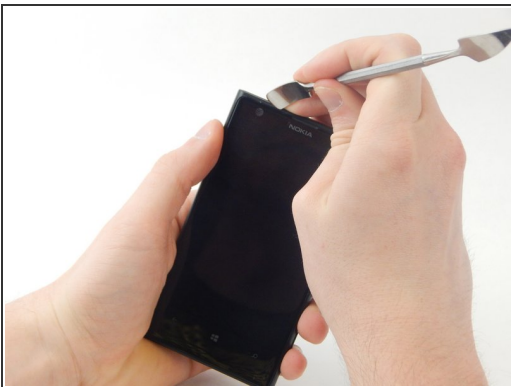
- [T4 Torx Screwdriver](#) (1)
 - [T6 Torx Screwdriver](#) (1)
 - [ESD Safe Tweezers Blunt Nose](#) (1)
 - [Spudger](#) (1)
-

Step 1 — Screen



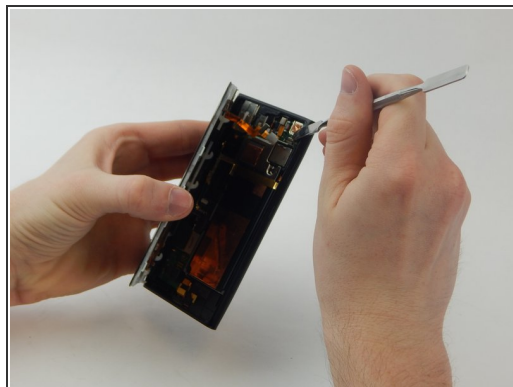
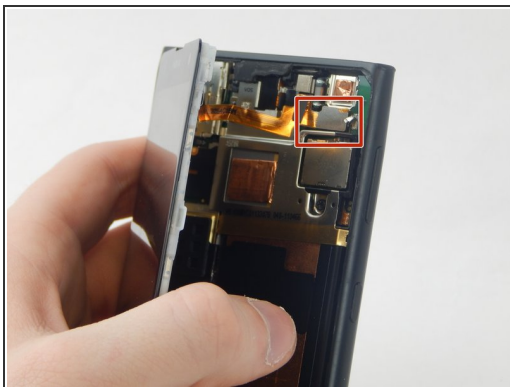
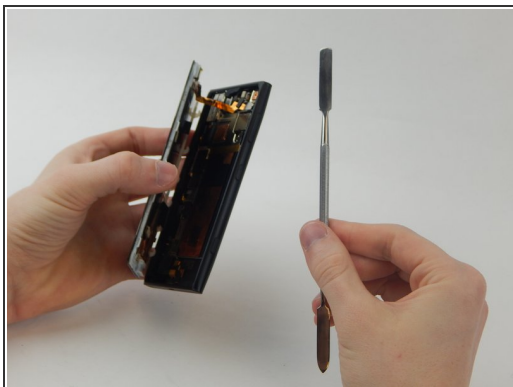
- Use a SIM door key to remove the SIM card and SIM card tray from the device.
- Use a T4 screwdriver to loosen the captured torx screw to the right of the SIM card tray (the screw will not come out).

Step 2



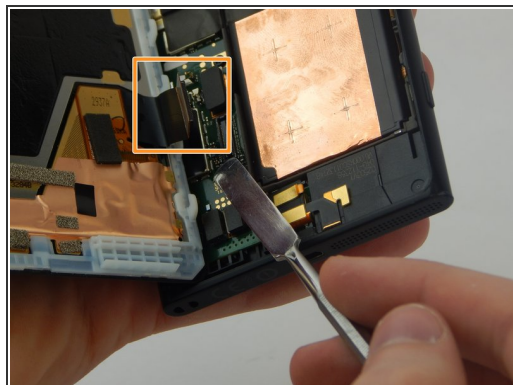
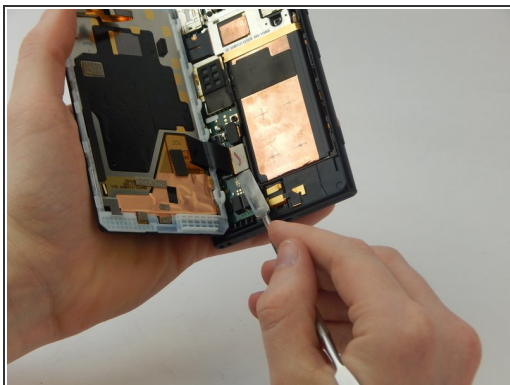
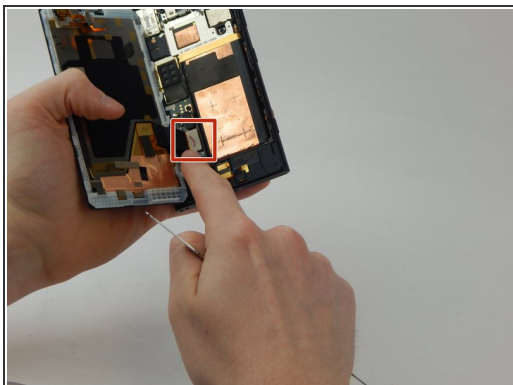
- Wedge a spudger in between the screen and the back of the device, starting from the top left corner of the phone.
- Gently pry the screen away from the back of the device using slight upward pressure.
- Slide the spudger down towards the bottom left corner of the device, continuing to gently pry upwards. The screen will now be slightly separated from the back of the phone.

Step 3



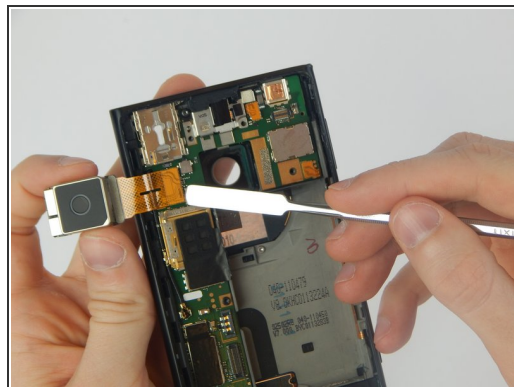
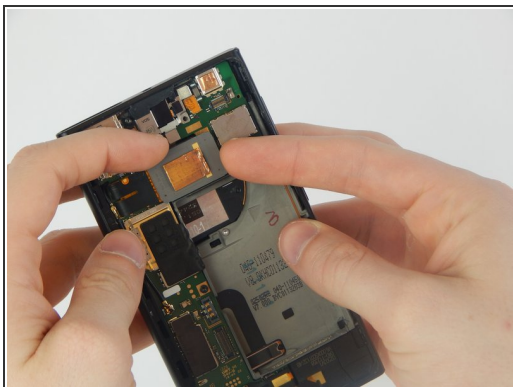
- Wedge a spudger underneath the silver rectangle in the upper right corner until it pops off the back of the phone.

Step 4



- Wedge a spudger underneath the silver rectangle in the lower left corner until it pops off the back of the phone.
- Completely remove the screen from the back of the phone.

Step 5 — Rear-Facing Camera



- Use your fingernail to grip the rear-facing camera on the upper middle part of the back of the phone. Pry until it pops off to the left.
- Remove the camera by wedging a spudger underneath the attached gold foil.

To reassemble your device, follow these instructions in reverse order.