



# Nokia Lumia 1520 Teardown

Written By: alcs99

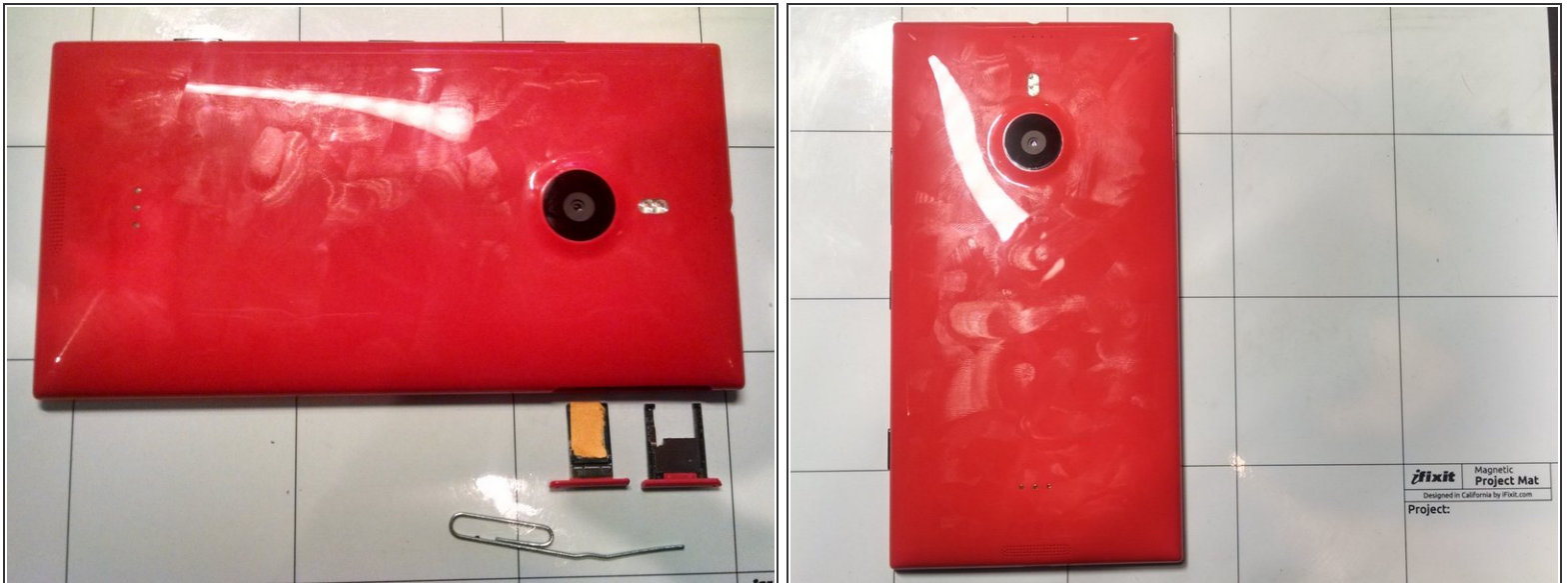




## TOOLS:

- [SIM Card Eject Tool](#) (1)
- [0.7 mm Hex Screwdriver](#) (1)
- [iFixit Opening Picks set of 6](#) (1)
- [T4 Torx Screwdriver](#) (1)
- [Tweezers](#) (1)
- [iOpener](#) (1)

## Step 1 — Nokia Lumia 1520 Teardown



- Remove the SIM card and micro SD trays using a paperclip or SIM card remover to eject the trays.

## Step 2 — Unlock the Frame



- The plastic frame is locked to the internals by a single screw located between the SIM and micro SD slots.
- Remove the QR code sticker to reveal the screw.
- Unscrew using a 0.7mm Hex screwdriver

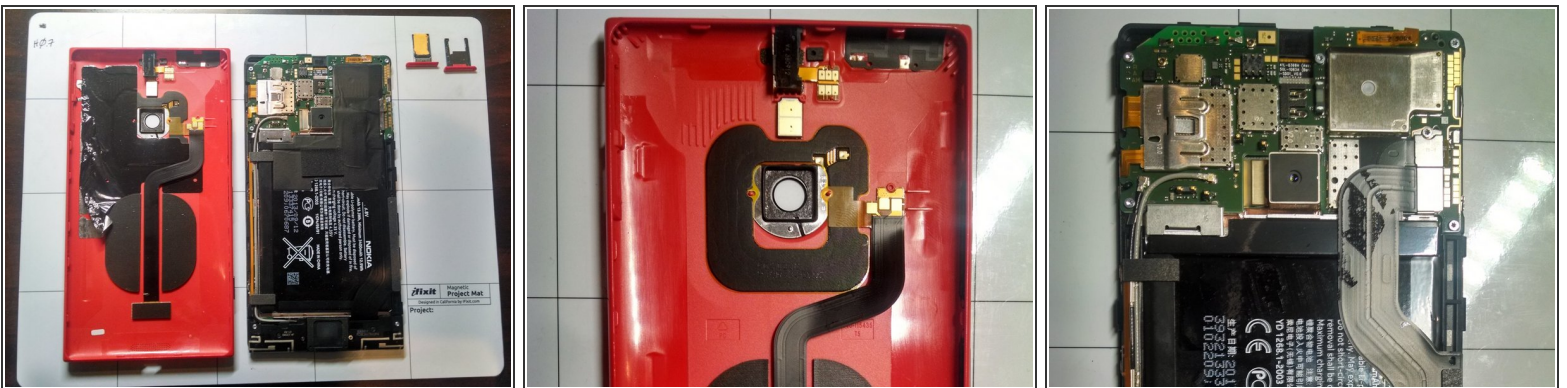


### Step 3 — Remove the Red Plastic Frame



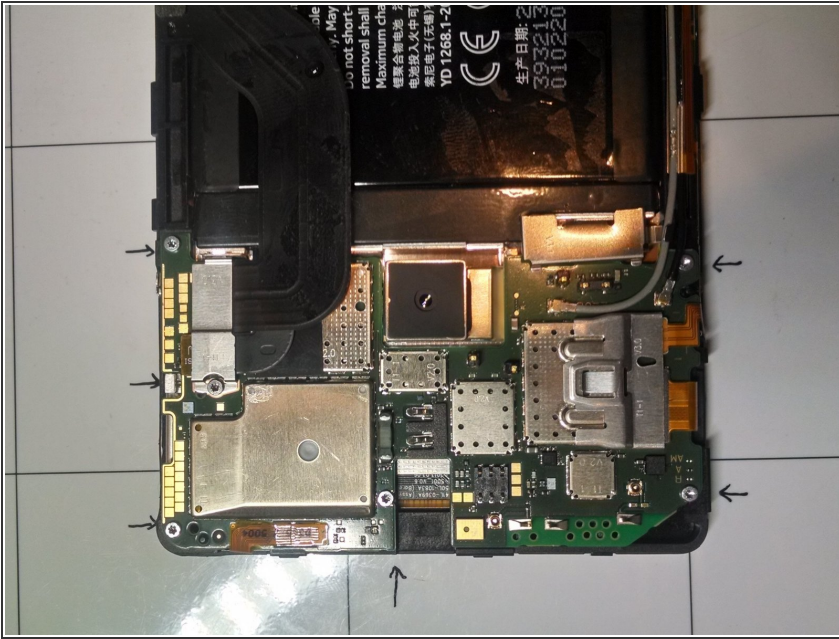
- Using plastic picks, begin to separate the frame from the internals at the corner of the phone containing the SIM tray.
- Work around the top of the device placing more picks between the frame and the internals.
- Once the top is removed from the Plastic frame work down the sides and remove the plastic frame.

### Step 4 — First Sight of the Internals



- With the frame removed we can get a look at the internals.

## Step 5 — Unscrew Motherboard



- Remove the six T4 screws indicated in the image.

## Step 6 — Remove Metal Strap



- Lift up and remove the metal strap that covers the pop connector on the board.



## Step 7 — Slide Away Metal Strap



- Slide away the other metal strap that covers more pop connectors.

## Step 8 — Demate Connector



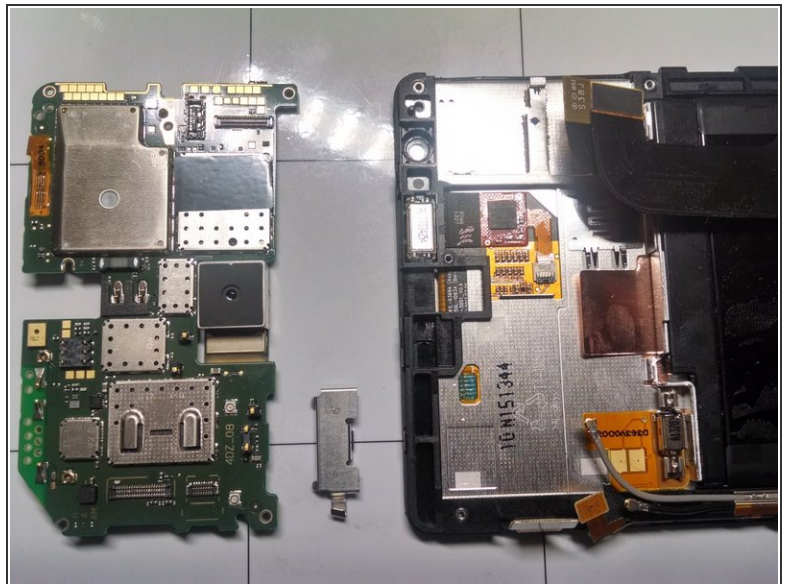
- Gently lift up on the four pop connectors to demate and remove them from the board.

## Step 9 — Disconnect Coaxial Cables



- Remove the two coaxial cables by gently lifting up.

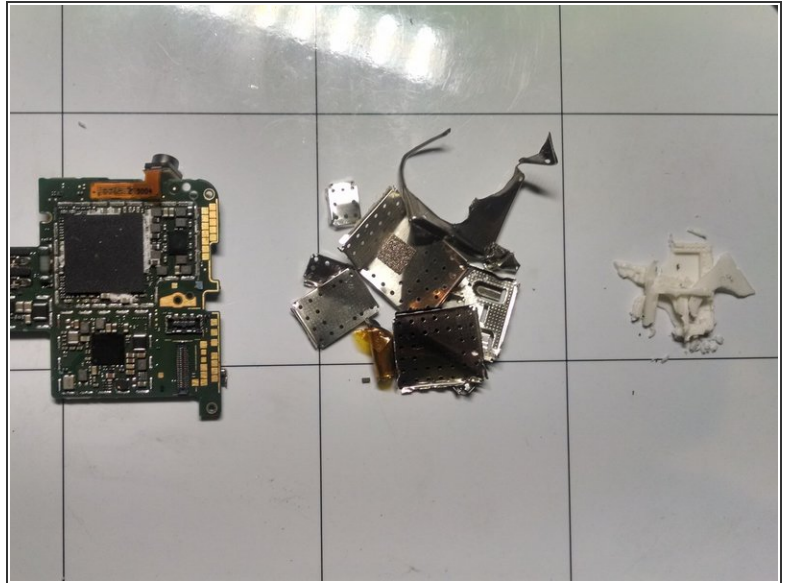
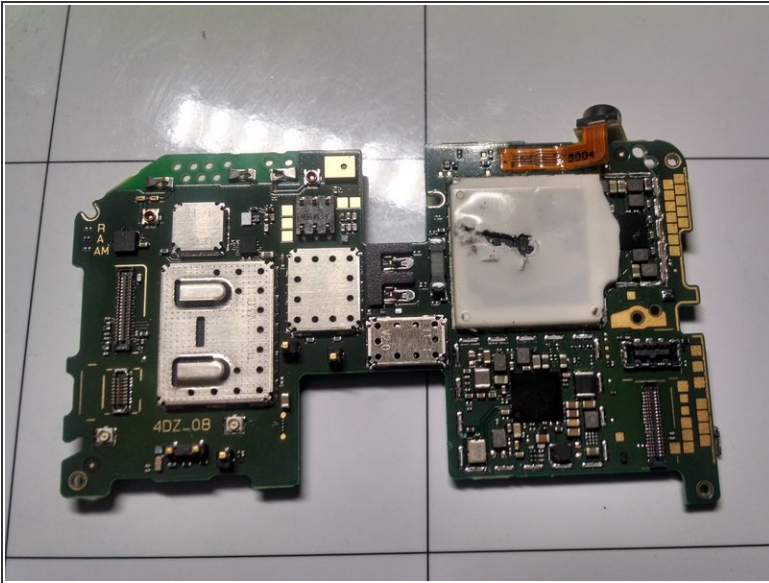
## Step 10 — Remove the Motherboard



- The motherboard can now be lifted from the unit.



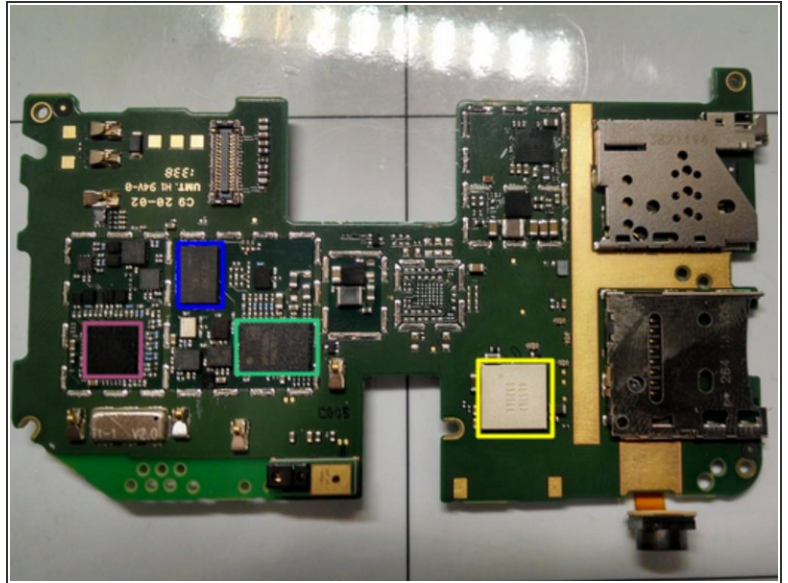
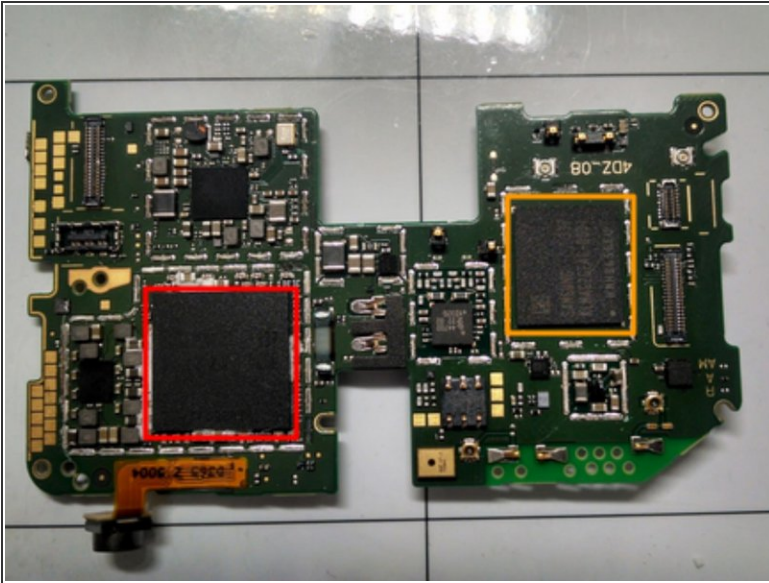
## Step 11 — Shielding and Thermal Paste Removal



- The board level shielding was soldered to the board and required prying and breaking to reveal the chips.
- Once the board level shielding was removed, the silicone thermally conductive rubber was scraped away from the processor.

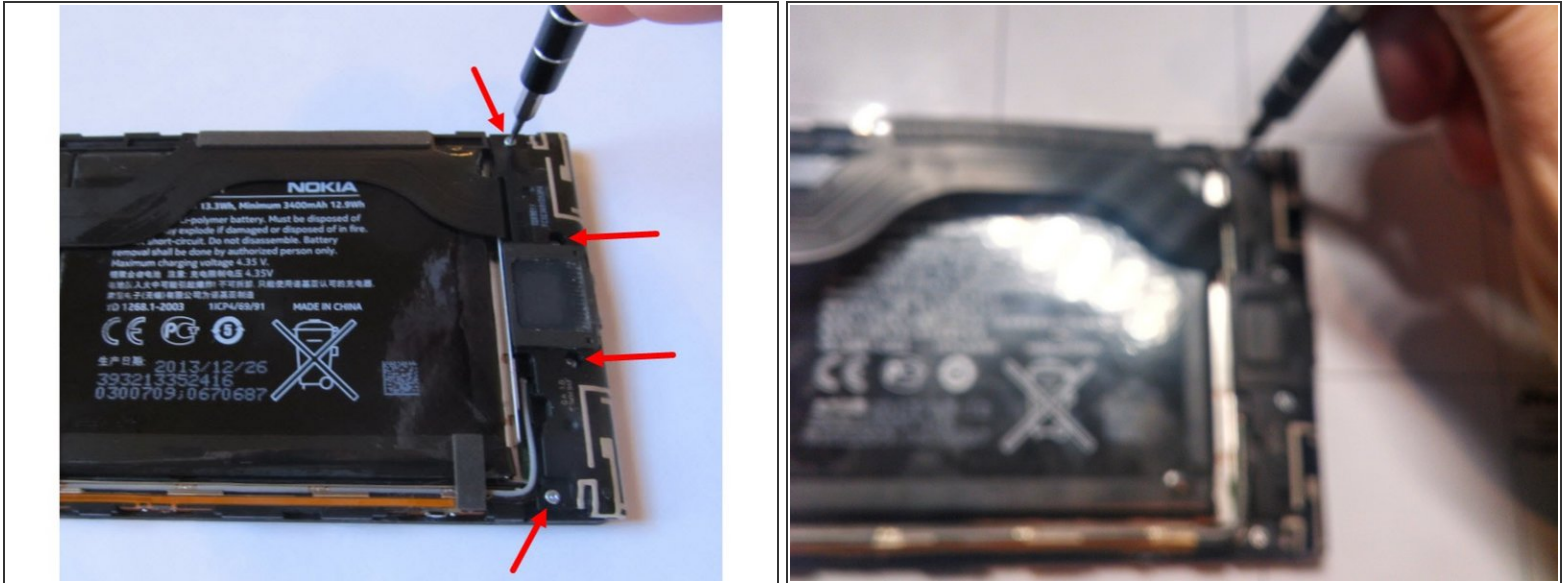


## Step 12 — The Motherboard Bares All



- Samsung KLMAG2GEAC-B001 HMHB656EU 337
- Samsung K3QF2F2ODM OGCE 6F63209X 337
- 405707 D925A4
- RF7459A F14L10Y
- SWH GMF81
- WTR1605L OVV PPV438Z2 AB31801 10

## Step 13 — Removal of the Antenna Module



- The antenna module is adhered to a daughter board with a soft sticky adhesive.
- Remove the Antenna module by removing four T4 screws.

## Step 14 — Removal of the Antenna Module



- Remove the coaxial antenna cables by gently prying them up.
- The Daughterboard and flex cable come out of the phone easily.
- At this point we can see the USB connector is soldered to the board making replacement of this component expensive.



## Step 15 — Battery Removal



- The battery is adhered quite strongly to the assembly.
- A couple rounds of hot iOpener application followed by aggressive prying with plastic picks and metal tools was required to remove the battery.

## Step 16 — Views of The Battery and Bare Touchscreen Assembly



- Views of The Battery and Bare Touchscreen Assembly

To reassemble your device, follow these instructions in reverse order.