



# Nokia Lumia 2520 Cameras Replacement

Written By: Degan Berhe





## TOOLS:

- [iFixit Pro Tech Toolkit](#) (1)
- [Heat Pad](#) (1)
- [iFixit Opening Picks set of 6](#) (1)
- [Spudger](#) (1)

## Step 1 — Display Assembly

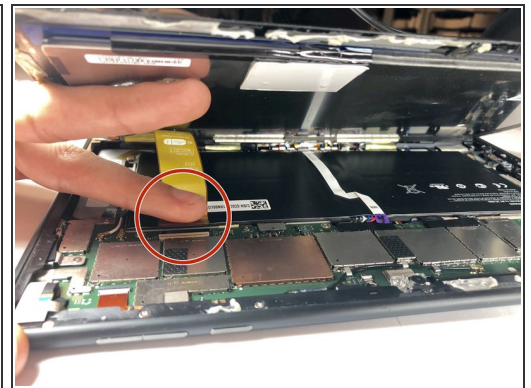


- Apply heat pad to each side of the device.

⚠ When using any heat pad please use some form of padded gloves so you don't burn your fingers.

ⓘ Microwave the pad for 30 seconds so an ample amount of heat is given on all four sides. Do not microwave more than once every two minutes.

## Step 2



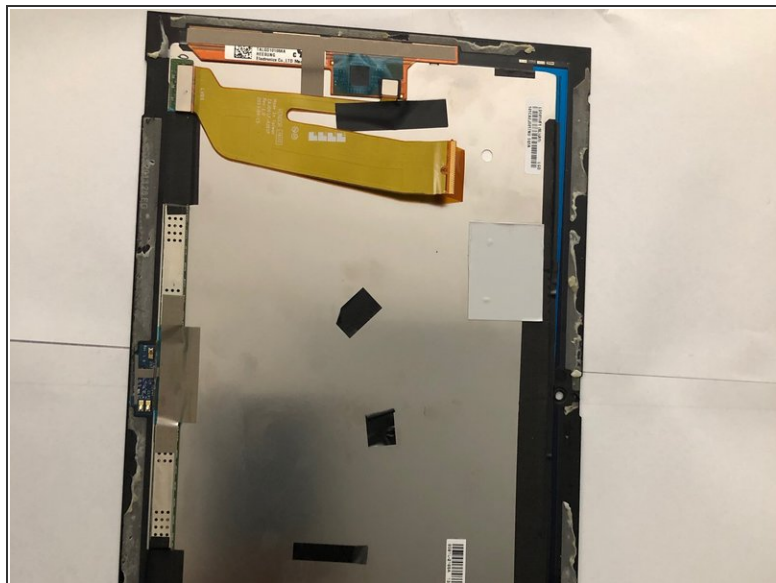
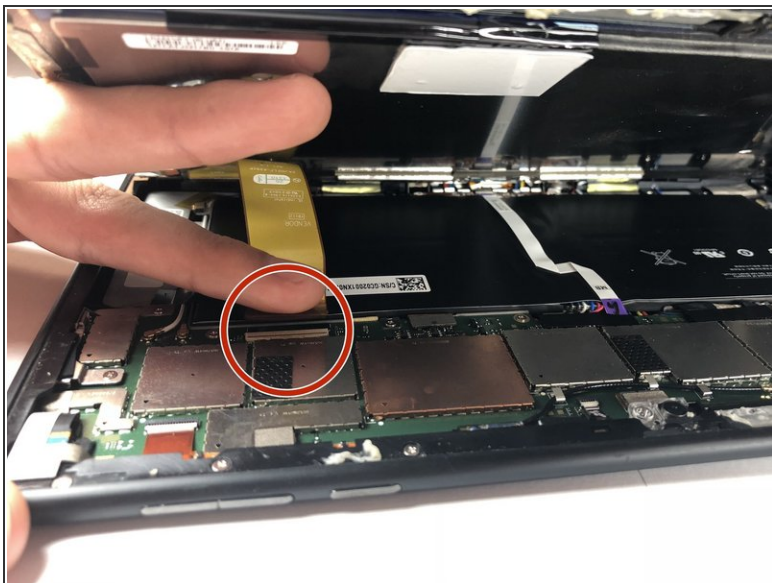
- Insert the pick between the glass to separate the glass from the device. You can also use the suction cups to help lift the glass.

⚠ When pulling the screen off the chassis be careful not to cut the ribbon cable that connects the screen to the logic board.

⚡ Take your time to pry open the screen from the chassis. In this process you can easily break the screen or crack it.

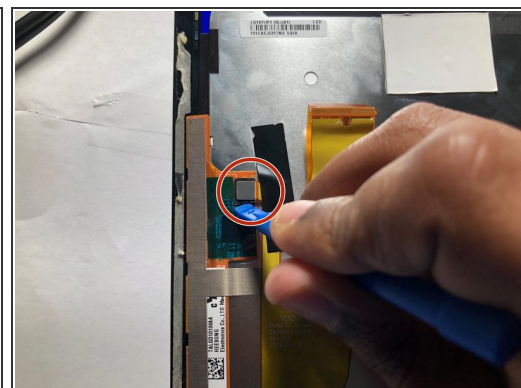
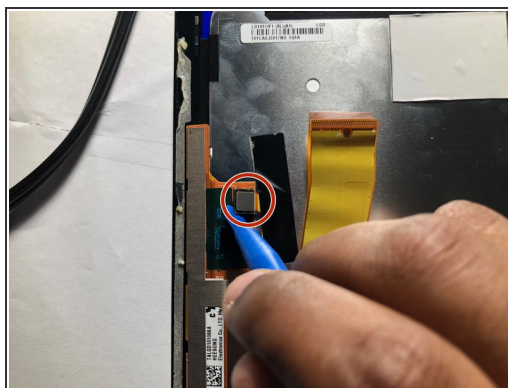
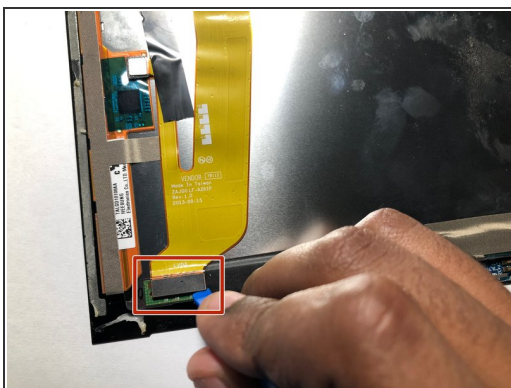


## Step 3



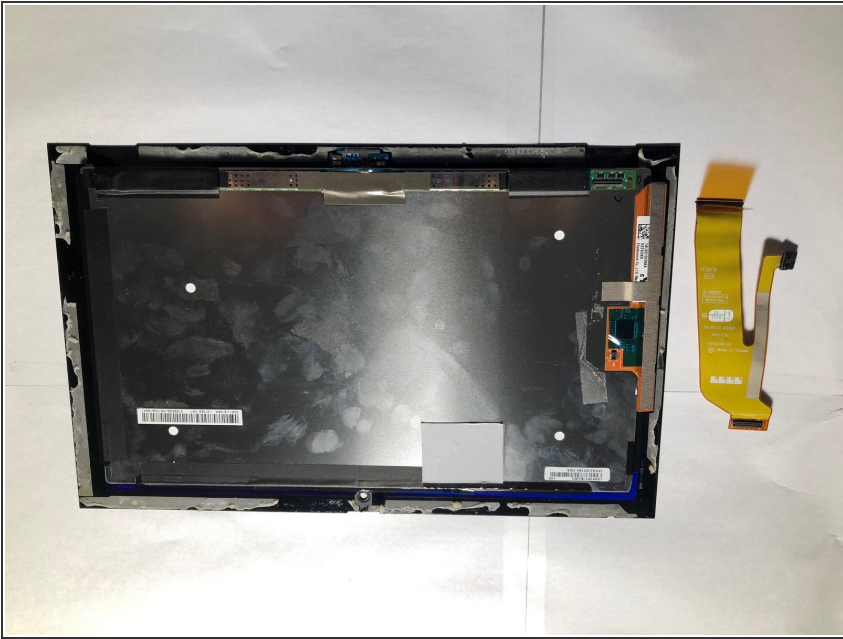
- Pull out the ribbon cable from its connection
- Once that done move on to remove the ribbon connection from the screen.

## Step 4



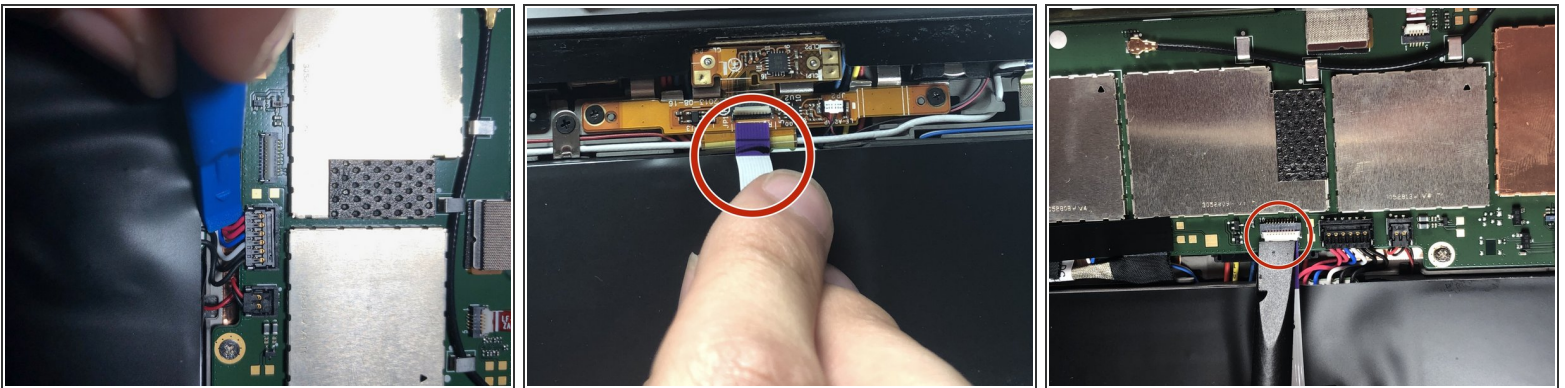
- Use the plastic pry tool to remove one of the connection.


## Step 5




- Once down everything is completed.

## Step 6 — Battery



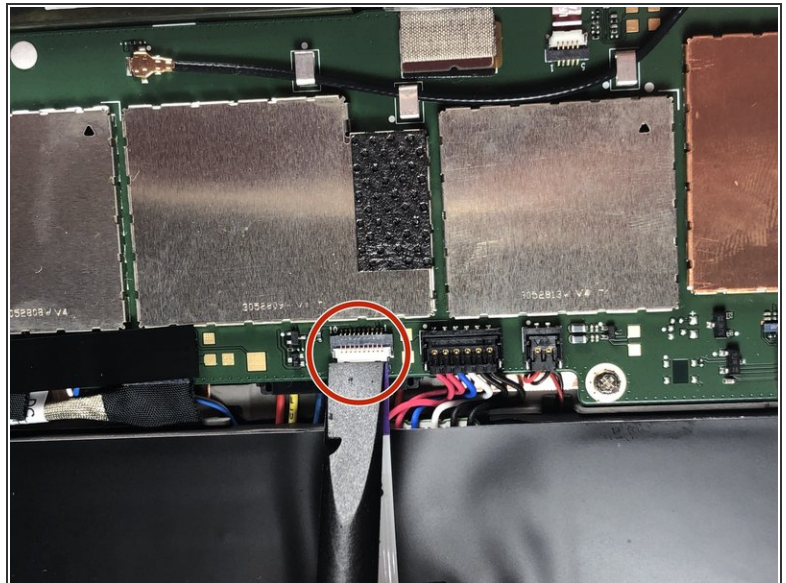
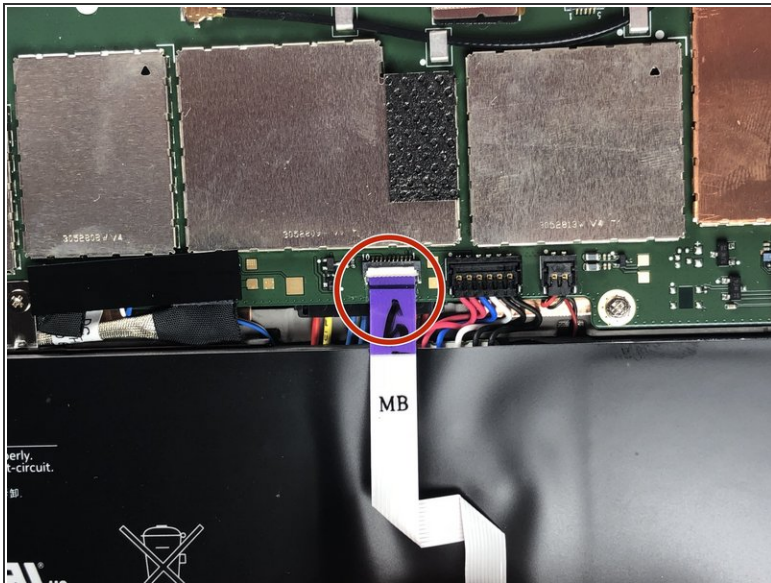
 Before removing the battery from the device be sure not to puncture the battery. Since the battery is a form of acid.

 Using a plastic pry tool is better than a metal tool when working with wire and soft case battery case.

- Use a plastic pry tool to remove the battery connector from the logic board.

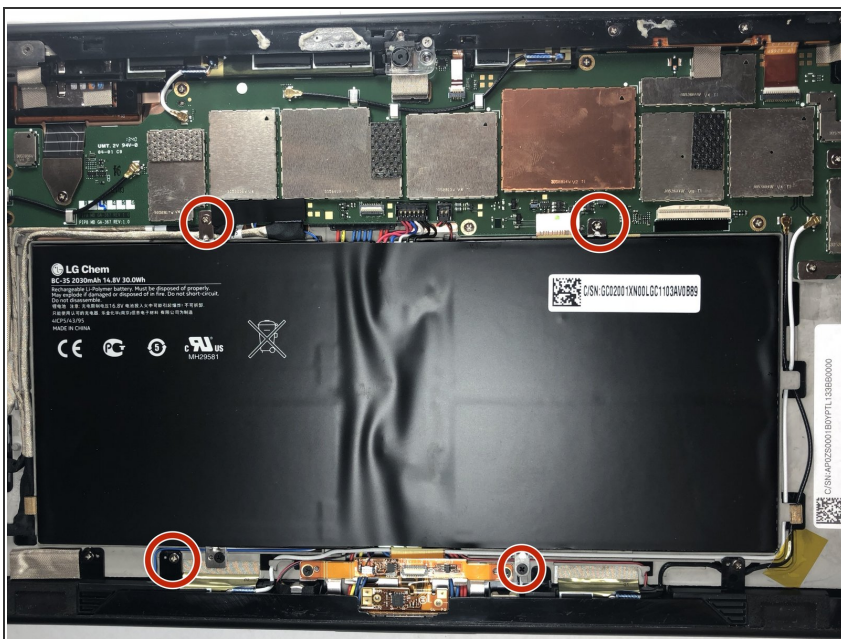


## Step 7



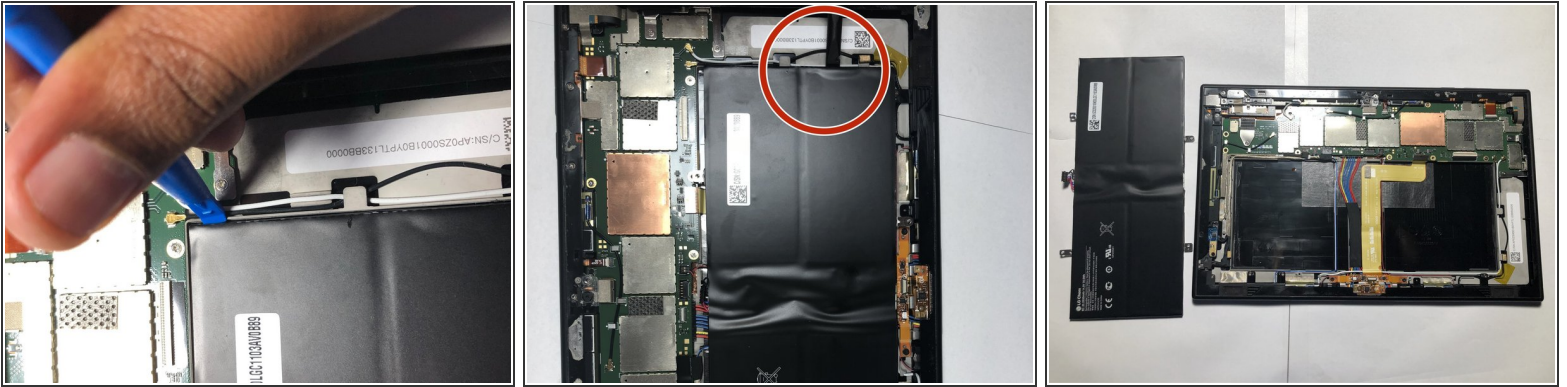
- Remove the ribbon located over the battery.

## Step 8



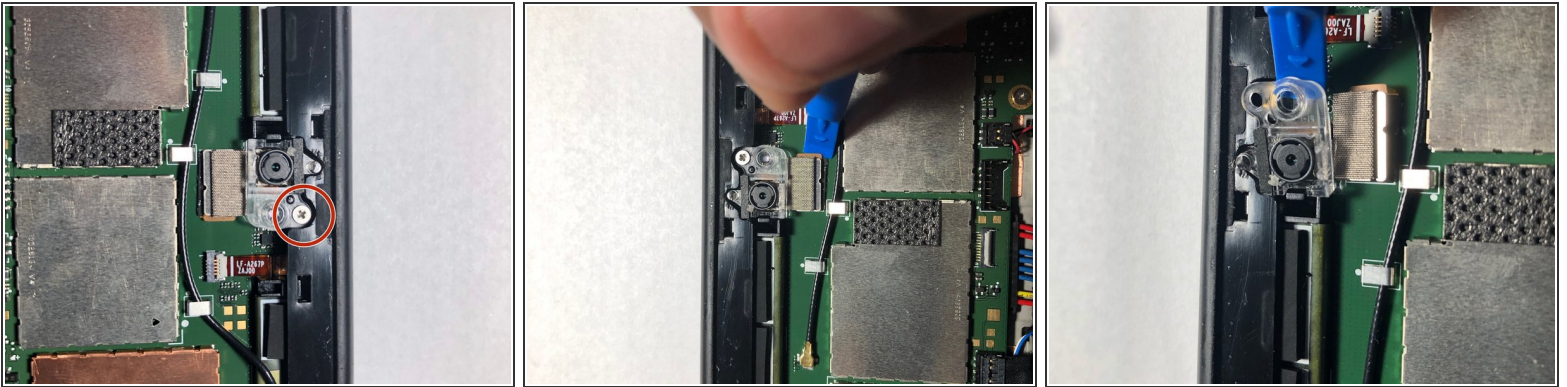
- There are four screws that attach the battery to the chassis. Use a PH0 Phillips head screwdriver to loosen the screw.
- ⚠ Since the tool using is sharp please use with caution, so that you don't puncture the battery.

## Step 9



- Take a plastic pry to to pry out the battery from its casing.
- i** The bottom of the battery has adhesive to hold the battery in place. So using enough pressure to pry the battery is ok .
- Using two tool different plastic pry to can help give you leverage on areas that are hard to get up.

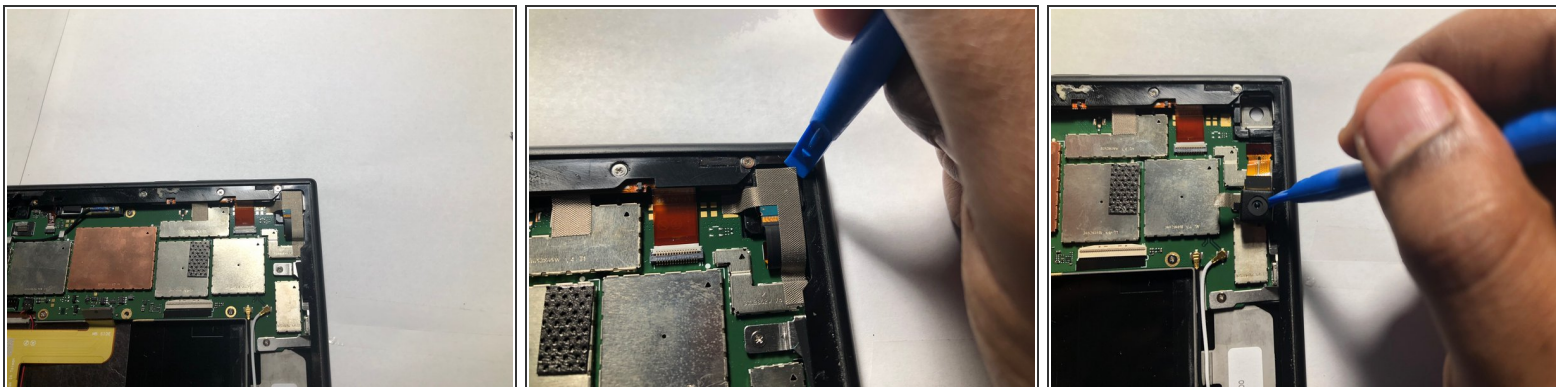
## Step 10 — Cameras



- Take a PH0 Phillips head screw bit to take the screw out.
- Take a pry tool and disconnect the ribbon cable from the logic board
- Then use a plastic pry tool and take out the front facing camera out of its housing.
- i** The front facing camera is glued on so use some force to pry it off.

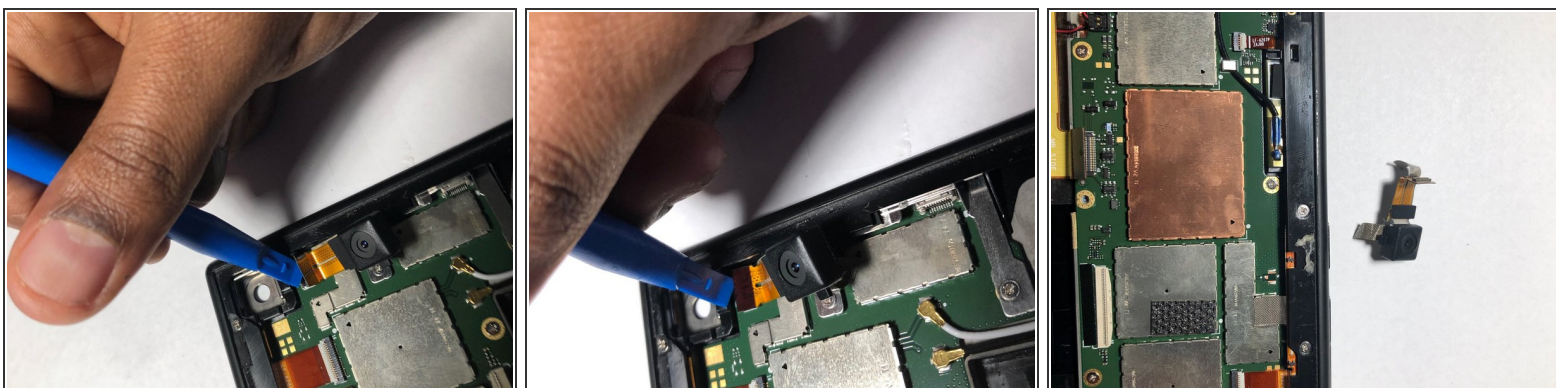


## Step 11



- Locate the rear facing camera. which is located on the top right side of the case.
- Take a plastic pry tool to pill the tape and camera from its housing.

## Step 12



- Take the pry tool and remove the ribbon cable from the logic board.

To reassemble your device, follow these instructions in reverse order.