



Nokia Lumia 520 Power/Volume Switch Replacement

The guide will provide a step by step tutorial on how to replace your malfunctioning power/volume button.

Written By: Eduardo Perez



INTRODUCTION

After many attempts of pushing the buttons, and failing to get a response. It may be time to replace your malfunctioning volume and power buttons. This repair guide has qualities required for your particular repair needs for the Nokia 520.



TOOLS:

- [Spudger](#) (1)
- [T4 Torx Screwdriver](#) (1)
- [Small Needle Nose Pliers](#) (1)



PARTS:

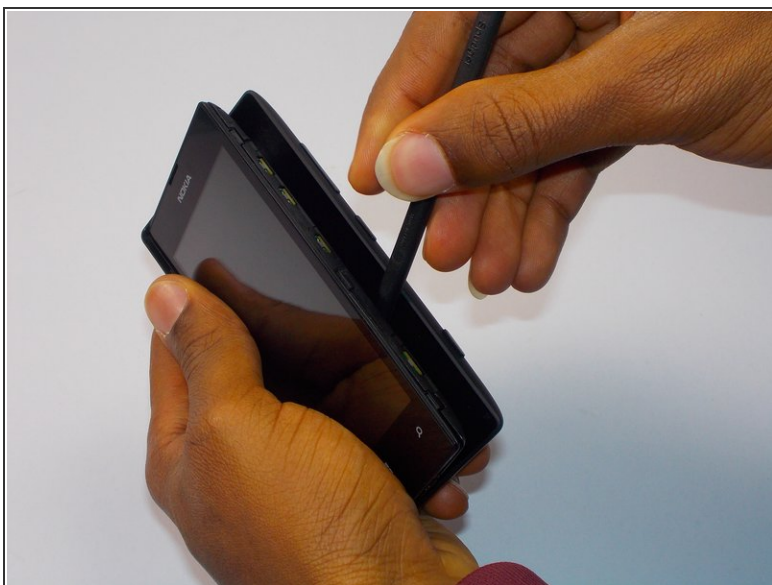
- [Power Switch](#) (1)

Step 1 — Battery



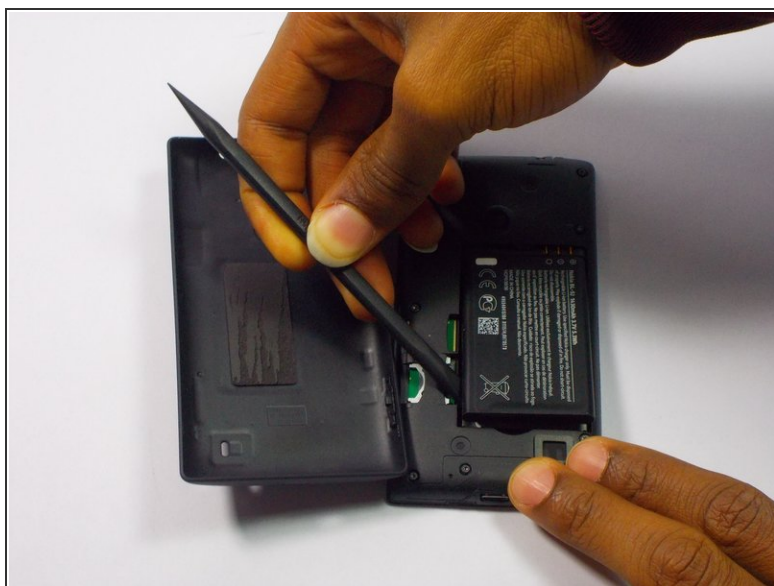
- Insert the spudger into the crevice located between the back cover of the phone and the body of the phone.

Step 2



- Lift the spudger gently to open the back cover of the phone.

Step 3



- Insert the spudger into the space between the battery and the battery holder to remove the battery.

Step 4 — Power/Volume Switch



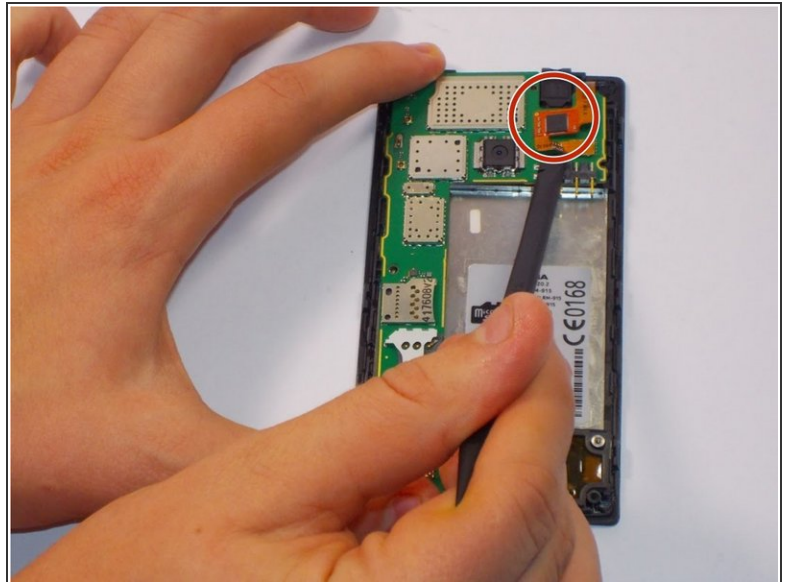
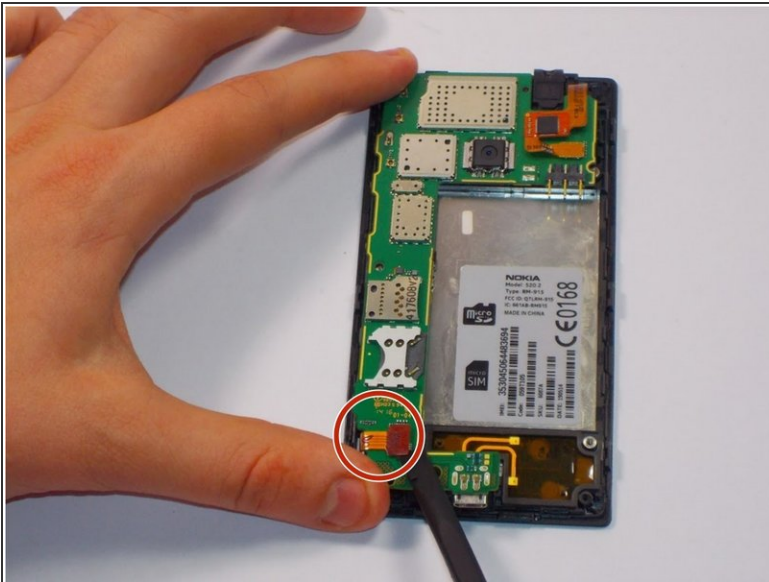
- Unscrew the 8 screws with a Torx screw driver (T4). After all screws are unscrewed place them next to the phone in the order

Step 5



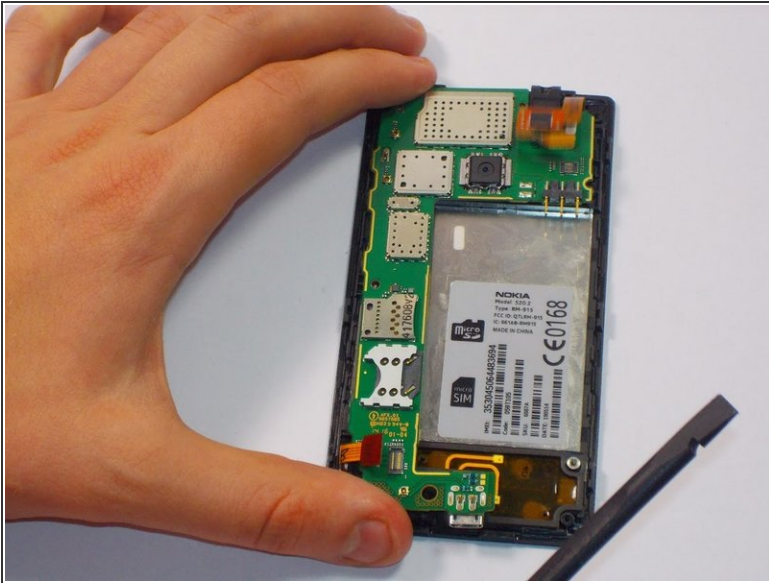
- Use your spudger to remove the plastic casing over the motherboard. Do it very slowly because it will be tough to remove and you do not want to break it.

Step 6



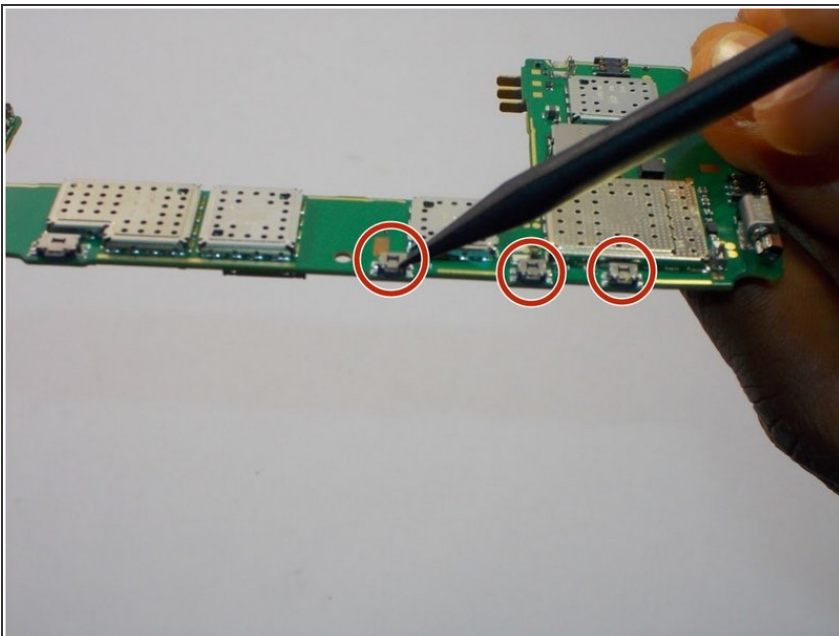
- Carefully unclip the digitizer touch screen cable and the display screen cable using a spudger.

Step 7



- Gently remove the motherboard with your hands.
- Flip it over and turn it 90 degrees to the left so the buttons are in front of you.
- ⓘ You will see four small switches close to the side of the circuit board.

Step 8



- Gently take the power/volume switches off using a pair of needle nose pliers. Gently clean the solder that was there. Replace the solder with a new coat of solder.
- ⓘ Check out iFixit's soldering guides, [here](#).

To reassemble your device, follow these instructions in reverse order.