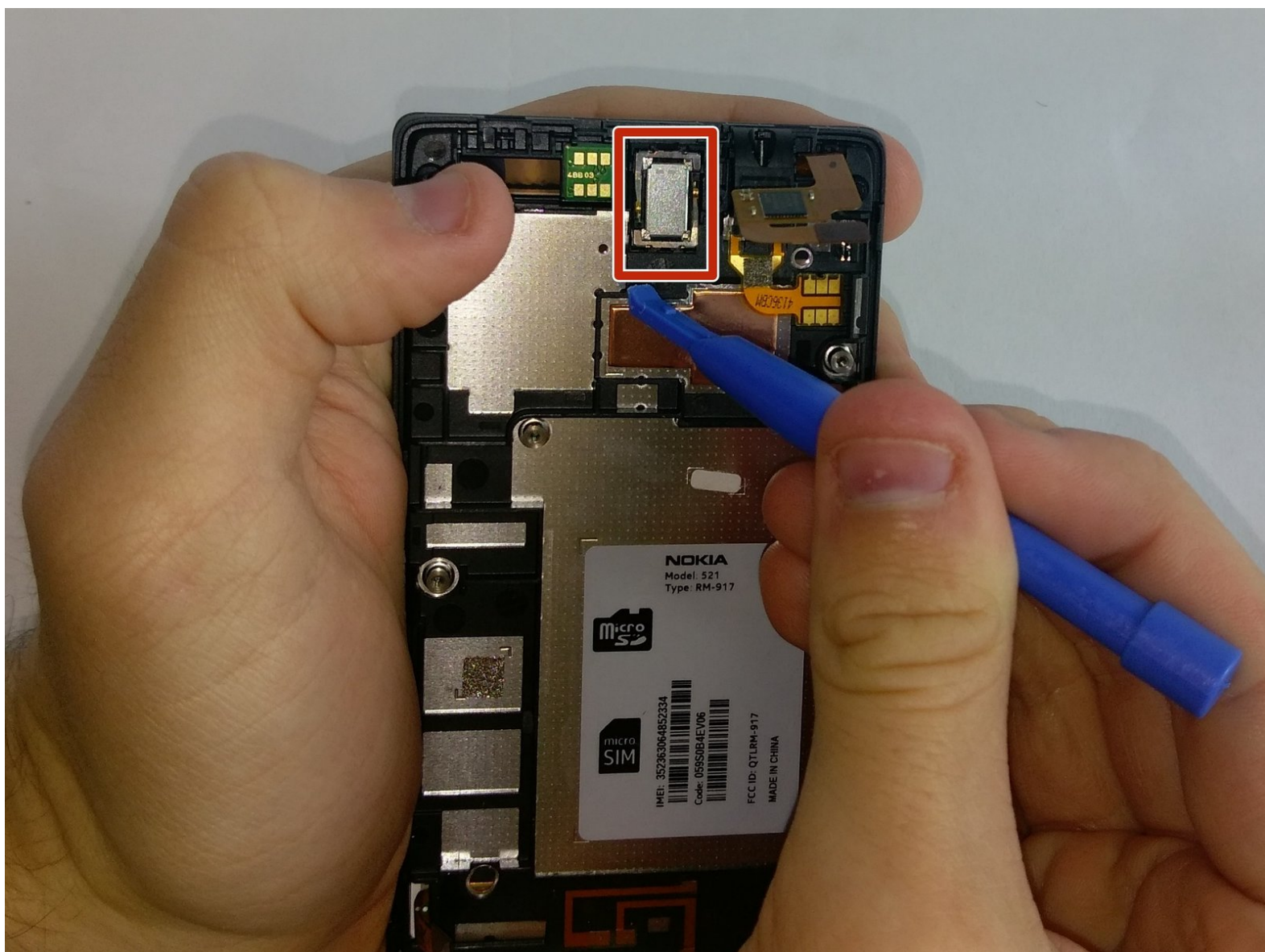




Nokia Lumia 521 Ear Speaker

Are you having trouble hearing the person on the other end of the line during a phone conversation? Follow along with this guide to learn how to replace the ear speaker for the Nokia Lumia 521.

Written By: Destiny Jenkins



INTRODUCTION

The ear speaker is the small silver box located just underneath the motherboard. Removing of this part involves only some careful prying with the plastic opening tool.

TOOLS:

- [iFixit Opening Tools](#) (1)
 - [T5 Torx Screwdriver](#) (1)
-

Step 1 — Battery



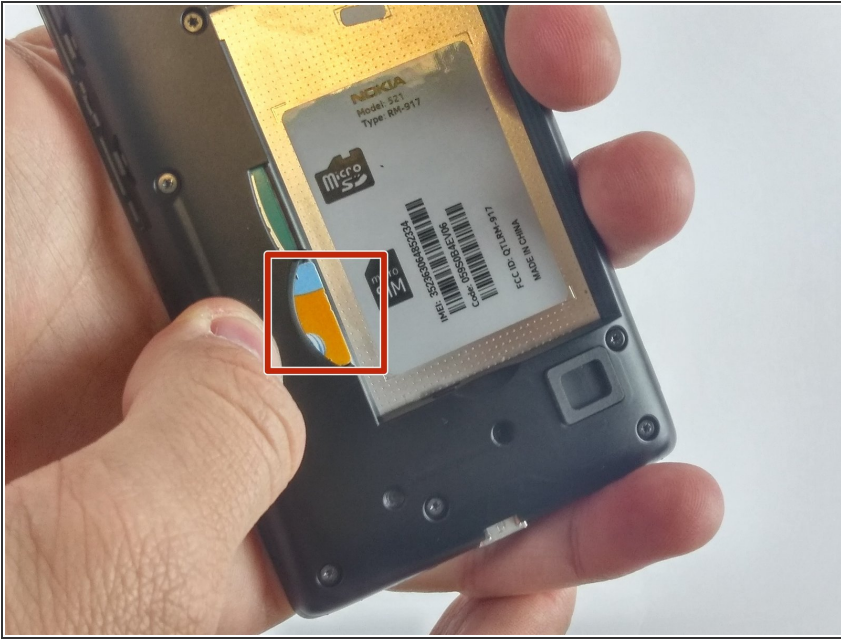
- Push the plastic opening tool in between the screen and the back case of the phone.
- Pry the top of the phone between the case and screen until they are separated.

Step 2



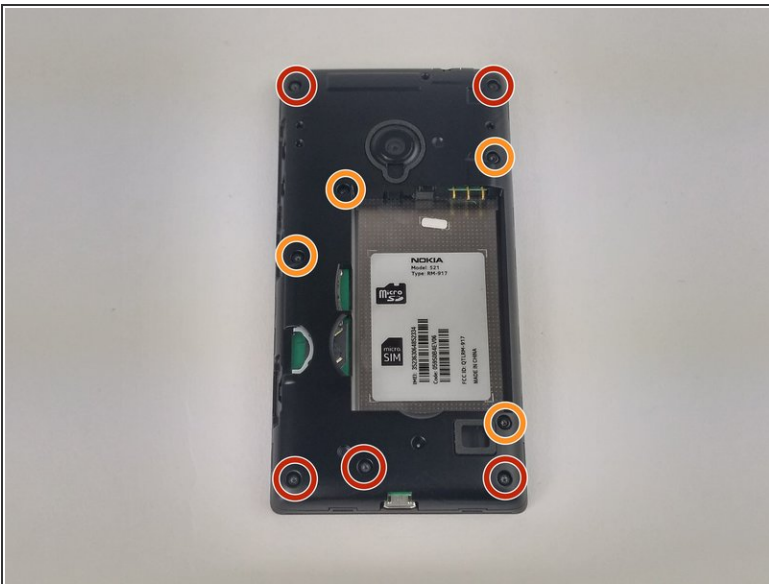
- Once the cover has been removed, the battery will be visible. Grab the plastic tab and pull it to remove the battery from its place. If there is no plastic tab, use the plastic opening tool to pry the battery loose.

Step 3 — SIM Card



- After the battery is removed, push the SIM card from the left side with your thumb until it is loose.

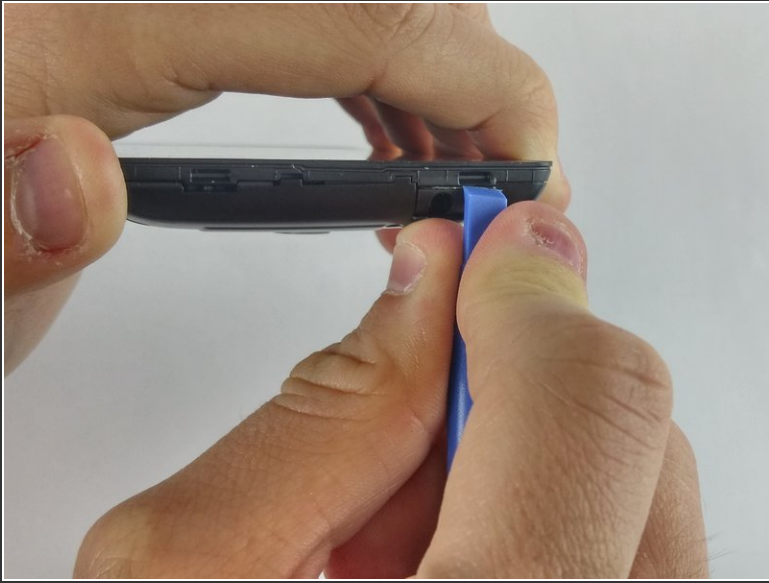
Step 4 — Motherboard



- Using the Torx T5 screw head, remove all screws. Note that there are two different sized screws. Five screws are 5 mm long and four are 4 mm long.
- Five 5 mm screws.
- Four 4 mm screws.

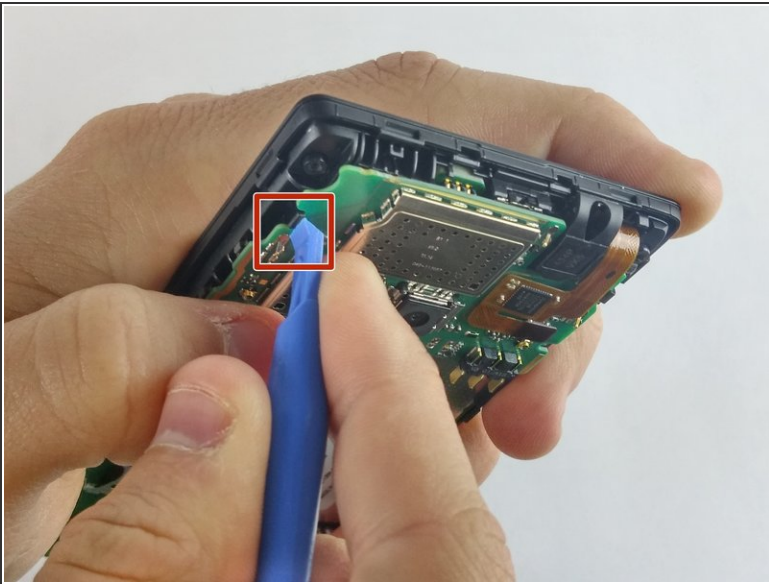
This document was generated on 2019-10-02 03:15:15 PM (MST).

Step 5



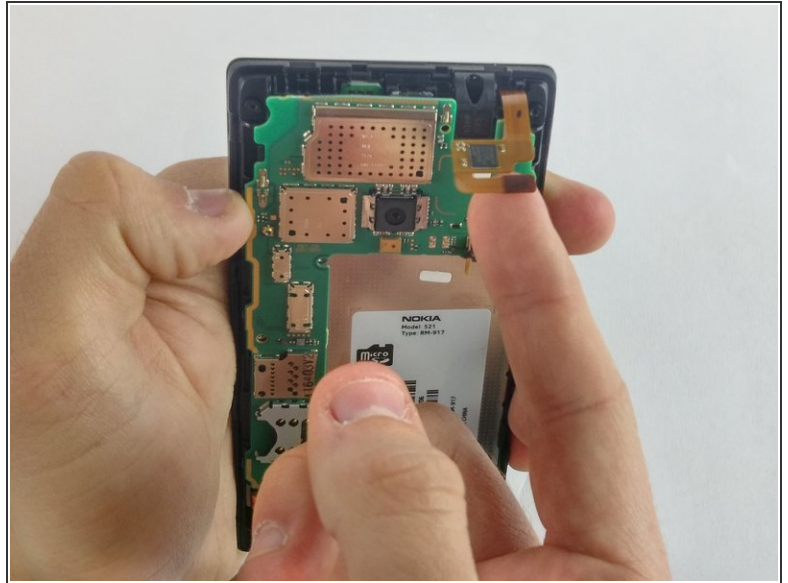
- Using a plastic opening tool, pry apart the inner back case apart from the rest of the phone, starting at the top and prying while going around the phone.

Step 6



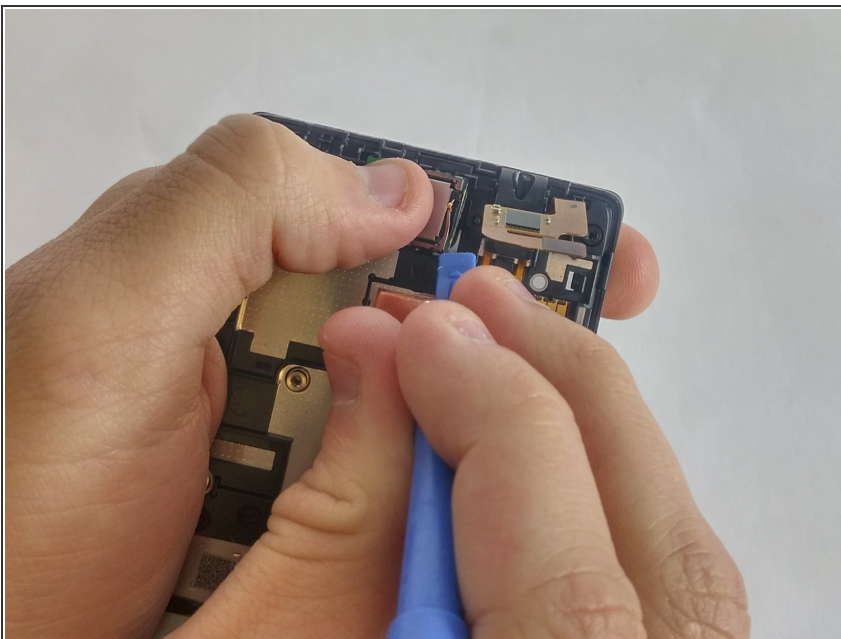
- Unclip the motherboard from the black case clasps using a plastic opening tool.

Step 7



- Unclip the motherboard clasps using your fingers or a plastic opening tool.

Step 8 — Ear Speaker



- Carefully lift the tabs on the side of the ear speaker with the plastic opening tool
- The speaker is securely attached to the device so some force is necessary to remove the speaker. Be careful not to use too much force as you do not want to cause any damage to the phone.

To reassemble your device, follow these instructions in reverse order.