



Nokia Lumia 635 Display Assembly Replacement

Nokia Lumia 635 Display Assembly Replacement

Written By: ZFix



INTRODUCTION

How to disassemble the device and change broken, smashed LCD display and Touch screen digitizer Glass.

[video: <https://www.youtube.com/watch?v=vXKT7wSj7Uc>]



TOOLS:

- [T4 Torx Screwdriver](#) (1)
- [Tweezers](#) (1)
- [Spudger](#) (1)
- [iFixit Opening Tools](#) (1)
- [Heat Gun](#) (1)
- [adhesive tape 3 mm](#) (1)



PARTS:

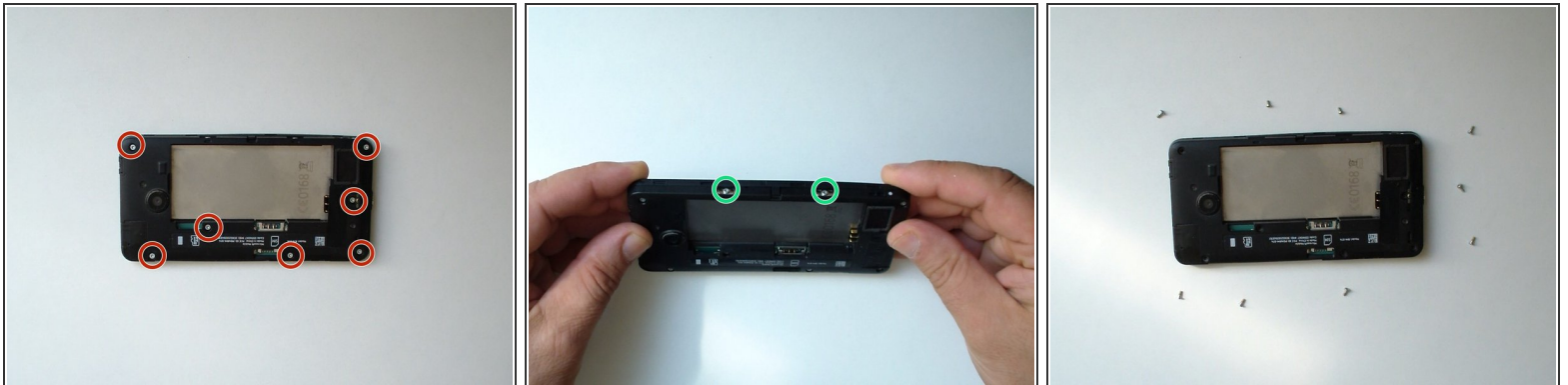
- [Lumia 535 Display Assembly](#) (1)

Step 1 — BATTERY, SIM AND MEMORY CARDS



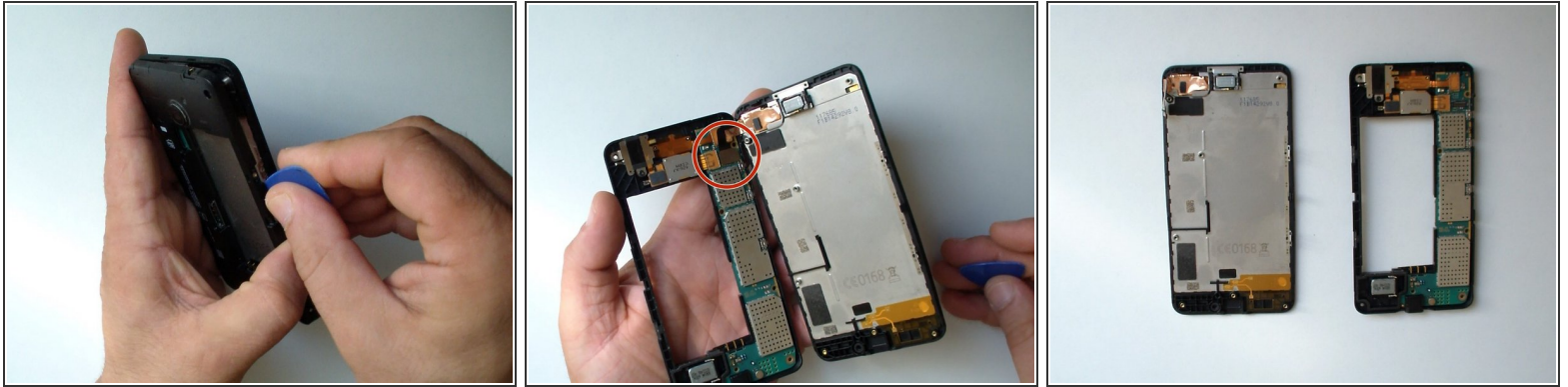
- Switch off the phone.
- Remove the battery and any installed SIM and memory cards.
- Remove the black tape near to the loudspeaker.

Step 2 — SCREWS



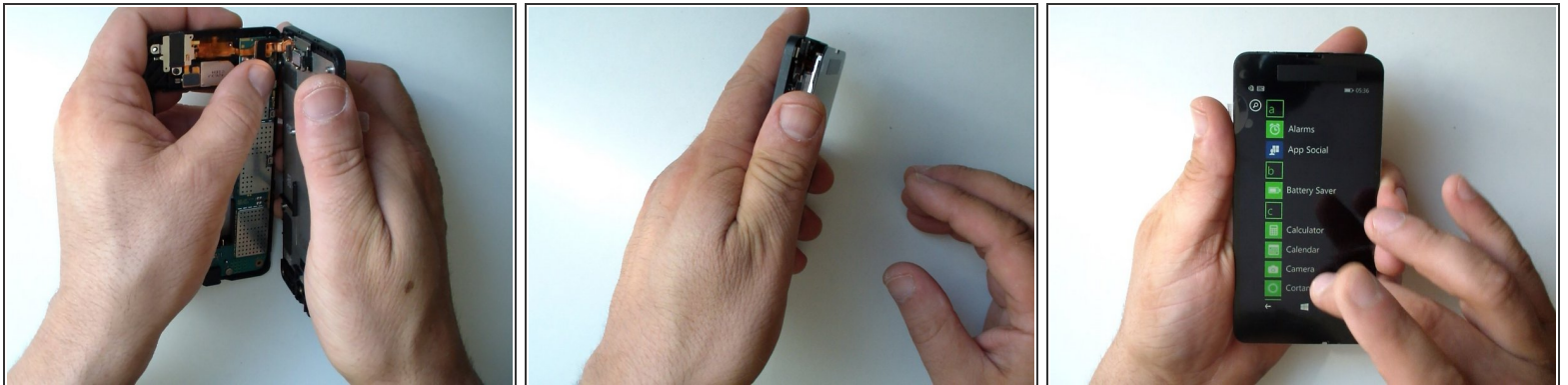
- Remove the 9x Torx T4 screws.
- ⓘ Two of them are with the same head size but with a different length.

Step 3 — REAR COVER / BEZEL



- Use a plastic opening tool to remove the back cover.
- Careful unhook the display assembly flex cable.

Step 4 — TESTING THE NEW SPARE PART



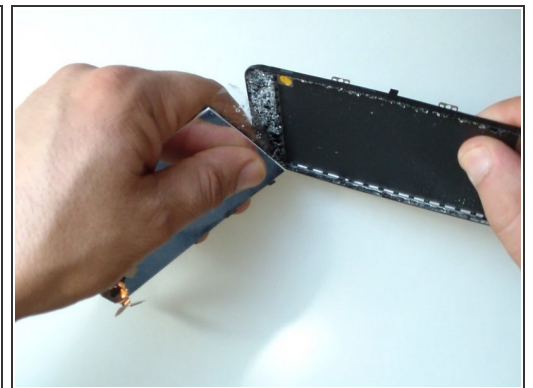
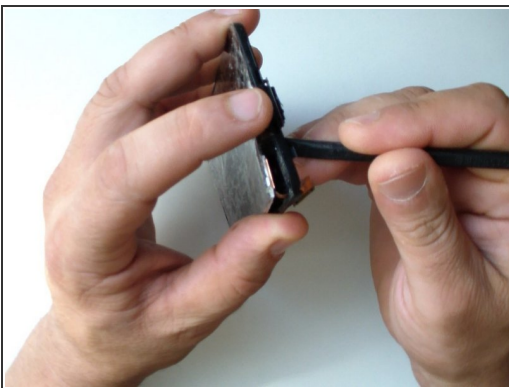
- Insert wisdom here.

Step 5 — DISPLAY ASSEMBLY STEP 1



- Put some scotch tape to prevent the glass from scattering.
- Use a hot gun or hair dryer and warm the glass to soften the adhesive.

Step 6 — DISPLAY ASSEMBLY STEP 2




- Start the separating from the upper right corner, where you have an hole in the middle frame.
- ⚠ Use plastic tool to prevent the middle frame from scratches.
- ⚠ Work slowly, you can cut your fingers.


Step 7 — MIDDLE FRAME



- Clean the middle frame.

- Put adhesive tape 3MM.

 Be careful, don't cover the technological openings on the middle frame (for the light sensor, earpiece, etc.).

 It's easier if you order the spare part together with an adhesive tape.

- Install the display assembly.

Step 8



- That's all.
- .
- .
- .
- .
- .
- .
- **Did you do it successfully?**

To reassemble your device, follow these instructions in reverse order.