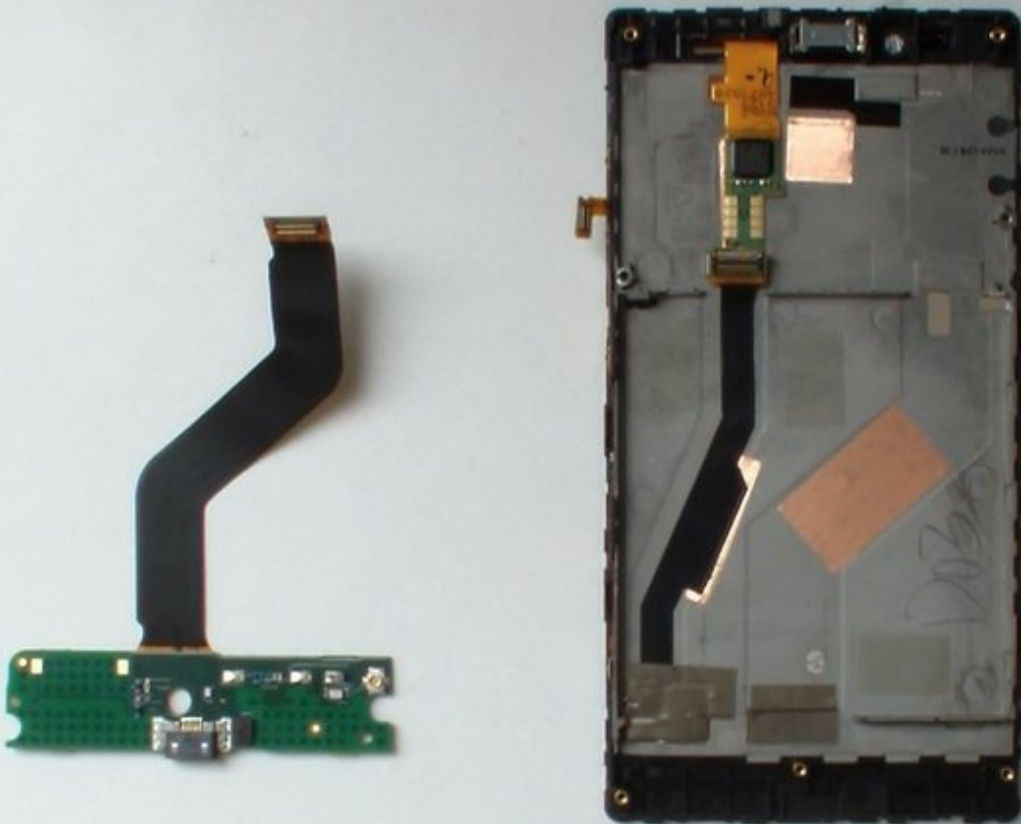




Nokia Lumia 720 Charging Dock / Micro USB and Microphone Module Replacement

Nokia Lumia 720 Charging Dock / Micro USB Connector and Microphone Module Replacement

Written By: ZFix



INTRODUCTION

Nokia Lumia 720 - How to disassemble the device and change the Charging Dock and Microphone Module.

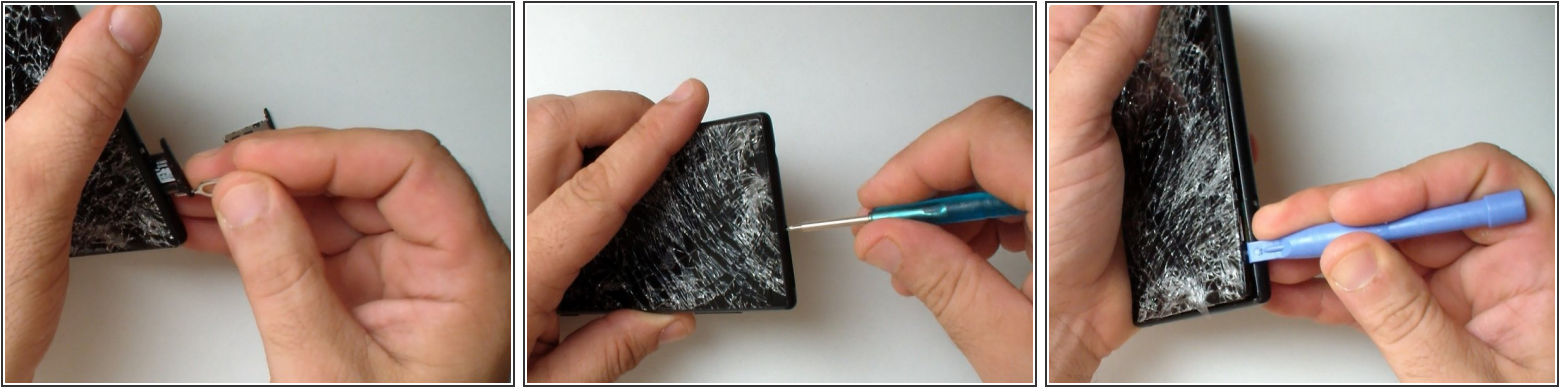
[video: https://www.youtube.com/watch?v=wseNxvPm_po]



TOOLS:

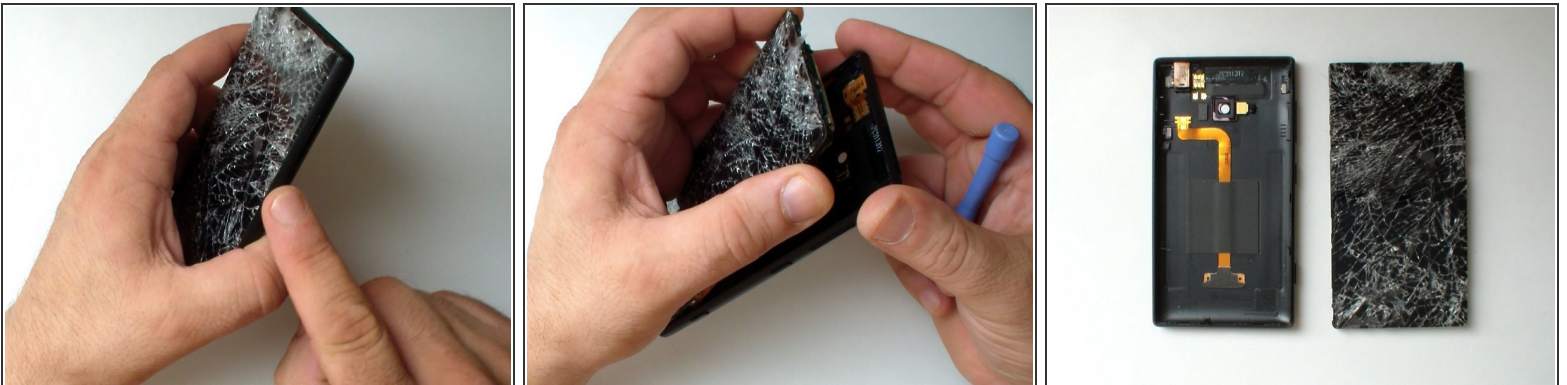
- [Tweezers](#) (1)
- [iFixit Opening Tools](#) (1)
- [Spudger](#) (1)
- [T2 Torx Screwdriver](#) (1)
- [T4 Torx Screwdriver](#) (1)
- [Heat Gun](#) (1)

Step 1 — BATTERY COVER - PART 1



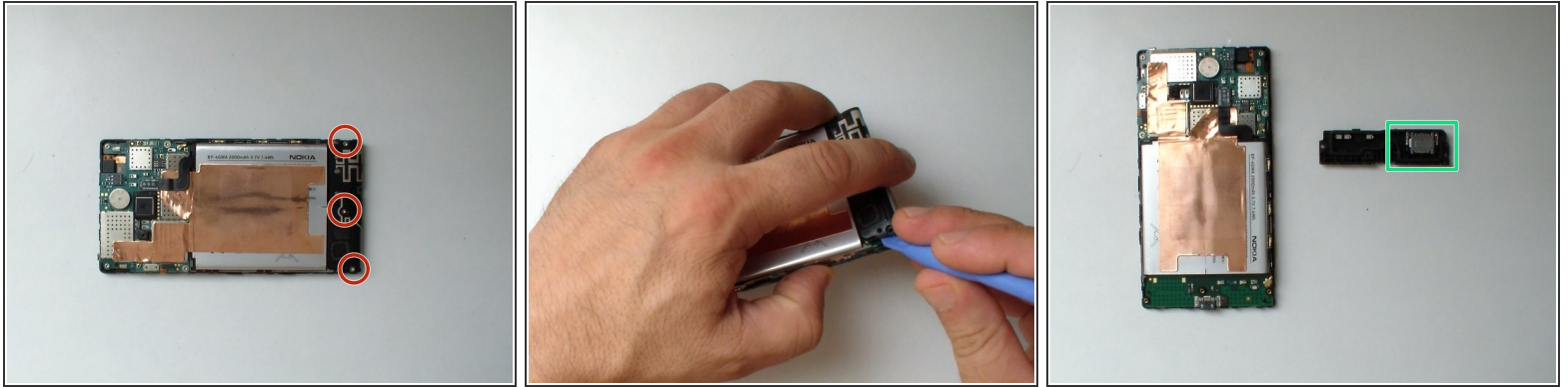
- Remove the SIM card tray and the memory card try.
- Use a screwdriver Torx T2 and remove the screw under the SIM card tray.
- Use plastic tools and start the separating the back cover from the top side.

Step 2 — BATTERY COVER - PART 2



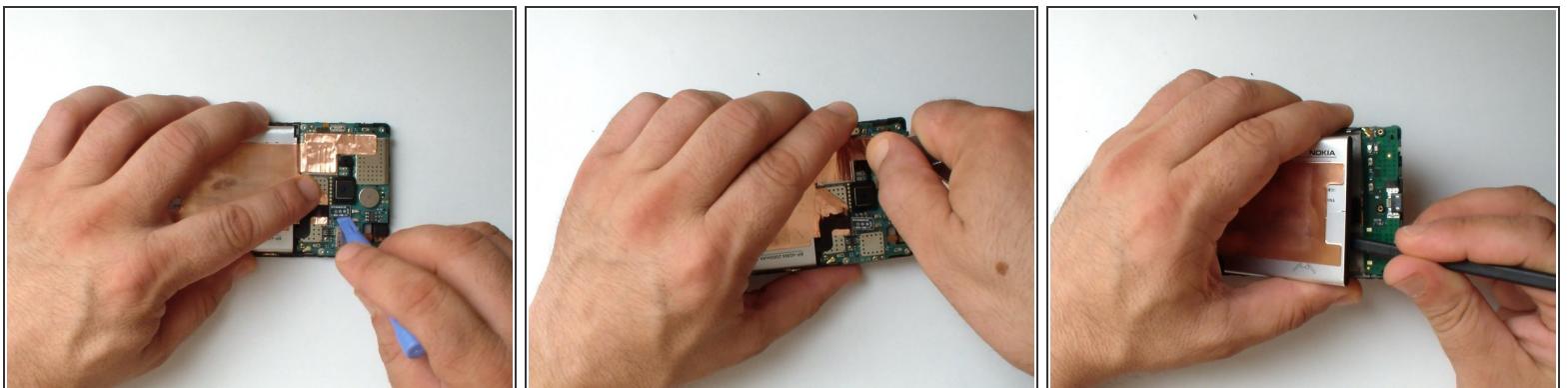
Be careful with the volume buttons.

Step 3 — Loudspeaker & Antenna module



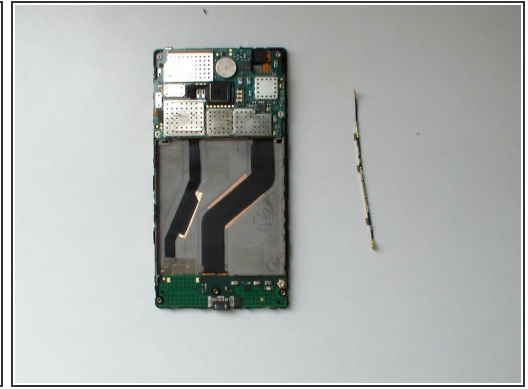
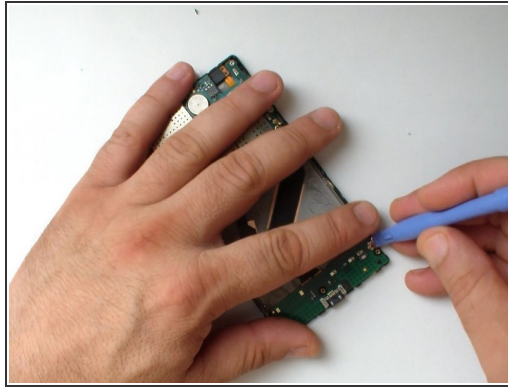
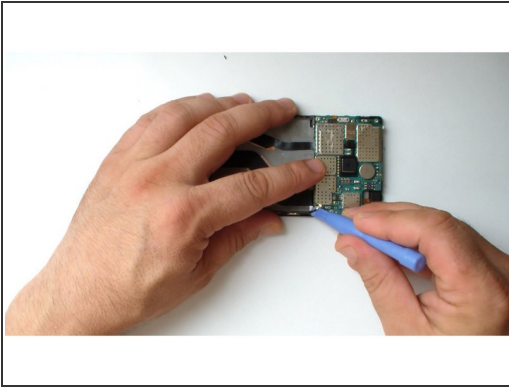
- Remove the 3x Torx T4 screws.
- Buzzer / Loudspeaker

Step 4 — BATTERY



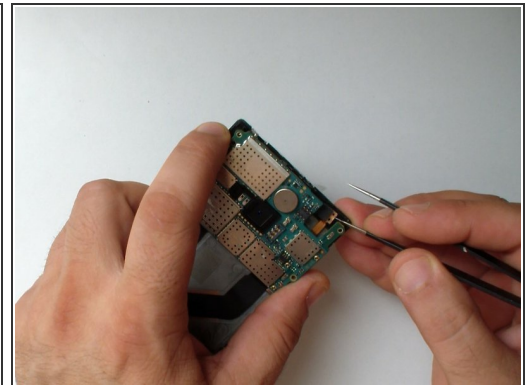
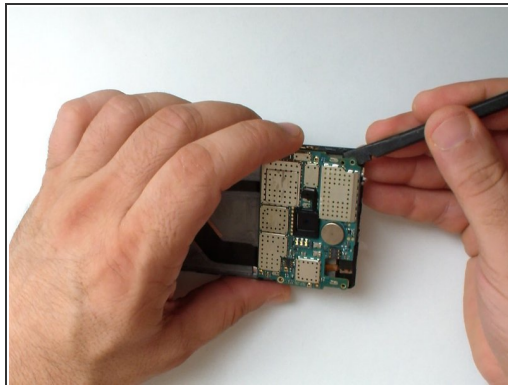
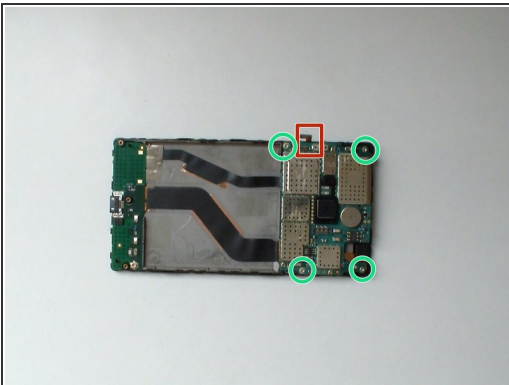
- Disconnect the battery flex cable.
- Unstick the metal foil from the logic board.
- Use a plastic tool with a thin tip and unstuck the battery from the middle frame.
- Battery - **BP-4GWA**, 2000mAh, 3.7V, 7.4Vh

Step 5 — COAXIAL ANTENNA CABLE



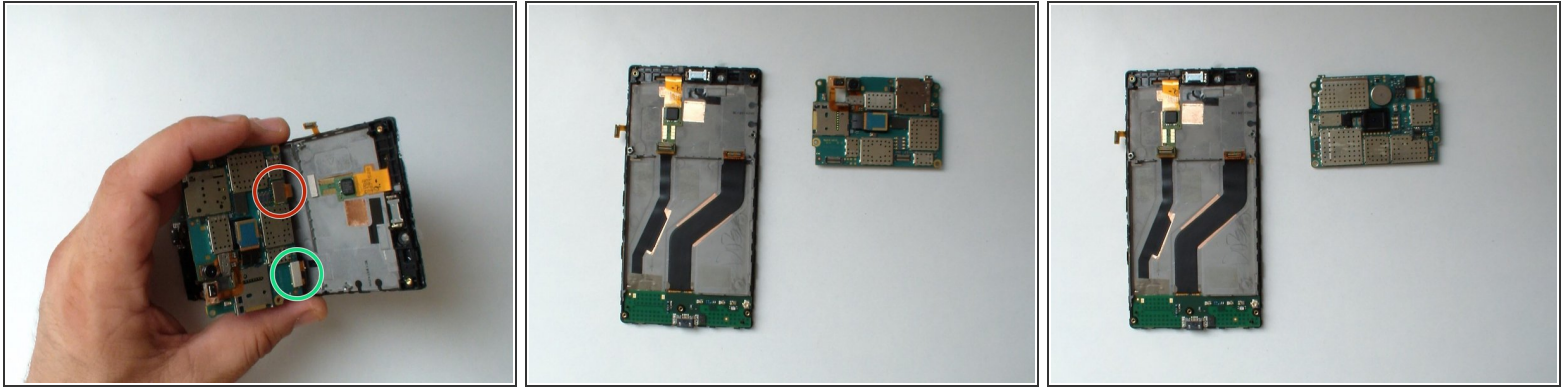
- Disconnect the Antenna cable from the Logic board and from the Charging Dock board and remove it.

Step 6 — Logic Board



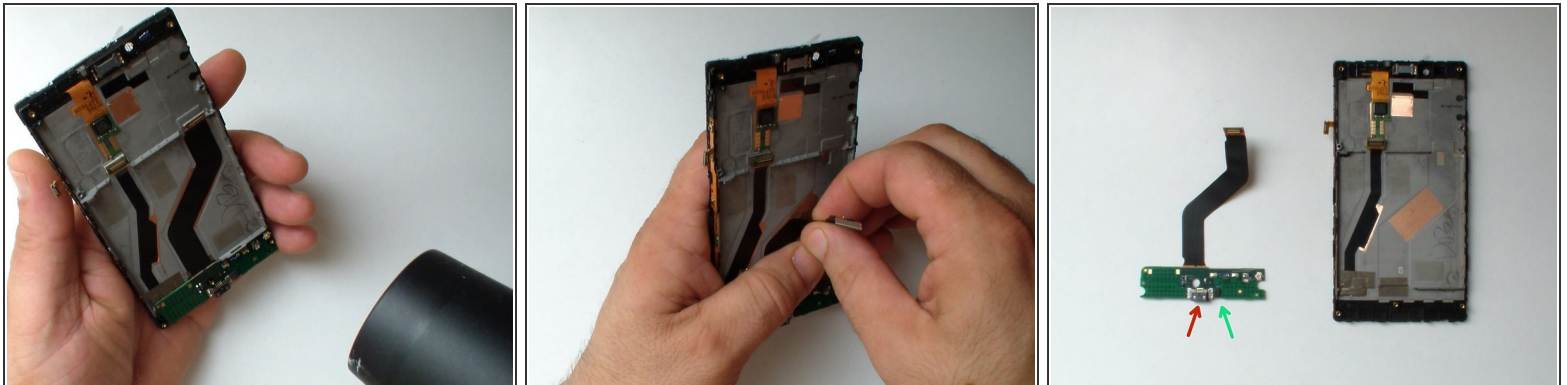
- Disconnect the Volume, Power and camera buttons flex cable.
 - Remove the 4x Torx T4 screws.
 - Slightly lift the board
- ⚠ Slowly and gently unstuck the light sensor from the middle frame.

Step 7



- Disconnect the Display Assembly flex cable.
- Disconnect the Charging Dock Board flex cable.
- Remove the Main board.

Step 8 — Charging Dock and Microphone Module



- Use a hair dryer and warm the flex cable.
- Careful unstuck the flex cable from the middle frame.
- Micro USB connector
- Microphone

To reassemble your device, follow these instructions in reverse order.